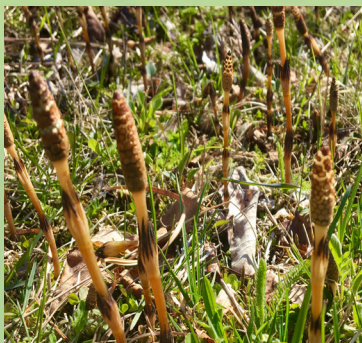


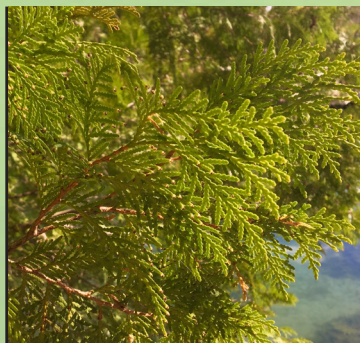


Guide to Spring Finds at Oden State Fish Hatchery



Horsetail

Primitive perennial. Fertile shoots emerge, producing spores that are replaced with sterile, sectioned stems.



White cedar

A coniferous tree that has fan-like branches and overlapping needles. Favorite winter food for deer.



Yellow-rumped warbler

Typically forage for insects on the outer tree canopies at middle heights.



Wood duck

Found in shallow water, swimming near edges. Colorful males and well-camouflaged females nest in tree cavities.



White sucker

Grey or tan with about five dark saddles on its back. Females migrate to spawning sites in spring before males.



Water striders

True bugs, adapted for life on top of the water. They use surface tension to their advantage and feed by snatching prey off the water's surface.



Mourning cloak

One of the first butterflies seen in the spring. Overwintering adults feed on tree sap.



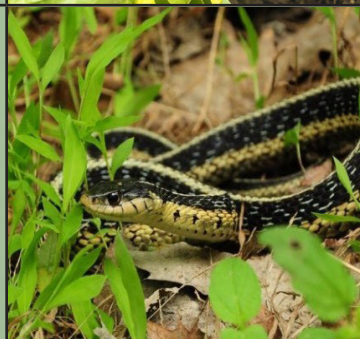
Marsh marigold

A perennial herb in the buttercup family. Enjoys growing in wet areas.



Riffles

Shallow areas found in streams and rivers where water moves swiftly over rocks and gravel.



Eastern garter snake

Three light stripes on a dark background, with a checkerboard pattern. Seen basking in the sun, or cooling in the shade to regulate temperature.