

Hulbert-Sage River Deer Wintering Complex (DWC) Management Plan

Upper Peninsula of Michigan Habitat Workgroup - Executive Summary

May 2016

In the northern portions of the Upper Peninsula (UP) of Michigan, deer encounter deep snow which limits access to food. Deer have adapted to deep snow conditions by migrating to find suitable food and shelter to survive the winter. These migratory destinations are called deer wintering complexes (DWC's) and are sometimes referred to as "deeryards."

Severe winters in 2012-13 and 2013-14 raised concern regarding the condition of these DWC's and the Upper Peninsula (UP) Habitat Workgroup was reformed with the mission of improving and conserving UP winter deer habitat. This document is a result of that effort and is intended to provide information and strategies for managing lands to benefit deer wintering within the Hulbert-Sage River DWC.

Plan Content - This plan contains 6 major sections plus a reference section.

Section 1 - Components of Deer Wintering Complexes

This section provides an overview of the description of and importance of food and shelter for deer in DWC's.

Section 2 - Goals and Objectives for Managing Deer Wintering Complexes

This section provides description of the workgroup's overall goals and objectives for DWC's.

Section 3 - The Hulbert-Sage River Deer Wintering Complex

This section highlights the current conditions of the Hulbert-Sage River DWC including information about the ownership patterns plus the key major habitat types and composition.

Section 4 - Summary of Management Objectives and Recommendations for the Hulbert-Sage River DWC

This section applies the overall goals and objectives from section 1 to the habitats identified in section 3. The recommendation summary is located on page 12.

Section 5 - Strategies for Managing the Key Hulbert-Sage River Habitats

This section describes each of the key habitats identified for the DWC and makes specific management recommendations for each habitat.

Section 6 - Summary

This section includes a list of the workgroups actions to achieve the goals and objectives for this DWC and provides the local DNR wildlife biologist # (906) 293-5024 and the county conservation district forester # (906) 632-9611 x 109 for more information

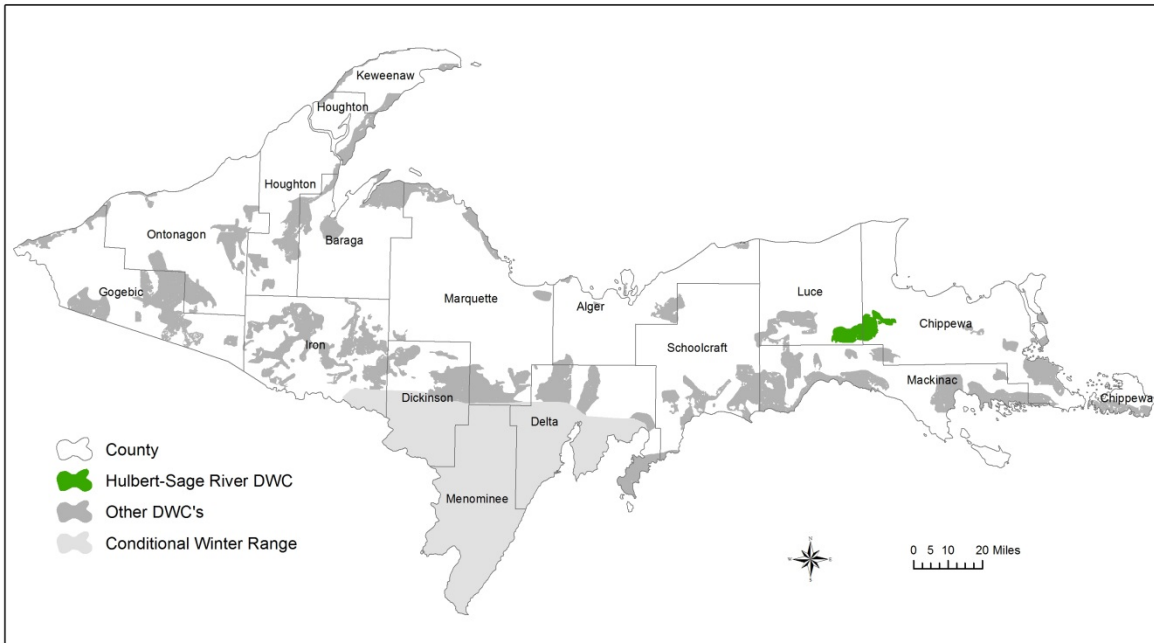
References

The references provide a list of programs and grants that can assist a landowner in implementing recommendations identified in this plan.

Hulbert-Sage River Deer Wintering Complex (DWC) Management Plan

Upper Peninsula of Michigan Habitat Workgroup

May 2016



Hulbert-Sage River Management Plan Table of Contents

<u>Section 1 - Components of Deer Wintering Complexes (Food and shelter)</u>	3-4
<u>Section 2 - Goals and Objectives for Managing Deer Wintering Complexes</u>	4
<u>Section 3 - The Hulbert-Sage River Deer Wintering Complex</u>	5-10
Figure 1 – Overview Map of the Hulbert-Sage River DWC	5
Figure 2 – Summer Range Map of the Hulbert-Sage River DWC	6
Figure 3 – Ownership Map of the Hulbert-Sage River DWC	7
Food and Shelter Conditions in the Hulbert-Sage River DWC	8
Figure 4 – Map of the Key Habitat Types	9
Figure 5– Map of the Hemlock Shelter Areas	10
Figure 6 – Map of the Cedar Shelter Areas	11
<u>Section 4 - Summary of Management Objectives and Recommendations for the Hulbert-Sage River DWC</u>	
Management Recommendation Summary	12
Figure 7– Shelterwood with Reserves	13
Figure 8 – Shelterwood with Reserves Post Harvest Cedar Stand	13
<u>Section 5 - Strategies for Managing the Key Hulbert-Sage River DWC Habitats</u>	
Hemlock	14
Cedar	15
Lowland Conifer	16
Spruce/Fir	17
Northern Hardwood	18
Aspen	19
Red Maple	20
Forest Openings	21
Spruce Budworm Considerations	22
<u>Section 6 - Summary</u>	23
<u>References (Key document and webpage links)</u>	24

Components of a Deer Wintering Complex:

In most of Upper Michigan, deer begin migrating to wintering complexes when snow accumulates between 12-18 inches, typically in mid-late December. Deer remain on their winter ranges until snow melts in spring and their mobility is restored. This confinement period on winter range can vary from 60 days to well over 100 days during an especially long winter. Significant winter-related deer deaths plus reduced physical condition and high newborn fawn mortality occur with durations of 90-100 days with greater than 12 inches of snow covering the ground. The UP winters of 1996 and 2014 had winter durations greater than 100 days and are remembered as especially severe for deer. To survive these long confinement periods on winter range, deer seek locations that provide both shelter and food suitably interspersed across the landscape.

Conifer stands with high canopy closure provide deer with shelter by reducing snow depths beneath the canopy and facilitating movement via extensive connected packed trails. Trail systems provide easier access to food and also assist deer in evading predators. These shelter stands also reduce wind chill and perhaps radiant heat loss. Shelter is defined by several categories:

- Functional Shelter: Conifer stands with at least 70% canopy closure and tree heights greater than 30 feet. These thresholds for canopy closure and height ensure the stand is effective at intercepting snow, resulting in decreased snow depths and increased mobility for deer to access food and avoid predators.
- Primary Shelter Species: Cedar and hemlock trees provide the best functional shelter as they intercept larger amounts of snow than other conifers. These species also are a favored winter food source which makes them difficult to regenerate and recruit back into the stand canopy. These species are long lived, however, and on some sites may survive 400 years or more. Most stands in the UP are 100-200 years old.
- Secondary Shelter Species: White spruce, balsam fir and white pine intercept less snow than cedar and hemlock but contribute to functional shelter especially when mixed with cedar and hemlock trees. These trees also provide feeding corridors through hardwood stands and shelter during periods of lower snow depth. Often these species occur as a component of mixed stands in the transitions between upland and lowland, such as in red maple stands.

Food is an integral habitat component for deer in winter. While adult deer can enter winter with sizeable fat reserves, fawns have not yet completed skeletal growth and therefore carry smaller percentages of fat. Thus, fawns must have dependable access to food to survive the winter. Some key sources of winter food are:

- Cedar and hemlock fronds where accessible.
- Litter fall – cedar and hemlock fronds, hardwood stems, and lichens dropped due to wind and snow action.
- Hardwood browse – most of the browse is available in aspen, red maple and northern hardwood stands, either as felled tops from winter timber harvest activity or as regenerating stems of trees and shrubs such as red-osier dogwood in years following timber harvests or natural disturbances such as windfall.

- Oak acorns –deer are able to access acorns early and late in the winter as snow depths allow.
- Spring herbaceous foods – forest openings inside and adjacent to DWC’s often provide protein-rich food for several weeks in spring and fall before deer enter or vacate the complexes.

Management of Deer Wintering Complexes:

The deer wintering complexes in the UP have been inventoried and mapped by the Department of Natural Resources (DNR) since 1927. Currently, there are around 50 named complexes in the UP. The extent of summer range used by deer in these complexes has been the subject of extensive deer tagging studies over the years. In 2014, the department implemented deer winter range guidelines for managing Michigan state forest lands, which represent about 20% of all DWC acreage in the UP. The UP Habitat Workgroup builds on these previous efforts by identifying goals, objectives and specific habitat management strategies for managing deer winter range across all land ownerships. Below are the goals and objectives defined by the workgroup.

Deer Winter Range Goal:

Sustainably manage shelter and food resources on deer winter range to reduce overwinter deer population fluctuations by:

- Maintaining or enhancing conifer shelter thereby facilitating deer movement to obtain food and avoid predation
- Providing high quality food adjacent to shelter

DWC objectives:

1. Move toward 50% of the complex in shelter species
 - Maintain primary shelter (cedar and hemlock)
 - Increase secondary shelter (white spruce, balsam fir and white pine) when below 50%
2. Move toward 50% of complex in sustainable food stands (primarily aspen and hardwoods) to enhance available browse

These objectives provide the initial direction for habitat management strategies in each DWC management plan to achieve stated goals. Each DWC, however, may have unique characteristics such as percent shelter and deer browse pressure that may result in different recommendations for achieving the goals. The first requirement for planning in the Hulbert-Sage River DWC is an analysis of the current characteristics.

The Hulbert-Sage River Deer Wintering Complex:

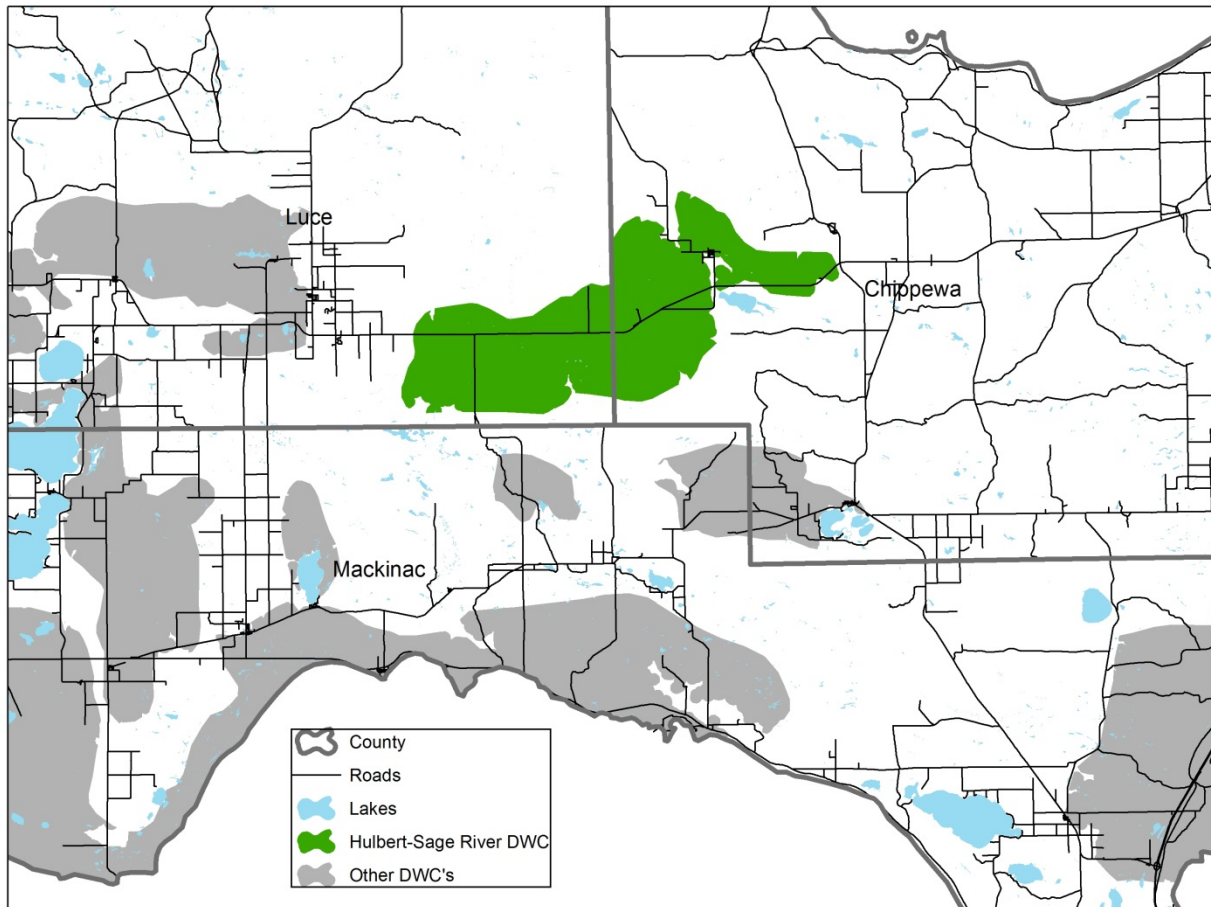


Figure 1 –DWC map with the Hulbert-Sage River Deer Wintering Complex in green.

The Hulbert-Sage River DWC is located east of the city of Newberry spanning areas of Luce and Chippewa Counties. The complex includes areas locally referred to as the Hulbert and Hendrie deeryards. This complex is approximately 51,700 acres (Figure 1) and deer use has been documented in parts of this complex by the DNR since 1928. The Hulbert-Sage River DWC is located in the moderate snow belt of the UP and averages 84 days of more than 12 inches of snow on the ground. The summer range extent of the deer using this complex was determined using observations of deer trapped and ear tagged in the winters of 1993-1997 by personnel from the Michigan DNR and the Tahquamenon Area Sportsman's Club. The observations of those deer indicate a summer range extent of approximately 489,000 acres (Figure 2) although given the limited number of trapping locations the actual summer range is likely substantially larger. The land ownership of the DWC is comprised of 63% Michigan State Forest, 7% Hiawatha National Forest, 6% Commercial Forest Act (CFA) lands with the balance (24%) comprised of private non-corporate landowners (Figure 3).

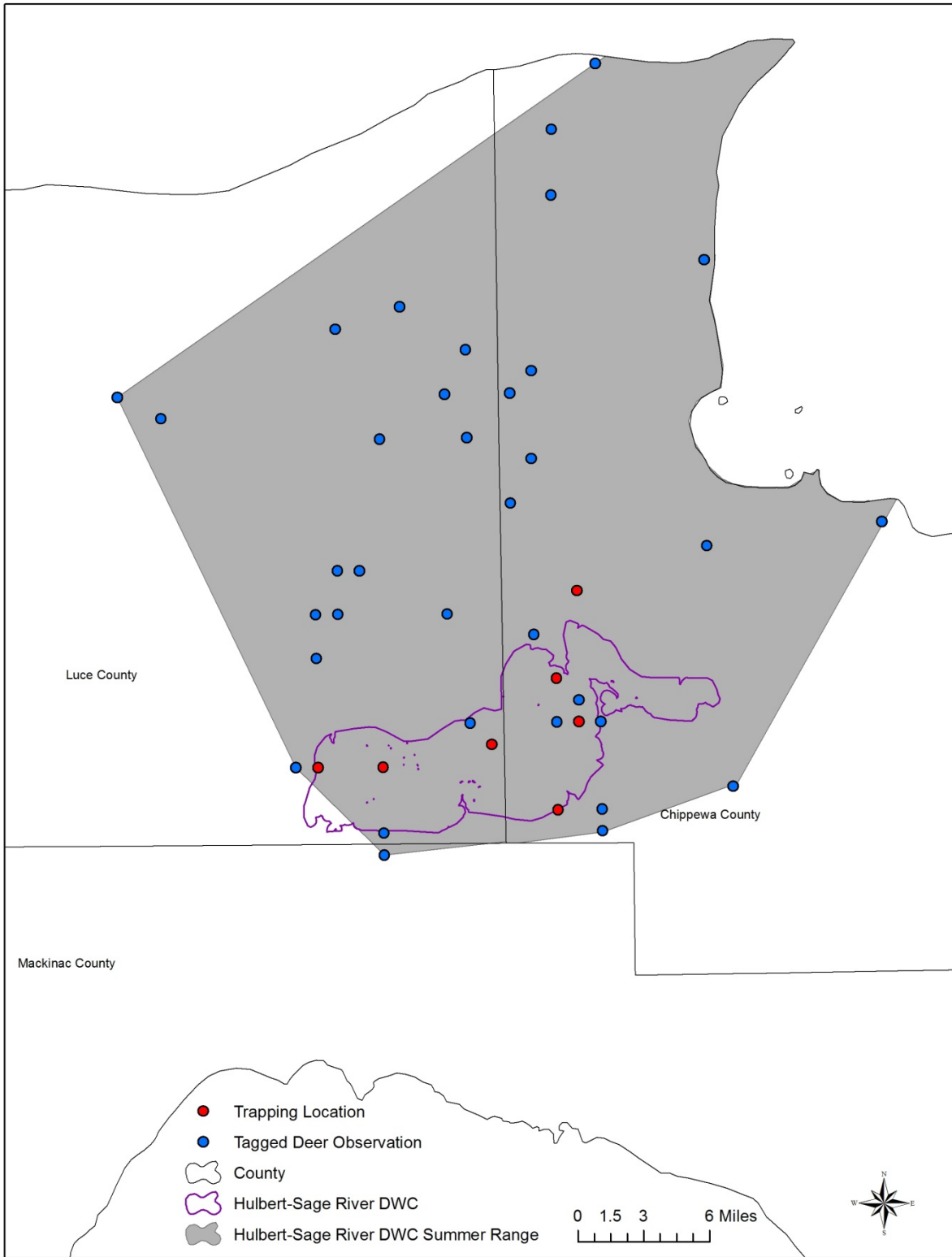


Figure 2 - Hulbert-Sage River DWC Deer Summer Range Distribution. Summer range is inclusive of spring-fall seasons

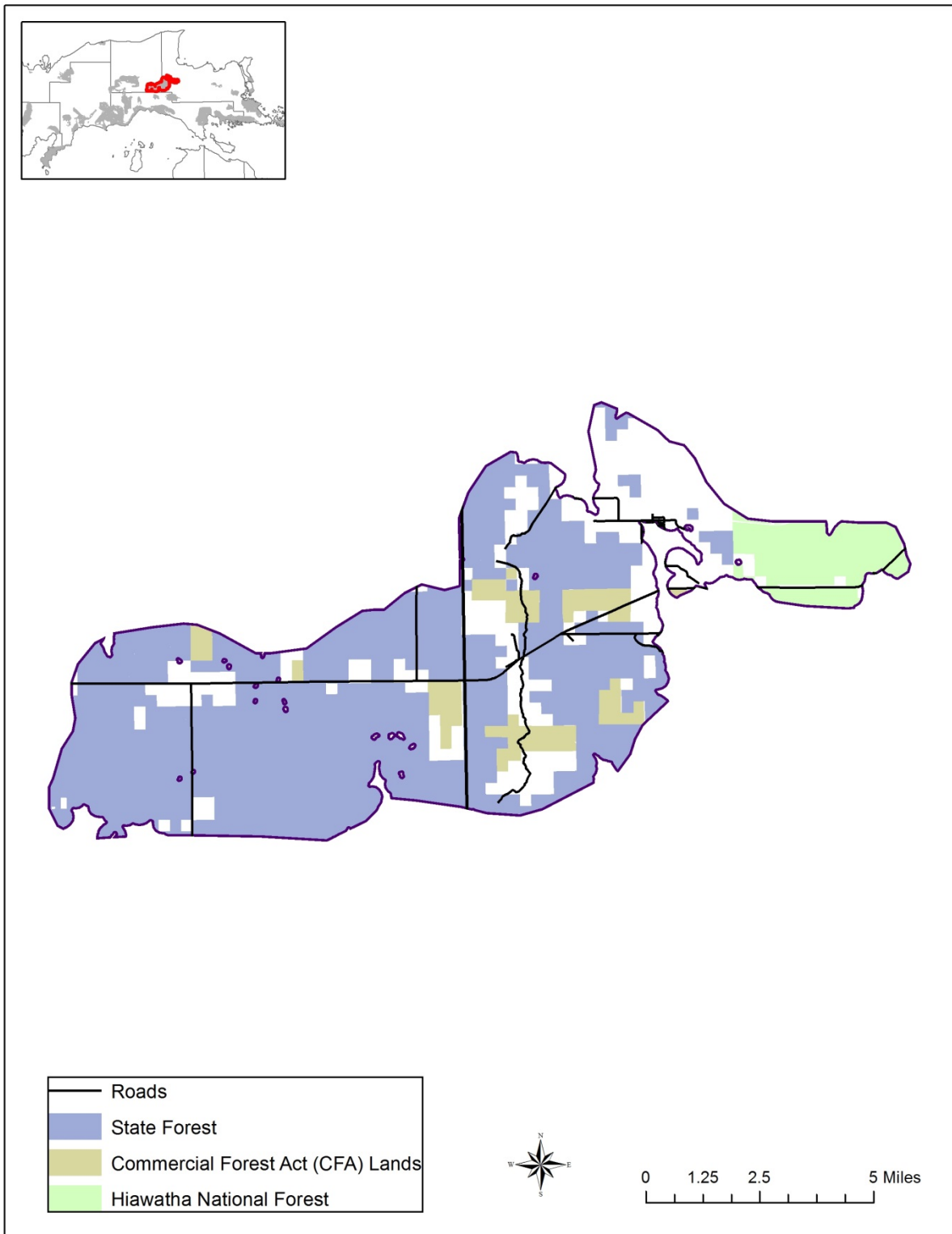


Figure 3 - Hulbert-Sage River DWC ownership map.

Current Food and shelter conditions in Hulbert-Sage River DWC:

The U.S. Forest Service (USFS) dominant vegetation layer was used to estimate the current food and shelter conditions of the Hulbert-Sage River DWC by key habitats and land covers which are important for wintering deer (Figure 4). These analyses have accuracy limitations and are not intended to provide exact habitat contribution percentages. They can be used however to portray the general condition of the food and shelter resources and the relative makeup of the land cover in order to highlight potential strengths and weaknesses in the habitats and also to identify opportunities for improvement.

Hulbert-Sage River DWC Land Cover Summary (% of the complex)

- Shelter 50%
 - hemlock 2%
 - cedar 42%
 - balsam fir, white spruce, white pine 6%
 - balsam fir provides the majority of the secondary shelter
- Food 31%
 - Aspen 6%
 - northern hardwood 8%
 - red maple transitional stands 16%
 - forest openings less than 1%
- Other Cover Types 19%
 - Tamarack, black spruce, wetlands

For cedar and hemlock, an additional analysis was conducted to determine the relative occurrence and abundance of these important primary shelter species. The output provides a prediction of locations that have higher amounts of cedar and hemlock and reasonably predicts broader functional primary shelter areas. See hemlock analysis map (Figure 5) and cedar (Figure 6).

Habitat summary: This complex is composed of 50% shelter species with hemlock and cedar making up 2% and 42% respectively. Secondary shelter species comprising primarily balsam fir with some white spruce and white pine comprise an additional 6% of shelter. Based on the hemlock and cedar analysis, cedar appears to be providing the majority areas of high density shelter (Figures 5 and 6). From a food standpoint, the red maple stands provide the majority of the food opportunities in this complex at 16% and has total food resources representing 31% of the DWC. Ideally, based on our DWC objectives, food and shelter resources should be arrayed at a 50/50 ratio to facilitate deer movement between food sources and functional shelter. While shelter represents 50% of this complex, if we calculate the shelter/food ratio without the “other cover types” then the ratio becomes 62% shelter and 38% food and indicates that the complex is short on food resources. An opportunity to increase food availability is in the 6% of the complex that is in secondary shelter. Most of this secondary shelter is comprised of balsam fir trees that could be actively harvested to increase hardwood regeneration. This hardwood regeneration following harvest can improve the food availability in this complex and assist in balancing the food/shelter resources.

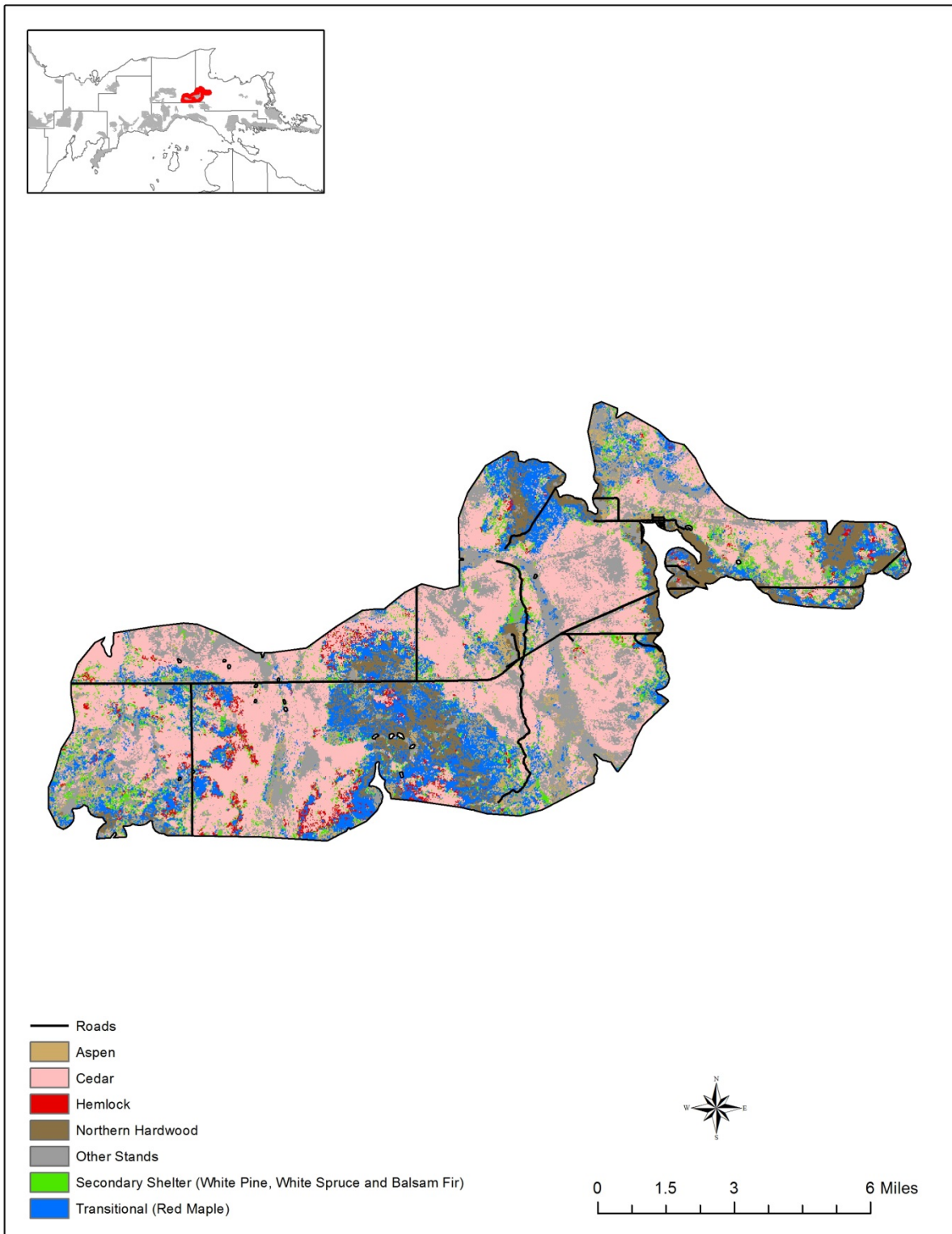


Figure 4 – The Hulbert-Sage River dominant forest cover

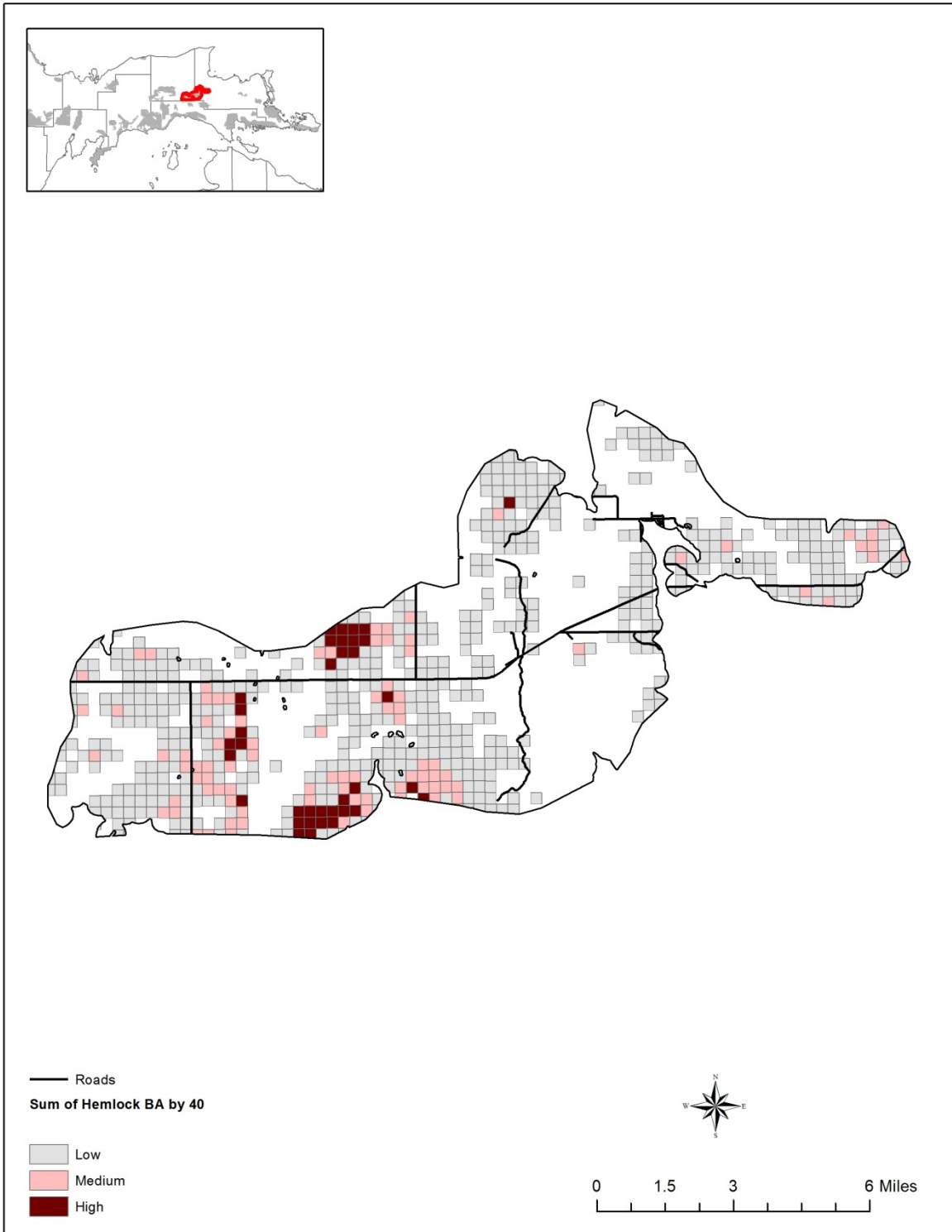


Figure 5 - Hulbert-Sage River DWC hemlock analysis depicting hemlock basal area by 40-acre parcels. The darker colored squares likely provide the best deer shelter potential. This analysis is based on data obtained from the USFS Forest Inventory Analysis.

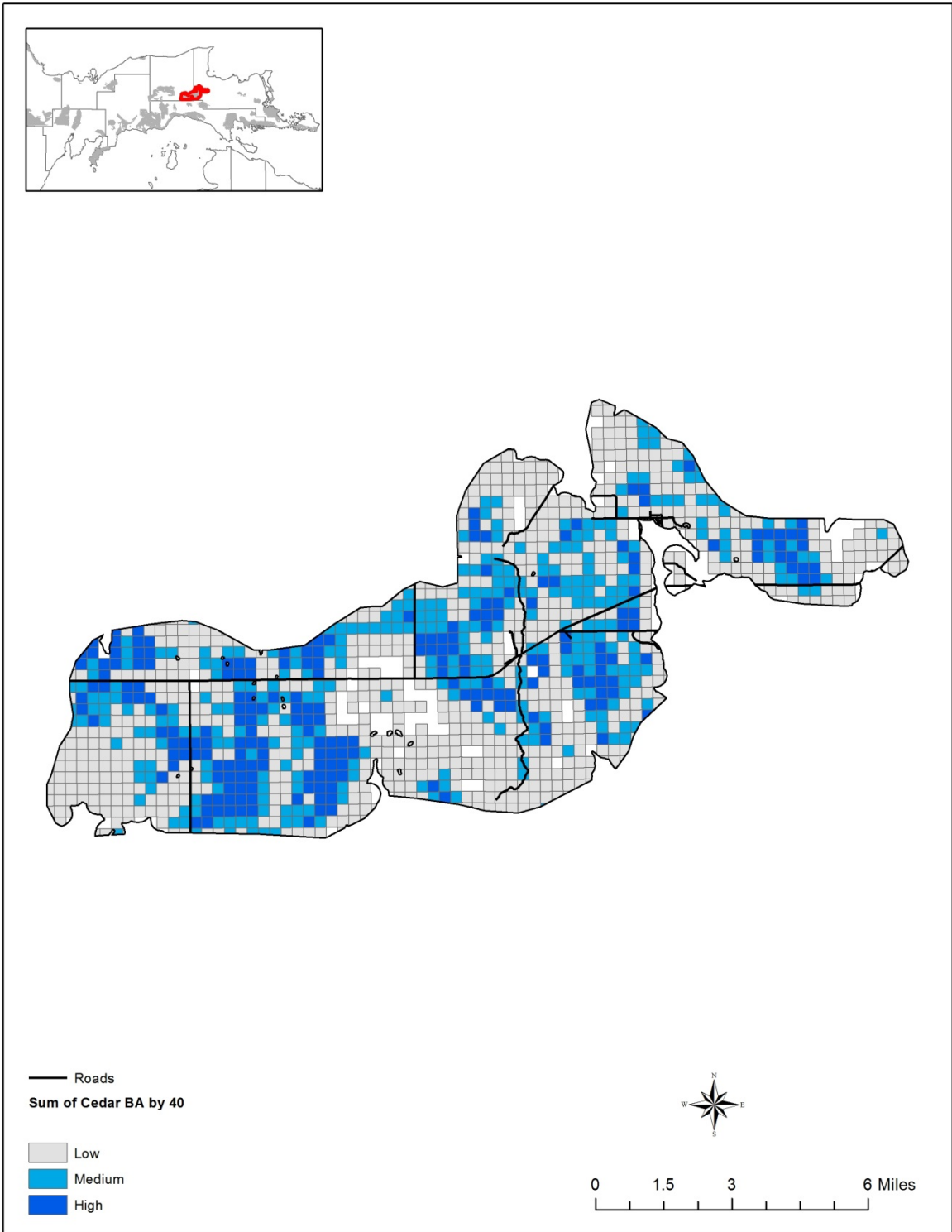


Figure 6 - Hulbert-Sage River DWC cedar analysis depicting cedar basal area by 40-acre parcels. The darker colored squares likely provide the best deer shelter potential. This analysis is based on data obtained from the USFS Forest Inventory Analysis.

Management Recommendations for the Hulbert-Sage River DWC:

Application of the DWC objectives to the Hulbert-Sage River DWC

- 1. Maintain primary shelter (cedar and hemlock)
 - Deer numbers in winter most likely preclude regeneration and recruitment of these species and deferring timber harvest is the preferred recommendation to maintain primary shelter.
 - If timber harvest is necessary, consider retaining these species or implementing shelterwood with reserves systems (Figure 7) that retains higher canopy closures of these species to preserve shelter value for wintering deer while allowing timber harvest. Use caution however as harvest of cedar and hemlock could permanently reduce winter shelter value.
 - Key habitat types – cedar, hemlock
- 2. Maintain secondary shelter (white spruce, balsam fir and white pine)
 - Use silvicultural methods to maintain the conifer component in stands exhibiting mixed conifer – hardwood conditions especially in areas adjacent to existing shelter.
 - Harvest mature white spruce/ balsam fir areas to salvage timber that is vulnerable to spruce budworm mortality while maintaining younger less vulnerable trees. This can also improve the food conditions in this DWC.
 - Key habitat types – northern hardwood, lowland conifer, aspen, red maple, spruce/fir
- 3. Enhance food resources
 - Harvest timber during winter and leave the felled tops for deer to consume
 - Harvest heavy balsam fir and white spruce areas to increase hardwood browse availability in future stand
 - Maintain oak in timber harvests to provide acorns during years of abundance
 - Consider oak tree plantings on suitable upland sites
 - Manage forest openings to provide spring forage
 - Key habitat types – northern hardwood, aspen, red maple, forest openings, spruce/fir, lowland conifer

Habitat Strategies Overview

Most of the forest land in the Hulbert-Sage River DWC is actively managed. Meeting the objectives for food and shelter requires the application of appropriate timber harvest methods for each of the key habitats. Recommended habitat management strategies were determined through reference to the silvicultural literature, examination of existing deer winter range management guidelines, and consultation with state, federal and private foresters and biologists.

Hemlock and cedar are the most critical deer habitat components due to their sheltering value. Deferring harvest of these species is the preferred management recommendation to ensure sustainability for providing shelter. If harvest of these species is necessary due to land owner objectives or due to requirements of applicable laws such as the Commercial Forest Act (CFA), a “shelterwood with reserves” harvest system is suggested as an alternative (Fig. 7 and 8) to maximize shelter retention for wintering deer.

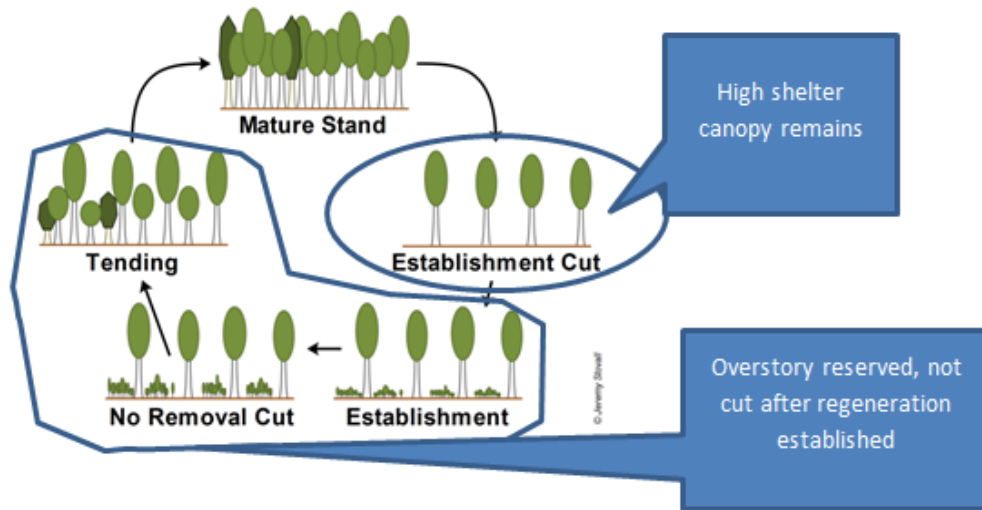


Figure 7– Shelterwood with Reserves Cycle



Figure 8 - Shelterwood with Reserves post harvest cedar stand

Habitat strategies by Key Habitat Type:

Hemlock (Hemlock and Northern Hardwood with Hemlock dominant)



Hemlock provides the best snow intercept. Hemlock stands, based on the USFS FIA data, represent only 2% of the landscape (Figure 4). Hemlock stands that provide functional shelter usually have basal areas greater than 100 sq. ft. /acre. These stand conditions reduce snow depths under the canopy and result in increased mobility for deer in the form of trails systems to access food and avoid predators. These stands also reduce the effects of wind and low temperatures and provide a surprisingly large amount of food from litterfall, including hemlock fronds, hardwood stems and lichen.

Hemlock strategies center on retention of this species in the stand as deer browsing makes it difficult to regenerate, and removing the trees can permanently eliminate the shelter value. These stands are relatively young and should be able to sustain periods of deferred harvest until regeneration and recruitment conditions improve. Beyond the deer benefits, retaining these trees has the added value of preserving seed trees for future reforestation and maintaining stand diversity to enhance biological diversity.

Recommended Strategy 1: Defer timber harvest in these stands. This is the simplest and preferred method to maintain the beneficial winter shelter value.

Alternative Strategy 2: Harvest other species but retain the hemlock and cedar if present. Maintain sufficient basal area in the residual stand to minimize windfall of remaining hemlock.

Alternative Strategy 3: Harvest using shelterwood with reserves leaving 70% canopy closure with retention heavy to hemlock (Figure 7). Without future regeneration and recruitment of hemlock this method may have limited repeatability.

Cedar (Lowland conifer with cedar dominant)



While not as efficient as hemlock, cedar also intercepts snow and also is a preferred winter food for deer. Cedar represents 42% of the DWC (Figure 4) and the basal area analysis in Figure 6 predicts much of the cedar is likely providing functional shelter. Cedar stands that provide functional shelter usually have a cedar basal area greater than 150 sq. ft/acre. These stand conditions function to reduce snow depths under the canopy and result in increased mobility in the form of trail systems to access food and avoid predators. These stands also reduce the effects of wind and low temperatures and provide a surprising amount of food from litterfall, including cedar fronds, hardwood stems and lichen.

Cedar strategies center on retention of this species in the stand as deer browse make it difficult to regenerate and removing the trees can permanently eliminate the shelter value. Cedar stands are relatively young at 100-200 years and should be able to sustain several periods of deferred harvest until regeneration and recruitment conditions improve. Beyond deer benefits, retaining these trees has the added value of preserving seed trees for future regeneration efforts and maintaining stand diversity.

Recommended Strategy 1: Defer timber harvest in these stands. This is the simplest and preferred method to maintain the beneficial winter shelter value.

Alternative Strategy 2: Harvest using shelterwood with reserves leaving 50% canopy closure with retention heavy to cedar and hemlock if present (Figure 7). Without regeneration and recruitment of cedar this method may have limited repeatability and could also permanently reduce shelter capability.

Alternative Strategy 3: Harvest other species but retain the cedar. Other conifer species such as hemlock, white pine, balsam fir and white spruce may be contributing to functional shelter and their removal may significantly reduce the shelter value depending on the arrangement and extent of the cedar retention.

Lowland conifer – (cedar minority but not majority black spruce, tamarack)



Lowland conifer stands used by deer that are not a majority of cedar are typically comprised of combinations of white spruce, black spruce, balsam fir, cedar, hemlock and deciduous trees including aspen, balsam poplar and red maple. Mature, heavy cedar/hemlock stocked patches within the mixed species stand often provide patches of functional shelter. Even sub-functional stands (tree heights < 30 ft and canopy closure < 70%) can provide valuable travel corridors between functional shelter and food stands. Similar to hemlock and cedar stands, they provide food in the form of litterfall including hemlock and cedar fronds, hardwood stems and lichens. In addition, the scattered canopy gaps can provide valuable browse such as red maple and red osier dogwood. These stands often have a high percentage of mature balsam fir that is vulnerable to spruce budworm outbreaks (See Spruce Budworm Considerations, page 22). Active timber harvest of these stands can provide an opportunity to salvage vulnerable trees before it is damaged by spruce budworm while maintaining younger less vulnerable conifer trees to restock the stand. Additionally, harvest of these stands provides an opportunity to increase hardwood browse opportunities especially in areas adjacent to primary shelter areas.

Recommended Strategy 1: Harvest using shelterwood with reserves leaving up to 50% canopy closure depending on site conditions especially the amount of existing cedar and hemlock present (Figure 7).

- Harvest in winter leaving felled tops to provide easily accessible winter food.
- Focus retention to cedar and hemlock trees and patches.
- Leave higher canopy closures (50%) in areas with abundant cedar and/or hemlock.
- Focus harvest on white spruce, balsam fir, aspen and red maple.
- See the spruce budworm section for more management considerations especially during periods of outbreaks on page 22.

Spruce/Fir – (white spruce and/or balsam fir dominant)



Spruce/fir stands are typically comprised of white spruce and balsam fir dominant stands often in combination with black spruce, white pine, cedar, hemlock and deciduous trees including aspen, birch, balsam poplar and red maple. Spruce/fir stands can occur in both lowland and upland sites. These stands often provide patches of functional winter shelter in mature stands especially when mixed with cedar and hemlock trees. Even sub-functional stands (tree heights < 30 ft and canopy closure < 70%) can provide valuable travel corridors between functional shelter and food stands. Similar to lowland conifer stands, they provide food in the form of litterfall including hemlock and cedar fronds, hardwood stems and lichens. In addition, scattered canopy gaps can provide valuable browse including red maple, aspen, birch and red osier dogwood. Spruce budworm outbreaks are a concern in these stands as older and denser stands provide the best winter deer shelter, they also are most susceptible during outbreaks. Spruce/fir stands can be managed as even age stands (using clearcuts) or uneven age stands (using partial cuts). Similar to lowland conifer stands, these stands are vulnerable to spruce budworm outbreaks (See Spruce Budworm Considerations, page 22) and timber harvest can provide an opportunity to increase hardwood browse opportunities. These opportunities can be accomplished through either even or uneven aged timber management depending on local conditions.

Recommended Strategy: Harvest using shelterwood with reserves leaving 25-50% canopy closure (Figure 7) or using clearcuts with retention.

- Harvest in winter leaving felled tops to provide easily accessible winter food.
- Target for harvest mature balsam fir, white spruce, aspen and other hardwood trees.
- Focus retention heavy to hemlock, cedar, black spruce and white pine to increase stand species diversity and provide travel/feeding corridors.
- Retain white spruce and balsam fir less the 2 inch diameter at breast height (DBH) and protect regeneration from damage during harvest.
- See the spruce budworm section for more management considerations especially during periods of outbreaks on page 22.

Northern Hardwood (Hemlock a minority)



Northern hardwood stands where hemlock is a minority component, serve primarily as a food source for wintering deer although patches in the stand heavier to conifers may provide shelter during mild winters. Sugar maple typically makes up a majority of these stands but can be mixed with white ash, basswood, red oak, black cherry and shelter species including hemlock, white spruce, balsam fir and white pine. Often these stands become more mixed with shelter species as the stand transitions from the upland to the lowland. The mixed portions become important travel corridors for foraging on regenerating hardwood stems and moving between functional shelter areas. The recommended strategies center on providing food for deer the year of harvest and in subsequent years from regenerating stems.

Recommended Strategies:

- Maintain a mixed conifer – hardwood stand condition where it exists.
- Harvest in winter using single tree or group selection leaving felled tops to provide easily accessible winter food.
- Consider small cut units (e.g. 20 acres) in order to spread the harvest over multiple winters
- Retain all cedar and hemlock trees to facilitate deer movement and feeding opportunities and provide diversity in stand.
- Retain oak trees to provide access to acorns during early and late winter as snow depths allow.
- Consider oak plantings on appropriate sites.

Aspen (pure aspen or mixed conifer component)



Aspen stands serve primarily as a food source for wintering deer although patches of conifers may provide shelter. Big tooth aspen, quaking aspen and birch typically makes up a majority of these stands but they can be mixed with shelter species including hemlock, cedar, white spruce, balsam fir and white pine. Often, these stands become more mixed with shelter species as the stand transitions from the upland to the lowland. These heavily mixed stands become important travel corridors for deer to forage on regenerating hardwood stems and to move between shelter areas. The recommended strategies center on providing food for deer in the year of timber harvest and in subsequent years from regenerating stems.

Recommended Strategies:

- Maintain a mixed conifer – aspen stand condition where it exists.
- Retain all conifer less the 4 inch diameter at breast height (DBH)
- Harvest in winter leaving felled tops to provide accessible winter food.
- Consider small cut units (e.g. 20 acres) in order to spread the harvest over multiple winters.
- Avoid cutting near areas recently planted with white pine or hemlock until those plantings have grown out of the reach of deer browsing.
- Retain cedar and hemlock trees to facilitate deer movement and feeding opportunities and provide diversity in the stand.
- Retain oak trees to provide access to acorns during early and late winter as snow depths allow.
- Consider oak plantings on appropriate sites.

Red Maple (transitional stands between uplands and lowlands)



Red maple stands tend to occupy the transitions between upland and lowland and serve as a food source for wintering deer. Red maple typically makes up the majority of these stands but can be mixed with white ash, basswood, black cherry and shelter species including hemlock, white spruce, balsam fir and white pine. Often these stands become more mixed with shelter species as the stand transitions from the upland to the lowland. These areas become important travel corridors for deer and serve to disperse deer thereby reducing browse pressure. The recommended strategies center on providing food for deer the year of harvest and in subsequent years from regenerating stems.

Recommended Strategies:

- Maintain a mixed conifer – hardwood stand condition where it exists.
- Harvest in winter leaving tops to provide accessible winter food
- Retain cedar and hemlock trees to facilitate deer dispersal and provide diversity in stand.
- Retain oak trees to provide access to acorns during early and late winter as snow depths allow.
- Consider oak plantings on appropriate sites.

Forest Openings



Forest openings within and adjacent to deer wintering complexes may provide a key early spring food source. Deer leave complexes in the spring and move toward their summer ranges as soon as snow depths moderate. In the Hulbert-Sage River DWC, existing openings are limited and represent less than 1 percent of the complex. Examples of openings include utility corridors, timber harvest landings, old logging roads and remnant forest openings. Snow melts early on south facing slopes and these sites often provide the first available green vegetation for deer. These south facing slopes represent especially good locations for managing for forest openings. Strategies center on maintaining these openings in cool season plants species that provide early spring nutrition.

Recommended Strategies:

- Maintain existing openings by cutting, mowing or burning to control tree encroachment
- Emphasize cool season grasses and forbs.
- For maximum spring deer food benefit, consider maintaining forest openings in wildlife clover mixes with annual late summer mowing and regular 3-5 year maintenance and, if necessary, reseeding.
- Shrub plantings around the opening edges such as red-osier dogwood may provide additional browse opportunities

Spruce Budworm Considerations in Deer Winter Range

The spruce budworm is one of the most destructive native insects in the northern spruce and fir forests of Michigan. Periodic outbreaks of the spruce budworm are a part of the natural cycle of events associated with the maturing of balsam fir every 30-50 years. The last widespread outbreak of the insects in Michigan ended during the 1980s and experts think we may be seeing the beginning of a new epidemic that could persist over the next few years. While balsam fir and white spruce are the most damaged by the budworms, they also feed on black spruce, tamarack, pine and hemlock trees when they are in stands with balsam fir or white spruce. Tree mortality results not just in lost timber value but also can result in reductions of current and future deer winter shelter. As these outbreaks occur there is an interest on the landowner's part to salvage timber value while also preserving deer winter habitat. Below are some recommendations for managing forest lands that may be affected by spruce budworm while also considering deer winter habitat.

Goal: Maintain spruce/fir on the landscape as an important component of deer winter shelter

Facts of spruce budworm epidemics to consider:

- Stands with an extensive overstory (> 40% of stand) of white spruce and/or balsam fir that are older than 50 years are most vulnerable. These are typically spruce/fir stands but sometimes lowland conifer stands.
- Stands mixed with a component of balsam fir and white spruce < 40% are less vulnerable
- Younger white spruce and balsam fir in the understory are less vulnerable unless located underneath heavily stocked older infected trees in the overstory.
- Even without management in an infected stand, white spruce and balsam fir tend to regenerate due to the presence of seedlings and canopy gaps provided by the dead and dying overstory trees.

Management recommendations:

- Where there is an extensive overstory (>40% of stand) of mature spruce/fir and the overstory is showing signs of infection or has a high probability of infection.
 - Harvest the mature balsam fir and white spruce overstory while protecting the understory from further damage.
 - Retain hemlock, cedar, black spruce and white pine to increase diversity and decrease vulnerability in the future stand.
- Where spruce/fir is a component <40% of stand.
 - Leaving the stand unmanaged is the simplest option to maintain shelter. Even if the overstory spruce/fir dies the probability is the gaps underneath will regenerate to spruce/fir.
 - However, removing mature infected overstory balsam fir and white spruce trees may protect extensive existing understory regeneration in some cases.
 - Harvest of these stands can also improve future food conditions as it often encourages hardwood regeneration.

Summary:

The Hulbert-Sage River DWC is located in SE Luce and SW Chippewa Counties and the deer depending on this complex for winter survival inhabit large areas of eastern Luce and western Chippewa Counties during the spring-fall period based on tagged deer observations. Most of the land located inside this complex is actively managed forestland. To effectively manage the food and shelter resources for deer use during the winter, it requires application of timber harvest strategies to manage those key habitats. This document provides habitat recommendations including timber harvest guidance for each of these key habitats. This complex has been used by wintering deer since at least 1928 and application of these strategies should contribute to the overall winter range goal to “sustainably manage shelter and food resources” and result in the continued use of this complex by wintering deer into the future.

If you are a landowner within this complex and interested in implementing some of the strategies identified in this document, be sure to review the reference section on the next page. The references include resource links that can guide and potentially even help fund your forest management plans. A good starting point is contacting the local DNR wildlife biologist at (906) 293-5024 and/or your local county conservation district forester at (906) 632-9611 x 109. They can provide guidance identifying and implementing these strategies based on your interest in timber harvest, or non-timber harvest activities such as tree planting or forest opening creation or maintenance.

UP Habitat Workgroup Strategies to Achieve Habitat Objectives in the Hulbert-Sage River DWC

- Engage with the DNR to provide input on opportunity areas that fall within the Hulbert-Sage River DWC.
- Engage with the Hiawatha National Forest to provide input on opportunity areas that fall within the Hulbert-Sage River DWC.
- Contact forestry consultants in the area, share the habitat goals and summary of this complex and encourage them to consider these recommendations when working with landowners located in this complex.

References:

Deer Winter Range Information

[UP Habitat workgroup information and online maps](http://bit.ly/uphabitatworkgroup) <http://bit.ly/uphabitatworkgroup>

[Michigan State Forest Deer Winter Range Guidelines](https://www.michigan.gov/documents/dnr/DeerWinterRangeGuidelines_469021_7.pdf)

https://www.michigan.gov/documents/dnr/DeerWinterRangeGuidelines_469021_7.pdf

Forestry Links

[List of Conservation District Foresters by County](http://michigan.gov/MIFAP) <http://michigan.gov/MIFAP>

[Summary of forestry programs for landowners in Michigan](http://michigan.gov/documents/dnr/GeneralForestryInfo_474276_7.pdf)

http://michigan.gov/documents/dnr/GeneralForestryInfo_474276_7.pdf

[Forest Stewardship Program](http://michigan.gov/foreststewardship) – provides management plan assistance

<http://michigan.gov/foreststewardship>

[Natural Resource Conservation Service \(NRCS\)](http://www.nrcs.usda.gov/wps/portal/nrcs/main/mi/technical/landuse/forestry/) - provides management plan assistance

<http://www.nrcs.usda.gov/wps/portal/nrcs/main/mi/technical/landuse/forestry/>

Grant Programs – these programs are competitive and may help fund some of the recommendations identified in this document beyond timber harvest, including conifer tree planting and opening maintenance.

[Wildlife Habitat Grant Program](http://www.michigan.gov/dnr/0,4570,7-153-58225_67395-324696--,00.html) -The Wildlife Habitat Grant Program (WHGP) purpose is to provide funding to local, state, federal and tribal units of government, profit or non-profit groups, and individuals to assist the Wildlife Division with developing or improving wildlife habitat for game species.

http://www.michigan.gov/dnr/0,4570,7-153-58225_67395-324696--,00.html

[Upper Peninsula Deer Habitat Improvement Grant](http://www.michigan.gov/dnr/0,4570,7-153-58225_67395-271849--,00.html) - The Deer Habitat Improvement Partnership Initiative is a grant program designed to foster productive relationships between the DNR, sportsmen's organizations, concerned citizens and other partners that produce tangible deer habitat improvement benefits and educate the public about the importance of the work and the scientific principles involved in it.

http://www.michigan.gov/dnr/0,4570,7-153-58225_67395-271849--,00.html

[NRCS Environmental Quality Incentives Program \(EQIP\)](http://www.nrcs.usda.gov/wps/portal/nrcs/main/national/programs/financial/eqip/) - Provides financial and technical assistance to landowners through contracts that provide financial assistance to help plan and implement conservation practices that address natural resource concerns and for opportunities to improve soil, water, plant, animal, air and related resources on agricultural land and non-industrial private forestland.

<http://www.nrcs.usda.gov/wps/portal/nrcs/main/national/programs/financial/eqip/>

Tree sales –Most county conservation districts have spring tree sales including white pine, white spruce, hemlock and balsam fir.

[List of local districts](http://macd.org/local-districts.html) <http://macd.org/local-districts.html>