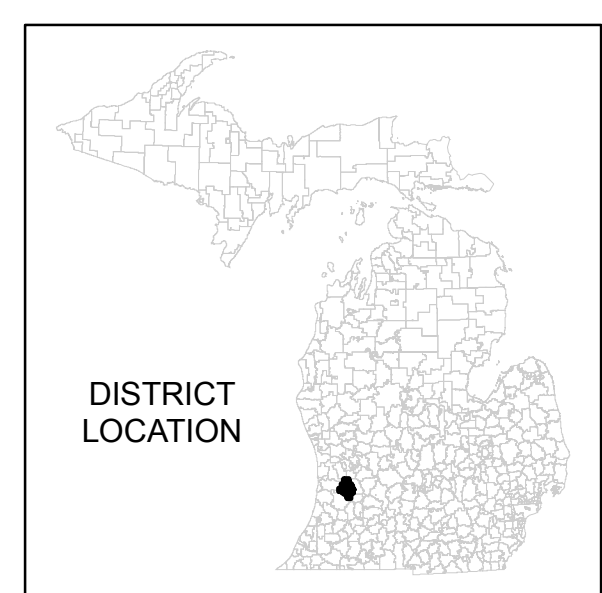
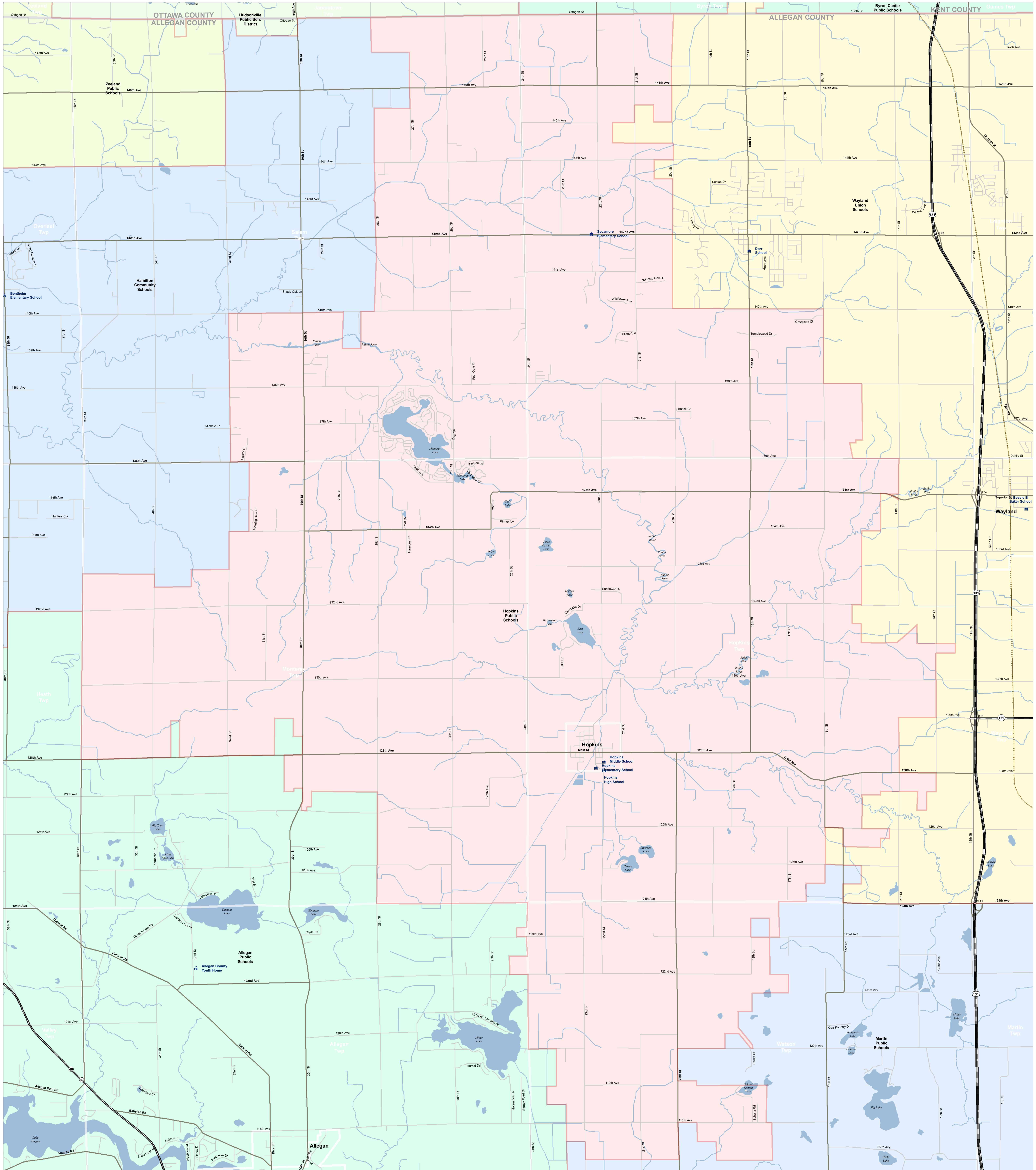


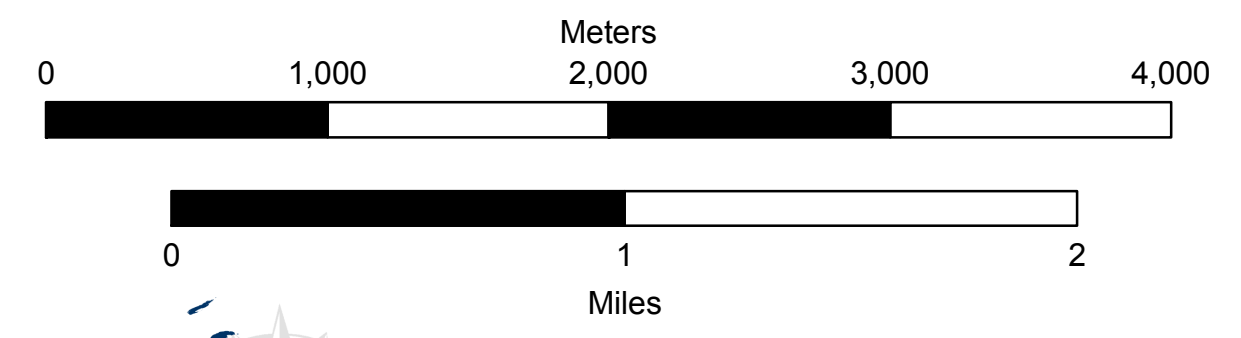
Hopkins Public Schools

Allegan ISD



Information provided is accurate to the best of our knowledge and is subject to change on a regular basis. Without notice, Michigan CIP takes every effort to provide valid and accurate information, we do not warrant the information to be authoritative, complete, correct or timely. Information is provided on an "as is" basis. Michigan CIP will not be held responsible for any liability, loss, injury or damage incurred as a consequence, directly or indirectly, resulting from the use and application of any of the contents of this map.

Please feel free to contact CIG with questions regarding the boundary mapping process. Information is subject to change without notice. Michigan CIP takes every effort to provide valid and accurate information, we do not warrant the information to be authoritative, complete, correct or timely. Information is provided on an "as is" basis. Michigan CIP will not be held responsible for any liability, loss, injury or damage incurred as a consequence, directly or indirectly, resulting from the use and application of any of the contents of this map.



Produced by: J. Shively
Michigan Center for Geographic Information
Department of Information Technology
Completion: March 2008

- SCHOOL
- SCHOOL DISTRICT BOUNDARY
- CITY / VILLAGE
- COUNTY BOUNDARY
- WATER FEATURE
- HIGHWAY
- MAJOR ROAD
- LOCAL ROAD
- RAILROAD

For more information:
Web: www.michigan.gov/cgi
Phone: 517.373.7910