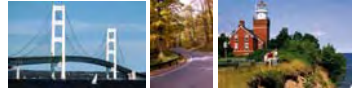
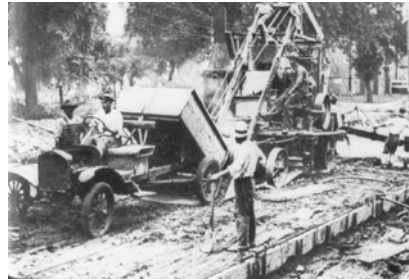


Session 12:

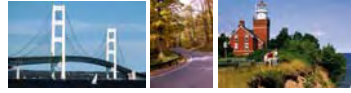
CONTEXT SENSITIVE SOLUTIONS IN TRANSPORTATION CONSTRUCTION



CSS and Construction

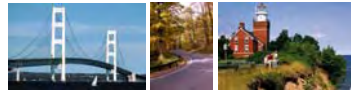
- Include stakeholders in change orders
- Establish clear communications channels
- Reduce unforeseen adverse impacts
- Inform public
- Sustain community businesses and institutions
- Create positive impressions of community





CSS and Delivery Methods

- Design-Bid-Build
- Design-Build

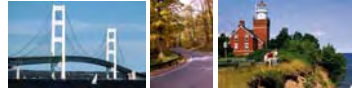


CSS and Delivery Methods Design-Bid-Build

- DOT-led activity
- Continued stakeholder participation
- CSS approach required within specifications
- Recommended CSS training for contractor



I-94, Wayne County, MI

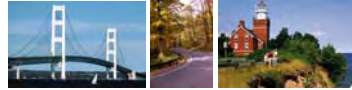


CSS and Delivery Methods Design-Build

- Design guidelines in place
- Contractor-responsible activity
- Continued stakeholder participation
- CSS applications required within contract
- Required CSS training for contractors



Rochester, MN



Conclusion

To ensure the project is delivered to the satisfaction of the stakeholders, the CSS approach must continue through project implementation.

