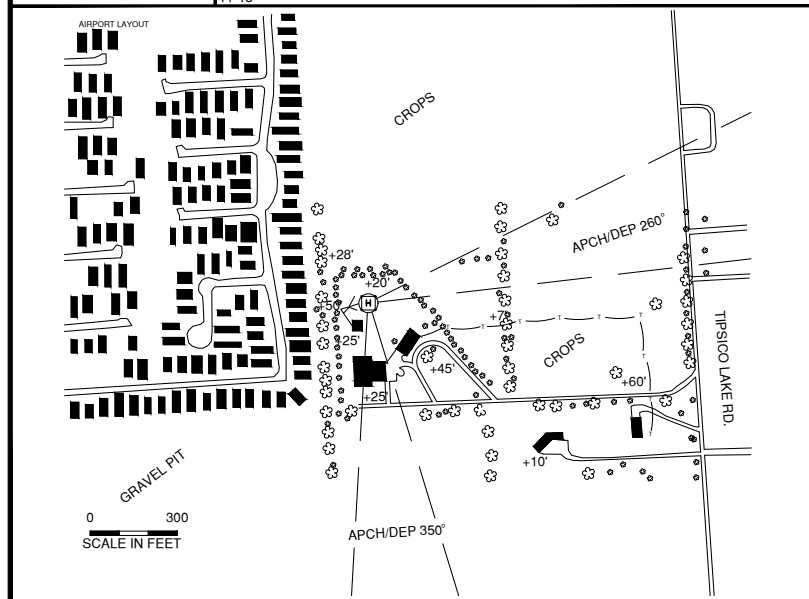
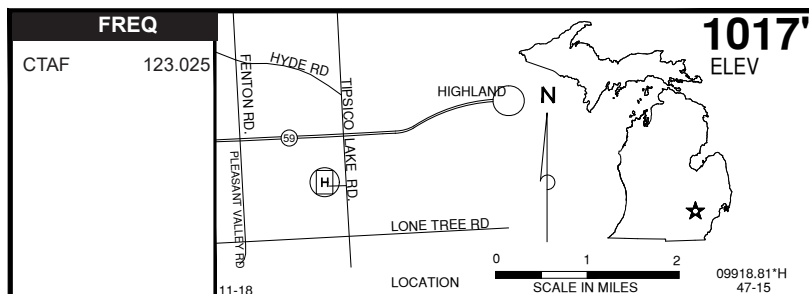


HIGHLAND, PONDEROSA HELIPORT (13D)



H

LANDING AREA
18'x18' (Concrete)

42° 37.75'N
083° 40.99'W

License
Heliport

FM CITY: 4.0 mi W
LGTT: Perimeter, VASI (260° Apch) - PCL CTAF
3X Dusk-Dawn
MGR: Bruce Douglass
PH: 248-887-3821
248-396-2543 (Cell)
FBO: None
ATND: Days irreg

NAV AIDS: 111.0 (PSI) 243° 7.8 NM to fld.
FUEL: None
RPR: None
WX: None
SNW RMVL: None
TRNSP: None
MEALS: None
RON: None

- Deer on & invof heliport.
- Hangar access - depress V, then simultaneous III - II, then I
- App/Dep 260° & 360°