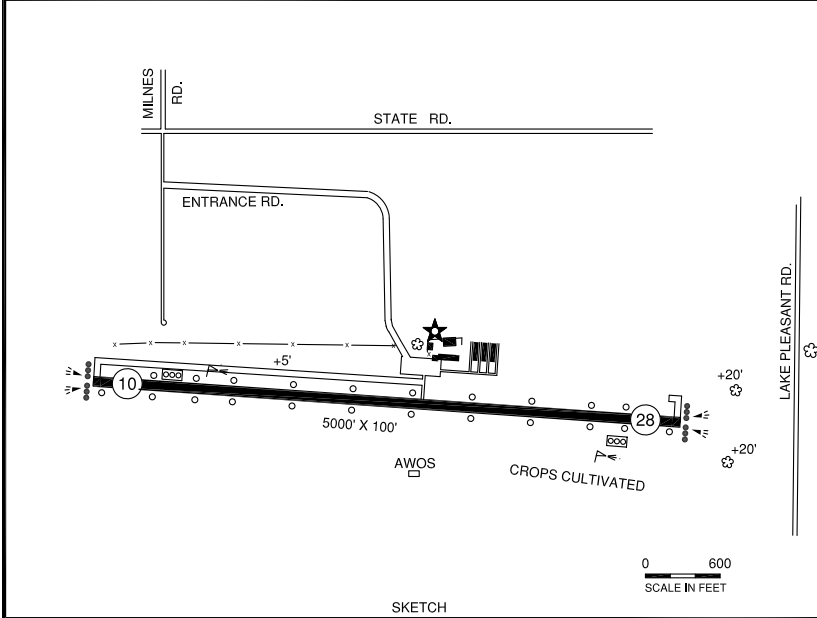
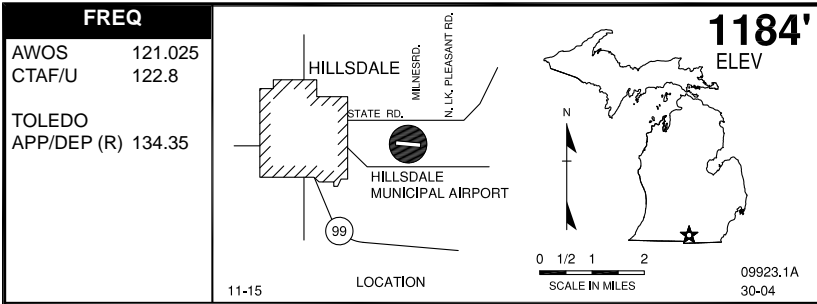


HILLSDALE MUNICIPAL (JYM)



RWY LENGTH BEYOND DISPLACED THR

10/ —
28/ —

COORDINATES

41° 55.28'N
084° 35.20'W

License
General Utility

FM CITY: 3.0 mi E

LGT: ROTG BCN. HIRL, REIL, PAPI rwy
10/28 - CTAF

MGR: Jason T. Walters
Ginger Moore, Asst

PH: 517-797-4833

FBO: Patriot Aviation 517-320-4833
Skyhigh Aviation Solutions LLC 517-320-4833

ATND: 0800-1700
Clsd Sun

NAV AIDS: IAP, 111.2 (LFD) 142° 11.6 NM to fld.

FUEL: 100LL, JET A 24 hr self svc

RPR: Major A&P

WX: AWOS 517-437-5638,

WX briefing system

SNW RMVL: Yes

TRNSP: CC (by prior arngmt), Rntl car (in town)

MEALS: In town, 3.0 mi

RON: In town, 4.0 mi