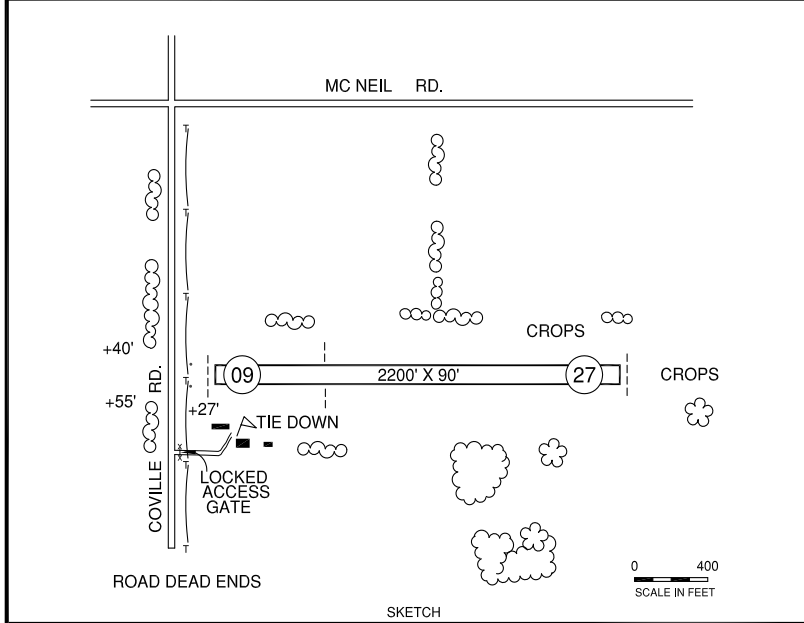
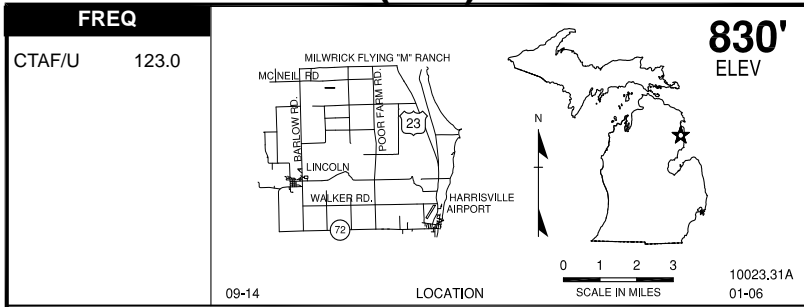


LINCOLN, MILWRICK FLYING "M" RANCH (3L7)



L

RWY LENGTH BEYOND DISPLACED THR
09/ 1600'
27/ —

COORDINATES
44° 44.31'N
083° 22.78'W

License:
Basic Utility

FM CITY: 3.0 mi N
LGT: None
MGR: Nancy Milwrick
PH: 989-736-1098
FBO: None
ATND: Ireg May - Oct (Owner resides at arpt)
Clsd Nov - Apr and when snw covered.

NAV AIDS: 116.9 (ASP) 010° 18.0 NM to fld.
FUEL: None
RPR: None
WX: None
SNW RMVL: No
TRNSP: By prior angmt
MEALS: 5.0 mi
RON: In town, 5.0 mi

- Rwy 09 apch +32' pline mkd with yellow spheres.
- Rwy soft in spring.
- Rwy slopes down from west to east, ireg terrain.
- Arpt access gate locked. call mgr for access.
- Deer on and invof rwy.