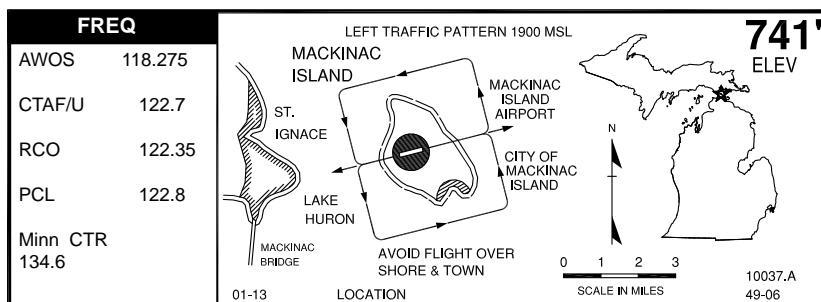
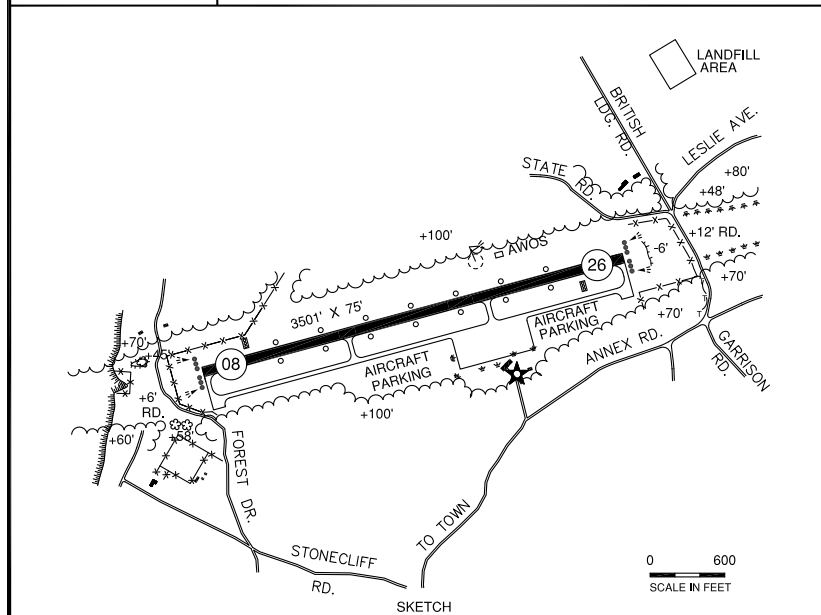


# MACKINAC ISLAND (MCD)



**741'**  
ELEV

**M**



## RWY LENGTH BEYOND DISPLACED THR

08/ —  
26/ —

## COORDINATES

45° 51.89'N  
084° 38.22'W

**License**  
General Utility

**FM CITY:** 2.0 mi NW

**LGT:** ROTG BCN. MIRL, PAPI, REILS—STD  
PCL 122.8.

**MGR:** Myron Johnson  
Dennis A. Bradley, Asst

**PH:** 906-847-3231

**FBO:** None

**ATND:** 0800-1700

**RDO NAV AIDS:** IAP, 111.8 (PLN) 011° 14.1  
NM to fld.

**FUEL:** None

**RPR:** None

**WX:** AWOS 906-847-3778, HIWAS,  
WX briefing system

**SNW RMVL:** Yes

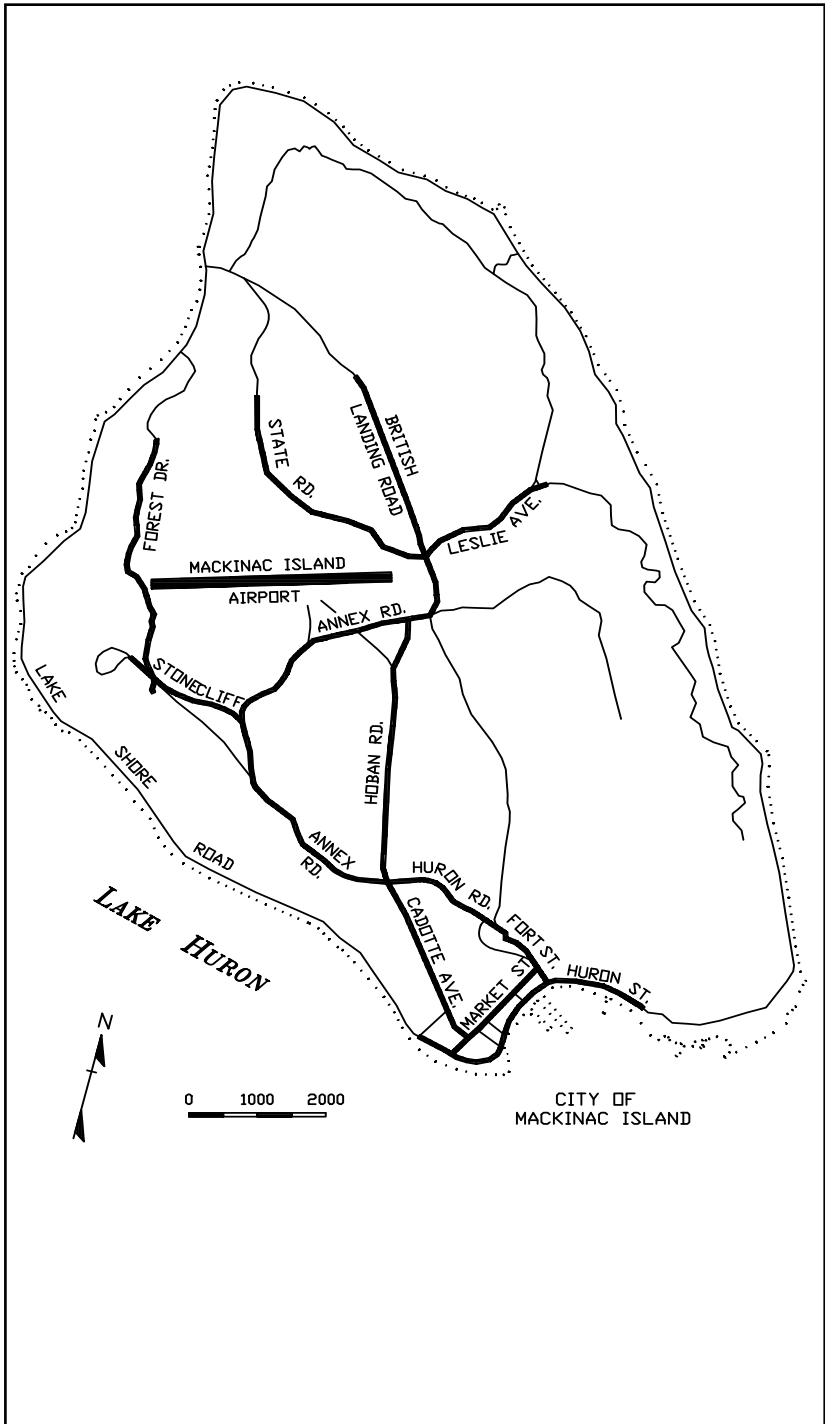
**TRNSP:** Taxi (horse carriage)

**MEALS:** In town, 2.0 mi

**RON:** In town, 2.0 mi

- TPA 1900' MSL (1159' AGL) .
- Noise abatement proc—climb to TPA (1900' MSL) before turn, avoid flight over shore & town.
- T&G operations prohibited.
- Lndg fee.
- Admin bldg access—depress V, then simultaneous III-II, then I.
- Pilots are encouraged to use PITOT covers while parked & to check PITOT tubes prior to dep due to mud daubers.
- May experience loose aggregate on the runway.
- Birds on & invof aprt. Flocks of seagulls invof landfill 0.3 mi NE.
- No camping allowed.

# MACKINAC ISLAND ROAD & TRAILS



**M**