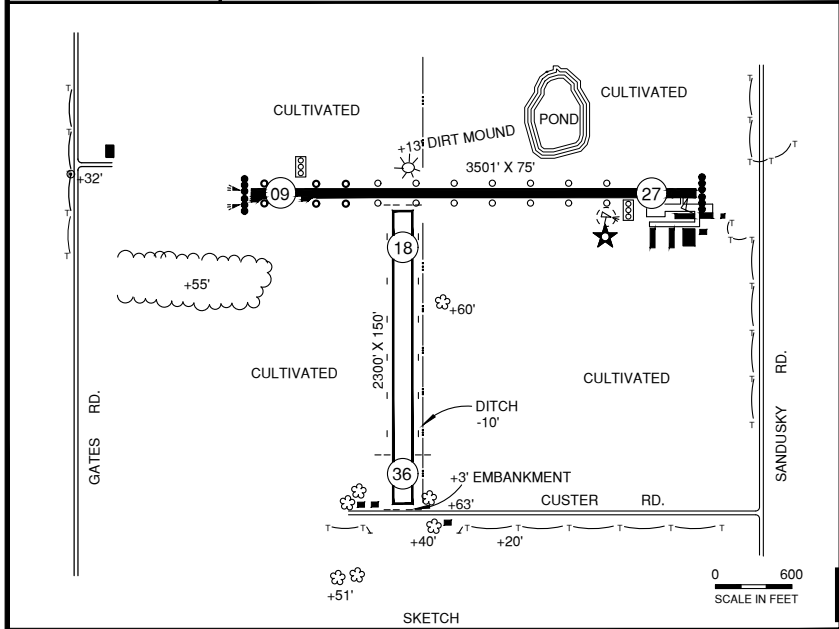
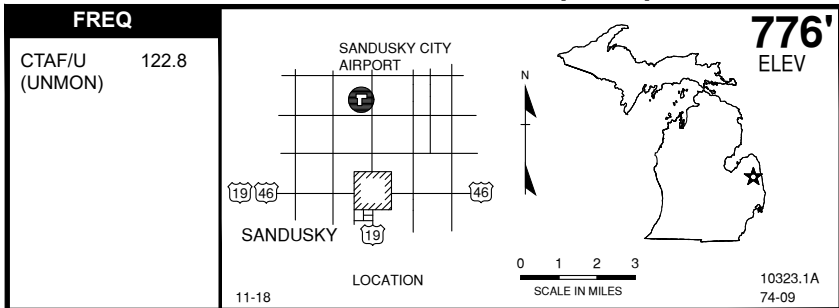


SANDUSKY CITY (Y83)



S

RWY LENGTH BEYOND DISPLACED THR
 09/ — * 18/ —
 27/ — * 36/ 1917'

COORDINATES
 43° 27.34'N
 082° 50.51'W

License
 General Utility

FM CITY: 2.5 mi N
LG: ROTG BCN REIL, MIRL, PAPI rwy 9/27
 PCL CTAF 5X.
MGR: Don Johnston
 Arlen Hacker, Asst
PH: 810-414-3009
 810-404-3781 (Mgr cell)
 810-648-4444 (City Hall)
 810-404-8656(Asst)
FBO: FlyBoys 989-823-4273
 McKeand Avn 810-650-6314
 Sandusky Flight Academy 810-404-9161
ATND: 0900-1630

NAV AIDS: 112.9 (MBS) 275° 51 NM to fld.
FUEL: 100LL*
RPR: Major A&P
WX: Wi-Fi
SNW RMVL: Yes—to vfy cond
TRNSP: Sanilac Trans Bus 810-648-9766
 Taxi 810-404-8294
 CC call ahead 810-414-3009
MEALS: In town
RON: In town

- *24 hr Self Serve credit card.
- Rwy designation may change in 2018 from 09-27 to 10-28.
- Birds & deer on & invof arpt.
- 3 ft embankment 50' from Rwy 36 thr.
- Admin bldg access- depress 5-3-2-1-*
- RC model acft oper S E rwy 27.
- Light sport acft act on & invof arpt.