

# TRAVERSE CITY, CHERRY CAPITAL (TVC)

FREQ	
ATIS/ASOS	119.175
GND	121.8
TWR / CTAF*	124.2
MINNEAPOLIS CNTR (R) 132.9	
LANSING FSS	122.2
RCO, DF	122.65
UNICOM 122.95	

LOCATION

**624'**  
ELEV

10379.A  
28-01

0 1 2  
SCALE IN MILES

SKETCH

0 500 1000 1500  
SCALE IN FEET

## RWY LENGTH BEYOND DISPLACED THR

10/ — \* 18/ 5108'  
28/ — \* 36/ —

## COORDINATES

44° 44.50'N  
085° 34.91'W

**License**  
Air Carrier

**FM CITY:** 2 mi S

**LGT:** ROTG BCN. ACTIVATE HIRL Rwy 10–28, MIRL Rwy 18–36, and MALSR Rwy 10 & 28 and REIL Rwy 36—CTAF. VASI Rwy 18, 36 PAPI Rwy 10-28 opr 24 hrs.

**MGR:** Kevin Klein, A.A.E.

**PH:** 231-947-2250

**FBO:** AvFlight 231-929-1126

**ATND:** 0400-0100

**NAV AIDS:** IAP, 114.6 (TVC) 345° 4.6 NM to fld, ILS 110.7.

**FUEL:** 100LL, cc self srv (PPR) FBO hrs, JET A+

**RPR:** Major A&P, Avncs

**WX:** HIWAS, ASOS 231-486-2920

**SNW RMVL:** Yes

**TRNSP:**Rntl car (at arpt), taxi, Dial-A-Ride

**MEALS:** At arpt, vcnty

**RON:** 1.0 mi CC

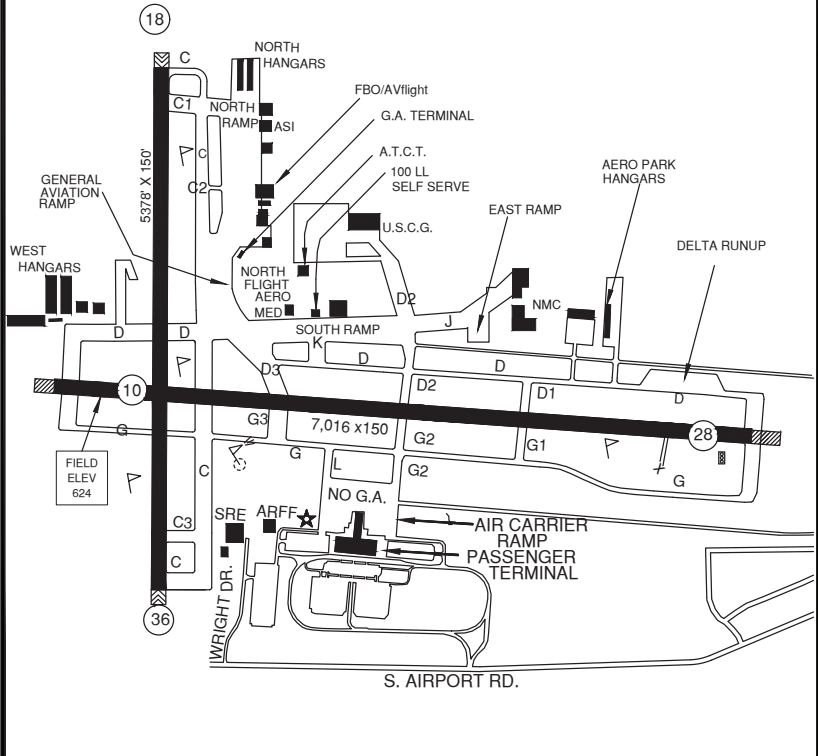
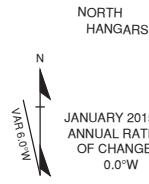
- All acft charged Lndg fee, except pvt owned single engine acft.
- All acft charged overnight parking fee, exempt military.
- FAA Class "D" Airspace durg \*twr opns (0700-2100 est, 0700-2200 edt ), otr times Class "E".
- LAHSO; ldg rwy 18 hold-short point 10/28 avbl ldg dist 2850'.
- LAHSO; ldg rwy 28 hold-short point 18/36 avbl ldg dist 5950'.
- Snw rmvl opns in prog wint mos, vehicle oper monitor CTAF.
- Arpt sfc cond unmon 0100-0400
- \*For arpt info when twr clsd, call 231-313-0928
- Para sailing opns 1.5 NM N.E. of TVC, Memorial Day- Labor Day 600' AGL SR-SS daily.
- Birds & Deer on & invof arpt.

# TRAVERSE CITY, CHERRY CAPITAL TAXIWAY

FREQ	
ATIS/ASOS	119.175
GND	121.8
TWR / CTAF*	124.2
MINNEAPOLIS CNTR	
(R)	132.9
LANSING FSS	
RCO, DF	122.2
	122.65
UNICOM	122.95

CAUTION: BE ALERT TO RUNWAY CROSSING CLEARANCES.  
 READBACK OF ALL RUNWAY HOLDING INSTRUCTIONS IS REQUIRED.

624'



T