



News & Notes

The MI School Data Grant is administered by Macomb ISD in collaboration with Kalamazoo RESA and Shiawassee RESD. For questions, please contact Kristina Martin at kmartin@mysd.net



A publication of the MI School Data Train-the-Trainer Network

Talking Points for School Leaders

MI School Data – Regional Advisory Spotlight



This month's Spotlight is on the **Orange Region** of the MI School Data Regional Advisory Professional Development Network. There are six (6) ISD/ESDs represented in this region. The regional advisory members are Dr. Jennifer Parker from Macomb ISD and Dr. Lisa Lockman from Wexford-Missaukee ISD. Let's learn more from the regional leads on what is happening in the Intra-Michigan Consortium.

Orange Region Intra-Michigan Consortium

- COOR ISD
- Macomb ISD
- Manistee ISD
- Traverse Bay Area ISD
- West Shore ESD
- Wexford-Missaukee ISD

How are you using the MI School Data redesign?

"We have been sharing out the new site with educational leaders, school improvement facilitators, and key stakeholders. The feedback has been very positive - participants like the new Educator Persona, the Compare tool, and the new Landing Pages. They also really like how the data flows through the pinhole to MICIP."

What is the value of Professional Development in your region?

"Our Region is leading the Statewide Webinar Series and have seen hundreds of educators! We have been running one hour sessions that spotlight how to get started, the K-12 Educator overview, using specific features of the portal (e.g. School Accountability), or speaking to target audiences like Special Education, Early Childhood, or Career and Technical Education. Our webinar series currently runs through May, but we may be adding sessions due to popular demand!"

What has your role been on the Regional Advisory?

Besides representing the PD needs of the Orange Region, Lisa and Jennifer coordinate the MI School Data Statewide Webinar series, participate in the Big 10 Network, and create content for the EduPaths online courses. Lisa facilitates conversations on MI School Data at GELN (General Education Leadership Network), MCH/Actionable Data, MICIP, and leads the MI Strategy Bank. Jennifer presents regularly to the MCIFN (Michigan Continuous Facilitators Network), manages MI School Data Statewide PD, and coordinates the Train-the-Trainer network.



Dr. Jennifer Parker
Macomb ISD



Dr. Lisa Lockman
Wexford-Missaukee ISD

Webinar Series MI School Data Professional Learning Opportunities (SCECHs Available)

Join us in the **2020-2021 school year** for these **FREE webinar/virtual sessions** to learn basics or receive technical updates on what's new in the MI School Data portal. Hosted virtually by Macomb ISD (**Orange Region**). Earn 1.0 SCECH for each course.

Date	Time	Program Title/Registration Link
Monday, January 11, 2021	10:00-11:00 a.m.	Getting Started in MI School Data Redesign
Monday, January 11, 2021	1:00-2:00 p.m.	Exploring CTE, Workforce, and Postsecondary Data in MI School Data
Wednesday, January 20, 2021	3:00-4:00 p.m.	Exploring Local Data Sources, MI School Data, and MICIP for Continuous Improvement
Wednesday, February 10, 2021	10:00-11:00 a.m.	Exploring the School Index, AER, and Accountability in MI School Data
Wednesday, February 10, 2021	3:00-4:00 p.m.	Public Personas in MI School Data—Data Stories for Parents, Policymakers, and Media
Wednesday, March 10, 2021	3:00-4:00 p.m.	The School Leader's Guide to MI School Data
Wednesday, April 14, 2021	4:30-5:30 p.m.	MI School Data for New Teachers
Thursday, April 15, 2021	3:00-4:00 p.m.	Data Driven Dialogue-Trends in Achievement and Demographic Data in MI School Data
Tuesday, May 4, 2021	3:00-4:00 p.m.	PK20 Data in MI School Data-Curriculum, Counseling, and Postsecondary Connections

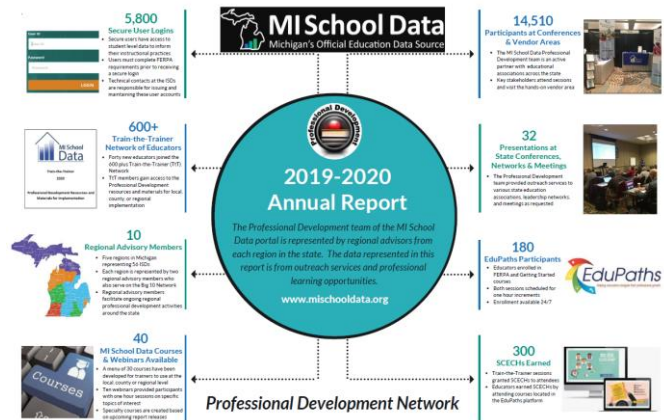
Please Note: To receive access information for these virtual sessions, or to receive the link to the virtual recordings, you must be REGISTERED. A virtual link to access the live broadcast will be sent to those who register prior to the session (Pre-Broadcast). In addition, a link to the virtual recording will be shared after the session ONLY TO REGISTERED PARTICIPANTS (Post-Broadcast). Contact Information: Dr. Jennifer Parker, jparker@mysd.net

MI School Data – Professional Development Network Releases Annual Report

The Professional Development Network of the MI School Data has recently released the **2019-2020 Annual Report** for the grant cycle October 1, 2019 to September 30, 2020. During this time period, highlights to the right include:

- ❖ **5,800** Secure User Logins
- ❖ **600+** Train-the-Trainer Network of Educators
- ❖ **10** Regional Advisory Members
- ❖ **40** Courses & Webinars Available
- ❖ **14,510** Participants at Conferences & Vendor Areas
- ❖ **32** Presentations at State Conferences, Networks & Meetings
- ❖ **180** EduPaths Participants
- ❖ **300** SCECHs Earned

To download the Annual Report, [click here](#).



MI School Data and Michigan Integrated Continuous Improvement Process (MICIP)

In July 2019, the Big 10 Network was established and included key stakeholders who explored connections between existing and planned Michigan initiatives (e.g. MICIP, data hub, etc.) and the MI School Data Redesign. Representatives from several ISD/RESA/RESD's, MDE, CEPI, MAISA, as well as many work groups that support Michigan's Top 10 Strategic Plan initiatives began the collaboration.

Over the past 18 months, members reviewed connections to the Civil Rights Data Collection, MiPHY, the ASCD WSCC



and MICIP, existing MI School Data logins and permissions, and previous collection of data through the Data Tools for School Improvement. The group



also reviewed the data types and locations (process, perception, demographic and achievement) for educator access.

MI School Data Redesign was launched to the public on October 28, 2020. The MICIP team announced the MICIP platform is ready for statewide use on January 4, 2021. Congratulations to both stakeholder groups on their collective efforts to deliver integrated tools and systems to serve our educational entities now and into the future.

MI School Data Public Releases

Recently Released

- [Annual Education Report](#) – report displays detailed information on high school graduation data, teacher quality, NAEP, and Section 1003 School Improvement funds for schools, districts, and the state (2019-20 data).
- [Educator Effectiveness](#) - school district teacher and administrator evaluation ratings (2019-20 data). *Please note due to COVID-19, many educators were not evaluated during the 2019-20 school year.*
- [Extended COVID-19 Learning Plan Dashboard](#) – district learning plans during the pandemic are updated monthly based on how instruction is provided to students. Last data collection was December 9, 2020.
- [Parent Dashboard](#) – metrics have been updated for **Teacher Retention** (2018-19 data), **Qualified Teaching Staff** (2019-20 data), and **Teacher Years of Experience** (2019-20 data).

Coming Soon

- [Early Childhood Program Participation](#) – report shows the number of children enrolled in Childcare Subsidy, Early On®, Early Childhood Special Education, Great Start Readiness Program, Head Start and GSRP/Head Start Blend prior to kindergarten (2019-20 data).
- [K-3 Absenteeism and Early Childhood Participation](#) – report provides attendance rates of K-3 students who participated in early childhood programs before entering kindergarten, such as GSRP, GSRP/Head Start Blend, Head Start, Early Head Start, Early Childhood Special Education or Early On® (2019-20 data)
- [Postsecondary Reports](#) – displays how high school students are performing after graduating high school, where and when they enroll in college, if they are staying on track and graduating on time, and if they require remedial coursework (2019-20 data).

*Secure users have permissions to view secure reports on MI School Data. If you're a school, district or ISD employee, contact your [ISD Technical Contact](#) to request account activation. If you're a college or university employee contact your [college/university keyholder](#).

ISD/RESA Directory for Curriculum, Accountability, Technical, & Train-the-Trainer

Each month the MI School Data advisory team provides to CEPI updated contacts for the ISD/RESA directory. [Click here](#) for the January 2021 directory. If any contacts have changed for the 2020-21 school year within your ISD/RESA, please provide the update(s) to your ISD/RESA General Education Leadership Network (GELN) contact.