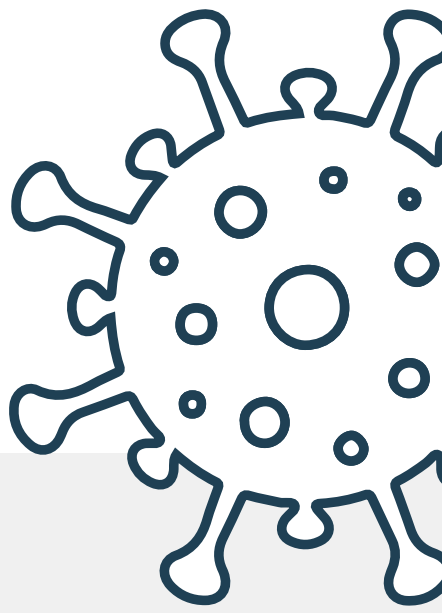
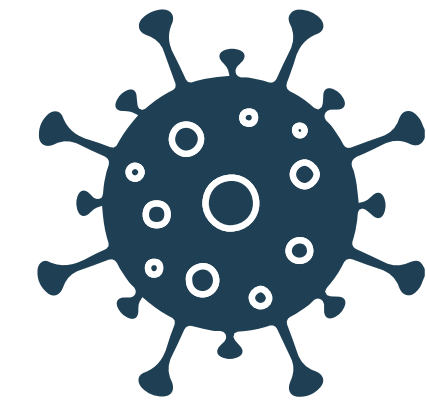




Beginning June 1:



- There will no longer be capacity limits outdoors.
- There will no longer be capacity limits at residential gatherings.
- Indoor establishments will be at 50% capacity.
- Social gatherings will now be regulated only by the venue.
 - *For example, guidelines or rules for an indoor wedding or conference would be set by the establishment in which it is hosted.*
- Face masks continue to be required for non-vaccinated individuals indoors.



Beginning July 1, all broad epidemic orders will be lifted.