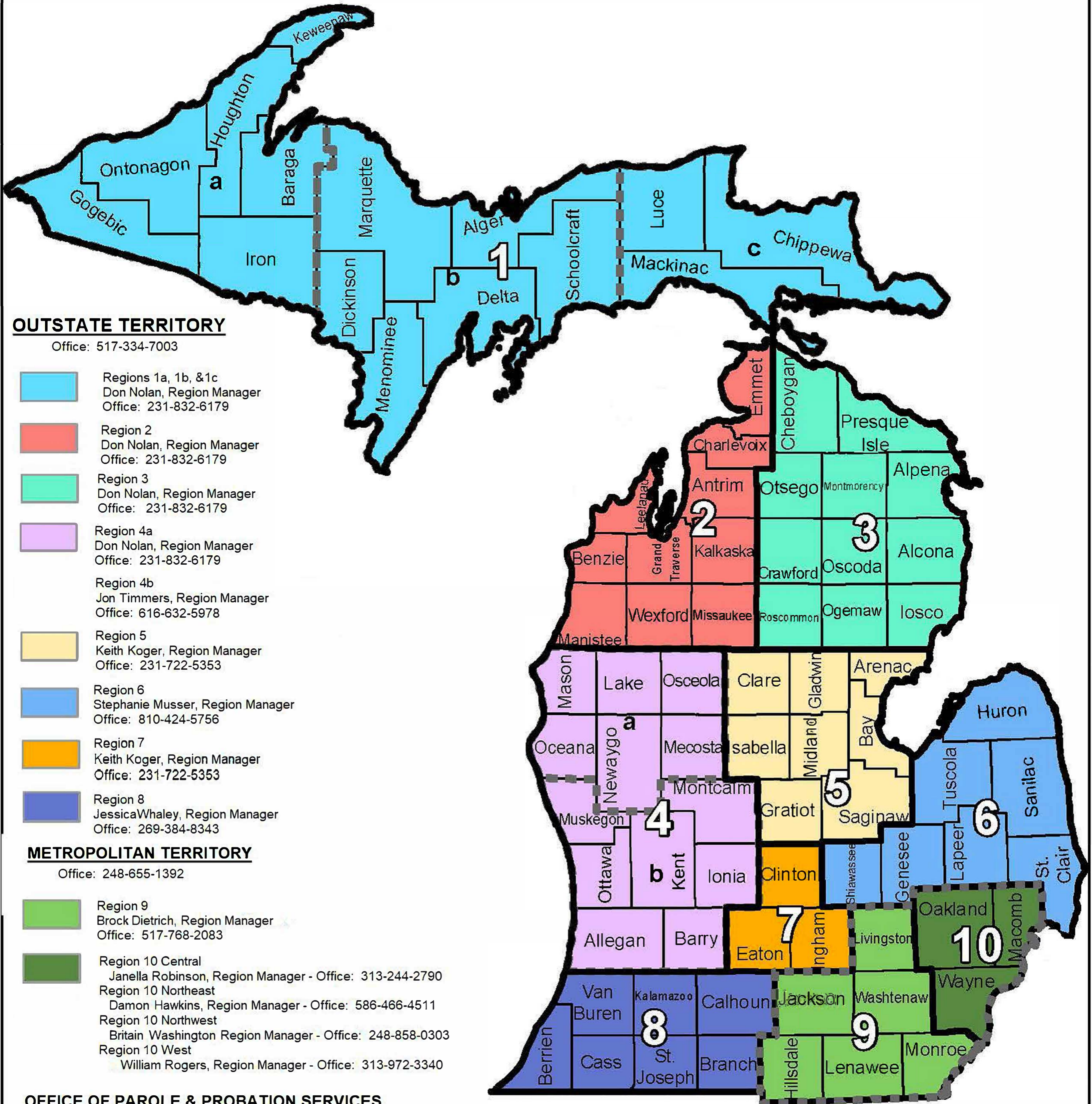


# MICHIGAN DEPARTMENT OF CORRECTIONS

## FIELD OPERATIONS ADMINISTRATION



### OUTSTATE TERRITORY

Office: 517-334-7003

■ Regions 1a, 1b, & 1c  
Don Nolan, Region Manager  
Office: 231-832-6179

■ Region 2  
Don Nolan, Region Manager  
Office: 231-832-6179

■ Region 3  
Don Nolan, Region Manager  
Office: 231-832-6179

■ Region 4a  
Don Nolan, Region Manager  
Office: 231-832-6179

Region 4b  
Jon Timmers, Region Manager  
Office: 616-632-5978

■ Region 5  
Keith Koger, Region Manager  
Office: 231-722-5353

■ Region 6  
Stephanie Musser, Region Manager  
Office: 810-424-5756

■ Region 7  
Keith Koger, Region Manager  
Office: 231-722-5353

■ Region 8  
Jessica Whaley, Region Manager  
Office: 269-384-8343

### METROPOLITAN TERRITORY

Office: 248-655-1392

■ Region 9  
Brock Dietrich, Region Manager  
Office: 517-768-2083

■ Region 10 Central  
Janella Robinson, Region Manager - Office: 313-244-2790  
Region 10 Northeast  
Damon Hawkins, Region Manager - Office: 586-466-4511  
Region 10 Northwest  
Britain Washington, Region Manager - Office: 248-858-0303  
Region 10 West  
William Rogers, Region Manager - Office: 313-972-3340

### OFFICE OF PAROLE & PROBATION SERVICES

Office: 517-335-3953