



RICK SNYDER
GOVERNOR

STATE OF MICHIGAN
DEPARTMENT OF ENVIRONMENTAL QUALITY
LANSING



DAN WYANT
DIRECTOR

August 3, 2012

Ms. Susan Hedman
Regional Administrator
United States Environmental Protection Agency
Region 5
77 West Jackson Boulevard (R-19J)
Chicago, Illinois 60604-3590

Dear Ms. Hedman:

This letter is in response to your March 15, 2011, letter regarding the fee demonstration for Michigan's Renewable Operating Permit (ROP) program.

As the Director of the Michigan Department of Environmental Quality (MDEQ), I hereby submit an update to Michigan's November 9, 2010, Title V Submittal (2010 Submittal) to address your concerns about the adequacy of fee funding for Michigan's ROP program.

Section 502(b) of the federal Clean Air Act and 40 CFR §70.9 mandate that a permitting authority collect fees from subject sources that are sufficient to cover the Title V program expenses and that those fees are used solely to cover the costs of the Title V program. The ROP program is now adequately funded to sufficiently administer and enforce the minimal elements required for a Title V program in Michigan.

Effective October 4, 2011, Michigan's Legislature established a new fee formula and extended authority to collect all fees until October 2, 2015. The MDEQ has increased the efficiency of the ROP program through the hiring of new staff, the redeployment of existing staff, prioritization of work, and a Lean Process Improvement project to address the ROP issuance process. Under these changes, the ROP issuance rate has greatly improved. In addition, the MDEQ is on track to meet the evaluation frequency recommended in the Compliance Monitoring Strategy. Further cost reduction measures are expected for the MDEQ in the future as the State of Michigan makes structural changes to its finances; focuses on legacy costs; and addresses rent, technology, and other overhead charges.

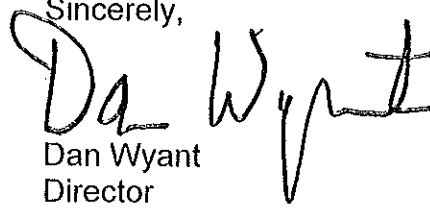
Enclosed are 3 copies of updates to Michigan's 2010 Submittal. Attachment 1 provides a revised Permit Fee Demonstration. Attachment 2 is a detailed discussion of program changes that address the previously identified implementation deficiencies. Attachment 3 includes a list of specific components of the 2010 Submittal that are being replaced by enclosures to this submittal.

Ms. Susan Hedman
Page 2
August 3, 2012

The update to Michigan's 2010 Submittal will be completed at a later date with recently promulgated changes to the ROP rules to address greenhouse gases, streamlined renewal application forms, updated policies and procedures, and other changes that reflect program implementation improvements that result from the 2010 Lean Process Improvement project.

If you have any questions regarding this matter, please contact Mr. G. Vinson Hellwig, Chief, Air Quality Division, at 517-373-7069, or you may contact me.

Sincerely,

A handwritten signature in black ink that reads "Dan Wyant". The signature is written in a cursive style with a large, looped "D" and a long, sweeping "y".

Dan Wyant
Director
517-373-7917

Enclosures

cc/enc: Mr. Jim Sygo, Deputy Director, MDEQ
Mr. G. Vinson Hellwig, MDEQ
Ms. Lynn Fiedler, MDEQ
Ms. Teresa Seidel, MDEQ
Ms. Mary Ann Dolehanty, MDEQ

ATTACHMENT 1 - Michigan's 2010 Title V Submittal Update – July 2012

Update to Section VII. Pages 24-27 of the 2010 Submittal

VII. PERMIT FEE DEMONSTRATION

A. Sources Subject to Fee Collection

Fee-subject facilities are defined in Section 5501 of Act 451. There are two categories of Title V sources in the Michigan fee program. Category I facilities are major sources as defined under Section 302 of the federal CAA. These major sources have the potential to emit 100 tons per year of any regulated air pollutant, including nitrogen oxides, particulate matter less than 10 microns, sulfur dioxide, volatile organic compounds, carbon monoxide, and lead. Category II facilities are either a major source as defined in Section 112 of the CAA (a source that has the potential to emit 10 tons per year of any single Hazardous Air Pollutant (HAP) or 25 tons per year of any combination of HAPs) or a facility subject to the requirements of Section 111 of the CAA's Standards of Performance for New Stationary Sources. A Category II facility that also meets the definition of a Category I facility is classified as a Category I facility. Section 5501 also requires fees for Category III facilities not subject to the CAA's Title V program.

Michigan currently has approximately 800 sources subject to the fee requirements. A list of these sources and the FY12 assessed fees is provided as an update to Attachment M1.

B. Calculation of Emissions

All Category I and II facilities are required to report information necessary for calculating actual emissions to the Michigan Air Emissions Reporting System (MAERS). The actual rates of emissions in tons per year emitted during a calendar year are calculated based on actual operating hours, production rates, in-place control equipment, emission factors, and types of materials processed, stored or combusted during the period of calculation.

Actual emissions are calculated in MAERS for all criteria pollutants and pollutants that result in the formation of a criteria pollutant.

C. Fee Requirements and Schedule

The annual fee program is completely contained in Section 5522 of Act 451 (Section 5522). Section 5522 provides authority to the Department of Environmental Quality (DEQ) to collect an annual air quality fee from the owner or operator of each fee-subject facility in the state. This statute provides for a facility fee and a baseline charge of dollars per ton of actual emissions for all regulated air pollutants (except for carbon monoxide). Fees are based on the reported emissions of the following pollutants: particulate matter less than 10 microns, sulfur dioxide, volatile organic compounds, nitrogen oxides, lead, non-methane organic compounds, and hydrochloric acid.

The provisions of the Michigan fees are found in the updated Attachment M2. For the majority of sources, the billable emissions are capped at 4000 tons for all pollutants, or the sum of up to 1,000 tons for each pollutant if the total is less than 4,000 tons. For Electric Providers, the billable emission caps are 5250 for the total of all pollutants and 1,250 tons for each pollutant. Municipal electric generating facilities have a separate fee structure.

ATTACHMENT 1 - Michigan's 2010 Title V Submittal Update – July 2012

Update to Section VII. Pages 24-27 of the 2010 Submittal

D. Mechanism for Assuring that Fees are Used Solely for Funding the ROP Program

Section 5521 of Act 451 established the Emissions Control Fund within the State Treasury. Monies expended from this fund are only for activities that relate to implementing the Title V requirements through the Michigan's Title V (ROP) program. Section 5522 requires a yearly report to the Governor and the Legislature for each Department to which funds are appropriated from the Emissions Control Fund. This report must detail the activities funded by the Emissions Control Fund. A copy of the *Air Quality Division Annual Program Report - Fiscal Year 2011* is provided as an updated Attachment M3.

E. Use of Required Fee Revenue

Currently, the DEQ's AQD includes 174 full-time equivalent (FTE) positions. In FY12, the ROP program revenue is funding 60 FTEs in the AQD and one position in the Clean Air Assistance Program of the DEQ's Office of Environmental Assistance. A copy of the current AQD Organizational Chart is provided as an update to Attachment B2.

The ROP program resources are used in the following ways:

1. To fund salary, fringe benefits, training, supplies, computers, services and legacy costs,
2. To fund contractual services,
3. To purchase equipment,
4. To fund support services (such as legal counsel) conducted by other Michigan agencies, and
5. To cover indirect costs, such as overhead costs related to information technology and the overall administration of the DEQ.

The allocation of fees is provided on page 4 of the Annual Report in the updated Attachment M3.

F. ROP Program Costs for Fiscal Year 2010 through 2015

Annual ROP program costs for FY 2010 through 2012, as well as projected costs through 2015 are provided as the update to Attachment M4. The report itemizes the ROP fees received, the actual program costs, and the fund balance.

As part of Title V, the EPA sets a presumptive minimum for a state's fee collection. The federal presumptive minimum rate (\$/ton) is adjusted yearly based upon the Consumer Price Index. The federal fee formula does not include a facility-wide emission cap, but does set a cap of 4,000 tons for each pollutant.

ATTACHMENT 1 - Michigan's 2010 Title V Submittal Update – July 2012

Update to Section VII. Pages 24-27 of the 2010 Submittal

A quick comparison of Michigan's fees collected for the ROP program and the federal presumptive minimum for FY10 through FY12 is shown below.

FISCAL YEAR	NUMBER OF FEE SUBJECT SOURCES	MICHIGAN ROP FEES COLLECTED	FEDERAL PRESUMPTIVE MINIMUM
FY10	826	\$9,718,000	\$10,630,000
FY11	829	\$9,064,000	\$ 9,730,000
FY12	798	\$9,600,000	\$9,899,000

Over the years, there have been changes in fee revenue collected and corresponding adjustments in staffing levels. The annual ROP fees collected in between FY10 and FY12 and the corresponding FTE positions in DEQ conducting ROP work are charted below. The projections for FY13 are also included.

FISCAL YEAR	FTEs	ROP FEES COLLECTED	NUMBER OF ROPs
FY10	74.0	\$9,718,000	385
FY11	59.0	\$9,064,000	380
FY12	60.0	\$9,600,000	373
Projected FY13	61.0	\$9,744,000	375

* There are at least 7 sources subject to the new greenhouse gas regulation that will be required to obtain ROPs; however, no fees will be charged to these sources.

The DEQ has increased the efficiency of the ROP program through the hiring of new staff, the redeployment of existing staff, prioritization of work, and a Lean Process Improvement project to address the ROP issuance process. Further cost reduction measures are expected for the DEQ in the future as the State of Michigan makes structural changes to its finances, focuses on legacy costs, and addresses rent, technology, and other overhead charges.

The DEQ is on track to meet the evaluation frequency recommended in the Compliance Monitoring Strategy. In addition, the ROP issuance rate has increased. Therefore, the level of fees collected is sufficient for the DEQ to adequately administer and enforce the required minimum elements of the Title V permit program required in Section 502(b) of the CAA.

ATTACHMENT 2

MICHIGAN TITLE V PROGRAM SUBMITTAL UPDATE – July 2012

ROP Program Deficiency Resolution

The following discussion provides details of how program deficiencies described in Michigan's 2010 Submittal have been addressed.

- In July 2010 a Lean Process Improvement initiative was undertaken to design a more efficient and effective Renewable Operating Permit (ROP) issuance process. The effort brought together internal and external stakeholders and resulted in several products which were adopted by the Department by the fall of 2011.

Results include more efficient use of permittee and AQD resources. The ROP renewal application process has been streamlined, with the applicant providing a mark-up of the existing ROP to more easily indicate changes needed and for staff to use as the basis for the working draft for permit renewal. Also, more communication opportunities between the applicant and the permit writer were created, including a pre-application meeting, establishment of a processing timeline to keep the permit on track, and a post-issuance evaluation process.

- The ROP fee allocations associated with overhead costs have been reduced as detailed in revised Attachment M4. Additional cost reductions are expected for the DEQ in the future as the State of Michigan makes structural changes to its finances, focuses on legacy costs, and addresses rent, technology and other overhead charges.
- The DEQ resumed processing ROP amendments and modifications as of February 1, 2012. Previous experience showed that the most efficient approach was to have a limited number of staff issue ROP revisions. Therefore, all ROP modifications are being processed by two designated compliance field staff.
- The Small Business Ombudsman function is now combined with the Clean Air Assistance Program (CAAP) funding allocation.
- One FTE in the Office of Environmental Assistance's CAAP is now adequate to provide the necessary assistance to ROP-subject facilities after new efficiencies in education and outreach came about from the Lean Process Improvement initiative. Ongoing work by CAAP and the MDEQ Air Quality Division staff will continue to provide additional training and assistance to small businesses.

ATTACHMENT 2

MICHIGAN TITLE V PROGRAM SUBMITTAL UPDATE – July 2012

ROP Program Deficiency Resolution

- Two vacant positions in the Enforcement Unit have been filled, which will allow Michigan to adequately address High Priority Violations of the ROP program.
- Four previously vacant positions in field offices have been filled to complete Title V-related tasks, including writing ROPs, performing inspections, reviewing compliance reports, etc. A supervisory position has been filled to oversee ROP implementation in the Lansing District and a staff vacancy will be filled this summer. As a result, the DEQ is on track to meet the evaluation frequency recommended in the EPA Compliance Monitoring Strategy. In addition, the ROP issuance rate has greatly improved.
- Changes to Michigan's ROP rules were promulgated, effective June 1, 2012, to incorporate the federal greenhouse gas (GHG) requirement for sources that emit above the specified GHG threshold levels to obtain a Title V permit. Implementation will proceed accordingly to meet the associated deadlines.

ATTACHMENT 3
Michigan's Title V Submittal Update – July 2012

Instructions for Updating the November 9, 2010 Title V Submittal

- STEP 1** Replace “Attachment A – Delegation of Authority from Governor to DNRE Director” with the new delegation letter.

Reason for change: On January 4, 2011, the Michigan Department of Natural Resources and Environment was abolished and the Michigan Department of Environmental Quality was re-established. On March 24, 2011, Governor Rick Snyder delegated authority to submit Title V program updates to Mr. Dan Wyant, Director of the Michigan Department of Environmental Quality.

- STEP 3** Replace “Attachment B2 – AQD Organization Chart” with updated May 2, 2012 AQD Organization Chart.

Reason for change: Alignment of staffing has changed since the 2010 Submittal.

- STEP 3** Replace “Attachment D1b - Act 451, Part 55” with updated Act 451, Part 55.

Reason for change: Act 451, Part 55 was revised by the Michigan Legislature to create a new ROP fee formula.

- STEP 4** Replace “Attachment M1 - Fee-subject Sources & Assessed Fees” with updated Attachment M1.

Reason for change: The list has been updated with the most current information available.

- STEP 5** Replace “Attachment M2 – Annual Air Quality Fee Calculations” with new Attachment M2.

Reason for change: The annual ROP fee calculations have been updated based on the new fee formula.

- STEP 6** Replace “Attachment M3 FY 2009 Annual Report” with new Attachment M3.

Reason for change: The 2011 Annual Report is now available.

- STEP 7** Replace “Attachment M4 – Annual ROP Program Costs; Revenue/ Expenditures/ Balance for Fiscal Years 2009-2011” with updated Attachment M4.

Reason for change: ROP program cost estimates are updated and expanded to include the projected costs through FY 2015.

- STEP 8** Remove “Attachment M5 – Comparison of AQD Fees and Federal Presumptive Minimum”.

Reason for change: The analysis of sufficient fees to implement the ROP program is based on resources needed, not on meeting or exceeding the Federal Presumptive Minimum level.



STATE OF MICHIGAN
EXECUTIVE OFFICE
LANSING

RICK SNYDER
GOVERNOR

BRIAN CALLEY
LT. GOVERNOR

March 24, 2011

Ms. Susan Hedman, Regional Administrator
U.S. Environmental Protection Agency
Region 5
77 West Jackson Boulevard (R-19J)
Chicago, Illinois 60604-3507

Dear Ms. Hedman:

The federal Clean Air Act requires Michigan to submit revisions to the State Implementation Plan and the Title V Program to the U.S. Environmental Protection Agency. It also provides an opportunity for the state to request delegations and make grant applications to fund air quality programs:

On January 4, 2011, Executive Order 2011-1 was issued abolishing the Michigan Department of Natural Resources and Environment and establishing the Michigan Department of Environmental Quality (MDEQ) and the Michigan Department of Natural Resources.

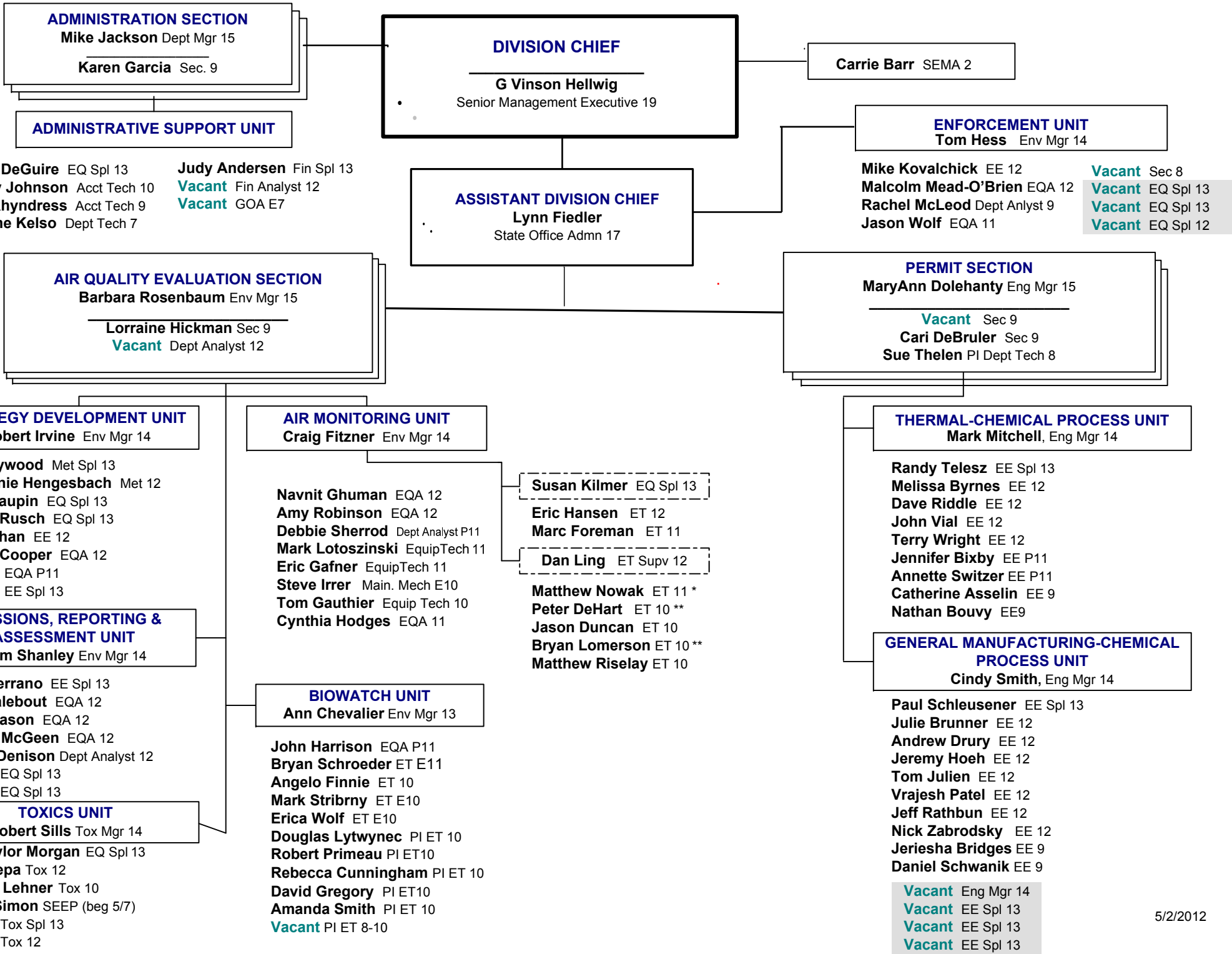
I hereby delegate the Governor's authority to make any submittal, request, or application under the federal Clean Air Act to Mr. Dan Wyant, Director, MDEQ. This delegation is effective as of March 13, 2011.

Sincerely,

A handwritten signature in cursive script, appearing to read "Rick Snyder".

Rick Snyder
Governor

cc: Mr. Dan Wyant, Director, MDEQ
Mr. Jim Sygo, Deputy Director, MDEQ
Mr. G. Vinson Hellwig, MDEQ



DIVISION CHIEF

G Vinson Hellwig
Senior Management Executive 19

ASSISTANT DIVISION CHIEF

Lynn Fiedler
State Office Admn 17

FIELD OPERATIONS

Teresa Seidel, Env Mgr 15
Kimberly Dohm Dept Tech 10

TECHNICAL PROGRAMS UNIT

Karen Kajiya-Mills Env Mgr 14

Tom Gasloli EQA 12
Jong Hee Yu EQA 12
Laura Brandt EE P11
Jessica Magro EQA 11

Nathaniel Hude EQA 9
(beg 7/16)
Vacant EQ Spl 13

SAGINAW BAY DISTRICT

Chris Hare LT Env Mgr 15
[Multi Media Coordinator]

Janet Davila Sec 9

Jennifer Lang EE Spl 13
Ben Witkopp EE 12
Kathy Brewer EQA 12
George Eurich EQA 12 (Toxics .5)
Richard Osentoski SEEP
Sharon LeBlanc EQA P11 (Asbestos .5)

UPPER PENINSULA DISTRICT

Vacant (Chris Hare, Acting) Env Mgr 14

Kathy Bushong .1 Sec 8

Tom Maki EE Spl 13
Joel Asher EQA 12

CADILLAC DISTRICT

Janis Denman Env Mgr 14

[Judie Weir .5 Sec 9]

Kurt Childs EQA 12 *
Rob Dickman EQA 12 (Stack Tests .5)
Shane Nixon EE 12
Al Retlewski EQA P11 **

GAYLORD OFFICE

William Rogers EQA 12
Gloria Torello EQA 12
Becky Radulski EE P11
Debra Noble Sec 9

GRAND RAPIDS DISTRICT

Heidi Hollenbach LT Env Mgr 15
[Multi Media Coordinator]

Kelly Orent Sec E9

Steve Lachance EQ Spl 13
Eric Grinstern EQS 13

Prudy Blue Env Mgr 13

Tracey McDonald EE 12 (Model .5)
Jenifer Dixon EQA 12
April Lazzaro EQA 12
David Morgan EQA 12
Cal Peters EQA 12
Denise Plafcan EQA 12

KALAMAZOO DISTRICT

Mary Douglas Env Mgr 14

Colleen Frens Sec 9

Dennis Dunlap EQ Spl 13
Rex Lane EQA 12
Dale Turton EE 12
Kirsten Clemens EE 12 (ERA Unit .5)
Dorothy Bohn EQA 12
Vacant EQA 12
Matt Deskins EQA P12 (Asbestos .5)

JACKSON DISTRICT

Scott Miller Env Mgr 14

MaryAnn Lagow Sec 9

Brian Carley EQ Spl 13
Diane Kavanaugh-Vetort EQA 12
Sersena White EE 12
Glen Erickson EQA 12
Ed Lancaster EQA 12
Vacant EQA 12
Vacant EE 12

LANSING DISTRICT

Michael McClellan Env Mgr 14

Teresa Gribi Sec 9

Robert Byrnes EE Spl 13
Joanne Foy EQ Spl 13
Brian Culham EQA 12 *
Brad Myott EE 12
Dan McGeen EQA P11 **
Vacant EE 12
Vacant EE P11*

SOUTHEAST MICHIGAN DISTRICT

Chris Ethridge Env Mgr 14

Vickie Lumb Sec 9
Jan St.Amour Sec E8

Usama Amer EE 12
Sebastian Kallumkal EE 12
Iranna Konanahalli EE 12
Francisco Lim EE 12
Rem Pinga EE 12
Joyce Zhu EE 12
Joseph Jaskowski EQA 12
Robert Elmouchi EQA P11
Erik Gurshaw EQA P11
Becky Loftus EQA 11
Krista Reed EQA P11
Mark Dziadosz EQA 11 (beg 5/7)

DETROIT DISTRICT

Mina McLemore Env Mgr 14

Cynthia McEvoy Sec 9

Jorge Acevedo EE 12
Gerald Krawiec EE 12
Stephen Weis EE 12
Jeffrey Korniski EE 12 *
Terseer Hemben EE P11 **
Katie Koster EE 12
Jill Placco EE P11 **
Jonathan Lamb EQA 12
Tom Maza EQA 12
Jim Voss EQA 12 (Asbestos)
Tammy Bell EQA P11 (Asbestos)
Nazaret Sandoval EE 11 (beg 5/27)
Todd Zynda EE 11 (beg 5/14)

* Lead Worker
** Lead Worker Subordinate
[] Position shared within DEQ

Attachment D1b - Michigan Title V Submittal Update - July 2012

Act No. 164
Public Acts of 2011
Approved by the Governor
October 4, 2011
Filed with the Secretary of State
October 4, 2011
EFFECTIVE DATE: October 4, 2011

STATE OF MICHIGAN 96TH LEGISLATURE REGULAR SESSION OF 2011

Introduced by Rep. Kowall

ENROLLED HOUSE BILL No. 4915

AN ACT to amend 1994 PA 451, entitled "An act to protect the environment and natural resources of the state; to codify, revise, consolidate, and classify laws relating to the environment and natural resources of the state; to regulate the discharge of certain substances into the environment; to regulate the use of certain lands, waters, and other natural resources of the state; to prescribe the powers and duties of certain state and local agencies and officials; to provide for certain charges, fees, assessments, and donations; to provide certain appropriations; to prescribe penalties and provide remedies; and to repeal acts and parts of acts," by amending section 5522 (MCL 324.5522), as amended by 2007 PA 75.

The People of the State of Michigan enact:

Sec. 5522. (1) Until October 1, 2015, the owner or operator of each fee-subject facility shall pay air quality fees as required and calculated under this section. The department may levy and collect an annual air quality fee from the owner or operator of each fee-subject facility in this state. The legislature intends that the fees required under this section meet the minimum requirements of the clean air act and that this expressly stated fee system serve as a limitation on the amount of fees imposed under this part on the owners or operators of fee-subject facilities in this state.

(2) The annual air quality fee shall be calculated for each fee-subject facility, according to the following procedure:

(a) Except as provided in subdivision (d), for category I facilities, the annual air quality fee shall be the sum of a facility charge of \$4,485.00 and an emissions charge as specified in subdivision (e) or (f).

(b) For category II facilities, the annual air quality fee shall be the sum of a facility charge of \$1,795.00 and an emissions charge as specified in subdivision (e) or (f).

(c) For category III facilities, the annual air quality fee shall be \$250.00.

(d) For municipal electric generating facilities that are category I facilities and that emit more than 730 tons but less than 12,000 tons of fee-subject air pollutants, the annual air quality fee shall be the following amount, based on the number of tons of fee-subject air pollutants emitted:

(i) More than 730 tons but less than 5,250 tons, \$37,000.00.

(ii) At least 5,250 tons but less than 12,000 tons, \$127,000.00.

(e) The emissions charge for category I facilities that are electric providers and that are not covered by subdivision (d) and for category II facilities that are electric providers shall equal the emission charge rate multiplied by the actual tons of fee-subject air pollutants emitted. The emission charge rate for fee-subject air pollutants shall be \$47.95. A pollutant that qualifies as a fee-subject air pollutant under more than 1 class shall be charged only once. The actual tons of fee-subject air pollutants emitted shall be considered to be the sum of all fee-subject air pollutants emitted at the fee-subject facility for the calendar year 2 years preceding the year of billing, but not more than the lesser of the following:

(i) 5,250 tons.

(ii) 1,250 tons per pollutant, if the sum of all fee-subject air pollutants except carbon monoxide emitted at the fee-subject facility is less than 5,250 tons.

(f) The emissions charge for category I or category II facilities that are not electric providers shall be calculated in the same manner as provided in subdivision (e). However, the actual tons of fee-subject air pollutants emitted shall be considered to be the sum of all fee-subject air pollutants emitted at a fee-subject facility for the calendar year 2 years preceding the year of billing, but not more than the lesser of the following:

(i) 4,000 tons.

(ii) 1,000 tons per pollutant, if the sum of all fee-subject air pollutants except carbon monoxide emitted at the fee-subject facility is less than 4,000 tons.

(3) After January 1, but before January 15 of each year, the department shall notify the owner or operator of each fee-subject facility of its assessed annual air quality fee. Payment is due within 90 calendar days of the mailing date of the air quality fee notification. If an assessed fee is challenged under subsection (5), payment is due within 90 calendar days of the mailing date of the air quality fee notification or within 30 days of receipt of a revised fee or statement supporting the original fee, whichever is later. However, to combine fee assessments, the department may adjust the billing date and due date under this subsection for category III dry cleaning facilities that are also subject to the licensing or certification requirements of section 13305 of the public health code, 1978 PA 368, MCL 333.13305, and section 5i of the fire prevention code, 1941 PA 207, MCL 29.5i. The department shall deposit all fees collected under this section to the credit of the fund.

(4) If the owner or operator of a fee-subject facility fails to submit the amount due within the time period specified in subsection (3), the department shall assess the owner or operator a penalty of 5% of the amount of the unpaid fee for each month that the payment is overdue up to a maximum penalty of 25% of the total fee owed. However, to combine fee assessments, the department may waive the penalty under this subsection for dry cleaning facilities described in subsection (3).

(5) To challenge its assessed fee, the owner or operator of a fee-subject facility shall submit the challenge in writing to the department. The department shall not process the challenge unless it is received by the department within 45 calendar days of the mailing date of the air quality fee notification described in subsection (3). A challenge shall identify the facility and state the grounds upon which the challenge is based. Within 30 calendar days of receipt of the challenge, the department shall determine the validity of the challenge and provide the owner with notification of a revised fee or a statement setting forth the reason or reasons why the fee was not revised. Payment of the challenged or revised fee is due within the time frame described in subsection (3). If the owner or operator of a facility desires to further challenge its assessed fee, the owner or operator of the facility has an opportunity for a contested case hearing as provided for under the administrative procedures act of 1969, 1969 PA 306, MCL 24.201 to 24.328.

(6) If requested by the department, by March 15 of each year, or within 45 days of a request by the department, whichever is later, the owner or operator of each fee-subject facility shall submit information regarding the facility's previous year's emissions to the department. The information shall be sufficient for the department to calculate the facility's emissions for that year and meet the requirements of 40 CFR 51.320 to 51.327.

(7) By July 1 of each year, the department shall provide the owner or operator of each fee-subject facility required to pay an emission charge pursuant to this section with a copy of the department's calculation of the facility emissions for the previous year. Within 60 days of this notification, the owner or operator of the facility may provide corrections to the department. The department shall make a final determination of the emissions by December 15 of that year. If the owner or operator disagrees with the determination of the department, the owner or operator may request a contested case hearing as provided for under the administrative procedures act of 1969, 1969 PA 306, MCL 24.201 to 24.328.

(8) By March 1 annually, the department shall prepare and submit to the governor, the legislature, the chairpersons of the standing committees of the senate and house of representatives with primary responsibility for environmental protection issues related to air quality, and the chairpersons of the subcommittees of the senate and house appropriations committees with primary responsibility for appropriations to the department a report that details the department's activities of the previous fiscal year funded by the fund. This report shall include, at a minimum, all of the following as it relates to the department:

(a) The number of full-time equated positions performing title V and non-title V air quality enforcement, compliance, or permitting activities.

(b) All of the following information related to the permit to install program authorized under section 5505:

(i) The number of permit to install applications received by the department.

(ii) The number of permit to install applications for which a final action was taken by the department. The number of final actions shall be reported as the number of applications approved, the number of applications denied, and the number of applications withdrawn by the applicant.

(iii) The number of permits to install approved that were required to complete public participation under section 5511(3) before final action and the number of permits to install approved that were not required to complete public participation under section 5511(3) prior to final action.

(iv) The average number of final permit actions per permit to install reviewer full-time equivalent position.

(v) The percentage and number of permit to install applications that were reviewed for administrative completeness within 10 days of receipt by the department.

(vi) The percentage and number of permit to install applications that were reviewed for technical completeness within 30 days of receipt of an administratively complete application by the department.

(vii) The percentage and number of permit to install applications submitted to the department that were administratively complete as received.

(viii) The percentage and number of permit to install applications for which a final action was taken by the department within 60 days of receipt of a technically complete application for those not required to complete public participation under section 5511(3) prior to final action, or within 120 days of receipt of a technically complete application for those which are required to complete public participation under section 5511(3) prior to final action.

(c) All of the following information for the renewable operating permit program authorized under section 5506:

(i) The number of renewable operating permit applications received by the department.

(ii) The number of renewable operating permit applications for which a final action was taken by the department. The number of final actions shall be reported as the number of applications approved, the number of applications denied, and the number of applications withdrawn by the applicant.

(iii) The percentage and number of permit applications initially processed within the required time.

(iv) The percentage and number of permit renewals and modifications processed within the required time.

(v) The number of permit applications reopened by the department.

(vi) The number of general permits issued by the department.

(d) The number of letters of violation sent.

(e) The amount of penalties collected from all consent orders and judgments.

(f) For each enforcement action that includes payment of a penalty, a description of what corrective actions were required by the enforcement action.

(g) The number of inspections done on sources required to obtain a permit under section 5506 and the number of inspections of other sources.

(h) The number of air pollution complaints received, investigated, not resolved, and resolved by the department.

(i) The number of contested case hearings and civil actions initiated and completed, and the number of voluntary consent orders, administrative penalty orders, and emergency orders entered or issued, for sources required to obtain a permit under section 5506.

(j) The amount of revenue in the fund at the end of the fiscal year.

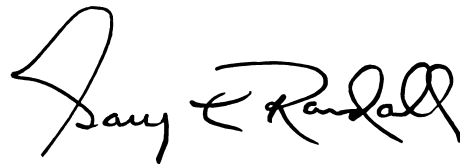
(9) The report under subsection (8) shall also include the amount of revenue for programs under this part received during the prior fiscal year from fees, from federal funds, and from general fund appropriations. Each of these amounts shall be expressed as a dollar amount and as a percent of the total annual cost of programs under this part.

(10) The attorney general may bring an action for the collection of the fees imposed under this section.

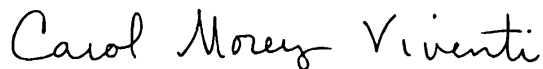
(11) This section does not apply if the administrator of the United States environmental protection agency determines that the department is not adequately administering or enforcing the renewable operating permit program and the administrator promulgates and administers a renewable operating permit program for this state.

(12) As used in this section, "electric provider" means that term as defined in section 5 of the clean, renewable, and efficient energy act, 2008 PA 295, MCL 460.1005.

This act is ordered to take immediate effect.



Clerk of the House of Representatives



Secretary of the Senate

Approved

.....
Governor

Attachment M1 - Michigan Title V Submittal Update - July 2012
Projected 2013 Michigan Fee Billing, Based on 2011 Emissions Data

SRN	Fee Category *	Source Name	City	Pb	HCL	NMOC	NOX	PM10	SO2	VOC	Total emissions of fee subject pollutants	Total billable emissions	Total emissions charge	Total facility charge	Total Fee **
B2796	EP	ST. CLAIR / BELLE RIVER POWER PLANT	SAINT CLAIR	0	678	238	17077	52	60493	241	79219	5250	\$251,737.50	\$4,485.00	\$256,222.50
B2816	EP	DETROIT EDISON/MONROE POWER	MONROE	0	2381	255	15217	344	49089	256	69668	5250	\$251,737.50	\$4,485.00	\$256,222.50
B2835	EP	J. H. Campbell Plant	WEST OLIVE	1	316		7052	166	26513	140	34186	5250	\$251,737.50	\$4,485.00	\$256,222.50
B2811	EP	DETROIT EDISON TRENTON CHANNEL	TRENTON	0	983		5208	94	22720	55	30043	5250	\$251,737.50	\$4,485.00	\$256,222.50
B2840	EP	Consumers Energy Karn-Weadock Facility	ESSEXVILLE	1	147	72	3998	550	19921	77	24693	5250	\$251,737.50	\$4,485.00	\$256,222.50
B2810	EP	DETROIT EDISON RIVER ROUGE	RIVER ROUGE	0	246	40	3465	24	10651	43	14675	5250	\$251,737.50	\$4,485.00	\$256,222.50
B4261	EP	WISCONSIN ELECTRIC POWER COMPANY	MARQUETTE	0	135	42	5056	47	7979	42	13259	5250	\$251,737.50	\$4,485.00	\$256,222.50
B2836	EP	B. C. Cobb Plant	MUSKEGON	0	63		2110	598	7205	25	10002	5250	\$251,737.50	\$4,485.00	\$256,222.50
B2846	EP	J.R. WHITING CO	ERIE	0	70		2301	757	5944	29	9101	5250	\$251,737.50	\$4,485.00	\$256,222.50
B1477	I	LAFARGE MIDWEST INC.	ALPENA	0	359		6907	607	10905	41	19178	4000	\$191,800.00	\$4,485.00	\$196,285.00
A7809	I	U S STEEL GREAT LAKES WORKS	ECORSE	0			2142	344	5604	233	8322	4000	\$191,800.00	\$4,485.00	\$196,285.00
B4885	I	TILDEN MINING COMPANY LC	ISHPEMING	0			5535	403	1036	117	7091	4000	\$191,800.00	\$4,485.00	\$196,285.00
A0884	I	ESCANABA PAPER COMPANY	ESCANABA	0	59	3	2553	396	2196	175	5380	4000	\$191,800.00	\$4,485.00	\$196,285.00
B1559	I	St. Marys Cement, Inc. (U.S.)	CHARLEVOIX	0	13		1996	438	1942	55	4445	4000	\$191,800.00	\$4,485.00	\$196,285.00
B1827	I	EMPIRE IRON MINING PARTNERSHIP	ISHPEMING	0			2799	259	1106	20	4184	4000	\$191,800.00	\$4,485.00	\$196,285.00
M4148	I	DETROIT RENEWABLE POWER, LLC	DETROIT	0		1	3951	17	213		4182	4000	\$191,800.00	\$4,485.00	\$196,285.00
B2647	MU	LBWL, Eckert & Moores Park Station	LANSING	0	799	29	2308	99	5345	29	8580		\$0.00	\$127,000.00	\$127,000.00
B2815	EP	Detroit Edison Harbor Beach Power Plant	HARBOR BEACH	0	70		632	8	1430	3	2213	2033	\$97,482.35	\$4,485.00	\$101,967.35
B1877	I	GUARDIAN INDUSTRIES	CARLETON				2042	318	552	56	2968	1926	\$92,351.70	\$4,485.00	\$96,836.70
B7192	I	VERSO PAPER - QUINNESEC	NORWAY	0			1181	185	423	299	2087	1907	\$91,440.65	\$4,485.00	\$95,925.65
N1685	EP	TES Filer City Station	FILER CITY	0		5	1180	75	591	5	1850	1851	\$88,755.45	\$4,485.00	\$93,240.45
B3692	I	Packaging Corporation of America Filer City Mill	FILER CITY	0	85	2	492	48	1021	219	1865	1844	\$88,419.80	\$4,485.00	\$92,904.80
A8640	I	SEVERSTAL DEARBORN, LLC	DEARBORN	0	17		634	367	758	40	1832	1833	\$87,892.35	\$4,485.00	\$92,377.35
K3249	I	Michigan State University	EAST LANSING	0		4	739	14	2108	12	2873	1765	\$84,631.75	\$4,485.00	\$89,116.75
B1824	I	Morton Salt	MANISTEE	0	97	1	185	63	1023	1	1467	1443	\$69,191.85	\$4,485.00	\$73,676.85
B6527	EP	Midland Cogeneration Venture	MIDLAND				1983	130	4	47	2164	1431	\$68,616.45	\$4,485.00	\$73,101.45
B3610	I	Pharmacia & Upjohn subsidiary of Pfizer	KALAMAZOO	0	43	1	285	39	963	18	1348	1348	\$64,636.60	\$4,485.00	\$69,121.60
A9831	I	MARATHON PETROLEUM COMPANY	DETROIT	0			411	80	96	679	1266	1266	\$60,704.70	\$4,485.00	\$65,189.70
B2169	I	CARMEUSE LIME, RIVER ROUGE OPERATION	RIVER ROUGE		21	3	547	65	608		1240	1241	\$59,505.95	\$4,485.00	\$63,990.95
B6420	I	E.B. EDDY PAPER INC.	PORT HURON	0	63	2	338	16	795	25	1237	1237	\$59,314.15	\$4,485.00	\$63,799.15
B1470	I	NEENAH PAPER - MICHIGAN INC	MUNISING	0	97	2	263	3	808	20	1191	1191	\$57,108.45	\$4,485.00	\$61,593.45
B1476	I	Decorative Panels International, Inc	ALPENA	0	76	1	366	66	628	54	1190	1190	\$57,060.50	\$4,485.00	\$61,545.50
A6475	I	MANISTIQUE PAPERS INC	MANISTIQUE	0	78	1	208	3	862	14	1165	1165	\$55,861.75	\$4,485.00	\$60,346.75
A3900	I	Martin Marietta Magnesia Specialties, LLC	MANISTEE				358	60	611	3	1032	1032	\$49,484.40	\$4,485.00	\$53,969.40
N5586	I	ANR Pipeline Lincoln Compressor Station	LAKE GEORGE				982	13	0	33	1028	1028	\$49,292.60	\$4,485.00	\$53,777.60
B2767	I	CHRYSLER WARREN TRUCK ASSEMBLY PLANT	WARREN	0			95	7	1	844	946	947	\$45,408.65	\$4,485.00	\$49,893.65
B7220	I	ANR Pipeline - Woolfolk Compressor Station	BIG RAPIDS				862	6	0	24	892	892	\$42,771.40	\$4,485.00	\$47,256.40

Attachment M1 - Michigan Title V Submittal Update - July 2012
Projected 2013 Michigan Fee Billing, Based on 2011 Emissions Data

SRN	Fee Category *	Source Name	City	Pb	HCL	NMOC	NOX	PM10	SO2	VOC	Total emissions of fee subject pollutants	Total billable emissions	Total emissions charge	Total facility charge	Total Fee **
N6631	EP	DEARBORN INDUSTRIAL GENERATION	DEARBORN	0			401	62	419	4	886	886	\$42,483.70	\$4,485.00	\$46,968.70
N3391	I	ROMEO GAS PROCESSING PLANT	WASHINGTON	0			832	6	0	45	882	883	\$42,339.85	\$4,485.00	\$46,824.85
N5581	I	Great Lakes Gas - Farwell Compressor Station 12	LAKE GEORGE				836	12	0	29	877	877	\$42,052.15	\$4,485.00	\$46,537.15
B1606	I	General Motors LLC Flint Assembly	FLINT	0			74	2	0	767	842	843	\$40,421.85	\$4,485.00	\$44,906.85
M4199	I	GENERAL MOTORS HAMTRAMCK	DETROIT	0	32	1	197	5	334	247	815	815	\$39,079.25	\$4,485.00	\$43,564.25
A8648	I	FORD MOTOR CO ROUGE COMPLEX	DEARBORN	0			51	21	0	731	804	803	\$38,503.85	\$4,485.00	\$42,988.85
A6175	I	Nexteer Automotive Corporation	SAGINAW	0	17	1	193	51	428	22	711	711	\$34,092.45	\$4,485.00	\$38,577.45
B1976	MU	J.B. Sims Generating Station	GRAND HAVEN	0		5	360	36	286	5	688	688	\$32,989.60	\$4,485.00	\$37,474.60
B1833	MU	MARQUETTE BOARD OF LIGHT & POWER	MARQUETTE	0		6	311	0	365	6	682	682	\$32,701.90	\$4,485.00	\$37,186.90
A6240	I	CARGILL SALT INC.	SAINT CLAIR	0	39	1	165	144	330	1	680	679	\$32,558.05	\$4,485.00	\$37,043.05
B4001	MU	LBWL, Erickson Station	LANSING	0	285	15	1257	4	2915	15	4476		\$0.00	\$37,000.00	\$37,000.00
B2357	MU	Holland BPW, Generating Station & WWTP	HOLLAND	0	59	710	1118	42	1823	5	3106		\$0.00	\$37,000.00	\$37,000.00
B1573	MU	ESCANABA POWER PLANT	ESCANABA	0	60	1	205	3	993	1	1261		\$0.00	\$37,000.00	\$37,000.00
B6611	MU	MI SO CENTRAL POWER AGENCY	LITCHFIELD	0		4	393	3	838	4	1238		\$0.00	\$37,000.00	\$37,000.00
B2132	MU	WYANDOTTE DEPT MUNI POWER PLANT	WYANDOTTE	0	85		336	7	765	4	1197		\$0.00	\$37,000.00	\$37,000.00
N5573	I	CONSUMERS ENERGY - WHITE PIGEON	WHITE PIGEON	0			614	8	0	36	658	658	\$31,551.10	\$4,485.00	\$36,036.10
N5575	I	ANR Pipeline - Bridgman Compressor Station	BRIDGMAN				592	15	0	38	645	645	\$30,927.75	\$4,485.00	\$35,412.75
B4260	EP	L'ANSE WARDEN ELECTRIC COMPANY	LANSE	0			259	36	343	5	643	643	\$30,831.85	\$4,485.00	\$35,316.85
N2155	I	CHRYSLER JEFFERSON NORTH ASSEMBLY	DETROIT	0			67	22	0	499	588	588	\$28,194.60	\$4,485.00	\$32,679.60
A4033	I	The Dow Chemical Company U.S.A., Midland	MIDLAND	0			226	40	14	285	564	565	\$27,091.75	\$4,485.00	\$31,576.75
B2875	I	Michigan Sugar Co. - Caro Factory	CARO	0		1	148	55	356	1	561	560	\$26,852.00	\$4,485.00	\$31,337.00
B2873	I	Michigan Sugar Co.- Sebewaing Factory	SEBEWAING	0		1	141	38	342	2	523	523	\$25,077.85	\$4,485.00	\$29,562.85
B1991	I	GM POWERTRAIN - SAGINAW METAL CASTING	SAGINAW	0			61	123	0	334	518	518	\$24,838.10	\$4,485.00	\$29,323.10
N5572	I	Howell Compressor Station	HOWELL				499	0	0	10	509	509	\$24,406.55	\$4,485.00	\$28,891.55
B6478	I	BELLE RIVER COMPRESSOR STATION	E CHINA TWP				448	10	0	44	501	502	\$24,070.90	\$4,485.00	\$28,555.90
N1160	EP	Viking Energy of McBain	MCBAIN	0			229	46	226	0	501	501	\$24,022.95	\$4,485.00	\$28,507.95
N2901	I	Consumers Energy Muskegon River Compressor	CHURCH BRIDGE				468	6	0	18	492	492	\$23,591.40	\$4,485.00	\$28,076.40
A8650	I	FORD MOTOR CO/ WAYNE COMPLEX	WAYNE	0			63	30	2	363	459	458	\$21,961.10	\$4,485.00	\$26,446.10
B1855	I	CLEARWATER PAPER - MENOMINEE	MENOMINEE	0	41		99	1	308	7	457	456	\$21,865.20	\$4,485.00	\$26,350.20
N0929	I	AUTOALLIANCE INTL	FLAT ROCK				50	4	0	395	449	449	\$21,529.55	\$4,485.00	\$26,014.55
N3392	I	TAGGART COMPRESSOR STATION	SIX LAKES				433	3	0	9	444	445	\$21,337.75	\$4,485.00	\$25,822.75
B7248	I	Chrysler Sterling Heights Assemebly plant	STERLING HTS	0			61	5	0	366	432	432	\$20,714.40	\$4,485.00	\$25,199.40
N0890	EP	Viking Energy of Lincoln, LLC	LINCOLN	0			193	37	193	1	424	424	\$20,330.80	\$4,485.00	\$24,815.80
A6220	I	Intertape Polymer Group	MARYSVILLE				4	1	0	416	420	421	\$20,186.95	\$4,485.00	\$24,671.95
B6637	I	ST. CLAIR COMPRESSOR STATION	IRA TWP				393	0	0	14	407	407	\$19,515.65	\$4,485.00	\$24,000.65
N1266	EP	HILLMAN POWER CO	HILLMAN	0			229	18	135	5	386	387	\$18,556.65	\$4,485.00	\$23,041.65
B2876	I	Michigan Sugar Company, Crosswell Factory	CROSWELL	0			103	39	243	1	386	386	\$18,508.70	\$4,485.00	\$22,993.70

Attachment M1 - Michigan Title V Submittal Update - July 2012
Projected 2013 Michigan Fee Billing, Based on 2011 Emissions Data

SRN	Fee Category *	Source Name	City	Pb	HCL	NMOC	NOX	PM10	SO2	VOC	Total emissions of fee subject pollutants	Total billable emissions	Total emissions charge	Total facility charge	Total Fee **
N6950	I	General Motors - Lansing Delta Township	LANSING	0			34	4	0	344	383	382	\$18,316.90	\$4,485.00	\$22,801.90
N1604	I	Kent County Waste to Energy Facility	GRAND RAPIDS	0		1	329	3	20		352	353	\$16,926.35	\$4,485.00	\$21,411.35
B2103	I	DETROIT WASTEWATER TREATMENT PLANT	DETROIT	1			246	4	49	49	348	348	\$16,686.60	\$4,485.00	\$21,171.60
N5792	I	Overisel Compressor Station	HAMILTON				319	7	0	20	346	346	\$16,590.70	\$4,485.00	\$21,075.70
M0675	I	UNIVERSITY OF MICHIGAN	ANN ARBOR	0			295	15	9	15	334	334	\$16,015.30	\$4,485.00	\$20,500.30
N1395	EP	Cadillac Renewable Energy Facility	CADILLAC	0			219	30	75	8	331	332	\$15,919.40	\$4,485.00	\$20,404.40
N7362	I	GRAYMONT WESTERN LIME INC	GULLIVER				274	36	20		331	330	\$15,823.50	\$4,485.00	\$20,308.50
N2688	I	ARBOR HILLS LANDFILL	NORTHVILLE			81	108	91	30		310	310	\$14,864.50	\$4,485.00	\$19,349.50
N6626	EP	Jackson Power Company, LLC	JACKSON				294	5	3	0	302	302	\$14,480.90	\$4,485.00	\$18,965.90
N2940	I	DCP Antrim Gas LLC	JOHANNESBURG				256	9	5	26	296	296	\$14,193.20	\$4,485.00	\$18,678.20
B6145	EP	DETROIT EDISON GREENWOOD ENERGY CENTER	AVOCA	0			217	19	41	12	289	289	\$13,857.55	\$4,485.00	\$18,342.55
N2388	EP	GRAYLING GENERATING STATION LTD PTNR	GRAYLING	0			246	15	16	5	282	282	\$13,521.90	\$4,485.00	\$18,006.90
M4449	I	WOODLAND MEADOWS RDF	WAYNE			176	30	64	11		281	281	\$13,473.95	\$4,485.00	\$17,958.95
N0677	I	Steelcase Inc.- Kentwood Complex	KENTWOOD	0			110	13	142	16	281	281	\$13,473.95	\$4,485.00	\$17,958.95
M1891	II	Lafarge, Presque Isle Quarry	PRESQUE ISLE					326		0	327	326	\$15,631.70	\$1,795.00	\$17,426.70
N3920	I	FREEDOM COMPRESSOR STATION	MANCHESTER				245	4	0	9	258	258	\$12,371.10	\$4,485.00	\$16,856.10
N3760	I	GREAT LAKES GAS TRANSMISSION STATION #8	CRYSTAL FALLS				246	4	2	1	254	253	\$12,131.35	\$4,485.00	\$16,616.35
B4032	I	General Motors LLC - Pontiac North Campus	PONTIAC	0			140	9	7	96	253	252	\$12,083.40	\$4,485.00	\$16,568.40
N5574	I	ANR Pipeline - Hamilton Compressor Station	HAMILTON				243	3	1	1	249	248	\$11,891.60	\$4,485.00	\$16,376.60
A0767	I	East Jordan Iron Works	EAST JORDAN	0			15	73	2	143	233	233	\$11,172.35	\$4,485.00	\$15,657.35
B7061	I	Gerdau MacSteel Monroe	MONROE	0			153	22	23	29	228	227	\$10,884.65	\$4,485.00	\$15,369.65
N1315	I	LOUISIANA-PACIFIC CORP SAGOLA PLANT	SAGOLA	0			142	46	9	19	216	216	\$10,357.20	\$4,485.00	\$14,842.20
N3294	I	Ottawa County Farms Landfill	COOPERSVILLE			85	102	24	5		215	216	\$10,357.20	\$4,485.00	\$14,842.20
N5986	I	CARLETON FARMS LANDFILL	NEW BOSTON			55	109	28	20		212	212	\$10,165.40	\$4,485.00	\$14,650.40
N4975	EP	Michigan Power Limited Partnership	LUDINGTON	0			197	12	1	1	211	211	\$10,117.45	\$4,485.00	\$14,602.45
A1991	I	Kalsec, Incorporated	KALAMAZOO	0			2	1	0	206	209	209	\$10,021.55	\$4,485.00	\$14,506.55
B7302	I	WEYERHAEUSER NR COMPANY	GRAYLING				48	37	4	116	206	205	\$9,829.75	\$4,485.00	\$14,314.75
N8004	EP	SUMPTER ENERGY ASSOCIATES	LENOX TWP				134	8	41	20	204	203	\$9,733.85	\$4,485.00	\$14,218.85
B3721	I	ANR Pipeline - Reed City Compressor Station	REED CITY				191	3	0	9	203	203	\$9,733.85	\$4,485.00	\$14,218.85
N5997	I	Granger Wood Street Landfill	LANSING			73	113	10	5		202	201	\$9,637.95	\$4,485.00	\$14,122.95
N3570	EP	GENESEE POWER STATION LTD PARTNERSHIP	FLINT	0			178	0	8	15	200	201	\$9,637.95	\$4,485.00	\$14,122.95
B1493	I	Michigan Sugar Company - Bay City	BAY CITY	0			109	54	26	5	194	194	\$9,302.30	\$4,485.00	\$13,787.30
B1534	I	GRAPHIC PACKAGING INTERNATIONAL	BATTLE CREEK	0			170	4	0	17	192	191	\$9,158.45	\$4,485.00	\$13,643.45
N1436	I	Chrysler Technology Center	AUBURN HILLS	0			135	13	9	32	189	189	\$9,062.55	\$4,485.00	\$13,547.55
K2460	I	Central Michigan University	MOUNT PLEASNT	0			108	66	4	4	182	182	\$8,726.90	\$4,485.00	\$13,211.90
B1678	I	GRAPHIC PACKAGING INTERNATIONAL	KALAMAZOO	0			110	9	1	58	177	178	\$8,535.10	\$4,485.00	\$13,020.10
N5991	I	Citizens Disposal, Inc.	GRAND BLANC			64	98	9	7		177	178	\$8,535.10	\$4,485.00	\$13,020.10

Attachment M1 - Michigan Title V Submittal Update - July 2012
Projected 2013 Michigan Fee Billing, Based on 2011 Emissions Data

SRN	Fee Category *	Source Name	City	Pb	HCL	NMOC	NOX	PM10	SO2	VOC	Total emissions of fee subject pollutants	Total billable emissions	Total emissions charge	Total facility charge	Total Fee **
N5984	I	PINE TREE ACRES, INC.	LENOX			65	47	21	43		177	176	\$8,439.20	\$4,485.00	\$12,924.20
B7198	I	ANR-Coldsprings/ Blue Lake Gas Storage	MANCELONA				156	2	0	15	173	173	\$8,295.35	\$4,485.00	\$12,780.35
N5940	I	POTLATCH LAND & LUMBER LLC.	GWINN	0				35		137	172	172	\$8,247.40	\$4,485.00	\$12,732.40
N5957	I	Aleris International, Inc.	COLDWATER	0			43	71	15	41	170	170	\$8,151.50	\$4,485.00	\$12,636.50
B1548	I	Post Foods	BATTLE CREEK	0			59	78	0	33	170	170	\$8,151.50	\$4,485.00	\$12,636.50
N6521	EP	Zeeland Generating Station	ZEELAND				134	24	4	7	170	169	\$8,103.55	\$4,485.00	\$12,588.55
N5910	I	Venice Park RDF	LENNON			43	104	15	7		170	169	\$8,103.55	\$4,485.00	\$12,588.55
A1641	I	General Motors Lansing Grand River Assembly	LANSING				16	1	0	152	169	169	\$8,103.55	\$4,485.00	\$12,588.55
A6497	I	Hanson Brick - Michigan Plant	CORUNNA	0			8	8	150	1	166	167	\$8,007.65	\$4,485.00	\$12,492.65
B7205	I	GUARDIAN FIBERGLASS INC	ALBION	0			8	82	5	72	166	167	\$8,007.65	\$4,485.00	\$12,492.65
B7221	I	MILFORD COMPRESSOR STATION	MILFORD	0			166	0	0	0	167	166	\$7,959.70	\$4,485.00	\$12,444.70
N1794	I	Atlas EPS, a Division of Atlas Roofing Corp.	BYRON CENTER	0			0	1	0	162	163	163	\$7,815.85	\$4,485.00	\$12,300.85
B4306	I	Gerdau Special Steel NA - Jackson Mill	JACKSON	0			103	9	32	11	155	155	\$7,432.25	\$4,485.00	\$11,917.25
N6009	II	SAUK TRAIL HILLS DEVELOPMENT	CANTON TWP			43	80	34	54		211	211	\$10,117.45	\$1,795.00	\$11,912.45
N1784	EP	ADA COGENERATION LIMITED PARTNERSHIP	ADA	0			149	2	1	1	153	153	\$7,336.35	\$4,485.00	\$11,821.35
B6230	I	FORD MOTOR CO RESEARCH & DEV CTR	DEARBORN				80	6	5	62	153	153	\$7,336.35	\$4,485.00	\$11,821.35
N3818	I	Great Lakes Gas Transmission Station #13	OTISVILLE				141	4	2	2	148	149	\$7,144.55	\$4,485.00	\$11,629.55
N5831	I	Breitburn Energy Wilderness/Hayes 29	HAYES TWP				122	1	0	24	147	147	\$7,048.65	\$4,485.00	\$11,533.65
B1846	I	Occidental Chemical Corporation	LUDINGTON				55	55	0	37	147	147	\$7,048.65	\$4,485.00	\$11,533.65
B6013	I	MERIT ENERGY CO. - Manistee Sulfur Plant	MANISTEE				115	1	0	28	145	144	\$6,904.80	\$4,485.00	\$11,389.80
D8065	I	Dart Container Corporation of Michigan	MASON	0			11	1	0	132	143	144	\$6,904.80	\$4,485.00	\$11,389.80
N5432	I	Southeast Berrien County Landfill Authority	BUCHANAN			103	31	6	2		142	142	\$6,808.90	\$4,485.00	\$11,293.90
B1909	I	CWC Textron	MUSKEGON	0			17	88	1	33	139	139	\$6,665.05	\$4,485.00	\$11,150.05
M4204	I	Zeeland Farm Soya	ZEELAND				8	17	0	113	138	138	\$6,617.10	\$4,485.00	\$11,102.10
B2814	EP	DETROIT THERMAL BEACON HEATING	DETROIT	0			126	5	0	4	136	135	\$6,473.25	\$4,485.00	\$10,958.25
B7227	I	GENERAL MOTORS - ORION ASSEMBLY	LAKE ORION	0			65	2	0	68	136	135	\$6,473.25	\$4,485.00	\$10,958.25
N3758	I	GREAT LAKES GAS TRANSMISSION STATION #10	NAUBINWAY				128	4	2	1	135	135	\$6,473.25	\$4,485.00	\$10,958.25
N7707	I	Shelby Foam Systems Div of Magna Seating	SHELBY TWP							135	135	135	\$6,473.25	\$4,485.00	\$10,958.25
M4469	I	RIVERVIEW LAND PRESERVE	RIVERVIEW			44	49	28	12		132	133	\$6,377.35	\$4,485.00	\$10,862.35
B7197	I	ANR -- Rapid River Compressor Station	KALKASKA				125	1	0	6	132	132	\$6,329.40	\$4,485.00	\$10,814.40
N6767	EP	New Covert Generating Company, LLC	COVERT	0			51	67	4	8	131	130	\$6,233.50	\$4,485.00	\$10,718.50
N1328	I	Rec Boat Holdings LLC - Cruiser Plant	CADILLAC							130	130	130	\$6,233.50	\$4,485.00	\$10,718.50
N6996	I	POET BIOREFINING- CARO	CARO	0			68	8	1	53	129	130	\$6,233.50	\$4,485.00	\$10,718.50
N5056	I	Magna Mirrors Corporation - Newaygo	NEWAYGO	0			3	0	0	121	124	124	\$5,945.80	\$4,485.00	\$10,430.80
B6636	I	Ray Compressor Station	ARMADA	0			99	5	0	17	121	121	\$5,801.95	\$4,485.00	\$10,286.95
B4072	I	Rock-Tenn Co	BATTLE CREEK	0			88	3	0	27	119	118	\$5,658.10	\$4,485.00	\$10,143.10
N1192	I	DENSO Manufacturing Michigan, Inc.	BATTLE CREEK	0			10	3	0	105	118	118	\$5,658.10	\$4,485.00	\$10,143.10

Attachment M1 - Michigan Title V Submittal Update - July 2012
Projected 2013 Michigan Fee Billing, Based on 2011 Emissions Data

SRN	Fee Category *	Source Name	City	Pb	HCL	NMOC	NOX	PM10	SO2	VOC	Total emissions of fee subject pollutants	Total billable emissions	Total emissions charge	Total facility charge	Total Fee **
N7463	I	BREITBURN OPERATING ELMER FUDD EAST	COMINS				106	0	0	11	117	117	\$5,610.15	\$4,485.00	\$10,095.15
M4764	EP	FORD MOTOR ELM STREET BOILERHOUSE	DEARBORN	0			100	5	0	3	109	108	\$5,178.60	\$4,485.00	\$9,663.60
N5996	I	Granger Grand River Avenue Landfill	GRAND LEDGE			37	64	3	3		108	107	\$5,130.65	\$4,485.00	\$9,615.65
B7711	I	SHERWIN-WILLIAMS COMPANY	HOLLAND				0	0	0	105	105	105	\$5,034.75	\$4,485.00	\$9,519.75
N7578	I	EAGLE INDUSTRIES INC	WIXOM							105	105	105	\$5,034.75	\$4,485.00	\$9,519.75
N1125	I	JACKSON CNTY RESOURCE RECOVERY FACILITY	JACKSON			1	84	1	18		103	104	\$4,986.80	\$4,485.00	\$9,471.80
B6480	I	COLUMBUS COMPRESSOR STATION	RICHMOND				101	0	0	2	103	103	\$4,938.85	\$4,485.00	\$9,423.85
B2329	I	JHP PHARMACEUTICALS LLC	ROCHESTER	0			94	1	1	7	103	103	\$4,938.85	\$4,485.00	\$9,423.85
B2644	I	Hemlock Semiconductor Corporation	HEMLOCK	0			84	9	1	7	101	101	\$4,842.95	\$4,485.00	\$9,327.95
B2178	I	Cadillac Casting, Inc	CADILLAC	0			19	15	0	65	100	99	\$4,747.05	\$4,485.00	\$9,232.05
N7238	I	Polytech Moulding Industries Inc.	WYANDOTTE					3		95	98	98	\$4,699.10	\$4,485.00	\$9,184.10
N6944	I	Michigan Foam & Fabrication, LLC.	MARYSVILLE							98	98	98	\$4,699.10	\$4,485.00	\$9,184.10
G5067	I	WILLIAM BEAUMONT HOSPITAL	ROYAL OAK	0			82	4	0	10	97	96	\$4,603.20	\$4,485.00	\$9,088.20
A2402	I	ACCESS BUSINESS GROUP, LLC	ADA	0			5	2	0	89	96	96	\$4,603.20	\$4,485.00	\$9,088.20
B4049	I	GM Technical Center	WARREN	0			74	5	0	15	95	94	\$4,507.30	\$4,485.00	\$8,992.30
N5987	I	Brent Run Landfill	MONTROSE			46	39	6	3		93	94	\$4,507.30	\$4,485.00	\$8,992.30
A8638	I	DETROIT DIESEL CORPORATION	DETROIT	0			63	3	7	19	93	92	\$4,411.40	\$4,485.00	\$8,896.40
N0879	I	Morgan Olson, LLC	STURGIS				0	0	0	90	91	90	\$4,315.50	\$4,485.00	\$8,800.50
B2838	EP	Veolia Energy Grand Rapids, LLC	GRAND RAPIDS	0			85	3	0	2	91	90	\$4,315.50	\$4,485.00	\$8,800.50
N2407	I	Forest Lawn Landfill	THREE OAKS			35	31	16	8		89	90	\$4,315.50	\$4,485.00	\$8,800.50
B2043	I	Metavation Vassar, LLC	VASSAR	0			13	29	10	37	89	89	\$4,267.55	\$4,485.00	\$8,752.55
N5578	I	ANR Pipeline Winfield Compressor Station	HOWARD CITY				86	0	0	2	89	88	\$4,219.60	\$4,485.00	\$8,704.60
B7222	I	JAGUAR ENERGY FREDERIC 15 GAS PLANT	FREDERIC				6	0	81	1	87	88	\$4,219.60	\$4,485.00	\$8,704.60
N7221	I	R L Adams Plastics, Inc.	WYOMING					0		87	87	87	\$4,171.65	\$4,485.00	\$8,656.65
B1966	EP	WHITE PINE ELECTRIC POWER LLC	WHITE PINE	0	12		28	3	44	0	87	87	\$4,171.65	\$4,485.00	\$8,656.65
H5877	I	EASTERN MI UNIVERSITY	YPSILANTI	0			80	3	1	1	84	85	\$4,075.75	\$4,485.00	\$8,560.75
N1324	I	South Kent Landfill	BYRON CENTER			35	42	5	2		85	84	\$4,027.80	\$4,485.00	\$8,512.80
A5764	I	Ventra Evart, LLC	EVART				11		0	72	84	83	\$3,979.85	\$4,485.00	\$8,464.85
A3934	I	Great Lakes Castings LLC	LUDINGTON	0			14	33	0	36	84	83	\$3,979.85	\$4,485.00	\$8,464.85
N1652	II	Whiting Petroleum West Branch Gas Plant	WEST BRANCH				76	1	0	62	138	139	\$6,665.05	\$1,795.00	\$8,460.05
B1577	I	GREDE LLC - IRON MOUNTAIN	KINGSFORD	0			6	12	5	52	75	75	\$3,596.25	\$4,485.00	\$8,081.25
M4734	I	FORD MOTOR AUTO TRANSMISSION NEW PRODUCT	LIVONIA				44	3	2	25	75	74	\$3,548.30	\$4,485.00	\$8,033.30
A0023	I	OTSEGO PAPER INC	OTSEGO	0			51	2	0	20	74	73	\$3,500.35	\$4,485.00	\$7,985.35
B1792	I	Warren Waste Water Treatment Plant	WARREN	0			17	1	2	53	73	73	\$3,500.35	\$4,485.00	\$7,985.35
N6526	EP	CMS Generation Livingston Generating Station	GAYLORD				67	2	0	1	70	70	\$3,356.50	\$4,485.00	\$7,841.50
A8645	I	FORD MOTOR CO/ LIVONIA TRANSMISSION	LIVONIA	0			31	9	0	28	68	68	\$3,260.60	\$4,485.00	\$7,745.60
B5854	I	Romeo RIM, Inc.	ROMEO							68	68	68	\$3,260.60	\$4,485.00	\$7,745.60

Attachment M1 - Michigan Title V Submittal Update - July 2012
Projected 2013 Michigan Fee Billing, Based on 2011 Emissions Data

SRN	Fee Category *	Source Name	City	Pb	HCL	NMOC	NOX	PM10	SO2	VOC	Total emissions of fee subject pollutants	Total billable emissions	Total emissions charge	Total facility charge	Total Fee **
B4942	I	DOW AGROSCIENCES LLC	HARBOR BEACH	0			45	3	0	19	68	67	\$3,212.65	\$4,485.00	\$7,697.65
N6873	EP	Renaissance Power LLC	CARSON CITY				54	6	1	6	67	67	\$3,212.65	\$4,485.00	\$7,697.65
B2869	I	FORD MOTOR - ROMEO ENGINE PLANT	ROMEO				12	8	0	46	66	66	\$3,164.70	\$4,485.00	\$7,649.70
B7390	I	ANR Pipeline Central Charlton Compressor Station	JOHANNESBURG				58	2	0	6	66	66	\$3,164.70	\$4,485.00	\$7,649.70
N0802	I	ALBAR INDUSTRIES, INC.	LAPEER				2		0	64	66	66	\$3,164.70	\$4,485.00	\$7,649.70
B7219	I	ANR Pipeline S Chester Compressor Station	JOHANNESBURG				56	2	0	6	64	64	\$3,068.80	\$4,485.00	\$7,553.80
B2063	I	Automotive Components Holdings - Saline	SALINE	0			14	1	0	49	64	64	\$3,068.80	\$4,485.00	\$7,553.80
M2363	I	MARATHON PIPELINE CO	WOODHAVEN				0			64	64	64	\$3,068.80	\$4,485.00	\$7,553.80
K2131	I	Western Michigan University	KALAMAZOO	0			54	4	2	3	63	63	\$3,020.85	\$4,485.00	\$7,505.85
N2079	I	Lacks Industries, Inc.	KENTWOOD				10	1	0	51	62	62	\$2,972.90	\$4,485.00	\$7,457.90
A3569	I	DuPont Mt Clemens Plant	MOUNT CLEMENS	0			3	0	0	59	62	62	\$2,972.90	\$4,485.00	\$7,457.90
N5397	I	Peoples Landfill, Inc.	BIRCH RUN			27	24	5	3		59	59	\$2,829.05	\$4,485.00	\$7,314.05
A6380	I	ABBOTT NUTRITION	STURGIS	0			19	17	20	2	59	58	\$2,781.10	\$4,485.00	\$7,266.10
N7413	I	VENTRA FOWLerville LLC	FOWLerville				4	0	0	53	57	57	\$2,733.15	\$4,485.00	\$7,218.15
N7383	II	Green Plains Holdings II LLC	RIGA	0			71	19	1	20	111	111	\$5,322.45	\$1,795.00	\$7,117.45
N7624	I	VECTOR PIPELINE L.P.	WASHINGTON				47	4	2	1	55	54	\$2,589.30	\$4,485.00	\$7,074.30
B8337	I	MUTTONVILLE COMPRESSOR STATION	MUTTONVILLE				50	1	0	2	54	53	\$2,541.35	\$4,485.00	\$7,026.35
N5814	I	ASAMA COLDWATER MANUFACTURING	COLDWATER	0			0	8	1	44	53	53	\$2,541.35	\$4,485.00	\$7,026.35
N2369	I	ADRIAN LANDFILL	ADRIAN			15	28	8	2		53	53	\$2,541.35	\$4,485.00	\$7,026.35
B2014	I	Day International, Inc. a Flint Group Company	THREE RIVERS	0			4	0	0	48	52	52	\$2,493.40	\$4,485.00	\$6,978.40
B1754	I	ERVIN AMASTEEL DIVISION	ADRIAN				23	3	10	15	51	51	\$2,445.45	\$4,485.00	\$6,930.45
B7093	I	Aztec Producing Company, Inc.	MANISTEE				14	0	32	5	51	51	\$2,445.45	\$4,485.00	\$6,930.45
N7412	II	Carbon Green Bioenergy	WOODBURY				52	5	25	24	105	106	\$5,082.70	\$1,795.00	\$6,877.70
M4782	I	EQ-Belleville	BELLEVILLE	0		4	32	12	1		50	49	\$2,349.55	\$4,485.00	\$6,834.55
A5937	I	Howard Miller Company	ZEELAND	0				1		48	49	49	\$2,349.55	\$4,485.00	\$6,834.55
N2954	I	Mosaic Potash Hersey LLC	HERSEY	0			24	15	7	2	48	48	\$2,301.60	\$4,485.00	\$6,786.60
N2168	I	GREAT LAKES GAS TRANSMISSION #7	WAKEFIELD				46	1	0	0	47	47	\$2,253.65	\$4,485.00	\$6,738.65
N6838	I	Vector Pipeline Highland Compressor Station	HIGHLAND				39	5	1	2	46	47	\$2,253.65	\$4,485.00	\$6,738.65
N0780	I	LOUISIANA-PACIFIC NEWBERRY PLANT	NEWBERRY	0			24	8	2	12	46	46	\$2,205.70	\$4,485.00	\$6,690.70
B6027	I	Inteva Products Adrian Operations	ADRIAN	0			6	0	0	39	45	45	\$2,157.75	\$4,485.00	\$6,642.75
B7196	I	ANR Storage - Excelsior Compressor Station	KALKASKA				41	0	0	4	45	45	\$2,157.75	\$4,485.00	\$6,642.75
N5955	I	LOTUS ENGINEERING INC	ANN ARBOR				40	1	0	3	45	44	\$2,109.80	\$4,485.00	\$6,594.80
B7186	I	Haworth Inc	HOLLAND					1		41	42	42	\$2,013.90	\$4,485.00	\$6,498.90
B8573	I	Great Lakes Gas Trans Station #11	BOYNE FALLS				40	1	1	0	42	42	\$2,013.90	\$4,485.00	\$6,498.90
B2024	I	White Pigeon Paper Company	WHITE PIGEON	0			14	2	0	26	41	42	\$2,013.90	\$4,485.00	\$6,498.90
A3567	II	Ford Motor Company - Sterling Plant	STERLING HTS	0			57	14	0	26	97	97	\$4,651.15	\$1,795.00	\$6,446.15
N2896	I	C&C Expanded Sanitary Landfill	MARSHALL			21	0	15	4		40	40	\$1,918.00	\$4,485.00	\$6,403.00

Attachment M1 - Michigan Title V Submittal Update - July 2012
Projected 2013 Michigan Fee Billing, Based on 2011 Emissions Data

SRN	Fee Category *	Source Name	City	Pb	HCL	NMOC	NOX	PM10	SO2	VOC	Total emissions of fee subject pollutants	Total billable emissions	Total emissions charge	Total facility charge	Total Fee **
B9073	I	Marathon Petroleum Company LP - NILES	NILES							40	40	40	\$1,918.00	\$4,485.00	\$6,403.00
A9365	I	Avon Automotive Cadillac Division	CADILLAC					1		38	40	39	\$1,870.05	\$4,485.00	\$6,355.05
B1798	I	WARREN POWERTRAIN	WARREN	0			34	1	0	3	40	38	\$1,822.10	\$4,485.00	\$6,307.10
B8786	I	Sekisui Voltek LLC.	COLDWATER				32	1	4	1	37	38	\$1,822.10	\$4,485.00	\$6,307.10
B4292	I	MERIT ENERGY - KALKASKA GAS PLANT	KALKASKA				15	2	2	18	37	37	\$1,774.15	\$4,485.00	\$6,259.15
B2247	I	BUCKEYE TERMINALS-DETROIT TERMINAL	DETROIT							36	36	36	\$1,726.20	\$4,485.00	\$6,211.20
N7762	I	RICHFIELD LANDFILL INC	DAVISON			30	1	5	0		36	36	\$1,726.20	\$4,485.00	\$6,211.20
B2052	I	RACER Trust Willow Run Industrial Land	YPSILANTI	0			32	2	0	1	34	35	\$1,678.25	\$4,485.00	\$6,163.25
N6327	I	FEDERAL- MOGUL POWERTRAIN, INC.	PLYMOUTH				25	2	2	3	33	32	\$1,534.40	\$4,485.00	\$6,019.40
P0222	I	GAS RECOVERY SYSTEMS LLC	MARSHALL				13	4	15	0	32	32	\$1,534.40	\$4,485.00	\$6,019.40
B2337	I	VCF Films, Inc.	HOWELL	0			0	0	0	32	32	32	\$1,534.40	\$4,485.00	\$6,019.40
A5858	II	Mead Johnson & Company, LLC	ZEELAND	0			20	49	0	19	89	88	\$4,219.60	\$1,795.00	\$6,014.60
M4510	I	CITY SAND & LANDFILL INC	SUMPTER TWP			14	15	1	1		31	31	\$1,486.45	\$4,485.00	\$5,971.45
B2015	I	Metal Technologies Three Rivers Gray Iron	THREE RIVERS	0			0	19		12	30	31	\$1,486.45	\$4,485.00	\$5,971.45
N3341	I	MICH CON GAS KALKASKA COMPRESSOR	KALKASKA				17	3	0	10	30	30	\$1,438.50	\$4,485.00	\$5,923.50
B2926	I	Sunoco Partners M & T River Rouge Terminal	DETROIT	0			0	0	0	30	30	30	\$1,438.50	\$4,485.00	\$5,923.50
N7493	II	MARYSVILLE ETHANOL, LLC	MARYSVILLE	0			36	11	3	35	85	85	\$4,075.75	\$1,795.00	\$5,870.75
B4359	I	BASF CORP	WYANDOTTE	0			5	11	0	11	27	27	\$1,294.65	\$4,485.00	\$5,779.65
B2802	EP	Detroit Edison Oliver Peaking Station	OLIVER TWP				25	0	0	1	26	26	\$1,246.70	\$4,485.00	\$5,731.70
N0924	I	MUSKEGON DEVELOPMENT HQ Sour Zone CPF	HOUGHTON LAKE						26	0	26	26	\$1,246.70	\$4,485.00	\$5,731.70
B6175	I	Coding Products Div Illinois Tool Works	KALKASKA							25	25	25	\$1,198.75	\$4,485.00	\$5,683.75
B6619	I	Tiara Yachts Division of S2 Yachts	HOLLAND	0			2	0	0	23	25	25	\$1,198.75	\$4,485.00	\$5,683.75
B6497	I	JAGUAR ENERGY-OTSEGO LAKE 27 GAS	WATERS				1	0	23	1	25	25	\$1,198.75	\$4,485.00	\$5,683.75
N5985	II	Whitefeather Landfill	PINCONNING			29	42	8	2		82	81	\$3,883.95	\$1,795.00	\$5,678.95
A0169	II	Bradford White Corporation	MIDDLEVILLE				11	15	0	55	81	81	\$3,883.95	\$1,795.00	\$5,678.95
N7271	II	PYRAMID PAVING & CONTRACTING	WEST BRANCH	0			3	74	3	1	81	81	\$3,883.95	\$1,795.00	\$5,678.95
B0965	I	MCC - NORWAY INC	NORWAY				0			24	24	24	\$1,150.80	\$4,485.00	\$5,635.80
N2614	I	NBHX Trim USA Corporation	COMSTOCK PARK	0			1	0	0	22	24	23	\$1,102.85	\$4,485.00	\$5,587.85
M4780	I	ROUSH INDUSTRIES	LIVONIA				12	1	0	9	23	22	\$1,054.90	\$4,485.00	\$5,539.90
N3634	I	HARLAND SANITARY/MANISTEE CNTY LNDFILL	MANISTEE			9	7	5	1		22	22	\$1,054.90	\$4,485.00	\$5,539.90
M4174	I	DETROIT METROPOLITAN AIRPORT	ROMULUS	0			20	1	0	1	22	22	\$1,054.90	\$4,485.00	\$5,539.90
N5719	I	ORCHARD HILL SANITARY LANDFILL	WATERVLIET			4	6	10	2		21	22	\$1,054.90	\$4,485.00	\$5,539.90
N3845	II	EAGLE VALLEY RECYCLE & DISPOSAL	ORION TWP			25	27	21	5		78	78	\$3,740.10	\$1,795.00	\$5,535.10
N0544	I	WARM RAIN CORPORATION	HANCOCK							21	21	21	\$1,006.95	\$4,485.00	\$5,491.95
B2987	II	Buckeye Terminals River Rouge	RIVER ROUGE							77	77	77	\$3,692.15	\$1,795.00	\$5,487.15
B2158	I	BUCKEYE TERMINALS Woodhaven	WOODHAVEN	0						20	20	20	\$959.00	\$4,485.00	\$5,444.00
N1397	II	Merit Energy Company Mentor Gas Plant	UNION CORNERS				59	0	0	17	77	76	\$3,644.20	\$1,795.00	\$5,439.20

Attachment M1 - Michigan Title V Submittal Update - July 2012
Projected 2013 Michigan Fee Billing, Based on 2011 Emissions Data

SRN	Fee Category *	Source Name	City	Pb	HCL	NMOC	NOX	PM10	SO2	VOC	Total emissions of fee subject pollutants	Total billable emissions	Total emissions charge	Total facility charge	Total Fee **
N7807	I	Meiden Technical Center North America	NORTHVILLE TWP				16	1	1	1	20	19	\$911.05	\$4,485.00	\$5,396.05
N2803	EP	Lyon Development, Inc.	NEW HUDSON			7	7	0	5		19	19	\$911.05	\$4,485.00	\$5,396.05
B2064	I	FORD MOTOR CO/RAWSONVILLE PLANT	YPSILANTI	0			11	1	0	6	18	18	\$863.10	\$4,485.00	\$5,348.10
N7228	I	Global Engine Mfg Alliance (GEMA)	DUNDEE				5	6	0	7	18	18	\$863.10	\$4,485.00	\$5,348.10
B4364	I	EDW C LEVY CO PLANT 3	ECORSE					18			18	18	\$863.10	\$4,485.00	\$5,348.10
B2328	I	Uof M - former PFIZER GLOBAL R&D	ANN ARBOR	0			15	2	0	1	17	18	\$863.10	\$4,485.00	\$5,348.10
N6989	I	AVL POWERTRAIN ENGINEERING	ANN ARBOR				13	0	2	3	17	18	\$863.10	\$4,485.00	\$5,348.10
N6833	EP	Wolverine Power, Gaylord Generating Station	GAYLORD				17	0	0	0	17	17	\$815.15	\$4,485.00	\$5,300.15
B1525	EP	COLDWATER BOARD OF PUBLIC UTILITIES	COLDWATER				15	0	0	1	16	16	\$767.20	\$4,485.00	\$5,252.20
B2025	I	Aquatic Co	THREE RIVERS				2		0	14	16	16	\$767.20	\$4,485.00	\$5,252.20
N1099	I	CONSUMERS ENERGY NORTHVILLE	NORTHVILLE	0			15	0	0	1	16	16	\$767.20	\$4,485.00	\$5,252.20
B4197	I	AAR Mobility Systems	CADILLAC					1		15	16	16	\$767.20	\$4,485.00	\$5,252.20
C6230	EP	Marshall City, Electric Powerplant	MARSHALL				13	0	0	1	15	14	\$671.30	\$4,485.00	\$5,156.30
B2013	I	Covalence Specialty Coatings, LLC	CONSTANTINE	0			11	1	0	2	14	14	\$671.30	\$4,485.00	\$5,156.30
A0224	I	ESSROC CEMENT CORP	ESSEXVILLE	0				14			14	14	\$671.30	\$4,485.00	\$5,156.30
B4243	I	EDW C LEVY CO PLANT 6	DETROIT					14			14	14	\$671.30	\$4,485.00	\$5,156.30
N2812	I	LEXAMAR CORPORATION	BOYNE CITY				3	0	0	10	14	13	\$623.35	\$4,485.00	\$5,108.35
N6885	EP	State Street Generating Station	COLDWATER				9	2	0	2	13	13	\$623.35	\$4,485.00	\$5,108.35
B2934	EP	Palisades Nuclear Plant	COVERT	0			4	7	0	1	12	12	\$575.40	\$4,485.00	\$5,060.40
B2918	EP	Consumers Energy Thetford Combustion Turbine	MOUNT MORRIS				12	0	0	0	12	12	\$575.40	\$4,485.00	\$5,060.40
B4288	I	Pharmacia & Upjohn Company LLC	KALAMAZOO	0			10	1	0	1	12	12	\$575.40	\$4,485.00	\$5,060.40
N6974	II	Breitburn Operating LP- Beaver Creek DRZ	GRAYLING				27	0	13	28	69	68	\$3,260.60	\$1,795.00	\$5,055.60
N6010	II	Northern Oaks Recycling & Disposal Facility	HARRISON			22	38	5	3		69	68	\$3,260.60	\$1,795.00	\$5,055.60
B1677	II	Cytec Industries Inc.	KALAMAZOO	0			18	2	0	48	68	68	\$3,260.60	\$1,795.00	\$5,055.60
N7113	EP	Michigan Public Power Agency	KALKASKA				10	1	0	0	12	11	\$527.45	\$4,485.00	\$5,012.45
B7536	EP	HILLSDALE CITY OF PUBLIC UTILITIES	HILLSDALE				10	0	0	1	12	11	\$527.45	\$4,485.00	\$5,012.45
N8151	I	VECTOR PIPELINE Athens Compressor Station	ATHENS				10	1	0	0	12	11	\$527.45	\$4,485.00	\$5,012.45
B1563	I	GREAT LAKES TISSUE	CHEBOYGAN	0			9	1	0	1	11	11	\$527.45	\$4,485.00	\$5,012.45
M4854	EP	Sumpter Generating Plant	BELLEVILLE				8	2	0	1	10	11	\$527.45	\$4,485.00	\$5,012.45
B5421	EP	Vandyke Generating Plant	DORR				10	0	0	0	11	10	\$479.50	\$4,485.00	\$4,964.50
B2942	EP	Consumers Energy Gaylord Combustion Turbine	GAYLORD				10	0	0	0	11	10	\$479.50	\$4,485.00	\$4,964.50
B2805	EP	Detroit Edison Hancock Peaker Station	COMMERCE TWP				10	0	0	0	10	10	\$479.50	\$4,485.00	\$4,964.50
A4302	I	MAHLE industries Inc.	MUSKEGON HTS				4	1	0	4	9	9	\$431.55	\$4,485.00	\$4,916.55
B2808	EP	DETROIT EDISON NORTHEAST STATION	WARREN	0			9	0	0	0	9	9	\$431.55	\$4,485.00	\$4,916.55
N3759	I	GREAT LAKES GAS TRANSMISSION #9	RAPID RIVER				8	0	0	0	9	8	\$383.60	\$4,485.00	\$4,868.60
N2915	I	TOYOTA MOTOR ENGINEERING & MFG	ANN ARBOR	0			7	0	0	1	9	8	\$383.60	\$4,485.00	\$4,868.60
B5462	I	Prize Petroleum LLC, Rich Field Gas Plant	NORTH BRANCH						8		8	8	\$383.60	\$4,485.00	\$4,868.60

Attachment M1 - Michigan Title V Submittal Update - July 2012
Projected 2013 Michigan Fee Billing, Based on 2011 Emissions Data

SRN	Fee Category *	Source Name	City	Pb	HCL	NMOC	NOX	PM10	SO2	VOC	Total emissions of fee subject pollutants	Total billable emissions	Total emissions charge	Total facility charge	Total Fee **
B2757	I	CHRYSLER WARREN STAMPING PLANT	WARREN				5	0	0	3	8	8	\$383.60	\$4,485.00	\$4,868.60
N0854	I	TI GROUP AUTOMOTIVE SYSTEMS Caro Test Center	CARO							8	8	8	\$383.60	\$4,485.00	\$4,868.60
B7977	EP	ZEELAND BOARD OF PUBLIC WORKS	ZEELAND				7	0	0	1	8	8	\$383.60	\$4,485.00	\$4,868.60
N6962	I	Ricardo Inc.	VAN BUREN TWP				5	0	0	2	7	7	\$335.65	\$4,485.00	\$4,820.65
N2586	EP	Holland BPW, 48th Street Peaking Station	HOLLAND	0			6	1	0	0	7	7	\$335.65	\$4,485.00	\$4,820.65
B2817	II	VERTELLUS SPECIALTIES, INC.	ZEELAND	0			3	0	0	60	64	63	\$3,020.85	\$1,795.00	\$4,815.85
A5496	I	Precision Coatings, Inc.	WALLED LAKE							6	6	6	\$287.70	\$4,485.00	\$4,772.70
N1316	I	NJT Enterprises (Formally Mayco Plastics)	STERLING HTS				0	0	0	6	6	6	\$287.70	\$4,485.00	\$4,772.70
B6614	I	Holland Panel Products	HOLLAND				1	0	0	5	6	6	\$287.70	\$4,485.00	\$4,772.70
N1863	I	Lapeer Plating & Plastics, Inc.	LAPEER				1	0	0	5	5	6	\$287.70	\$4,485.00	\$4,772.70
B2798	EP	DETROIT EDISON/ DELRAY POWER PLANT	DETROIT				4	1	0	0	5	5	\$239.75	\$4,485.00	\$4,724.75
B2795	EP	DETROIT EDISON COLFAX PEAKERS	FOWLERVILLE				5	0	0	0	5	5	\$239.75	\$4,485.00	\$4,724.75
P0262	I	BLUE WATER RENEWABLES	SMITHS CREEK				4	0	0	0	5	4	\$191.80	\$4,485.00	\$4,676.80
B4031	I	RACER Trust - Pontiac Assembly	PONTIAC	0			4	0	0	0	4	4	\$191.80	\$4,485.00	\$4,676.80
A8217	I	McLAREN PERFORMANCE TECHNOLOGIES	LIVONIA				0	0	0	4	4	4	\$191.80	\$4,485.00	\$4,676.80
N1470	I	Rec Boat Holdings- Sport & Engineering	CADILLAC							4	4	4	\$191.80	\$4,485.00	\$4,676.80
B3518	I	UNITED STATES GYPSUM CO	RIVER ROUGE				1	3	0	0	4	4	\$191.80	\$4,485.00	\$4,676.80
N6037	I	MICHIGAN ENVIRONS INC	MENOMINEE			2		1			3	3	\$143.85	\$4,485.00	\$4,628.85
B2812	EP	DETROIT EDISON CONNERS CREEK	DETROIT	0			3	0	0	0	3	3	\$143.85	\$4,485.00	\$4,628.85
B4925	II	O-N Minerals(MI) dba Carmeuse Lime	ROGERS CITY	0			2	57	0	0	59	59	\$2,829.05	\$1,795.00	\$4,624.05
N6039	I	K & W LANDFILL INC	ONTONAGON			2		0			3	2	\$95.90	\$4,485.00	\$4,580.90
N6033	I	DAFTER SANITARY LANDFILL INC	DAFTER			2		0			3	2	\$95.90	\$4,485.00	\$4,580.90
B7287	EP	Sturgis Municipal Power Plant	STURGIS				2	0	0	0	3	2	\$95.90	\$4,485.00	\$4,580.90
B2185	EP	DETROIT PUBLIC LIGHTING DEPARTMENT	DETROIT	0			2	0	0	0	3	2	\$95.90	\$4,485.00	\$4,580.90
N6035	I	DELTA SOLID WASTE MGMT AUTHORITY	ESCANABA			2					2	2	\$95.90	\$4,485.00	\$4,580.90
N6731	EP	CMS Generation Kzoo River Gen. Station	COMSTOCK TWP				1	0	0	0	1	1	\$47.95	\$4,485.00	\$4,532.95
B6481	I	MID MICHIGAN GAS STORAGE-CAPAC	CAPAC				0	0	0	1	1	1	\$47.95	\$4,485.00	\$4,532.95
N5576	I	ANR Pipeline - Goodwell Compressor	WHITE CLOUD				1	0	0	0	1	1	\$47.95	\$4,485.00	\$4,532.95
N7786	EP	DTE PONTIAC NORTH, LLC	PONTIAC	0			1	0	0	0	1	1	\$47.95	\$4,485.00	\$4,532.95
N6251	I	CABOT CORPORATION	MIDLAND					1			1	1	\$47.95	\$4,485.00	\$4,532.95
N3517	EP	THUMB ELECTRIC COOPERATIVE	UBLY				0	0	0	0	0	0	\$0.00	\$4,485.00	\$4,485.00
N7396	I	WHITE PINE COPPER REFINERY INC	WHITE PINE					0			0	0	\$0.00	\$4,485.00	\$4,485.00
B2116	I	DETROIT STEEL CO TRENTON	TRENTON	0									\$0.00	\$4,485.00	\$4,485.00
A6466	I	TTOD Liquidation, Inc.	DECKERVILLE										\$0.00	\$4,485.00	\$4,485.00
N5935	I	Mich Con - Alpena Compressor Station	HARRISON										\$0.00	\$4,485.00	\$4,485.00
B6553	EP	UPPCO PORTAGE STATION	SOUTH RANGE	0									\$0.00	\$4,485.00	\$4,485.00
N2206	II	BANKS HARDWOODS, INC.	WHITE PIGEON	0			29	16	1	9	56	55	\$2,637.25	\$1,795.00	\$4,432.25

Attachment M1 - Michigan Title V Submittal Update - July 2012
Projected 2013 Michigan Fee Billing, Based on 2011 Emissions Data

SRN	Fee Category *	Source Name	City	Pb	HCL	NMOC	NOX	PM10	SO2	VOC	Total emissions of fee subject pollutants	Total billable emissions	Total emissions charge	Total facility charge	Total Fee **
N5675	II	SPARTAN STEEL COATING	MONROE				41	3	0	11	55	55	\$2,637.25	\$1,795.00	\$4,432.25
N6976	II	Huntington Foam	GREENVILLE	0			3	0	0	51	55	54	\$2,589.30	\$1,795.00	\$4,384.30
B3533	II	EDW C LEVY CO PLANT 1	DETROIT					52			52	52	\$2,493.40	\$1,795.00	\$4,288.40
B6001	II	Herman Miller, Inc	ZEELAND	0			30	1	17	4	51	52	\$2,493.40	\$1,795.00	\$4,288.40
N6008	II	Oakland Heights Development, Inc.	AUBURN HILLS			12	21	14	4		50	51	\$2,445.45	\$1,795.00	\$4,240.45
B1607	II	GM LLC FLINT ENGINE OPERATIONS	FLINT					1		48	49	49	\$2,349.55	\$1,795.00	\$4,144.55
N6006	II	Autumn Hills Recycling & Disposal Facility	ZEELAND			17	25	6	1		48	49	\$2,349.55	\$1,795.00	\$4,144.55
B2952	II	SILBOND CORP	WESTON	0			3	0	0	45	48	48	\$2,301.60	\$1,795.00	\$4,096.60
N0895	II	LACKS INDUSTRIES INC	KENTWOOD				8	1	0	38	47	47	\$2,253.65	\$1,795.00	\$4,048.65
B1479	II	CERTAINTEED CEILINGS CORPORATION	LANSE				39	5	0	1	45	45	\$2,157.75	\$1,795.00	\$3,952.75
B7244	II	JBS Plainwell, Inc.	PLAINWELL	0			22	2	19	1	44	44	\$2,109.80	\$1,795.00	\$3,904.80
N3748	II	Belding Tank Technologies, Inc.	BELDING							44	44	44	\$2,109.80	\$1,795.00	\$3,904.80
B7276	II	L PERRIGO CO	ALLEGAN	0			7	1	0	35	44	43	\$2,061.85	\$1,795.00	\$3,856.85
N2689	II	VIENNA JUNCTION LANDFILL	ERIE			8	5	30	0		43	43	\$2,061.85	\$1,795.00	\$3,856.85
B6307	II	City of Battle Creek WWTP	BATTLE CREEK	0			5	8	28	2	43	43	\$2,061.85	\$1,795.00	\$3,856.85
B3567	II	ST MARY'S CEMENT	DETROIT	0			5	38	0	0	43	43	\$2,061.85	\$1,795.00	\$3,856.85
B7013	II	HURON CASTING/BLUE DIAMOND STEEL CASTING	PIGEON	0			8	30	1	4	42	43	\$2,061.85	\$1,795.00	\$3,856.85
K2155	II	FERRIS STATE UNIVERSITY	BIG RAPIDS	0			38	2	0	2	43	42	\$2,013.90	\$1,795.00	\$3,808.90
B7090	II	MICHIGAN MILK PRODUCERS ASSN	OVID	0			18	23	0	1	42	42	\$2,013.90	\$1,795.00	\$3,808.90
N3303	II	DUNCAN AVIATION INC.	BATTLE CREEK							40	40	40	\$1,918.00	\$1,795.00	\$3,713.00
N5205	II	WEXFORD SAND COMPANY	HARRIETTA				6	18	16	0	39	40	\$1,918.00	\$1,795.00	\$3,713.00
N5619	II	Pitsch Sanitary Landfill	BELDING			39	0	0	0		40	39	\$1,870.05	\$1,795.00	\$3,665.05
N7316	II	GRAND RIVER PRINTING AND IMAGING	BELLEVILLE				0	0	0	39	40	39	\$1,870.05	\$1,795.00	\$3,665.05
B6037	II	Marathon Petroleum-BayCity Marquette St	BAY CITY				1			37	39	38	\$1,822.10	\$1,795.00	\$3,617.10
B1537	II	Ralston Foods	BATTLE CREEK	0			12	23	0	3	37	38	\$1,822.10	\$1,795.00	\$3,617.10
M1954	II	COVENANT HEALTH CARE	SAGINAW	0			37				37	37	\$1,774.15	\$1,795.00	\$3,569.15
N5599	II	LYONS INDUSTRIES	DOWAGIAC							36	36	36	\$1,726.20	\$1,795.00	\$3,521.20
N1216	II	Westside Recycling and Disposal Facility	THREE RIVERS			28	1	6	1		35	36	\$1,726.20	\$1,795.00	\$3,521.20
B6202	II	E-T-M Enterprises, Inc.	GRAND LEDGE							34	34	34	\$1,630.30	\$1,795.00	\$3,425.30
B9043	II	CITGO PETROLEUM CORP	NILES							34	34	34	\$1,630.30	\$1,795.00	\$3,425.30
B9132	II	Buckeye Terminals, LLC - NILES TERMINAL	NILES							33	33	33	\$1,582.35	\$1,795.00	\$3,377.35
B9206	II	SUNOCO PARTNERS - Romulus	ROMULUS							33	33	33	\$1,582.35	\$1,795.00	\$3,377.35
B5215	II	MARATHON PETROLEUM - LANSING	LANSING							32	32	32	\$1,534.40	\$1,795.00	\$3,329.40
B9072	II	Marathon Petroleum - N. Muskegon	N MUSKEGON							32	32	32	\$1,534.40	\$1,795.00	\$3,329.40
B9201	II	MARATHON PETROLEUM ROMULUS	ROMULUS							32	32	32	\$1,534.40	\$1,795.00	\$3,329.40
N6664	II	Custom Crushing & Recycle, Inc.	BYRON CENTER				20	8	1	2	31	31	\$1,486.45	\$1,795.00	\$3,281.45
A6218	II	Dunn Paper, Inc.	PORT HURON	0			20	2	0	9	31	31	\$1,486.45	\$1,795.00	\$3,281.45

Attachment M1 - Michigan Title V Submittal Update - July 2012
Projected 2013 Michigan Fee Billing, Based on 2011 Emissions Data

SRN	Fee Category *	Source Name	City	Pb	HCL	NMOC	NOX	PM10	SO2	VOC	Total emissions of fee subject pollutants	Total billable emissions	Total emissions charge	Total facility charge	Total Fee **
B1771	II	FORD MOTOR COMPANY-VAN DYKE PLANT	STERLING HTS	0			11	1	0	19	30	31	\$1,486.45	\$1,795.00	\$3,281.45
K1271	II	HENRY FORD HOSPITAL	DETROIT	0			26	2	1	2	30	31	\$1,486.45	\$1,795.00	\$3,281.45
B1620	II	CENTRAL ASPHALT INC.	MOUNT PLEASNT	0			4	22	0	4	31	30	\$1,438.50	\$1,795.00	\$3,233.50
B8571	II	THE ANDERSONS WHITE PIGEON GRAIN	WHITE PIGEON				1	29	0	0	31	30	\$1,438.50	\$1,795.00	\$3,233.50
N6207	II	SMITHS CREEK LANDFILL	SMITHS CREEK			16	5	5	3		29	29	\$1,390.55	\$1,795.00	\$3,185.55
A4493	II	Valassis Manufacturing Company	LIVONIA				3	0	0	25	28	28	\$1,342.60	\$1,795.00	\$3,137.60
N5101	II	U.S. MARBLE, INC.	REMUS							28	28	28	\$1,342.60	\$1,795.00	\$3,137.60
B7117	II	Gavilon Grain LLC	CARROLLTON				2	26	0	0	28	28	\$1,342.60	\$1,795.00	\$3,137.60
N6512	II	Westside Gas Producers, LLC	THREE RIVERS				21	1	2	4	27	28	\$1,342.60	\$1,795.00	\$3,137.60
B4931	II	CARMEUSE LIME & STONE - PORT INLAND	GULLIVER					27			27	27	\$1,294.65	\$1,795.00	\$3,089.65
B5830	II	AJAX METAL PROCESSING INC.	DETROIT	0			12	1	0	14	27	27	\$1,294.65	\$1,795.00	\$3,089.65
E4437	II	NORTHWEST HARDWOODS	GRAND RAPIDS	0			1	0	0	26	27	27	\$1,294.65	\$1,795.00	\$3,089.65
B3120	II	AJAX MATERIALS CORPORATION	ROMULUS	0			5	15	1	6	27	27	\$1,294.65	\$1,795.00	\$3,089.65
A0367	II	TECHNISAND COMPANY - BRIDGMAN	BRIDGMAN				13	10	0	4	27	27	\$1,294.65	\$1,795.00	\$3,089.65
B2763	II	U.S. Army Garrison-Detroit Arsenal	WARREN	0			22	2	1	2	27	27	\$1,294.65	\$1,795.00	\$3,089.65
B4138	II	AJAX MATERIALS CORPORATION	WARREN	0			5	15	1	6	26	27	\$1,294.65	\$1,795.00	\$3,089.65
N3188	II	RENO GAS PLANT	WHITTEMORE				26	0	0	0	26	26	\$1,246.70	\$1,795.00	\$3,041.70
A5806	II	Sara Lee Corporation	ZEELAND	0			19	3	0	4	26	26	\$1,246.70	\$1,795.00	\$3,041.70
N2184	II	RIETH RILEY CONSTRUCTION CO INC	ROSCOMMON	0			13	8	1	3	26	25	\$1,198.75	\$1,795.00	\$2,993.75
N8295	II	SUPERIOR ASPHALT INC	CALEDONIA	0			5	14	0	6	25	25	\$1,198.75	\$1,795.00	\$2,993.75
N0842	II	Gage Products Company	FERNDALE	0			3	0	0	22	24	25	\$1,198.75	\$1,795.00	\$2,993.75
B3241	II	FORD MOTOR CO BROWNSTOWN	ROMULUS	0			17	2	0	6	24	25	\$1,198.75	\$1,795.00	\$2,993.75
B7778	II	Buckeye Terminals Ferrysburg Terminal	FERRYSBURG							24	24	24	\$1,150.80	\$1,795.00	\$2,945.80
N3929	II	FIBREK MENOMINEE MILL	MENOMINEE	0			19	3	0	2	24	24	\$1,150.80	\$1,795.00	\$2,945.80
N5590	II	Hartland Production Facility	HARTLAND				9	1	0	14	24	24	\$1,150.80	\$1,795.00	\$2,945.80
B9041	II	CITGO PETROLEUM CORP	JACKSON							24	24	24	\$1,150.80	\$1,795.00	\$2,945.80
N6004	II	City of Midland Utilities Division	MIDLAND	0		10	12	2	0		23	24	\$1,150.80	\$1,795.00	\$2,945.80
N1656	II	ALBRECHT SAND AND GRAVEL	SNOVER	0			12	1	10	0	24	23	\$1,102.85	\$1,795.00	\$2,897.85
B1646	II	RIETH RILEY CONSTRUCTION	LANSING	0			4	15	0	4	24	23	\$1,102.85	\$1,795.00	\$2,897.85
B1656	II	New NGC, Inc.	NATIONAL CITY				9	14	0	0	23	23	\$1,102.85	\$1,795.00	\$2,897.85
N5988	II	CITY ENVIRONMENTAL SERVICES WATERS	FREDERIC			5	12	3	3		23	23	\$1,102.85	\$1,795.00	\$2,897.85
B6488	II	DELTA TUBE & FABRICATING	HOLLY				14		0	9	23	23	\$1,102.85	\$1,795.00	\$2,897.85
B6258	II	Citgo Petroleum Corp	FERRYSBURG							22	22	22	\$1,054.90	\$1,795.00	\$2,849.90
N7415	II	RIETH-RILEY CONSTRUCTION CO INC	KALAMAZOO	0			4	14	0	4	22	22	\$1,054.90	\$1,795.00	\$2,849.90
N6060	II	BREITBURN OPERATING LP - SHERMAN 35	GILBOS CORNER				10	0	0	12	22	22	\$1,054.90	\$1,795.00	\$2,849.90
B1986	II	RIETH-RILEY CONSTRUCTION CO., INC.	ZEELAND	0			3	14	0	4	22	21	\$1,006.95	\$1,795.00	\$2,801.95
N5241	II	GREAT LAKES AGGREGATES-SYLVANIA	S ROCKWOOD					21			21	21	\$1,006.95	\$1,795.00	\$2,801.95

Attachment M1 - Michigan Title V Submittal Update - July 2012
Projected 2013 Michigan Fee Billing, Based on 2011 Emissions Data

SRN	Fee Category *	Source Name	City	Pb	HCL	NMOC	NOX	PM10	SO2	VOC	Total emissions of fee subject pollutants	Total billable emissions	Total emissions charge	Total facility charge	Total Fee **
N3261	II	GLEN'S SANITARY LANDFILL	MAPLE CITY			2	11	5	3		21	21	\$1,006.95	\$1,795.00	\$2,801.95
B4147	II	RIETH RILEY CONSTRUCTION CO INC	MANTON	0			10	7	1	3	21	21	\$1,006.95	\$1,795.00	\$2,801.95
M4456	II	Tower Defense & Aerospace, LLC.	DETROIT					11		10	20	21	\$1,006.95	\$1,795.00	\$2,801.95
B9074	II	MARATHON PETROLEUM CO-JACKSON	JACKSON							20	20	20	\$959.00	\$1,795.00	\$2,754.00
B6633	II	AMERICAN AXLE & MANUFACTURING, INC	THREE RIVERS	0			13	2	0	5	20	20	\$959.00	\$1,795.00	\$2,754.00
N7259	II	Alpena Aggregate Inc.	ALPENA				15	3	1	1	20	20	\$959.00	\$1,795.00	\$2,754.00
N2804	II	CENTRAL SANITARY LF	PIERSON			6	8	4	2		19	20	\$959.00	\$1,795.00	\$2,754.00
B5921	II	LENAWEE CO ROAD COMMISSION	ADDISON	0			0	16	1	1	19	18	\$863.10	\$1,795.00	\$2,658.10
A6714	II	Georgia-Pacific Corrugated II LLC	MILAN	0			3	14	0	1	18	18	\$863.10	\$1,795.00	\$2,658.10
N2123	II	RIETH RILEY CONSTRUCTION CO INC	ADA	0			5	9	1	3	18	18	\$863.10	\$1,795.00	\$2,658.10
N1836	II	H L BROWN OPERATING, REED CITY CPF	LINCOLN TWP				17	0	0	0	18	17	\$815.15	\$1,795.00	\$2,610.15
N0547	II	KRUGER COMMODITIES	HAMILTON	0			15	1	0	1	17	17	\$815.15	\$1,795.00	\$2,610.15
B2992	II	Michigan Paving & Materials Kzoo Asphalt	KALAMAZOO	0			5	6	1	5	17	17	\$815.15	\$1,795.00	\$2,610.15
N3203	II	Stoneco Inc., 100th Street, Division 84	BYRON CENTER				12	3	1	1	17	17	\$815.15	\$1,795.00	\$2,610.15
N1966	II	Michigan Automotive Compressor Inc.	PARMA	0			8	1	0	8	17	17	\$815.15	\$1,795.00	\$2,610.15
B5838	II	RIETH RILEY CONSTRUCTION	BENTON HARBOR	0			3	11	0	3	17	17	\$815.15	\$1,795.00	\$2,610.15
B7110	II	MARATHON PETROLEUM CO - FLINT	MOUNT MORRIS							17	17	17	\$815.15	\$1,795.00	\$2,610.15
N5816	II	AGGREGATE & DEVELOPING LLC	ALLEGAN				12	3	1	1	16	17	\$815.15	\$1,795.00	\$2,610.15
B5815	II	GENERAL MOTORS ROMULUS PLANT	ROMULUS				7	1	0	8	16	16	\$767.20	\$1,795.00	\$2,562.20
B4137	II	AJAX MATERIALS CORPORATION	ROCHESTER HLS	0			3	9	0	4	16	16	\$767.20	\$1,795.00	\$2,562.20
N6515	II	ADVANCED FIBERMOLDING INC	LEROY							16	16	16	\$767.20	\$1,795.00	\$2,562.20
M4586	II	MATERIAL PROCESSING INC	RIVERVIEW							16	16	16	\$767.20	\$1,795.00	\$2,562.20
N2627	II	Great Lakes Aggregates, HAZMAG Plant	S ROCKWOOD				12	2	1	1	16	16	\$767.20	\$1,795.00	\$2,562.20
B5823	II	AJAX MATERIALS CORP	BRIGHTON	0			3	9	0	4	16	16	\$767.20	\$1,795.00	\$2,562.20
N1580	II	SAGINAW ASPHALT COMPANY - PLANT 9	SAGINAW	0			4	6	0	6	16	16	\$767.20	\$1,795.00	\$2,562.20
P0336	II	HENRY FORD W BLOOMFIELD HOSPITAL	W BLOOMFIELD	0			13	1	0	1	15	15	\$719.25	\$1,795.00	\$2,514.25
E5094	II	Paulstra CRC Corporation	GRAND RAPIDS	0			0	3	0	12	15	15	\$719.25	\$1,795.00	\$2,514.25
B3195	II	CADILLAC ASPHALT PRODUCTS	DETROIT	0			6	4	0	5	15	15	\$719.25	\$1,795.00	\$2,514.25
N0758	II	MICHIGAN PAVING & MATERIALS CO.	GRAND RAPIDS	0			6	2	1	6	15	15	\$719.25	\$1,795.00	\$2,514.25
N1461	II	WELCH FOODS INC	LAWTON	0			11	1	0	3	15	15	\$719.25	\$1,795.00	\$2,514.25
B4550	II	VACUUM ORNA METAL INC	ROMULUS					0	0	15	15	15	\$719.25	\$1,795.00	\$2,514.25
B4280	II	CADILLAC ASPHALT LLC	BELLEVILLE	0			5	4	1	5	14	15	\$719.25	\$1,795.00	\$2,514.25
N6007	II	Tri-City RDF	CARSONVILLE			4	5	3	3		14	15	\$719.25	\$1,795.00	\$2,514.25
B2363	II	HOWARD FINISHING LLC	MADISON HTS				2	0	0	12	15	14	\$671.30	\$1,795.00	\$2,466.30
B1598	II	FLINT WATER POLLUTION CONTROL	FLINT	0			12	0	0	2	14	14	\$671.30	\$1,795.00	\$2,466.30
B1960	II	Cadillac Asphalt LLC	WIXOM	0			5	4	0	5	14	14	\$671.30	\$1,795.00	\$2,466.30
B8176	II	MARATHON PIPE LINE LLC	SAMARIA							14	14	14	\$671.30	\$1,795.00	\$2,466.30

Attachment M1 - Michigan Title V Submittal Update - July 2012
Projected 2013 Michigan Fee Billing, Based on 2011 Emissions Data

SRN	Fee Category *	Source Name	City	Pb	HCL	NMOC	NOX	PM10	SO2	VOC	Total emissions of fee subject pollutants	Total billable emissions	Total emissions charge	Total facility charge	Total Fee **
B7625	II	LAFATA ENTERPRISES INC.	SHELBY TWP							14	14	14	\$671.30	\$1,795.00	\$2,466.30
N6283	II	AGGREGATE INDUSTRIES - AC1	KALAMAZOO				10	2	1	1	14	14	\$671.30	\$1,795.00	\$2,466.30
N6861	II	Custom Crushing Lakeshore	BYRON CENTER				11	1	1	1	13	14	\$671.30	\$1,795.00	\$2,466.30
N1761	II	SPARTAN ASPHALT PAVING CO.	LANSING	0			5	3	1	5	12	14	\$671.30	\$1,795.00	\$2,466.30
A0749	II	AMERIWOOD INDUSTRIES	DOWAGIAC	0			2	8	0	3	13	13	\$623.35	\$1,795.00	\$2,418.35
B5817	II	RIETH-RILEY CONSTRUCTION CO., INC.	MASON	0			2	9	0	2	13	13	\$623.35	\$1,795.00	\$2,418.35
N1810	II	MICHIGAN AGRICULTURAL COMMODITIES	BLISSFIELD				1	12	0	0	13	13	\$623.35	\$1,795.00	\$2,418.35
N1905	II	BOLEN ASPHALT PAVING, INC.	LACHINE	0			5	7	0	1	13	13	\$623.35	\$1,795.00	\$2,418.35
B6646	II	Sunoco Pipeline Marysville Pump Station	MARYSVILLE							13	13	13	\$623.35	\$1,795.00	\$2,418.35
M4752	II	JOHN D DINGELL VA MEDICAL CENTER	DETROIT	0			11	1	0	1	12	13	\$623.35	\$1,795.00	\$2,418.35
N1384	II	RIETH-RILEY CONSTRUCTION CO., INC.	BIG RAPIDS	0			4	6	1	2	12	13	\$623.35	\$1,795.00	\$2,418.35
N7582	II	MICHIGAN AGRICULTURAL COMMODITIES	NEWAYGO				1	11	0	0	13	12	\$575.40	\$1,795.00	\$2,370.40
N5403	II	ACE ASPHALT & PAVING CO INC PLANT 1	DAVISBURG	0			3	4	0	5	13	12	\$575.40	\$1,795.00	\$2,370.40
N7246	II	RIETH-RILEY CONSTRUCTION CO., INC.	BOYNE FALLS	0			3	6	1	2	13	12	\$575.40	\$1,795.00	\$2,370.40
N7031	II	BREITBURN OPERATING - FRASER 8 CPF	FRASER TWP				8	0	0	4	12	12	\$575.40	\$1,795.00	\$2,370.40
M2273	II	Marathon Petroleum Company Traverse City	TRAVERSE CITY				0			12	12	12	\$575.40	\$1,795.00	\$2,370.40
N6654	II	Wolverine Pipe Line Company	STOCKBRIDGE							12	12	12	\$575.40	\$1,795.00	\$2,370.40
N7601	II	AMERICAN AGGREGATES OF MI METSO	OXFORD				6	5	0	1	12	12	\$575.40	\$1,795.00	\$2,370.40
N6837	II	ROCK RECYCLERS	S ROCKWOOD				8	2	1	1	11	12	\$575.40	\$1,795.00	\$2,370.40
N5998	II	AGGREGATE INDUSTRIES - NB1	KALAMAZOO				8	2	1	1	11	12	\$575.40	\$1,795.00	\$2,370.40
N5460	II	MICHIGAN PAVING & MATERIALS CO	JACKSON	0			5	2	0	4	12	11	\$527.45	\$1,795.00	\$2,322.45
N6076	II	BREITBURN OPERATING MONITOR 11 CPF	BAY CITY				7	0	0	4	11	11	\$527.45	\$1,795.00	\$2,322.45
B4043	II	Worthen Coated Fabrics	GRAND RAPIDS					0	0	11	11	11	\$527.45	\$1,795.00	\$2,322.45
N7482	II	DART OIL & GAS - GOOSE LAKE	LEROY				9	0	0	2	11	11	\$527.45	\$1,795.00	\$2,322.45
N7132	II	Sun Gro Horticulture	QUINCY	0			3	8	0	0	11	11	\$527.45	\$1,795.00	\$2,322.45
M4403	II	D N R INC	WESTLAND							11	11	11	\$527.45	\$1,795.00	\$2,322.45
B4924	II	CARMEUSE LIME & STONE CEDARVILLE	CEDARVILLE					11			11	11	\$527.45	\$1,795.00	\$2,322.45
B4287	II	CADILLAC ASPHALT, L.L.C.	CLARKSTON	0			4	3	0	4	11	11	\$527.45	\$1,795.00	\$2,322.45
B4167	II	ELMER'S CRANE AND DOZER, INC.	TRAVERSE CITY	0			5	6	0	0	11	11	\$527.45	\$1,795.00	\$2,322.45
N3987	II	WILLIAM BEAUMONT HOSPITAL	TROY	0			9	1	0	1	10	11	\$527.45	\$1,795.00	\$2,322.45
N3177	II	AGGREGATE INDUSTRIES AC3 PLANT	KALAMAZOO				8	1	1	1	10	11	\$527.45	\$1,795.00	\$2,322.45
A2534	II	WOODLAND PAVING CO.	COMSTOCK PARK	0			4	2	0	4	11	10	\$479.50	\$1,795.00	\$2,274.50
N3396	II	A & E AGG. INC (PLANT 1)	WARREN				7	2	0	1	11	10	\$479.50	\$1,795.00	\$2,274.50
N6011	II	MUSKEGON COUNTY SOLID WASTE	RAVENNA			4	1	5	0		10	10	\$479.50	\$1,795.00	\$2,274.50
N0503	II	LYON SAND & GRAVEL - RAP PLANT	WIXOM				7	2	0	1	10	10	\$479.50	\$1,795.00	\$2,274.50
B4986	II	MICHIGAN AGRICULTURAL COMMODITIES	BRECKENRIDGE				3	7	0	0	10	10	\$479.50	\$1,795.00	\$2,274.50
A7757	II	U S SILICA CO	ROCKWOOD	0			3	7	0	0	10	10	\$479.50	\$1,795.00	\$2,274.50

Attachment M1 - Michigan Title V Submittal Update - July 2012
Projected 2013 Michigan Fee Billing, Based on 2011 Emissions Data

SRN	Fee Category *	Source Name	City	Pb	HCL	NMOC	NOX	PM10	SO2	VOC	Total emissions of fee subject pollutants	Total billable emissions	Total emissions charge	Total facility charge	Total Fee **
M4808	II	BASF Corporation	WYANDOTTE							10	10	10	\$479.50	\$1,795.00	\$2,274.50
N2383	II	DGP INC.	MARLETTE							10	10	10	\$479.50	\$1,795.00	\$2,274.50
N1643	II	Cass County Road Commission	CASSOPOLIS	0			2	7	0	1	10	10	\$479.50	\$1,795.00	\$2,274.50
B1956	II	AJAX MATERIALS CORPORATION	AUBURN HILLS	0			2	5	0	2	10	9	\$431.55	\$1,795.00	\$2,226.55
B8863	II	ADM Grain Company	WEBBERVILLE	0			6	3	0	0	10	9	\$431.55	\$1,795.00	\$2,226.55
N5747	II	HI-TECH COATINGS, INC.	WARREN	0			3	0	0	6	10	9	\$431.55	\$1,795.00	\$2,226.55
N5597	II	SAGINAW ASPHALT COMPANY PLANT 4	UBLY	0			3	2	1	3	10	9	\$431.55	\$1,795.00	\$2,226.55
N0731	II	Nortru, LLC	DETROIT	0		9	0	0	0		9	9	\$431.55	\$1,795.00	\$2,226.55
B4922	II	STONECO INC	OTTAWA LAKE					9			9	9	\$431.55	\$1,795.00	\$2,226.55
B4380	II	Buckeye Terminals, LLC	NAPOLEON							9	9	9	\$431.55	\$1,795.00	\$2,226.55
N6474	II	ENBRIDGE PIPELINES (TOLEDO) INC.	DANSVILLE							9	9	9	\$431.55	\$1,795.00	\$2,226.55
N2541	II	MICHIGAN PAVING & MATERIALS	MONROE				9		0	0	9	9	\$431.55	\$1,795.00	\$2,226.55
N0579	II	KLETT CONSTRUCTION DIVISION	PAW PAW	0			3	3	0	3	9	9	\$431.55	\$1,795.00	\$2,226.55
N0989	II	Cadillac Asphalt - Shelby Plant	SHELBY TWP	0			4	2	1	2	9	9	\$431.55	\$1,795.00	\$2,226.55
N5841	II	HALLIDAY SAND & GRAVEL PLANT #2	ADA				6	2	0	0	9	8	\$383.60	\$1,795.00	\$2,178.60
N6413	II	RIETH RILEY CONSTRUCTION CO., INC.	BAY SHORE				5	3	0	0	9	8	\$383.60	\$1,795.00	\$2,178.60
N3631	II	STANLEY MINERAL RESOURCES	CLINTON				6	1	0	1	9	8	\$383.60	\$1,795.00	\$2,178.60
B4977	II	Pinnacle Foods Group LLC	IMLAY CITY	0			6	0	0	2	9	8	\$383.60	\$1,795.00	\$2,178.60
N2626	II	ACE ASPHALT & PAVING PLANT 4	PORT HURON	0			2	3	0	3	9	8	\$383.60	\$1,795.00	\$2,178.60
M1812	II	ST JOHN HOSPITAL & MEDICAL CENTER	DETROIT	0			7	1	0	0	9	8	\$383.60	\$1,795.00	\$2,178.60
N7270	II	Nugent Sand Co., Inc.	TWIN LAKE				0	8			8	8	\$383.60	\$1,795.00	\$2,178.60
N0871	II	CONFORMANCE COATINGS & PROTOTYPE	MARYSVILLE							8	8	8	\$383.60	\$1,795.00	\$2,178.60
N7407	II	BARBER CREEK SAND & GRAVEL	KENT CITY				6	1	0	1	8	8	\$383.60	\$1,795.00	\$2,178.60
C5728	II	ANDREWS UNIVERSITY	BERRIEN SPRGS	0			7	1	0	0	8	8	\$383.60	\$1,795.00	\$2,178.60
N7108	II	Bit-Mat Products of Michigan Inc	BAY CITY				3	0	0	5	8	8	\$383.60	\$1,795.00	\$2,178.60
N7421	II	DTE ENERGY-MICHCON, WILLOW	YPSILANTI				5	0	0	3	8	8	\$383.60	\$1,795.00	\$2,178.60
M3912	II	ADM Grain Company	GRAND LEDGE	0			2	6	0	0	8	8	\$383.60	\$1,795.00	\$2,178.60
N0436	II	PAYNE & DOLAN INC C22	ALBA				2	3	3	0	8	8	\$383.60	\$1,795.00	\$2,178.60
M3653	II	V A MEDICAL CENTER	ANN ARBOR	0			7	1	0	0	8	8	\$383.60	\$1,795.00	\$2,178.60
N7981	II	AGGREGATE & DEVELOPING SUPERIOR PIT	ALLEGAN				5	3	0	0	8	8	\$383.60	\$1,795.00	\$2,178.60
M1967	II	PROVIDENCE HOSPITAL & MED CENTERS	SOUTHFIELD	0			7	1	0	0	8	8	\$383.60	\$1,795.00	\$2,178.60
B6569	II	HENKEL Corporation	WARREN	0			1	4	0	3	8	8	\$383.60	\$1,795.00	\$2,178.60
B1485	II	PYRAMID PAVING & CONTRACTING CO	ESSEXVILLE	0			2	4	0	2	8	8	\$383.60	\$1,795.00	\$2,178.60
N6579	II	AJAX MATERIALS CORPORATION	NEW HAVEN	0			2	4	0	2	7	8	\$383.60	\$1,795.00	\$2,178.60
B4252	EP	AEP COOK NUCLEAR PLANT	BRIDGMAN	0			7	0	0	0	8	7	\$335.65	\$1,795.00	\$2,130.65
N6488	II	LC REDI MIX INC	LAKE CITY				6	1	0	0	8	7	\$335.65	\$1,795.00	\$2,130.65
N1357	II	RIETH-RILEY CONSTRUCTION	BAY SHORE	0			3	3	0	1	8	7	\$335.65	\$1,795.00	\$2,130.65

Attachment M1 - Michigan Title V Submittal Update - July 2012
Projected 2013 Michigan Fee Billing, Based on 2011 Emissions Data

SRN	Fee Category *	Source Name	City	Pb	HCL	NMOC	NOX	PM10	SO2	VOC	Total emissions of fee subject pollutants	Total billable emissions	Total emissions charge	Total facility charge	Total Fee **
B7300	II	RIETH RILEY CONSTRUCTION	MUNRO TWP	0			2	4	0	1	8	7	\$335.65	\$1,795.00	\$2,130.65
B6828	II	U.S. Venture, Inc.	CHEBOYGAN							7	7	7	\$335.65	\$1,795.00	\$2,130.65
N6022	II	RIETH RILEY CONSTRUCTION	BAY SHORE				4	3	0	0	7	7	\$335.65	\$1,795.00	\$2,130.65
N6608	II	RIETH-RILEY CONSTRUCTION	BAY SHORE				4	3	0	0	7	7	\$335.65	\$1,795.00	\$2,130.65
N5842	II	HALLIDAY SAND & GRAVEL PLANT #3	ADA				5	2	0	0	7	7	\$335.65	\$1,795.00	\$2,130.65
B1893	II	ASPHALT PAVING, INC	MUSKEGON	0			2	5	0	0	7	7	\$335.65	\$1,795.00	\$2,130.65
N2952	II	CITY ENVIR SERVICES HASTINGS	HASTINGS			2	1	3	1		7	7	\$335.65	\$1,795.00	\$2,130.65
M4097	II	Marathon Pipe Line LLC	STOCKBRIDGE							7	7	7	\$335.65	\$1,795.00	\$2,130.65
N5183	II	Halliday Sand and Gravel - PLANT #4	ADA				5	2	0	0	7	7	\$335.65	\$1,795.00	\$2,130.65
M4777	II	BASF CORP	WYANDOTTE				1	1	0	5	7	7	\$335.65	\$1,795.00	\$2,130.65
M3641	II	UNIVERSITY OF MICHIGAN FLINT	FLINT	0			6	0	0	0	7	6	\$287.70	\$1,795.00	\$2,082.70
N3519	II	PHARMACIA & UPJOHN COMPANY LLC	RICHLAND	0			6	0	0	0	7	6	\$287.70	\$1,795.00	\$2,082.70
B4311	II	ADM GRAIN CO	OTTAWA LAKE	0			2	4	0	0	7	6	\$287.70	\$1,795.00	\$2,082.70
N3862	II	WEXFORD COUNTY LANDFILL	MANTON			5		1			7	6	\$287.70	\$1,795.00	\$2,082.70
N1737	II	Great Lakes Aggregates Rockwood Quarry	NEWPORT					6			6	6	\$287.70	\$1,795.00	\$2,082.70
B2174	II	BARRETT PAVING MATERIALS INC	ROMULUS	0			2	2	0	2	6	6	\$287.70	\$1,795.00	\$2,082.70
N7151	II	Paul Bechtel Sand and Gravel L.L.C.	BURNSIDE				3	3	0	0	6	6	\$287.70	\$1,795.00	\$2,082.70
N0991	II	Wright Coating Technologies	KALAMAZOO				0	0	0	6	6	6	\$287.70	\$1,795.00	\$2,082.70
N8252	II	BARBER CREEK SAND AND GRAVEL	KENT CITY				5	1	0	0	6	6	\$287.70	\$1,795.00	\$2,082.70
N1336	II	BASF CORPORATION	SOUTHFIELD	0			4	0	0	2	6	6	\$287.70	\$1,795.00	\$2,082.70
N3597	II	STONECO NEWPORT	NEWPORT					6			6	6	\$287.70	\$1,795.00	\$2,082.70
B4265	II	BARRETT PAVING MATERIALS	ANN ARBOR	0			2	3	0	1	5	6	\$287.70	\$1,795.00	\$2,082.70
B4266	II	BARRETT PAVING MATERIALS	MANCHESTER				3	2	0	0	6	5	\$239.75	\$1,795.00	\$2,034.75
K2688	II	B.O.P. FEDERAL CORRECTIONAL INST	MILAN	0			5	0	0	0	6	5	\$239.75	\$1,795.00	\$2,034.75
G5066	II	ST JOSEPH MERCY HOSPITAL	PONTIAC	0			5	0	0	0	6	5	\$239.75	\$1,795.00	\$2,034.75
B4058	II	RIETH RILEY CONSTRUCTION CO., INC.	BAY SHORE				4	1	0	0	6	5	\$239.75	\$1,795.00	\$2,034.75
N6901	II	R SMITH & SONS, INC. - PLANT #1	ALLEGAN				4	1	0	0	6	5	\$239.75	\$1,795.00	\$2,034.75
N7081	II	Ford Motor Co Driveability Test Facility	ALLEN PARK	0			4	0	0	1	6	5	\$239.75	\$1,795.00	\$2,034.75
N6307	II	HALLIDAY SAND & GRAVEL #1 225-97A	ADA				4	1	0	0	6	5	\$239.75	\$1,795.00	\$2,034.75
P0244	II	KGL ASSOCIATES INC	MAYBEE				1	4	0	0	5	5	\$239.75	\$1,795.00	\$2,034.75
M1952	II	ST MARY'S of Michigan	SAGINAW	0			5	0	0	0	5	5	\$239.75	\$1,795.00	\$2,034.75
N8248	II	MONTMORENCY-OSCODA-ALPENA WSTE MGMT	ATLANTA			4		1			5	5	\$239.75	\$1,795.00	\$2,034.75
N3435	II	BALKEMA EXCVATNG/AGGREGATE RSRCS 102	KALAMAZOO				4	1	0	0	5	5	\$239.75	\$1,795.00	\$2,034.75
B4383	II	Kasson Sand and Gravel	MAPLE CITY				3	2	0	0	5	5	\$239.75	\$1,795.00	\$2,034.75
B8860	II	Tesa Tape Inc.	SPARTA				0	0	0	5	5	5	\$239.75	\$1,795.00	\$2,034.75
N6880	II	Carr Brothers & Sons Inc. - Plant 2	ALBION				4	1	0	0	5	5	\$239.75	\$1,795.00	\$2,034.75
N1864	II	NORON COMPOSITE TECHNOLOGIES	GRANT TWP							5	5	5	\$239.75	\$1,795.00	\$2,034.75

Attachment M1 - Michigan Title V Submittal Update - July 2012
Projected 2013 Michigan Fee Billing, Based on 2011 Emissions Data

SRN	Fee Category *	Source Name	City	Pb	HCL	NMOC	NOX	PM10	SO2	VOC	Total emissions of fee subject pollutants	Total billable emissions	Total emissions charge	Total facility charge	Total Fee **
N0888	II	GREEN BAY PACKAGING Kzoo Container.	KALAMAZOO	0			2	0	0	3	5	5	\$239.75	\$1,795.00	\$2,034.75
N6749	II	Carrick Gravel and Crushing	HOUGHTON LAKE				4	1	0	0	5	5	\$239.75	\$1,795.00	\$2,034.75
B4102	II	U S GYPSUM CO	TAWAS CITY				3	2	0	0	5	5	\$239.75	\$1,795.00	\$2,034.75
N6717	II	A LINDBERG & SONS INC #48-99	ISHPEMING					5			5	5	\$239.75	\$1,795.00	\$2,034.75
H6092	II	UNIVAR USA INC. - ROMULUS BRANCH	ROMULUS							5	5	5	\$239.75	\$1,795.00	\$2,034.75
N6883	II	Carr Brothers & Sons Inc. - Plant 1	ALBION				3	1	0	0	5	4	\$191.80	\$1,795.00	\$1,986.80
N6866	II	Georgia Pacific Corrugated LLC III	ALBION	0			3	1	0	0	5	4	\$191.80	\$1,795.00	\$1,986.80
B1608	II	General Motors LLC Flint Metal Center	FLINT				4	0	0	0	5	4	\$191.80	\$1,795.00	\$1,986.80
N5963	II	R E GLANCY INC	TAWAS CITY				3	1	0	0	5	4	\$191.80	\$1,795.00	\$1,986.80
N7375	II	AMERICAN AGGREGATES - SANDVIK CONE	OXFORD				3	1	0	0	5	4	\$191.80	\$1,795.00	\$1,986.80
N7288	II	WEBER SAND & GRAVEL CEDAR RAPIDS	BROWN CITY				3	1	0	0	5	4	\$191.80	\$1,795.00	\$1,986.80
N5569	II	Haworth, Inc. - Big Rapids Components	BIG RAPIDS					1		3	4	4	\$191.80	\$1,795.00	\$1,986.80
B6237	II	YPSILANTI COMM. UTILITIES AUTHORITY	YPSILANTI	0			3	0	1	0	4	4	\$191.80	\$1,795.00	\$1,986.80
M4132	II	Walter P. Reuther Psychiatric Hospital	WESTLAND	0			4	0	0	0	4	4	\$191.80	\$1,795.00	\$1,986.80
N6762	II	Dykema Excavators Inc.	BELMONT				3	1	0	0	4	4	\$191.80	\$1,795.00	\$1,986.80
N6639	II	BYHOLT, INC.	SCHOOLCRAFT					4			4	4	\$191.80	\$1,795.00	\$1,986.80
N6544	II	Servisair Fuel Services LLC	DETROIT							4	4	4	\$191.80	\$1,795.00	\$1,986.80
N6804	II	KLETT RECYCLE, INC.	HARTFORD				3	1	0	0	4	4	\$191.80	\$1,795.00	\$1,986.80
N6874	II	Quantum Composites, inc.	BAY CITY							4	4	4	\$191.80	\$1,795.00	\$1,986.80
K1260	II	OAKWOOD HEALTHCARE	WAYNE	0			4	0	0	0	4	4	\$191.80	\$1,795.00	\$1,986.80
N7391	II	WIEGAND'S CRUSHING, INC.	STERLING HTS				3	1	0	0	4	4	\$191.80	\$1,795.00	\$1,986.80
B2359	II	Birds Eye Foods LLC	FENNVILLE	0			4	0	0	0	4	4	\$191.80	\$1,795.00	\$1,986.80
N6429	II	HALLIDAY SAND & GRAVEL (945 CONE)	ADA				3	1	0	0	4	4	\$191.80	\$1,795.00	\$1,986.80
B6438	II	Gavilon Grain LLC	CARROLLTON				0	4	0	0	4	4	\$191.80	\$1,795.00	\$1,986.80
N6023	II	AMERICAN AGGREGATES MI - HIGHLAND	HIGHLAND					4			4	4	\$191.80	\$1,795.00	\$1,986.80
N7740	II	GERKEN MATERIALS INC	JONESVILLE	0			2	0	1	1	4	4	\$191.80	\$1,795.00	\$1,986.80
N0034	II	MOLDED PLASTIC INDUSTRIES, INC.	HOLT				0	0	0	4	4	4	\$191.80	\$1,795.00	\$1,986.80
B1619	II	MICHIGAN AGRICULTURAL COMMODITIES	BRECKENRIDGE				0	4	0	0	4	4	\$191.80	\$1,795.00	\$1,986.80
N6875	II	T J Fiore Crushed Concrete Inc	STERLING HTS					4			4	4	\$191.80	\$1,795.00	\$1,986.80
N1862	II	CHEM-TREND LP	HOWELL				1	0	0	3	4	4	\$191.80	\$1,795.00	\$1,986.80
N6725	II	A LINDBERG & SONS INC #456-99	PALMER					4			4	4	\$191.80	\$1,795.00	\$1,986.80
M4232	II	Huron Valley - Sinai Hospital	COMMERCE TWP	0			3	0	0	0	4	3	\$143.85	\$1,795.00	\$1,938.85
N5930	II	DELTA COLLEGE	AUBURN	0			3	0	0	0	4	3	\$143.85	\$1,795.00	\$1,938.85
N6385	II	MID MICHIGAN MATERIALS INC	JEDDO				0	3	0	0	4	3	\$143.85	\$1,795.00	\$1,938.85
N7618	II	PAMAR ENTERPRISE INC	NEW HAVEN				2	1	0	0	4	3	\$143.85	\$1,795.00	\$1,938.85
N8273	II	PROVIDENCE PARK HOSPITAL	NOVI	0			3	0	0	0	4	3	\$143.85	\$1,795.00	\$1,938.85
B4134	II	BARRETT PAVING MATERIALS INC	TROY	0			1	1	0	1	4	3	\$143.85	\$1,795.00	\$1,938.85

Attachment M1 - Michigan Title V Submittal Update - July 2012
Projected 2013 Michigan Fee Billing, Based on 2011 Emissions Data

SRN	Fee Category *	Source Name	City	Pb	HCL	NMOC	NOX	PM10	SO2	VOC	Total emissions of fee subject pollutants	Total billable emissions	Total emissions charge	Total facility charge	Total Fee **
M0037	II	MERCY GENERAL HEALTH PARTNERS	MUSKEGON	0			3	0	0	0	4	3	\$143.85	\$1,795.00	\$1,938.85
N7232	II	Carl Schlegel, Inc.	SAINT JOHNS				3	0	0	0	4	3	\$143.85	\$1,795.00	\$1,938.85
N1406		BARRETT PAVING MATERIALS, INC	BURTON	0			1	1	0	1	3	3	\$143.85	\$1,795.00	\$1,938.85
N6432	II	TRI CITY AGGREGATES	OXFORD				2	1	0	0	3	3	\$143.85	\$1,795.00	\$1,938.85
A0402	II	MENASHA PACKAGING COLOMA PLANT	COLOMA	0			2	1	0	0	3	3	\$143.85	\$1,795.00	\$1,938.85
N6913	II	Searles Construction - 45 Plant	SAINT JOHNS				3	0	0	0	3	3	\$143.85	\$1,795.00	\$1,938.85
N6980	II	WMU Energy Resource Center	KALAMAZOO	0			3	0	0	0	3	3	\$143.85	\$1,795.00	\$1,938.85
N7237	II	Ottawa Aggregates Incorporated	GRAND RAPIDS					3			3	3	\$143.85	\$1,795.00	\$1,938.85
A8448	II	Durr Systems, Inc.	PLYMOUTH	0			1	0	0	2	3	3	\$143.85	\$1,795.00	\$1,938.85
B4923	II	STONECO INC	MAYBEE					3			3	3	\$143.85	\$1,795.00	\$1,938.85
N6565	II	STONECO-MOSCOW PLANT DIV 88	MOSCOW					3			3	3	\$143.85	\$1,795.00	\$1,938.85
N5141	II	SPECIFICATION STONE - QUARRY	ALPENA					3			3	3	\$143.85	\$1,795.00	\$1,938.85
N6197	II	AGGREGATE INDUSTRIES AC2 PLANT	KALAMAZOO				2	1	0	0	3	3	\$143.85	\$1,795.00	\$1,938.85
N3512	II	PAYNE & DOLAN INC C21	GLADSTONE					3			3	3	\$143.85	\$1,795.00	\$1,938.85
N1060	II	BASF CORP	LIVONIA				1	0	0	2	3	3	\$143.85	\$1,795.00	\$1,938.85
A4750	II	Ferrous Processing & Trading SLC Recycling	WARREN					3		0	3	3	\$143.85	\$1,795.00	\$1,938.85
B7068	II	GERKEN MATERIALS, INC.	ADRIAN	0			1	1	0	1	3	3	\$143.85	\$1,795.00	\$1,938.85
A3352	II	BARRETT PAVING MATERIALS INC	MOUNT CLEMENS	0			1	1	0	1	3	3	\$143.85	\$1,795.00	\$1,938.85
N6932	II	Fonson, Inc.	GREEN OAK TWP					3			3	3	\$143.85	\$1,795.00	\$1,938.85
N5437	II	STONECO-ZEEB RD	ANN ARBOR					3			3	3	\$143.85	\$1,795.00	\$1,938.85
N6652	II	Stoneco Inc., South Kent Gravel	WAYLAND					3			3	3	\$143.85	\$1,795.00	\$1,938.85
N6416	II	MIDWAY AGGREGATES	CLIMAX					3			3	3	\$143.85	\$1,795.00	\$1,938.85
N7385	II	K & K CRUSHING AND LEASING	GRAND HAVEN				2	1	0	0	2	3	\$143.85	\$1,795.00	\$1,938.85
N6705	II	HUBSCHER & SON - CEDARAPIDS 443	MOUNT PLEASNT				2	1	0	0	2	3	\$143.85	\$1,795.00	\$1,938.85
N6306	II	Hanlee Equipment LLC	SANFORD				2	0	0	0	3	2	\$95.90	\$1,795.00	\$1,890.90
N5466	II	RIETH RILEY CONSTRUCTION CO INC	TRAVERSE CITY	0			1	1	0	0	3	2	\$95.90	\$1,795.00	\$1,890.90
N6914	II	Searles Construction - Wash Plant	SAINT JOHNS				2	0	0	0	3	2	\$95.90	\$1,795.00	\$1,890.90
N7518	II	HERITAGE RESOURCES INC.	BELLEVUE				1	1	0	0	2	2	\$95.90	\$1,795.00	\$1,890.90
N2454	II	Wolverine Hardwoods Inc.	ALLEGAN	0			1	1	0	0	2	2	\$95.90	\$1,795.00	\$1,890.90
N6569	II	PAYNE & DOLAN INC C34	GLADSTONE					2			2	2	\$95.90	\$1,795.00	\$1,890.90
B3019	II	QUALITY SPRING TOGO INC	COLDWATER							2	2	2	\$95.90	\$1,795.00	\$1,890.90
K2729	II	BOTSFORD HOSPITAL	FARMINGTN HLS	0			2	0	0	0	2	2	\$95.90	\$1,795.00	\$1,890.90
N8087	II	Lewiston Sand and Gravel	ATLANTA				2	0	0	0	2	2	\$95.90	\$1,795.00	\$1,890.90
N3418	II	JAYCOR, INC	BELDING							2	2	2	\$95.90	\$1,795.00	\$1,890.90
A0098	II	EVERETT GOODRICH TRUCKING INC	ALPENA	0			1	1	0	0	2	2	\$95.90	\$1,795.00	\$1,890.90
B5282	II	Knappen Milling Company	AUGUSTA					2			2	2	\$95.90	\$1,795.00	\$1,890.90
B6114	II	AGGREGATE RESOURCES	GALESBURG					2			2	2	\$95.90	\$1,795.00	\$1,890.90

Attachment M1 - Michigan Title V Submittal Update - July 2012
Projected 2013 Michigan Fee Billing, Based on 2011 Emissions Data

SRN	Fee Category *	Source Name	City	Pb	HCL	NMOC	NOX	PM10	SO2	VOC	Total emissions of fee subject pollutants	Total billable emissions	Total emissions charge	Total facility charge	Total Fee **
N1363	II	BACCO CONSTRUCTION CO PLANT 25	IRON MOUNTAIN					2			2	2	\$95.90	\$1,795.00	\$1,890.90
N3605	II	KING MILLING CO	LOWELL					2			2	2	\$95.90	\$1,795.00	\$1,890.90
N6851	II	Parker Excavating Gravel & Recycle Inc	COOPERSVILLE				2	0	0	0	2	2	\$95.90	\$1,795.00	\$1,890.90
B5579	II	BRANCH COUNTY ROAD COMMISSION	COLDWATER	0			0	2	0	0	2	2	\$95.90	\$1,795.00	\$1,890.90
N1588	II	Searles Construction - 36 Plant	SAINT JOHNS				2	0	0	0	2	2	\$95.90	\$1,795.00	\$1,890.90
N5435	II	ROUND LAKE SAND & GRAVEL	ADDISON					2			2	2	\$95.90	\$1,795.00	\$1,890.90
N6439	II	SAGINAW ASPHALT COMPANY PLANT 10	WATERTOWN TWP	0			1	0	0	1	2	2	\$95.90	\$1,795.00	\$1,890.90
N1237	II	GEORGIA PACIFIC CHEMICALS LLC	GRAYLING	0			1	0	0	1	2	2	\$95.90	\$1,795.00	\$1,890.90
B6451	II	BACCO CONSTRUCTION CO PLANT 12	IRON MOUNTAIN					2			2	2	\$95.90	\$1,795.00	\$1,890.90
N2133	II	BUNTING SAND & GRAVEL PRODUCTS	WEST BRANCH					2			2	2	\$95.90	\$1,795.00	\$1,890.90
B5162	II	XCEL STEEL PICKLING	DEARBORN	0			2	0	0	0	2	2	\$95.90	\$1,795.00	\$1,890.90
N5408	II	THOMPSON RECYCLE CO	ADRIAN					2			2	2	\$95.90	\$1,795.00	\$1,890.90
M3833	II	ROUSH MANUFACTURING Building 28	LIVONIA							2	2	2	\$95.90	\$1,795.00	\$1,890.90
E2842	II	CONSUMERS CONCRETE CORP	KALAMAZOO	0			0	2	0	0	2	2	\$95.90	\$1,795.00	\$1,890.90
N5587	II	WOODARD-CM	OWOSSO					0	0	2	2	2	\$95.90	\$1,795.00	\$1,890.90
B6034	II	MARKWEST-MICHIGAN PIPELINE	LEWISTON							2	2	2	\$95.90	\$1,795.00	\$1,890.90
N6044	II	AGGREGATE INDUSTRIES BATTLE CREEK	BATTLE CREEK					2			2	2	\$95.90	\$1,795.00	\$1,890.90
C5704	II	Lakeland Medical Center)	SAINT JOSEPH	0			2	0	0	0	2	2	\$95.90	\$1,795.00	\$1,890.90
N3849	II	STONECO INC DENNISTON QUARRY	MONROE					2			2	2	\$95.90	\$1,795.00	\$1,890.90
N8316	II	MID-MICHIGAN CRUSHING & RECYCLING	HIGHLAND PARK					2			2	2	\$95.90	\$1,795.00	\$1,890.90
B5237	II	PAYNE & DOLAN INC C17	MARQUETTE					2			2	2	\$95.90	\$1,795.00	\$1,890.90
N2877	II	PAYNE & DOLAN INC C19	HANCOCK TWP					2			2	2	\$95.90	\$1,795.00	\$1,890.90
N7168	II	TelSmith 52G Portable Crusher.	SAGINAW				1	0	0	0	2	1	\$47.95	\$1,795.00	\$1,842.95
N6704	II	HUBSCHER & SON - PIONEER 50VE	MOUNT PLEASNT				1	0	0	0	2	1	\$47.95	\$1,795.00	\$1,842.95
N7011	II	Grosso Trucking and Supply Company	FAIR HAVEN				1	0	0	0	2	1	\$47.95	\$1,795.00	\$1,842.95
N5748	II	ELMER'S CRANE AND DOZER, INC.	TRAVERSE CITY				1	0	0	0	2	1	\$47.95	\$1,795.00	\$1,842.95
N5436	II	AGGREGATE INDUSTRIES - CHELSEA	GRASS LAKE				0	1	0	0	2	1	\$47.95	\$1,795.00	\$1,842.95
A4697	II	NAGLE PAVING COMPANY	LIVONIA					1			1	1	\$47.95	\$1,795.00	\$1,842.95
N6657	II	Grand Rapids Gravel Company	JENISON					1			1	1	\$47.95	\$1,795.00	\$1,842.95
B3534	II	EDW. C. LEVY PLANT 2 CRUSHER	DEARBORN				1	0	0	0	1	1	\$47.95	\$1,795.00	\$1,842.95
N5284	II	GRAND RAPIDS GRAVEL CO.	PLAINFLD TWP					1			1	1	\$47.95	\$1,795.00	\$1,842.95
N6721	II	A LINDBERG & SONS INC #83-99	ISHPEMING					1			1	1	\$47.95	\$1,795.00	\$1,842.95
N6605	II	PAYNE & DOLAN INC PC5 CRUSHER	OZARK					1			1	1	\$47.95	\$1,795.00	\$1,842.95
N6848	II	Parker Excavating Gravel & Recycling Inc	MIDDLEVILLE				1	0	0	0	1	1	\$47.95	\$1,795.00	\$1,842.95
N6590	II	R H HUHTALA AGGREGATES INC #75-01	LANSE					1			1	1	\$47.95	\$1,795.00	\$1,842.95
N7171	II	Porath Sand and Gravel	HOUGHTON LAKE					1			1	1	\$47.95	\$1,795.00	\$1,842.95
N6588	II	BALKEMA EXCAVATING 4TH ST AGGREGATES	SCHOOLCRAFT					1			1	1	\$47.95	\$1,795.00	\$1,842.95

Attachment M1 - Michigan Title V Submittal Update - July 2012
Projected 2013 Michigan Fee Billing, Based on 2011 Emissions Data

SRN	Fee Category *	Source Name	City	Pb	HCL	NMOC	NOX	PM10	SO2	VOC	Total emissions of fee subject pollutants	Total billable emissions	Total emissions charge	Total facility charge	Total Fee **
N5477	II	R E GLANCY INC	TAWAS CITY				1	0	0	0	1	1	\$47.95	\$1,795.00	\$1,842.95
N6448	II	MANTHEI DEVELOPMENT/MDC CONTRCTNG	CHARLEVOIX				1	0	0	0	1	1	\$47.95	\$1,795.00	\$1,842.95
N7436	II	Shook Asphalt Co. Inc.	GREENVILLE	0			0	1	0	0	1	1	\$47.95	\$1,795.00	\$1,842.95
N6957	II	Halliday Sand & Gravel 6000 CONE PLANT	ADA				1	0	0	0	1	1	\$47.95	\$1,795.00	\$1,842.95
N6338	II	TRI CITY AGGREGATES	MILLINGTON				1	0	0	0	1	1	\$47.95	\$1,795.00	\$1,842.95
N2657	II	PAYNE & DOLAN INC C28	GLADSTONE					1			1	1	\$47.95	\$1,795.00	\$1,842.95
N3152	II	AMERICAN AGGREGATES OF MI ELJAY 54	MILFORD				1	0	0	0	1	1	\$47.95	\$1,795.00	\$1,842.95
N1320	II	MICHIGAN GYPSUM CO	WHITTEMORE					1			1	1	\$47.95	\$1,795.00	\$1,842.95
N6703	II	HUBSCHER & SON - DEERFIELD PLANT	DEERFIELD TWP					1			1	1	\$47.95	\$1,795.00	\$1,842.95
N6595	II	Kalin Construction Co Inc	SODUS					1			1	1	\$47.95	\$1,795.00	\$1,842.95
B1851	II	RIETH RILEY CONSTRUCTION CO INC	LUDINGTON	0			0	1	0	0	1	1	\$47.95	\$1,795.00	\$1,842.95
N7595	II	R SMITH AND SONS INC	ALLEGAN				1	0	0	0	1	1	\$47.95	\$1,795.00	\$1,842.95
B5240	II	PAYNE & DOLAN INC C16	GLADSTONE					1			1	1	\$47.95	\$1,795.00	\$1,842.95
B9131	II	BUCKEYE TERMINALS-JACKSON	JACKSON							1	1	1	\$47.95	\$1,795.00	\$1,842.95
N5224	II	Terry Asphalt Materials Inc.	ALMA				0	0	0	1	1	1	\$47.95	\$1,795.00	\$1,842.95
N6931	II	Tanks R Us	NILES							1	1	1	\$47.95	\$1,795.00	\$1,842.95
N6655	II	MOTTES MATERIALS #355-99 PC7	MENOMINEE					1			1	1	\$47.95	\$1,795.00	\$1,842.95
N5720	II	CHENEY LIMESTONE CO	BELLEVUE					1			1	1	\$47.95	\$1,795.00	\$1,842.95
B6035	II	MarkWest MI Pipeline Junction Terminal	JOHANNESBURG							1	1	1	\$47.95	\$1,795.00	\$1,842.95
N6220	II	DOME PETROLEUM CORPORATION	RAPID RIVER				1	0	0	0	1	1	\$47.95	\$1,795.00	\$1,842.95
N6341	II	TRI CITY AGGREGATES	HOLLY				1	0	0	0	1	1	\$47.95	\$1,795.00	\$1,842.95
N6722	II	A LINDBERG & SONS INC #419-99	MARQUETTE					1			1	1	\$47.95	\$1,795.00	\$1,842.95
M3333	II	Conway Products d/b/a Emerald Spa	KENTWOOD							1	1	1	\$47.95	\$1,795.00	\$1,842.95
M3733	II	Great Lakes Aggregates Highland Park	HIGHLAND PARK					1			1	1	\$47.95	\$1,795.00	\$1,842.95
N5760	EP	Wolverine Power Supply - Hersey	HERSEY				1	0	0	0	1	1	\$47.95	\$1,795.00	\$1,842.95
N6046	II	AGGREGATE INDUSTRIES WAYLAND	MIDDLEVILLE					1			1	1	\$47.95	\$1,795.00	\$1,842.95
N7918	II	GENE BROW AND SONS INC #369-07	SAULT S MARIE					1			1	1	\$47.95	\$1,795.00	\$1,842.95
P0240	II	GERKEN MATERIALS HILLSDALE	WALDRON					1			1	1	\$47.95	\$1,795.00	\$1,842.95
P0197	II	BIERLEIN COMPANIES INC	MIDLAND				1	0	0	0	1	1	\$47.95	\$1,795.00	\$1,842.95
N6665	II	AGGREGATE INDUSTRIES EDWARDSBURG	NILES					1			1	1	\$47.95	\$1,795.00	\$1,842.95
N6573	II	Novi Crushed Concrete	NOVI					1			1	1	\$47.95	\$1,795.00	\$1,842.95
N1331	II	Great Lakes Aggregates, Sherwood Plant	WARREN					1			1	1	\$47.95	\$1,795.00	\$1,842.95
N6667	II	R WELLS CONTRACTING CORP #382-99	GLADSTONE					1			1	1	\$47.95	\$1,795.00	\$1,842.95
N5585	II	FISHER SAND AND GRAVEL CO	MOUNT PLEASNT					1			1	1	\$47.95	\$1,795.00	\$1,842.95
N1333	II	Great Lakes Aggregates, Crooks Road	ROCHESTER HLS					1			1	1	\$47.95	\$1,795.00	\$1,842.95
N7919	II	GENE BROW AND SONS INC #371-07	FIBRE					1			1	1	\$47.95	\$1,795.00	\$1,842.95
N7758	II	NORTHSTAR CRUSHING & SCREENING	IRON MOUNTAIN					1			1	1	\$47.95	\$1,795.00	\$1,842.95

Attachment M1 - Michigan Title V Submittal Update - July 2012
Projected 2013 Michigan Fee Billing, Based on 2011 Emissions Data

SRN	Fee Category *	Source Name	City	Pb	HCL	NMOC	NOX	PM10	SO2	VOC	Total emissions of fee subject pollutants	Total billable emissions	Total emissions charge	Total facility charge	Total Fee **
B4686	II	Great Lakes Aggregates, Taylor plant	TAYLOR					1			1	1	\$47.95	\$1,795.00	\$1,842.95
N8249	II	MATHY CONSTRUCTION CO PLANT 67	IRONWOOD					1			1	1	\$47.95	\$1,795.00	\$1,842.95
N7179	II	NAGLE RECYCLING CO	LIVONIA					1			1	1	\$47.95	\$1,795.00	\$1,842.95
N6997	II	GLACIAL SAND & GRAVEL	JONESVILLE					1			1	1	\$47.95	\$1,795.00	\$1,842.95
N6850	II	Parker Excavating Gravel & Recycle Inc	KENT CITY				1	0	0	0	1	1	\$47.95	\$1,795.00	\$1,842.95
N6718	II	A LINDBERG & SONS INC #113-99	IRON MOUNTAIN					1			1	1	\$47.95	\$1,795.00	\$1,842.95
N5819	II	ELMER'S CRANE AND DOZER, INC.	MAPLE CITY					1			1	1	\$47.95	\$1,795.00	\$1,842.95
N7914	II	NGC TAWAS QUARRY	NATIONAL CITY					1			1	1	\$47.95	\$1,795.00	\$1,842.95
N3655	II	Bronson Battle Creek	BATTLE CREEK	0			1	0	0	0	1	1	\$47.95	\$1,795.00	\$1,842.95
M4685	II	DETROIT SALT CO	DETROIT					1			1	1	\$47.95	\$1,795.00	\$1,842.95
N6702	II	HUBSCHER & SON ASPHALT PRODUCTS	MOUNT PLEASNT					1			1	1	\$47.95	\$1,795.00	\$1,842.95
D0066	II	BICHLER GRAVEL & CONCRETE CO	ESCANABA					1			1	1	\$47.95	\$1,795.00	\$1,842.95
N3451	II	S. A. TORELLO INC.	PORT HURON					1			1	1	\$47.95	\$1,795.00	\$1,842.95
B6563	II	DETROIT RECYCLED CONCRETE	DETROIT					1			1	1	\$47.95	\$1,795.00	\$1,842.95
N7733	II	MILESTONE MATERIALS INC #360-06	IRONWOOD					1			1	1	\$47.95	\$1,795.00	\$1,842.95
N6453	II	ELMER'S CRANE AND DOZER, INC.	TRAVERSE CITY				0	0	0	0	1	0	\$0.00	\$1,795.00	\$1,795.00
N7730	II	HERITAGE RESOURCES INC	BELLEVUE				0	0	0	0	1	0	\$0.00	\$1,795.00	\$1,795.00
N7052	II	ELMER'S CRANE AND DOZER, INC.	TRAVERSE CITY				0	0	0	0	1	0	\$0.00	\$1,795.00	\$1,795.00
N6750	II	ELMER'S CRANE AND DOZER, INC.	TRAVERSE CITY				0	0	0	0	1	0	\$0.00	\$1,795.00	\$1,795.00
M2654	II	MANISTIQUE RENTALS INC #129-00	MANISTIQUE					0			0	0	\$0.00	\$1,795.00	\$1,795.00
N3171	II	STATE CRUSHING INC	AUBURN HILLS					0			0	0	\$0.00	\$1,795.00	\$1,795.00
B5440	II	SUPERIOR SAND & GRAVEL #452-99	HANCOCK					0			0	0	\$0.00	\$1,795.00	\$1,795.00
N7688	II	United Solar Ovonc	GREENVILLE				0	0	0	0	0	0	\$0.00	\$1,795.00	\$1,795.00
N6640	II	CON AGG INC #243-99	SAULT S MARIE					0			0	0	\$0.00	\$1,795.00	\$1,795.00
N5347	II	HOLLY SAND & GRAVEL	DAVISBURG					0			0	0	\$0.00	\$1,795.00	\$1,795.00
M4099	II	WOLVERINE PIPELINE - FARWELL	FARWELL							0	0	0	\$0.00	\$1,795.00	\$1,795.00
P0232	II	KALIN CONSTRUCTION	SODUS					0			0	0	\$0.00	\$1,795.00	\$1,795.00
N7035	II	Carl Schlegel Inc.	LANSING					0			0	0	\$0.00	\$1,795.00	\$1,795.00
N6430	II	HALLIDAY SAND AND GRAVEL	ADA				0	0	0	0	0	0	\$0.00	\$1,795.00	\$1,795.00
N6614	II	KALIN CONSTRUCTION CO. INC.	SODUS					0			0	0	\$0.00	\$1,795.00	\$1,795.00
N6355	II	R.E. GLANCY, INC.	TAWAS CITY				0	0	0	0	0	0	\$0.00	\$1,795.00	\$1,795.00
P0167	II	Cardinal Aggregates	YPSILANTI					0			0	0	\$0.00	\$1,795.00	\$1,795.00
N2399	II	WEST MICHIGAN RECYCLE INC	GRANDVILLE					0			0	0	\$0.00	\$1,795.00	\$1,795.00
N7837	II	ELMER'S CRANE AND DOZER, INC.	TRAVERSE CITY				0	0	0	0	0	0	\$0.00	\$1,795.00	\$1,795.00
N6541	II	PITLIK & WICK INC #483-99	WATERSMEET					0			0	0	\$0.00	\$1,795.00	\$1,795.00
B1581	II	MIDWEST GRAVEL INC	IRON MOUNTAIN					0			0	0	\$0.00	\$1,795.00	\$1,795.00
N1332	II	Mackenzie Crushing LLC	FLINT					0			0	0	\$0.00	\$1,795.00	\$1,795.00

Attachment M1 - Michigan Title V Submittal Update - July 2012
Projected 2013 Michigan Fee Billing, Based on 2011 Emissions Data

SRN	Fee Category *	Source Name	City	Pb	HCL	NMOC	NOX	PM10	SO2	VOC	Total emissions of fee subject pollutants	Total billable emissions	Total emissions charge	Total facility charge	Total Fee **
N6959	II	QUINCY AGGREGATE RESOURCES	QUINCY					0			0	0	\$0.00	\$1,795.00	\$1,795.00
N6661	II	Moose Lake Aggregates, LLC	NILES					0			0	0	\$0.00	\$1,795.00	\$1,795.00
N6706	II	HUBSCHER & SON - HP200	MOUNT PLEASNT					0			0	0	\$0.00	\$1,795.00	\$1,795.00
N2532	II	PITSCH WRECKING CONCRETE RECYCLING	WALKER					0			0	0	\$0.00	\$1,795.00	\$1,795.00
N6358	EP	DETROIT THERMAL HENRY HEATING	DETROIT	0			0	0	0	0	0	0	\$0.00	\$1,795.00	\$1,795.00
N6459	II	BIEHL EXCAVATING INC #162-98	SAGOLA TWP					0			0	0	\$0.00	\$1,795.00	\$1,795.00
N6903	II	R SMITH & SONS - PLANT #2/STURGIS	ALLEGAN					0			0	0	\$0.00	\$1,795.00	\$1,795.00
N5974	II	FISHER SAND AND GRAVEL CO INC	HARRISON					0			0	0	\$0.00	\$1,795.00	\$1,795.00
B3012	EP	DETROIT THERMAL BLVD HEATING	DETROIT	0			0	0	0	0	0	0	\$0.00	\$1,795.00	\$1,795.00
N7858	II	TRI CITY AGGREGATES	BURTON					0			0	0	\$0.00	\$1,795.00	\$1,795.00
N7801	II	THOMAS J MOYLE JR INC #160-07	HANCOCK					0			0	0	\$0.00	\$1,795.00	\$1,795.00
P0156	II	Fisher Sand and Gravel Co	MIDLAND					0			0	0	\$0.00	\$1,795.00	\$1,795.00
N6912	II	DUFFEK SAND & GRAVEL INC	CHAMPION					0			0	0	\$0.00	\$1,795.00	\$1,795.00
N8155	II	BOND CRUSHED CONCRETE	BANGOR TWP					0			0	0	\$0.00	\$1,795.00	\$1,795.00
P0209	II	HOFFMAN BROTHERS	BATTLE CREEK					0			0	0	\$0.00	\$1,795.00	\$1,795.00
N6910	II	Searles Construction - Extec Plant	SAINT JOHNS				0	0	0	0	0	0	\$0.00	\$1,795.00	\$1,795.00
N6825	II	JOHN BRACKETT #164-00	IRONWOOD					0			0	0	\$0.00	\$1,795.00	\$1,795.00
N6902	II	R SMITH & SONS - SOUTHWEST GRAVEL	ALLEGAN					0			0	0	\$0.00	\$1,795.00	\$1,795.00
N8329	II	HAVELKA CONSTRUCTION	WALLACE					0			0	0	\$0.00	\$1,795.00	\$1,795.00
N6849	II	Parker Excavating Gravel & Recycle Inc	KENT CITY				0	0	0	0	0	0	\$0.00	\$1,795.00	\$1,795.00
N6325	II	CHAMPAGNE & MARX EXC INC	SAGINAW					0			0	0	\$0.00	\$1,795.00	\$1,795.00
N3312	II	BREWER SAND & GRAVEL	HOLLAND					0			0	0	\$0.00	\$1,795.00	\$1,795.00
N6507	II	ELMER'S CRANE & DOZER, INC.	ELLSWORTH					0			0	0	\$0.00	\$1,795.00	\$1,795.00
B1982	II	Louis Padnos Iron & Metal	HOLLAND					0		0	0	0	\$0.00	\$1,795.00	\$1,795.00
N1594	II	RIETH RILEY CONSTRUCTION CO, INC.	SAINT JAMES	0									\$0.00	\$1,795.00	\$1,795.00
N5282	II	Fiber-Tech Industries, Inc.	CADILLAC										\$0.00	\$1,795.00	\$1,795.00
N7659	II	Crystal Aggregates, LLC	COPEMISH										\$0.00	\$1,795.00	\$1,795.00
B9050	II	BUCKEYE TERMINALS - DETROIT TAYLOR	TAYLOR										\$0.00	\$1,795.00	\$1,795.00
N5861	II	CUL-MAC INDUSTRIES INC	WAYNE										\$0.00	\$1,795.00	\$1,795.00
N6427	II	HALLIDAY SAND AND GRAVEL	ADA										\$0.00	\$1,795.00	\$1,795.00
N6548	II	OTTAWA AGGREGATES INC	GRAND RAPIDS										\$0.00	\$1,795.00	\$1,795.00
N7230	II	Cordes Trenching 1 Inc.	COMSTOCK PARK										\$0.00	\$1,795.00	\$1,795.00
B1739	II	RIETH-RILEY CONSTRUCTION CO., INC.	GRAND RAPIDS	0									\$0.00	\$1,795.00	\$1,795.00
B6447	II	Great Lakes Aggregates Dense Graded Jaw	S ROCKWOOD										\$0.00	\$1,795.00	\$1,795.00
N2204	II	MARATHON PIPE LINE LLC	CHELSEA										\$0.00	\$1,795.00	\$1,795.00
B2903	II	MICHIGAN PAVING & MATERIALS CO.	GALESBURG	0									\$0.00	\$1,795.00	\$1,795.00
N6589	II	BALKEMA EXCAVATING, INC. -- PLANT 101	KALAMAZOO										\$0.00	\$1,795.00	\$1,795.00

**Attachment M1 - Michigan Title V Submittal Update - July 2012
 Projected 2013 Michigan Fee Billing, Based on 2011 Emissions Data**

SRN	Fee Category *	Source Name	City	Pb	HCL	NMOC	NOX	PM10	SO2	VOC	Total emissions of fee subject pollutants	Total billable emissions	Total emissions charge	Total facility charge	Total Fee **
N7390	II	BALKEMA EXCAVATING INC.-PLANT 104	KALAMAZOO										\$0.00	\$1,795.00	\$1,795.00
N6659	II	Stoneco Inc., South Kent Gravel Inc	WAYLAND										\$0.00	\$1,795.00	\$1,795.00
N7361	II	LES MILLER & SONS AGGREGATES, INC.	SAINT JOHNS										\$0.00	\$1,795.00	\$1,795.00
N7737	II	ZITO CONSTRUCTION CO	BURTON										\$0.00	\$1,795.00	\$1,795.00
N6533	II	CARLO CONSTRUCTION	BURNSIDE										\$0.00	\$1,795.00	\$1,795.00
B2284	II	Cadillac Asphalt, L.L.C.	WHITMORE LAKE	0									\$0.00	\$1,795.00	\$1,795.00
B9205	II	Marathon Petroleum Company -Wilder Rd	BAY CITY										\$0.00	\$1,795.00	\$1,795.00
N2207	II	Enbridge Energy, Limited Partnership	BAY CITY										\$0.00	\$1,795.00	\$1,795.00
N1596	II	SAGINAW ASPHALT COMPANY - PLANT 2	SAGINAW	0									\$0.00	\$1,795.00	\$1,795.00
M4100	II	WOLVERINE PIPE LINE - BAY CITY	BAY CITY										\$0.00	\$1,795.00	\$1,795.00
N5488	II	BIERLEIN DEMOLITION CONTRACT	MIDLAND										\$0.00	\$1,795.00	\$1,795.00
N0139	II	HESS ASPHALT PAVING	CLYDE TWP										\$0.00	\$1,795.00	\$1,795.00
N6715	II	A LINDBERG & SONS INC #119-99	ISHPEMING										\$0.00	\$1,795.00	\$1,795.00
N7162	II	R WELLS CONTRACTING CORP #174-02	GLADSTONE										\$0.00	\$1,795.00	\$1,795.00
N6606	II	BIEHL EXCAVATING INC #129-99	CORNELL										\$0.00	\$1,795.00	\$1,795.00
					7525	2819	128979	11,380	265,349	16,149	435645	150,046	\$7,194,705.70	\$2,548,700.00	\$9,743,405.70
* Fee Categories															
	Category I = Major for NOx, PM-10, SO2, VOCs, lead & HAPs:			Facility fee = \$4,485											
	Category II = Section 112 major sources & NSPS:			Facility fee = \$1,795											
	PLUS														
	Emission fee for Category I and II:														
	Dollars per ton:			\$47.95 / ton for billable emissions											
	Limit for total billable tons:			4000 tons per facility											
	Limit for each pollutant if total is below limit for total billable tons:			1000 tons per facility											
	EP = Category I or II Electric Provider; Electric Provider is defined under PA 295 of 2008														
	Standard Category I and II facility and emissions fees, with the following exceptions:														
	-- If an EP emits < 5,250 tons, the maximum fee is 1,250 per fee-subject pollutant														
	-- A cap of 5,250 tons per facility, which results in a maximum emission fee of \$251,737.50														
	MU = Municipal Electric Generating Facilities														
	-- A set fee for MU that emits > 730 tons but < 5,250 tons = \$37,000														
	-- A set fee for MU that emits > 5,230 tons but < 12,000 tons = \$127,000														



MICHIGAN DEPARTMENT OF ENVIRONMENTAL QUALITY

2011 Description of Annual Air Quality Fee Calculations

The owner or operator of each fee-subject facility shall pay air quality fees as required by Part 55, Air Pollution Control, of the Natural Resources and Environmental Protection Act, 1994 PA 451, as amended (Act 451). Fee-subject facilities include all sources as defined in Section 5501 of Act 451. The general equation for the fee calculation is:

$$\text{Annual Air Quality Fee} = \text{Facility Charge} + \text{Emission Charge}$$

Note: There are special fee structures for municipal electric generating facilities (MU) and electric providers (EP), as defined under the Clean, Renewable and Efficient Energy Act, PA 295 of 2008. See below.

Facility Charge

The facility charge is an annual flat-rate fee based on the facility category. Facility categories are described as follows:

- **Category I Facility**

This is a major source as defined under Section 302 of the federal Clean Air Act (CAA). A source that has the potential to emit 100 tons per year of any regulated air pollutant, including oxides of nitrogen (NO_x), particulate matter (PM-10), sulfur dioxide (SO₂), volatile organic compounds (VOCs), carbon monoxide (CO), lead (Pb) and hazardous air pollutants (HAPs), is a Category I facility.

The facility charge for a Category I facility is \$4,485. Therefore, the annual air quality fee for a Category I facility is \$4,485 plus the emissions charge.

- **Category II Facility**

This is a major source as defined under Section 112 of the CAA. A Category II facility has the potential to emit 10 tons per year of any single HAP, or 25 tons per year of any combination of HAPs. A Category II facility is also any facility that is subject to the requirements of Section 111 of the CAA, even if it is not a major source. These are facilities that are subject to the federal New Source Performance Standards (NSPS).

The facility charge for a Category II facility is \$1,795. Therefore, the annual air quality fee for a Category II facility is \$1,795 plus the emissions charge.

A Category II facility that also meets the definition of a Category I facility is classified as a Category I facility.

Attachment M2 - Michigan Title V Submittal Update – July 2012

- **Category III Facility**

This is a fee-subject facility, as defined under Section 5501 of Act 451, that is not a Category I nor a Category II facility. It is subject to a federal Maximum Available Control Technology (MACT) standard but not "major" under Title I or Title III.

The annual air quality fee for a Category III facility is \$250. There is no emissions charge for Category III facilities. Currently, degreasing, chrome plating, and dry cleaning operations, that are not located at Category I or Category II facilities, are classified as Category III facilities.

Emissions Charge

The emissions charge is \$47.95 for each ton of billable emissions. The billable emissions tonnage is based on the facility's actual emissions calculated for the calendar year two (2) years preceding the year of the billing. Therefore, the March 2012 invoice is based on actual emissions for the 2010 calendar year.

The billable emissions for a facility are equal to its actual emissions of fee-subject air pollutants with the following limitations:

For Category I and II facilities which are not EP or MU sources, a maximum of 4,000 tons total per facility is subject to the charge. At \$47.95 per ton, that means that the maximum emissions charge is \$191,800.

When the total actual emission of fee-subject air pollutants at the facility is less than 4,000 tons, the facility will be charged for a maximum of 1,000 tons per pollutant.

Municipal Electric Generating (MU) Facilities

For MU facilities, the following fees are charged:

- For sources that emit at least 730 but less than 5,250 tons -- \$37,000
- For sources that emit at least 5,230 but not more than 12,000 tons -- \$127,000

Electric Provider (EP) Sources

For Category I and II facilities that are EP sources, the standard facility fee applies. The standard emission fee of \$47.95 per ton applies, with the following exceptions:

A maximum of 5,250 tons per facility is subject to the charge. The maximum emission charge is \$251,737.50 for any one EP facility.

If an EP facility has less than 5,250 tons of actual emissions the maximum amount subject to the fee is 1,250 tons per fee-subject pollutant.

Fee-subject air pollutants include NO_x, PM-10, SO₂, VOCs, ozone, Pb, and any pollutant regulated under Section 111 (Standards of Performance for New Stationary Sources) or 112 (Hazardous Air Pollutants) of Part A of Title I of the federal Clean Air Act, or Title III (Hazardous Air Pollutants) of the federal Clean Air Act. Carbon monoxide is not a fee-subject air pollutant.

Attachment M3 - Michigan Title V Submittal Update – July 2012

MICHIGAN DEPARTMENT OF ENVIRONMENTAL QUALITY AIR QUALITY DIVISION ANNUAL PROGRAM REPORT - FISCAL YEAR 2011

This year-end report from the Department of Environmental Quality (DEQ), Air Quality Division (AQD), is required to detail Emissions Control Fund appropriations. The information is organized as directed by Section 5522(8) of Part 55, Air Pollution Control, of the Natural Resources and Environmental Protection Act, 1994 PA 451, as amended (Act 451).

A) A total of 115 full-time equated positions performed enforcement, compliance, and permitting activities. From that total, 58 full-time equated positions performed these activities in the Title V Program as defined in Section 5501 of Act 451. The other 57 full-time equated positions performed enforcement, compliance, and permitting activities in the non-Title V Program.

B) Permits to Install:

i. There were 411 permit-to-install applications received in fiscal year (FY) 2011.

ii.

Permits to Install - Final Actions	Total Number
Final action taken on applications and permits.	970
Applications approved.	391
Applications denied.	3
Applications and permits voided (35 of which were due to issuance of Renewable Operating Permits).	576

iii.

Approved Permits to Install	Total Number
Number required to complete public participation before final action.	22
Number not required to complete public participation before final action.	369

iv. The average number of final permit actions per reviewer (full-time equated) is 44.

Permits to Install		Percentage	Total Number
v.	Applications reviewed for administrative completeness within 10 days of receipt by the DEQ.	93%	383
vi.	Applications reviewed for technical completeness within 30 days of receipt by the DEQ.	92%	377
vii.	Applications submitted to the DEQ that were administratively complete as received.	91%	373
viii.	Applications for which a final approval was taken within 60 days of receipt of a technically complete application for those not required to complete public participation or within 120 days if public participation was required.	91%	356

Attachment M3 - Michigan Title V Submittal Update – July 2012

C) Renewable Operating Permit (ROP) Program:

i. A total of 62 ROP applications were received in FY 2011.

ii.

ROP - Final Actions	Total Number
Final action taken on ROP applications.	56
Applications approved.	5
Applications denied.	0
Applications voided (withdrawn by the applicant).	1

ROP	Percentage	Total Number
iii. Permit applications initially processed within the required time.	100%	5
iv. Permit renewals processed within the required time.	59%	26
Permit modifications processed within the required time.	0%	0*
v. Permit applications reopened by the DEQ.	0%	0
vi. General permits issued by the DEQ.	n/a	n/a

* NOTE: Due to a focus on assessments for multiple coal-fired power projects, support staff was unable to finalize draft ROPs and send them to the U.S. Environmental Protection Agency for the 45-day review. Of the 62 applications received, 5 were approved, 1 was voided, and 0 are on hold to be incorporated into the ROP at renewal. Due to a reduction in force (RIF), permit modifications were not processed in FY 2011 unless they were part of a renewal application. Beginning in February 2012, ROP modifications have once again begun to be processed independently of an ROP renewal.

D) There were 401 Violation Notices sent during FY 2011.

E) Penalty money collected from all consent orders and judgments was \$122,410.

F) Enforcement actions that included payment of penalty:

Company Name	Corrective Actions
Michigan Wood Pellet Fuel, LLC	Consent Order AQD No. 20-2010
Fagerdala USA – Marysville, Inc.	Consent Order AQD No. 21-2010
Shannon Investment Company, LLC	Consent Order AQD No. 22-2010
GRL Properties, LLC	Consent Order AQD No. 1-2011
Property Shield, LLC	Consent Order AQD No. 2-2011
Tri-County Cremation Services, LLC	Consent Order AQD No. 3-2011
Norman Pestka Construction, Inc.	Consent Order AQD No. 4-2011
Gene Brow & Sons, Inc.	Consent Judgment No. 10-1308-CE

G) The total number of inspections was 2,038. The number of inspections done for ROP sources was 254. The number of inspections of non-ROP sources was 1,784.

H) A total of 1,306 complaints were received during FY 2011. All complaints were logged, prioritized, evaluated, and resolved according to the AQD's procedures. A complaint is considered resolved if the problem has been abated, a Violation Notice requesting a compliance program has been sent, the district staff was not able to verify the problem, or the complaint was

Attachment M3 - Michigan Title V Submittal Update – July 2012

not under the AQD's jurisdiction and a referral was made to the appropriate agency. An on-site inspection was conducted for approximately 61 percent of the complaints. A telephone call or letter followed up the other complaints.

- I) The following represents the number of contested case hearings and civil actions initiated and completed, and the number of voluntary consent orders, administrative penalty orders, and emergency orders entered or issued for Title V sources:

Enforcement	Total Number
Hearings	0
Civil Actions	1
Consent Orders	7
Administrative Orders	0
Emergency Orders	0

- J) Revenue in the fund at the end of FY 2011 was \$1,901,685.

The information below and on the following page is required by Section 5522(9) of Act 451:

AQD EXPENDITURES BY FUND AND PROGRAM FUNCTION:

Program Function	General and Other Funds Total (See Chart Below) 41%	EPA Grants 28%	Air Fees 31%	Total 100%
Permit Section	\$2,325,935 (27%)	\$385,749 (7%)	\$18,802 (<1%)	\$2,730,487 (13%)
Enforcement Unit	\$430,737 (5%)	\$0	\$71,416 (1%)	\$502,154 (2%)
Field Operations	\$2,760,318 (32%)	\$1,665,786 (29%)	\$5,411,794 (83%)	\$9,837,899 (47%)
Air Quality Evaluation Section	\$2,247,299 (26%)	\$3,649,578 (62%)	\$595,956 (9%)	\$6,492,834 (31%)
Administration	\$842,145 (10%)	\$143,142 (2%)	\$404,501 (6%)	\$1,389,788 (7%)
Total AQD Expenditures	\$8,606,435 (100%)	\$5,844,256 (100%)	\$6,502,470 (100%)	\$20,953,161 (100%)
Revenues Appropriated	\$8,838,400	\$7,164,100	\$9,256,600	\$25,259,100

Attachment M3 - Michigan Title V Submittal Update – July 2012

GENERAL AND OTHER FUNDS DETAILS:

Program Function	General Fund	Refined Petroleum Fund	Dry Cleaning License Fees	Oil & Gas	Env. Response Fund	Total
Permit Section	\$2,037,548	\$242,799	\$0	\$45,588	\$0	\$2,325,935
Enforcement Unit	\$79,958	\$350,761	\$18	\$0	\$0	\$430,737
Field Operations	\$1,382,918	\$1,134,680	\$201,895	\$29,691	\$11,135	\$2,760,319
Air Quality Evaluation Section	\$982,780	\$1,225,380	\$0	\$39,140	\$0	\$2,247,299
Administration	\$761,953	\$72,779	\$5,178	\$1,881	\$354	\$842,145
Total AQD Expenditures	\$5,245,156	\$3,026,400	\$207,090	\$116,300	\$11,489	\$8,606,435
Revenues Appropriated	\$5,257,200	\$3,026,400	\$323,900	\$116,300	\$114,600	\$8,838,400

Air Emissions Fund expenditures of \$105,384 from the DEQ, Office of Environmental Assistance, are not included in the above totals. The Michigan Economic Development Corporation, Small Business Ombudsman, was not funded in FY 2011.

Attachment M4 - Michigan Title V Submittal Update - July 2012

**Michigan Fee Formula
Projected Funding and Expenditures
FY10 through FY15**

Air Emission Fee Funded Costs	FY10		ACTUAL FY11		FY12		FY13		PROJECTED FY14		FY15	
	FTE	\$	FTE	\$	FTE	\$	FTE	\$	FTE	\$	FTE	\$
	Air Quality Division	72.0	7,830,693	58.0	6,504,401	60.0	7,065,718	61.0	8,045,900	61.0	8,287,277	61.0
Clean Air Assistance & Ombudsman Programs	2.0	207,555	1.0	129,931	1.0	128,900	1.0	131,900	1.0	135,857	1.0	139,933
DEQ Allocations		1,894,264		1,788,529		2,185,000		1,830,700		1,885,621		1,942,190
Civil Service Indirect		140,292		139,558		141,930		144,343		146,797		149,293
Office of Civil Investigation Allocation		90,114		12,142		50,000		54,100		55,723		57,395
Total Costs	74.0	10,162,918	59.0	8,574,561	61.0	9,571,548	62.0	10,206,943	62.0	10,511,275	62.0	10,824,706
Beginning Fund Balance		1,856,635		1,412,117		1,901,825		1,930,277		1,467,334		846,219
Projected Revenue		<u>9,718,400</u>		<u>9,064,269</u>		<u>9,600,000</u>		<u>9,744,000</u>		<u>9,890,160</u>		<u>10,038,512</u>
Total Costs		<u>10,162,918</u>		<u>8,574,561</u>		<u>9,571,548</u>		<u>10,206,943</u>		<u>10,511,275</u>		<u>10,824,706</u>
Ending Fund Balance		<u>1,412,117</u>		<u>1,901,825</u>		<u>1,930,277</u>		<u>1,467,334</u>		<u>846,219</u>		<u>60,025</u>