

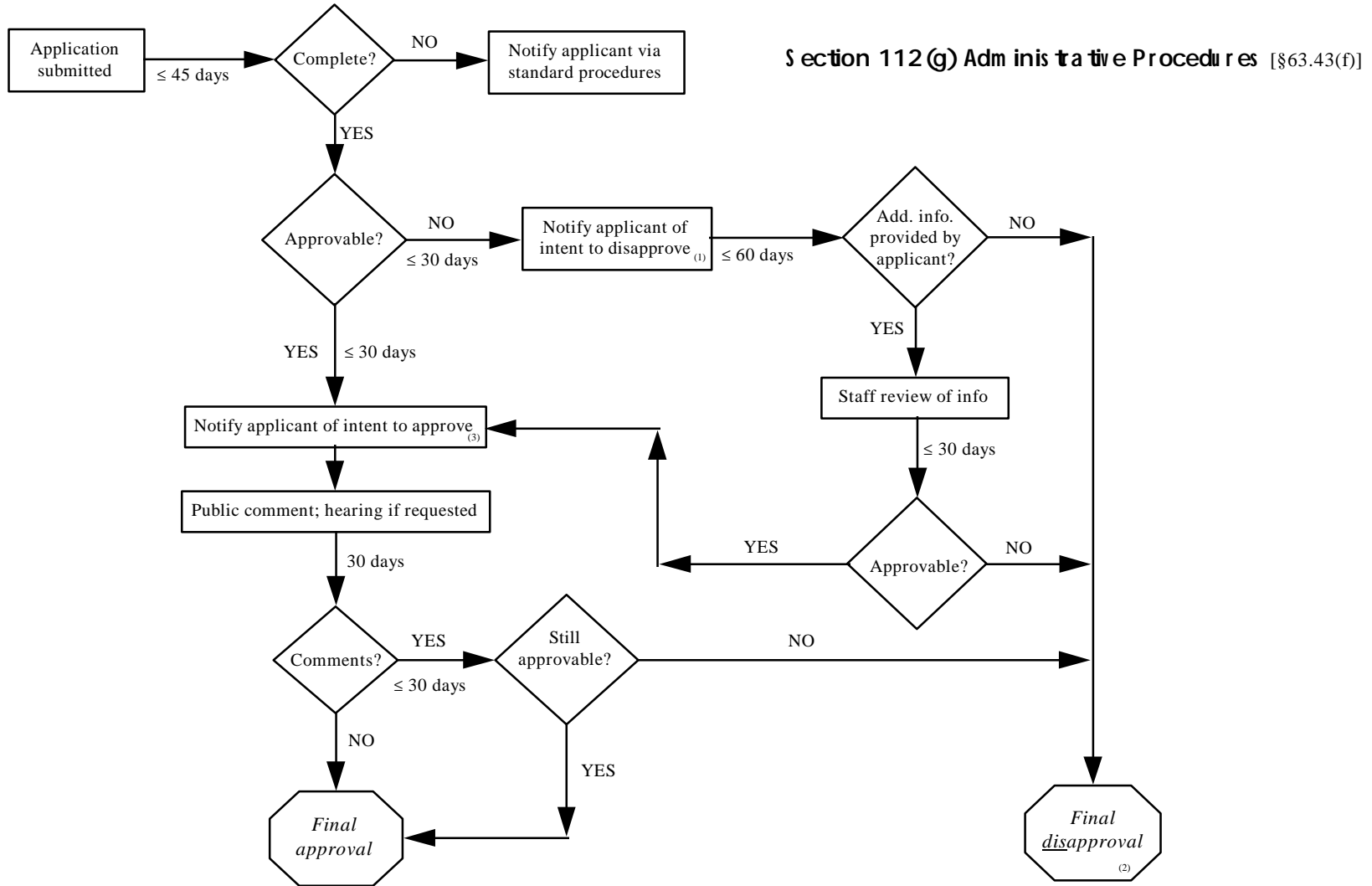
Attachment E

Flow Charts

The following two flow charts are provided to assist readers of the operational memorandum with a visual picture of the time involved, and timing requirements, for review procedures at both the state and federal level.

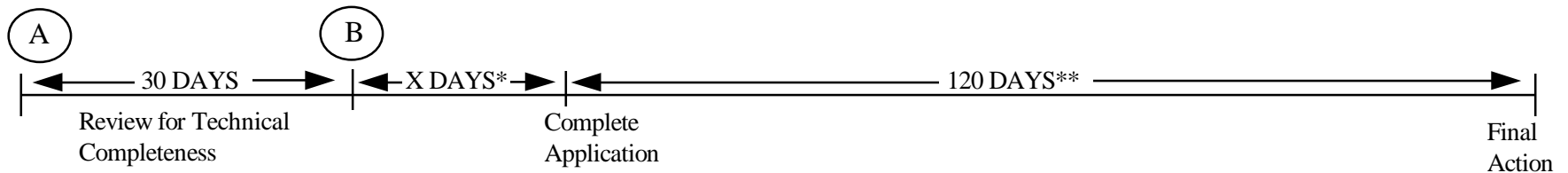
The first flow sheet depicts the timing for the **federal** requirements only. There was no attempt to overlay state requirements. The footnote at the bottom of sheet is important for understanding the process in the event of a proposed disapproval.

The second sheet depicts three timelines. The top line shows the standard requirements for a new source review permit subject to public comment requirements. The middle line shows the requirements for a source subject to Rule 299(e) [Section 112(g)], and proceeding through a proposed approval action. The last line show the requirements for a source subject to Rule 299(e), and proceeding through a proposed disapproval action.

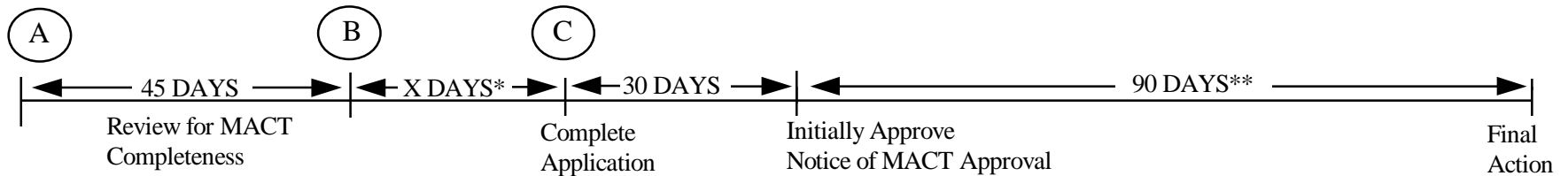


IMPORTANT: The time frame from an Intent to Disapprove⁽¹⁾ to either Final Disapproval⁽²⁾ or issuance of an Intent to Approve⁽³⁾ must not exceed 90 days.

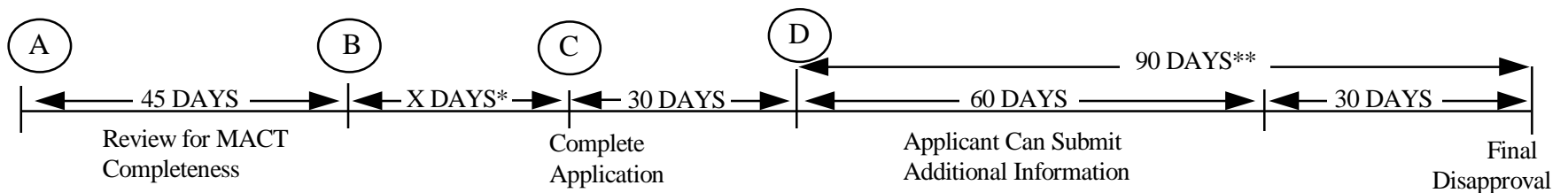
New Source Review Process



Action for MACT Approval



Action for MACT Disapproval



*X Days is the amount of time agreed upon by applicant and staff to respond with additional information to complete application

**During this period, Public Notice and Comment Period must be held, and Hearing is held if requested

A - Receipt of Application

B - Additional Information Request