

SOLID WASTE HAULER REQUIREMENTS

There are several agencies that are involved with solid waste hauling. Solid waste is often called garbage or trash. It does not include regulated hazardous waste or liquid industrial waste. The Department of Environmental Quality (DEQ) does not license solid waste haulers or drivers but there are waste hauling requirements that are summarized below.

WASTE HAULING ENVIRONMENTAL REQUIREMENTS:

There are four basic steps to meet under the waste and air regulations:

I. Don't take banned waste to landfills.

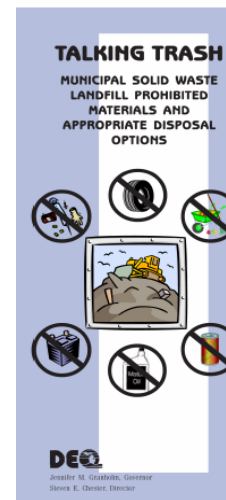
Solid waste haulers are required to annually notify their customers about what wastes are banned from landfill disposal. You may make copies of the brochure [Talking Trash, Landfill Prohibited Materials and Appropriate Disposal Options for Residential Customers](#) for your customers if you want, or develop your own notice. Contact the WHMD Solid Waste Management Unit at 517.335.4035 with questions about banned waste.

Contact the disposal or recycling facility [solid waste transfer station, landfill, or municipal solid waste incinerator or a solid waste materials recovery facility (e.g. recycling center)] for what wastes or materials they will or won't accept and any special requirements they may have. A disposal facility is not required to accept everything the regulations allow to be landfilled or incinerated.

II. Meet the transporting unit requirements.

Part 6 of the solid waste rules (available at <http://www.deq.state.mi.us/documents/deq-wmd-swp-pt15rls.pdf>) includes requirements for the unit used to haul the waste. In summary:

- Use a transporting unit that is designed to avoid spillage of waste. All openings must be closed and doors or covers must be secured by an adequate latch or restraining mechanism to keep them closed while transporting solid waste which may blow or fall off the vehicle. The driver is responsible for using and properly positioning covers that prevents the waste from blowing or falling out of the vehicle and that doesn't rip, shred or breaks easily under normal use. Use a special covering where conditions require the control of odor, vermin, liquids, dust, or smoke.
- Repair the unit if needed or stop using it.
- Clean it regularly to reduce odors and so it doesn't cause a nuisance or vermin attraction. Dispose of the cleaning water as liquid industrial waste. If connected to a municipal wastewater treatment plant (WWTP), get their permission to discharge the waste water to the sewer. If not connected to a WWTP, contact the Environmental Assistance Center at 800-662-9278 or [district office](#) to discuss liquid industrial waste disposal requirements.
- Load the unit in a manner that minimizes spillage of waste.
- Do not park the unit in a residential area longer than necessary to collect solid waste, unless it is parked more than 500 feet from adjacent residences. The unit must not be parked, stored or established at any location where it can cause a hazard to health or at any residentially zoned location to cause a nuisance.
- If there is spillage, the material must be picked up as soon as possible and the area suitable cleaned.
- If solid waste is purposely dumped from a solid waste transporting unit due to a hot load or fire, the fire must be immediately extinguished by the most effective means and the area properly cleaned as soon as reasonably possible.



III. Take the waste to appropriate recycling facilities, licensed disposal landfills, transfer stations, or licensed incinerators.

Contact the disposal or recycling facility for their specific requirements. If you are taking waste out of the county where the waste was generated for disposal in another Michigan county, it must be allowed under both the generating and receiving county's solid waste management plan. Contact the [designated planning agencies](#) for those counties and they can help identify the locations where the waste can be taken for disposal. A map of licensed landfills is at http://www.michigan.gov/deg/0,1607,7-135-3312_4123-9894--,00.html. You can also search the Waste Data Systems at www.deg.state.mi.us/wdspi/ for a listing of landfills, transfer stations, and processing plants. DEQ does not have a list of municipal waste incinerators on the Internet. There are two "Types" of solid waste landfills. A Type II landfill means a municipal solid waste landfill. A Type III landfill means a construction and demolition waste landfill or a landfill that accepts non hazardous industrial waste.



A list of recyclers that have notified the DEQ that take specific materials can be found in the [Recycled Materials Market Directory](#).

If you will be offering services to pick up used appliances that contain refrigerants (e.g. Freon®, chlorofluorocarbons (CFCs), etc.), check if the disposal company or recycler will accept them and their procedures. Some require a "red tag" to be put on old appliances certifying the refrigerants have been properly removed before they will accept them so check if they provide the tags. If they don't, and if you are the company removing the CFCs per the federal regulations, get the specific information the disposal company wants on the tag and have them made by a printer. Consider using a "[Great Printer](#)." The EPA oversees the regulations that require all refrigerants to be properly removed before being recycled for scrap metal or disposed of. See the EPA information about [Complying With The Section 608 Refrigerant Recycling Rule](#) or call the Stratospheric Ozone Information Hotline at 1-800-296-1996 with questions.

If you will be picking up more than 7 scrap tires, you must register as a [scrap tire hauler](#) and take the tires to a proper site and use a scrap tire manifest. Contact the [district office scrap tire inspector](#) with any questions about hauling scrap tires.

If servicing residential customers especially when offering one time cleanout services, be aware there are times when customers have household hazardous waste that they want removed. Before taking it, contact the disposal facility where you haul the waste to determine if you can take that type of waste to them. Recommend the customers contact their [local household hazardous waste collection programs](#) for local disposal options. If the area does not have a local collection program, some information about finding other disposal options and alternatives to these products can be found at www.earth911.org.

IV. If hauling waste into the state, meet the additional importation requirements.

See the information and forms posted at www.michigan.gov/degwaste "Solid Waste" "Laws and Rules" "[Landfill Prohibited Materials and Appropriate Disposal Options](#)." Additional information is available from the [Border Center WasteWatcher](#). Discuss solid waste import questions with the Rhonda Oyer Zimmerman, Waste and Hazardous Materials Division, at 517-373-4750.

LOCAL AGENCY REQUIREMENTS:

Some areas in the state require a local business license or have other local operating requirements. Contact the county or city clerk's office regarding license or other local requirements and check with the county's [Solid Waste Designated Planning Agency](#) (DPA) for local information regarding where the waste may be taken.

SECRETARY OF STATE REQUIREMENTS:

For vehicle and driver licenses, contact the Department of State, Secretary of State, Driver & Vehicle Information at 517-322-1460 or call or visit your local Secretary of State Branch Office (find your local office under State Government pages in telephone directory). Some information is also on the Internet at <http://www.michigan.gov/sos> for links regarding license and renewal requirements and for branch office locations, hours, and phone numbers or Internet for locations and phone numbers.

STATE POLICE REQUIREMENTS:

Regarding the vehicle transportation requirements including weight restrictions, contact the Michigan Center for Truck Safety at 800-682-4682 or www.truckingsafety.org. You may also contact the Michigan State Police, Traffic Safety Division (previously called the Motor Carrier Division) for additional transportation information. Contacts and information is at www.michigan.gov/msp/0,1607,7-123-1593_3536---,00.html.

DEPARTMENT OF LABOR AND ECONOMIC GROWTH REQUIREMENTS:

Worker health and safety issues are overseen by MIOSHA. Call their Consultation Education and Training Division at 517-322-1809 or go to www.michigan.gov/miosha for more information including their [Part 17. Refuse Packer Units standard](#).

Companies hauling scrap metal for hire are subject to the MOTOR CARRIER ACT (Act 254 of 1933 is at www.michigan.gov/mpsc/0,1607,7-159-16397---,00.html). Other materials being shipped for recycling are excluded. The Michigan Public Service Commission is responsible for the insurance and safety regulation of the intrastate for-hire trucking industry for industrial scrap metal. The Commission processes applications for new or expanded operating authority, registers intrastate motor vehicles and the vehicles of interstate motor carriers conducting business in Michigan, and maintains on file proof of insurance of the motor carriers. Contact Herb Fields 517-241-6040 from the Department of Labor and Economic Growth, Michigan Public Service Commission.

NEW BUSINESS ASSISTANCE:

Go to www.michigan.org/medc/services/startups and follow the business links or call the Michigan Economic Development Corp at 877-873-4567 for help starting up a new business. They have information about taxes, registering company name, plus much more.

If you have additional environmental questions, contact the DEQ Environmental Assistance Center at 800-662-9278 or send an email with your questions to deq-ead-env-assist@michigan.gov or call your [DEQ district office](#).

This document was developed in June 2007 by the Environmental Science and Services and Waste and Hazardous Materials Divisions. Reliance on information from this document is not usable as a defense in any enforcement action or litigation. Refer to the regulations or discuss your requirements with the regulating agency staff.

The Michigan Department of Environmental Quality (MDEQ) will not discriminate against any individual or group on the basis of race, sex, religion, age, national origin, color, marital status, disability, or political beliefs. Questions or concerns should be directed to the MDEQ Office of Human Resources, PO Box 30473, Lansing, MI 48909.