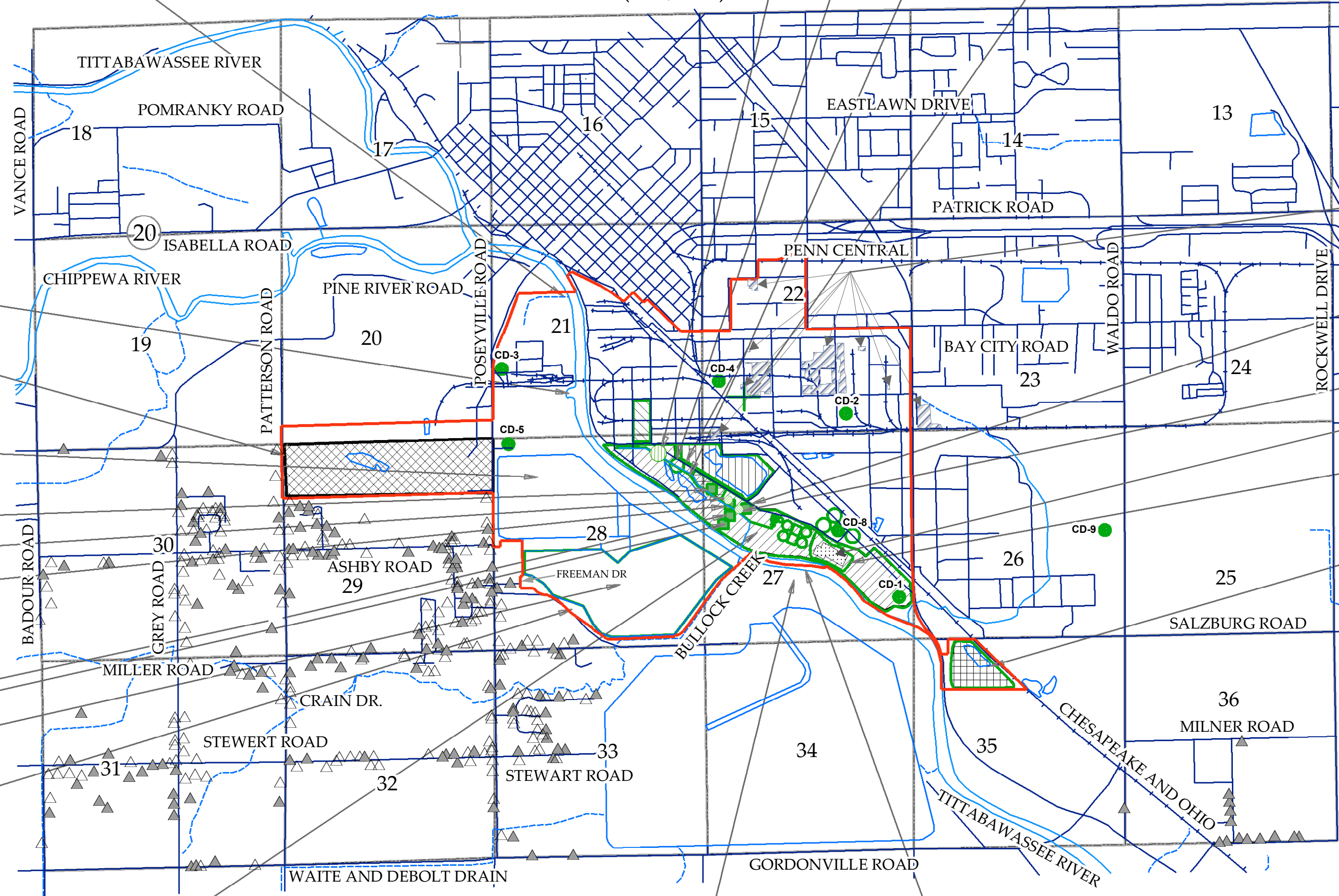


LATTITUDE = 43°-36'-11"
LONGITUDE = 84°-13'-23"

CLOSED WASTEWATER CONDUITS
CLOSED WASTE STORAGE AREA IIB (S01, S02)
OUTFALL (005)
CLOSED WASTE STORAGE AREA IIA (S01, S02)

RIVER INTAKE
CLOSED POSEYVILLE LANDFILL
#6 BRINE POND
WASTE STORAGE AREA I (S01)
CLOSED 703 INCINERATOR
INCINERATOR COMPLEX (S02, T03)
& 830 BLDG. (S01)
1163 BLDG. (S01, S02, T01)
33 BLDG. (S01, T01)
TERTIARY POND (S04, T02)
FACILITY BOUNDARY
NOTE: Facility Boundary Description Presented in Liber 1356, page 916, 917, and 918
CLOSED 1925 LANDFILL



NON-DOW ASSETS
(PROPERTY OWNED BY THE DOW CHEMICAL COMPANY)
29 BLDG.
(REMOVED FROM LICENSE NOV 2011)
CLOSED 830 INCINERATOR
STAGING PILE / CORRECTIVE ACTION MANAGEMENT UNIT
CLOSED DIVERSION BASIN
CLOSED SLUDGE DEWATERING FACILITY

CLOSED HAZARDOUS WASTE MANAGEMENT UNITS
SLUDGE DEWATERING FACILITY
DIVERSION BASIN
WASTEWATER CONDUITS
703 INCINERATOR
830 INCINERATOR
WASTE STORAGE AREA IIA

● INDICATES CLOSED DISPOSAL WELLS
▲ INDICATES DRINKING WATER WELLS AS OF 2013
△ DWELLING ON CITY WATER SUPPLY, BUT NO WELL CLOSURE RECORD
■ NON-DOW ASSETS
(PROPERTY OWNED BY THE DOW CHEMICAL COMPANY)

THE DOW CHEMICAL CO.
MIDLAND MI. - FACILITY #MID 000724724

CLOSED WASTE MANAGEMENT UNITS
1925 LANDFILL
POSEYVILLE LANDFILL
LEL I
LEL II
LEL III

DRAWING B2-010-927122
RCRA PART A FACILITY MAP
PART 111 OPERATING LICENSE RE-APPLICATION
FACILITY ID NUMBER MID000724724
(Revised March 2013)

