


Legend

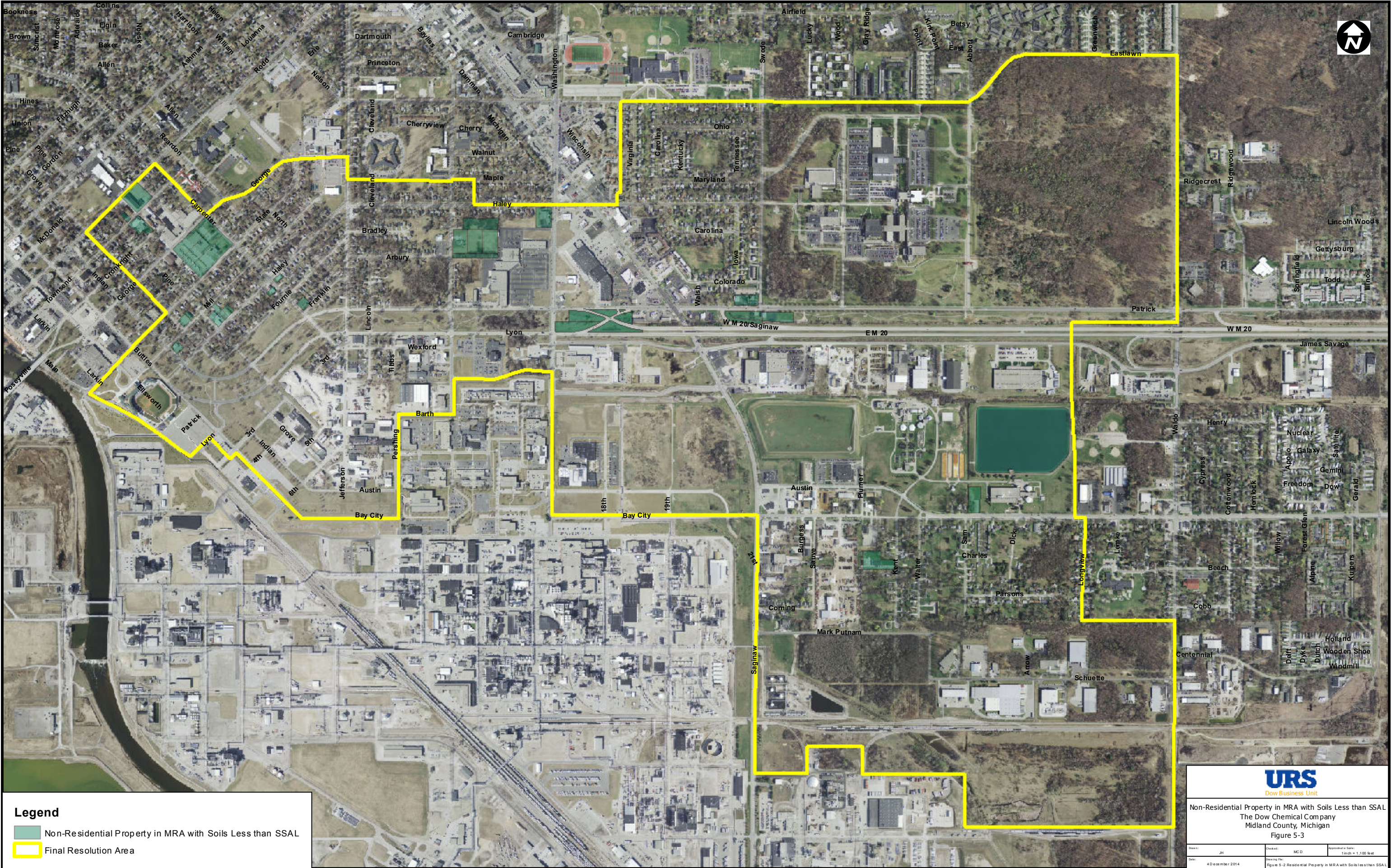
- Residential Property in MRA with Soils Less than SSAL
- Final Resolution Area





URS
Dow Business Unit

Residential Property in MRA with Soils Less than SSAL
The Dow Chemical Company
Midland County, Michigan
Figure 5-2

| | | |
|--------------------------|---|--|
| Drawn: JH | Checked: MCD | Approved/Scale: 1 in ch= 1,100 feet |
| Date: 4 December 2014 | Drawing No: Figure 5-2 Residential Property in MRA with Soils less than SSAL | |



Legend

-  Non-Residential Property in MRA with Soils Less than SSAL
-  Final Resolution Area



Non-Residential Property in MRA with Soils Less than SSAL
The Dow Chemical Company
Midland County, Michigan
Figure 5-3

| | | |
|-----------------|--|---------------------|
| Drawn: | Checked: | Approved: |
| JH | MCD | SLS |
| Date: | Drawing No.: | Scale: |
| 4 December 2014 | Figure 5-2 Residential Property in MRA with Soils less than SSAL | 1 inch = 1,100 feet |

