

Legend

- ▲ Soil XRF Sample Exceeds Part 201 Residential Direct Contact Criteria (RDCC)
 - XRF results exceeding RDCC are shown in Orange
 - Laboratory results exceeding RDCC are shown in Yellow
- mg/kg -- milligrams per kilogram

Source of Imagery: ESRI ArcGIS Map Service (c) 2007
Date of Photography: 06/21/2005

Figure 5b



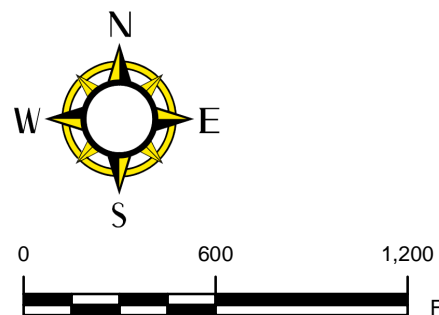
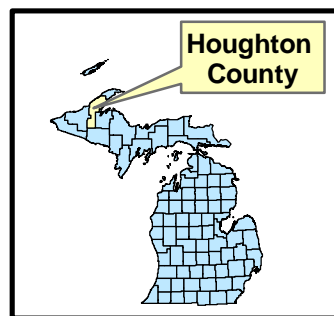
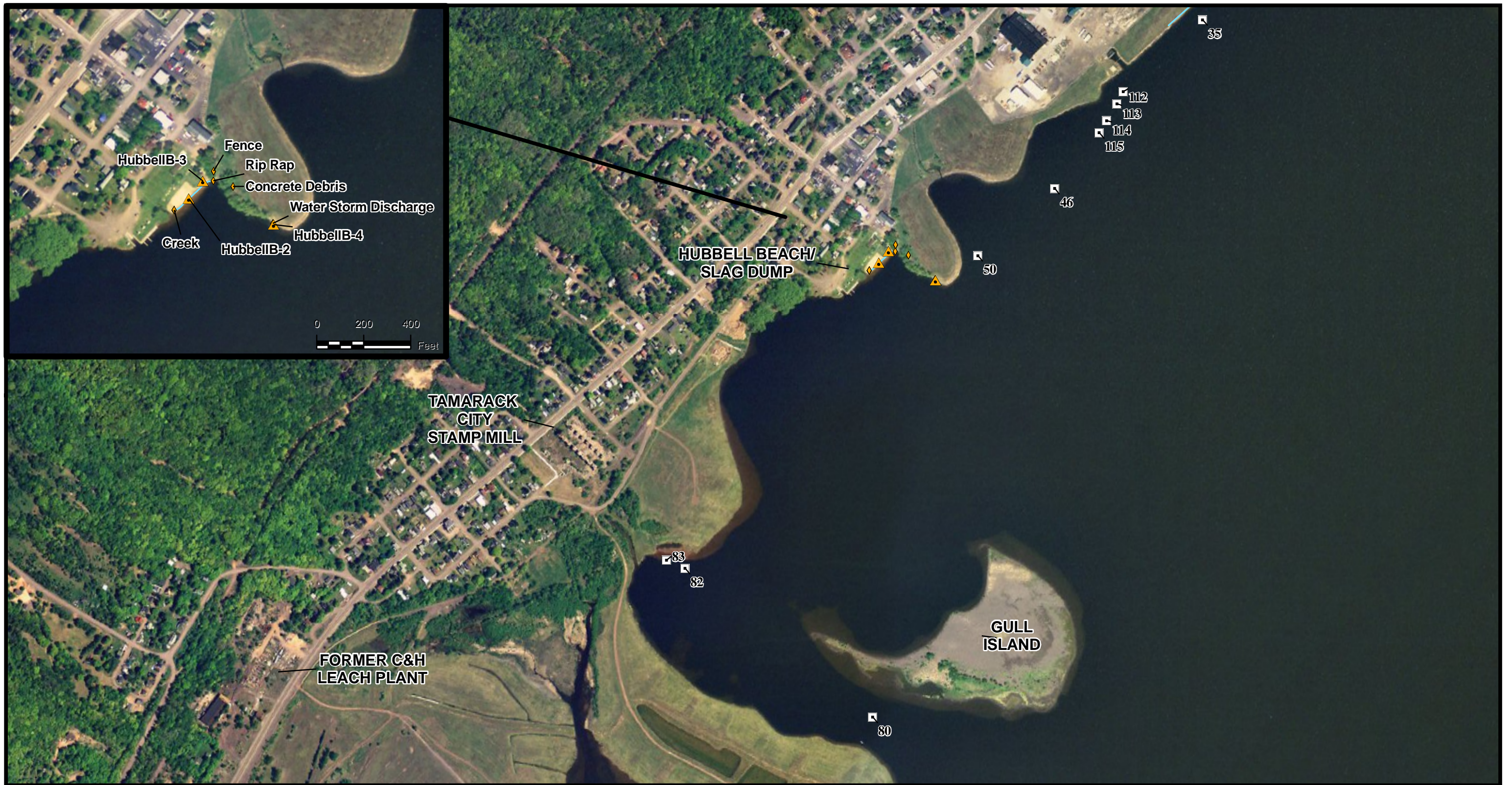
Prepared for:
U.S. EPA REGION V
Contract No: EP-S5-06-04

TDD No.: S05-0002-0708-020
DCN: 274-2A-ABDT



Prepared by:
WESTON SOLUTIONS, INC.
2501 Jolly Road, Suite 100
Okemos, Michigan

AOI No. 19
RDCC EXCEEDANCES IN SOIL
TORCH LAKE AREA ASSESSMENT
KEWEENAW PENINSULA, MICHIGAN
October 2007



Legend

- ▲ START XRF and Laboratory Sample
- ▲ START XRF Sample
- ◆ GPS Feature - Other
- MDEQ Identified Drums/Debris
- Water Edge

Note: None of the Hubbell Beach XRF Results Exceeded Part 201 Residential Direct Contact Criteria (RDCC)

Source of Imagery: ESRI ArcGIS Map Service (c) 2007
Date of Photography: 06/21/2005



Prepared for:
U.S. EPA REGION V
Contract No: EP-S5-06-04

TDD No.: S05-0002-0708-020
DCN: 274-2A-ABDT



Prepared by:
WESTON SOLUTIONS, INC.
2501 Jolly Road, Suite 100
Okemos, Michigan

AOI Nos. 20 and 21
SITE FEATURES AND XRF LOCATIONS
TORCH LAKE AREA ASSESSMENT
KEWEENAW PENINSULA, MICHIGAN
October 2007

Figure 6