

Gelman Sciences, Inc. Site Third Amendment to Consent Judgment

March 30, 2011

Michigan Department of Environmental Quality
Remediation Division



Sybil Kolon

DEQ Project Manager for
Gelman Sciences, Inc. Site
kolons@michigan.gov

517-780-7937

Mitch Adelman

Jackson District RD Supervisor
adelmanm@michigan.gov

517-780-7852



AGENDA

- **Introductions & Purpose**
- **Information Available**
- **DEQ Authority and Oversight**
- **Basis for Amendments**
- **Remediation Division's 2009 Decision**
- **DEQ's Critical Concerns**
- **Summary of Amendments**
- **Moving Forward**
- **Questions**



Introductions & Purpose

- To inform the public about the Third Amendment to Consent Judgment
- How the remedial obligations of Pall Life Sciences have been modified
- Answer questions



Information Available

- Web site:
www.michigan.gov/deqrrd scroll
to “Contaminated Sites List” and
click on “Gelman Sciences, Inc.”
- Information Repositories
- E-mail distribution list



DEQ Authority and Oversight

- Part of DNR became DEQ in 1995
- The DEQ administers Part 201
- DEQ principles
 - Being leaders in environmental stewardship
 - Being full partners in Michigan's economic development
 - Excelling at customer service at every opportunity
- DEQ is responsible for protecting the public health, safety, welfare & environment
- RD also oversees compliance with the Consent Judgment



DEQ Authority and Oversight

Other Remediation Division Work

- Leaking Underground Storage Tanks (Part 213)
- Other Liable Party and Orphan (Part 201) sites
- Brownfield redevelopment
- Emergency container removals



Basis for Amendments

- Section 2a of Part 201 of the NREPA requires that DEQ approve changes to legal agreements that meet the requirements of the amendments to Part 201 upon the request of the party subject to the legal agreement
- Must be protective of human health, safety, welfare and the environment



Basis for Amendments

Provisions for Modification - (§324.20102a)

- (1) Notwithstanding any other provision of this part, the following actions shall be governed by the provisions of this part that were in effect on May 1, 1995:
- (3) Notwithstanding subsection (1), upon request of a person implementing response activity, the department shall approve changes in a plan for response activity **to be consistent with sections 20118 and 20120a.**



RD's 2009 Decision


Due to a number of deficiencies, including insufficient monitoring plan, lack of contingency plan, uncertainty about migration pathways, and uncertainty about the current location of the 85 ppb plume, the proposed plan lacked sufficient detail to be either conditionally or unconditionally approved, and was denied.




DEQ's Critical Concerns

- Assuring protection of Barton Pond & nearby residential wells
- Potential lowering of dioxane criterion
- Protection of public health, safety, welfare and the environment
- Enforceability
- Financial assurance



SYSTEM	OLD CJ & Other Orders	NEW CJ
Evergreen	Full cleanup	Mass removal PZ & Well ID Process
Core	Full cleanup	Mass removal & deed restrictions
Western / Little Lake Area	Full cleanup	Full cleanup or mass removal & deed restrictions
Unit E Plume 	PZ established, well ID process & mass removal; prevent >85 ppb east of Wagner if possible	>85 ppb can migrate into PZ; improvements, see next slide

SYSTEM	WHY DEQ Amended the CJ
Evergreen	Section 2a, existence of original PZ, contingency plan for potential migration toward Barton Pond, better monitoring network
Core	Section 2a, additional investigation and improved monitoring plan, and if plume expands, PLS has to return plume to current extent and is subject to penalty
Western / Little Lake Area	PLS agreed to continue remediation until fully cleaned up or obtain deed restrictions as allowed by Sections 2a, 18 & 20 if they don't achieve cleanup standard
Unit E Plume 	200 gpm minimum purge rate from Wagner Road extraction wells w/termination subject to DEQ approval to prevent migration of mass into the Eastern Area; improved monitoring

Moving Forward

- We have a new, legally enforceable Consent Judgment
- Downgradient investigation of plume in PZ as plume migrates toward river
- Long term commitment by DEQ and PLS



QUESTIONS



Information Available

- Web site:
www.michigan.gov/deqrrd scroll
to “Contaminated Sites List” and
click on “Gelman Sciences, Inc.”
- Information Repositories
- E-mail distribution lists



Sybil Kolon

DEQ Project Manager for
Gelman Sciences, Inc. Site
kolons@michigan.gov

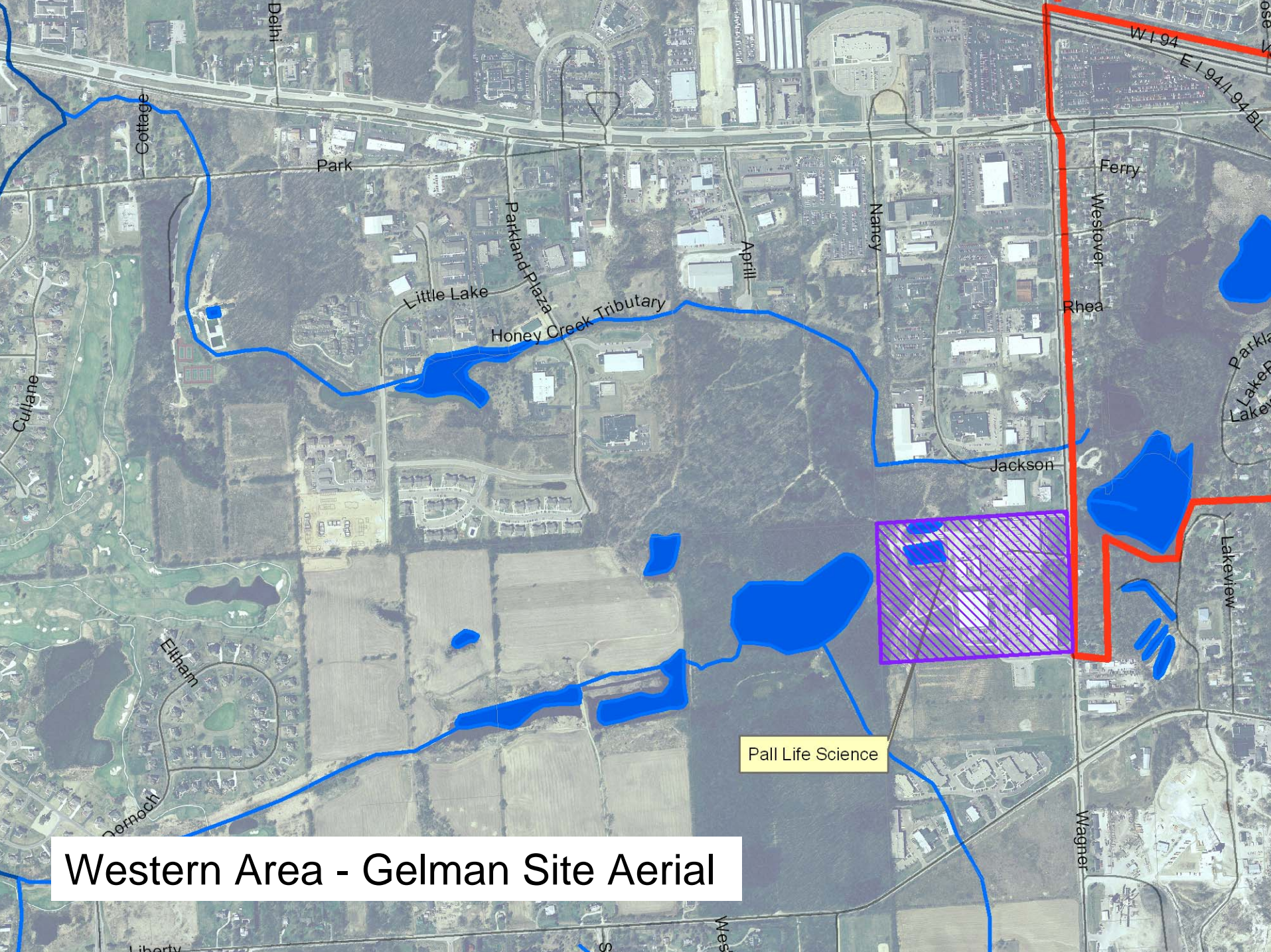
517-780-7937

Mitch Adelman

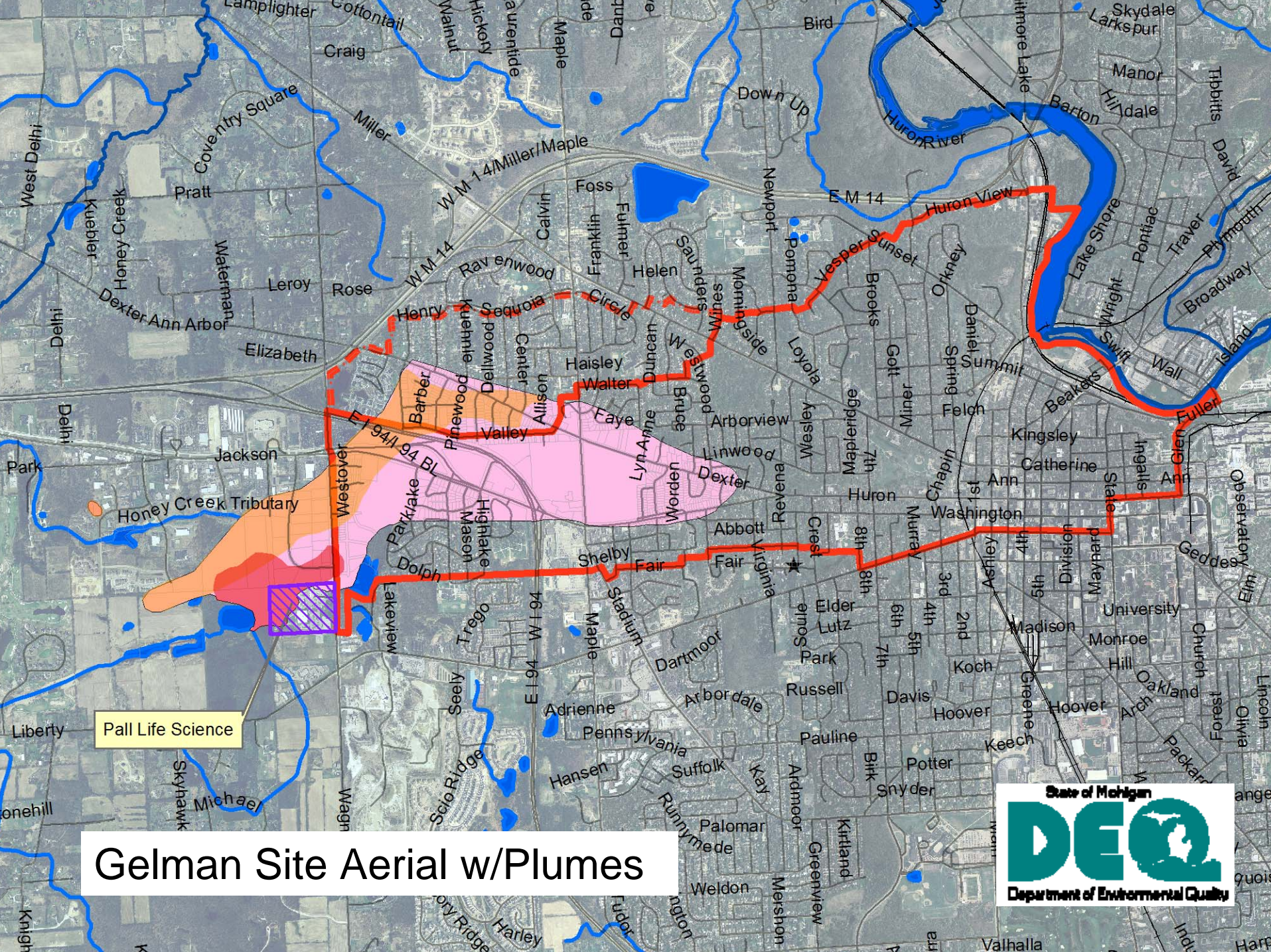
Jackson District RD Supervisor
adelmanm@michigan.gov

517-780-7852



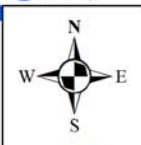


Western Area - Gelman Site Aerial



Gelman Site Aerial w/Plumes

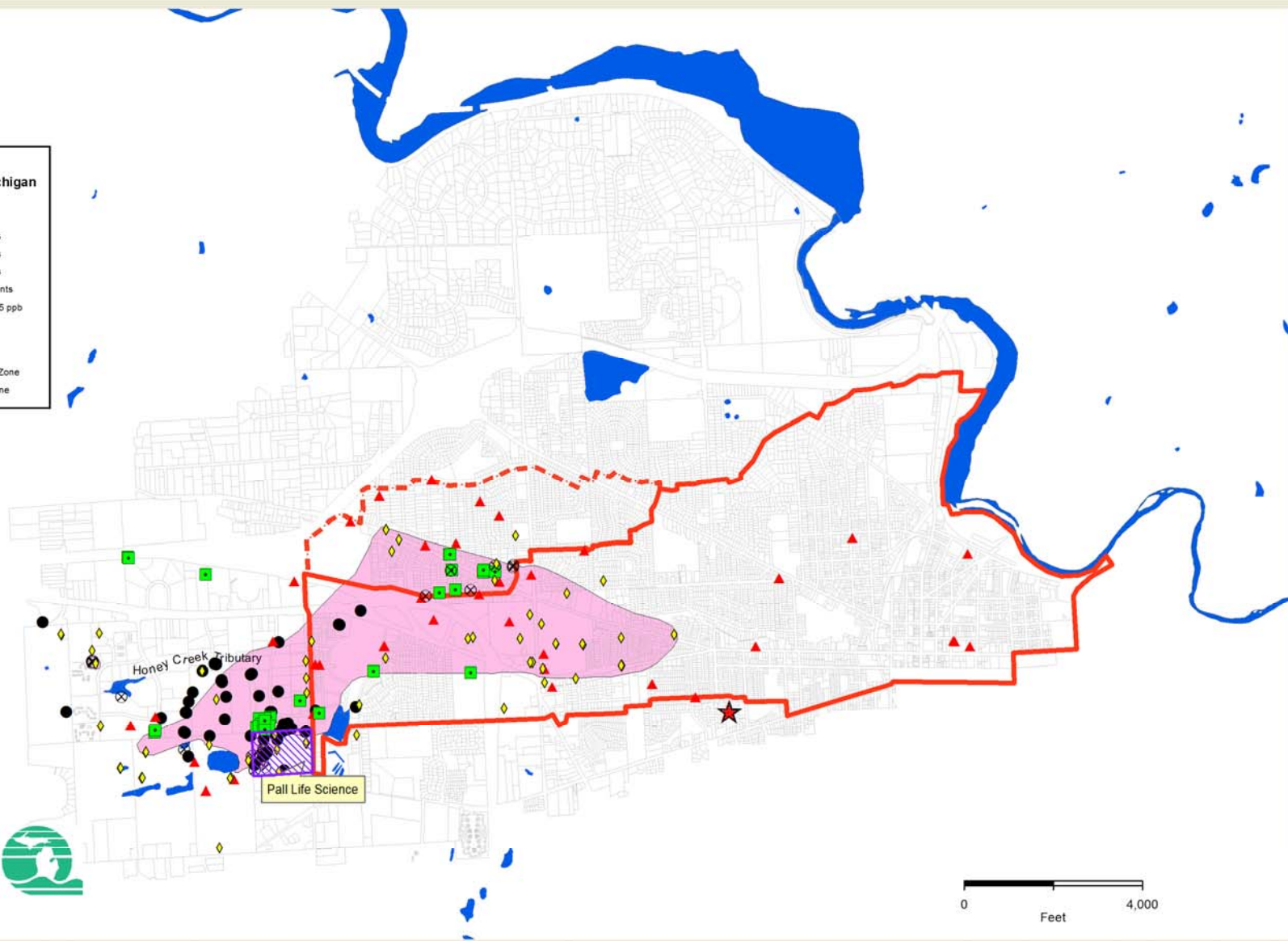




**Pall Life Sciences
Washtenaw County Michigan
March 2011**

- 'Pre 1992's' Events
- '1992 to 1995's' Events
- ⊗ '1995 to 2000's' Events
- ◆ '2000 to 2005's' Events
- ▲ '2005 to Present's' Events
- 1,4 Dioxane Plume >85 ppb
- ★ NW Supply Well

- - - Expanded Prohibition Zone
- Original Prohibition Zone



0 4,000
Feet

Gelman Sciences, Inc.
Washtenaw County
March 2011
Figure 1

0 4,000
Feet

Legend

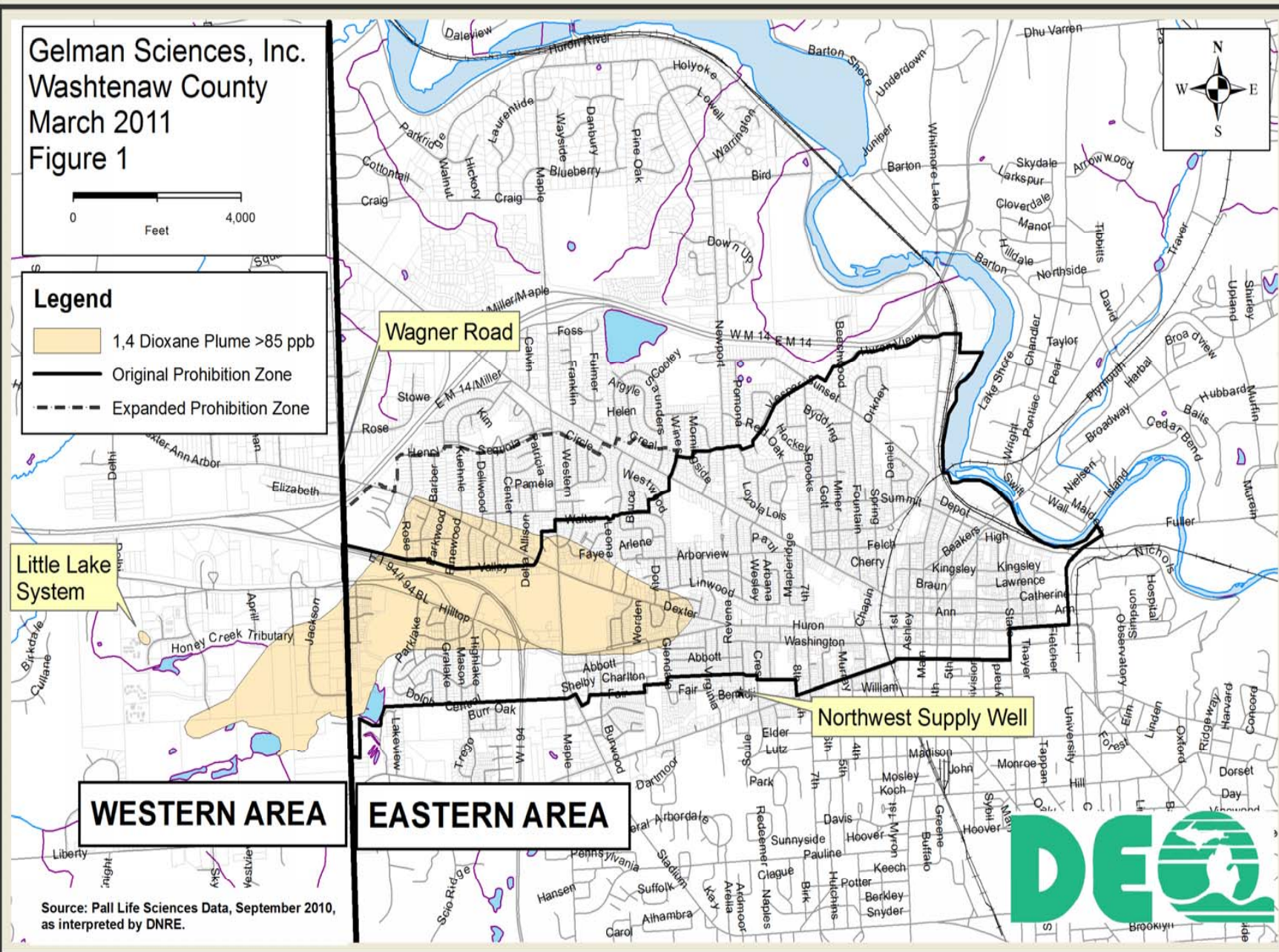
- 1,4 Dioxane Plume >85 ppb
- Original Prohibition Zone
- Expanded Prohibition Zone

Little Lake
System

WESTERN AREA

EASTERN AREA

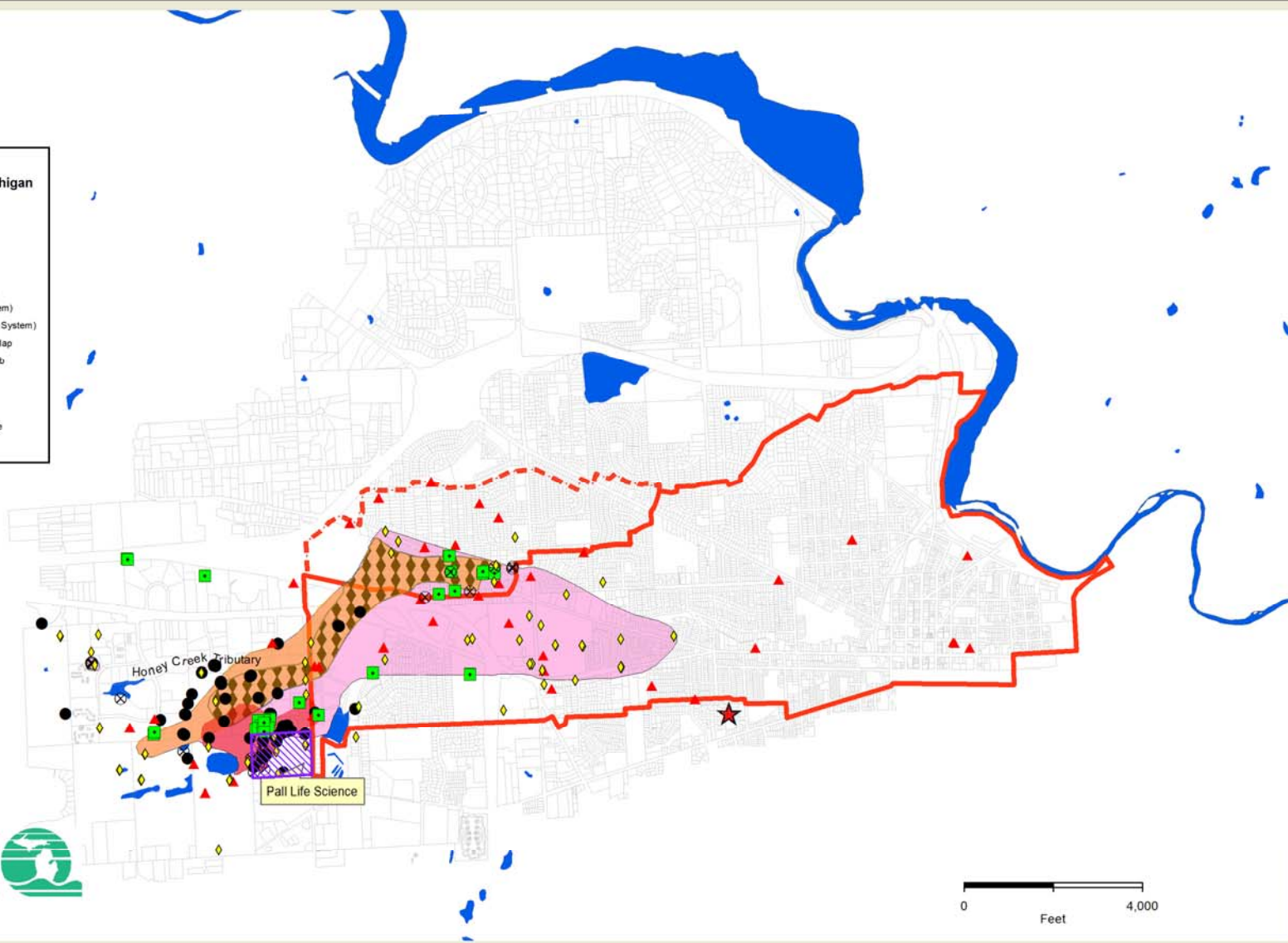
Source: Pall Life Sciences Data, September 2010,
as interpreted by DNRE.





**Pall Life Sciences
Washtenaw County Michigan
March 2011**

- 'Pre 1992's' Events
- '1992 to 1995's' Events
- ⊗ '1995 to 2000's' Events
- ◆ '2000 to 2005's' Events
- ▲ '2005 to Present's' Events
- Unit C3 Plume (Core System)
- Unit D2 Plume (Evergreen System)
- Unit E and D2 Plume Overlap
- 1,4 Dioxane Plume >85 ppb
- ★ NW Supply Well
- - - Expanded Prohibition Zone
- Original Prohibition Zone



0 4,000
Feet

Western Area Extraction Wells

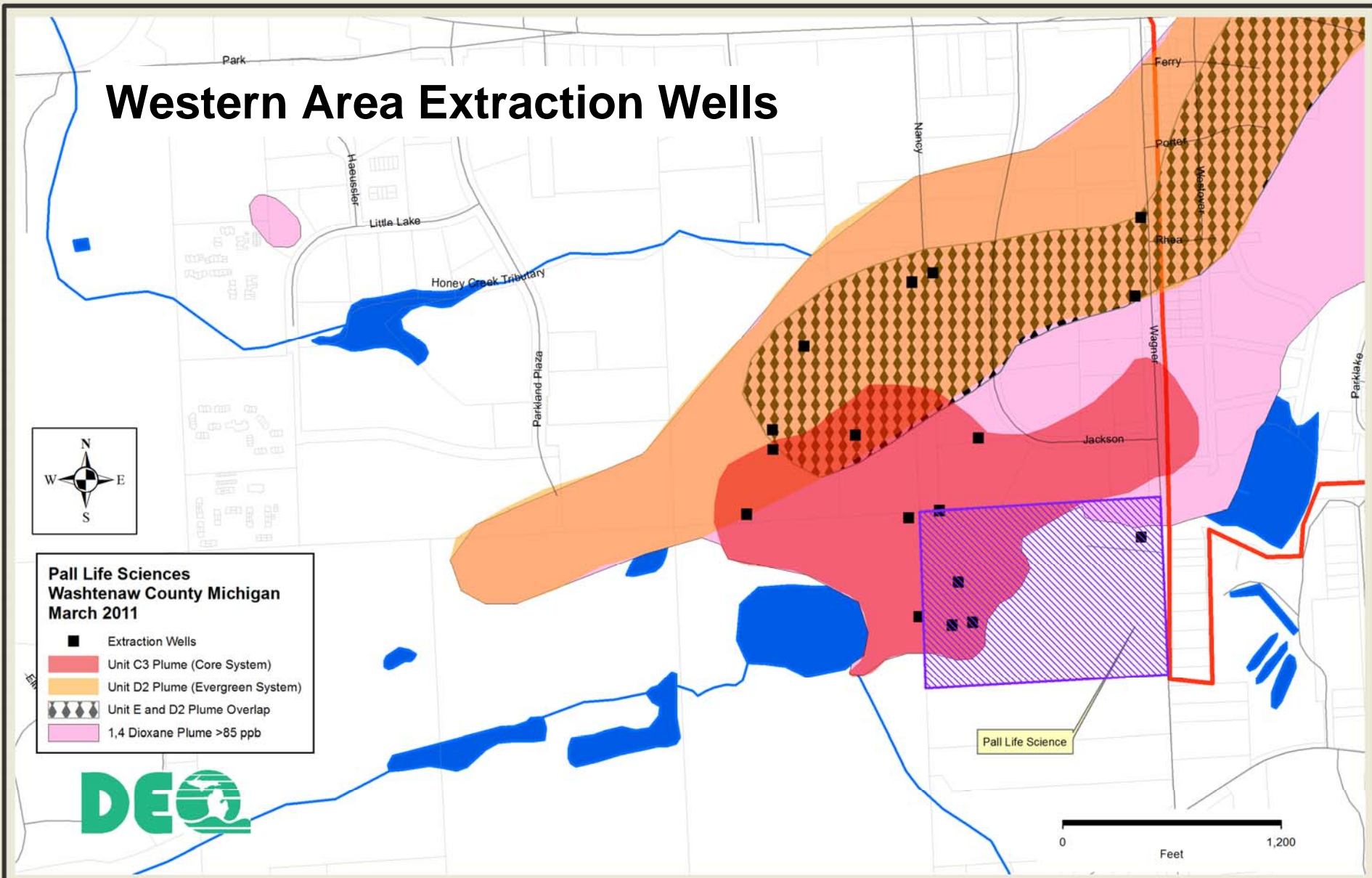


**Pall Life Sciences
Washtenaw County Michigan
March 2011**

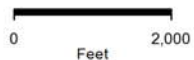
- Extraction Wells
- Unit C3 Plume (Core System)
- Unit D2 Plume (Evergreen System)
- Unit E and D2 Plume Overlap
- 1,4 Dioxane Plume >85 ppb





0 1,200
Feet

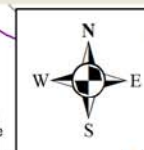


Gelman Sciences, Inc.
Washtenaw County
March 2011



Legend

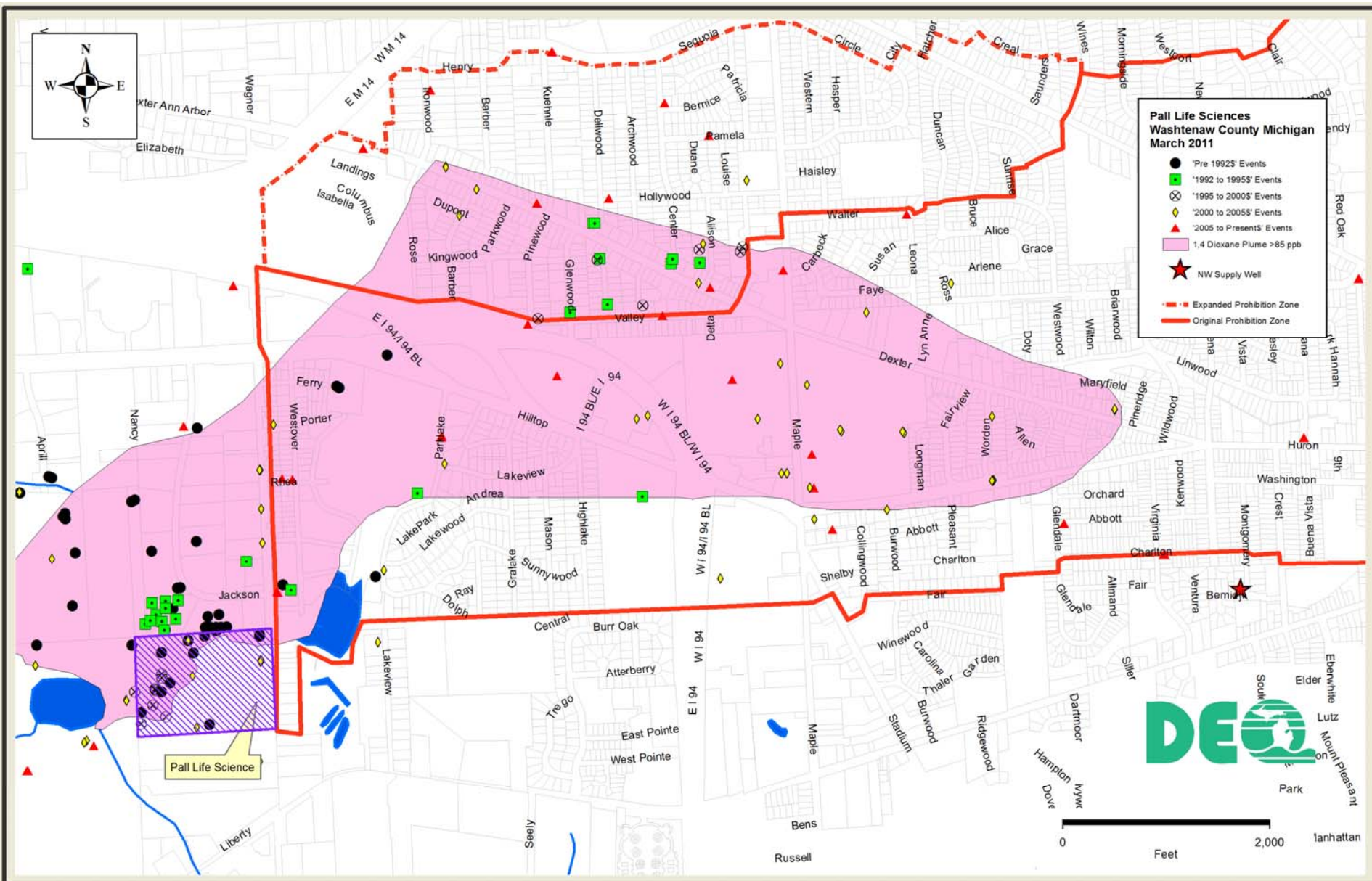
-  Original Prohibition Zone
 Expanded Prohibition Zone





Gelman – Prohibition Zone Expansion – March 2011

Gelman - Combined Evergreen & Unit E Plumes



LEGEND

Proposed Pipeline

Existing Pipeline

Extraction Wells



0 250 500
Feet

