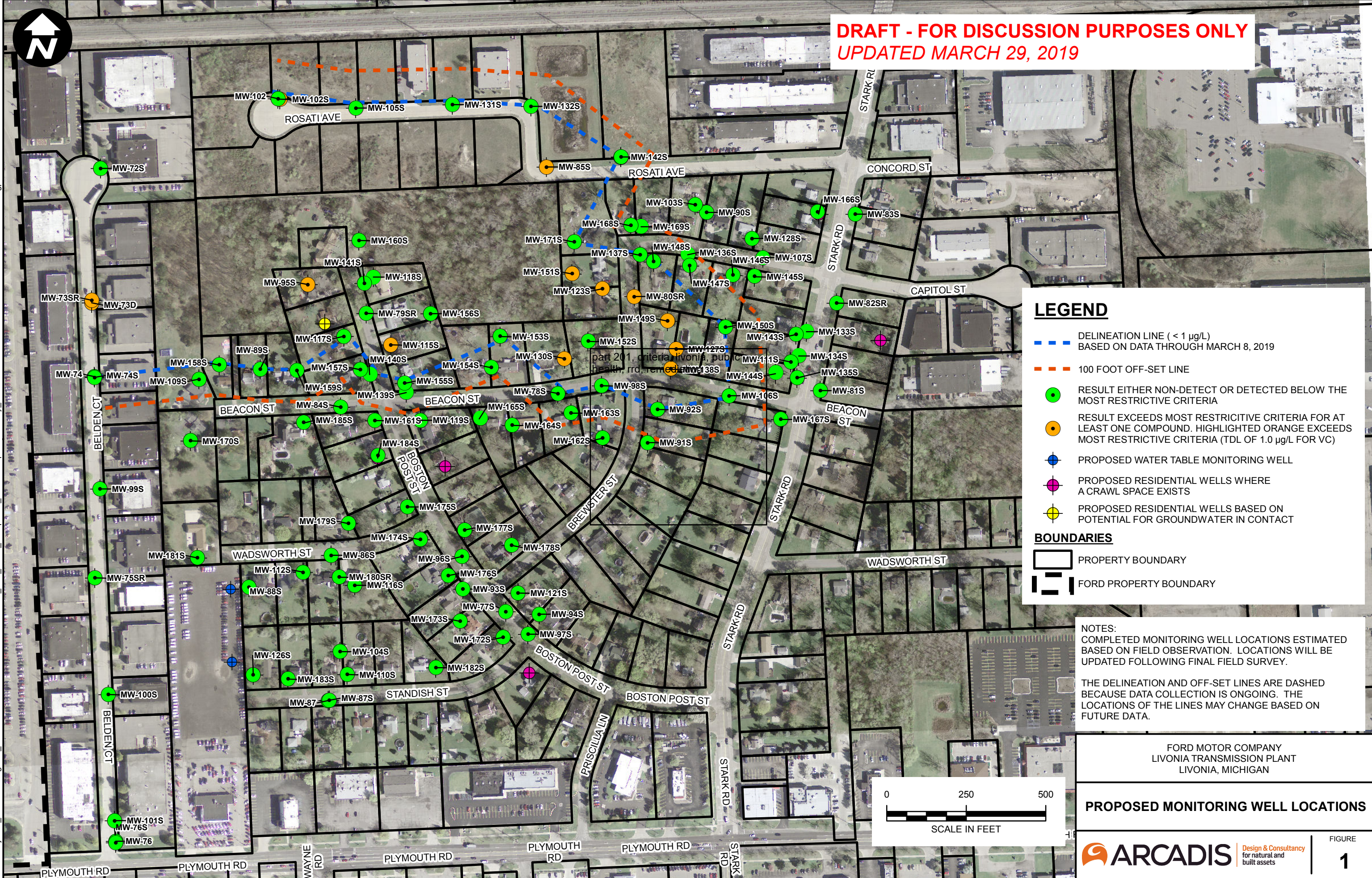




DRAFT - FOR DISCUSSION PURPOSES ONLY
UPDATED MARCH 29, 2019

CITY: Novi; DIV: ENV; DB: MG; PIC: R. ELLIS; PM: K. HINSKEY; PROJECT NUMBER: M1001322.0001; COORDINATE SYSTEM: NAD 1983 StatePlane Michigan South FIPS 2113 Feet Intl; Z:\GIS\Projects\ENV\Novi\Brighton_MIFordLivonia\GIS\docs\2019-03\Offsite_MW_Instal\Completed_Contours\UpdatedSurvey_03282019.mxd; PLOT TED: 3/28/2019 1:12:03 PM; BY: kgpeters



LEGEND

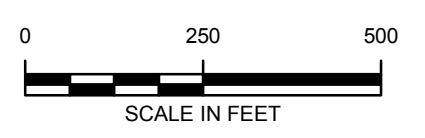
- DELINEATION LINE (< 1 µg/L) BASED ON DATA THROUGH MARCH 8, 2019
- 100 FOOT OFF-SET LINE
- RESULT EITHER NON-DETECT OR DETECTED BELOW THE MOST RESTRICTIVE CRITERIA
- RESULT EXCEEDS MOST RESTRICTIVE CRITERIA FOR AT LEAST ONE COMPOUND. HIGHLIGHTED ORANGE EXCEEDS MOST RESTRICTIVE CRITERIA (TDL OF 1.0 µg/L FOR VC)
- ⊕ PROPOSED WATER TABLE MONITORING WELL
- ⊕ PROPOSED RESIDENTIAL WELLS WHERE A CRAWL SPACE EXISTS
- ⊕ PROPOSED RESIDENTIAL WELLS BASED ON POTENTIAL FOR GROUNDWATER IN CONTACT

BOUNDARIES

- ▭ PROPERTY BOUNDARY
- ▭ FORD PROPERTY BOUNDARY

NOTES:
COMPLETED MONITORING WELL LOCATIONS ESTIMATED BASED ON FIELD OBSERVATION. LOCATIONS WILL BE UPDATED FOLLOWING FINAL FIELD SURVEY.

THE DELINEATION AND OFF-SET LINES ARE DASHED BECAUSE DATA COLLECTION IS ONGOING. THE LOCATIONS OF THE LINES MAY CHANGE BASED ON FUTURE DATA.



FORD MOTOR COMPANY
LIVONIA TRANSMISSION PLANT
LIVONIA, MICHIGAN

PROPOSED MONITORING WELL LOCATIONS