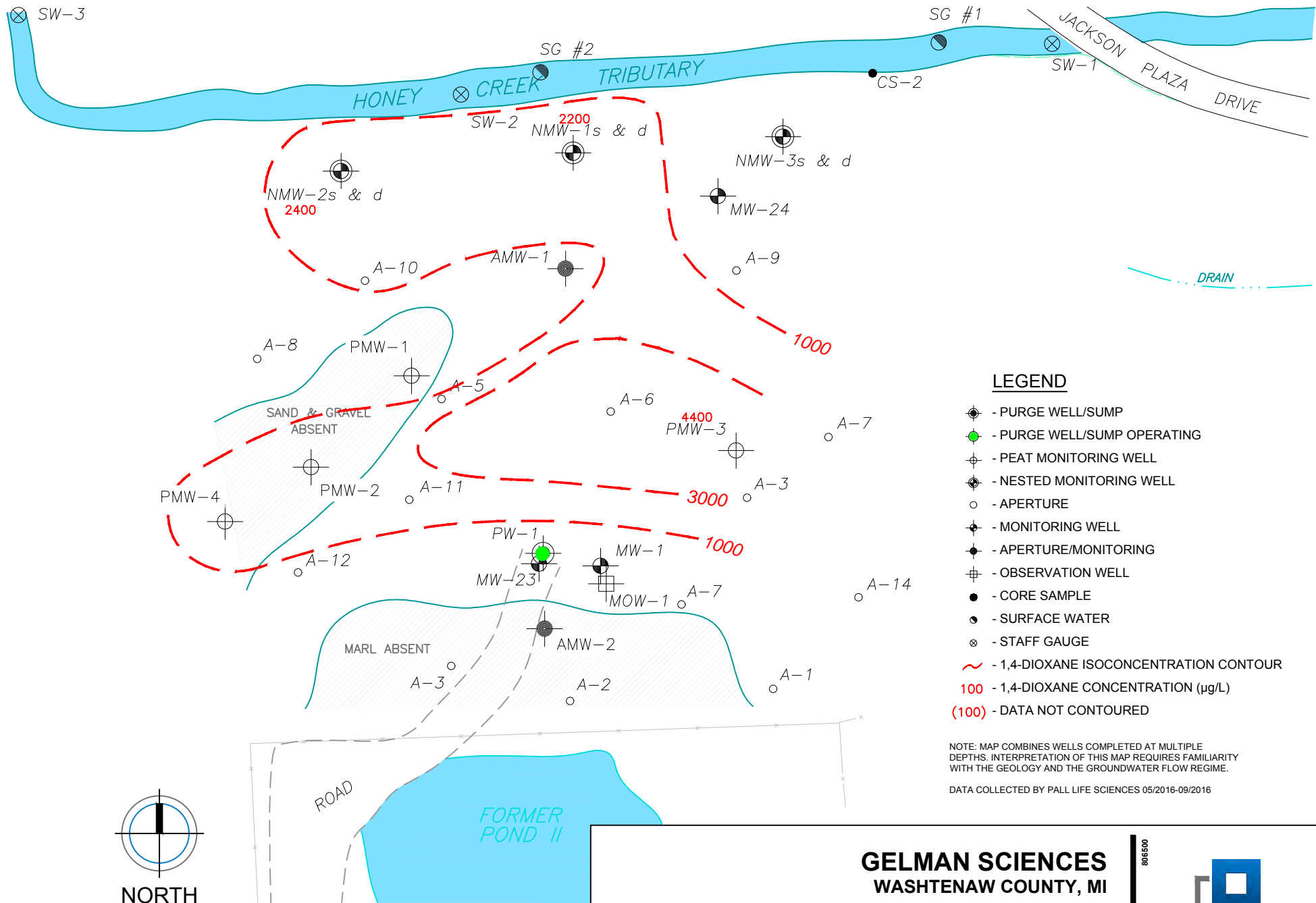


amberg/Mi:\Proj\05010-810000\Pall Corp\CAD_2009\Sheets\Pall Site Peat Maps\16\0417_PEAT_ISO.dwg



LEGEND

- PURGE WELL/SUMP
- PURGE WELL/SUMP OPERATING
- PEAT MONITORING WELL
- NESTED MONITORING WELL
- APERTURE
- MONITORING WELL
- APERTURE/MONITORING
- OBSERVATION WELL
- CORE SAMPLE
- SURFACE WATER
- STAFF GAUGE
- 1,4-DIOXANE ISOCONCENTRATION CONTOUR
- 100** - 1,4-DIOXANE CONCENTRATION (µg/L)
- (100)** - DATA NOT CONTOURED

NOTE: MAP COMBINES WELLS COMPLETED AT MULTIPLE DEPTHS. INTERPRETATION OF THIS MAP REQUIRES FAMILIARITY WITH THE GEOLOGY AND THE GROUNDWATER FLOW REGIME.
 DATA COLLECTED BY PALL LIFE SCIENCES 05/2016-09/2016

GELMAN SCIENCES
 WASHTENAW COUNTY, MI

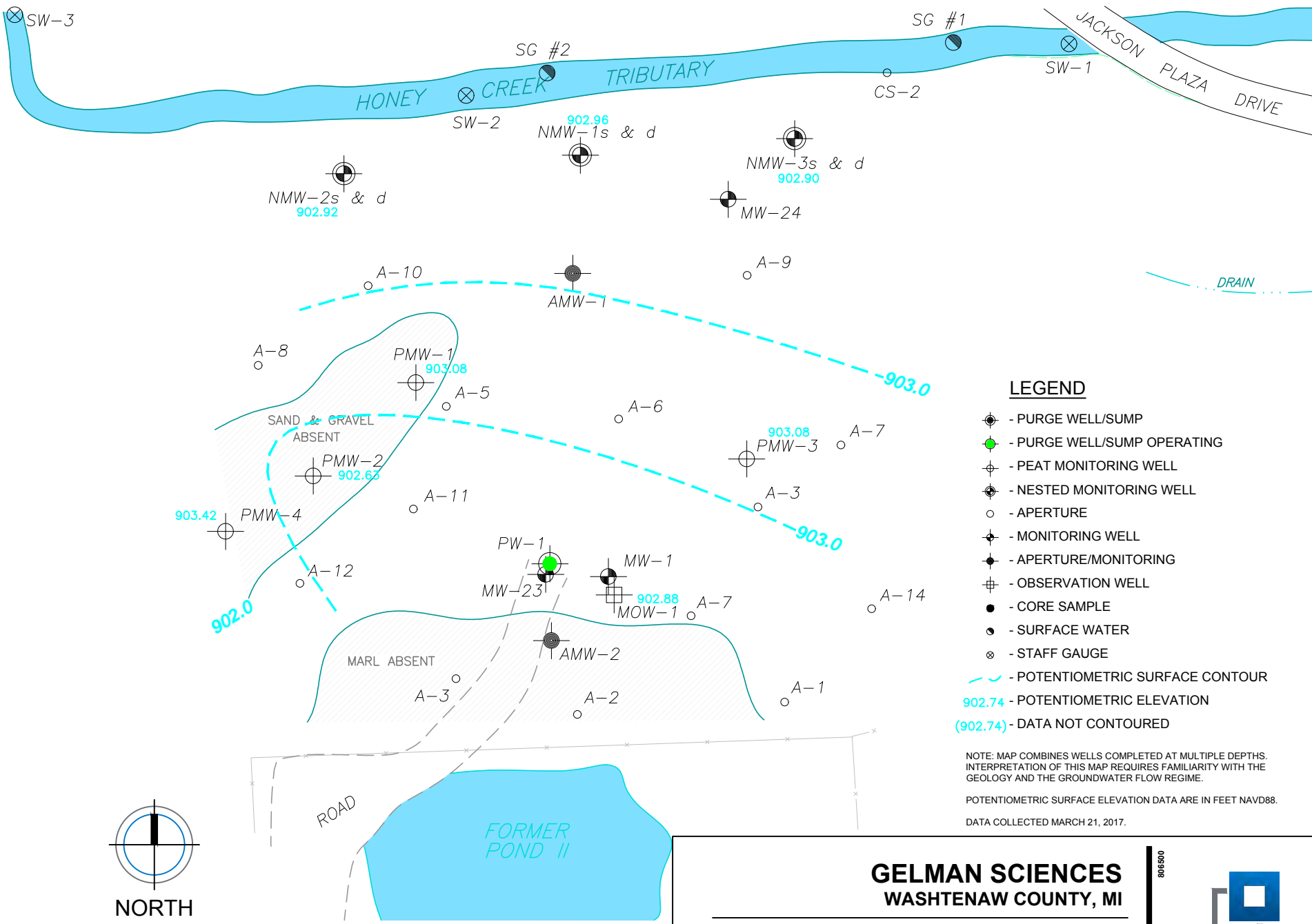
1,4-DIOXANE ISOCONCENTRATION MAP

MARSHY AREA - PEAT
 MAY 2016 - SEPTEMBER 2016

806500
 F&V PROJECT NO.



ambergp/M:\Pro\805010-810000\806500 Pall Corp\CAD 2009\Sheets\Pall Site Peat Maps\16\0417_PEAT_PSC.dwg



- LEGEND**
- PURGE WELL/SUMP
 - PURGE WELL/SUMP OPERATING
 - PEAT MONITORING WELL
 - NESTED MONITORING WELL
 - APERTURE
 - MONITORING WELL
 - APERTURE/MONITORING
 - OBSERVATION WELL
 - CORE SAMPLE
 - SURFACE WATER
 - STAFF GAUGE
 - POTENTIOMETRIC SURFACE CONTOUR
 - 902.74 - POTENTIOMETRIC ELEVATION
 - (902.74) - DATA NOT CONTOURED

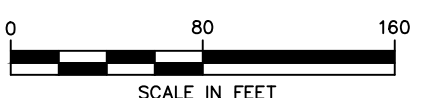
NOTE: MAP COMBINES WELLS COMPLETED AT MULTIPLE DEPTHS. INTERPRETATION OF THIS MAP REQUIRES FAMILIARITY WITH THE GEOLOGY AND THE GROUNDWATER FLOW REGIME.

POTENTIOMETRIC SURFACE ELEVATION DATA ARE IN FEET NAVD88.

DATA COLLECTED MARCH 21, 2017.



NORTH



SCALE IN FEET

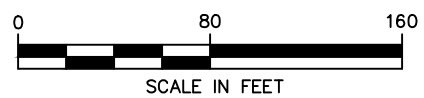
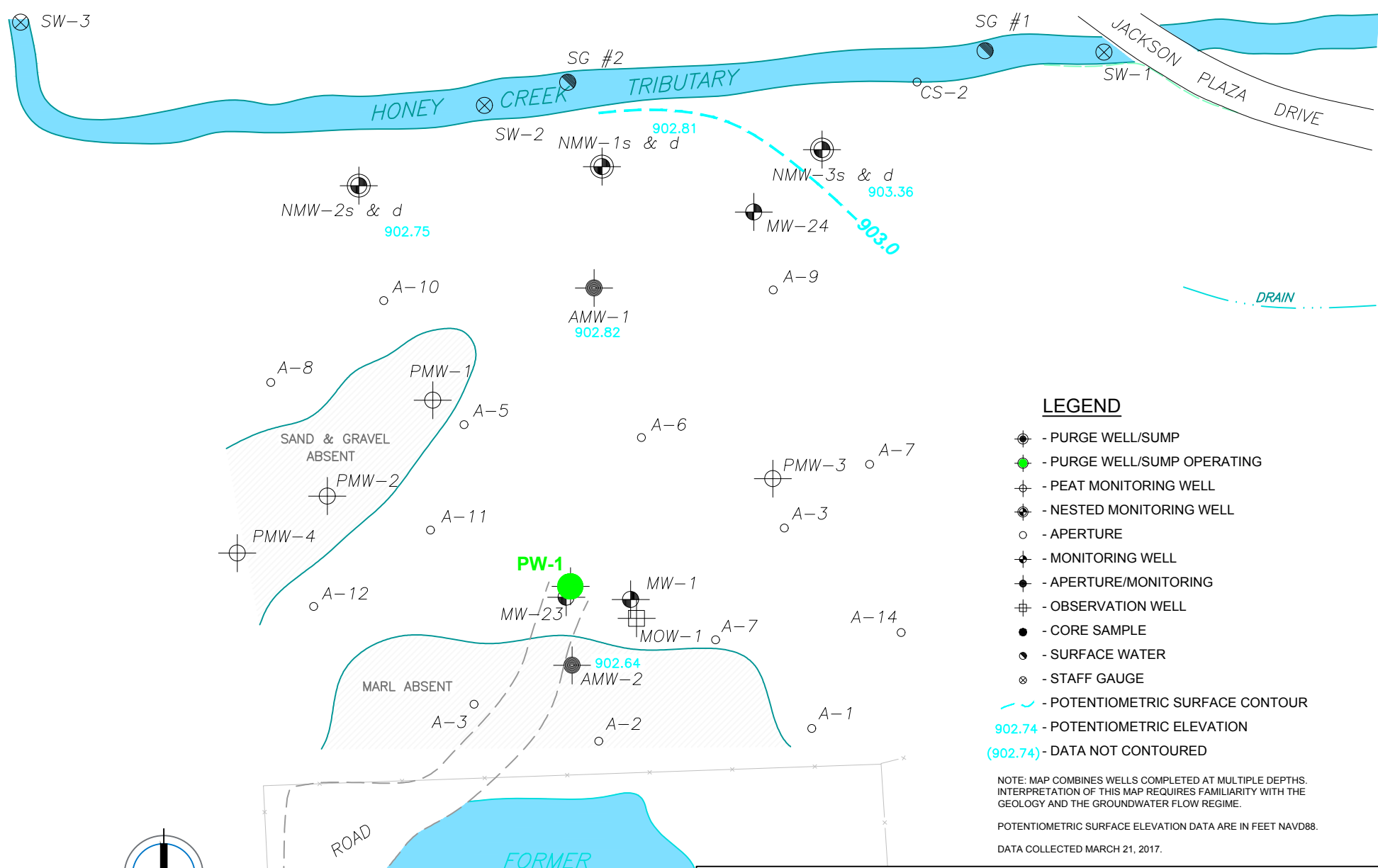
GELMAN SCIENCES
WASHTENAW COUNTY, MI

POTENTIOMETRIC SURFACE MAP
MARSHY AREA - PEAT
MARCH 21, 2017

806500
 F&V PROJECT NO.



amberp/Mi:\Proj\05010-810000\806500 Pall Corp\CAD\2009\Sheets\Pall Site Sand Maps\16\0417_SAND_PSC.dwg

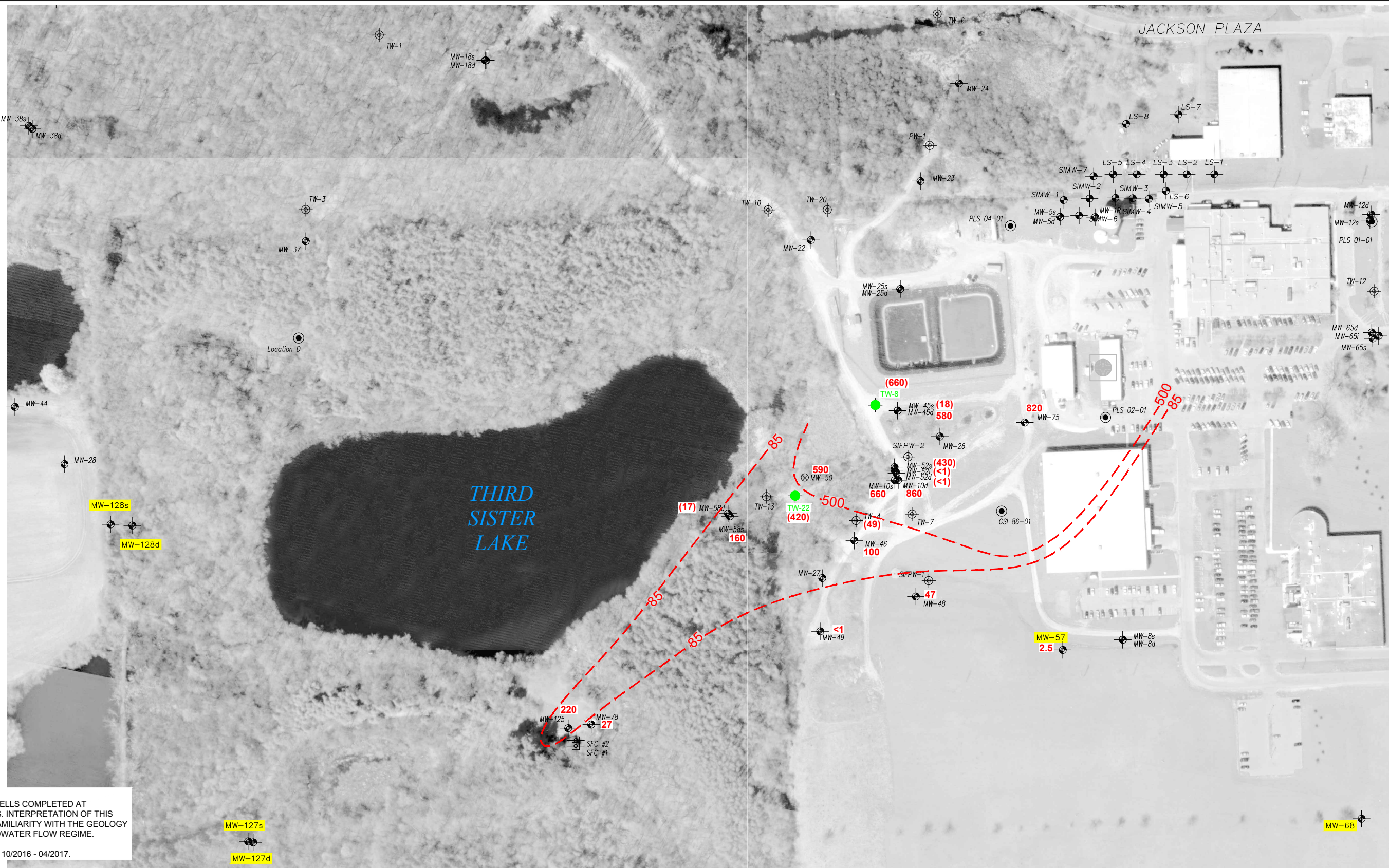


GELMAN SCIENCES
 WASHTENAW COUNTY, MI

POTENTIOMETRIC SURFACE MAP
 MARSHY AREA - SAND & GRAVEL
 MARCH 21, 2017

806500
 F&V PROJECT NO.

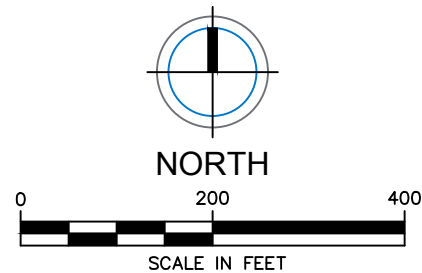




NOTES:
 MAP COMBINES WELLS COMPLETED AT MULTIPLE DEPTHS. INTERPRETATION OF THIS MAP REQUIRES FAMILIARITY WITH THE GEOLOGY AND THE GROUNDWATER FLOW REGIME.

DATA COLLECTED 10/2016 - 04/2017.

AERIAL PHOTO TAKEN: APRIL 2002

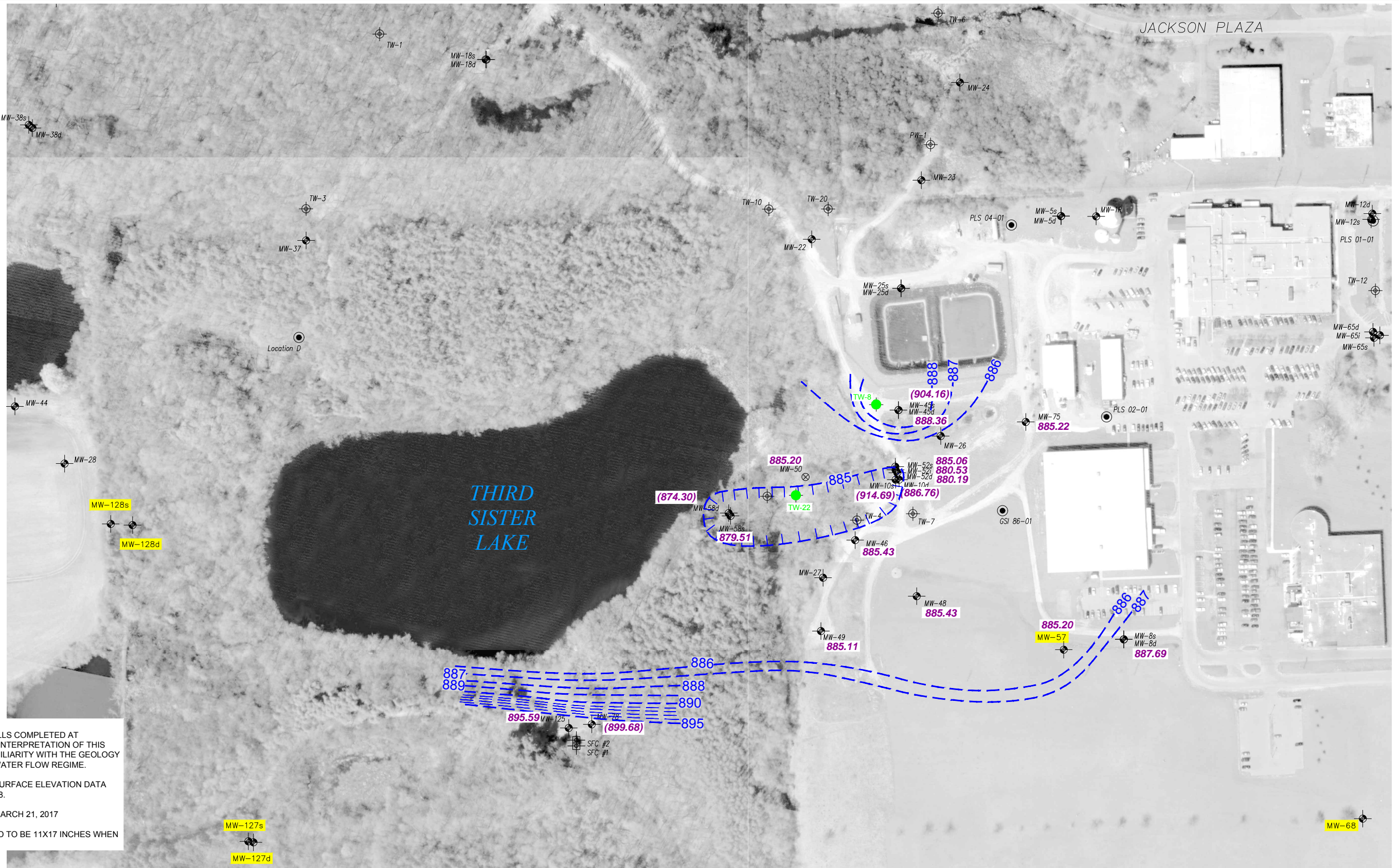


LEGEND

- ⊕ - MONITOR WELL
- ⊕ - FORMER RESIDENTIAL WELL ROUTINELY MONITORED
- ⊕ - EXTRACTION WELL
- ⊕ - SW UNIT EXTRACTION WELL OPERATING
- ⊕ - TEMPORARY EXTRACTION WELL
- - - - 1,4 DIOXANE ISOCONCENTRATION CONTOUR (µg/L)
- 147 - 1,4 DIOXANE ISOCONCENTRATION (µg/L)
- (501) - DATA NOT CONTOURED
- MW-xx - COMPLIANCE MONITOR WELL

GELMAN SCIENCES
 WASHTENAW COUNTY, MI
1,4-DIOXANE ISOCONCENTRATION MAP
 SOUTHWEST PROPERTY
 OCTOBER 2016 - APRIL 2017





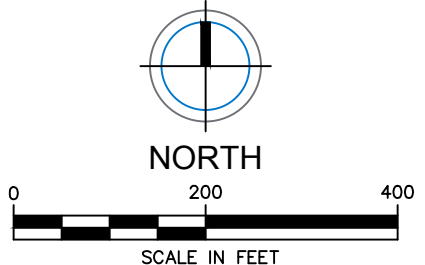
NOTES:
 MAP COMBINES WELLS COMPLETED AT MULTIPLE DEPTHS. INTERPRETATION OF THIS MAP REQUIRES FAMILIARITY WITH THE GEOLOGY AND THE GROUNDWATER FLOW REGIME.

POTENTIOMETRIC SURFACE ELEVATION DATA ARE IN FEET NAVD88.

DATA COLLECTED MARCH 21, 2017

FIGURE IS DESIGNED TO BE 11X17 INCHES WHEN PLOTTED.

AERIAL PHOTO TAKEN: APRIL 2002



- LEGEND**
- MONITOR WELL
 - FORMER RESIDENTIAL WELL ROUTINELY MONITORED
 - EXTRACTION WELL
 - SW UNIT EXTRACTION WELL OPERATING
 - TEMPORARY EXTRACTION WELL
 - POTENTIOMETRIC SURFACE CONTOUR
 - 886.79** - UNIT C₃ POTENTIOMETRIC SURFACE ELEVATION
 - (886.79)** - DATA NOT USED
 - MW-xx** - COMPLIANCE MONITOR WELL

GELMAN SCIENCES
 WASHTENAW COUNTY, MI

POTENTIOMETRIC SURFACE MAP
 SOUTHWEST PROPERTY
 MARCH 21, 2017



F&V PROJECT NO. 806500