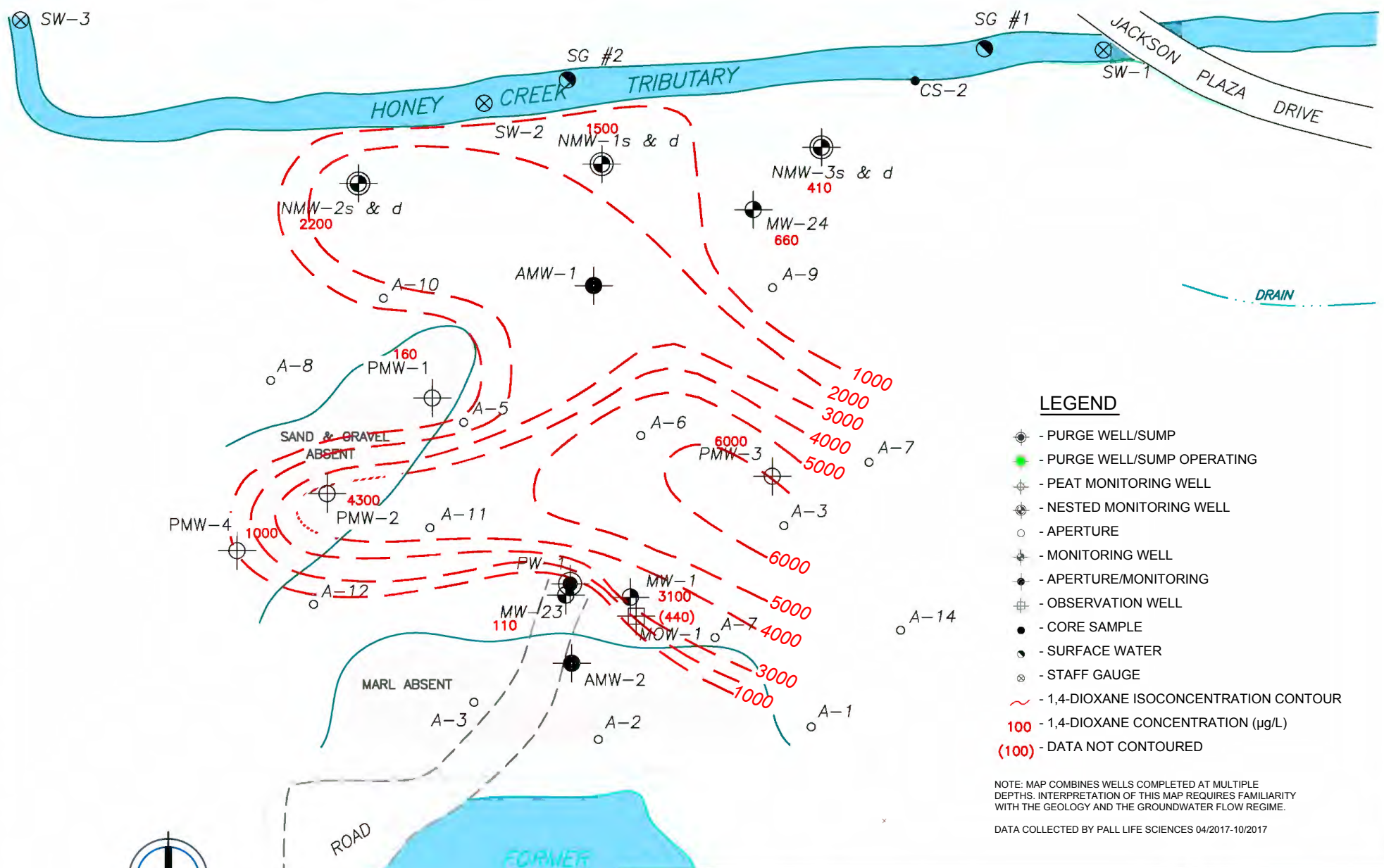


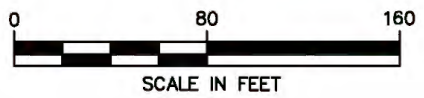
ambrp/M:\Pro\805010-810000\806500 Pall Corp\CAD\2009\Sheets\Pall Site Peat Mops\17\1017_PEAT_ISO.dwg



LEGEND

- PURGE WELL/SUMP
- PURGE WELL/SUMP OPERATING
- PEAT MONITORING WELL
- NESTED MONITORING WELL
- APERTURE
- MONITORING WELL
- APERTURE/MONITORING
- OBSERVATION WELL
- CORE SAMPLE
- SURFACE WATER
- STAFF GAUGE
- 1,4-DIOXANE ISOCONCENTRATION CONTOUR
- 100** - 1,4-DIOXANE CONCENTRATION (µg/L)
- (100)** - DATA NOT CONTOURED

NOTE: MAP COMBINES WELLS COMPLETED AT MULTIPLE DEPTHS. INTERPRETATION OF THIS MAP REQUIRES FAMILIARITY WITH THE GEOLOGY AND THE GROUNDWATER FLOW REGIME.
 DATA COLLECTED BY PALL LIFE SCIENCES 04/2017-10/2017



GELMAN SCIENCES
 WASHTENAW COUNTY, MI

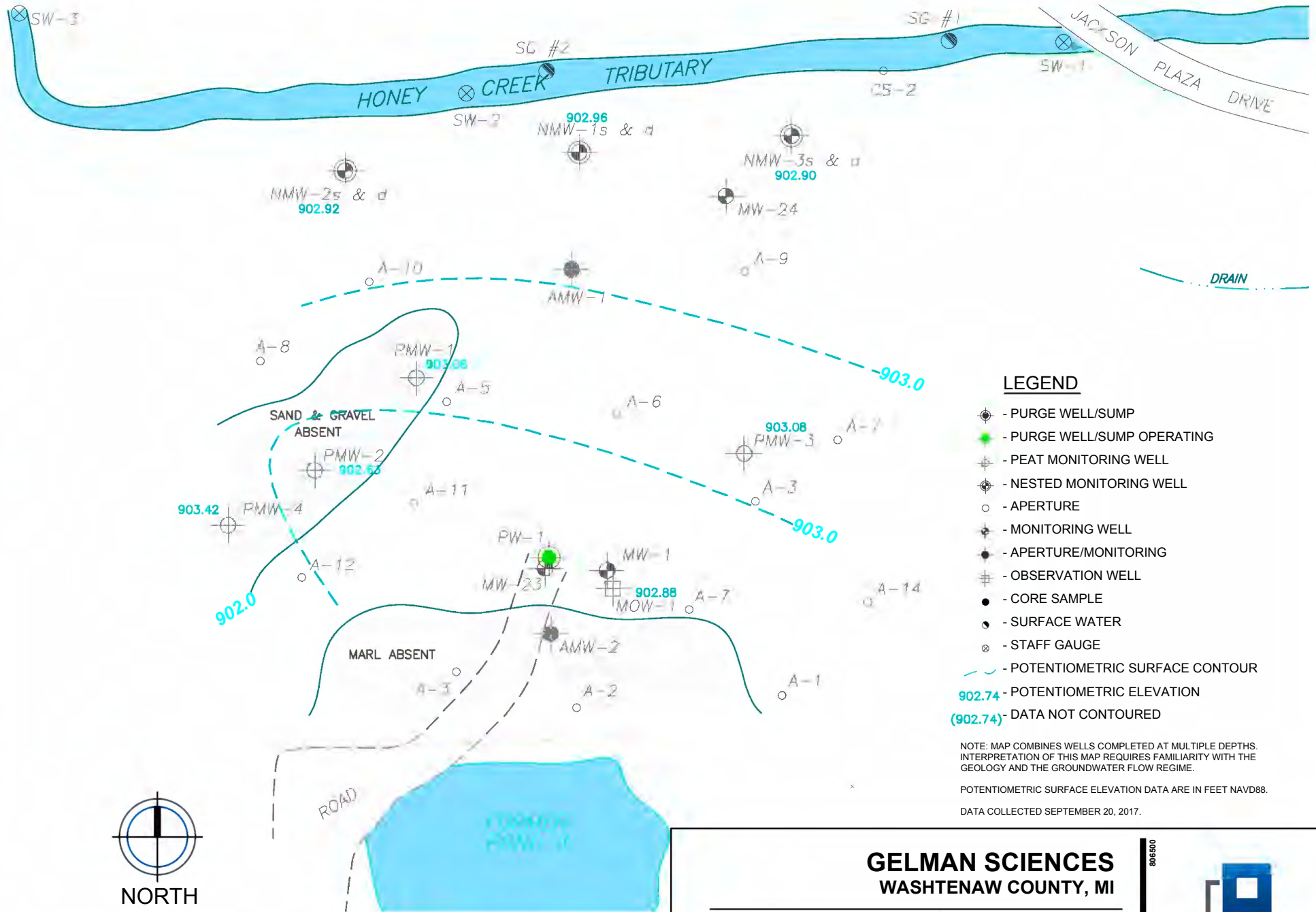
1,4-DIOXANE ISOCONCENTRATION MAP

MARSHY AREA - PEAT
 APRIL 2017 - OCTOBER 2017

806500
 F&V PROJECT NO.



ambrp\Mi:\Proj\805010-810000\806500 Pall Corp\CAD_2009\Sheets\Pall Site Peat Maps\171017_PEAT_PSC.dwg



LEGEND

- PURGE WELL/SUMP
- PURGE WELL/SUMP OPERATING
- PEAT MONITORING WELL
- NESTED MONITORING WELL
- APERTURE
- MONITORING WELL
- APERTURE/MONITORING
- OBSERVATION WELL
- CORE SAMPLE
- SURFACE WATER
- STAFF GAUGE
- POTENTIOMETRIC SURFACE CONTOUR
- 902.74 - POTENTIOMETRIC ELEVATION
- (902.74) - DATA NOT CONTOURED

NOTE: MAP COMBINES WELLS COMPLETED AT MULTIPLE DEPTHS. INTERPRETATION OF THIS MAP REQUIRES FAMILIARITY WITH THE GEOLOGY AND THE GROUNDWATER FLOW REGIME.

POTENTIOMETRIC SURFACE ELEVATION DATA ARE IN FEET NAVD88.

DATA COLLECTED SEPTEMBER 20, 2017.

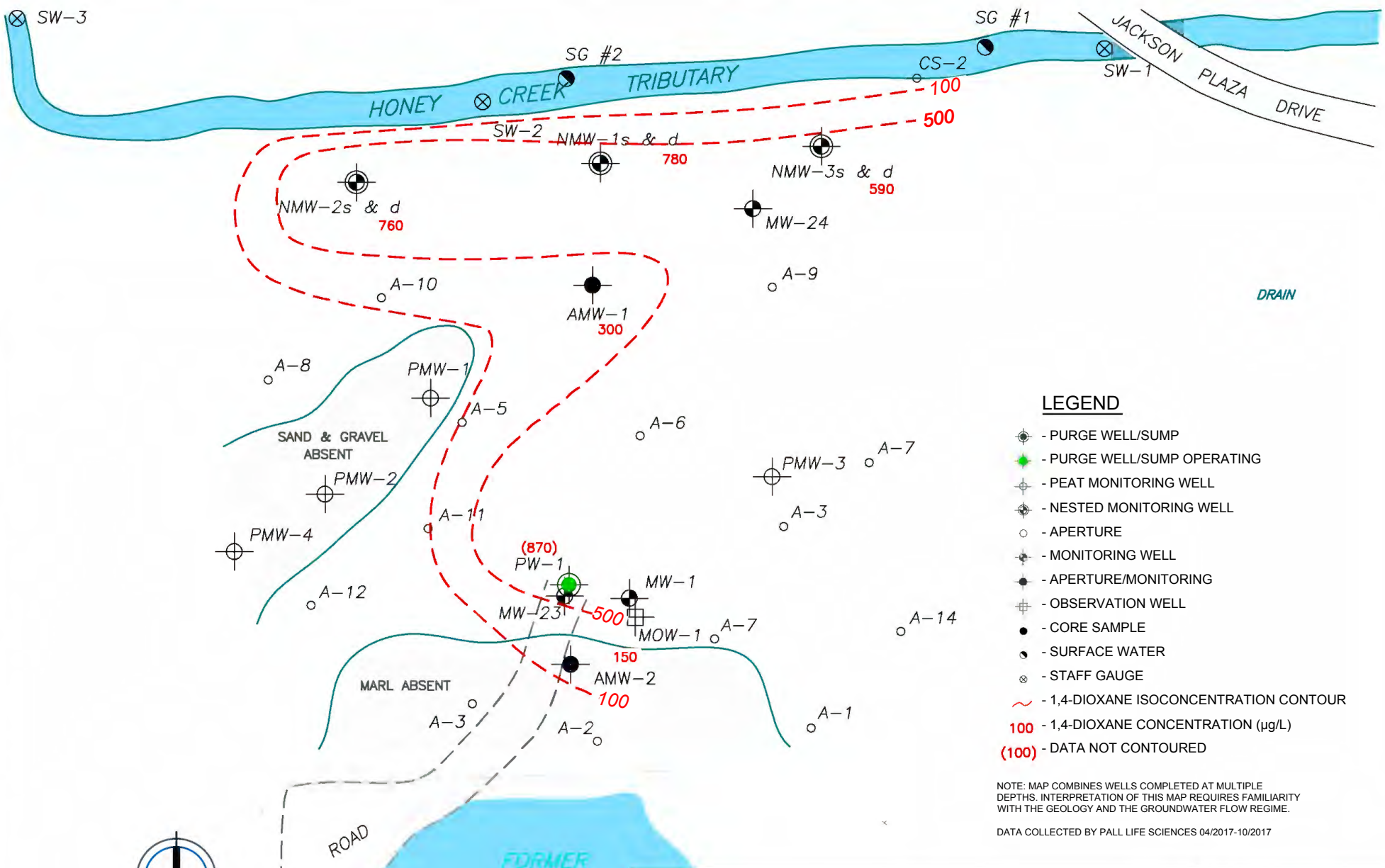
GELMAN SCIENCES
WASHTENAW COUNTY, MI

POTENTIOMETRIC SURFACE MAP
MARSHY AREA - PEAT
SEPTEMBER 20, 2017

806500
 F&V PROJECT NO.



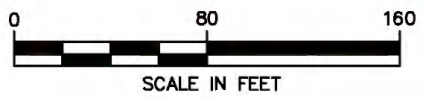
ambrp/M:\Pro\805010-810000\806500 Pall Corp\CAD 2009\Sheets\Pall Site Sand Maps\171017_SAND_ISO.dwg



LEGEND

- PURGE WELL/SUMP
- PURGE WELL/SUMP OPERATING
- PEAT MONITORING WELL
- NESTED MONITORING WELL
- APERTURE
- MONITORING WELL
- APERTURE/MONITORING
- OBSERVATION WELL
- CORE SAMPLE
- SURFACE WATER
- STAFF GAUGE
- 1,4-DIOXANE ISOCONCENTRATION CONTOUR
- 100** - 1,4-DIOXANE CONCENTRATION (µg/L)
- (100)** - DATA NOT CONTOURED

NOTE: MAP COMBINES WELLS COMPLETED AT MULTIPLE DEPTHS. INTERPRETATION OF THIS MAP REQUIRES FAMILIARITY WITH THE GEOLOGY AND THE GROUNDWATER FLOW REGIME.
 DATA COLLECTED BY PALL LIFE SCIENCES 04/2017-10/2017



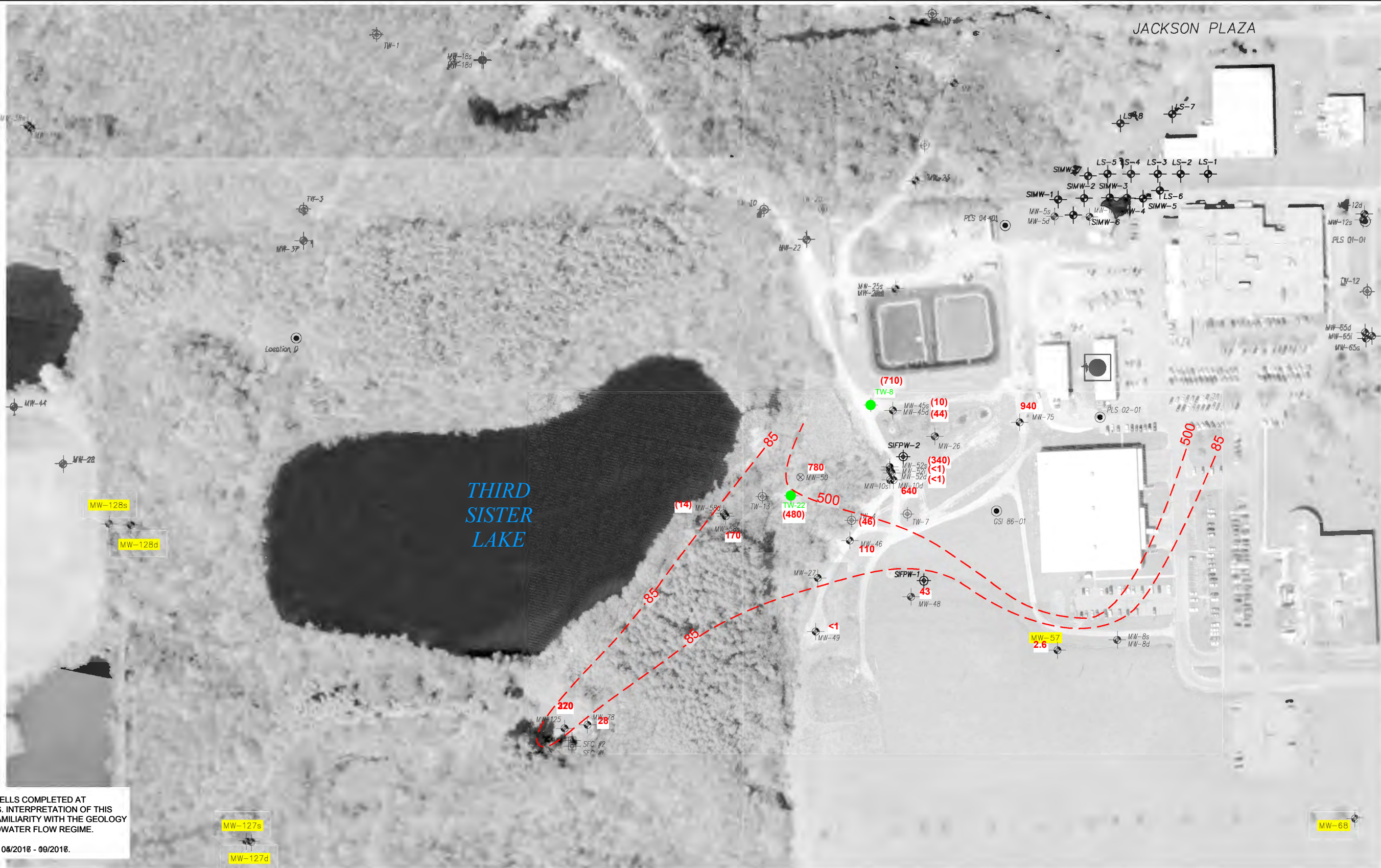
GELMAN SCIENCES
 WASHTENAW COUNTY, MI

1,4-DIOXANE ISOCONCENTRATION MAP

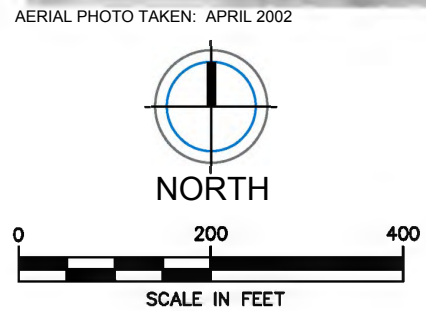
MARSHY AREA - SAND & GRAVEL
 APRIL 2017 - OCTOBER 2017

806500
F&V PROJECT NO.





NOTES:
 MAP COMBINES WELLS COMPLETED AT MULTIPLE DEPTHS. INTERPRETATION OF THIS MAP REQUIRES FAMILIARITY WITH THE GEOLOGY AND THE GROUNDWATER FLOW REGIME.
 DATA COLLECTED 06/2018 - 09/2018.



- LEGEND**
- MONITOR WELL
 - FORMER RESIDENTIAL WELL ROUTINELY MONITORED
 - EXTRACTION WELL
 - SW UNIT EXTRACTION WELL OPERATING
 - TEMPORARY EXTRACTION WELL
 - 1,4 DIOXANE ISOCONCENTRATION CONTOUR (µg/L)
 - 147** - 1,4 DIOXANE ISOCONCENTRATION (µg/L)
 - (501)** - DATA NOT CONTOURED
 - MW-xx** - COMPLIANCE MONITOR WELL

GELMAN SCIENCES
 WASHTENAW COUNTY, MI

1,4-DIOXANE ISOCONCENTRATION MAP
 SOUTHWEST PROPERTY
 APRIL 2017 - OCTOBER 2017

806500
 F&V PROJECT NO. **F&V**

