

Subdivisions - Expanded PZ

East of Maple	
Subdivision	Plat info
Arbor Heights #2	platted in 1950 in City
Arbor Heights #3	platted in 1954 in City
Maple Ridge	platted in 1955 in City
Martin Acres	platted in 1953 in City
Westaire Terrace	platted in 1955 in City
Westport Hills Subdivision #3	platted in 1953 in City

West of Maple	
Subdivision	Plat info
Dexter Avenue Hills	platted in 1925 in Scio Twp
The Evergreens	platted in 1927 in Scio Twp
Evergreen Little Farms	platted in 1923 in Scio Twp
Resubdivision of Evergreen Little Farms	platted in 1924 in Scio Twp
Hollywood Park	platted in 1959 in City
Hollywood Park No. 2	platted in 1961 in City
Hollywood Park No. 3	platted in 1964 in City
Scioto Hills	platted in 1926 in Scio Twp
Scioto Hills Number One	platted in 1929 in Scio Twp

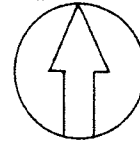
ARBOR HEIGHTS SUB'N. NO. 2

OF PART OF THE S.W. 1/4 OF SEC. 19, T.2S., R.6E.
 CITY OF ANN ARBOR, WASHTENAW CO. MICH.

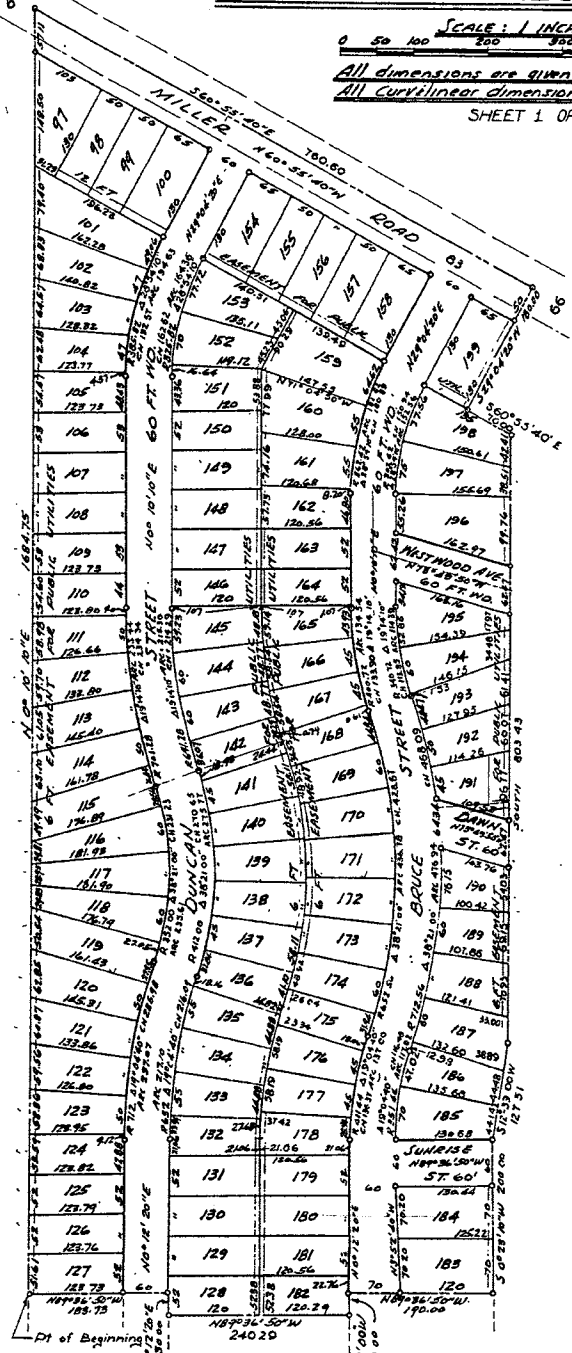
SCALE: 1 INCH = 100 FEET
 0 50 100 150 200 250 300 350 400

All dimensions are given in feet and decimals thereof
 All curvilinear dimensions are given along the arc

SHEET 1 OF 2 SHEETS



GWINN M ORR
 REG. LAND SURVEYOR
 WARREN MICHIGAN



DESCRIPTION

The land embraced in the annexed plat of "ARBOR HEIGHTS SUB'N. NO. 2 OF PART OF THE S.W. 1/4 OF SEC. 19, T.2 S., R.6 E., CITY OF ANN ARBOR, WASHTENAW CO., MICH." is described as follows: Beginning at the N.W. corner of Arbor Heights, a subdivision in the City of Ann Arbor, Washtenaw Co., Mich. as recorded in L.10 P.53 of Washtenaw Co. plats, said point of beginning being distant from the S. 1/4 corner of said Sec. 19, W. 89 deg. 36 min. 50 sec. W. along the S. line of said Sec. 19, 1358.16 ft. to the S.W. corner of said Arbor Heights Sub. and thence S. 0 deg. 12 min. 20 sec. E. along the West line of said Arbor Heights Sub. 820.98 ft.; thence from said point of beginning N. 0 deg. 10 min. 10 sec. E. 1684.75 ft. to the center line of Miller Road; thence S. 60 deg. 55 min. 40 sec. E. along the said center line of Miller Road 760.60 ft.; thence S. 29 deg. 04 min. 20 sec. W. 180.00 ft.; thence S. 60 deg. 55 min. 40 sec. E. 70.00 ft.; thence South 803.43 ft.; thence S. 12 deg. 39 min. 00 sec. W. 127.51 ft.; thence S. 0 deg. 23 min. 10 sec. W. 200.00 ft. to a point on a North line of said Arbor Heights Sub.; thence N. 89 deg. 36 min. 50 sec. W. along a northerly line of said Arbor Heights Sub. 190.00 ft.; thence S. 0 deg. 43 min. 00 sec. W. along a westerly line of said Arbor Heights Sub. 30.00 ft.; thence N. 89 deg. 36 min. 50 sec. W. along a northerly line of said Arbor Heights Sub. 240.29 ft.; thence W. 0 deg. 12 min. 20 sec. E. along an easterly line of said Arbor Heights Sub. 30.00 ft.; thence N. 89 deg. 36 min. 50 sec. W. along a northerly line of said Arbor Heights Sub. 183.73 ft. to the point of beginning.

DEDICATION

KNOW ALL MEN BY THESE PRESENTS, That we, F. Everett Ross and Iva L. Ross, his wife, as proprietors, have caused the land embraced in the annexed plat to be surveyed, laid out, and platted, to be known as "ARBOR HEIGHTS SUB'N. NO. 2 OF PART OF THE S.W. 1/4 OF SEC. 19, T.2 S., R.6 E., CITY OF ANN ARBOR, WASHTENAW CO., MICH." and that the streets as shown on said plat are hereby dedicated to the use of the public, and that the easements indicated on said plat are hereby reserved for the use of public utilities, and that no permanent structures are to be erected within the lines of said easements.

Signed and Sealed
 In presence of:

R. Duncan Hole
 R. Duncan Hole
D. Bruce Hole
 D. Bruce Hole

F. Everett Ross
 F. Everett Ross
Iva L. Ross
 Iva L. Ross

ACKNOWLEDGMENT

STATE OF MICHIGAN) ss
 County of Washtenaw)

On this 19 day of August, 1950
 before me, a Notary Public in and for said county, personally came the above named F. Everett Ross and Iva L. Ross, his wife, known to me to be the persons who executed the above dedication, and acknowledged same to be their free act and deed.

Phyllis M. Mast
 Clerk of Court
 Notary Public, Washtenaw Co., Mich.
 My commission expires May 12-1952

SURVEYOR'S CERTIFICATE

I hereby certify that the plat herein delineated is a correct one and that permanent metal monuments consisting of bars not less than one-half inch in diameter and 48 inches in length, encased in a concrete cylinder at least four inches in diameter and 48 inches in depth have been placed at points marked thus (o) as shown on said plat at all angles in the boundaries of the land platted, at all the intersections of streets, and at the intersections of streets with the boundaries of the plat as shown on said plat.

Edwin M. Orr
 Edwin M. Orr, Registered Land Surveyor

CERTIFICATE OF MUNICIPAL APPROVAL

This plat was approved by the Common Council of the City of Ann Arbor at a meeting held August 7 1950

Fred J. Looker
 Fred J. Looker, Clerk

ARBOR HEIGHTS SUB'N. NO. 2
OF PART OF THE S.W. 1/4 OF SEC. 19, T. 2 S., R. 6 E.
CITY OF ANN ARBOR, WASHTENAW CO. MICH.

SHEET 2 OF 2 SHEETS

EDWIN M. ODD
REG. LAND SURVEYOR
DEARBORN, MICHIGAN

**CERTIFICATE OF APPROVAL BY THE
CITY PLANNING COMMISSION**

This plat was approved by the Planning Commission of the City of Ann Arbor at a meeting held April 25th, 1950.

John R. McMillen
 John R. McMillen, Chairman
Frederick H. Mumber
 Frederick H. Mumber, Secretary

**COUNTY TREASURER CERTIFICATE
OFFICE OF COUNTY TREASURER, WASHTENAW COUNTY**

I hereby certify that there are no tax liens on titles held by the State on the lands described hereon, and that there are no tax liens or titles held by individuals on such lands for the five years preceding the 25th day of August, 1950, and that the taxes for said period of five years are all paid, as shown by the records of this office except _____.

_____ This certificate does not apply to taxes, if any, now in process of collection by township, city, or village collecting offices.

W. F. Vermer
 County Treasurer
 W. F. Vermer

**CERTIFICATE OF APPROVAL BY THE
BOARD OF PUBLIC WORKS**

This plat was approved by the Board of Public Works of the City of Ann Arbor at a meeting held August 4th, 1950.

Fred J. Locker
 Fred J. Locker, Clerk

APPROVAL BY BOARD OF COUNTY AUDITORS

Approved by the Board of County Auditors of Washtenaw County, Michigan, this 1st day of September, 1950.

J. Martin Pongy

John C. Schaf

HEREBY CERTIFY THAT THIS COPY IS A TRUE COPY OF THE MAP OR PLAT FORWARDED THE REGISTER OF DEEDS FOR RECORDING.

COMPARED Sept 11 1950
Mayme Jewell Purdy
 Mayme Jewell Purdy DEPUTY AUDITOR GENERAL

Examined and Approved

Mayme Jewell Purdy
 Mayme Jewell Purdy DEPUTY AUDITOR GENERAL

FILED IN AUDITOR GENERAL'S DEPT.

Mayme Jewell Purdy
 Mayme Jewell Purdy DEPUTY AUDITOR GENERAL

COPY
 Register's Office
 (Washtenaw) County, Mich.
 Plat of Arbor Heights Sub'n. No. 2
 City of Ann Arbor
 was Recorded this 1st day of September, A.D., 1950 at 11 o'clock P. M. in Liber 11 of Washtenaw
 on Page 1-11
 ORIGINAL ON FILE

ARBOR HEIGHTS No 3

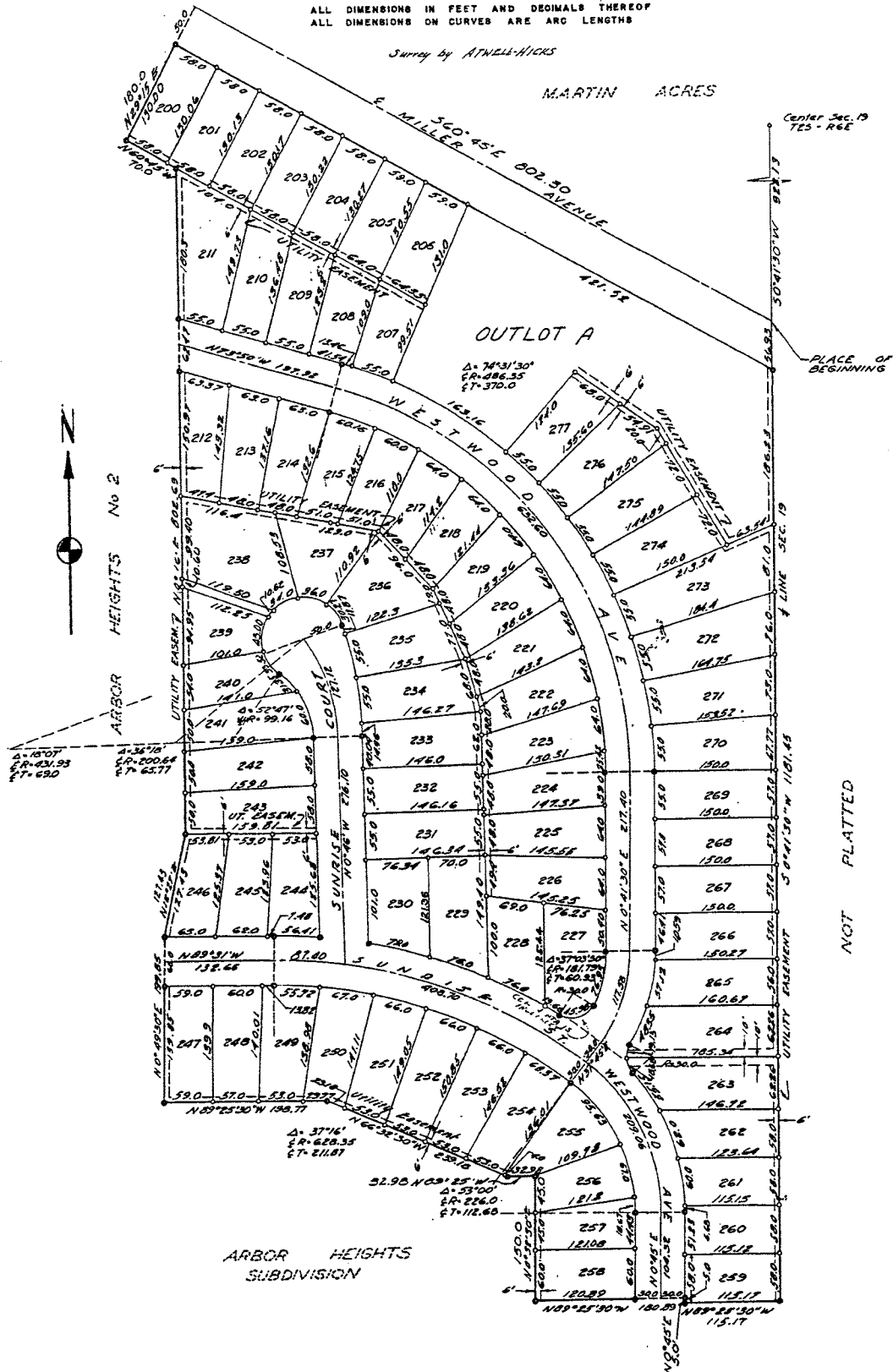
A SUBDIVISION OF PART OF THE E 1/2 OF THE SW 1/4 OF SECTION 19, TOWN 2 SOUTH, RANGE 6 EAST, CITY OF ANN ARBOR, WASHTENAW COUNTY, MICHIGAN



ALL DIMENSIONS IN FEET AND DECIMALS THEREOF
 ALL DIMENSIONS ON CURVES ARE ARC LENGTHS

Survey by ATWELL-HICKS

MARTIN ACRES



ARBOR HEIGHTS
 SUBDIVISION

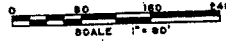
NOT PLATTED

JUL 7 1954

Sheet 2 of 2

ARBOR HEIGHTS No 3

A SUBDIVISION OF PART OF THE E 1/2 OF THE SW 1/4 OF SECTION 19, TOWN 2 SOUTH, RANGE 8 EAST, CITY OF ANN ARBOR, WASHTENAW COUNTY, MICHIGAN



ALL DIMENSIONS IN FEET AND DECIMALS THEREOF
ALL DIMENSIONS ON CURVES ARE ARC LENGTHS

DEDICATION

KNOW ALL MEN BY THESE PRESENTS, that we, F. Everett Ross and Iva L. Ross, his wife and Arbor Heights Building Corp. a Michigan corporation by S. Brooks Barron, President and Thomas A. Gallagher, Secretary as proprietors, have caused the land embraced in the annexed plat to be surveyed, laid out and platted, to be known as, ARBOR HEIGHTS, No. 3, a subdivision of part of the E 1/2 of the SW 1/4 of Section 19, Town 2 South, Range 8 East, City of Ann Arbor, Washtenaw County, Michigan and that the streets and alleys as shown on said plat are hereby dedicated to the use of the public.

Signed and Sealed in the presence of
Marie McCenter Notary Public
F. Everett Ross
Iva L. Ross

Arbor Heights Building Corp.
S. Brooks Barron President
Thomas A. Gallagher Secretary

ACKNOWLEDGMENT

STATE OF MICHIGAN
County of Washtenaw
On this 18th day of May, 1954, before me, a Notary Public in and for said County, personally came the above named F. Everett Ross and Iva L. Ross known to me to be the persons who executed the above dedication, and acknowledged the same to be their free act and deed.
Marie McCenter Notary Public
My Commission expires April 18, 1955

ACKNOWLEDGMENT

STATE OF MICHIGAN
County of Washtenaw
On this 18th day of May, A.D. 1954, before me, a Notary Public in and for said County appeared S. Brooks Barron and Thomas A. Gallagher as President and Secretary respectively of the Arbor Heights Building Corp. a Michigan corporation, and that the said affid to said instrument in the corporate seal of said corporation and that said instrument was signed and sealed in behalf of said corporation by authority of its Board of Directors and the said S. Brooks Barron and Thomas A. Gallagher acknowledged said instrument to be the free act and deed of said corporation.
Marie McCenter Notary Public
My Commission expires April 18, 1955

DESCRIPTION OF LAND PLATED

The land embraced in the annexed plat of ARBOR HEIGHTS No. 3, a subdivision of part of the E 1/2 of the SW 1/4 of Section 19, Town 2 South, Range 8 East, City of Ann Arbor, Michigan is described as follows:
Commencing at the center of Section 19, Town 2 South, Range 8 East, City of Ann Arbor, Michigan, thence S 0° 41' 30" W. 822.13 feet for a place of beginning, thence S 0° 41' 30" W. 1181.45 feet, thence N 89° 25' 30" W. 116.17 feet, thence N 0° 45' E. 5.0 feet, thence N 89° 25' 30" W. 180.89 feet, thence N 0° 32' 30" E. 150.0 feet, thence N 89° 25' W. 32.98 feet, thence N 89° 25' 30" E. 150.0 feet, thence N 0° 49' 30" E. 189.85 feet, thence N 12° 27' E. 127.43 feet, thence N 0° 18' E. 802.69 feet, thence N 60° 45' W. 70.0 feet, thence N 29° 15' E. 180.0 feet, thence S 60° 45' E. 802.30 feet to the place of beginning.

MUNICIPAL APPROVAL

This plat was approved by the Common Council of the City of Ann Arbor at a meeting held June 24, 1954 at 10:30 o'clock.
Fred J. Looker (Clk)

CERTIFICATE OF APPROVAL BY THE CITY PLANNING COMMISSION

This plat was approved by the Planning Commission of the City of Ann Arbor, Michigan, at a meeting held on the 25th day of May, 1954.
John E. Swisher, Jr. Chairman
Byrd E. Bennett Secretary

SURVEYOR'S CERTIFICATE

I hereby certify that the plat herein delineated is a correct one and that permanent metal monuments consisting of bars not less than one-half inch in diameter and 48 inches in length, or shorter bars of not less than one-half inch in diameter tapered over each end of least 6 inches with a general length of not less than 48 inches, secured in a concrete cylinder of least 4 inches in diameter and 48 inches in depth have been placed at points marked thereon as shown shown on all angles in the boundaries of the land platted, of all the intersections of streets, intersections of alleys, or of streets and alleys, and at the intersections of streets and alleys with the boundaries of the plat as shown on said plat.
Herbert S. Hicks
Registered Land Surveyor, or Registered Professional Engineer
Herbert S. Hicks, No. 1715

MUNICIPAL APPROVAL

This plat was approved by the Board of Public Works of the City of Ann Arbor at a meeting held June 9, 1954 at 10:30 o'clock.
Fred J. Looker (Clk)

APPROVAL BY COUNTY PLAT BOARD

This plat was approved on the 25th day of May, 1954, by the Washtenaw County Plat Board.
Thomas A. Fitzgerald County Register of Deeds
J. Martin Rempp Auditor
Adolph F. Gross Auditor
Herbert G. Loeblich Auditor

COUNTY TREASURER'S CERTIFICATE

Office of County Treasurer, Washtenaw County.
I hereby certify, that there are no tax liens or other claims against the State on the lands described herein, and that there are no tax liens or other claims held by individuals on said lands, for the five years preceding the 27th day of May, 1954 and that the taxes for said period of five years are all paid, as shown by the records of this office.
This certificate does not apply to taxes, if any, now in process of collection by township, city or village collecting officers.
W. F. Varner (County Treasurer)

COPY

Register's Office
Washtenaw County
Plat of Arbor Heights No 3
City of Ann Arbor
was Recorded this 27th day of July, A.D. 1954 at 10:00 o'clock
A.M. in Liber 12 of Plate 12
in Page 21-22
Theresa E. Hines
Clerk

I hereby certify that this map is a true copy of the map as filed in the office of the Register of Deeds for recording.
Date July 7, 1954
Filed in Liber 12 of Plate 12
Date July 12, 1954
Commissioner and Approved
Date July 7, 1954
John P. Hines
Register of Deeds

DATE: 04/13/1978
DRAWN BY: JAMES H. HARRIS, JR.
PROJECT: SCIO TO HILLS NO. 1

HOLLYWOOD PARK

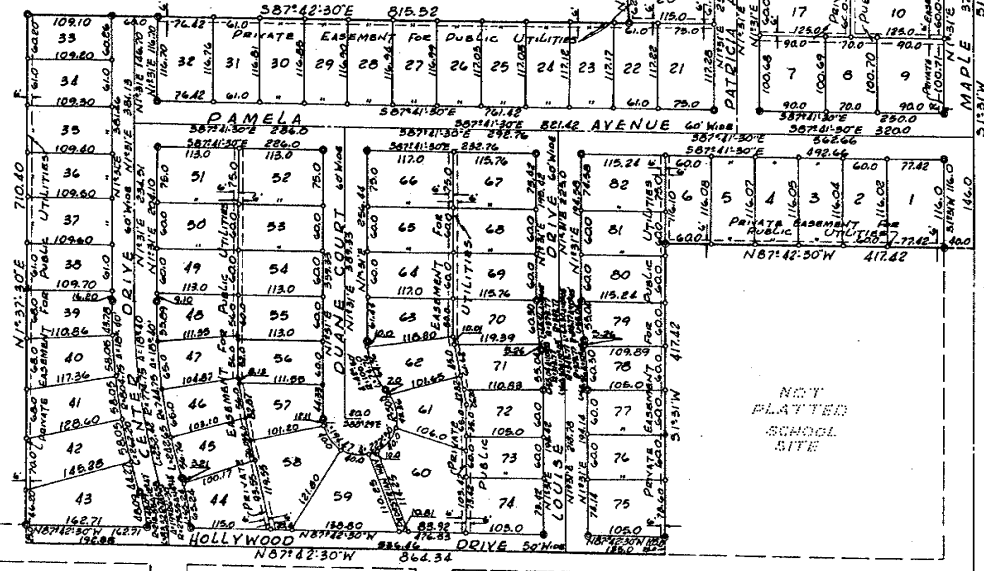
A SUBDIVISION OF PART OF THE SE 1/4 OF SECTION 24, T2S, R2E,
CITY OF ANN ARBOR, WASHTENAW COUNTY, MICHIGAN



ALL DIMENSIONS IN FEET AND DECIMALS THEREOF
ALL DIMENSIONS ON CURVES ARE ARC LENGTHS
SURVEY BY ATWELL-HICKS, INC.



SCIO TO HILLS NO. 1



E 1/4 CORNER SECTION 24
720, E 5E

PLACE OF BEGINNING

WATER EASEMENT

SEWER EASEMENT

GAS EASEMENT

ELECTRIC EASEMENT

NOT PLATTED

NOT PLATTED

NOT PLATTED
SCHOOL SITE

SCIO TO HILLS NO. 1

HOLLYWOOD PARK
A SUBDIVISION OF PART OF THE SE 1/4 OF SECTION 24, T28R06E,
CITY OF ANN ARBOR, WASHTENAW COUNTY, MICHIGAN



ALL DIMENSIONS IN FEET AND DECIMALS THEREOF
ALL DIMENSIONS ON CURVES ARE ARC LENGTHS
SURVEY BY ATWELL-NICKS, INC.

DEDICATION

KNOW ALL MEN BY THESE PRESENT, that we
Otto Haase and Frances Haase, his wife, Daniel
Young and Martha Young, his wife, Daniel Allen Laven and
Elsie Laven, his wife, Frank J. Kennedy and Frances Kennedy,

Signed and Sealed in the
Presence of:

Witnesses: Rose Finkelstein, Harry Segal, Daniel Young, Martha Young, Daniel Allen Laven, Elsie Laven, Frank J. Kennedy, Frances Kennedy, etc.

Signed and Sealed in the
Presence of:

Witnesses: Rose Finkelstein, Harry Segal, Daniel Young, Martha Young, Secretary-Treasurer

ACKNOWLEDGEMENT

STATE OF MICHIGAN)
County of Washtenaw) ss.

On this 15th day of May, A.D., 1957, before me, a Notary Public in and for said County, personally came the above named Daniel Young, Martha Young, Frank J. Kennedy, Frances Kennedy, and Frances Haase, known to me to be the persons who executed the above dedication and acknowledged the same to be their free act and deed.

Mabelle Segal, Notary Public, Washtenaw County, Michigan
My Commission expires Jan 5, 1967.

ACKNOWLEDGEMENT

STATE OF MICHIGAN)
County of Washtenaw) ss.

On this 27th day of May, A.D., 1957, before me, a Notary Public in and for said County, personally came the above named Daniel Allen Laven and Elsie Laven and Otto Haase, and Dorothy G. Kennedy, known to me to be the persons who executed the above dedication and acknowledged the same to be their free act and deed.

Notary Public, Washtenaw County, Michigan
My Commission expires Jan 5, 1967.

ACKNOWLEDGEMENT

STATE OF MICHIGAN)
County of Washtenaw) ss.

On this 6th day of May, A.D., 1957, before me, a Notary Public in and for said County, appeared Daniel Young and Martha Young to me personally known, who being each by me duly sworn, did say that they are the President and Secretary-Treasurer respectively of the Daniel Young Building Company, a Michigan Corporation, and that the said Corporation is the owner of the premises described in the instrument to be acknowledged and that said instrument was signed and sealed in behalf of said Corporation by authority of its Board of Directors and the said Daniel Young and Martha Young acknowledged said instrument to be the free act and deed of said Corporation.

Nick L. Falkow, Notary Public, Washtenaw County, Michigan
My Commission expires July 6, 1967.

DESCRIPTION OF LAND PLATTED

The land embraced in the annexed plat of HOLLYWOOD PARK a subdivision of part of the SE 1/4 of Section 24, T28, R5E, City of Ann Arbor, Washtenaw County, Michigan is described as follows:

Commencing at the E 1/4 corner of Section 24, T28, R5E, Scio Township, Washtenaw County, Michigan; thence along the east line of said Section 24, S 1° 31' W 395.56 feet for a PLACE OF BEGINNING; thence continuing along said east line S 1° 31' W 516.71 feet; thence N 87° 42' 30" W 417.42 feet; thence S 1° 31' W 417.42 feet; thence N 87° 42' 30" W 404.36 feet; thence S 1° 31' W 718.49 feet; thence S 87° 42' 30" W 815.52 feet; thence N 3° 12' 30" W 184.0 feet; thence N 82° 23' E 104.98 feet; thence 194.46 feet in the arc of a circular curve concave to the Southeast, radius 50.0 feet, chord bearing N 10° 00' E 93.05 feet; thence S 1° 31' W 14.3 feet; thence S 87° 42' 30" E 250.0 feet to the place of beginning, containing 92 Lots numbered 1 through 92 inclusive.

SURVEYOR'S CERTIFICATE

I hereby certify that the plat herein delineated is a correct one and that permanent metal monuments consisting of bars not less than one-half inch in diameter and 36 inches in length or shorter bars of not less than a one-half inch in diameter (looped and over each other at least 4 inches with an over-all length of not less than 36 inches, encased in a concrete cylinder at least 4 inches in diameter and 36 inches in depth have been placed at points more than (3) feet as herein shown at all angles in the boundaries of the land platted, at all the intersections of lines of street; and at the intersections of lines of streets with the boundaries of the plat as shown on said plat.

Richard T. Hodgson, Registered Land Surveyor #10061

CERTIFICATE OF APPROVAL BY THE CITY PLANNING COMMISSION

This plat was approved by the Planning Commission of the City of Ann Arbor, Michigan at a meeting held on the 10th day of May, 1957.

Dean Coston, Chairman
John E. Swisher, Jr., Secretary

CERTIFICATE OF MUNICIPAL APPROVAL

This plat was approved by the Common Council of the City of Ann Arbor at a meeting held on the 10th day of May, 1957, and that the width of lots is in compliance with requirements of Section 30, Act 172, of 1925, as amended.

Fred J. Jucker, Clerk

COUNTY TREASURER'S CERTIFICATE

I hereby certify that there are no tax liens or titles held by the State on the lands described herein, and that there are no tax liens or titles held by individuals on said lands for the five years preceding the 15th day of May, 1957, and that the taxes for said period of five years are all paid, as shown by the records of this office.

W.F. Varner, County Treasurer

COPIES
FILED IN AUDITOR GENERAL'S DEPT.
EXAMINED AND APPROVED
Patricia Newirth Harty, County Register of Deeds
C.G. Chandler, County Register of Deeds
Auditor

APPROVAL BY COUNTY PLAT BOARD

This plat was approved on the 14th day of May, 1957, by the Washtenaw County Plat Board.

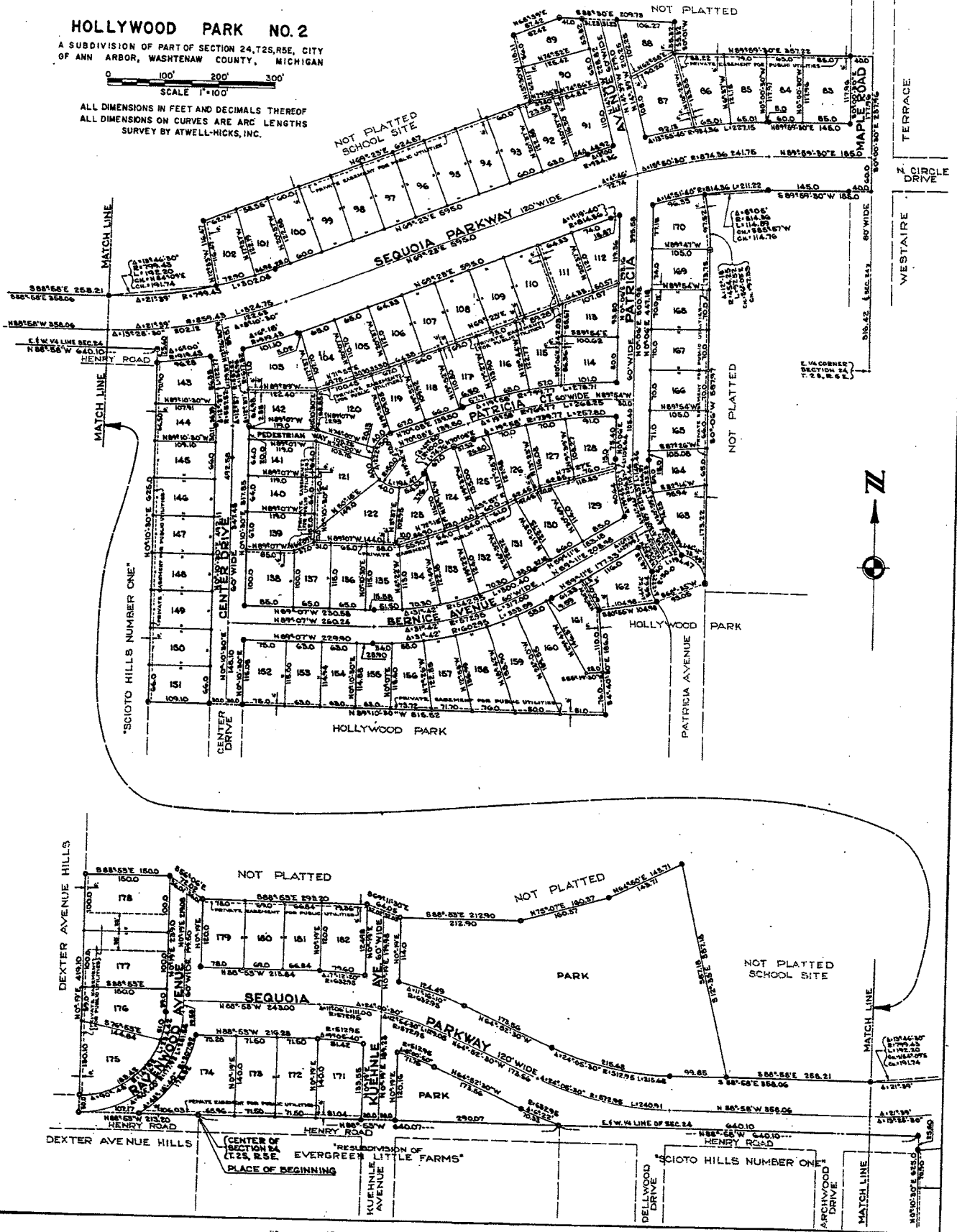
Richard T. Hodgson, Registered Land Surveyor #10061
Auditor

HOLLYWOOD PARK NO. 2

A SUBDIVISION OF PART OF SECTION 24, T2S, R5E, CITY OF ANN ARBOR, WASHTENAW COUNTY, MICHIGAN



ALL DIMENSIONS IN FEET AND DECIMALS THEREOF
ALL DIMENSIONS ON CURVES ARE ARC LENGTHS
SURVEY BY ATWELL-HICKS, INC.



HOLLYWOOD PARK NO. 2
A SUBDIVISION OF PART OF SECTION 24, T2S, R5E, CITY
OF ANN ARBOR, WASHTENAW COUNTY, MICHIGAN



DEDICATION

KNOW ALL MEN BY THESE PRESENTS, that we Daniel Young and Martha Young, his wife, Daniel Allen Laven and Elsie Laven, his wife, Frank J. Kennedy and Frances Kennedy, his wife, and Dorothy G. Kennedy, Divorcee, as proprietors and the Daniel Young Building Company, a Michigan Corporation by Daniel Young, President and Martha Young, Secretary-Treasurer, have caused the land embraced in the annexed plat to be surveyed, laid out and platted, to be known as HOLLYWOOD PARK NO. 2 a subdivision of part of Section 24, T2S, R5E, City of Ann Arbor, Washtenaw County, Michigan and that the Avenues, Court, Drive, Road, Parkway, Pedestrian Way and Parks as shown on said plat are hereby dedicated to the use of the public.

Signed and Sealed in the Presence of:

Niklos Weber Witness Daniel Young
Helen Adcock Witness Martha Young
Niklos Weber Witness Daniel Allen Laven
Niklos Weber Witness Elsie Laven
Thomas J. Keott Witness Frank J. Kennedy
Thomas J. Keott Witness Frances Kennedy

Signed and Sealed in the Presence of:

Niklos Weber Witness Daniel Young, President
Helen Adcock Witness Martha Young, Secretary-Treasurer
Kenneth C. Krull Witness Dorothy G. Kennedy
Niklos Weber Witness

ACKNOWLEDGEMENT

STATE OF MICHIGAN)
County of Washtenaw) ss.

On this 14th day of April, 1961, before me, a Notary Public in and for said County, personally came the above named Daniel Young, Martha Young, Frank J. Kennedy, and Frances Kennedy, known to me to be the persons who executed the above dedication and acknowledged the same to be their free act and deed.

Robert E. Luedke
Notary Public, Washtenaw County, Michigan
My Commission expires March 24, 1964

ACKNOWLEDGEMENT

STATE OF MICHIGAN)
County of Washtenaw) ss.

On this 23rd day of March, 1961, before me, a Notary Public in and for said County, personally came the above named Daniel Allen Laven and Elsie Laven, known to me to be the persons who executed the above dedication and acknowledged the same to be their free act and deed.

Niklos Weber
Notary Public, Washtenaw County, Michigan
My Commission expires March 24, 1964

ALL DIMENSIONS IN FEET AND DECIMALS THEREOF
ALL DIMENSIONS ON CURVES ARE ARC LENGTHS
SURVEY BY ATWELL-HICKS, INC.

ACKNOWLEDGMENT

STATE OF MICHIGAN)
County of Washtenaw) ss.

On this 24th day of March, 1961, before me, a Notary Public in and for said County, appeared Daniel Young and Martha Young to me personally known, who being each by me duly sworn, did say that they are the President and Secretary-Treasurer respectively of the Daniel Young Building Company, a Michigan Corporation, and that the seal affixed to said instrument is the Corporate Seal of said Corporation and that said instrument was signed and sealed in behalf of said Corporation by authority of its Board of Directors and the said Daniel Young and Martha Young acknowledged said instrument to be the free act and deed of said Corporation.

Niklos Weber
Notary Public, Washtenaw County, Michigan
My Commission expires March 24, 1964

DESCRIPTION OF LAND PLATTED

The land embraced in the annexed plat of HOLLYWOOD PARK NO. 2 a subdivision of part of Section 24, T2S, R5E, City of Ann Arbor, Washtenaw County, Michigan is described as follows:
Commencing at the center of Section 24, T2S, R5E, City of Ann Arbor, Washtenaw County, Michigan; thence along the E & W 1/2 line of said Section 24, N 88°-53' W 213.20 feet; thence N 0°-19' E 419.10 feet; thence S 88°-53' E 150.0 feet; thence S 56°-06' E 72.02 feet; thence S 88°-53' E 293.20 feet; thence S 69°-11'-30" E 64.05 feet; thence S 88°-53' E 212.90 feet; thence N 75°-07' E 160.37 feet; thence N 64°-50' E 143.71 feet; thence S 12°-35' E 387.18 feet; thence S 88°-58' E 258.21 feet; thence 192.20 feet in the arc of a circular curve concave to the North, radius 799.43 feet, chord N 84°-09' E 131.74 feet; thence N 12°-33' W 116.47 feet; thence N 69°-23' E 624.87 feet; thence N 15°-30' W 118.11 feet; thence N 68°-39' E 87.42 feet; thence S 88°-30' E 209.73 feet; thence S 0°-01' W 55.32 feet; thence N 89°-59'-30" E 357.22 feet; thence S 0°-00'-30" E 237.96 feet along the east line of said Section 24; thence S 89°-59'-30" W 185.0 feet; thence 114.89 feet in the arc of a circular curve concave to the South, radius 814.36 feet, chord S 85°-57' W 114.76 feet; thence 97.52 feet in the arc of a circular curve concave to the West, radius 454.25 feet, chord S 6°-03' E 97.33 feet; thence S 0°-06' W 587.97 feet; thence 194.47 feet in the arc of a circular curve concave to the SE, radius 50.0 feet, chord S 68°-35' W 93.05 feet; thence S 80°-55' W 104.98 feet; thence S 4°-40'-30" E 166.0 feet; thence N 89°-10'-30" W 815.52 feet; thence W 0°-10'-30" E 625.0 feet; thence N 88°-58' W 640.10 feet along the E & W 1/2 line of said Section 24; thence continuing along said E & W 1/2 line, N 88°-53' W 640.07 feet to the Place of Beginning, containing 99 lots numbered 83 through 182 inclusive and 2 Parks.

SURVEYOR'S CERTIFICATE

I hereby certify that the plat hereon delineated is a correct one and that permanent metal monuments consisting of bars not less than a one-half inch in diameter and 36 inches in length, or shorter bars of not less than one-half inch in diameter lapped over each other at least 6 inches with an over-all length of not less than 36 inches, encased in a concrete cylinder at least 4 inches in diameter and 36 inches in depth have been placed at points marked thus (⊙) as thereon shown at all angles in the boundaries of the land platted, at all the intersections of streets, intersections of alleys, or of streets and alleys, and at the intersections of streets and alleys with the boundaries of the plat as shown on said plat.

Gordon T. Hodgson
Registered Land Surveyor # 10061

ACKNOWLEDGEMENT

STATE OF)
County of Washtenaw) ss.

On this 24th day of March, 1961, before me, a Notary Public in and for said County, personally came the above named Dorothy G. Kennedy, known to me to be the person who executed the above dedication and acknowledged the same to be her free act and deed.

Niklos Weber
Notary Public, Washtenaw County,
My Commission expires March 24, 1964

CERTIFICATE OF APPROVAL BY THE CITY PLANNING COMMISSION

This plat was approved by the Planning Commission of the City of Ann Arbor, Michigan at a meeting held on the 18th day of April, 1961.

I hereby certify this copy is a true copy of the original as recorded in the Office of the Auditor General's Dept. on May 9, 1961. EXAMINED AND APPROVED Date May 4, 1961. William J. Boyd, Secretary

Richard A. Ware, Chairman
William J. Boyd, Secretary

CERTIFICATE OF MUNICIPAL APPROVAL

This plat was approved by the Common Council of the City of Ann Arbor at a meeting held April 2, 1961, and that the width of lots is in compliance with requirements of Section 30, Act 172, of 1929, as amended.

Notary Public, Washtenaw County

Fred J. Laker, Clerk

COUNTY TREASURER'S CERTIFICATE

I hereby certify that there are no tax liens or titles held by the State on the lands described hereon, and that there are no tax liens or titles held by individuals on said lands for the five years preceding the 27th day of April, 1961, and that the taxes for said period of five years are all paid, as shown by the records of this office. This certificate does not apply to taxes, if any, now in process of collection by township, city or village collecting officers.

W.F. Verner, (County Treasurer)

APPROVAL BY COUNTY PLAT BOARD

This plat was approved on the 28th day of April, 1961 by the Washtenaw County Plat Board.

Patricia Newkirk Hardy, John H. Flook
Herbert G. Lowler, J. Martin Rempp
John P. Cook

HOLLYWOOD PARK NO. 3

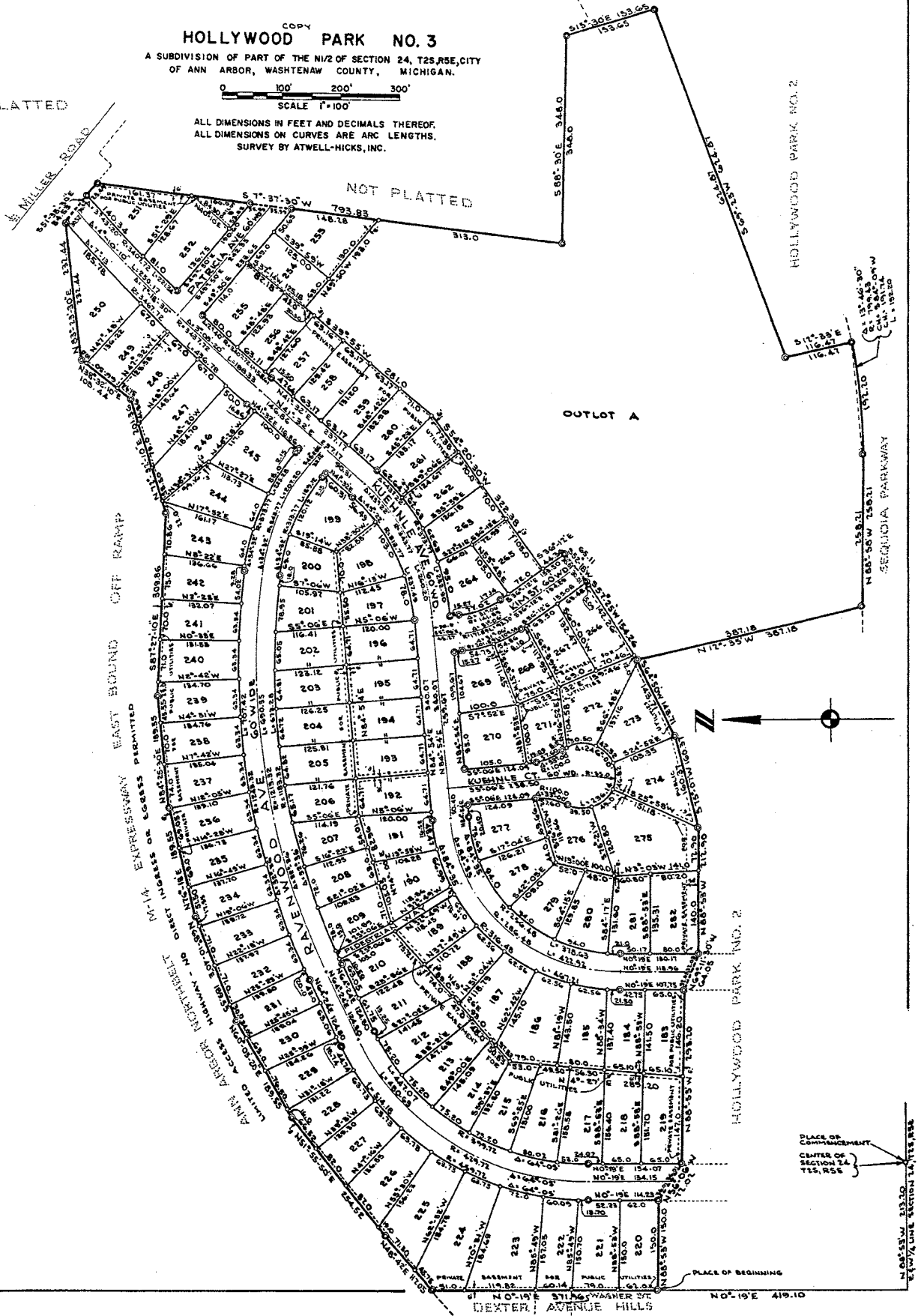
A SUBDIVISION OF PART OF THE NW/2 SECTION 24, T25, R5E, CITY OF ANN ARBOR, WASHTENAW COUNTY, MICHIGAN.



ALL DIMENSIONS IN FEET AND DECIMALS THEREOF.
ALL DIMENSIONS ON CURVES ARE ARC LENGTHS.
SURVEY BY ATWELL-NICKS, INC.

NOT PLATTED

NOT PLATTED



W-14 EXPRESSWAY EAST BOUND OFF RAMP

RAVENSON DRIVE

LIBERTY

ANN ARBOR NORTH

LAUREL

WASHTENAW

WASHTENAW

WASHTENAW

WASHTENAW

WASHTENAW

WASHTENAW

WASHTENAW

WASHTENAW

WASHTENAW

WASHTENAW

WASHTENAW

WASHTENAW

WASHTENAW

WASHTENAW

WASHTENAW

WASHTENAW

WASHTENAW

WASHTENAW

WASHTENAW

WASHTENAW

WASHTENAW

WASHTENAW

WASHTENAW

WASHTENAW

WASHTENAW

DEXTER AVENUE HILLS

WASHTENAW ST

HOLLYWOOD PARK NO. 3
A SUBDIVISION OF PART OF THE 1/2 OF SECTION 24, T28R35E, CITY OF ANN ARBOR, WASHTENAW COUNTY, MICHIGAN.



ALL DIMENSIONS IN FEET AND DECIMALS THEREOF. ALL DIMENSIONS ON CURVES ARE ARC LENGTHS. SURVEY BY ATWELL-NICKS, INC.

Vertical text on the left side containing recording information and dates.

CERTIFICATE AS TO STATE TRUNK LINE OR FEDERAL AID ROADS

We hereby certify that said plat appears to include land located on a state trunk line or federal aid road. Patricia Newkirk Hardy, County Register of Deeds; J. Martin Rempff, Auditor; John H. Flock, County Drain Commissioner; Herbert G. Loettler, Auditor; John P. Cook, Auditor.

CERTIFICATE OF APPROVAL BY THE CITY PLANNING COMMISSION

This plat was approved by the Planning Commission of the City of Ann Arbor, Michigan at a meeting held on the ... day of ... 1964. Robert V. Galbreath, Secretary.

COUNTY TREASURER'S CERTIFICATE

I hereby certify, that there are no tax liens or titles held by the State on the lands described hereon, and that there are no tax liens or titles held by individuals on said lands for the five years preceding the ... day of ... 1964. Sylvester A. Leonard, County Treasurer.

APPROVAL BY COUNTY PLAT BOARD

This plat was approved on the ... day of ... 1964 by the Washtenaw County Plat Board. Patricia Newkirk Hardy, County Register of Deeds; J. Martin Rempff, Auditor; Herbert G. Loettler, Auditor; John P. Cook, Auditor.

SURVEYOR'S CERTIFICATE

I hereby certify that the plat hereon delineated is a correct one and that permanent metal monuments consisting of bars not less than one-half inch in diameter and 36 inches in length, or shorter bars of not less than one-half inch in diameter lapped over each other at least 6 inches with an over-all length of not less than 36 inches, encased in a concrete cylinder at least 4 inches in diameter and 3 1/2 inches in depth have been placed at points marked thereon as a check on the plat at all angles in the boundaries of the land platted, at all the intersections of streets, intersections of alleys, or of streets and alleys, and at the intersection of streets and alleys with the boundaries of the plat as shown on said plat. Cecil G. Friend, Registered Surveyor No. 13921.

DEDICATION

KNOW ALL MEN BY THESE PRESENTS, that we Martha Young, Daniel Allen Lavan and Elsie Lavan, his wife, the Public Schools of the City of Ann Arbor, a Michigan Corporation, by Albert J. Coulson, President, and George Balas, Secretary, and the Daniel Young Building Company, a Michigan Corporation, by Martha Young, President and Charles A. Hoffman, Secretary-Treasurer as proprietors have caused the land embraced in the annexed plat to be surveyed, laid out and platted, to be known as HOLLYWOOD PARK NO. 3 a subdivision of part of the 1/2 of Section 24, T28, R35E, City of Ann Arbor, Washtenaw County, Michigan and that the Avenues, Court, Street and Pedestrian Way as shown on said plat are hereby dedicated to the public and the same as are indicated on said plat are not dedicated to the public but reserved for public utilities and any other use designated hereon and no permanent structures are to be located within said easement.

Signed in the Presence of: Francis E. Carstens, Witness; James O. Kelly, Witness; Daniel Allen Lavan, Notary Public; Elsie Lavan, Notary Public.

Signed and Sealed in the Presence of: Jack Fitzay, Witness; Gerald A. Neff, Witness; Daniel Young, Notary Public; George Balas, Secretary.

Signed and Sealed in the Presence of: Francis E. Carstens, Witness; James O. Kelly, Witness; Daniel Young, Notary Public; Martha Young, President; Charles A. Hoffman, Secretary-Treasurer.

DESCRIPTION OF LAND PLATTED

The land embraced in the annexed plat of HOLLYWOOD PARK NO. 3 a subdivision of part of the N 1/2 of Section 24, T28, R35E, City of Ann Arbor, Washtenaw County, Michigan is described as follows: Commencing at the center of Section 24, T28, R35E, City of Ann Arbor, Washtenaw County, Michigan; thence along the E & W 1/2 line of said Section 24, N 88°-51' W 213.20 feet; thence N 0°-19' E 419.10 feet to a PLACE OF BEGINNING; thence containing N 6°-19' E 371.96 feet; thence N 48°-42' E 117.05 feet; thence N 51°-55'-50" E 254.52 feet; thence N 60°-03'-20" E 189.55 feet; thence N 68°-18'-40" E 189.35 feet; thence N 74°-18' E 189.55 feet; thence N 84°-25'-30" E 189.55 feet; thence S 87°-27'-10" E 309.84 feet; thence N 72°-32'-10" E 201.36 feet; thence N 36°-32'-10" E 108.44 feet; thence N 83°23'-30" E 232.44 feet; thence S 51°-38'-30" E 64.53 feet; thence S 7°-19'-30" W 793.83 feet; thence S 88°-30' E 348.00 feet; thence S 15°-30' E 153.45 feet; thence S 49°-23' W 824.87 feet; thence S 12°-55' E 116.47 feet; thence W 82°-10' E 102.40 feet along the arc of a circular curve concave to the North, radius 799.43 feet, chord S 84°-09' W 191.74 feet; thence N 89°-54' W 258.21 feet; thence N 12°-35' W 387.16 feet; thence S 64°-50' W 143.71 feet; thence S 78°-07' W 160.37 feet; thence N 88°-25' W 212.90 feet; thence N 49°-11'-30" W 64.03 feet; thence N 88°-53' W 293.20 feet; thence N 54°-06' W 72.02 feet; thence N 84°-53' W 150.00 feet to the Place of Beginning containing 108 lots numbered 183 through 282 inclusive and two Outlets lettered A and B.

ACKNOWLEDGMENT

STATE OF MICHIGAN) ss. County of Washtenaw) On this ... day of ... A.D. 1964 before me, a Notary Public in and for said County, personally came the above named Martha Young, Daniel Allen Lavan and Elsie Lavan, known to me to be the persons who executed the above dedication and acknowledged the same to be their free act and deed. My Commission expires ...

ACKNOWLEDGMENT

STATE OF MICHIGAN) ss. County of Washtenaw) On this ... day of ... A.D. 1964 before me, a Notary Public in and for said County, personally came the above named Daniel Young, George Balas, Martha Young and Charles A. Hoffman, known to me to be the persons who executed the above dedication and acknowledged the same to be their free act and deed of said corporation. My Commission expires ...

ACKNOWLEDGMENT

STATE OF MICHIGAN) ss. County of Washtenaw) On this ... day of ... A.D. 1964 before me, a Notary Public in and for said County, personally came the above named Daniel Young, George Balas, Martha Young and Charles A. Hoffman, known to me to be the persons who executed the above dedication and acknowledged the same to be their free act and deed of said Corporation. My Commission expires ...

CERTIFICATE OF MUNICIPAL APPROVAL

This plat was approved by the Common Council of the City of Ann Arbor at a meeting held ... and is in compliance with Section 19a and that the width of lots conform with requirements of Section 30, Act 172, of 1929, as amended.

APPROVED DATE ... Feed J. Lohar, Clerk

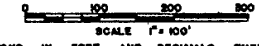
MAY 6 1955

SHEET 1 OF 2

WESTAIRE
TERRACE
SUBDIVISION

MAPLE RIDGE

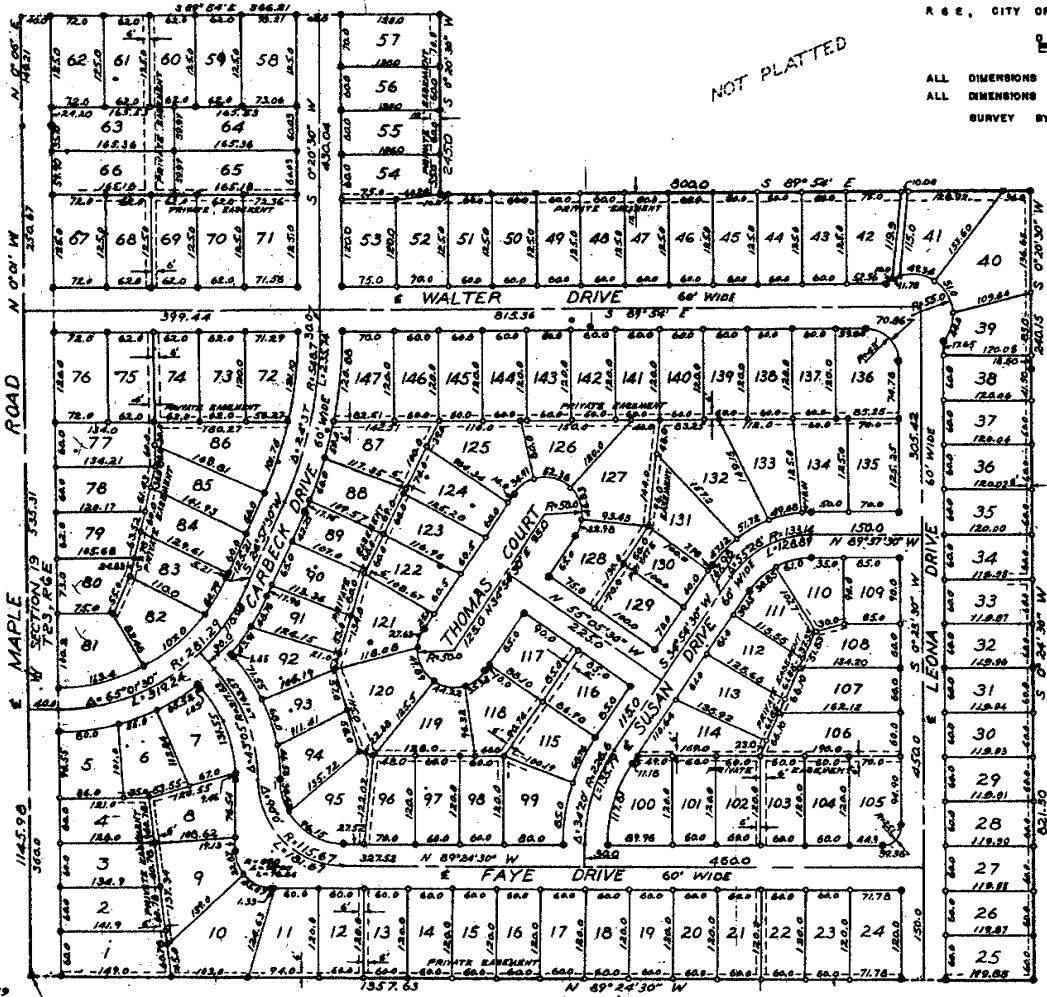
A SUBDIVISION OF PART OF THE SOUTHWEST 1/4 OF SEC. 19, T25,
R 6 E., CITY OF ANN ARBOR, WASHTENAW COUNTY, MICHIGAN



ALL DIMENSIONS IN FEET AND DECIMALS THEREOF
ALL DIMENSIONS ON CURVES ARE ARC LENGTHS
SURVEY BY ATWELL - HICKS, INC.

NOT PLATTED

ARBOR HEIGHTS
SUBDIVISION



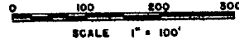
SCIOTO HILLS
NO. 1

SW COR. SEC. 19
T25 - R6E

NOT PLATTED

MAPLE RIDGE SUBDIVISION,

PART OF THE SW 1/4 OF THE SW 1/4 SEC. 19 T2S R6E CITY OF ANN ARBOR, WASHTENAW COUNTY, MICH.



ALL DIMENSIONS IN FEET AND DECIMALS THEREOF SURVEY BY ATWELL - HICKS, INC.

Surveyor's Office: Washtenaw County, Michigan. Plat of Maple Ridge City of Ann Arbor. Recorded this 4th day of May, A.D. 1955. Original on file.

SURVEYOR'S CERTIFICATE

I hereby certify that the plat hereon delineated is a correct one and that permanent metal monuments consisting of bars not less than one-half inch in diameter and 36 inches in length, or shorter bars of not less than one-half inch in diameter lapped over each other at least 6 inches with an over-all length of not less than 36 inches, encased in a concrete cylinder at least 4 inches in diameter and 36 inches in depth have been placed at points marked thus (⊙) as thereon shown at all angles in the boundaries of the land platted, at all the intersections of streets, intersections of alleys, or of streets and alleys, and at the intersections of streets and alleys with the boundaries of the plat as shown on said plat.

Herbert S. Hicks Registered Land Surveyor #1715

DEDICATION

KNOW ALL MEN BY THESE PRESENTS, that we, Floyd A. Sergeant and Mildred T. Sergeant, his wife, and Van Dusen-Carbeck, Inc., a Michigan corporation by Walter D. Van Dusen, President, and Albert E. Blasfield, Secretary, as proprietors, have caused the land embraced in the annexed plat to be surveyed, laid out and platted to be known as 'MAPLE RIDGE SUBDIVISION, part of the SW 1/4 of the SW 1/4 of Sec 19 T2S R6E City of Ann Arbor, Washtenaw County, Mich' and that the road and drives as shown on said plat are hereby dedicated to the public.

Signed and Sealed in the Presence of:

Harriet C. Hoppe (Witness) Floyd A. Sergeant (Sergeant) Bernice R. Seibert (Witness) Mildred T. Sergeant (Sergeant)

Signed and Sealed in the Presence of:

Margaret H. Pommeroy (Witness) Walter D. Van Dusen (President) June E. Unsworth (Witness) Albert E. Blasfield (Secretary)

DESCRIPTION OF LAND PLATTED

The land embraced in the annexed plat of 'MAPLE RIDGE' SUBDIVISION, part of the SW 1/4 of the SW 1/4 of Sec 19 T2S R6E City of Ann Arbor, Washtenaw County, Mich' is described as follows:

BEGINNING at the SW corner of Sec 19 T2S R6E, Ann Arbor Township, Washtenaw County, Mich.; thence N 0°-01'-00" W 1145.72 feet along the west line of said Section 19; thence N 0°-08'-00" E 149.25 feet along the west line of said Section 19; thence S 89°-54'-00" E 566.23 feet; thence S 0°-20'-30" W 245.00 feet; thence S 89°-54'-00" E 800.00 feet; thence S 0°-20'-30" W 240.15 feet; thence S 0°-24'-30" W 821.50 feet; thence N 89°-24'-30" W 1357.83 feet to the place of beginning, containing 147 lots numbered 1-147 inclusive.

APPROVAL BY THE COUNTY PLAT BOARD

This plat was approved on the 27th day of April, 1955.

- Patricia Newirk Hardy (County Register of Deeds) J. Martin Rompp (Auditor) Adolph F. Gross (Auditor) Herbert G. Loeffler (Auditor)

COUNTY TREASURER'S CERTIFICATE

Office of County Treasurer, Washtenaw County. I hereby certify, that there are no tax liens or titles held by the State on the lands described hereon, and that there are no tax liens or titles held by individuals on said lands, for the five years preceding the 27th day of April, 1955, and that the taxes for said period of five years are all paid, as shown by the records of this office.

W. F. Verne (County Treasurer)

APPROVAL BY BOARD OF COUNTY ROAD COMMISSIONERS

THIS PLAT HAS BEEN EXAMINED AND WAS APPROVED ON THE 29th DAY OF April, 1955, BY THE WASHTENAW COUNTY BOARD OF ROAD COMMISSIONERS

- Raymond L. Koch (Member) W. L. Pringer (Member)

MUNICIPAL APPROVAL

This plat was approved by the Board of Public Works of the City of Ann Arbor at a meeting held April 15, 1955.

Fred J. Looker (Clerk)

MUNICIPAL APPROVAL

This plat was approved by the Common Council of the City of Ann Arbor at a meeting held April 18, 1955.

Fred J. Looker (Clerk)

CERTIFICATE OF APPROVAL BY THE CITY PLANNING COMMISSION

This plat was approved by the Planning Commission of the City of Ann Arbor, Mich., at a meeting held on the 19th day of APR 14 1955.

John E. Swisher, Jr. (Chairman) Sybil K. Bennett (Secretary)

CITY CLERK'S CERTIFICATE

Office of City Clerk, City of Ann Arbor. I hereby certify, that the width and depth of lots shown on this plat are in compliance with rules and regulations of the City of Ann Arbor and the requirements as to width and depth of Sec. 30 of Act 173, Public Acts of 1929 as amended by Act 186 Public Acts of 1954.

Fred J. Looker (Clerk)

JUL 7 1953

SHEET 1 OF 2

MARTIN ACRES

A SUBDIVISION OF PART OF THE E 1/2 OF THE NW 1/4, AND
PART OF THE NE 1/4 OF THE SW 1/4 OF SECTION 19, TOWN
2 SOUTH, RANGE 6 EAST, CITY OF ANN ARBOR,
WASHTENAW COUNTY, MICHIGAN.



SCALE 1" = 80'

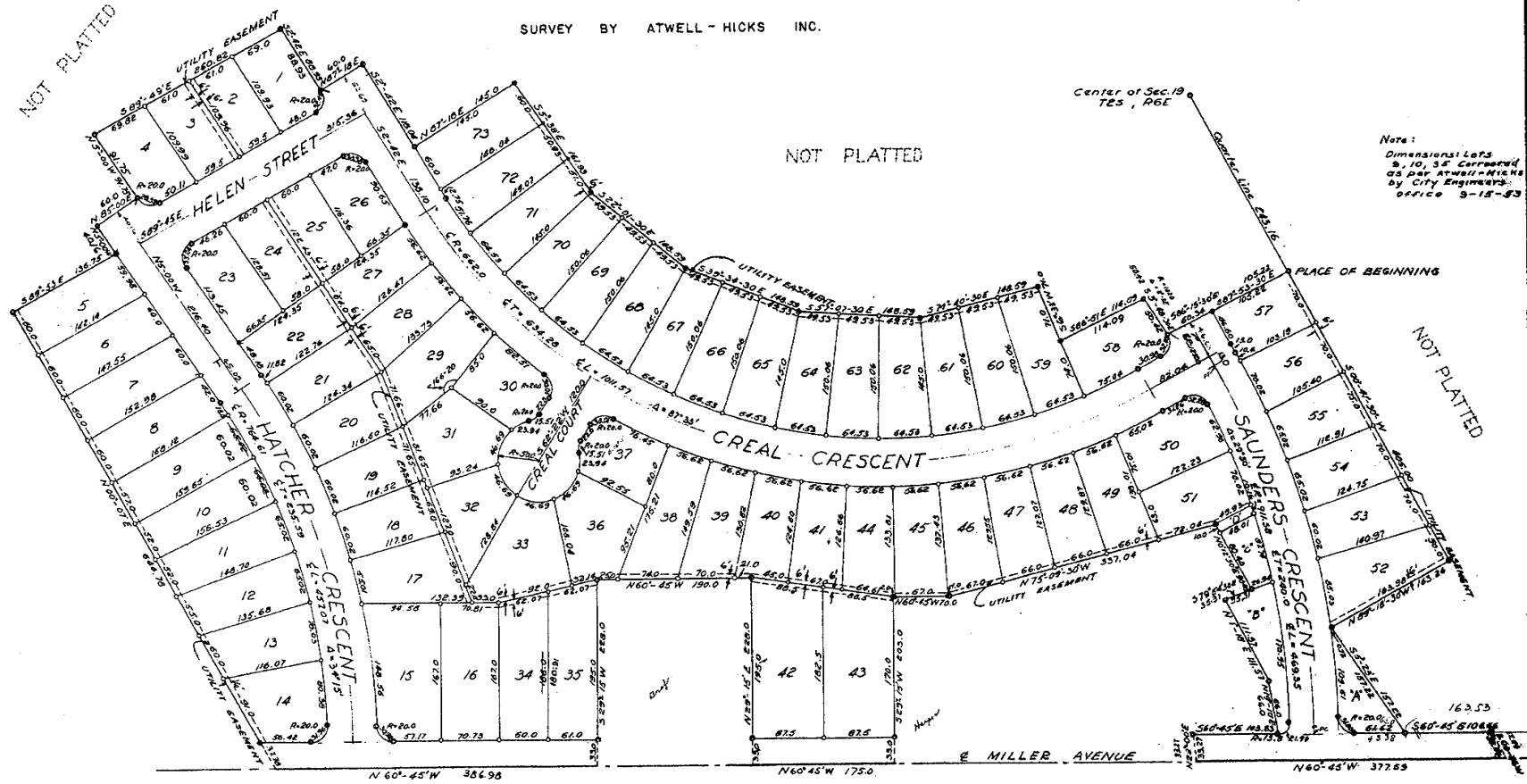
ALL DIMENSIONS ARE IN FEET AND DECIMALS THEREOF
ALL CURVE DISTANCES ARE ARC DIMENSIONS

SURVEY BY ATWELL - HICKS INC.



L. OF R.
67/29/1953
RECORDED
IN BOOK 1, PAGE 12-13

Note:
Dimensions of Lots
9, 10, 54 Carriaged
as per Atwell-Hicks
by City Engineers
Office 3-15-53



ARBOR HEIGHTS NO. 2.

JUL 7 1953

COPY
Register's Office
Washtenaw County, Mich.
Plat of Martin Acres
City of Ann Arbor
was Recorded this 9th day of July
A.D. 1953 at 11 o'clock
A.M. in Liber 11 of Page 62 and 63
Thomas A. Gallagher
Notary Public
By P. N. Hardy, Dep.

MARTIN ACRES

A SUBDIVISION OF PART OF THE E 1/2 OF THE NW 1/4 AND PART OF THE NE 1/4 OF THE SW 1/4 OF SECTION 19, TOWN 2 SOUTH, RANGE 6 EAST, CITY OF ANN ARBOR, WASHTENAW COUNTY, MICHIGAN.



SCALE 1" = 80'

ALL DIMENSIONS ARE IN FEET AND DECIMALS THEREOF ALL CURVE DISTANCES ARE ARC DIMENSIONS

SURVEY BY ATWELL - HICKS INC.

I hereby certify that this copy is a true copy of the map as the forwarded the Register of Deeds for recording.

Date July 7 1953
Filed in Public Office
Date July 13 1953
Examined and Approved
Date July 7 1953

Notary Public
P. N. Hardy, Dep.

DEDICATION

KNOW ALL MEN BY THESE PRESENTS, that we Earl W. Martin and Julia C. Martin, his wife, and Arbor Heights Building Corporation, a Michigan corporation by S. Brooks Barron, President, and Thomas A. Gallagher, Secretary, as proprietors, have caused the land embraced in the annexed plat to be surveyed, laid out and platted to be known as Martin Acres, a Subdivision of part of the E. 1/2 of the N.W. 1/4 and part of the N.E. 1/4 of the S.W. 1/4 of Section 19, Town 2 South, Range 6 East, City of Ann Arbor, Washtenaw County, Michigan

Signed and Sealed in the Presence of

Notary Public
Earl W. Martin
Julia C. Martin
Bruce D. Green
Robert C. Jacob

Signed and Sealed in the Presence of

Arbor Heights Building Corp.
S. Brooks Barron
Thomas A. Gallagher
Earl W. Martin
Julia C. Martin
Mary E. Dyer

ACKNOWLEDGMENT

STATE OF MICHIGAN
Washtenaw County
On this 3 day of June 1953, before me, a Notary Public in and for said County, personally came the above named Earl W. Martin and Julia C. Martin, his wife, known to me to be the persons who executed the above dedication, and acknowledged the same to be their free act and deed.

MUNICIPAL APPROVAL

This Plat was approved by the Board of Public Works of the City of Ann Arbor, Michigan, at a meeting held July 7 1953.
Fred J. Lofker (Clerk)

ACKNOWLEDGMENT

STATE OF MICHIGAN
County of Washtenaw
On this 3 day of June A.D. 1953, before me, Lucile E. Lauer, a Notary Public in and for said county appeared S. Brooks Barron, and Thomas A. Gallagher, to me personally known, who being each by me duly sworn did say that they are the President and Secretary respectively of the Arbor Heights Building Corporation, a Michigan Corporation, and that the seal affixed to said instrument is the corporate seal of said corporation and that said instrument was signed and sealed in behalf of said corporation by authority of its Board of Directors and the said S. Brooks Barron and Thomas A. Gallagher, acknowledged said instrument to be the free act and deed of said corporation.

CERTIFICATE OF APPROVAL BY THE CITY PLANNING COMMISSION

This Plat was approved by the Planning Commission of the City of Ann Arbor, Mich., at a meeting held on the day of MAY 26 1953

APPROVAL BY COUNTY PLAT BOARD

This plat was approved on the 2nd day of July 1953 by the County Plat Board
Thomas A. Fitzgerald
J. Martin Banno
Adolph F. Gross
Herbert G. Loeffler

DESCRIPTION OF LAND PLATTED

The land embraced in the annexed plat of MARTIN ACRES, a Subdivision of part of the E. 1/2 of the N.W. 1/4 and part of the N.E. 1/4 of the S.W. 1/4, Section 19, Town 2 South, Range 6 East, City of Ann Arbor, Washtenaw County, Michigan

is described as follows:

Commencing at the center of Section 19, Town 2 South, Range 6 East, Ann Arbor Township, Washtenaw County, Michigan; thence S. 0° 41' 30" W., 243.18 ft. for a PLACE OF BEGINNING; thence continuing S. 0° 41' 30" W., 406.0 ft., thence N. 89° 18' 30" W., 163.28 ft., thence S. 5° 23' E., 157.22 ft., thence S. 60° 45' E., 104.86 ft., thence S. 0° 46' W., 37.54 ft., thence N. 60° 45' W., 377.59 ft., thence N. 22° 00' E., 33.27 ft., thence S. 80° 45' E., 103.83 ft., thence N. 19° 10' E., 68.0 ft., thence N. 1° 10' E., 111.57 ft., thence S. 79° 54' 30" E., 35.31 ft., thence N. 0° 12' 30" E., 90.40 ft., thence N. 75° 09' 30" W., 337.04 ft., thence N. 60° 45' W., 70.0 ft., thence S. 29° 15' W., 203.0 ft., thence N. 60° 45' W., 175.0 ft., thence N. 29° 15' E., 228.0 ft., thence N. 60° 45' W., 190.0 ft., thence S. 29° 15' W., 228.0 ft., thence N., 60° 45' W., 386.98 ft., thence N. 0° 07' E., 644.78 ft., thence S. 89° 53' E., 136.75 ft., thence N. 5° 00' W., 40.16 ft., thence N. 85° 00' E., 60.0 ft., thence N. 5° 00' W., 61.75 ft., thence S. 89° 49' E., 260.82 ft., thence S. 2° 42' E., 88.98 ft., thence N. 87° 18' E., 60.0 ft., thence S. 2° 42' E., 118.04 ft., thence N. 87° 18' E., 146.0 ft., thence S. 5° 38' E., 161.93 ft., thence S. 22° 01' 30" E., 148.59 ft., thence S. 39° 34' 30" E., 148.59 ft., thence S. 57° 07' 30" E., 148.59 ft., thence S. 74° 40' 30" E., 148.59 ft., thence S. 6° 33' W., 71.0 ft., thence S. 88° 51' E., 114.09 ft., thence Southerly along the arc of a circular curve concave to the West, the radius of which is 1220.0 ft., the chord of which bears S. 3° 48' 30" E., 50.42 ft., thence S. 88° 15' 30" E. 80.34 ft., thence S. 87° 53' 30" E., 105.82 ft., to the place of beginning, being a part of the East 1/2 of the Northwest 1/4 of part of the Northeast 1/4 of the Southwest 1/4 of said Section 19.

MUNICIPAL APPROVAL

This plat was approved by the Common Council of the City of Ann Arbor at a meeting held June 1 1953.
Fred J. Lofker (Clerk)

SURVEYOR'S CERTIFICATE

I hereby certify that the plat herein delineated is a correct one and that permanent metal monuments consisting of bars not less than one-half inch in diameter and 48 inches in length, or shorter bars of not less than one-half inch in diameter lapped over each other at least 6 inches with an overall length of not less than 48 inches, secured in a concrete cylinder of at least 4 inches in diameter and 48 inches in length have been placed at points marked thus (R...) as thereon shown at all angles to the boundaries of the land platted, at all the intersections of streets, intersections of alleys, at all streets and alleys, and at the intersections of streets and alleys with the boundaries of the plat as shown on said plat.
Herbert S. Hicks
Registered Land Surveyor or Registered Professional Engineer
Herbert S. Hicks No. 1715

COUNTY TREASURER'S CERTIFICATE

Office of County Treasurer, Washtenaw County.
I hereby certify, that there are no tax liens or titles held by the State on the lands described herein, and that there are no tax liens or titles held by individuals on said lands, for the five years preceding the 25th day of July 1953 and that the taxes for said period of five years are all paid, as shown by the records of this office.
This certificate does not apply to taxes, if any, now in process of collection by township, city or village collecting officers.
W. F. Verner (County Treasurer)

WESTAIRE TERRACE

A SUBDIVISION OF PART OF THE WEST 1/2 SEC 19, T 2 S, R 8 E, CITY OF ANN ARBOR, WASHTENAW COUNTY, MICHIGAN



SCALE 1" = 100'

ALL DIMENSIONS IN FEET AND DECIMALS THEREOF
ALL DIMENSIONS ON CURVES ARE ARC LENGTHS
SURVEY BY ATWELL - HICKS, INC.

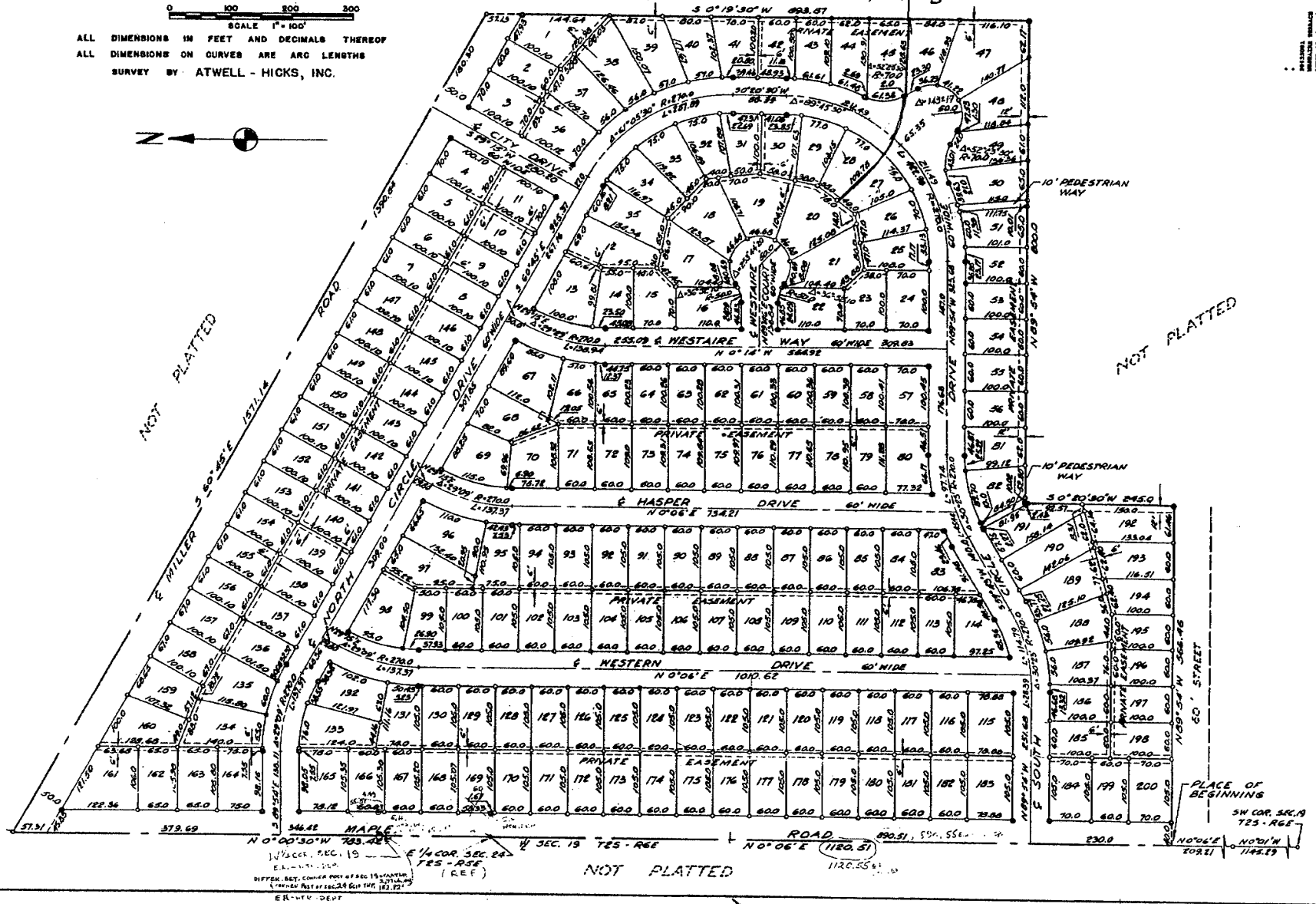


ARBOR HEIGHTS
SUBDIVISION No 2

SHEET 1 OF 2

1 OF 2
07/27/1988

ATWELL - HICKS, INC.
1000 WEST WASHINGTON
ANN ARBOR, MI 48106



35E

WESTAIRE TERRACE

SHEET 2 OF 2

A SUBDIVISION OF PART OF THE WEST 1/2 SEC 19, T 2 S, R 6 E, CITY OF ANN ARBOR, WASHTENAW COUNTY, MICHIGAN



ALL DIMENSIONS IN FEET AND DECIMALS THEREOF

ALL DIMENSIONS ON CURVES ARE ARC LENGTHS

SURVEY BY ATWELL - HICKS, INC.

Register's Office
Washtenaw County
Plat of Westaire Terrace
was Recorded this 21st day of April, 1955
at 12:53 o'clock
P. M. in Volume 12 of Plats
on Page 51-5

I hereby certify this copy is a true copy of map or plat as recorded in the Register's Office for recording.
Date: March 26, 1955
Filed in Register General's Dept.
Date: January 12, 1955
Examined and approved
Date: May 24, 1955
David J. Swisher, Jr.
Auditor General
Atwell-Hicks, Inc.
Plat Engineer

DEDICATION

KNOW ALL MEN BY THESE PRESENTS, that we Neil O. Staebler, doing business under the assumed name of Staebler and Son, Burnette Staebler, his wife, Rena O. Geyer, survivor of Harold H. Geyer, and HARRY LEE GEYER, a SINGLE MAN as proprietors, have caused the land embraced in the annexed plat to be surveyed, laid out and platted, to be known as WESTAIRE TERRACE a subdivision of part of the West 1/2 Sec 19, T 2 S, R 6 E, City of Ann Arbor, Washtenaw County Michigan and that the roads, ways and drives as shown on said plat are hereby dedicated to the use of the public.

Signed and Sealed in the Presence of:

Neil O. Staebler (L.S.)
Neil O. Staebler
Burnette Staebler (L.S.)
Burnette Staebler
Rena O. Geyer (L.S.)
Rena O. Geyer
HARRY LEE GEYER (L.S.)
HARRY LEE GEYER
Hugh P. Carlson (Witness)
HUGH P. CARLSON (Witness)
Albert J. T. Ryan (Witness)
ALBERT J. T. RYAN (Witness)

SURVEYOR'S CERTIFICATE

I hereby certify that the plat hereon delineated is a correct one and that permanent metal monuments consisting of bars not less than one-half inch in diameter and 36 inches in length, or shorter bars of not less than one-half inch in diameter lapped over each other at least 6 inches with an over-all length of not less than 36 inches, encased in a concrete cylinder at least 4 inches in diameter and 36 inches in depth have been placed at points marked thus (●) as thereon shown at all angles in the boundaries of the land platted, at all the intersections of streets, intersections of alleys, or of streets and alleys, and at the intersections of streets and alleys with the boundaries of the plat as shown on said plat.

Herbert S. Hicks
Herbert S. Hicks
Registered Land Surveyor and
Professional Engineer # 1715

COUNTY TREASURER'S CERTIFICATE

Office of County Treasurer, Washtenaw County.
I hereby certify, that there are no tax liens or titles held by the State on the lands described hereon, and that there are no tax liens or titles held by individuals on said lands, for the five years preceding the 24th day of April, 1955, and that the taxes for said period of five years are all paid, as shown by the records of this office. This certificate does not apply to taxes, if any, now in process of collection by township, city or village collecting officers.

W. F. Verner
W. F. Verner (County Treasurer)

APPROVAL BY COUNTY PLAT BOARD

This plat was approved on the 21st day of April, 1955 by the Washtenaw County Plat Board.

Patricia Newkirk Hardy
Patricia Newkirk Hardy (County Register of Deeds)
J. Martin Rempp
J. Martin Rempp (Auditor)
Adolph F. Gross
Adolph F. Gross (Auditor)
Herbert G. Loeffler
Herbert G. Loeffler (Auditor)

CERTIFICATE OF APPROVAL BY THE CITY PLANNING COMMISSION

This plat was approved by the Planning Commission of the City of Ann Arbor, Mich., at a meeting held on the 29th day of MARCH, 1955

John E. Swisher, Jr.
John E. Swisher, Jr. (Chairman)
Sybil K. Bennett
Sybil K. Bennett (Secretary)

MUNICIPAL APPROVAL

This plat was approved by the Common Council of the City of Ann Arbor at a meeting held April 7, 1955

Fred J. Looker
Fred J. Looker (Clerk)

MUNICIPAL APPROVAL

This plat was approved by the Board of Public Works of the City of Ann Arbor at a meeting held April 8, 1955

Fred J. Looker
Fred J. Looker (Clerk)

APPROVAL BY BOARD OF COUNTY ROAD COMMISSIONERS

This plat has been examined and was approved on the 29th day of April, 1955 by the Washtenaw County Board of Road Commissioners.

James C. Hendley
James C. Hendley (Chairman)
Raymond L. Koch
Raymond L. Koch (Member)
H. L. Frisinger
H. L. Frisinger (Member)

ACKNOWLEDGMENT

STATE OF MICHIGAN)
County of Washtenaw) SS

On this 26th day of March, A.D. 1955 before me, a Notary Public in and for said County, personally came the above named Neil O. Staebler, Burnette Staebler, HARRY LEE GEYER, and Rena O. Geyer known to me to be the persons who executed the above dedication, and acknowledged the same to be their free act and deed.

Lucas E. Lauer
Lucas E. Lauer
Notary Public in and for Washtenaw County
My Commission expires 1-13-57

DESCRIPTION OF LAND PLATTED

The land embraced in the annexed plat of WESTAIRE TERRACE a subdivision of part of the West 1/2 Sec 19, T 2 S, R 6 E, City of Ann Arbor, Washtenaw County, Michigan is described as follows:

COMMENCING at the SW corner of Section 19, T 2 S, R 6 E, City of Ann Arbor, Washtenaw County, Michigan; thence along the west line of said section N 0°-01' W 1145.29 feet; thence N 0°-06' E 209.21 feet for a PLACE OF BEGINNING; thence continuing N 0°-06' E 1120.51 feet; thence N 0°-00'-30" W 783.42 feet; thence S 80°-45' E 1571.14 feet; thence S 0°-19'-30" W 893.87 feet; thence N 89°-54' W 800.0 feet; thence S 0°-20'-30" W 245.0 feet; thence N 89°-54' W 566.45 feet to the place of beginning containing 200 lots numbered 1 to 200 inclusive.

CITY CLERK'S CERTIFICATE

Office of City Clerk, City of Ann Arbor
I hereby certify, that the width and depth of lots shown on this plat are in compliance with rules and regulation of the City of Ann Arbor and the requirements as to width and depth of Sec. 30 of Act 172, Public Acts of 1929 as amended by Act 186 Public Acts of 1954.

Fred J. Looker
Fred J. Looker (Clerk)

Walton
Westport Hills
Subdivision No. 3
August 17, 1959
Patricia Newkirk Hardy

August 13, 1959
August 20, 1959
August 13, 1959
D. L. Thompson



WESTPORT HILLS SUBDIVISION NO. 3

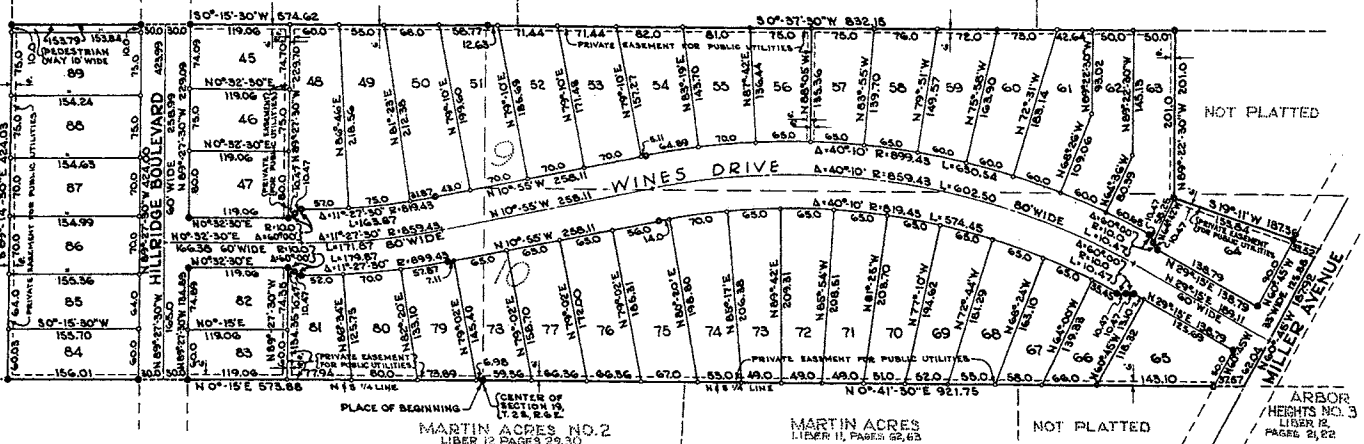
OF PART OF THE NE 1/4 OF SECTION 19, AND OF LOTS 9 AND 10 OF THE PLAT OF THE SE 1/4 OF SECTION 19, T2S, R6E, CITY OF ANN ARBOR, WASHTENAW COUNTY, MICHIGAN

0 100 200 300
SCALE 1" = 100'
ALL DIMENSIONS IN FEET AND DECIMALS THEREOF
ALL DIMENSIONS ON CURVES ARE ARC LENGTHS
SURVEY BY ATWELL-HICKS, INC.

WESTPORT HILLS SUBDIVISION
LIBER 12, PAGES 19, 20

WESTRIDGE
LIBER 11, PAGE 28

JUNIOR HIGH SCHOOL SITE NOT PLATTED



DEDICATION

KNOW ALL MEN BY THESE PRESENTS, that we, Neil O. Staebler, doing business under the assumed name of Staebler & Son, Burnette Staebler, his wife, Mary Steeb, Anna M. McPhee, and the L.G. and R. Corporation, a Michigan Corporation by Larry Shalit, President, and Ralph L. Seltzer, Sec., as proprietors, have caused the land embraced in the annexed plat to be surveyed, laid out and platted to be known as WESTPORT HILLS SUBDIVISION NO. 3 of part of the NE 1/4 of Section 19, and of Lots 9 and 10 of the plat of the SE 1/4 of Section 19, T2S, R6E, City of Ann Arbor, Washtenaw County, Michigan and that the Boulevard Drive, Avenue and Pedestrianway as shown on said plat are hereby dedicated to the use of the public.

Signed and Sealed in the Presence of:
Hugh E. Wilson, Witness
Eleanor Kilpatrick, Witness

Neil O. Staebler
Burnette Staebler
Mary Steeb
Anna M. McPhee

Signed and Sealed in the Presence of:
Arthur R. Peer, Witness
Jacqueline B. Royal, Witness

L.G. and R. CORPORATION
Larry Shalit, President
Ralph L. Seltzer, Secretary

ACKNOWLEDGMENT

STATE OF MICHIGAN)
County of (Walton) ss.

On this 17th day of August, A.D. 1959, before me, a Notary Public in and for said County, appeared Larry Shalit, and Ralph L. Seltzer, to me personally known, who being each by me duly sworn did say that they are the President and Secretary respectively of the L.G. and R. Corporation, a Michigan Corporation, and that said instrument was signed in behalf of said Corporation by authority of its Board of Directors and the said Larry Shalit and Ralph L. Seltzer acknowledged said instrument to be the free act and deed of said Corporation.

Jacqueline B. Royal
Notary Public, Walton County, Michigan
My Commission expires...

DESCRIPTION OF LAND PLATTED

The land embraced in the annexed plat of WESTPORT HILLS SUBDIVISION NO. 3 of part of the NE 1/4 of Section 19, and of Lots 9 and 10 of the plat of the SE 1/4 of Section 19, T2S, R6E, City of Ann Arbor, Washtenaw County, Michigan is described as follows:

Beginning at the center of Section 19, T2S, R6E, City of Ann Arbor, Washtenaw County, Michigan; thence N 0°-15' E 573.88 feet; thence S 89°-14'-30" E 424.03 feet; thence S 0°-15'-30" W 574.62 feet; thence S 0°-37'-30" W 832.15 feet; thence N 89°-22'-30" W 201.0 feet; thence S 19°-11' W 187.36 feet; thence N 60°-45' W 187.92 feet; thence N 0°-41'-30" E 921.75 feet to the Place of Beginning containing 45 lots numbered 45 through 89 inclusive.

ACKNOWLEDGMENT

STATE OF MICHIGAN)
County of (Walton) ss.

On this 17th day of August, A.D. 1959, before me, a Notary Public in and for said County, personally came Neil O. Staebler, Burnette Staebler, Mary Steeb and Anna M. McPhee, known to me to be the persons who executed the above dedication and acknowledged the same to be their free act and deed.

Eleanor Kilpatrick
Notary Public, Walton County, Michigan
My Commission expires...

SURVEYOR'S CERTIFICATE

I hereby certify that the plat hereon delineated is a correct one and that permanent metal monuments consisting of bars not less than one-half inch in diameter and 36 inches in length, or shorter bars of not less than one-half inch in diameter lapped over each other at least 6 inches with an overall length of not less than 36 inches, encased in a concrete cylinder at least 4 inches in diameter and 36 inches in depth have been placed at points marked thus (O) as shown at all angles in the boundaries of the land platted, at all the intersections of lines of streets, and at the intersections of lines of streets with the boundaries of the plat as shown on said plat.

Robert J. Jagow
Registered Land Surveyor #6998

CERTIFICATE OF APPROVAL BY THE CITY PLANNING COMMISSION

This plat was approved by the Planning Commission of the City of Ann Arbor, Michigan at a meeting held on the 20th day of August, 1959.

Dean W. Coston, Chairman
John D. Paul, Secretary

CERTIFICATE OF MUNICIPAL APPROVAL

This plat was approved by the Common Council of the City of Ann Arbor at a meeting held August 17, 1959, and that the width of lots is in compliance with requirements of Section 30, Act 172, of 1929, as amended.

Fred J. Lopez, Clerk

COUNTY TREASURER'S CERTIFICATE

I hereby certify, that there are no tax liens or titles held by the State on the lands described hereon, and that there are no tax liens or titles held by individuals on said lands for the five years preceding the 17th day of August, 1959, and that the taxes for said period of five years are all paid, as shown by the records of this office.

W. F. Verner, County Treasurer

APPROVAL BY COUNTY PLAT BOARD

This plat was approved on the 7th day of August, 1959 by the Washtenaw County Plat Board.

Patricia Newkirk Hardy, County Register of Deeds
John H. Flook, County Commissioner
J. Martin Rempff, Auditor
Herbert G. Loefler, Auditor

1253 Page 180
 Re: Discontinuance of Delta St.

See also 1054 Page 518

Examined and Approved
 Sept 7 1936
 J. J. Ballantyne

"SCIOTO HILLS"

A SUBDIVISION OF PART OF THE SOUTHEAST QUARTER,
 SECTION 24, SCIO TOWNSHIP,
 WASHTENAW COUNTY, MICHIGAN

SCALE ONE INCH = ONE HUNDRED FEET

CERTIFICATE OF APPROVAL BY THE TOWNSHIP BOARD

This plat was approved by the Township Board of the Township of Scio, Washtenaw County, Michigan, at a meeting held on the 1st day of August, 1936.

J. J. Ballantyne
 Chairman

TAX CERTIFICATE OFFICE OF THE COUNTY TREASURER

I hereby certify that there are no tax liens or titles held by the State on the lands described here, and that there are no tax liens or titles held by individuals on said lands for the five years preceding the 1st day of August 1936 and that the taxes for said period of five years are paid, as shown by the records of this office.

James T. Hatcher
 County Treasurer

DESCRIPTION

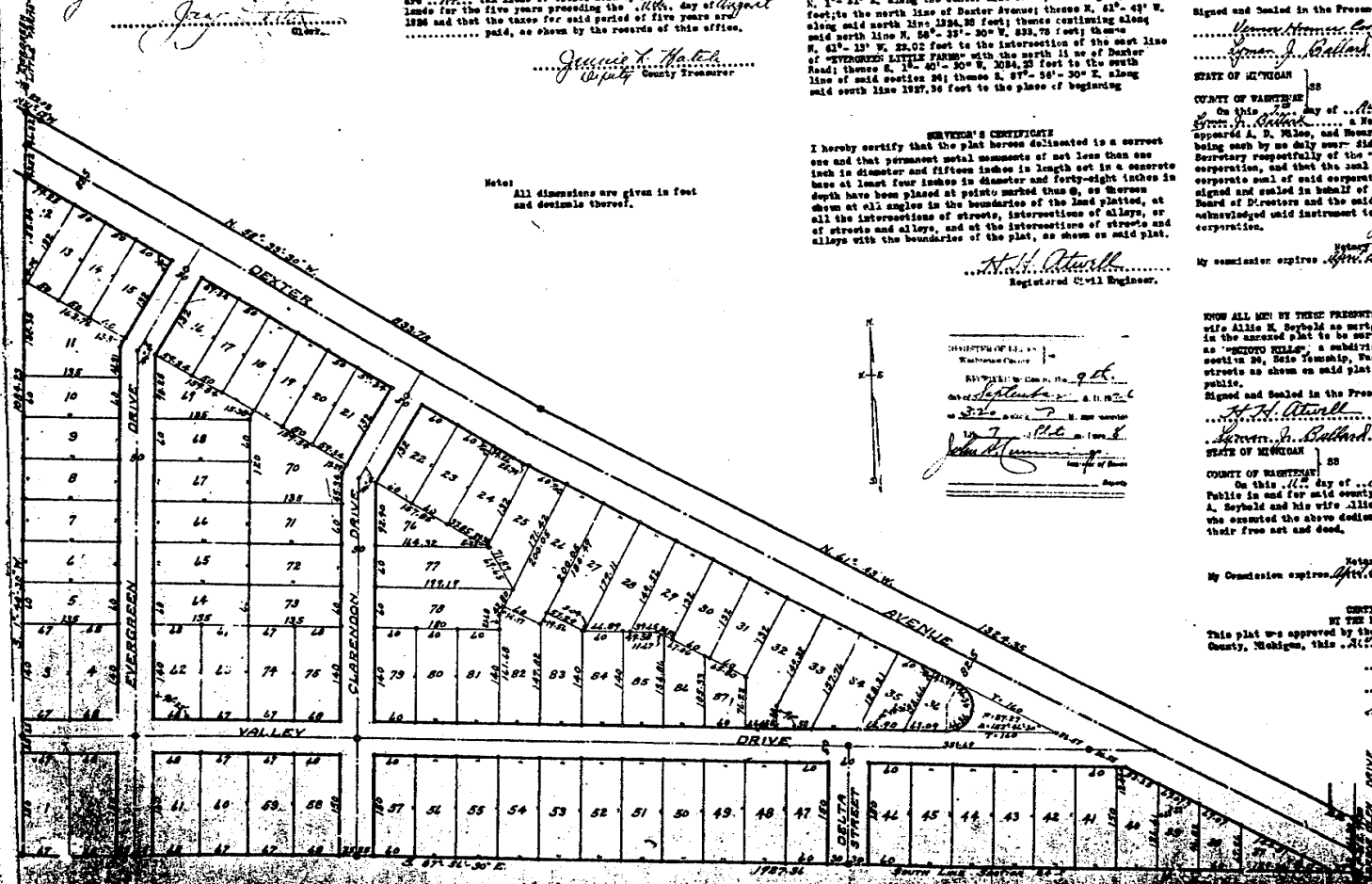
The land embraced in the annexed plat of "SCIOTO HILLS", a subdivision of part of the southeast quarter, section 24, Scio Township, Washtenaw County, Michigan, is described as follows: each, since five met, Washtenaw County, Michigan; thence N. 2° 31' E. along the center line of a public highway 70.30 feet to the north line of Dexter Avenue; thence E. 21° - 47' W. along said north line 124.25 feet; thence continuing along said north line N. 56° - 25' - 30" W. 232.75 feet; thence N. 61° - 13' W. 22.02 feet to the intersection of the east line of "EVERGREEN LITTLE FARMS" with the north line of Dexter Road; thence E. 1° - 42' - 30" W. 204.25 feet to the south line of said section 24; thence S. 87° - 58' - 30" E. along said south line 1247.30 feet to the place of beginning.

SURVEYOR'S CERTIFICATE

I hereby certify that the plat hereto delineated is a correct one and that permanent metal monuments of not less than one inch in diameter and fifteen inches in length set in a concrete base at least four inches in diameter and forty-eight inches in depth have been placed at points marked thus G, as shown shown at all angles in the boundaries of the land platted, at all the intersections of streets, intersections of alleys, or at streets and alleys, and at the intersections of streets and alleys with the boundaries of the plat, as shown on said plat.

H. H. Atwell
 Registered Civil Engineer.

Notes:
 All dimensions are given in feet and decimals thereof.



KNOW ALL MEN BY THESE PRESENTS: That we the "HIGHLAND REALTY COMPANY", a Michigan Corporation by J. D. Miloe President, and Board of Directors, have caused the land described in the annexed plat to be surveyed, laid out and platted to be known as "SCIOTO HILLS", a subdivision of part of the southeast quarter section 24, Scio Township, Washtenaw County, Michigan, and that the streets as shown on said plat are hereby dedicated to the use of the Public.

Signed and Sealed in the Presence of:
James J. Ballantyne President
Howard S. Morris Secretary

STATE OF MICHIGAN
 COUNTY OF WASHTENAW
 On this 7th day of August, 1936, before me appeared J. J. Ballantyne, a Notary Public in and for said county, and being sworn by me duly sworn: did say that he was the President and Secretary respectively of the "HIGHLAND REALTY COMPANY" a Michigan corporation, and that the said annexed plat is the corporate deed of said corporation and that said instrument was signed and sealed in behalf of said corporation by authority of the Board of Directors and the said J. D. Miloe, and Howard S. Morris acknowledged said instrument to be the free act and deed of said corporation.
James J. Ballantyne
 Notary Public, Washtenaw County, Michigan.
 My commission expires April 1, 1937.

KNOW ALL MEN BY THESE PRESENTS: That we Charles A. Seybold and his wife Allie M. Seybold as mortgagors, have caused the land embraced in the annexed plat to be surveyed, laid out and platted to be known as "SCIOTO HILLS", a subdivision of part of the southeast quarter section 24, Scio Township, Washtenaw County, Michigan, and that the streets as shown on said plat are hereby dedicated to the use of the public.
 Signed and Sealed in the Presence of:
Charles A. Seybold (M)
Allie M. Seybold (M)
James J. Ballantyne Notary Public

STATE OF MICHIGAN
 COUNTY OF WASHTENAW
 On this 11th day of August, 1936 before me a Notary Public in and for said county, personally seen the above named Charles A. Seybold and his wife Allie M. Seybold, known to me to be the persons who executed the above dedication, and acknowledged the same to be their free act and deed.
James J. Ballantyne
 Notary Public, Washtenaw County, Michigan.
 My Commission expires April 1, 1937.

CERTIFICATE OF APPROVAL
 BY THE BOARD OF COUNTY AUDITORS
 This plat was approved by the Board of County Auditors of Washtenaw County, Michigan, this 11th day of August, 1936.
Samuel T. Hammond

RECORDED IN THE OFFICE OF THE COUNTY CLERK OF WASHTENAW COUNTY, MICHIGAN, ON SEPTEMBER 10, 1936.

FILED IN THE OFFICE OF THE COUNTY CLERK OF WASHTENAW COUNTY, MICHIGAN, ON SEPTEMBER 10, 1936.

DEDICATION

KNOW ALL MEN BY THESE PRESENTS that we George J. Harner and Emma J. Harner husband and wife as proprietors of Lot 107 and 108, Bernard K. Markins and Loretta J. Markins, husband and wife as proprietors of Lots 109, 110, 111, 112, 113, 114, 115, 116, 117, 118, 119, 120, 121, 122, 123, 124, 125, 126, 127, 128, 129, 130, 131, 132, 133, 134, 135, 136, 137, 138, 139, 140, 141, 142, 143, 144, 145, 146, 147, 148, 149, 150, 151, 152, 153, 154, 155, 156, 157, 158, 159, 160, 161, 162, 163, 164, 165, 166, 167, 168, 169, 170, 171, 172, 173, 174, 175, 176, 177, 178, 179, 180, 181, 182, 183, 184, 185, 186, 187, 188, 189, 190, 191, 192, 193, 194, 195, 196, 197, 198, 199, 200, 201, 202, 203, 204, 205, 206, 207, 208, 209, 210, 211, 212, 213, 214, 215, 216, 217, 218, 219, 220, 221, 222, 223, 224, 225, 226, 227, 228, 229, 230, 231, 232, 233, 234, 235, 236, 237, 238, 239, 240, 241, 242, 243, 244, 245, 246, 247, 248, 249, 250, 251, 252, 253, 254, 255, 256, 257, 258, 259, 260, 261, 262, 263, 264, 265, 266, 267, 268, 269, 270, 271, 272, 273, 274, 275, 276, 277, 278, 279, 280, 281, 282, 283, 284, 285, 286, 287, 288, 289, 290, 291, 292, 293, 294, 295, 296, 297, 298, 299, 300, 301, 302, 303, 304, 305, 306, 307, 308, 309, 310, 311, 312, 313, 314, 315, 316, 317, 318, 319, 320, 321, 322, 323, 324, 325, 326, 327, 328, 329, 330, 331, 332, 333, 334, 335, 336, 337, 338, 339, 340, 341, 342, 343, 344, 345, 346, 347, 348, 349, 350, 351, 352, 353, 354, 355, 356, 357, 358, 359, 360, 361, 362, 363, 364, 365, 366, 367, 368, 369, 370, 371, 372, 373, 374, 375, 376, 377, 378, 379, 380, 381, 382, 383, 384, 385, 386, 387, 388, 389, 390, 391, 392, 393, 394, 395, 396, 397, 398, 399, 400, 401, 402, 403, 404, 405, 406, 407, 408, 409, 410, 411, 412, 413, 414, 415, 416, 417, 418, 419, 420, 421, 422, 423, 424, 425, 426, 427, 428, 429, 430, 431, 432, 433, 434, 435, 436, 437, 438, 439, 440, 441, 442, 443, 444, 445, 446, 447, 448, 449, 450, 451, 452, 453, 454, 455, 456, 457, 458, 459, 460, 461, 462, 463, 464, 465, 466, 467, 468, 469, 470, 471, 472, 473, 474, 475, 476, 477, 478, 479, 480, 481, 482, 483, 484, 485, 486, 487, 488, 489, 490, 491, 492, 493, 494, 495, 496, 497, 498, 499, 500, 501, 502, 503, 504, 505, 506, 507, 508, 509, 510, 511, 512, 513, 514, 515, 516, 517, 518, 519, 520, 521, 522, 523, 524, 525, 526, 527, 528, 529, 530, 531, 532, 533, 534, 535, 536, 537, 538, 539, 540, 541, 542, 543, 544, 545, 546, 547, 548, 549, 550, 551, 552, 553, 554, 555, 556, 557, 558, 559, 560, 561, 562, 563, 564, 565, 566, 567, 568, 569, 570, 571, 572, 573, 574, 575, 576, 577, 578, 579, 580, 581, 582, 583, 584, 585, 586, 587, 588, 589, 590, 591, 592, 593, 594, 595, 596, 597, 598, 599, 600, 601, 602, 603, 604, 605, 606, 607, 608, 609, 610, 611, 612, 613, 614, 615, 616, 617, 618, 619, 620, 621, 622, 623, 624, 625, 626, 627, 628, 629, 630, 631, 632, 633, 634, 635, 636, 637, 638, 639, 640, 641, 642, 643, 644, 645, 646, 647, 648, 649, 650, 651, 652, 653, 654, 655, 656, 657, 658, 659, 660, 661, 662, 663, 664, 665, 666, 667, 668, 669, 670, 671, 672, 673, 674, 675, 676, 677, 678, 679, 680, 681, 682, 683, 684, 685, 686, 687, 688, 689, 690, 691, 692, 693, 694, 695, 696, 697, 698, 699, 700, 701, 702, 703, 704, 705, 706, 707, 708, 709, 710, 711, 712, 713, 714, 715, 716, 717, 718, 719, 720, 721, 722, 723, 724, 725, 726, 727, 728, 729, 730, 731, 732, 733, 734, 735, 736, 737, 738, 739, 740, 741, 742, 743, 744, 745, 746, 747, 748, 749, 750, 751, 752, 753, 754, 755, 756, 757, 758, 759, 760, 761, 762, 763, 764, 765, 766, 767, 768, 769, 770, 771, 772, 773, 774, 775, 776, 777, 778, 779, 780, 781, 782, 783, 784, 785, 786, 787, 788, 789, 790, 791, 792, 793, 794, 795, 796, 797, 798, 799, 800, 801, 802, 803, 804, 805, 806, 807, 808, 809, 810, 811, 812, 813, 814, 815, 816, 817, 818, 819, 820, 821, 822, 823, 824, 825, 826, 827, 828, 829, 830, 831, 832, 833, 834, 835, 836, 837, 838, 839, 840, 841, 842, 843, 844, 845, 846, 847, 848, 849, 850, 851, 852, 853, 854, 855, 856, 857, 858, 859, 860, 861, 862, 863, 864, 865, 866, 867, 868, 869, 870, 871, 872, 873, 874, 875, 876, 877, 878, 879, 880, 881, 882, 883, 884, 885, 886, 887, 888, 889, 890, 891, 892, 893, 894, 895, 896, 897, 898, 899, 900, 901, 902, 903, 904, 905, 906, 907, 908, 909, 910, 911, 912, 913, 914, 915, 916, 917, 918, 919, 920, 921, 922, 923, 924, 925, 926, 927, 928, 929, 930, 931, 932, 933, 934, 935, 936, 937, 938, 939, 940, 941, 942, 943, 944, 945, 946, 947, 948, 949, 950, 951, 952, 953, 954, 955, 956, 957, 958, 959, 960, 961, 962, 963, 964, 965, 966, 967, 968, 969, 970, 971, 972, 973, 974, 975, 976, 977, 978, 979, 980, 981, 982, 983, 984, 985, 986, 987, 988, 989, 990, 991, 992, 993, 994, 995, 996, 997, 998, 999, 1000.

State of Michigan ss
County of Washtenaw ss
I, Notary Public in and for said County, do hereby certify that the above named George J. Harner and Emma J. Harner his wife, Bernard K. Markins and Loretta J. Markins, his wife, John T. Edwards and Esther C. Edwards, his wife, Theodore Wolff and Kela F. Wolff, his wife, Charles O. Smyth and Mattie S. Smyth, his wife, and Charles A. Seybold and Allie M. Seybold, his wife, known to me to be the persons who executed the above dedication and acknowledged the same to be their free act and deed.

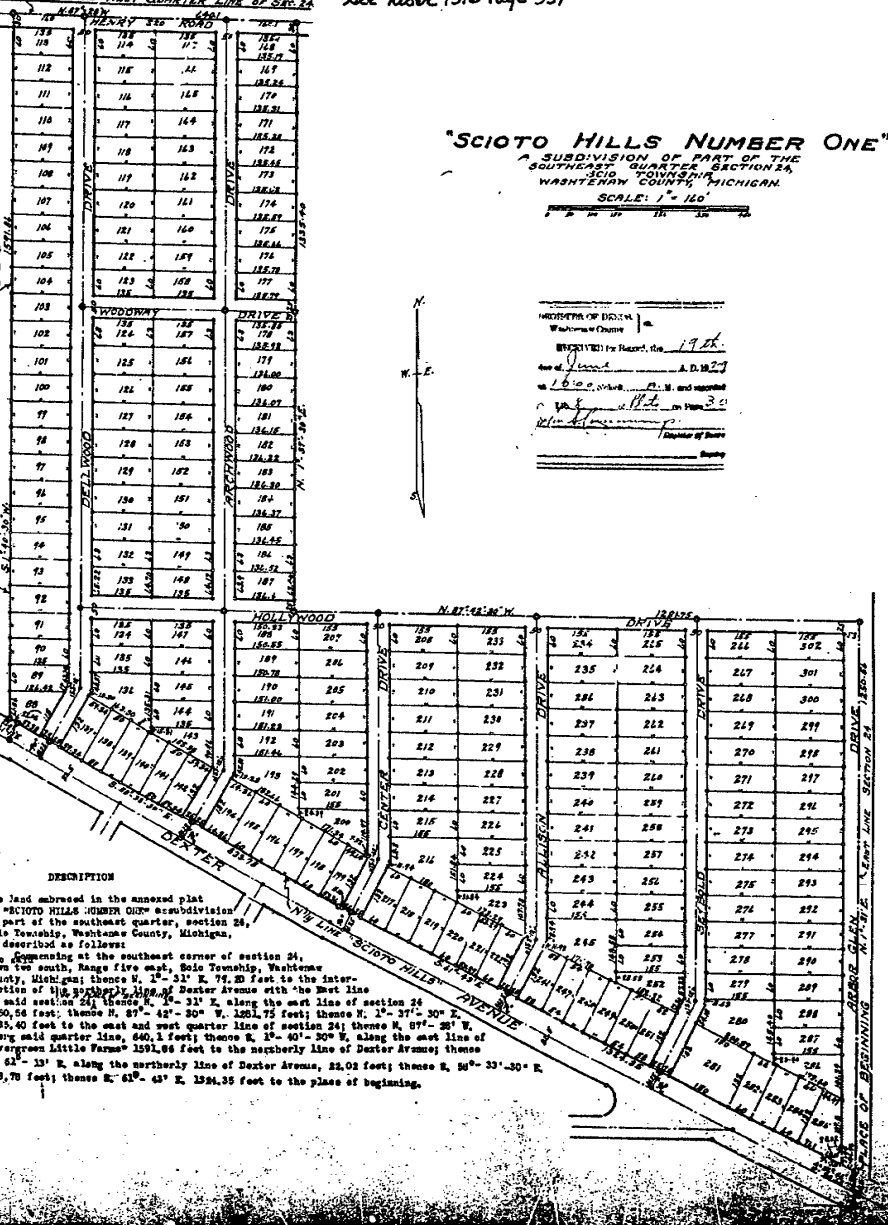
Witness my hand and seal of office at Ann Arbor, Michigan, this 15th day of June, 1919.

DEDICATION

KNOW ALL MEN BY THESE PRESENTS that we, "HARKINS - BOND REALTY COMPANY", a Michigan Company, by James E. Harkins President, and William H. Bond Secretary, as proprietors of Lots 201, 202, 203, 204, 205, 206, 207, 208, 209, 210, 211, 212, 213, 214, 215, 216, 217, 218, 219, 220, 221, 222, 223, 224, 225, 226, 227, 228, 229, 230, 231, 232, 233, 234, 235, 236, 237, 238, 239, 240, 241, 242, 243, 244, 245, 246, 247, 248, 249, 250, 251, 252, 253, 254, 255, 256, 257, 258, 259, 260, 261, 262, 263, 264, 265, 266, 267, 268, 269, 270, 271, 272, 273, 274, 275, 276, 277, 278, 279, 280, 281, 282, 283, 284, 285, 286, 287, 288, 289, 290, 291, 292, 293, 294, 295, 296, 297, 298, 299, 300, 301, 302, 303, 304, 305, 306, 307, 308, 309, 310, 311, 312, 313, 314, 315, 316, 317, 318, 319, 320, 321, 322, 323, 324, 325, 326, 327, 328, 329, 330, 331, 332, 333, 334, 335, 336, 337, 338, 339, 340, 341, 342, 343, 344, 345, 346, 347, 348, 349, 350, 351, 352, 353, 354, 355, 356, 357, 358, 359, 360, 361, 362, 363, 364, 365, 366, 367, 368, 369, 370, 371, 372, 373, 374, 375, 376, 377, 378, 379, 380, 381, 382, 383, 384, 385, 386, 387, 388, 389, 390, 391, 392, 393, 394, 395, 396, 397, 398, 399, 400, 401, 402, 403, 404, 405, 406, 407, 408, 409, 410, 411, 412, 413, 414, 415, 416, 417, 418, 419, 420, 421, 422, 423, 424, 425, 426, 427, 428, 429, 430, 431, 432, 433, 434, 435, 436, 437, 438, 439, 440, 441, 442, 443, 444, 445, 446, 447, 448, 449, 450, 451, 452, 453, 454, 455, 456, 457, 458, 459, 460, 461, 462, 463, 464, 465, 466, 467, 468, 469, 470, 471, 472, 473, 474, 475, 476, 477, 478, 479, 480, 481, 482, 483, 484, 485, 486, 487, 488, 489, 490, 491, 492, 493, 494, 495, 496, 497, 498, 499, 500, 501, 502, 503, 504, 505, 506, 507, 508, 509, 510, 511, 512, 513, 514, 515, 516, 517, 518, 519, 520, 521, 522, 523, 524, 525, 526, 527, 528, 529, 530, 531, 532, 533, 534, 535, 536, 537, 538, 539, 540, 541, 542, 543, 544, 545, 546, 547, 548, 549, 550, 551, 552, 553, 554, 555, 556, 557, 558, 559, 560, 561, 562, 563, 564, 565, 566, 567, 568, 569, 570, 571, 572, 573, 574, 575, 576, 577, 578, 579, 580, 581, 582, 583, 584, 585, 586, 587, 588, 589, 590, 591, 592, 593, 594, 595, 596, 597, 598, 599, 600, 601, 602, 603, 604, 605, 606, 607, 608, 609, 610, 611, 612, 613, 614, 615, 616, 617, 618, 619, 620, 621, 622, 623, 624, 625, 626, 627, 628, 629, 630, 631, 632, 633, 634, 635, 636, 637, 638, 639, 640, 641, 642, 643, 644, 645, 646, 647, 648, 649, 650, 651, 652, 653, 654, 655, 656, 657, 658, 659, 660, 661, 662, 663, 664, 665, 666, 667, 668, 669, 670, 671, 672, 673, 674, 675, 676, 677, 678, 679, 680, 681, 682, 683, 684, 685, 686, 687, 688, 689, 690, 691, 692, 693, 694, 695, 696, 697, 698, 699, 700, 701, 702, 703, 704, 705, 706, 707, 708, 709, 710, 711, 712, 713, 714, 715, 716, 717, 718, 719, 720, 721, 722, 723, 724, 725, 726, 727, 728, 729, 730, 731, 732, 733, 734, 735, 736, 737, 738, 739, 740, 741, 742, 743, 744, 745, 746, 747, 748, 749, 750, 751, 752, 753, 754, 755, 756, 757, 758, 759, 760, 761, 762, 763, 764, 765, 766, 767, 768, 769, 770, 771, 772, 773, 774, 775, 776, 777, 778, 779, 780, 781, 782, 783, 784, 785, 786, 787, 788, 789, 790, 791, 792, 793, 794, 795, 796, 797, 798, 799, 800, 801, 802, 803, 804, 805, 806, 807, 808, 809, 810, 811, 812, 813, 814, 815, 816, 817, 818, 819, 820, 821, 822, 823, 824, 825, 826, 827, 828, 829, 830, 831, 832, 833, 834, 835, 836, 837, 838, 839, 840, 841, 842, 843, 844, 845, 846, 847, 848, 849, 850, 851, 852, 853, 854, 855, 856, 857, 858, 859, 860, 861, 862, 863, 864, 865, 866, 867, 868, 869, 870, 871, 872, 873, 874, 875, 876, 877, 878, 879, 880, 881, 882, 883, 884, 885, 886, 887, 888, 889, 890, 891, 892, 893, 894, 895, 896, 897, 898, 899, 900, 901, 902, 903, 904, 905, 906, 907, 908, 909, 910, 911, 912, 913, 914, 915, 916, 917, 918, 919, 920, 921, 922, 923, 924, 925, 926, 927, 928, 929, 930, 931, 932, 933, 934, 935, 936, 937, 938, 939, 940, 941, 942, 943, 944, 945, 946, 947, 948, 949, 950, 951, 952, 953, 954, 955, 956, 957, 958, 959, 960, 961, 962, 963, 964, 965, 966, 967, 968, 969, 970, 971, 972, 973, 974, 975, 976, 977, 978, 979, 980, 981, 982, 983, 984, 985, 986, 987, 988, 989, 990, 991, 992, 993, 994, 995, 996, 997, 998, 999, 1000.

State of Michigan ss
County of Washtenaw ss
I, Notary Public in and for said County, do hereby certify that the above named James E. Harkins and William H. Bond, as proprietors of the above described lots, known to me to be the persons who executed the above dedication and acknowledged the same to be their free act and deed.

Witness my hand and seal of office at Ann Arbor, Michigan, this 15th day of June, 1919.



"SCIO TO HILLS NUMBER ONE"

A SUBDIVISION OF PART OF THE
SOUTHWEST QUARTER SECTION 24,
SCIO TOWNSHIP,
WASHTENAW COUNTY, MICHIGAN.

SCALE: 1" = 120'

RECORDED BY ORDER OF THE
CLERK OF THE COUNTY OF WASHTENAW
MICHIGAN
THIS 17th DAY OF JUNE 1919
AT ANN ARBOR, MICHIGAN
J. H. BROWN, Notary Public

SURVEYOR'S CERTIFICATE

I hereby certify that the plat hereon delineated is a correct one and that permanent metal monuments of not less than one inch in diameter and fifteen inches in length set in a concrete base at least four inches in diameter and forty-eight inches in length have been placed at points marked thereon as thereon shown at all intersections in the boundaries of the land platted, at all the intersections of streets, intersections of alleys, or of streets and alleys, and at the intersections of streets and alleys with the boundaries of the plat as shown on said plat.

H. H. Abbott
Reg. Civil Engineer

TAX CERTIFICATE

OFFICE OF THE COUNTY TREASURER, WASHTENAW COUNTY, MICHIGAN.

I hereby certify that there are no tax liens or titles held by the State on the lands described here, and that there are no special taxes or titles held by individuals on said lands for the five years preceding the 1st day of January, 1919, and that the taxes for said period of five years are fully paid as shown on the records of this office.

Wm. A. McWhorter
County Treasurer

CERTIFICATE OF APPROVAL BY THE TOWNSHIP BOARD

This plat was approved by the Township Board of the Township of Scio, Washtenaw County, Michigan, at a meeting held May 27, 1919.

J. H. Brown
Chairman

CERTIFICATE OF APPROVAL BY THE BOARD OF COUNTY AUDITORS

This plat was approved by the Board of County Auditors of Washtenaw County, Michigan, this 11th day of June, 1919.

J. H. Brown
Chairman
Edward L. Brown

Note: All dimensions are given in feet and decimals thereof.

See Liber 994-Page 387

DEXTER AVENUE HILLS

A SUBDIVISION OF PART OF THE
WEST HALF OF SECTION 24,
SCIO TOWNSHIP,
WASHTENAW COUNTY, MICHIGAN.

SCALE: ONE INCH = TWO HUNDRED FEET.

DEDICATION
FOR ALL MEN BY THESE PRESENTS, That we "DEXTER AVENUE HILLS LAND COMPANY" a Michigan corporation by Jay G. Pray President, and John F. Kilbourn Secretary as proprietors, and the "FARMERS AND MECHANICS BANK" a Michigan corporation by Herbert A. Williams President, and Fred T. Stoss Cashier as mortgagees, have caused the land embraced in the annexed plat to be surveyed, laid out and platted to be known as "DEXTER AVENUE HILLS", a subdivision of part of the west half of section 24, Scio Township, Washtenaw County, Michigan, and that the streets and alleys as shown on said plat are hereby dedicated to the use of the public.

"DEXTER AVENUE HILLS LAND COMPANY"
"FARMERS AND MECHANICS BANK"

Signed and Sealed in the presence of

Jay G. Pray President
John F. Kilbourn Secretary

STATE OF MICHIGAN

SS
COUNTY OF WASHTENAW
On this 11th day of August, 1925, before me, Herbert A. Williams, a Notary Public in and for said county appeared Jay G. Pray, and John F. Kilbourn to me personally known, who being each by me duly sworn did say that they are the President and Secretary respectively of the "DEXTER AVENUE HILLS LAND COMPANY", a Michigan corporation, and that the seal affixed to said instrument is the corporate seal of said corporation and that said instrument was signed and sealed in behalf of said corporation by authority of its Board of Directors and the said Jay G. Pray and John F. Kilbourn acknowledged said instrument to be the free act and deed of said corporation.

Herbert A. Williams
Notary Public, Washtenaw County, Mich.

My commission expires Jan 9, 1927

Signed and Sealed in the presence of

Herbert A. Williams President
Fred T. Stoss Cashier

STATE OF MICHIGAN

TS
COUNTY OF WASHTENAW
On this 11th day of August, 1925, before me, Herbert A. Williams, a Notary Public in and for said county appeared Herbert A. Williams and Fred T. Stoss to me personally known, who being each by me duly sworn did say that they are the President and Cashier respectively of the "FARMERS AND MECHANICS BANK", a Michigan corporation, and that the seal affixed to said instrument is the corporate seal of said corporation and that said instrument was signed and sealed in behalf of said corporation by authority of its Board of Directors and the said Herbert A. Williams and Fred T. Stoss acknowledged said instrument to be the free act and deed of said corporation.

Herbert A. Williams
Notary Public, Washtenaw County, Mich.

My commission expires March 10, 1928

CERTIFICATE OF APPROVAL

BY THE TOWNSHIP BOARD
This plat was approved by the Township Board of the Township of Scio, Washtenaw County, Michigan, at a meeting held on Jan 11, 1925

CERTIFICATE OF APPROVAL

BY THE BOARD OF COUNTY AUDITORS
Approved by the Board of County Auditors of Washtenaw County, Michigan, on this 11th day of August, 1925.

John F. Kilbourn Chairman
Herbert A. Williams

DESCRIPTION
The land embraced in the annexed plat of "DEXTER AVENUE HILLS" a subdivision of part of the west half of section 24, Scio Township, Washtenaw County, Michigan is described as follows: Commencing at the center of section 24, Twp 24 S., Range 15 E., Meridian of Michigan; thence N. 7° - 44' E. along the quarter line 1310.95 feet to the center line of Dexter Road, said course being the west line of the plat of "KRYGANSKI LITTLE FARM" subdivision; thence N. 61° - 13' W. along the center line of Dexter Road 29.31 feet; thence continuing along said center line N. 63° - 24' W. 650.56 feet; thence S. 85° - 07' W. 541.32 feet; thence S. 77° - 37' - 05" W. 45.12 feet; thence S. 1° - 44' E. 120.15 feet to the east and west quarter line of said section 24; thence S. 87° - 25' E. along said quarter line 171.9 feet; thence S. 1° - 07' - 30" E. 722.5 feet; thence S. 21° - 54' E. 272.4 feet; thence S. 1° - 04' E. 504.3 feet; thence S. 87° - 25' E. 24.82 feet; thence S. 15° - 05' E. 756.3 feet; thence S. 77° - 44' E. 427.35 feet; thence S. 1° - 05' E. 756.3 feet; thence S. 85° - 15' E. 274.35 feet to an iron stake at 213.2 feet west of the north and south quarter line; thence S. 1° - 44' E. 1203.5 feet to the east and west quarter line; thence S. 87° - 25' E. along said quarter line 213.2 feet to the place of beginning.

CHARTERED CERTIFICATE

I hereby certify that the plat herein delineated is a correct one and that permanent metal monuments of not less than one inch in diameter and fifteen inches in length set in a concrete base at least four inches in diameter and forty-eight inches in depth have been placed at points marked thereon as shown at all angles in the boundaries of the land platted, at all the intersections of streets, intersections of alleys, or of streets and alleys, and at the intersections of streets and alleys with the boundaries of the plat as shown on said plat.

W. H. Hall
Registered Civil Engineer.

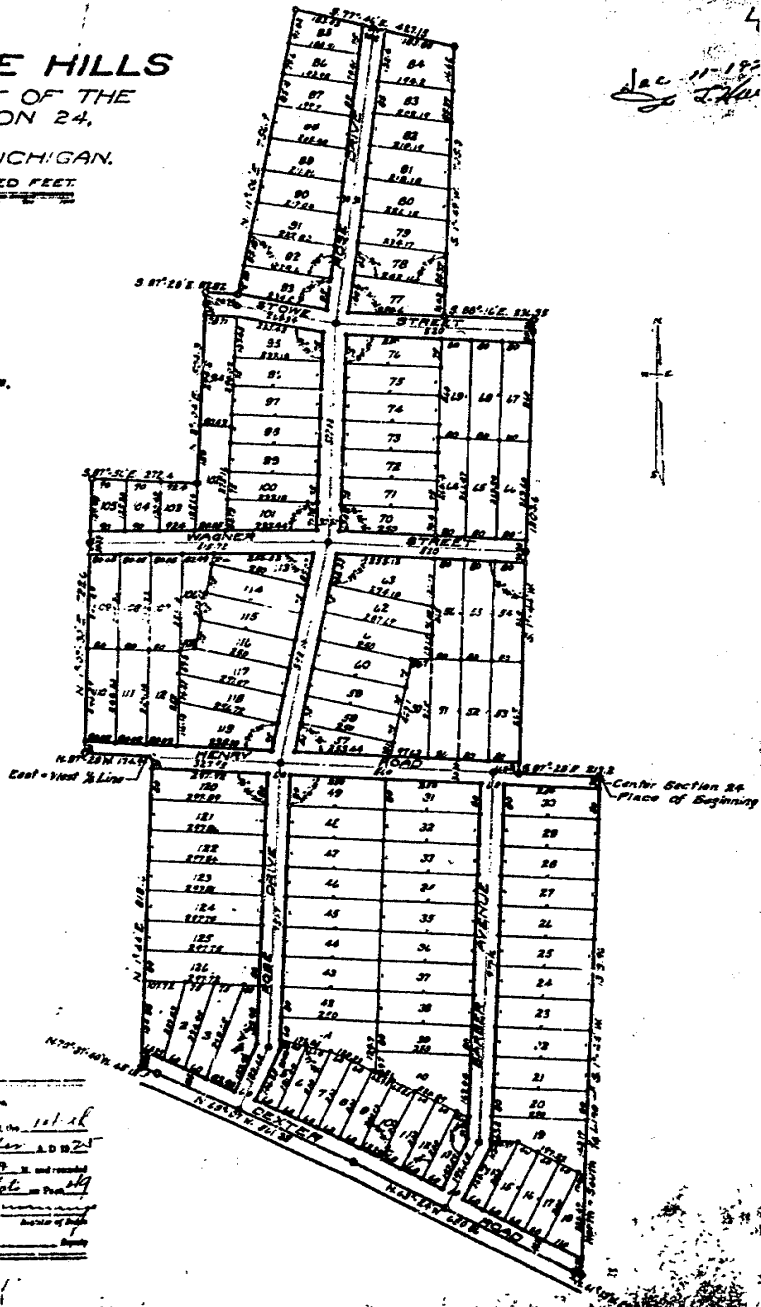
TAX CERTIFICATE

OFFICE OF THE COUNTY TREASURER
WASHTENAW COUNTY, MICHIGAN.
I hereby certify that there are no tax liens or titles held by the State on the lands described above, and that there are no tax liens or titles held by individuals on said lands for the five years preceding the 11th day of August, 1925 and that the taxes for said period of five years are paid, as shown by the records of this office.

Marjorie B. Blum
County Treasurer.

Note: All dimensions are given in feet and decimals thereof.

RECORDED
INDEXED
1925
John F. Kilbourn
Notary Public



STATE OF MICHIGAN
COUNTY OF WASHTENAW

See Liber 994 page 387 See Liber 1050 Page 067

See Liber 1054 Page 518

'THE EVERGREENS'

A SUBDIVISION OF PART OF THE SOUTH HALF,
SECTION 24, SCIO TOWNSHIP,
WASHTENAW COUNTY, MICHIGAN.
SCALE: ONE INCH = ONE HUNDRED SIXTY FEET.

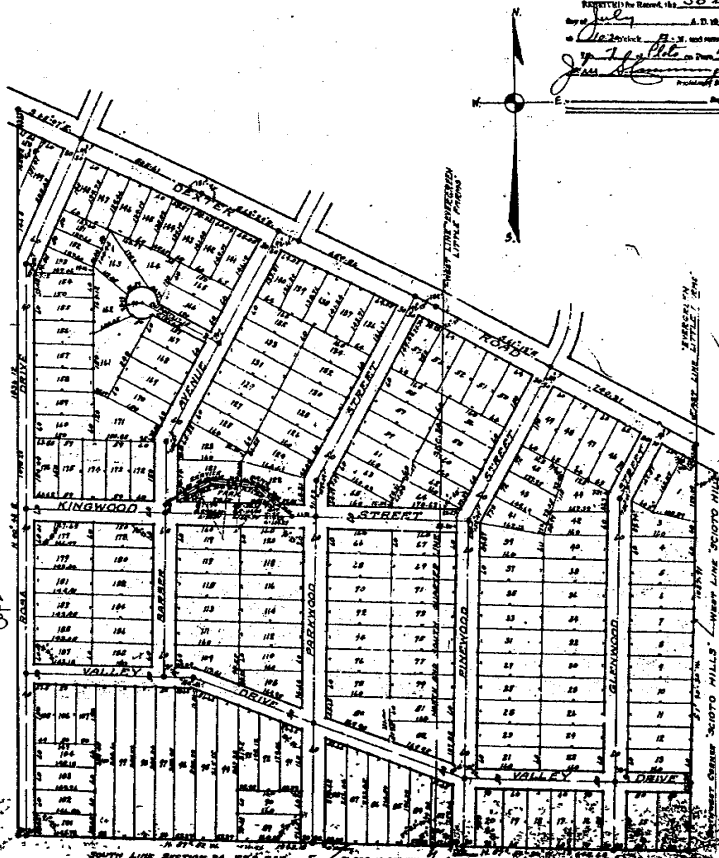
DESCRIPTION
KNOW ALL MEN BY THESE PRESENTS, That on March 8 Schaffer as proprietor Charles I. Brooks and Laura P. Brooks, husband and wife, Myrard A. Norton and Flora Norton, husband and wife, Floyd A. Bergman and Mildred T. Bergman, husband and wife, and Ralph R. Loring and a single man of Washtenaw, have caused the land embraced in the annexed plat to be surveyed, laid out and plotted to be known as "THE EVERGREENS" a subdivision of part of the south half, section 24, Scio Township, Washtenaw County, Michigan, and that the streets and alleys shown on said plat are hereby dedicated to the use of the public.

Witness my hand and seal in the presence of
Charles I. Brooks (LA)
Laura P. Brooks (LA)
Myrard A. Norton (LA)
Flora Norton (LA)
Floyd A. Bergman (LA)
Mildred T. Bergman (LA)
Ralph R. Loring (LA)
John A. Schaffer (LA)
State of Michigan

Subscribed and sworn to before me a Notary Public in and for said county personally once the above named Charles I. Brooks and Laura P. Brooks, husband and wife, Myrard A. Norton and Flora Norton, husband and wife, Floyd A. Bergman and Mildred T. Bergman, husband and wife, and Ralph R. Loring a single man, known to me to be the persons who executed the above declaration and acknowledged the same to be their free act and deed.
Notary Public in Washtenaw County, Michigan.
My commission expires July 1, 1926.

DESCRIPTION
KNOW ALL MEN BY THESE PRESENTS, That J. John C. Fritz administrator for the estate of Clara M. Fritz, pursuant to the provisions of order of administration granted by the Judge of Probate for Washtenaw County, Michigan, dated February 24, 1925, and on record in the Probate office as proprietor, have caused the land embraced in the annexed plat to be surveyed, laid out and plotted to be known as "THE EVERGREENS" a subdivision of part of the south half section 24, Scio Township, Washtenaw County, Michigan, and that the streets and alleys as shown on said plat are hereby dedicated to the use of the public.

Witness my hand and seal in the presence of
William C. Mohr (LA)
State of Michigan
County of Washtenaw
On this 22nd day of June, 1927 before me a Notary Public in and for said county, personally and the above named John C. Fritz, administrator for the estate of Clara M. Fritz, known to me to be the person who executed the above declaration and acknowledged the same to be their free act and deed.
Notary Public, Washtenaw County, Michigan.
My commission expires July 1, 1927.



REGISTERED IN THE RECORDS OF THE
Washtenaw County
RECORDED IN THE RECORDS OF THE
A. D. 1927
JUL 1 1927

DESCRIPTION
The land embraced in the annexed plat of "THE EVERGREENS" a subdivision of part of the south half, section 24, Scio Township, Washtenaw County, Michigan, is described as follows: Commencing at the south quarter post of section 24, from the south, range 17th east, Washtenaw County, Michigan, thence N. 87° - 55' E., along the southeast corner of said section 24, 20 feet, thence N. 00° - 00' E. 200.00 feet to the center line of Dexter Road; thence S. 88° - 07' E. along said center line 200.00 feet; thence S. 88° - 07' E. along said center line of Dexter Road N. 83° - 56' E. 200.00 feet; thence S. 83° - 56' E. along said center line N. 83° - 56' E. 170.00 feet to the west line of "Slate Hill"; thence N. 1° - 00' E. 170.00 feet along said west line 170.00 feet to the south line of section 24; thence N. 87° - 55' E., along said south line 60.00 feet to the place of beginning.

TAX CERTIFICATE
OFFICE OF THE COUNTY TREASURER
WASHTENAW COUNTY, MICHIGAN
I hereby certify that there are no tax liens or claims held by the State on the lands described hereon, and that there are no tax liens or claims held by individuals on said lands for the five years preceding the 1st day of January, 1927, and that the same for said period of five years are paid as shown by the records of this office.
Francis W. D. ...
County Treasurer

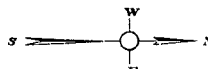
NOTARY'S CERTIFICATE
I hereby certify that the plat herein delineated has been laid out and that permanent metal monuments of not less than three inch in diameter and fifteen inches in length and in a corner at least four inches in diameter and forty-eight inches high have been placed at points marked thereon, so however that at all angles in the boundaries of the land plotted, at all intersections of streets, intersections of alleys, or at the alleys, and at the intersections of streets and alleys, the boundaries of the plat, as shown on said plat.
H. H. ...
Registered Civil Engineer

CERTIFICATE OF APPROVAL
BY THE BOARD OF COUNTY SUPERVISORS
This plat was approved by the Board of County Supervisors of Washtenaw County, Michigan, at a meeting held July 1, 1927.
James A. ...
Chairman
Charles R. ...

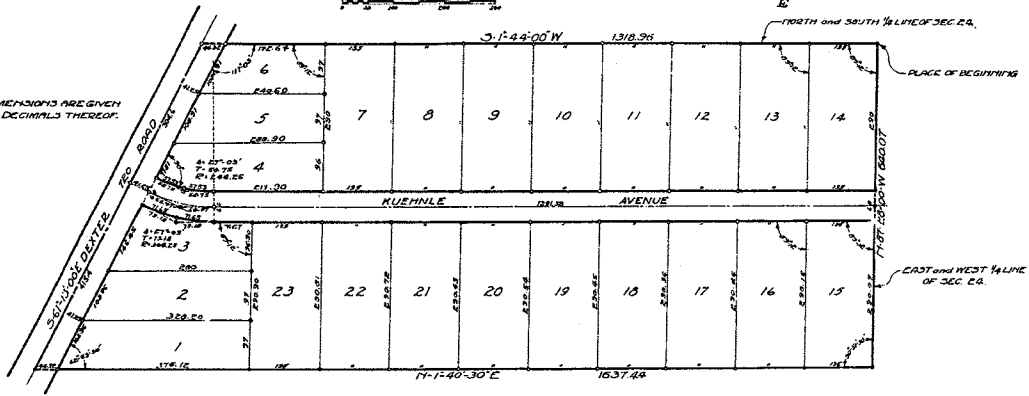
CERTIFICATE OF APPROVAL
BY THE TOWNSHIP BOARD
This plat was approved by the Township Board of the Township of Scio, Washtenaw County, Michigan, at a meeting held July 1, 1927.
J. J. ...

"EVERGREEN LITTLE FARMS"
 A SUBDIVISION OF PART OF THE
 SOUTHEAST ONE-QUARTER OF SECTION 24,
 TOWN 2 SOUTH, RANGE 5 EAST,
 WASHTENAW COUNTY, MICHIGAN.

SCALE: ONE INCH = ONE HUNDRED FEET.



NOTE: ALL DIMENSIONS ARE GIVEN IN FEET AND DECIMALS THEREOF.



DEDICATION.
 Wherein all men by these presents, that in, to, and for the use of the State of Michigan, the County of Washtenaw, and the Township of ...
 I, the undersigned, do hereby certify that the lands described herein are held by me in fee simple and that the same are not subject to any lien or claim of any person other than myself.

TAX CERTIFICATE.
 I hereby certify that the lands described herein are not subject to any lien or claim of any person other than myself.

DESCRIPTION.
 The land shown in the annexed plat of "EVERGREEN LITTLE FARMS" is a subdivision of part of the southeast one-quarter of section 24, town 2 south, range 5 east, washtenaw county, Michigan, as described as follows: Commencing at the center of section 24, town 2 south, range 5 east, township of ...

SURVEYOR'S CERTIFICATE.
 I hereby certify that the plat hereto attached is correct and true and that the monuments, consisting of iron pipes, are well set in place and that the corners and points of the land have been plainly marked and that the lines of the land are correctly shown.

CERTIFICATE OF APPROVAL BY THE BOARD OF COUNTY COMMISSIONERS.
 Approved by the Board of County Commissioners of Washtenaw County, Michigan, this ... day of ... 1923.

CERTIFICATE OF APPROVAL BY THE TOWNSHIP BOARD.
 This plat was approved by the Township Board of ... Washtenaw County, Michigan, on ... day of ... 1923.

WASHTENAW COUNTY, MICHIGAN
 COUNTY CLERK
 J. J. ...

RE-SUBDIVISION OF
EVERGREEN LITTLE FARMS
SOUTHEAST ONE-QUARTER OF SECTION 24
TOWN TWO SOUTH, RANGE FIVE EAST,
WASHTENAW COUNTY, MICHIGAN

SCALE ONE INCH = ONE HUNDRED FEET

RECIPIENTS

KNOW ALL MEN BY THESE PRESENTS, that on Roland K. Kistler and Ethel M. Kistler his wife, as proprietors have caused the land embraced in the annexed plat to be surveyed, laid out and platted, to be divided into "EVERGREEN LITTLE FARMS", a subdivision of a part of the southeast one quarter of section 24, town two south, range five east, Washtenaw County, Michigan, and that the interests as above so laid out are hereby dedicated to the use of the public.

KNOW ALL MEN BY THESE PRESENTS, that on Roland K. Kistler and Ethel M. Kistler his wife, as proprietors have caused the land embraced in the annexed plat to be surveyed, laid out and platted, to be divided into "EVERGREEN LITTLE FARMS", a subdivision of a part of the southeast one quarter of section 24, town two south, range five east, Washtenaw County, Michigan, and that the interests as above so laid out are hereby dedicated to the use of the public.

STATE OF MICHIGAN
COUNTY OF WASHTENAW

On this 30 day of July 1926, before me a Notary Public in and for the County of Washtenaw, Michigan, personally came the above named Roland K. Kistler and Ethel M. Kistler his wife, known to me to be the persons who execute the above definition, and acknowledged the same to be their free act and deed.

Notary Public, Washtenaw County, Michigan
May 10 1926

DESCRIPTION

The land embraced in the annexed plat of "EVERGREEN LITTLE FARMS" subdivision of a part of the southeast one quarter of section 24, town two south, range five east, Washtenaw County, Michigan, is described as follows: Commencing at the center point of section 24, town two south, range five east, Meridian of Michigan thence S 1° 45' 00" E, along the north and south quarter line of said section 24 132 1/2 feet, to the intersection with the center line of Dexter Road, thence S 81° 13' 20" E, along the center line of Dexter Road 762.00 feet, thence S 7° 01' 30" E, 1277.66 feet to a point in the east and west quarter line of section 24, thence S 87° 25' W, 640 feet to the place of beginning.

TAX CERTIFICATE

OFFICE OF THE COUNTY TREASURER, WASHTENAW COUNTY, MICHIGAN

I hereby certify, that there are no tax liens or claims held by the State on the lands described above, and that there are no tax liens or claims held by the State on said lands, for the five years preceding the date of this certificate, and that the taxes for said period of five years are fully paid, as shown by the records of this office.

Notary E. Blum
County Treasurer

SURVEY CERTIFICATE

I hereby certify, that the plat herein illustrated is a correct and true and accurate survey, consisting of iron pipes one-half inch or more in diameter and twenty inches or more in length have been placed at points marked "A" as shown above at all angles in the boundaries of the land platted and at all intersections of streets.

H. H. Atwell
Registered Civil Engineer

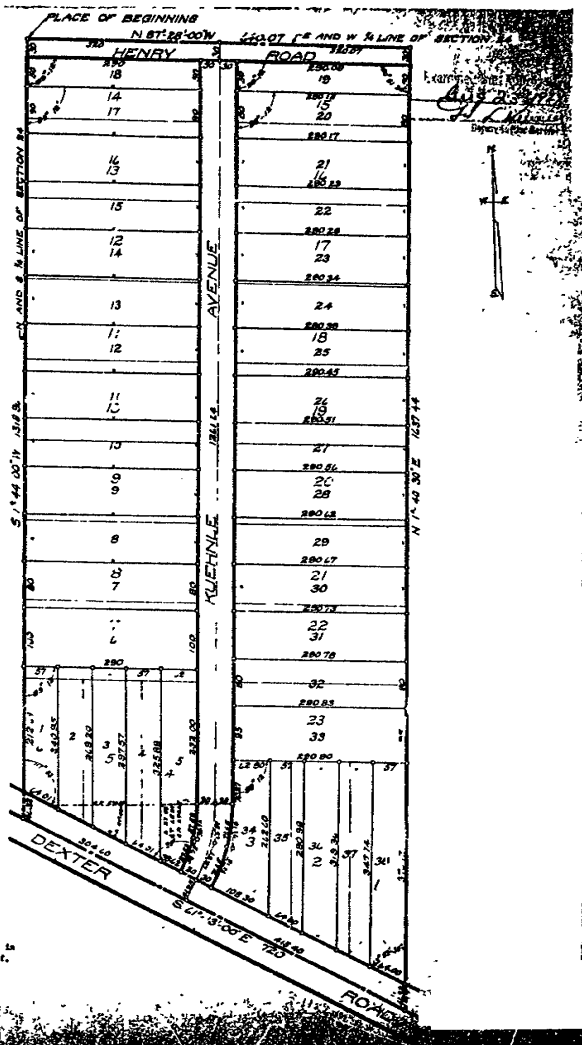
CERTIFICATE OF APPROVAL
BY THE BOARD OF COUNTY SUPERVISORS OF WASHTENAW COUNTY, MICHIGAN, THIS 4 DAY OF August 1926

William M. Fowler Chairman
Edwin L. Brown

CERTIFICATE OF APPROVAL
BY THE TOWNSHIP BOARD

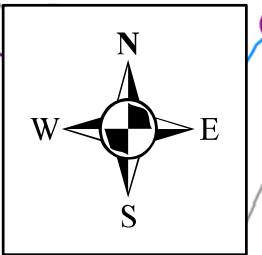
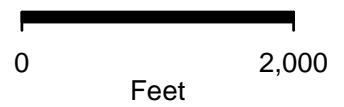
This plat was approved by the Township Board of the Township of Washtenaw County, Michigan, at a meeting held on the 12th day of July 1926.

John A. Smith
Clerk





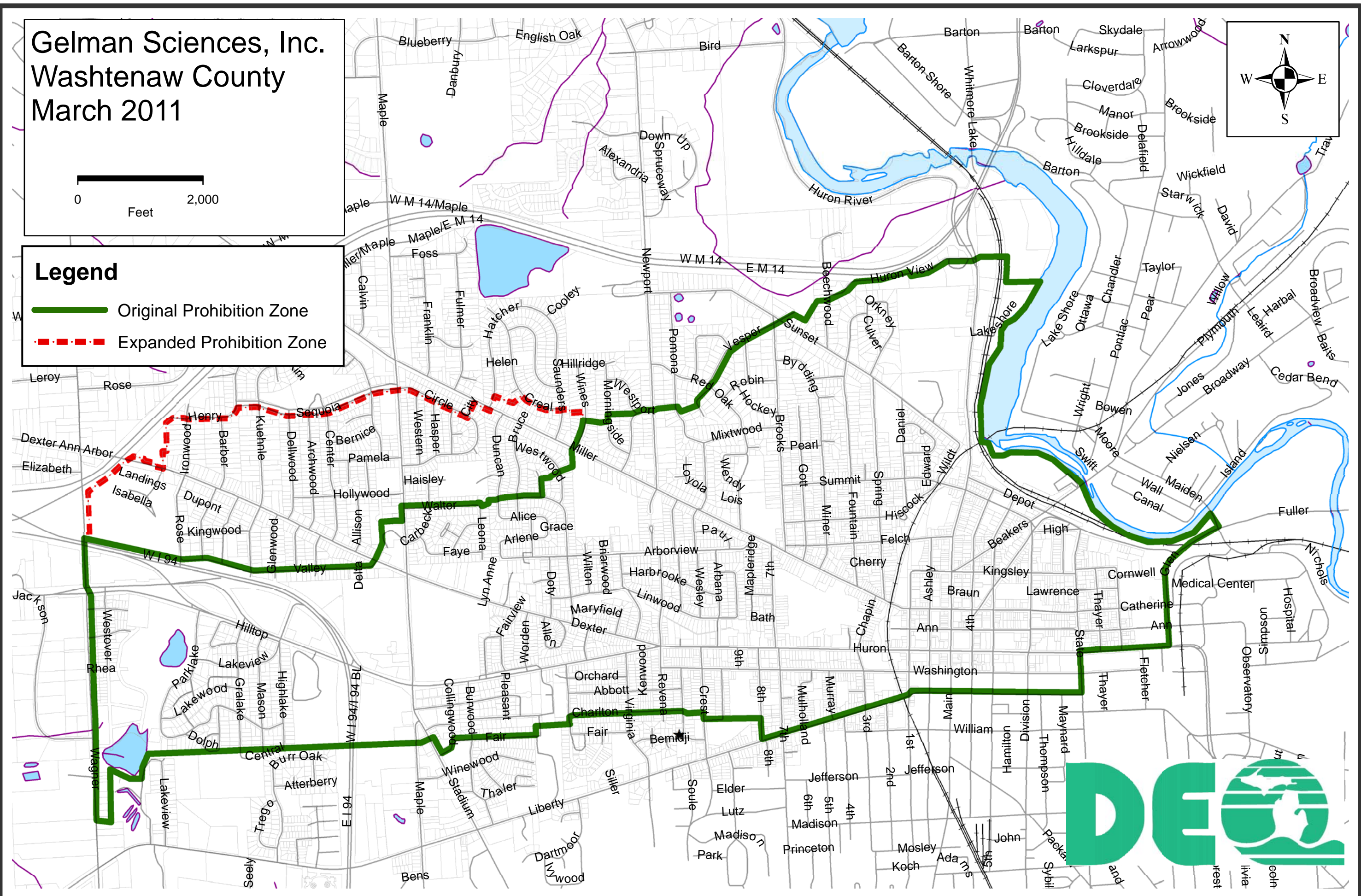
Note: All dimensions are given in Feet and Decimals thereof.

Gelman Sciences, Inc. Washtenaw County March 2011



Legend

-  Original Prohibition Zone
-  Expanded Prohibition Zone



STATE OF MICHIGAN

IN THE CIRCUIT COURT FOR THE COUNTY OF WASHTENAW

JENNIFER M. GRANHOLM, Attorney
General for the State of Michigan, *ex rel*,
MICHIGAN DEPARTMENT OF
ENVIRONMENTAL QUALITY,

Plaintiffs,

File No. 88-34734-CE

v

Honorable Donald E. Shelton

GELMAN SCIENCES, INC.,
a Michigan corporation,

Defendant.

ORDER PROHIBITING GROUNDWATER USE

At a session of said Court held in the City of Ann Arbor, County of Washtenaw, Michigan, on the 17th day of May, 2005.

PRESENT: HONORABLE DONALD E. SHELTON
Circuit Court Judge

On December 17, 2004, this Court issued its Opinion and Order Regarding Remediation of the Contamination of the "Unit E" Aquifer. That Opinion and Order resolved a dispute between the Parties regarding the September 1, 2004 Decision Document issued by the Michigan Department of Environmental Quality (MDEQ) regarding remediation of the "Unit E" groundwater contamination emanating from the Pall Life Sciences (PLS) (formerly known as Gelman Sciences, Inc.) facility in Scio Township, Washtenaw County.

Among other things, this Court determined that in order to satisfy the requirements of MCL 324.20118(6)(d) and MCL 324.20120b(5) for institutional controls preventing

unacceptable exposure to 1,4-dioxane in the groundwater, it is necessary and appropriate to supplement the Washtenaw County Rules and Regulations for the Protection of Groundwater adopted February 4, 2004, with a legally enforceable order of this Court prohibiting certain groundwater uses in specifically defined areas and addressing the relevant conditions identified in the MDEQ's September 1, 2004 Decision Document.

ACCORDINGLY, pursuant to the December 17, 2004 Opinion and Order, based upon further information provided by the Parties, for the reasons stated by the Court in its May 4, 2005 ruling on Plaintiffs' Motion to Enter Order Prohibiting Groundwater Use, and in the exercise of this Court's statutory and inherent authority to enforce its orders and judgments,

IT IS HEREBY ORDERED:

1. The prohibitions imposed by this Order apply to the zone identified in the map attached hereto as Figure 1 (Prohibition Zone).
2. The installation by any person of a new water supply well in the Prohibition Zone for drinking, irrigation, commercial, or industrial use is prohibited.
3. The Washtenaw County Health Officer or any other entity authorized to issue well construction permits shall not issue a well construction permit for any well in the Prohibition Zone.
4. The consumption or use by any person of groundwater from the Prohibition Zone is prohibited.
5. The prohibitions listed in paragraphs 2, 3, and 4 do not apply to the installation and use of:

(a) groundwater extraction and monitoring wells as part of response activities approved by MDEQ or otherwise authorized under Parts 201 or 213 of NREPA, or other legal authority.

(b) dewatering wells for lawful construction or maintenance activities, provided that appropriate measures are taken to prevent unacceptable human or environmental exposures to hazardous substances and comply with MCL 324.20107a.

(c) wells supplying heat pump systems that either operate in a closed loop system, or if not, are demonstrated to operate in a manner sufficient to prevent unacceptable human or environmental exposures to hazardous substances and comply with MCL 324.20107a.

(d) emergency measures necessary to protect public health, safety, welfare or the environment.

(e) any existing water supply well that has been demonstrated, on a case-by-case basis and with the written approval of the MDEQ, to draw water from a formation that is not likely to become contaminated with 1,4-dioxane emanating from the PLS facility. Such wells shall be monitored for 1,4-dioxane by PLS at a frequency determined by the MDEQ.

6. PLS shall provide, at its expense, connection to the City of Ann Arbor municipal water supply to replace any existing private drinking water wells within the Prohibition Zone. Within thirty (30) days after entry of this Order, PLS shall submit to MDEQ for review and approval a work plan for identifying, or verifying the absence of, any private wells within the Prohibition Zone, for the abandonment of any such private wells and for replacement of private drinking water wells with connection to the municipal water supply. Well abandonment and replacement shall be performed in accordance with all applicable regulations and procedures at the expense of PLS. PLS shall implement the work plan and schedule approved by MDEQ.

7. This Order shall be published and maintained in the same manner as a zoning ordinance.

8. This Order shall remain in effect in this form until such time as it is amended or rescinded by further order of this Court, with a minimum of thirty (30) days prior notice to all Parties.

9. Either Party may move to amend the boundaries of the Prohibition Zone to reflect material changes in the boundaries or fate of the groundwater contamination plume as described by future hydrogeological investigation or MDEQ approved monitoring of the fate of the groundwater contamination.

10. In the event the boundary of the Prohibition Zone is expanded, PLS shall, within thirty (30) days after entry of such an Order, submit to the MDEQ for review and approval, a work plan for identifying, or verifying the absence of any private wells within the modified Prohibition Zone, for the abandonment of any such private wells, and for the connection to the municipal water supply to replace any drinking water wells within the modified Prohibition Zone.

11. Either Party or a local unit of government having jurisdiction within the Prohibition Zone may seek enforcement of this Order by the Court.

12. This Order shall not affect the rights, liabilities, or defenses of any party in any other legal or administrative proceeding, nor shall it constitute evidence of either the presence or absence of 1,4-dioxane at any location inside or outside the Prohibition Zone in any such proceeding.

/s/ DONALD E. SHELTON

HONORABLE DONALD E. SHELTON
Circuit Court Judge

APPROVED AS TO FORM:

Robert P. Reichel

Robert P. Reichel (P31878)
Assistant Attorney General
Attorney for Plaintiffs

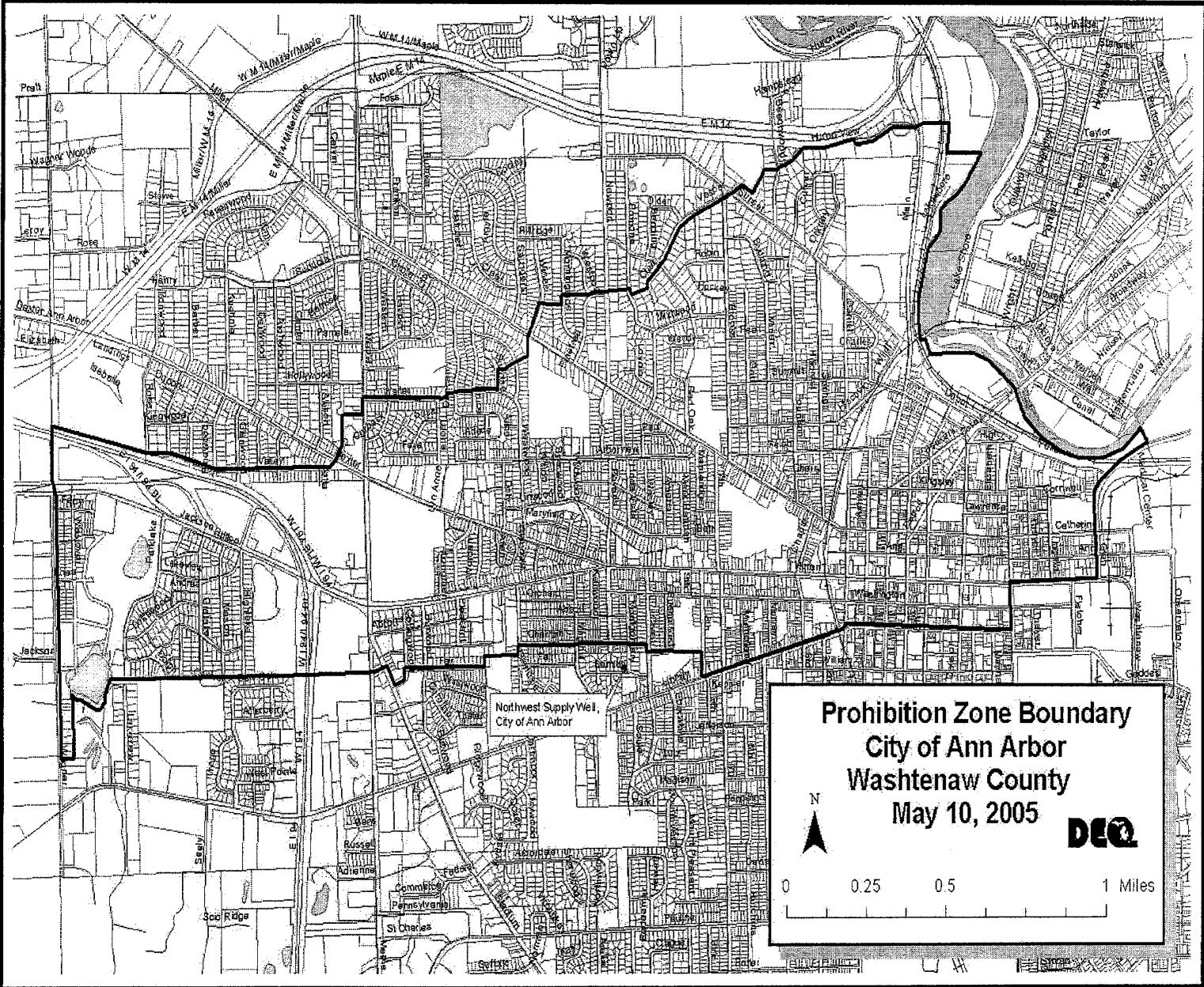
Michael L. Caldwell by PPR

Michael L. Caldwell (P40554)
Alan D. Wasserman (P39509)
Attorneys for Defendant

*with
consent*

Gelman/1989001467/Order3

Gelman Sciences Inc. Prohibition Zone Boundary



**East of Maple - Cover Letter, Survey, PZ Order, Map, SASE .
Mailed 7/7/11**

Re: Address	Mailing Address Line 2	Mailing Address Line 3
825 Duncan St (Haisley Elementary School)	2555 S State	Ann Arbor MI 48104
1775 Miller Ave	1775 Miller Ave	Ann Arbor MI 48103
1785 Miller Ave	1785 Miller Ave	Ann Arbor MI 48103
1788 Miller Ave	1788 Miller Ave	Ann Arbor MI 48103
1792 Miller Ave	1792 Miller Ave	Ann Arbor MI 48103
1792 Miller Ave	4044 Iris Drive	East Tawas MI 48730
1795 Miller Ave	1795 Miller Ave	Ann Arbor MI 48103
1801 Miller Ave	1801 Miller Ave	Ann Arbor MI 48103
1860 Miller Ave	1860 Miller Ave	Ann Arbor MI 48103
1884 Miller Ave	1884 Miller Ave	Ann Arbor MI 48103
1916 Miller Ave	1916 Miller Ave	Ann Arbor MI 48103
1920 Miller Ave	1920 Miller Ave	Ann Arbor MI 48103
1980 Miller Ave	1980 Miller Ave	Ann Arbor MI 48103
1990 Miller Ave	1990 Miller Ave	Ann Arbor MI 48103
1108 Saunders Cres	1108 Saunders Cres	Ann Arbor MI 48103
1121 Saunders Cres	1121 Saunders Cres	Ann Arbor MI 48103

**- Cover Letter, Survey, PZ Order, Map, SASE Mailed
7/8/11**

Re: Address	Mailing Address Line 2	Mailing Address Line 3
514 Allison Dr	514 Allison Dr	Ann Arbor, MI 48103
522 Allison Dr	522 Allison Dr	Ann Arbor, MI 48103
557 Allison Dr	557 Allison Dr	Ann Arbor, MI 48103
580 Allison Dr	580 Allison Dr	Ann Arbor, MI 48103
584 Allison Dr	584 Allison Dr	Ann Arbor, MI 48103
597 Allison Dr	597 Allison Dr	Ann Arbor, MI 48103
620 Allison Dr	620 Allison Dr	Ann Arbor, MI 48103
645 Allison Dr	645 Allison Dr	Ann Arbor, MI 48103
690 Allison Dr	690 Allison Dr	Ann Arbor, MI 48103
693 Allison Dr	693 Allison Dr	Ann Arbor, MI 48103
530 Archwood Dr	530 Archwood Dr	Ann Arbor, MI 48103
545 Archwood Dr	545 Archwood Dr	Ann Arbor, MI 48103
546 Archwood Dr	546 Archwood Dr	Ann Arbor, MI 48103
559 Archwood Dr	559 Archwood Dr	Ann Arbor, MI 48103
560 Archwood Dr	560 Archwood Dr	Ann Arbor, MI 48103
574 Archwood Dr	574 Archwood Dr	Ann Arbor, MI 48103
575 Archwood Dr	575 Archwood Dr	Ann Arbor, MI 48103
581 Archwood Dr	581 Archwood Dr	Ann Arbor, MI 48103
590 Archwood Dr	1006 Banister Apt 602	Austin, TX 78704
590 Archwood Dr	590 Archwood Dr	Ann Arbor, MI 48103
610 Archwood Dr	610 Archwood Dr	Ann Arbor, MI 48103
615 Archwood Dr	615 Archwood Dr	Ann Arbor, MI 48103
625 Archwood Dr	625 Archwood Dr	Ann Arbor, MI 48103
626 Archwood Dr	3476 Stateview Blvd	Fort Mill, SC 29715
626 Archwood Dr	626 Archwood Dr	Ann Arbor, MI 48103
629 Archwood Dr	629 Archwood Dr	Ann Arbor, MI 48103
630 Archwood Dr	630 Archwood Dr	Ann Arbor, MI 48103
633 Archwood Dr	633 Archwood Dr	Ann Arbor, MI 48103
641 Archwood Dr	641 Archwood Dr	Ann Arbor, MI 48103
642 Archwood Dr	642 Archwood Dr	Ann Arbor, MI 48103
650 Archwood Dr	650 Archwood Dr	Ann Arbor, MI 48103
651 Archwood Dr	651 Archwood Dr	Ann Arbor, MI 48103
660 Archwood Dr	660 Archwood Dr	Ann Arbor, MI 48103
661 Archwood Dr	661 Archwood Dr	Ann Arbor, MI 48103
670 Archwood Dr	670 Archwood Dr	Ann Arbor, MI 48103
671 Archwood Dr	671 Archwood Dr	Ann Arbor, MI 48103
680 Archwood Dr	680 Archwood Dr	Ann Arbor, MI 48103
681 Archwood Dr	681 Archwood Dr	Ann Arbor, MI 48103
690 Archwood Dr	2133 Delaware Dr	Ann Arbor, MI 48103
690 Archwood Dr	690 Archwood Dr	Ann Arbor, MI 48103
Archwood Dr 704	2909 Laurentide Dr	Ann Arbor, MI 48103
704 Archwood Dr	704 Archwood Dr	Ann Arbor, MI 48103
711 Archwood Dr	711 Archwood Dr	Ann Arbor, MI 48103
714 Archwood Dr	714 Archwood Dr	Ann Arbor, MI 48103
724 Archwood Dr	724 Archwood Dr	Ann Arbor, MI 48103
725 Archwood Dr	725 Archwood Dr	Ann Arbor, MI 48103
734 Archwood Dr	734 Archwood Dr	Ann Arbor, MI 48103
744 Archwood Dr	744 Archwood Dr	Ann Arbor, MI 48103
745 Archwood Dr	745 Archwood Dr	Ann Arbor, MI 48103
754 Archwood Dr	754 Archwood Dr	Ann Arbor, MI 48103
755 Archwood Dr	755 Archwood Dr	Ann Arbor, MI 48103
764 Archwood Dr	764 Archwood Dr	Ann Arbor, MI 48103
765 Archwood Dr	765 Archwood Dr	Ann Arbor, MI 48103

**- Cover Letter, Survey, PZ Order, Map, SASE Mailed
7/8/11**

Re: Address	Mailing Address Line 2	Mailing Address Line 3
774 Archwood Dr	774 Archwood Dr	Ann Arbor, MI 48103
775 Archwood Dr	775 Archwood Dr	Ann Arbor, MI 48103
475 Barber Ave	475 Barber Ave	Ann Arbor, MI 48103
608 Barber Ave	608 Barber Ave	Ann Arbor, MI 48103
612 Barber Ave	612 Barber Ave	Ann Arbor, MI 48103
613 Barber Ave	613 Barber Ave	Ann Arbor, MI 48103
615 Barber Ave	1156 Ravenwood	Ann Arbor, MI 48103
615 Barber Ave	615 Barber Ave	Ann Arbor, MI 48103
616 Barber Ave	616 Barber Ave	Ann Arbor, MI 48103
619 Barber Ave	619 Barber Ave	Ann Arbor, MI 48103
625 Barber Ave	625 Barber Ave	Ann Arbor, MI 48103
626 Barber Ave	626 Barber Ave	Ann Arbor, MI 48103
630 Barber Ave	630 Barber Ave	Ann Arbor, MI 48103
633 Barber Ave	633 Barber Ave	Ann Arbor, MI 48103
639 Barber Ave	639 Barber Ave	Ann Arbor, MI 48103
640 Barber Ave	640 Barber Ave	Ann Arbor, MI 48103
646 Barber Ave	18418 Dorset St	Southfield, MI 48075
646 Barber Ave	646 Barber Ave	Ann Arbor, MI 48103
647 Barber Ave	647 Barber Ave	Ann Arbor, MI 48103
655 Barber Ave	655 Barber Ave	Ann Arbor, MI 48103
656 Barber Ave	656 Barber Ave	Ann Arbor, MI 48103
662 Barber Ave	662 Barber Ave	Ann Arbor, MI 48103
665 Barber Ave	665 Barber Ave	Ann Arbor, MI 48103
670 Barber Ave	670 Barber Ave	Ann Arbor, MI 48103
682 Barber Ave	5248 S. Cobble Creek Rd, Apt 11C	Salt Lake City, UT 84117
682 Barber Ave	682 Barber Ave	Ann Arbor, MI 48103
685 Barber Ave	685 Barber Ave	Ann Arbor, MI 48103
520 Center Dr	520 Center Dr	Ann Arbor, MI 48103
531 Center Dr	531 Center Dr	Ann Arbor, MI 48103
532 Center Dr	3396 Paddington Dr.	Troy, MI 48084
532 Center Dr	532 Center Dr	Ann Arbor, MI 48103
542 Center Dr	542 Center Dr	Ann Arbor, MI 48103
542 Center Dr	3707 Ryan	Dexter, MI 48130
543 Center Dr	543 Center Dr	Ann Arbor, MI 48103
552 Center Dr	552 Center Dr	Ann Arbor, MI 48103
555 Center Dr	555 Center Dr	Ann Arbor, MI 48103
562 Center Dr	562 Center Dr	Ann Arbor, MI 48103
563 Center Dr	563 Center Dr	Ann Arbor, MI 48103
571 Center Dr	571 Center Dr	Ann Arbor, MI 48103
579 Center Dr	579 Center Dr	Ann Arbor, MI 48103
580 Center Dr	580 Center Dr	Ann Arbor, MI 48103
587 Center Dr	587 Center Dr	Ann Arbor, MI 48103
588 Center Dr	588 Center Dr	Ann Arbor, MI 48103
400 Clarendon Dr	400 Clarendon Dr	Ann Arbor, MI 48103
445 Clarendon Dr	445 Clarendon Dr	Ann Arbor, MI 48103
455 Clarendon Dr	455 Clarendon Dr	Ann Arbor, MI 48103
460 Clarendon Dr	460 Clarendon Dr	Ann Arbor, MI 48103
550 Dellwood Dr	550 Dellwood Dr	Ann Arbor, MI 48103
580 Dellwood Dr	580 Dellwood Dr	Ann Arbor, MI 48103
583 Dellwood Dr	One South Wacker Drive, Ste 1300	Chicago, IL 60606
583 Dellwood Dr	583 Dellwood Dr	Ann Arbor, MI 48103

**- Cover Letter, Survey, PZ Order, Map, SASE Mailed
7/8/11**

Re: Address	Mailing Address Line 2	Mailing Address Line 3
588 Dellwood Dr	588 Dellwood Dr	Ann Arbor, MI 48103
593 Dellwood Dr	593 Dellwood Dr	Ann Arbor, MI 48103
605 Dellwood Dr	605 Dellwood Dr	Ann Arbor, MI 48103
621 Dellwood Dr	621 Dellwood Dr	Ann Arbor, MI 48103
622 Dellwood Dr	622 Dellwood Dr	Ann Arbor, MI 48103
623 Dellwood Dr	623 Dellwood Dr	Ann Arbor, MI 48103
626 Dellwood Dr	626 Dellwood Dr	Ann Arbor, MI 48103
629 Dellwood Dr	629 Dellwood Dr	Ann Arbor, MI 48103
630 Dellwood Dr	630 Dellwood Dr	Ann Arbor, MI 48103
635 Dellwood Dr	635 Dellwood Dr	Ann Arbor, MI 48103
636 Dellwood Dr	636 Dellwood Dr	Ann Arbor, MI 48103
640 Dellwood Dr	640 Dellwood Dr	Ann Arbor, MI 48103
641 Dellwood Dr	641 Dellwood Dr	Ann Arbor, MI 48103
646 Dellwood Dr	646 Dellwood Dr	Ann Arbor, MI 48103
647 Dellwood Dr	647 Dellwood Dr	Ann Arbor, MI 48103
656 Dellwood Dr	656 Dellwood Dr	Ann Arbor, MI 48103
667 Dellwood Dr	667 Dellwood Dr	Ann Arbor, MI 48103
670 Dellwood Dr	670 Dellwood Dr	Ann Arbor, MI 48103
677 Dellwood Dr	677 Dellwood Dr	Ann Arbor, MI 48103
678 Dellwood Dr	678 Dellwood Dr	Ann Arbor, MI 48103
690 Dellwood Dr	690 Dellwood Dr	Ann Arbor, MI 48103
704 Dellwood Dr	704 Dellwood Dr	Ann Arbor, MI 48103
705 Dellwood Dr	705 Dellwood Dr	Ann Arbor, MI 48103
714 Dellwood Dr	714 Dellwood Dr	Ann Arbor, MI 48103
715 Dellwood Dr	715 Dellwood Dr	Ann Arbor, MI 48103
725 Dellwood Dr	725 Dellwood Dr	Ann Arbor, MI 48103
730 Dellwood Dr	730 Dellwood Dr	Ann Arbor, MI 48103
735 Dellwood Dr	735 Dellwood Dr	Ann Arbor, MI 48103
744 Dellwood Dr	1134 Beck Ave	Ann Arbor, MI 48103
744 Dellwood Dr	744 Dellwood Dr	Ann Arbor, MI 48103
745 Dellwood Dr	745 Dellwood Dr	Ann Arbor, MI 48103
754 Dellwood Dr	754 Dellwood Dr	Ann Arbor, MI 48103
755 Dellwood Dr	755 Dellwood Dr	Ann Arbor, MI 48103
764 Dellwood Dr	764 Dellwood Dr	Ann Arbor, MI 48103
765 Dellwood Dr	765 Dellwood Dr	Ann Arbor, MI 48103
774 Dellwood Dr	774 Dellwood Dr	Ann Arbor, MI 48103
775 Dellwood Dr	775 Dellwood Dr	Ann Arbor, MI 48103
785 Dellwood Dr	785 Dellwood Dr	Ann Arbor, MI 48103
2588 Dexter Road	2588 Dexter Road	Ann Arbor, MI 48103
2601 Dexter Road	2601 Dexter Road	Ann Arbor, MI 48103
2612 Dexter Road	16201 N M-36	Gregory, MI 48137
2612 Dexter Road	2612 Dexter Road	Ann Arbor, MI 48103
2623 Dexter Road	2623 Dexter Road	Ann Arbor, MI 48103
2638 Dexter Road	2638 Dexter Road	Ann Arbor, MI 48103
2658 Dexter Road	2658 Dexter Road	Ann Arbor, MI 48103
2673 Dexter Road	2673 Dexter Road	Ann Arbor, MI 48103
2683 Dexter Road	2683 Dexter Road	Ann Arbor, MI 48103
2700 Dexter Road	2700 Dexter Road	Ann Arbor, MI 48103
2701 Dexter Road	2701 Dexter Road	Ann Arbor, MI 48103
2735 Dexter Road	2735 Dexter Road	Ann Arbor, MI 48103
2775 Dexter Road	2775 Dexter Road	Ann Arbor, MI 48103
2800 Dexter Road	2800 Dexter Road	Ann Arbor, MI 48103
2818 Dexter Road	2818 Dexter Road	Ann Arbor, MI 48103

**- Cover Letter, Survey, PZ Order, Map, SASE Mailed
7/8/11**

Re: Address	Mailing Address Line 2	Mailing Address Line 3
2821 Dexter Road	2821 Dexter Road	Ann Arbor, MI 48103
2828 Dexter Road	2828 Dexter Road	Ann Arbor, MI 48103
2840 Dexter Road	2840 Dexter Road	Ann Arbor, MI 48103
2855 Dexter Road	2855 Dexter Road	Ann Arbor, MI 48103
2880 Dexter Road	2880 Dexter Road	Ann Arbor, MI 48103
2920 Dexter Road	2920 Dexter Road	Ann Arbor, MI 48103
2921 Dexter Road	2921 Dexter Road	Ann Arbor, MI 48103
2961 Dexter Road	2961 Dexter Road	Ann Arbor, MI 48103
3010 Dexter Road	3010 Dexter Road	Ann Arbor, MI 48103
3021 Dexter Road	3021 Dexter Road	Ann Arbor, MI 48103
3024 Dexter Road	3024 Dexter Road	Ann Arbor, MI 48103
3041 Dexter Road	3041 Dexter Road	Ann Arbor, MI 48103
3060 Dexter Road	3060 Dexter Road	Ann Arbor, MI 48103
3061 Dexter Road	3061 Dexter Road	Ann Arbor, MI 48103
3064 Dexter Road	3064 Dexter Road	Ann Arbor, MI 48103
3081 Dexter Road	3081 Dexter Road	Ann Arbor, MI 48103
3110 Dexter Road	3110 Dexter Road	Ann Arbor, MI 48103
3124 Dexter Road	3124 Dexter Road	Ann Arbor, MI 48103
3144 Dexter Road	3144 Dexter Road	Ann Arbor, MI 48103
3151 Dexter Road	3151 Dexter Road	Ann Arbor, MI 48103
3154 Dexter Road	3154 Dexter Road	Ann Arbor, MI 48103
3204 Dexter Road	3204 Dexter Road	Ann Arbor, MI 48103
3209 Dexter Road	3209 Dexter Road	Ann Arbor, MI 48103
3213 Dexter Road	3213 Dexter Road	Ann Arbor, MI 48103
3224 Dexter Road	3224 Dexter Road	Ann Arbor, MI 48103
3230 Dexter Road	430 Rose Dr.	Ann Arbor, MI 48103
3230 Dexter Road	3230 Dexter Road	Ann Arbor, MI 48103
2818 Dexter Road	2818 Dexter Road	Ann Arbor, MI 48103
3281 Dexter Road	3281 Dexter Road	Ann Arbor, MI 48103
3284 Dexter Road	3284 Dexter Road	Ann Arbor, MI 48103
405 Evergreen Dr	405 Evergreen Dr	Ann Arbor, MI 48103
424 Evergreen Dr	424 Evergreen Dr	Ann Arbor, MI 48103
425 Evergreen Dr	425 Evergreen Dr	Ann Arbor, MI 48103
434 Evergreen Dr	434 Evergreen Dr	Ann Arbor, MI 48103
435 Evergreen Dr	751 Lakeview Ave	Ann Arbor, MI 48103
435 Evergreen Dr	435 Evergreen Dr	Ann Arbor, MI 48103
444 Evergreen Dr	444 Evergreen Dr	Ann Arbor, MI 48103
445 Evergreen Dr	445 Evergreen Dr	Ann Arbor, MI 48103
454 Evergreen Dr	454 Evergreen Dr	Ann Arbor, MI 48103
455 Evergreen Dr	455 Evergreen Dr	Ann Arbor, MI 48103
465 Evergreen Dr	465 Evergreen Dr	Ann Arbor, MI 48103
466 Evergreen Dr	466 Evergreen Dr	Ann Arbor, MI 48103
475 Evergreen Dr	300 W Ottawa St	Lansing, MI 48933-1577
475 Evergreen Dr	475 Evergreen Dr	Ann Arbor, MI 48103
300 Glenwood St	704 Spring St	Ann Arbor, MI 48103
300 Glenwood St	300 Glenwood St	Ann Arbor, MI 48103
306 Glenwood St	306 Glenwood St	Ann Arbor, MI 48103
308 Glenwood St	308 Glenwood St	Ann Arbor, MI 48103
345 Glenwood St	345 Glenwood St	Ann Arbor, MI 48103
360 Glenwood St	360 Glenwood St	Ann Arbor, MI 48103
370 Glenwood St	14221 Dallas Parkway, Ste 1000	Dallas, TX 75254

**- Cover Letter, Survey, PZ Order, Map, SASE Mailed
7/8/11**

Re: Address	Mailing Address Line 2	Mailing Address Line 3
370 Glenwood St	370 Glenwood St	Ann Arbor, MI 48103
391 Glenwood St	391 Glenwood St	Ann Arbor, MI 48103
402 Glenwood St	402 Glenwood St	Ann Arbor, MI 48103
414 Glenwood St	414 Glenwood St	Ann Arbor, MI 48103
2585 Hollywood Dr	2585 Hollywood Dr	Ann Arbor, MI 48103
2605 Hollywood Dr	2605 Hollywood Dr	Ann Arbor, MI 48103
2625 Hollywood Dr	2625 Hollywood Dr	Ann Arbor, MI 48103
2637 Hollywood Dr	2637 Hollywood Dr	Ann Arbor, MI 48103
2651 Hollywood Dr	2651 Hollywood Dr	Ann Arbor, MI 48103
2691 Hollywood Dr	2691 Hollywood Dr	Ann Arbor, MI 48103
2730 Hollywood Dr	2730 Hollywood Dr	Ann Arbor, MI 48103
2800 Hollywood Dr	2800 Hollywood Dr	Ann Arbor, MI 48103
2819 Hollywood Dr	3205 Hayes Ct	Ann Arbor, MI 48104
2819 Hollywood Dr	2819 Hollywood Dr	Ann Arbor, MI 48103
2820 Hollywood Dr	2820 Hollywood Dr	Ann Arbor, MI 48103
608 Ironwood Dr	608 Ironwood Dr	Ann Arbor, MI 48103
618 Ironwood Dr	618 Ironwood Dr	Ann Arbor, MI 48103
627 Ironwood Dr	627 Ironwood Dr	Ann Arbor, MI 48103
628 Ironwood Dr	628 Ironwood Dr	Ann Arbor, MI 48103
637 Ironwood Dr	637 Ironwood Dr	Ann Arbor, MI 48103
638 Ironwood Dr	638 Ironwood Dr	Ann Arbor, MI 48103
637 Ironwood Dr	637 Ironwood Dr	Ann Arbor, MI 48103
647 Ironwood Dr	647 Ironwood Dr	Ann Arbor, MI 48103
648 Ironwood Dr	648 Ironwood Dr	Ann Arbor, MI 48103
655 Ironwood Dr	655 Ironwood Dr	Ann Arbor, MI 48103
656 Ironwood Dr	656 Ironwood Dr	Ann Arbor, MI 48103
665 Ironwood Dr	665 Ironwood Dr	Ann Arbor, MI 48103
666 Ironwood Dr	666 Ironwood Dr	Ann Arbor, MI 48103
675 Ironwood Dr	675 Ironwood Dr	Ann Arbor, MI 48103
676 Ironwood Dr	676 Ironwood Dr	Ann Arbor, MI 48103
685 Ironwood Dr	4925 Packard Rd	Ann Arbor, MI 48108
685 Ironwood Dr	685 Ironwood Dr	Ann Arbor, MI 48103
686 Ironwood Dr	686 Ironwood Dr	Ann Arbor, MI 48103
530 Kuehnle Ave	530 Kuehnle Ave	Ann Arbor, MI 48103
533 Kuehnle Ave	533 Kuehnle Ave	Ann Arbor, MI 48103
550 Kuehnle Ave	550 Kuehnle Ave	Ann Arbor, MI 48103
550 Kuehnle Ave	550 Kuehnle Ave	Ann Arbor, MI 48103
560 Kuehnle Ave	560 Kuehnle Ave	Ann Arbor, MI 48103
561 Kuehnle Ave	561 Kuehnle Ave	Ann Arbor, MI 48103
565 Kuehnle Ave	565 Kuehnle Ave	Ann Arbor, MI 48103
566 Kuehnle Ave	566 Kuehnle Ave	Ann Arbor, MI 48103
587 Kuehnle Ave	587 Kuehnle Ave	Ann Arbor, MI 48103
596 Kuehnle Ave	3893 W Liberty	Ann Arbor, MI 48103
596 Kuehnle Ave	596 Kuehnle Ave	Ann Arbor, MI 48103
597 Kuehnle Ave	597 Kuehnle Ave	Ann Arbor, MI 48103
612 Kuehnle Ave	1276 Kuehnle Ave	Ann Arbor, MI 48103
612 Kuehnle Ave	612 Kuehnle Ave	Ann Arbor, MI 48103
617 Kuehnle Ave	1719 Springmill Lane	Ann Arbor, MI 48108
617 Kuehnle Ave	617 Kuehnle Ave	Ann Arbor, MI 48103
630 Kuehnle Ave	630 Kuehnle Ave	Ann Arbor, MI 48103
680 Kuehnle Ave	680 Kuehnle Ave	Ann Arbor, MI 48103
701 Kuehnle Ave	701 Kuehnle Ave	Ann Arbor, MI 48103
713 Kuehnle Ave	301 Poyyer Ave #1	Ann Arbor, MI 48103

**- Cover Letter, Survey, PZ Order, Map, SASE Mailed
7/8/11**

Re: Address	Mailing Address Line 2	Mailing Address Line 3
713 Kuehnle Ave	713 Kuehnle Ave	Ann Arbor, MI 48103
742 Kuehnle Ave	742 Kuehnle Ave	Ann Arbor, MI 48103
743 Kuehnle Ave	743 Kuehnle Ave	Ann Arbor, MI 48103
755 Kuehnle Ave	755 Kuehnle Ave	Ann Arbor, MI 48103
765 Kuehnle Ave	765 Kuehnle Ave	Ann Arbor, MI 48103
766 Kuehnle Ave	766 Kuehnle Ave	Ann Arbor, MI 48103
772 Kuehnle Ave	772 Kuehnle Ave	Ann Arbor, MI 48103
779 Kuehnle Ave	779 Kuehnle Ave	Ann Arbor, MI 48103
780 Kuehnle Ave	780 Kuehnle Ave	Ann Arbor, MI 48103
784 Kuehnle Ave	784 Kuehnle Ave	Ann Arbor, MI 48103
785 Kuehnle Ave	785 Kuehnle Ave	Ann Arbor, MI 48103
721 N Maple	PO Box 8647	Ann Arbor, MI 48107
743 N Maple	PO Box 8647	Ann Arbor, MI 48107
785 N Maple	7560 Secretariat	Saline, MI 48176
785 N Maple	785 N Maple	Ann Arbor, MI 48103
795 N Maple	7560 Secretariat	Saline, MI 48176
795 N Maple	795 N Maple	Ann Arbor, MI 48103
825 N Maple	4259 Dexter	Ann Arbor, MI 48103
825 N Maple	825 N Maple	Ann Arbor, MI 48103
871 N Maple	871 N Maple	Ann Arbor, MI 48103
995 N Maple	2761 S. State	Ann Arbor, MI 48104
1111 N Maple	1111 N Maple	Ann Arbor, MI 48103
444 Parkwood St	444 Parkwood St	Ann Arbor, MI 48103
342 Pinewood St	342 Pinewood St	Ann Arbor, MI 48103
347 Pinewood St	347 Pinewood St	Ann Arbor, MI 48103
376 Pinewood St	2893 Ticknor Ct	Ann Arbor, MI 48104
376 Pinewood St	376 Pinewood St	Ann Arbor, MI 48103
495 Pinewood St	495 Pinewood St	Ann Arbor, MI 48103
3225 Ravenwood Ave	3225 Ravenwood Ave	Ann Arbor, MI 48103
3261 Ravenwood Ave	3261 Ravenwood Ave	Ann Arbor, MI 48103
420 Rose Dr	420 Rose Dr	Ann Arbor, MI 48103
426 Rose Dr	426 Rose Dr	Ann Arbor, MI 48103
460 Rose Dr	460 Rose Dr	Ann Arbor, MI 48103
490 Rose Dr	490 Rose Dr	Ann Arbor, MI 48103
2725 Sequoia Pkwy	2725 Sequoia Pkwy	Ann Arbor, MI 48103
2735 Sequoia Pkwy	2735 Sequoia Pkwy	Ann Arbor, MI 48103
2805 Sequoia Pkwy	2805 Sequoia Pkwy	Ann Arbor, MI 48103
2815 Sequoia Pkwy	2815 Sequoia Pkwy	Ann Arbor, MI 48103
2825 Sequoia Pkwy	4285 Upper Glade Ct	Ann Arbor, MI 48103
2825 Sequoia Pkwy	2825 Sequoia Pkwy	Ann Arbor, MI 48103
2835 Sequoia Pkwy	2835 Sequoia Pkwy	Ann Arbor, MI 48103
2901 Sequoia Pkwy	2901 Sequoia Pkwy	Ann Arbor, MI 48103
2606 Valley Dr	2606 Valley Dr	Ann Arbor, MI 48103
2616 Valley Dr	2616 Valley Dr	Ann Arbor, MI 48103
2630 Valley Dr	467 Devils Lane	Naples, FL 34103
2630 Valley Dr	2630 Valley Dr	Ann Arbor, MI 48103
2640 Valley Dr	14221 Dalls Parkway, Ste 1000	Dallas, TX 75254
Valley Dr 2740	2740 Valley Dr	Ann Arbor, MI 48103
2750 Valley Dr	1650 W Big Beaver Rd	Troy, MI 48084
2750 Valley Dr	2750 Valley Dr	Ann Arbor, MI 48103

PALL Pall Corporation

600 South Wagner Road
Ann Arbor, MI 48103-9019 USA



USA FIRST-CLASS FOREVER

Pall Corporation
Attn: Farsad Fotouhi
600 S. Wagner Road
Ann Arbor, MI 48103

Filtration. Separation. Solution.SM

PALL Pall Corporation

600 South Wagner Road
Ann Arbor, MI 48103-9019

Mailing Address Here

Filtration. Separation. Solution.SM

July 8, 2011

Name
Mailing Address
Ann Arbor, MI 48103

Re: Property at: Address of Property

Dear Owner:

I am writing to you on behalf of Pall Life Sciences (formerly known as Gelman Sciences) ("PLS") to ask you to complete the enclosed survey. PLS is seeking this information in connection with changes to its groundwater cleanup program that have been approved by both the Michigan Department of Environmental Quality ("MDEQ") and the Washtenaw County Circuit Court (Court) Judge who is supervising PLS' cleanup efforts.

As you may know, in May, 2005, the Court issued an order establishing an area within the City of Ann Arbor where it is illegal to withdraw or otherwise use the groundwater. Recently, the Court approved an expansion of the "Prohibition Zone" as part of agreed upon modifications to the cleanup program. Details on these changes are available on the web site maintained by the MDEQ for the Gelman Sciences site (www.michigan.gov/deqrrd, scroll down to link to Gelman web site).

A copy of the Prohibition Zone order is attached, which now also applies to the expanded Prohibition Zone. Also attached is a separate figure showing the area covered by the expanded Prohibition Zone. Your property is located within the expanded Prohibition Zone. Like virtually all of the properties in the Prohibition Zone, your property is supplied with City water drawn from a safe source. Because the Prohibition Zone is broad enough to include a significant buffer zone, the fact that your property is located within this zone does not mean that there is contaminated groundwater under your property. It does mean that use of wells on your property to withdraw groundwater is, with limited exceptions, prohibited.

The MDEQ has asked PLS to survey certain properties within the zone established by the Court's orders to identify the existence of any wells that could be used to withdraw water, whether they are in operation or not. This includes not only out-of-use drinking water wells, but also wells used for irrigation, heat pumps or other purposes. The properties like yours now being surveyed are those that might have been serviced by a private well before being connected to the City water supply. If you are unsure about whether such a well is present on your property, PLS requests the opportunity to inspect your yard to determine if an old well might still exist. It is important that any wells within the expanded Prohibition Zone be identified and properly addressed to prevent future use.

Please return the attached survey form to PLS in the self-addressed envelope provided. If you have any questions, please feel free to contact either PLS or the MDEQ:

Sybil Kolon
MDEQ
301 E. Louis Glick Hwy.
Jackson, MI 49201
517-780-7937
kolons@michigan.gov

Farsad Fotouhi
Pall Life Sciences
600 S. Wagner Road
Ann Arbor, MI 48106

Thank you for your assistance with this important aspect of the cleanup project.

Farsad Fotouhi
VP Corporate Environmental Engineering

cc: resident if not the owner