



fitch
fishbeck, thompson, carr & huber
engineers • scientists • architects

Grand Rapids (616) 575-3824
Lansing (517) 627-1141
Kalamazoo (616) 349-3717
Farmington Hills (248) 324-2090

BOREHOLE LOG

BORING/WELL ID: TW-14

TOTAL DEPTH (ft.): 212'

PROJECT: Pall Life Sciences
SITE LOCATION: Ann Arbor, Michigan
PROJECT NO.: F96502
PROJECT MANAGER: James W. Brode, Jr., C.P.G.
LOGGED BY: Todd Campbell

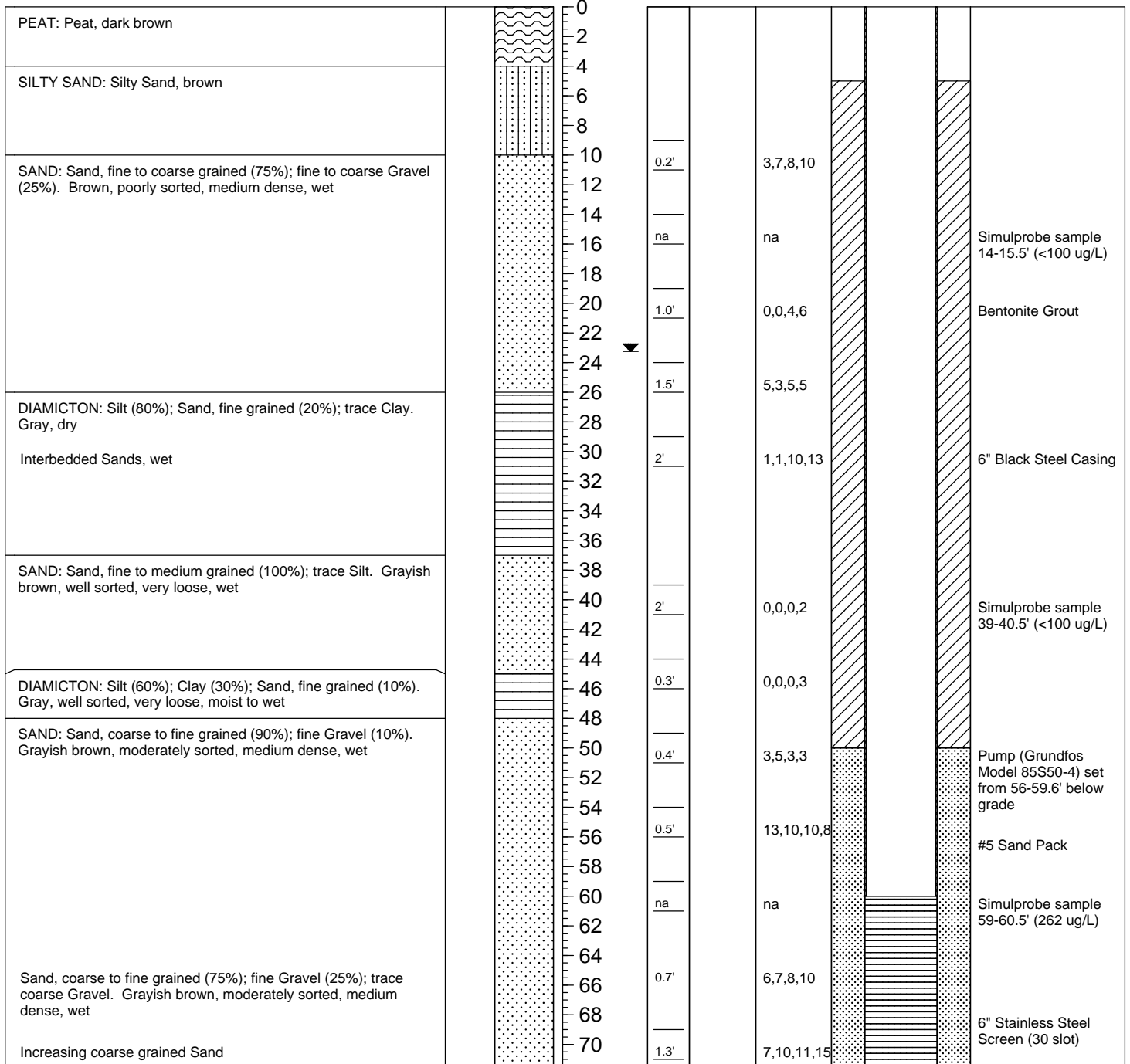
START DATE: 2/27/02
END DATE: 3/15/02
TOC ELEV.:
GROUND ELEV.: Approx. 905'
STATIC WATER LVL.: 23'

DRILLING CO.: Stearns Drilling
DRILLER: John, Denny, Duane, Ryan
RIG TYPE: CME 1050
METHOD OF DRILLING: Hollow Stem Auger
SAMPLING METHODS: Split Spoon, Simulprobe

NOTES: Field GPS Coordinates (Lat. N42.27890, Long. W083.80546)
Plugged original hole, moved north 5' to drill/install well

▼ Static Water Level Page 1 of 3

DESCRIPTION	PID ppm	GRAPHIC LOG	DEPTH (ft. bgl)	Static Water Level	Sample/Recovery	Sample ID	Blow Counts	WELL CONSTRUCTION DETAIL
-------------	---------	-------------	-----------------	--------------------	-----------------	-----------	-------------	--------------------------





BOREHOLE LOG

BORING/WELL ID: TW-14

TOTAL DEPTH (ft.): 212'

PROJECT: Pall Life Sciences
SITE LOCATION: Ann Arbor, Michigan
PROJECT NO.: F96502
PROJECT MANAGER: James W. Brode, Jr., C.P.G.
LOGGED BY: Todd Campbell

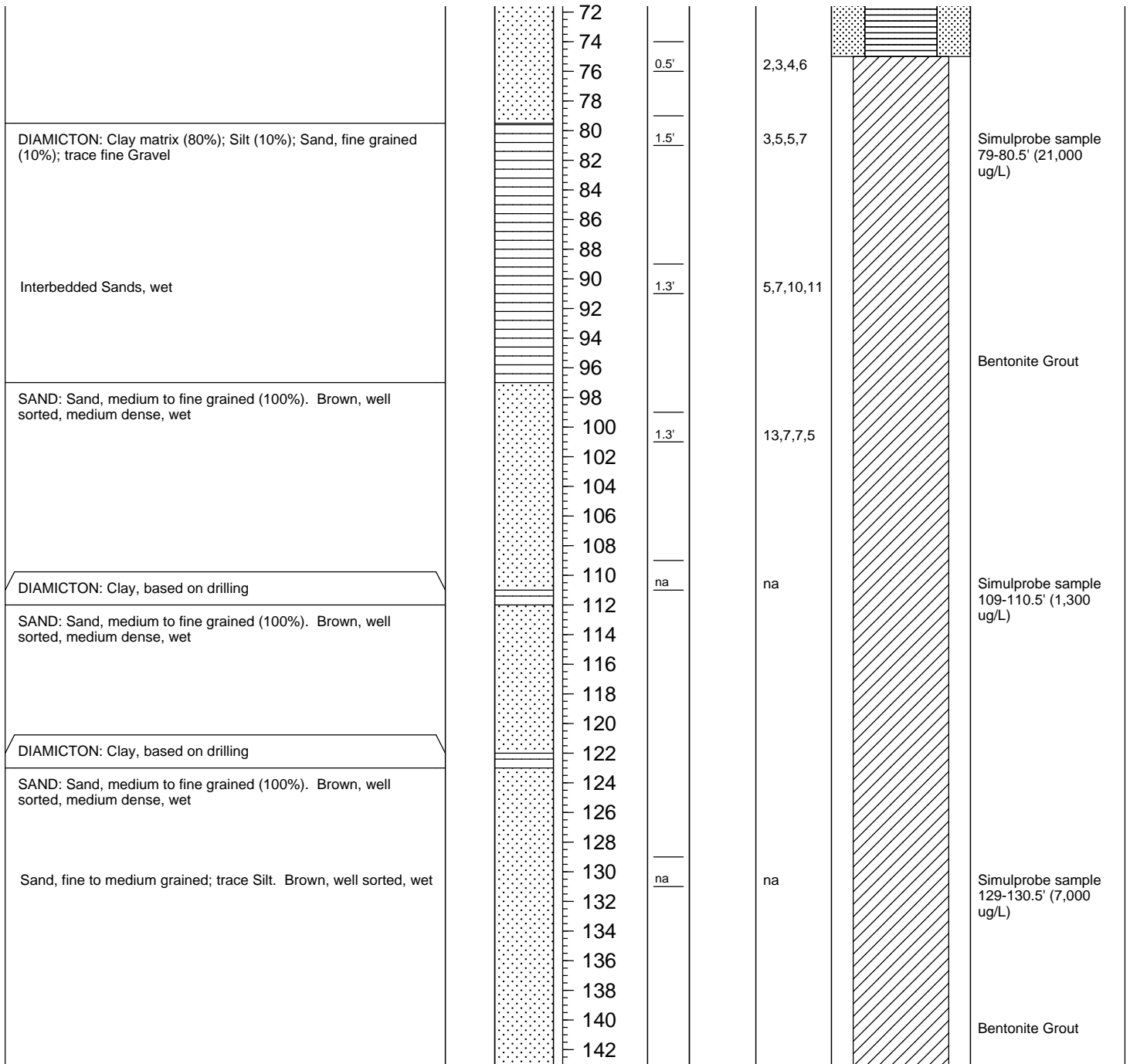
START DATE: 2/27/02
END DATE: 3/15/02
TOC ELEV.:
GROUND ELEV.: Approx. 905'
STATIC WATER LVL.: 23'

DRILLING CO.: Stearns Drilling
DRILLER: John, Denny, Duane, Ryan
RIG TYPE: CME 1050
METHOD OF DRILLING: Hollow Stem Auger
SAMPLING METHODS: Split Spoon, Simulprobe

NOTES: Field GPS Coordinates (Lat. N42.27890, Long. W083.80546)
Plugged original hole, moved north 5' to drill/install well

Static Water Level Page 2 of 3

DESCRIPTION	PID ppm	GRAPHIC LOG	DEPTH (ft. bgl)	Static Water Level	Sample/Recovery	Sample ID	Blow Counts	WELL CONSTRUCTION DETAIL
-------------	---------	-------------	-----------------	--------------------	-----------------	-----------	-------------	--------------------------





BOREHOLE LOG

BORING/WELL ID: TW-14

TOTAL DEPTH (ft.): 212'

PROJECT: Pall Life Sciences
SITE LOCATION: Ann Arbor, Michigan
PROJECT NO.: F96502
PROJECT MANAGER: James W. Brode, Jr., C.P.G.
LOGGED BY: Todd Campbell

START DATE: 2/27/02
END DATE: 3/15/02
TOC ELEV.:
GROUND ELEV.: Approx. 905'
STATIC WATER LVL.: 23'

DRILLING CO.: Stearns Drilling
DRILLER: John, Denny, Duane, Ryan
RIG TYPE: CME 1050
METHOD OF DRILLING: Hollow Stem Auger
SAMPLING METHODS: Split Spoon, Simulprobe

NOTES: Field GPS Coordinates (Lat. N42.27890, Long. W083.80546)
Plugged original hole, moved north 5' to drill/install well

Static Water Level Page 3 of 3

DESCRIPTION	PID ppm	GRAPHIC LOG	DEPTH (ft. bgl)	Static Water Level	Sample/ Recovery	Sample ID	Blow Counts	WELL CONSTRUCTION DETAIL

Cobbles/Gravel present			144					
			146					
			148					
			150		na		na	
			152					
			154					
			156					
			158					
			160					
			162					
			164					
			166					
			168					
			170					
	172							
SAND AND GRAVEL: Sand, coarse to fine grained (60%); Gravel, coarse to fine (40%). Gray, poorly sorted, very dense, wet			176	na		na		Added grout to augers to minimize heaving sands and gravels
			178					
			180		na		na	
			182					
			184					
			186					
SAND: Sand, medium to fine grained (100%). Grayish brown, well sorted with occasional cobbles, wet			188					
			190					
			192					
			194					
			196					
			198					
SHALE: Shale, gray, platy, dry			200	na		na		
			202					
	204							
	206							
	208							
	210		na		150 (2")			
	212							