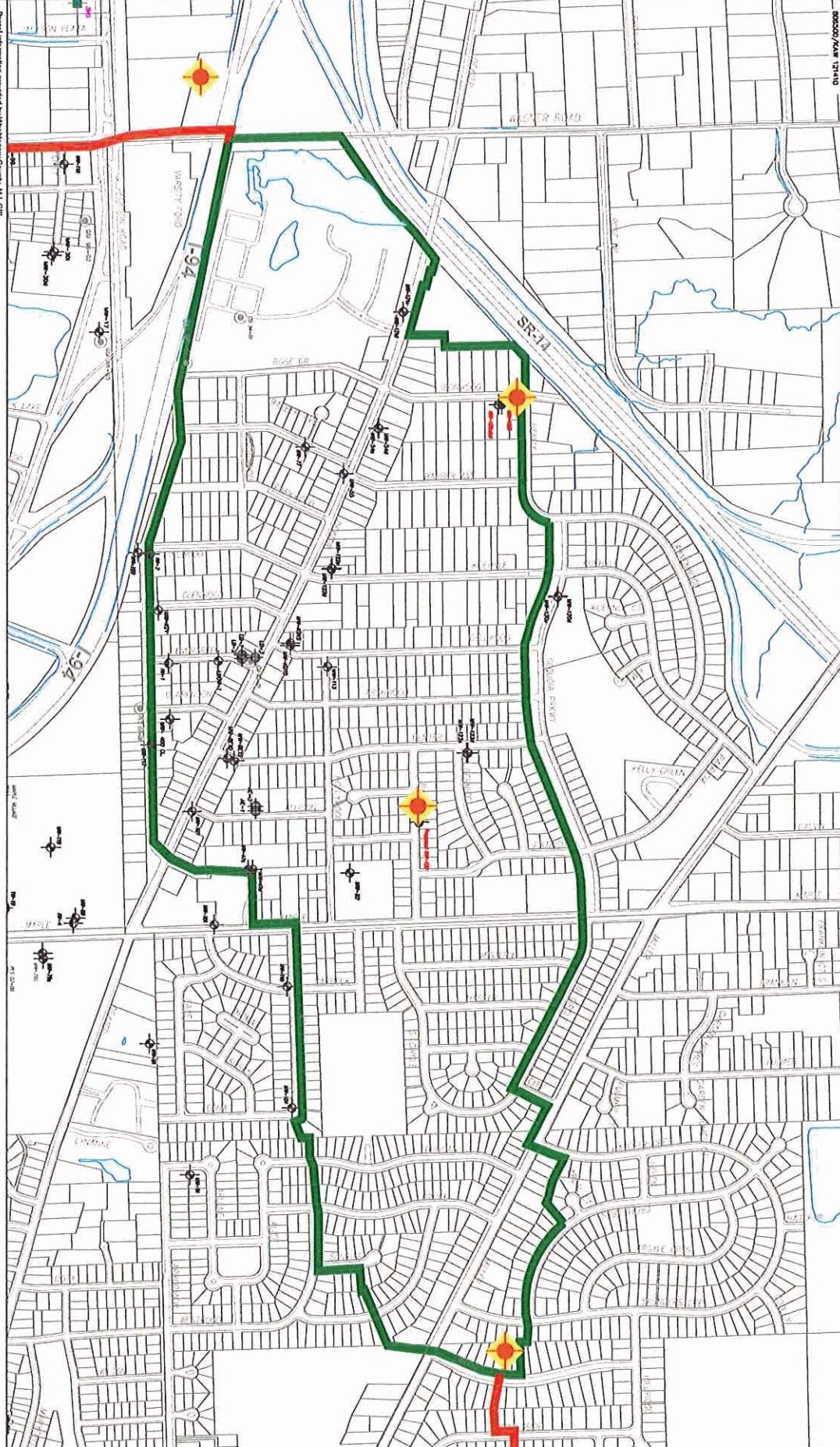


ATTORNEY GENERAL, et al v GELMAN SCIENCES, INC.

(Washtenaw County Circuit Court No. 88-34734-CE)

ATTACHMENT F



Parcel information provided by Washington County, Md. GIS



- PROPOSED MONITOR WELL
- MONITOR WELL
- PURGE WELL
- INJECTION WELL

LEGEND

- PROHIBITION ZONE BOUNDARY
- EXTENDED PROHIBITION ZONE BOUNDARY

PALL LIFE SCIENCES
WASHINGTON COUNTY, MD

PROPOSED WELL LOCATIONS
DECEMBER 2010

Hand drawn in
Microsoft Office
2010 or higher
Reserved.

FLEIS & VANDENBRINK ENGINEERING, INC.