



Notes from the desk of Amy Keranen

Spring
2017

Hi! This note is brought to you by the Remediation and Redevelopment Division (RRD) of the Michigan Department of Environmental Quality (DEQ) Calumet Field Office. Our division's goal is to keep you up to date on the RRD's environmental projects underway in the Keweenaw Peninsula. My name is Amy Keranen and I'm the DEQ project manager for the Abandoned Mining Wastes—Torch Lake project. I can be reached at the following phone number and addresses, and hope you'll keep in touch! DEQ Calumet Field Office (MSP Post), 55195 U.S. 41 North, Calumet, MI 49913; 906-337-0389; keranena@michigan.gov.

Amy

Abandoned Mining Wastes Project—Torch Lake

Open House on May 16, 2017 at Lake Linden-Hubbell School

The DEQ Abandoned Mining Wastes (AMW) project team will be available from **4:30-8 p.m. on Tuesday, May 16th** at the Lake Linden-Hubbell High School Auditorium to share our findings with the community. This team consists of staff involved in the planning, fieldwork, interim responses, and reporting for the project; the DEQ sampling crew who conducted investigative activities; and the On-Scene Coordinator from the Environmental Protection Agency (EPA) Emergency Response Branch (ERB) who is managing two projects in the Lake Linden area. We will have maps and photos on display to show you where we conducted our work, what we have found, and what we have planned.

It will be an informal open house that will provide you with the opportunity to drop in, meet the project team and to get any questions answered. We hope to see you there!

Inside this issue:

Open House & EPA referrals	1
Quincy Mining Company– Mason	2
2017 work planned	3-4

Referrals to EPA Emergency Response Branch Lake Linden Recreation Area Sediments

The DEQ continues to share project data with the Michigan Department of Health and Human Services (MDHHS). Evaluation of results of several key studies conducted at the Lake Linden Recreation Area (LLRA) between 2005 and 2015 concluded that contamination exceeding health based and ecological criteria extends outward from the area along the shore which was the focus of a 2007 emergency removal (pictured below) that took place. Based on these findings, in January 2017, the DEQ

requested EPA ERB assistance to address the contaminated sediments at the LLRA site. The EPA is currently evaluating the existing information to determine what next steps are necessary.



Referrals to EPA Emergency Response Branch, continued



Calumet Stampmill Asbestos

The EPA ERB from Grosse Ile, Michigan continues to work with Honeywell Specialty Materials and the Houghton County Historical Society to remove asbestos near the foundations at the Museum in Lake Linden. Work started in October 2016 and cleanup activities will be completed by this summer. Mr. Brian Kelly, who manages these projects for the EPA ERB, will be at the May 16th Open House.

Quincy Mining Company Mason (QMCM) Area Focus of 2017 Field Investigation

In 2016, the AMW project team started looking at the third and final stretch of the Torch Lake shoreline– the QMCM area in Mason. We reviewed existing data, completed preliminary reconnaissance activities, conducted a side scan sonar survey and recorded underwater video using a remotely operated vehicle .

Based on the comprehensive review, a sampling and analysis plan (SAP) has been developed to assist in the identification of historic areas of contamination or data gaps requiring further assessment. The SAP will be implemented during 2017 and depending on the findings, interim response actions may be undertaken to reduce the public's potential for exposure to mining era wastes.



The photo above and to the left are of the Quincy Reclamation Plant ruins in Mason.

2017 Remediation Projects

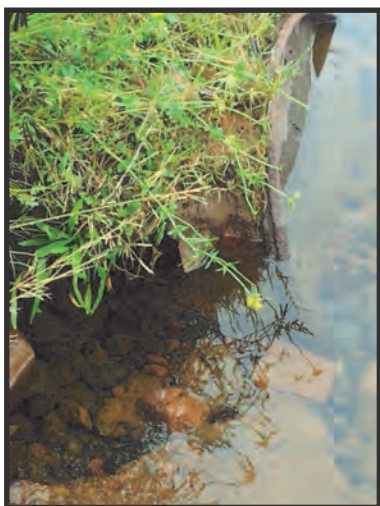
Investigations at the former Hubbell Smelter property and on the south side of the Tamarack Sands confirmed that debris has been buried under the soil cap constructed on the stampsands during the Torch Lake Superfund project.

Our investigations also show polychlorinated biphenyl (PCB)-contaminated soils are eroding into Torch Lake at the former Hubbell Coal Dock property.

To address the conditions in these three areas, interim response actions have been designed and will be implemented during 2017 following completion of our contracting and permitting activities.

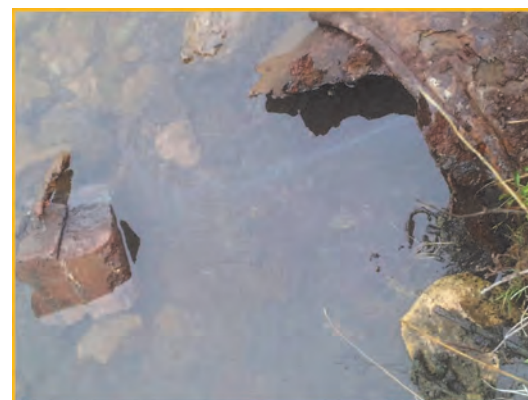
Tamarack Sands Waste Seeps

The photo on the right shows one of the seep areas where fluid wastes are coming up from likely buried drums that have decomposed beneath the Superfund soil cap in the Tamarack Sands. The seeping wastes that contain high concentrations of solvents and chemicals, not typically associated with mining related industry, will be removed and disposed. This area will be excavated for proper disposal in May/June 2017.



Hubbell Smelter Shoreline Drums

In these two photos (on the left and right), drums are visible sticking out into Torch Lake from beneath the Superfund soil cap near the former Hubbell Smelter property. The drums that contain PCBs and hazardous levels of lead will be removed and disposed. This removal is planned for May 2017.



Coal Dock PCB-Burn Area Remediation

The photos to the left and right depict surface water runoff and erosion of PCB-contaminated soils into Torch Lake from the Coal Dock PCB Burn Area. A project to address these concerns is being planned for this summer. We will be capping the area and improving the drainage from the site. Bids for this work will be submitted in early May 2017.



Work Planned for 2017

- Implement the QMCM SAP, prepare a Site Investigation Report, and undertake interim response actions if needed.
- Implement interim response actions in the Hubbell Processing Area (Shoreline Drums and Coal Dock PCB Burn Area) and Tamarack Sands.
- Prepare summary reports documenting all aspects of the 2016 and 2017 Emergency Response Actions.
- Honeywell Specialty Materials, under EPA ERB oversight, will continue to remove asbestos near the foundations at the Museum in Lake Linden.
- EPA ERB will proceed with removal assessment activities related to the Lake Linden Recreation Area.
- All project documents will be posted on the Abandoned Mining Wastes project website as they are finalized.

In the meantime, if you have questions, any information regarding historic waste issues we should be aware of, or concerns you wish to discuss, please contact me (keranena@michigan.gov).

I'll keep you informed as significant progress is made. Thank you for your interest, patience, and attention to this project. I hope to see you at the project open house on May 16th. *Amy*

Visit the project web page

http://www.michigan.gov/deq/0,4561,7-135-3311_4109_9846_76560--,00.html