

Western Lake Erie Nutrient Source Inventory



T O L E D O
LUCAS COUNTY
SUSTAINABILITY
COMMISSION





Background



Source: NOAA Centers for Coastal Ocean Science; data from the NASA MODIS sensor

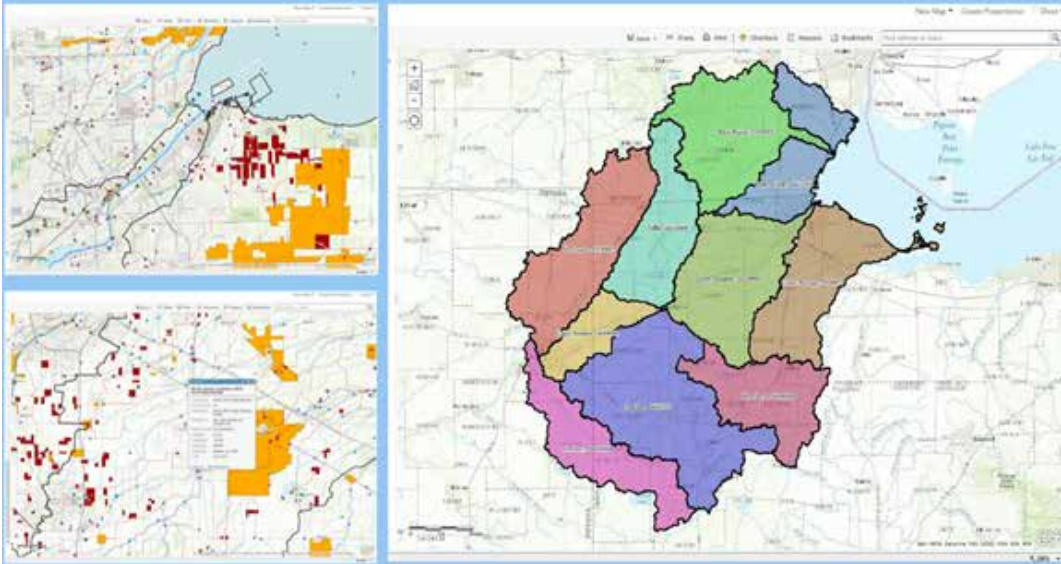




Western Lake Erie Nutrient Source Inventory

Western Lake Erie Nutrient Source Inventory

An interactive map of Nutrient Sources in the Western Lake Erie Basin



Sources

- Row Crop Agriculture
- Livestock Farms
- Sewage Overflows
- Unsewered Areas
- Wastewater Treatment Plants
- NPDES Permitted Industry



Overview

Interactive mapping tool of the WLEB that maps all of the the nutrient sources feeding the harmful algal bloom.



Data

Includes nutrient monitoring data from all of the sampling locations in the basin. Data in the tool dates back to the year 2000.

To learn more: www.lucascountygreen.com tlcscommission@gmail.com 419-213-4530

A partnership between The Toledo-Lucas County Sustainability Commission, The Lucas County Commissioners, The City of Toledo, and Clearwater 2.
Technical services provided by CIVIL 5 Environmental Consultants.

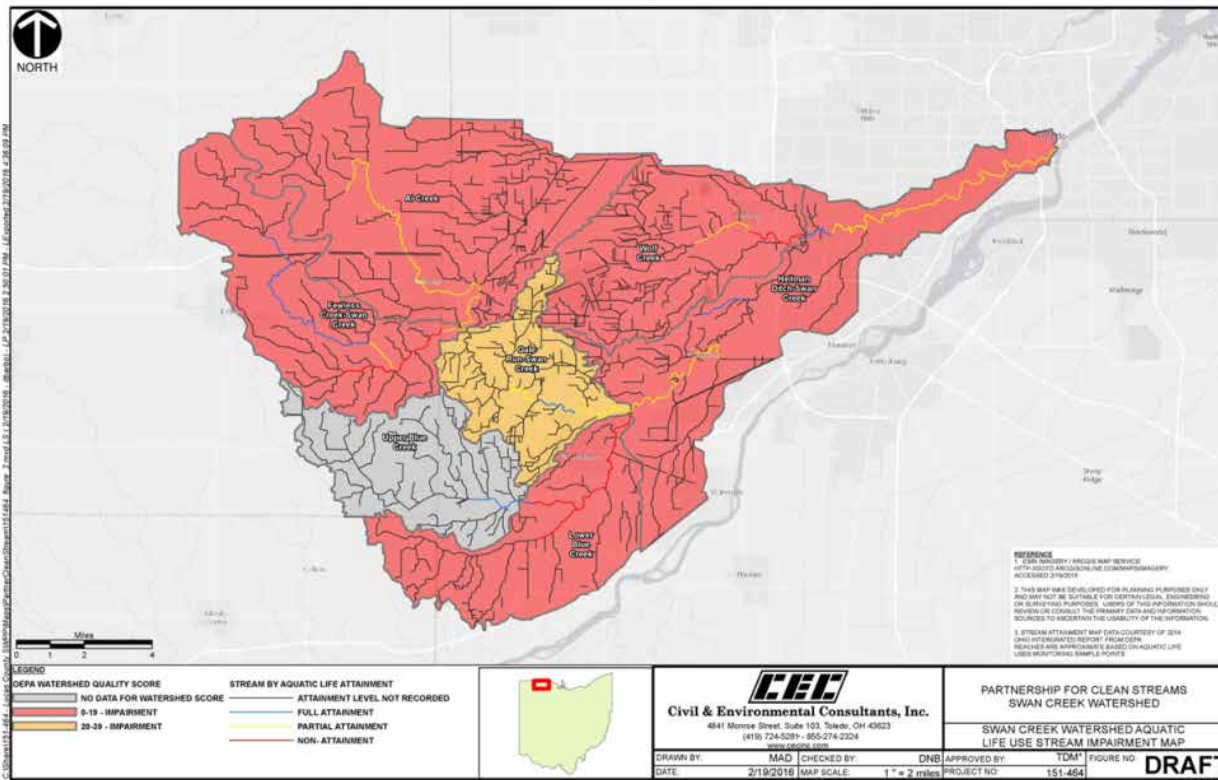
Nutrient Source Inventory





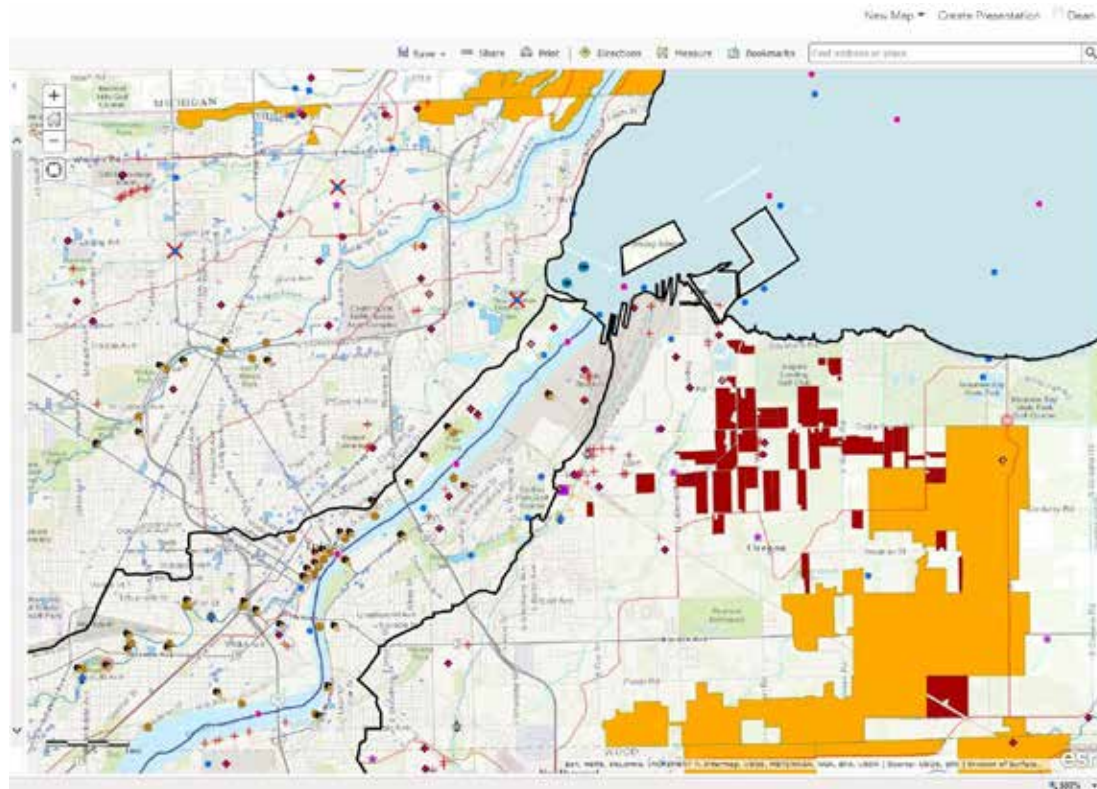
Application Examples

- 9-Element Watershed Planning
- K-12 lesson plans
- University Research
- Maps and data for advocacy



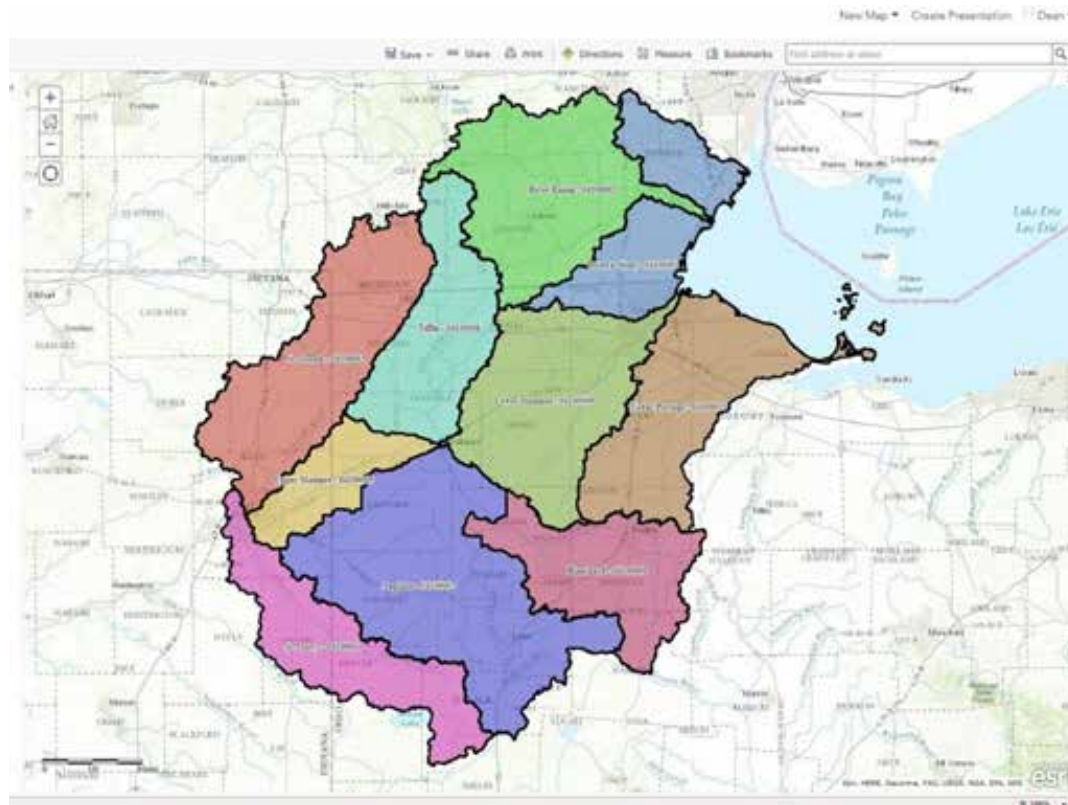
Challenges/ Data Gaps

- Manure land application information
- Information on CAFO's with less than 1,000 animals
- Water quality monitoring data in certain areas
- Updating



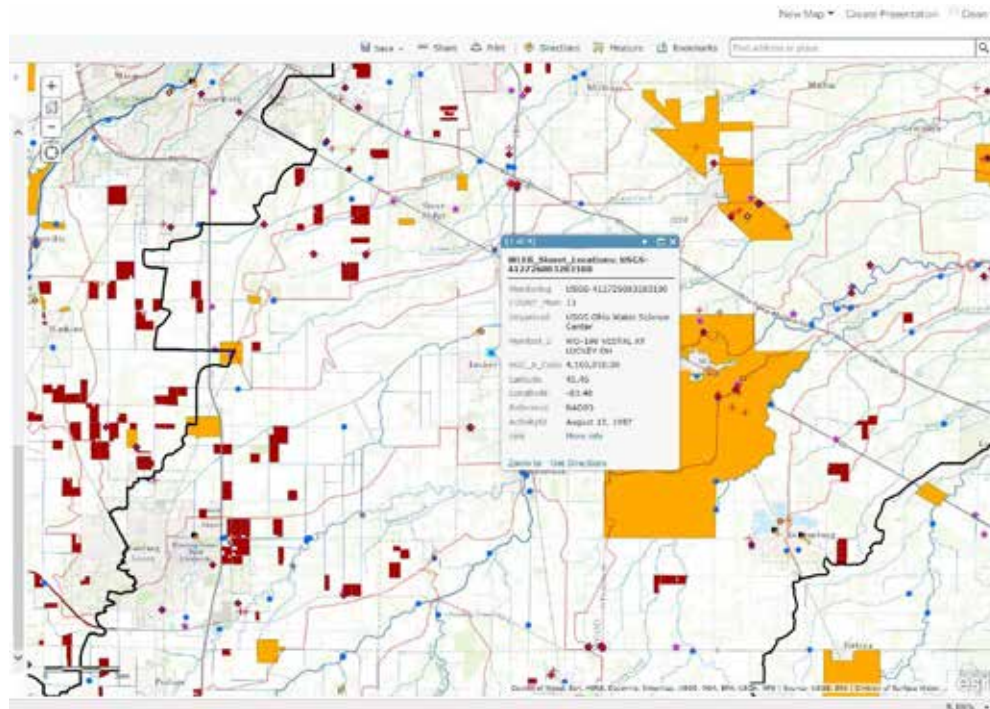
Opportunities

- Include and highlight existing water quality projects and BMP's
- Incorporate real time water quality monitoring data
- Incorporate a citizen science data layer



Next Steps

- Continue education and outreach
- Continue building partnerships
- Work to address data gaps identified in Phase 1 (CAFO data, manure, ect.)
- Modeling of specific areas



Contact Information

Melissa Greene Hopper

Sustainability Project Manager

Lucas County Commissioners Office

419-213-4530

mgreene@co.lucas.oh.us

Regina S. Collins

Stormwater Coordinator

City of Toledo Division of Environmental Services

419.936.3780

regina.collins@toledo.oh.gov



T O L E D O
L U C A S C O U N T Y
S U S T A I N A B I L I T Y
C O M M I S S I O N