

APPENDIX P
MIRROR LAKE INFORMATION

2006 Mirror Lake Lime
(Looking north from Mirror Lake towards Lime Pile)

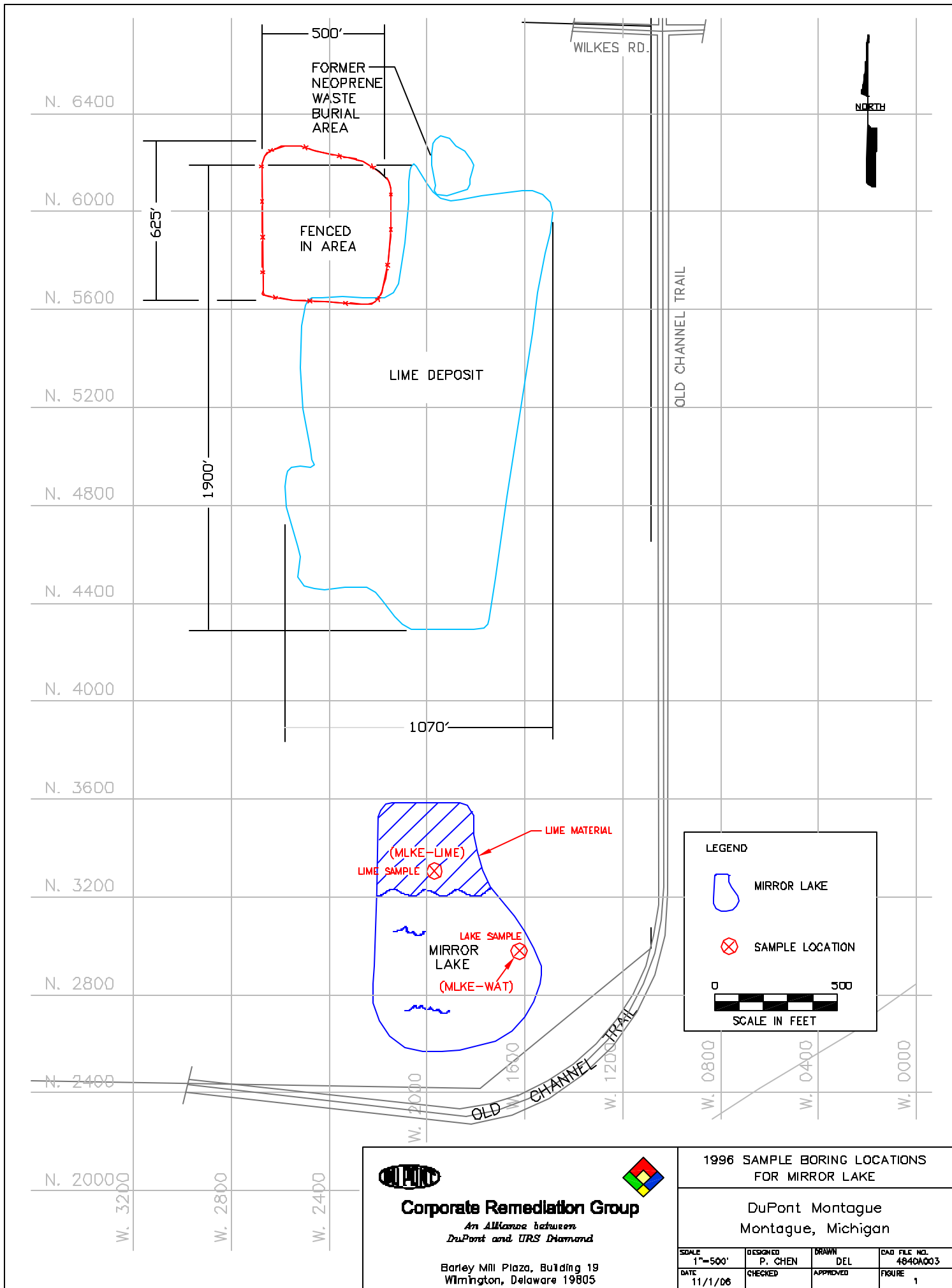


DuPont Montague Facility
Montague Michigan



2006 Mirror Lake Water (looking south)





Corporate Remediation Group
*An Alliance between
 DuPont and URS Diamond*

Barley Mill Plaza, Building 19
 Wilmington, Delaware 19805

1996 SAMPLE BORING LOCATIONS FOR MIRROR LAKE			
DuPont Montague Montague, Michigan			
SCALE 1"=500'	DESIGNED P. CHEN	DRAWN DEL	DWG FILE NO. 4840A003
DATE 11/1/06	CHECKED	APPROVED	FIGURE 1

DuPont In-House Review (DDR)

The DDR is an automated internal review process used by the ADQM group to determine if the data is usable. The data is run through this automated program where a series of checks are performed on the data. The data is evaluated against hold time criteria, checked for blank contamination, assessed against matrix spike(MS)/matrix spike duplicate (MSD) recoveries, assessed against relative percent differences (RPDs) between these samples, assessed against laboratory control sample(LCS)/control sample duplicate (LCSD) recoveries, assessed against RPDs between these samples, assessed against RPDs between laboratory replicates, and assessed against surrogate spike recoveries. The DDR applies the following data qualifiers to analysis results, as warranted:

Qualifier	Definition
B	Not detected substantially above the level reported in the laboratory or field blanks.
R	Unusable result. Analyte may or may not be present in the sample.
J	Analyte present. Reported value may not be accurate or precise.
UJ	Not detected. Reporting limit may not be accurate or precise.

Laboratory Qualifiers

The laboratory may have applied one or more of the following data qualifiers to analysis results, as warranted:

DIL	The concentration is estimated or not reported due to dilution or to the presence of interfering analytes.
NC	The recovery and or RPD were not calculated.
J	Estimated value; result falls between method detection limit (mdl) and practical quantitation limit (pql).
U	Analyte was not detected at the specified reporting limit
B	Analyte concentration is not significantly greater than that detected in an associated method blank.

J	Estimated value; result falls between method detection limit (mdl) and practical quantitation limit (pql).
*	Surrogate recovery is outside stated control limits.
J	Method blank contamination. The associated method blank contains the target analyte at a reportable level.
B	Estimated result. Result is less than reporting limit (RL)
Q	Elevated reporting limit. The reporting limit is elevated because sample dilution was required to bring target compounds within calibration range of the analytical system.
G	Elevated reporting limit. The reporting limit is elevated because sample dilution was required for analysis due to matrix interference.

These lab qualifiers are applied independent of DuPont In-House Data Review (DDR) qualifiers.

Appendix P
Table 1
Mirror Lake Lime vs GSI Protection

						Sample ID	MLKE-LIME 10/25/96
						Date	
						Top (ft)	
CAS No.	Analyte	units	Total (T)/ Diss. (D)	Screening Criteria	Bottom (ft)	Duplicate #	
71556	1,1,1-TRICHLOROETHANE	ug/kg	T	4000			<2.
79345	1,1,2,2-TETRACHLOROETHANE	ug/kg	T	1600			<2.
79005	1,1,2-TRICHLOROETHANE	ug/kg	T	6600			<4.
75343	1,1-DICHLOROETHANE	ug/kg	T	15000			<2.
75354	1,1-DICHLOROETHENE	ug/kg	T	1300			<4.
95501	1,2-DICHLOROBENZENE	ug/kg	T	360			<71.
107062	1,2-DICHLOROETHANE	ug/kg	T	7200			<4.
78875	1,2-DICHLOROPROPANE	ug/kg	T	5800			<6.
541731	1,3-DICHLOROBENZENE	ug/kg	T	1100			<71.
106467	1,4-DICHLOROBENZENE	ug/kg	T	290			<71.
110758	2-CHLOROETHYL VINYL ETHER	ug/kg	T	NA			<4.
107028	ACROLEIN	ug/kg	T	NA			<42.
107131	ACRYLONITRILE	ug/kg	T	100			<21.
71432	BENZENE	ug/kg	T	4000			4. J
75274	BROMODICHLOROMETHANE	ug/kg	T	NA			<4.
75252	BROMOFORM	ug/kg	T	NA			<2.
56235	CARBON TETRACHLORIDE	ug/kg	T	900			<2.
108907	CHLOROBENZENE	ug/kg	T	940			<2.
124481	CHLORODIBROMOMETHANE	ug/kg	T	NA			<2.
67663	CHLOROFORM	ug/kg	T	3400			<2.
10061015	CIS-1,3-DICHLOROPROPENE	ug/kg	T	NA			<2.
75003	ETHYL CHLORIDE	ug/kg	T	NA			<6.
100414	ETHYLBENZENE	ug/kg	T	360			<2.
74839	METHYL BROMIDE	ug/kg	T	700			<6.
74873	METHYL CHLORIDE	ug/kg	T	NA			<4.
75092	METHYLENE CHLORIDE	ug/kg	T	19000			7. J
127184	TETRACHLOROETHYLENE	ug/kg	T	900			<2.
108883	TOLUENE	ug/kg	T	2800			<2.
156605	TRANS-1,2-DICHLOROETHENE	ug/kg	T	30000			<4.
10061026	TRANS-1,3-DICHLOROPROPENE	ug/kg	T	NA			<2.
79016	TRICHLOROETHENE	ug/kg	T	4000			<2.
75014	VINYL CHLORIDE	ug/kg	T	300			<4.
120821	1,2,4-TRICHLOROBENZENE	ug/kg	T	1800			<71.
122667	1,2-DIPHENYLHYDRAZINE	ug/kg	T	NA			<140.
88062	2,4,6-TRICHLOROPHENOL	ug/kg	T	330			<140.
120832	2,4-DICHLOROPHENOL	ug/kg	T	380			<71.
105679	2,4-DIMETHYLPHENOL	ug/kg	T	7600			<140.
51285	2,4-DINITROPHENOL	ug/kg	T	NA			<350.
121142	2,4-DINITROTOLUENE	ug/kg	T	NA			<140.
606202	2,6-DINITROTOLUENE	ug/kg	T	NA			<140.
95578	2-CHLOROPHENOL	ug/kg	T	440			<71.
88755	2-NITROPHENOL	ug/kg	T	NA			<140.
91941	3,3'-DICHLOROBENZIDINE	ug/kg	I	2000			<280.

Criteria = MDEQ SOIL:GW/SW INTERFACE PROTECTION #12

^ and shaded cells = Concentration above criteria (NDs [^] assumed to be 50% reporting limit)

< and ND = Non detect at stated reporting limit

Appendix P
Table 1
Mirror Lake Lime vs GSI Protection

						Sample ID	MLKE-LIME 10/25/96
						Date	
						Top (ft)	
						Bottom (ft)	
CAS No.	Analyte	units	Total (T)/ Diss. (D)	Screening Criteria	Duplicate #		1
534521	4,6-DINITRO-2-METHYLPHENOL	ug/kg	T	NA			<350.
101553	4-BROMOPHENYL PHENYL ETHER	ug/kg	T	NA			<210.
59507	4-CHLORO-3-METHYLPHENOL	ug/kg	T	280			<140.
7005723	4-CHLOROPHENYL PHENYL ETHER	ug/kg	T	NA			<140.
100027	4-NITROPHENOL	ug/kg	T	NA			<350.
83329	ACENAPHTHENE	ug/kg	T	4400			<71.
208968	ACENAPHTHYLENE	ug/kg	T	NA			<71.
120127	ANTHRACENE	ug/kg	T	NA			<71.
92875	BENZIDINE	ug/kg	T	NA			<1800.
56553	BENZO(A)ANTHRACENE	ug/kg	T	NA			<71.
205992	BENZO(B)FLUORANTHENE	ug/kg	T	NA			<140.
191242	BENZO(G,H,I)PERYLENE	ug/kg	T	NA			<140.
207089	BENZO(K)FLUORANTHENE	ug/kg	T	NA			<280.
50328	BENZO(A)PYRENE	ug/kg	T	NA			<140.
108601	BIS(2-CHLORO-1-METHYLETHYL) ETHER	ug/kg	T	NA			<140.
111911	BIS(2-CHLOROETHOXY)METHANE	ug/kg	T	NA			<71.
111444	BIS(2-CHLOROETHYL)ETHER	ug/kg	T	300			<140.
117817	BIS(2-ETHYLHEXYL)PHTHALATE	ug/kg	T	NA			<140.
85687	BUTYL BENZYL PHTHALATE	ug/kg	T	26000			<140.
218019	CHRYSENE	ug/kg	T	NA			<71.
84742	DI-N-BUTYL PHTHALATE	ug/kg	T	11000			<71.
53703	DIBENZ(A,H)ANTHRACENE	ug/kg	T	NA			<140.
84662	DIETHYL PHTHALATE	ug/kg	T	2200			<140.
131113	DIMETHYL PHTHALATE	ug/kg	T	NA			<71.
206440	FLUORANTHENE	ug/kg	T	5500			<71.
86737	FLUORENE	ug/kg	T	5300			<71.
118741	HEXACHLOROBENZENE	ug/kg	T	350			<210.
87683	HEXACHLOROBUTADIENE	ug/kg	T	91			<140.
77474	HEXACHLOROCYCLOPENTADIENE	ug/kg	T	NA			<350.
67721	HEXACHLOROETHANE	ug/kg	T	1800			<140.
193395	INDENO (1,2,3-CD) PYRENE	ug/kg	T	NA			<140.
78591	ISOPHORONE	ug/kg	T	11000			<140.
117840	N-DIOCTYL PHTHALATE	ug/kg	T	NA			<140.
621647	N-NITROSODI-N-PROPYLAMINE	ug/kg	T	NA			<140.
62759	N-NITROSODIMETHYLAMINE	ug/kg	T	NA			<140.
86306	N-NITROSODIPHENYLAMINE	ug/kg	T	NA			<140.
91203	NAPHTHALENE	ug/kg	T	870			<71.
98953	NITROBENZENE	ug/kg	T	3600			<71.
91587	PCN-2	ug/kg	T	NA			<71.
87865	PENTACHLOROPHENOL	ug/kg	T	NA			<350.
85018	PHENANTHRENE	ug/kg	T	5300			<71.
108952	PHENOL	ug/kg	T	4200			1900
129000	PYRENE	ug/kg	I	NA			<140.

Criteria = MDEQ SOIL:GW/SW INTERFACE PROTECTION #12

^ and shaded cells = Concentration above criteria (NDs [^] assumed to be 50% reporting limit)

< and ND = Non detect at stated reporting limit

Appendix P
Table 1
Mirror Lake Lime vs GSI Protection

						Sample ID	MLKE-LIME 10/25/96
						Date	
						Top (ft)	
						Bottom (ft)	
CAS No.	Analyte	units	Total (T)/ Diss. (D)	Screening Criteria	Duplicate #		1
7440360	ANTIMONY	ug/kg	T	94000			730 J
7440382	ARSENIC	ug/kg	T	70000			1040 J
7440417	BERYLLIUM	ug/kg	T				1100
7440439	CADMIUM	ug/kg	T				144 J
7440473	CHROMIUM	ug/kg	T				7000
7440508	COPPER	ug/kg	T				3900 J
7439921	LEAD	ug/kg	T				6200
7439976	MERCURY	ug/kg	T	50			<57
7440020	NICKEL	ug/kg	T				3900 J
7782492	SELENIUM	ug/kg	T	400			^930 J
7440224	SILVER	ug/kg	T	100			<1000
7440280	THALLIUM	ug/kg	T	4200			<830
7440666	ZINC	ug/kg	T				13700 J
EVS0198	PERCENT MOISTURE	% BY WT.	T				52.9

Criteria = MDEQ SOIL:GW/SW INTERFACE PROTECTION #12

^ and shaded cells = Concentration above criteria (NDs [^] assumed to be 50% reporting limit)

< and ND = Non detect at stated reporting limit

Appendix P

Table 2

Mirror Lake Surface Water vs. Aquatic Life Water Quality Criteria

Analyte	Units	Total (T)/ Diss. (D)	Aquatic WQS Screening Criteria	Sample ID Date Top (ft) Bottom (ft) Duplicate #	MLKE-WAT 10/25/96 1
1,1,1-TRICHLOROETHANE	ug/l	T	89		<1.
1,1,2,2-TETRACHLOROETHANE	ug/l	T	380		<2.
1,1,2-TRICHLOROETHANE	ug/l	T	500		<2.
1,1-DICHLOROETHANE	ug/l	T	740		<2.
1,1-DICHLOROETHENE	ug/l	T	130		<1.
1,2,4-TRICHLOROBENZENE	ug/l	T	30		<1.
1,2-DICHLOROBENZENE	ug/l	T	13		<1.
1,2-DICHLOROETHANE	ug/l	T	2000		<2.
1,2-DICHLOROPROPANE	ug/l	T	230		<1.
1,2-DIPHENYLHYDRAZINE	ug/l	T			<1.
1,3-DICHLOROBENZENE	ug/l	T	28		<1.
1,4-DICHLOROBENZENE	ug/l	T	16		<1.
2,4,6-TRICHLOROPHENOL	ug/l	T	5		<1.
2,4-DICHLOROPHENOL	ug/l	T	19		<2.
2,4-DIMETHYLPHENOL	ug/l	T	380		<1.
2,4-DINITROPHENOL	ug/l	T	19		<5.
2,4-DINITROTOLUENE	ug/l	T			<2.
2,6-DINITROTOLUENE	ug/l	T			<1.
2-CHLOROETHYL VINYL ETHER	ug/l	T			<2.
2-CHLOROPHENOL	ug/l	T	24		<1.
2-NITROPHENOL	ug/l	T			<2.
3,3'-DICHLOROBENZIDINE	ug/l	T	4.5		<2.
4,6-DINITRO-2-METHYLPHENOL	ug/l	T			<5.
4-BROMOPHENYL PHENYL ETHER	ug/l	T			<2.
4-CHLORO-3-METHYLPHENOL	ug/l	T	7.4		<2.
4-CHLOROPHENYL PHENYL ETHER	ug/l	T			<2.
4-NITROPHENOL	ug/l	T	60		<5.
ACENAPHTHENE	ug/l	T	38		<1.
ACENAPHTHYLENE	ug/l	T			<1.
ACROLEIN	ug/l	T			<40.
ACRYLONITRILE	ug/l	T	66		<10.
ANTHRACENE	ug/l	T			<1.
ANTIMONY	ug/l	T	240		<3.1
ARSENIC	ug/l	T	150		<1.5
BENZENE	ug/l	T	200		<1.
BENZIDINE	ug/l	T			<20.
BENZO(A)ANTHRACENE	ug/l	T			<1.
BENZO(B)FLUORANTHENE	ug/l	T			<2.
BENZO(G,H,I)PERYLENE	ug/l	T			<2.
BENZO(K)FLUORANTHENE	ug/l	T			<2.
BENZO(A)PYRENE	ug/l	T			<2.
BERYLLIUM	ug/l	T	2		<1.3
BIS(2-CHLORO-1-METHYLETHYL) ETHER	ug/l	T			<2.

< and ND = Non detect at stated reporting limit

Appendix P

Table 2

Mirror Lake Surface Water vs. Aquatic Life Water Quality Criteria

Analyte	Units	Total (T)/ Diss. (D)	Aquatic WQS Screening Criteria	Sample ID Date Top (ft) Bottom (ft) Duplicate #	MLKE-WAT 10/25/96 1
BIS(2-CHLOROETHOXY)METHANE	ug/l	T			<1.
BIS(2-CHLOROETHYL)ETHER	ug/l	T			<1.
BIS(2-ETHYLHEXYL)PHTHALATE	ug/l	T			<2.
BROMODICHLOROMETHANE	ug/l	T			<1.
BROMOFORM	ug/l	T			<1.
BUTYL BENZYL PHTHALATE	ug/l	T	67		<2.
CADMIUM	ug/l	T	2		<.52
CARBON TETRACHLORIDE	ug/l	T	89		<1.
CHLOROBENZENE	ug/l	T	47		<1.
CHLORODIBROMOMETHANE	ug/l	T			<2.
CHLOROFORM	ug/l	T	630		<1.
CHROMIUM	ug/l	T	74		<1.2
CHRYSENE	ug/l	T			<1.
CIS-1,3-DICHLOROPROPENE	ug/l	T			<1.
COPPER	ug/l	T	9		<3.8
DIBENZ(A,H)ANTHRACENE	ug/l	T			<2.
DIETHYL PHTHALATE	ug/l	T	110		<2.
DIMETHYL PHTHALATE	ug/l	T			<3.
DI-N-BUTYL PHTHALATE	ug/l	T	9.7		<1.
ETHYL CHLORIDE	ug/l	T	1100		<3.
ETHYLBENZENE	ug/l	T	18		<2.
FLUORANTHENE	ug/l	T	1.6		<1.
FLUORENE	ug/l	T	12		<1.
HEXACHLOROBENZENE	ug/l	T			<1.
HEXACHLOROBUTADIENE	ug/l	T	1		<1.
HEXACHLOROCYCLOPENTADIENE	ug/l	T			<3.
HEXACHLOROETHANE	ug/l	T	13		<2.
INDENO (1,2,3-CD) PYRENE	ug/l	T			<2.
ISOPHORONE	ug/l	T	1300		<1.
LEAD	ug/l	T	10		<2.0
MERCURY	ug/l	T	0.77		.066 J
METHYL BROMIDE	ug/l	T	35		<3.
METHYL CHLORIDE	ug/l	T			<3.
METHYLENE CHLORIDE	ug/l	T	1500		<2.
NAPHTHALENE	ug/l	T	13		<1.
N-DIOCTYL PHTHALATE	ug/l	T			<2.
NICKEL	ug/l	T	52		<5.4
NITROBENZENE	ug/l	T	220		<1.
N-NITROSODIMETHYLAMINE	ug/l	T			<2.
N-NITROSODI-N-PROPYLAMINE	ug/l	T			<2.
N-NITROSODIPHENYLAMINE	ug/l	T			<2.
PCN-2	ug/l	T			<1.
PENTACHLOROPHENOL	ug/l	T	9		<1.

< and ND = Non detect at stated reporting limit

Appendix P

Table 2

Mirror Lake Surface Water vs. Aquatic Life Water Quality Criteria

Analyte	Units	Total (T)/ Diss. (D)	Aquatic WQS Screening Criteria	Sample ID Date Top (ft) Bottom (ft) Duplicate #	MLKE-WAT 10/25/96
PHENANTHRENE	ug/l	T	2.4		<1.
PHENOL	ug/l	T	450		<1.
PYRENE	ug/l	T			<1.
SELENIUM	ug/l	T	5		3.6 J
SILVER	ug/l	T	0.06		<3.6
TETRACHLOROETHYLENE	ug/l	T	190		<1.
THALLIUM	ug/l	T	7.2		<4.5
TOLUENE	ug/l	T	270		<2.
TRANS-1,2-DICHLOROETHENE	ug/l	T	1500		<2.
TRANS-1,3-DICHLOROPROPENE	ug/l	T			<1.
TRICHLOROETHENE	ug/l	T	200		<1.
VINYL CHLORIDE	ug/l	T	930		<2.
ZINC	ug/l	T	118		<12

Notes:

Value for trivalent chromium was used for chromium.

Hardness dependant constituents calculated assuming hardness = 100 mg/L.

Mirror Lake data were screened against aquatic organism-based WQC because there are no fish in the Lake.

Dissolved fraction Hg value was used to screen total as this is believed to be a conservative estimate of total Hg in surface water.

No human contact with Mirror lake for recreational use was assumed.

< and ND = Non detect at stated reporting limit