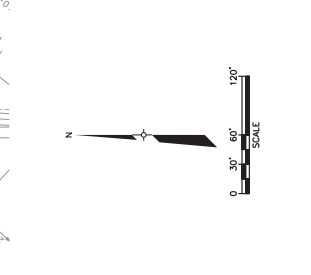


- LEGEND**
- EXISTING CONTOUR (2 FT INTERVAL)
 - PROPERTY BOUNDARY
 - PROPOSED GRADE BREAK (SUBCELLS G2 AND G3)
 - PROPOSED TOP OF SECONDARY LINER CONTOUR (SUBCELLS G2 AND G3) (2 FT INTERVAL)
 - 710
 - 710
 - 710
 - 503
 - 3:1
 - PROPOSED DIKE COORDINATE POINT NO.
 - PROPOSED 2 EXTRA LAYERS OF GEOMET, 7.5' WIDE BENEATH GECOMPOSITE WITH FLOW DIRECTION
 - PROPOSED LEAK DETECTION RESER/ SECONDARY SAMPLING PIPE BENEATH GECOMPOSITE WITH FLOW DIRECTION
 - PROPOSED 5 EXTRA LAYERS OF GEOMET, 11.5' WIDE, BENEATH GECOMPOSITE WITH FLOW DIRECTION
 - PROPOSED SECONDARY COLLECTION



SECONDARY PERIMETER DIKE COORDINATES

Point No.	Northing	Easting	Elevation (ft)
225	7593.05	5031.51	685.01
226	7591.29	4923.32	656.36
227	7593.67	5032.75	686.20
228	7498.71	5027.05	688.09
229	7340.00	5012.85	681.14
230	7338.74	4904.54	661.22
231	7275.80	5061.92	682.69
232	7179.18	5070.45	684.75
233	7127.83	4934.99	663.35
234	7085.28	5007.50	739.24
235	7045.49	5004.48	685.59
236	7062.34	5051.36	697.71
237	7058.04	5001.89	685.39
238	6952.28	5011.24	688.24
239	6952.28	5011.24	688.24
240	7058.04	5001.89	685.39
241	6952.28	5011.24	688.24

SECONDARY PERIMETER DIKE COORDINATES

Point No.	Northing	Easting	Elevation (ft)
214	7585.11	5039.91	712.66
215	7592.76	5083.32	709.56
216	7594.91	5070.03	713.51
217	7594.91	5083.4	709.66
218	7594.24	5072.69	706.53
219	7594.34	5051.47	697.89
220	7584.87	5031.37	703.56
221	7584.87	5045.71	695.6
222	7587.85	5021.52	733.74
223	7587.85	5041.27	692.31
224	7576.78	5029.03	697.65
225	7574.54	5010.47	683.86
226	7574.54	5011.24	688.24
227	7574.54	5011.24	688.24



NTH Consultants, Ltd.
Infrastructure Engineering and
Environmental Services

Northville, MI 48161-5530
Ann Arbor, MI 48106-1500
Grand Rapids, MI 49508-3690
Livonia, MI 48150-3200
Cleveland, OH 44130-1540
Indianapolis, IN 46225-1940

REV	DESCRIPTION	DATE	BY
A	PRELIM REVISIONS		
B	REVISIONS		

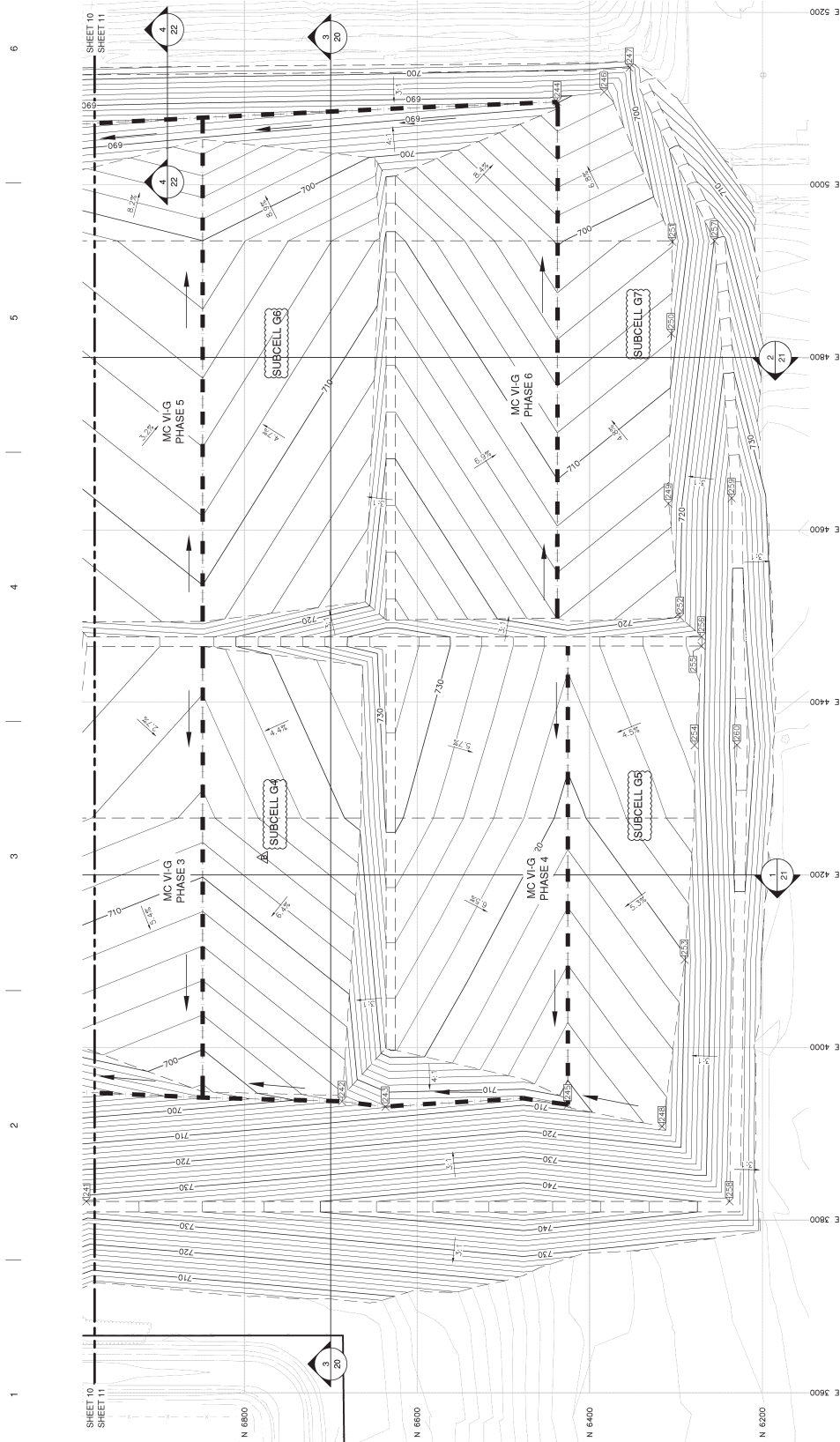
PROJECT NAME:
MASTER CELL VI&G

PROJECT LOCATION:
**WAYNE DISPOSAL, INC.
SITE NO. 2007
BELLEVILLE, MICHIGAN**

DATE: 11/12/08
DRAWN BY: [Name]
CHECKED BY: [Name]
SCALE: AS SHOWN
PROJECT NO.: 13-0008103

SHEET TITLE:
**TOP OF SECONDARY
LINER GRADING PLAN (3
OF 3)**

SHEET REFERENCE NUMBER:
11



LEGEND

- EXISTING CONTOUR (2 FT INTERVAL)
- PROPERTY BOUNDARY
- PROPOSED GRADE BREAK
- PROPOSED TOP OF SECONDARY CONTOUR (2 FT INTERVAL)
- PROPOSED DIKE COORDINATE POINT NO.
- PROPOSED SLOPE
- PROPOSED 2' EXTRA LAYERS OF GEOTEXT. 7.5' WIDE BENEATH GEOCOMPOSITE WITH FLOW DIRECTION

SECONDARY PERIMETER DIKE COORDINATES

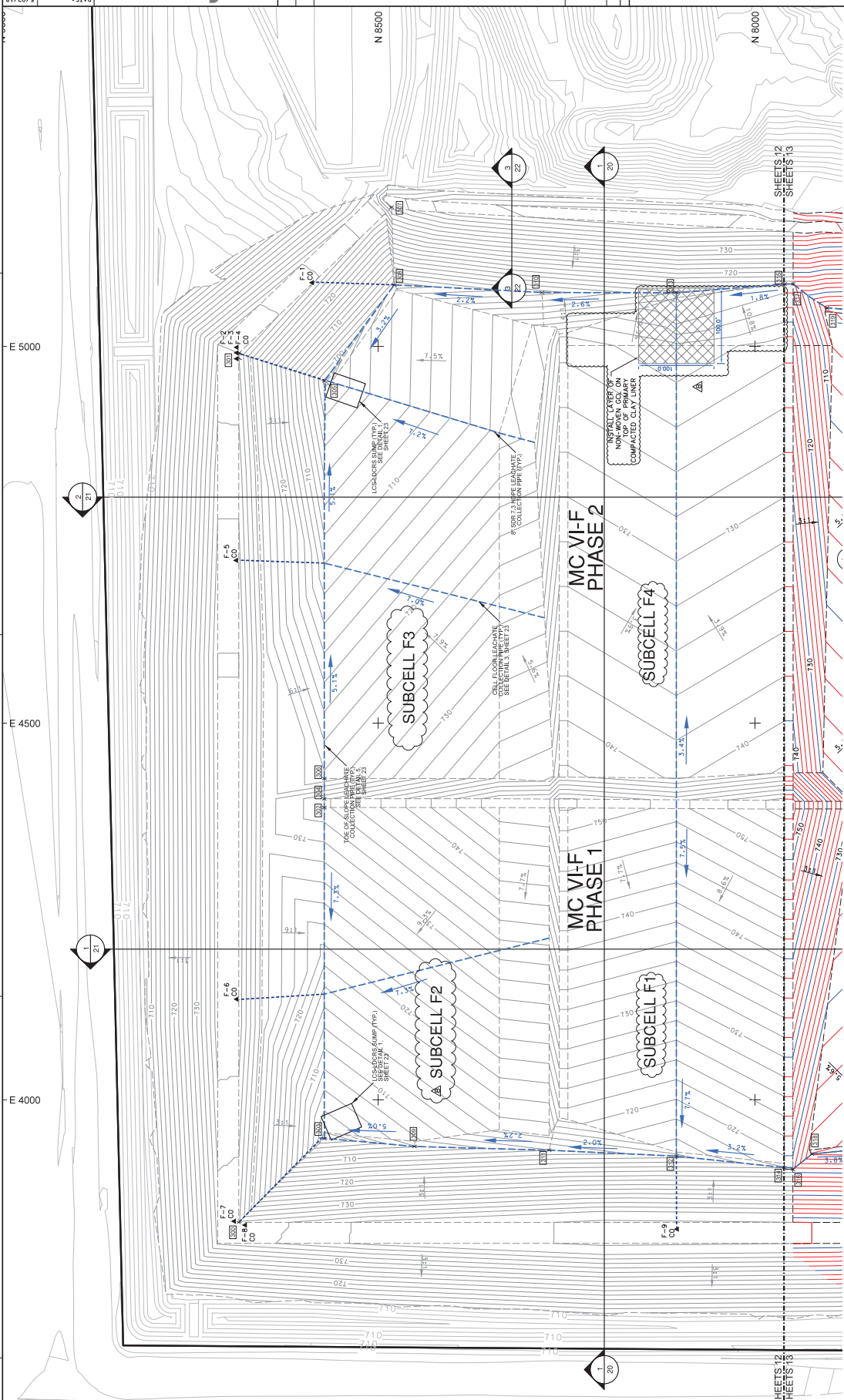
Point No.	Nothing	Easting	Elevation (ft)
255	6270.50	4465.41	728.70
256	6270.26	4476.27	728.59
257	6235.28	4934.88	720.24
258	6237.80	3821.52	739.23
259	6235.55	4636.87	739.17
260	6229.43	4350.65	742.90

SECONDARY PERIMETER DIKE COORDINATES

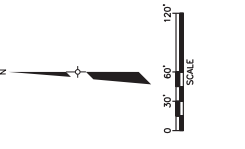
Point No.	Nothing	Easting	Elevation (ft)
244	6437.59	5096.06	688.43
245	6423.35	3933.63	707.86
246	6383.34	5107.71	690.84
247	6353.82	5135.70	699.60
248	6316.02	3908.50	712.72
249	6308.86	4630.41	714.90
250	6305.63	4827.81	707.70
251	6304.21	4934.01	703.81
252	6295.30	4486.77	720.16
253	6290.14	4101.64	719.79
254	6278.55	4350.36	726.66

- NOTES:**
- THE BASE MAP WAS CREATED USING AN AERIAL SURVEY TAKEN IN 2001 BY AIR-LAND SURVEY AND PHOTOGRAMMETRY IN 2007, AND A GROUND SURVEY BY WDI IN OCTOBER 2008.
 - A MINIMUM OF 5 YEARS PRIOR TO CONSTRUCTING MC VI&G PHASES 5 THROUGH 7, THE EXISTING DIKE LOCATIONS AND NEED FOR DOWNSIZING FOR THE EXISTING DIKE TO REMAIN IN ASSURANCE OF THE DIKE USING DESIGN TO CONTROL THE ASSURANCE OF THE DIKE OF THE RESULTS OF THIS INVESTIGATION AND REVISION SHALL BE APPROVED BY THE MED PRIOR TO CONSTRUCTION OF MC VI&G PHASES 3 TO 6.

REV	DATE	DESCRIPTION
1	6/17/11	PHASING DESIGNATIONS
2	9/23/11	PER MDC COMMENTS
3	5/02/18	SUBCELLS G2 AND G3 REVISIONS



- LEGEND**
- 710 EXISTING CONTOUR (2 FT INTERVAL)
 - PROPERTY BOUNDARY
 - PROPOSED GRADE BREAK (SUBCELLS G2 AND G3)
 - 710 PROPOSED TOP OF PRIMARY LINER CONTOUR (SUBCELLS G2 AND G3) (2 FT INTERVAL)
 - 710 GRADE BREAK (SEPTEMBER 2011 PERMIT) (SUBCELLS G2 AND G3) (2 FT INTERVAL)
 - 710 PERMITTED TOP OF PRIMARY LINER GRADES BY NTH, DATED SEPTEMBER 2011 (2 FT INTERVAL)
 - 500 PROPOSED DIKE COORDINATE POINT NO.
 - 311 PROPOSED SLOPE
 - PROPOSED LEACHATE COLLECTION PIPE AND FLOW DIRECTION
 - PROPOSED LEACHATE CLEANOUT PIPE
 - PROPOSED PRIMARY COLLECTION SUMP



PRIMARY PERIMETER DIKE COORDINATES

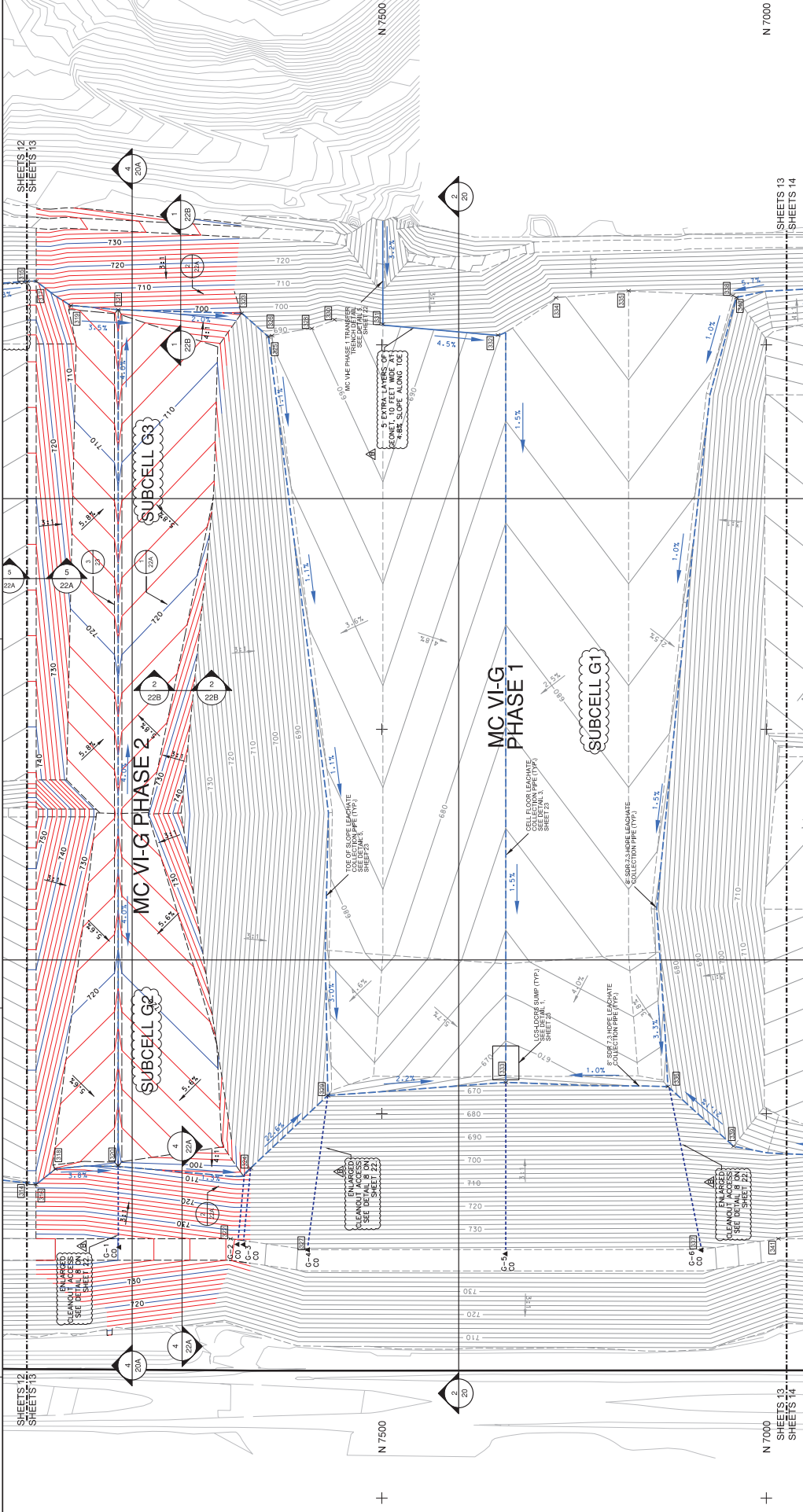
Point No.	Northing	Easting	Elevation (ft)
310	8282.69	5071.67	707.20
311	8273.20	3933.29	709.92
312	8104.36	3925.25	713.29
313	8104.36	5071.95	711.75
314	7961.21	3910.06	717.86
315	7961.21	5082.91	714.76
316	7949.75	3907.7	718.61
317	7949.75	5082.91	714.76
318	7924.5	3928.02	711.75
319	7904.56	5051.05	703.11

PRIMARY PERIMETER DIKE COORDINATES

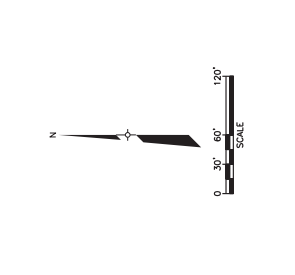
Point No.	Northing	Easting	Elevation (ft)
300	8685.01	3837.32	724.39
301	8685.01	4990.85	724.01
302	8571.54	4388.00	733.49
303	8571.54	3948.60	699.97
304	8571.54	4395.64	733.49
305	8571.54	4954.14	697.53
306	8571.54	4426.45	724.56
307	8482.21	5185.03	724.79
308	8478.59	5081.75	702.80
309	8451.95	3938.08	705.82

NOTE:

- THIS MAP WAS USED TO LOCATE AN AREA IN AREA 16, 17, 18, 19, 20, 21, 22, 23, 24, 25, 26, 27, 28, 29, 30, 31, 32, 33, 34, 35, 36, 37, 38, 39, 40, 41, 42, 43, 44, 45, 46, 47, 48, 49, 50, 51, 52, 53, 54, 55, 56, 57, 58, 59, 60, 61, 62, 63, 64, 65, 66, 67, 68, 69, 70, 71, 72, 73, 74, 75, 76, 77, 78, 79, 80, 81, 82, 83, 84, 85, 86, 87, 88, 89, 90, 91, 92, 93, 94, 95, 96, 97, 98, 99, 100.
- GRADES DEPICTED IN MC VI-G PHASE 2 SUBCELLS G2 AND G3 REPRESENT THE TOP OF PRIMARY LINER GRADES BY NTH, DATED SEPTEMBER 2011. TOP OF PRIMARY LINER GRADES BY NTH, DATED SEPTEMBER 2011.



- LEGEND**
- 710 EXISTING CONTOUR (2 FT INTERVAL)
 - PROPERTY BOUNDARY
 - PROPOSED GRADE BREAK (SUBCELLS G2 AND G3)
 - PROPOSED LEACHATE COLLECTION PIPE (TYP.)
 - GRADE BREAK (SEPTEMBER 2011 PERMIT)
 - PERMITTED TOP OF PRIMARY LINER GRADES OF 1911, DATED SEPTEMBER 2011 (2 FT INTERVAL)
 - PROPOSED DIKE COORDINATE POINT NO.
 - PROPOSED LEACHATE COLLECTION PIPE AND FLOW DIRECTION
 - PROPOSED LEACHATE CLEANOUT PIPE
 - PROPOSED PRIMARY COLLECTION SUMP
 - PROPOSED EXTRA LAYERS OF GEOTEXTILE WITH TRANSMISSIVITY BARRIER (GEOCOMPOSITE WITH LEAK DIRECTION)



PRIMARY PERIMETER DIKE COORDINATES

Point No.	Northing	Easting	Elevation (ft)
328	7591.06	5011.51	690.24
329	7591.00	4921.55	671.56
330	7561.67	5032.76	691.59
331	7498.71	5077.05	693.52
332	7546.00	5013.85	696.42
333	7538.74	4946.24	666.42
334	7572.49	5061.29	697.74
335	7570.18	5074.45	699.04
336	7538.04	4951.19	695.55
337	7568.38	5033.30	705.24
338	7503.49	5064.48	697.10
339	7503.63	5057.62	693.00
340	7508.95	5061.69	695.79
341	6964.38	5032.32	732.25

PRIMARY PERIMETER DIKE COORDINATES

Point No.	Northing	Easting	Elevation (ft)
314	7591.31	5010.06	717.86
315	7560.81	5092.91	714.26
316	7549.75	5007.77	718.43
317	7549.43	5092.91	714.26
318	7591.15	5010.02	711.76
319	7591.56	5051.05	703.12
320	7542.87	5011.97	708.62
321	7595.74	5045.77	700.84
322	7595.74	5017.32	713.74
323	7592.58	5040.91	697.15
324	7570.57	5019.39	703.88
325	7547.35	5010.49	697.00
326	7542.85	5011.35	698.18
327	7595.74	5021.09	728.60

