

## **Attachment 2**

### **Contingency Plan**

**Post Closure RCRA Contingency Plan**

**Woodland Meadows North Landfill  
Canton, Michigan**

**U.S.EPA ID Number  
MID 000 810 408**

Revised September 2018

## TABLE OF CONTENTS

### SECTION

1.0	INTRODUCTION.....	2
1.1	Facility Description .....	2
1.2	Potential Hazardous Waste Emergencies .....	4
2.0	IMPLEMENTATION OF RESPONSE PROCEDURES.....	4
2.1	Emergency Response Coordinator's Responsibilities .....	5
3.0	AVAILABLE EMERGENCY EQUIPMENT .....	9
4.0	EVACUATION PLAN .....	9
4.1	Re-occupancy of Facility .....	10
5.0	INCIDENT REPORTING.....	10
6.0	AMENDMENTS TO CONTINGENCY PLAN.....	11

### TABLES (Follow Text)

1. Spill Incident Response Data and Reportable Quantity Limits, Generator Information for D.O.T. Requirements
2. Notification Action Summary
3. Facility Emergency Equipment
4. Spill Reporting Requirements Matrix

### FIGURES (Follow Text)

1. Facility Layout and Location of Emergency Response Equipment
2. Contingency Plan Implementation Logic Diagram
3. Woodland Meadows North Landfill Evacuation Routes

### APPENDICES

- A. Incident Report Form
- B. Emergency Response Guides (ERG)
- C. Agency Plan Transmittal Form
- D. Contingency Plan Distribution

## 1.0 INTRODUCTION

Waste Management of Michigan, Inc. has prepared this Resource Conservation and Recovery Act (RCRA) Contingency Plan for its closed Woodland Meadows North Landfill located at 4620 Hannan Road in Canton Township, Wayne County, Michigan.

This contingency plan includes response procedures that will be activated in the event of a significant unplanned release of hazardous waste or other major emergency at the closed facility.

Pursuant to the requirements of 40 CFR 264.51, the closed facility will maintain this contingency plan detailing the procedures to "minimize hazards to human health or the environment from fires, explosions, or any unplanned sudden or non-sudden release of hazardous waste or hazardous waste constituents to air, soil or surface water." A current copy of the contingency plan will be maintained at the Ameresco gas plant office located at 4620 Hannan Road, Canton and at the Woodland Meadows main office located at 5900 Hannan Road.

## 1.1 FACILITY DESCRIPTION

The Woodland Meadows North facility operated from 1975 to January 23, 1983 as a landfill for the co-disposal of solid hazardous and non-hazardous wastes. The facility was closed pursuant to a USEPA approved closure plan submitted in 1983 and is no longer operating as an active disposal facility. The site consists of 97 total acres of which approximately 61 acres were used for co-disposal of wastes. It is located in a sparsely populated area in the southeast 1/4 of Section 36 in Canton Township. It is situated between Hannan and Lotz Roads immediately north of the ConRail railroad tracks.

Activities currently conducted at the Woodland Meadows North Landfill are limited to landfill gas collection and distribution, leachate and condensate collection and treatment, and maintenance and monitoring activities. In addition, empty roll-off containers and trailers are stored in a gravel parking lot at the southeast corner of the site.

The landfill is sited in dense clay. The final cover consists of at least 5 feet of compacted clay soil with a vegetative cover. Leachate is pumped automatically, via underground piping, from three leachate risers to a 6,000 gallon underground storage tank equipped with a leak detection system, cathodic protection, and over-fill protection. Leachate is then automatically pumped from the UST to a 14,000 gallon above ground aeration/treatment tank, prior to discharge to the publicly owned treatment works (POTW) operated by the Great Lakes Water Authority. The leachate aeration/treatment tank (a wastewater treatment unit) is equipped with secondary containment capable of holding 22,640 gallons.

The landfill has an active gas control/recovery system consisting of numerous wells, a header system, blower, control panel and flare(s). The flare station is located outside the closed landfill area (See Figure 1). The system is capable of removing and controlling gases generated at the facility during the post-closure period. Routine inspections of system components and gas monitoring probes located around the landfill's perimeter minimize the potential for methane gas migration and associated fires or explosions.

A gas treatment plant, owned and operated by Ameresco LLC, is located on the facility property. Landfill gas collected by Woodland Meadows is treated at the plant to remove carbon dioxide, nitrogen, oxygen and trace constituents, producing a renewable natural gas (RNG) product. The RNG is piped underground to DTE metering station at the corner of Hannan And Van Born roads, and then injected into the DTE natural gas pipeline.

Ameresco has obtained its own distinct EPA ID Number for the gas plant. This contingency plan is not intended to cover the gas plant or its operations. However, because the gas plant is located on the Woodland Meadows North facility property, it is likely that Ameresco employees could be the first to discover a release or other emergency. Thus, a copy of the plan is supplied to Ameresco and kept in their gas plant.

Activities performed by Waste Management at Woodland Meadows North include:

- collection and removal of leachate and condensate;
- collection and transfer of landfill gas;
- maintenance of the gas collection equipment;
- inspection, periodic maintenance and collection of ground water samples from a ground water monitoring network;
- inspection and maintenance of the landfill final cover;
- inspection and maintenance of the landfill leachate collection system;
- inspection and maintenance of the perimeter fencing; and
- inspection and maintenance of the site's survey benchmarks.

Waste Management personnel conducting hazardous waste management activities are trained in hazardous waste operations and emergency response, and receive 8-hour refresher training annually. This training includes a review of emergency response procedures and the use and location of emergency response equipment described in this plan.

Access to the closed facility is controlled by perimeter fencing. All inspections, maintenance and monitoring activities are supervised by the Site Manager, or his/her trained designee such as the Operations Manager, Landfill Gas Supervisor or the Gas Technician(s). One of these individuals are on-site 8:00 am - 5:00 pm, Monday through Friday, or available by phone (see Page 5 or Table 2).

Cellular phones are employed by personnel entering the fenced area of the facility for post-closure care activities. The Ticket Window Staff at Woodland Meadows RDF - Van Buren are available during normal working hours to respond to emergency response requests via telephone.

## 1.2 POTENTIAL HAZARDOUS WASTE EMERGENCIES

Hazardous waste emergencies that may occur at the landfill include:

- fires or explosions from the methane gas collection system;
- spills or leaks of leachate or methane gas condensate during pumping or treatment operations;
- a fire, explosion, or accident from other routine inspection and maintenance activities;

## 2.0 IMPLEMENTATION OF RESPONSE PROCEDURES

Any employee discovering a fire, explosion, hazardous waste spill, or other potentially hazardous situation, will immediately notify the Emergency Response Coordinator (ERC) as well as personnel in the immediate area who may be in danger. If necessary or required, the ERC will notify the appropriate local, state and federal emergency response agencies. A logic diagram of initial response activities leading to implementation of the contingency plan and controlling the emergency situation is shown on Figure 2. Table 2 provides a summary of emergency response assistance contacts for the facility.

If the event is of a minor or controllable nature and presents no potential hazard to human health or the environment, the Emergency Response Coordinator will not implement the contingency plan, but will ensure that control measures and post-emergency (cleanup) procedures are implemented and that any necessary internal and/or external reporting is completed.

During an emergency, the Emergency Response Coordinator will take all reasonable measures necessary to ensure that fires, explosions, and releases do not occur, recur, or spread to other areas of the facility. These measures will include, where applicable, stopping processes such as shutting down the gas flare station or treatment plant (whichever is operating) and collecting and containing any released wastes. If the gas operations are stopped, the ERC or trained designee will monitor leaks, pressure buildup, gas generation, or ruptures in valves, pipes, or other equipment whenever it is appropriate.

## 2.1 EMERGENCY RESPONSE COORDINATOR'S RESPONSIBILITIES

An Emergency Response Coordinator (ERC) or trained alternate is present on-site 8:00 am to 5:00 pm, Monday through Friday and available by phone during all other hours. The ERC and alternates will be thoroughly familiar with all aspects of the facility, all operations and post-closure care activities, the locations and characteristics of waste handled, the location of all records, and layout of the facility. The ERC and alternates have the authority to commit the resources needed to carry out the contingency plan. The Primary Emergency Response Coordinator will be responsible for verbal and written agency reporting where appropriate.

In the event of a fire, explosion, leak or spill that could result in a release of hazardous waste, an Emergency Response Coordinator listed below must be contacted:

<u>NAME AND TITLE</u>	<u>HOME ADDRESS</u>	<u>HOME PHONE</u>
<u>Primary Emergency Response Coordinator (ERC)</u>		

<b>Paul Mazanec</b> District Engineer	33980 Jesica Ln. New Boston, MI 48164	(734) 664-8270 Cell (734) 231-8162
--	--	---------------------------------------

Office: 5900 Hannan Road  
Wayne, MI 48184  
(734) 326-8230

### Alternate Emergency Response Coordinator

<b>Steve Forgacs</b> Environmental Protection Manager	3034 Bennington Dr. Wixom, MI 48393	Cell (734) 231-8163
--	--	---------------------

Office: 5900 Hannan Road  
Wayne, MI 48184  
(734) 326-8252

### Ameresco LLC Contact

<b>Paul Pronishen</b> Plant Specialist	1531 N Clark Lake Rd Brighton, MI 48114	Cell (810) 422-8922
---	--	---------------------

Office: Ameresco Woodland Meadows  
4620 Hannan Rd  
Canton, MI 48188  
(734) 595-8789

Responsibilities of the Emergency Response Coordinator are as follows:

- A. Whenever there is an imminent or actual emergency, the Primary Emergency Response Coordinator or the Designated Alternate Coordinator will immediately:
- Activate the facility communication system (by using telephones, two-way radios, hand or verbal signals) to alert facility personnel; and
  - Notify local or state response personnel (fire, police, ambulance, hospital, spill cleanup) and request their assistance as necessary.
- B. In the event of an emergency, the ERC will immediately identify the character, source, amount and extent of released materials by visual observation, review of analysis records if appropriate, or by chemical analysis.
- C. The ERC must assess the potential hazards and both the direct and indirect effects on human health and the environment with respect to:
- Toxic, irritating or asphyxiating gases that may be generated; and
  - Hazardous surface water runoff from extinguishing fires or explosions.

The Emergency Response Coordinators are fully trained in the potential hazards at the facility, and in the emergency response procedures outlined in this Contingency Plan. The Emergency Response Coordinator will be particularly aware of the potential explosive and fire hazards associated with the methane gas collection system.

- D. Once the hazard assessment is made, the Emergency Coordinator will determine the following:
- Can facility personnel control the emergency? If not, the ERC or his trained designee will immediately notify the appropriate off-site emergency response organization.
  - Is facility evacuation necessary? If so, the ERC or his/her trained designee will communicate necessary information to the Canton Township Police for further dissemination of information (see below). The ERC will be available to assist local police or fire departments as necessary.
- E. If the emergency situation threatens human health or the environment outside the facility, the ERC will respond as follows:

#### **Fires and Explosions**

Fires and explosions involving wastes would most likely occur in the flare station or elsewhere in the facility's gas collection system. Fire extinguishers are located at the flare station, gas treatment plant and office, and gate house and for immediate use. In the event of a fire or explosion, the person discovering the fire or explosion should:

- 1) Alert all personnel and evacuate the immediate affected area to ensure their safety. Notify the Emergency Response Coordinator or trained employee to telephone the Canton Township Fire Department and Canton Township Police Department at **911**.



Contact the ERC if he/she has not already been contacted. The ERC will direct all further activities.

- 2) Only incipient stage fires are to be extinguished by site personnel and only by trained employees with proper equipment.
- 3) Minimize the damage. Move portable equipment/vehicles away from the incident and potential exposure. Shut down the portion of the facility (e.g., turn "OFF" switches and shut off valves to gas flare station) that is not involved in the fire. Visually monitor affected areas for leaks or ruptures in pipes, valves, pumps, and insure that motor vehicles are shut off. *Smoking is not permitted near or at the gas flare station.*
- 4) Evacuate the entire facility through the main east gate of the landfill to the designated regrouping area "A" (facility entrance along Hannan Road) or "B" (gatehouse at Woodland Meadows - Van Buren).
- 5) Construct temporary berms to contain any spilled material. To the extent possible construct berms with available absorbent material or soil. Do not attempt to remove or pump spilled wastes during a fire or explosion.
- 6) The ERC or trained designee should direct the Canton Township Fire and Police Departments when they arrive and answer their questions regarding the incident and waste material in the affected area.
- 7) Contact by telephone any other needed response organizations (e.g. Ambulance Service at 911). When requesting emergency medical assistance be prepared to tell:
  - This is a request for emergency medical assistance needed by Waste Management located on Hannan Road, 3/4 mile north of Van Born Road and 1/4 mile south of U.S. 12;
  - The nature of the emergency;
  - An estimate of the number, type and condition of casualties;
  - The existence of hazardous conditions or special risks.
  - The name, location, and telephone number of the caller.
- 8) Contact by telephone appropriate Waste Management and/or Ameresco LLC personnel listed on Table 2.

## Spills/Leaks

Spills/leaks at the closed facility will most likely occur during leachate or gas condensate pumping/transfer operations. In the event of a release, the person discovering the release is directed to:

- 1) Notify the ERC and shut down the loading operations. Immediately, visually monitor for leaks or ruptures in pipes, valves, or other equipment.
- 2) Contain the release by using absorbent to construct temporary berms to contain the material and prevent migration to surface water.
- 3) Collect, contain and properly dispose of any visible contamination of soil or surface water.
- 4) For a release to the environment greater than the Reportable Quantity listed in Table 1, the ERC or Alternate will call the National Response Center (using the 24-hour toll free number: 1-800-424-8802) and Michigan Pollution Emergency Alerting System (using the 24-hour toll free 1-800-292-4706).

The information reported should include:

- Name and telephone number of reporter;
  - Name and address of the facility;
  - Time and type of incident (spill, fire, etc.);
  - Name and quantity of material(s) involved, to the extent known;
  - The extent of injuries, if any;
  - The possible hazards to human health or the environment outside the facility.
- 5) Document the steps taken to eliminate any future occurrence on the facility's Incident Report Form (*see Appendix A*).
  - 6) Determine the cause and extent of the spill.
  - 7) Contact by telephone appropriate Waste Management and/or Ameresco LLC personnel listed on Table 2.

- F. The ERC will take all reasonable measures during the emergency to protect facility personnel and ensure that fires, explosions, and spills/releases do not occur, recur or spread to other hazardous wastes at the facility.
- G. The ERC will monitor for leaks and ruptures in valves, pipes, etc., if the facility stops operations in response to the emergency.

### 3.0 AVAILABLE EMERGENCY EQUIPMENT

A telephone is available at the Ameresco Gas Treatment Plant office. The phone can be used to request outside emergency response assistance. The facility also uses cell phones for personnel entering the facility's fenced area when performing post-closure care activities.

Two-way radios can be used to contact ticket window personnel at Woodland Meadows - Van Buren to request outside emergency response assistance if necessary.

A current inventory of emergency equipment available on-site is provided on Table 3. The location of each of these items is identified on Figure 1.

### 4.0 EVACUATION PLAN

The Emergency Response Coordinator or trained designee has the sole authority to call for complete facility evacuation in response to an emergency situation that threatens the health and safety of personnel. This action may be initiated based upon analysis of the situation or at the request of an on-scene public emergency services coordinator, such as the fire or police department. In case an evacuation is necessary, the following actions are to be taken:

- A. The ERC will give a signal to initiate evacuation. The signal may be done by direct hand motion or verbally to those in direct ear or eyesight. If the ERC can not see the personnel, the two-way radio or telephone system will be used to announce "EVACUATE THE FACILITY". The primary and secondary evacuation routes are shown on Figure 3.
- B. Only emergency response vehicles will be permitted to enter the facility when directed by the ERC or emergency response organizations. No visitors will be permitted to enter.
- C. Only emergency response personnel will be permitted within the fenced area.
- D. A regrouping area will be designated by the Emergency Response Coordinator for personnel to gather for head count and identification purposes. Unless otherwise specified, the regrouping points will be the entrance area along Hannan Road (Area "A") or the ticket window at Woodland Meadows - Van Buren (Area "B"). The choice of the regrouping area will be made by the ERC based on such factors as the location of the emergency incident and the wind direction.
- E. Personnel rescue attempts will be initiated only at the direction of the Emergency Response Coordinator or Alternate in conjunction with any responding agency.

#### 4.1 REOCCUPANCY OF FACILITY

The Emergency Response Coordinator will ensure the following conditions are satisfied prior to resumption of operations at the facility. In addition, the ERC will notify the Landfill Manager and Engineer of the incidents. The Landfill Manager and/or Engineer will then notify the Director of the Michigan Department of Environmental Quality (MDEQ), Regional Administrator of U.S. EPA, and local response agencies that corrective actions have been completed and that the facility will resume operations.

Corrective measures will be completed in the affected area prior to resuming operations. The cleanup measures will include identification, removal, storage and arrangements for disposal of released materials. Wastes moved during the clean up effort will be appropriately disposed of at a licensed disposal facility. The facility's security system (fence), emergency equipment and spill supplies will be restored to the proper conditions required for operation, any equipment used in spill clean up will be cleaned before reuse. Volumes of wastes shipped off-site will be recorded in the facility's RCRA operating record.

#### 5.0 INCIDENT REPORTING

If there is a fire, explosion, or other release of hazardous waste or hazardous waste constituents that could threaten human health or the environment, or if Waste Management of Michigan, Inc. has knowledge that a spill at the Woodland Meadows North Landfill has reached surface water or groundwater, the ERC will immediately notify the MDEQ pollution emergency alerting system at (800) 292-4706. The notification will include all of the following information:

- (a) The name and telephone number of the person who is reporting the incident;
- (b) Name, address, and telephone number and EPA identification number of the facility;
- (c) Name, address and telephone number of the owner;
- (d) Date, time, and type of incident (for example, fire, chemical release);
- (e) Name and quantity of material(s) involved and released;
- (f) The extent of injuries, if any;
- (g) Estimated quantity and disposition of recovered material that resulted from the incident, if any;
- (h) An assessment of actual or potential hazards to human health or the environment, where applicable; and
- (i) The immediate response actions taken.

Any emergency event requiring implementation of the contingency plan will be reported in writing within 15 days to the Director of the MDEQ. The written report will include all of the above information, plus any additional information that the Director may require.

A copy of this report will be placed in the site's hazardous waste management operating record.

## 6.0 AMENDMENTS TO CONTINGENCY PLAN

This contingency plan is subject to review and amendment by the Emergency Response Coordinator if:

1. Applicable regulations are revised;
2. The plan fails in an emergency;
3. Changes in design, construction, operation, maintenance or other circumstances develop that materially increases the potential for fires, explosions, or releases of hazardous waste or hazardous waste constituents, or changes the response necessary in an emergency;
4. The list of Emergency Response Coordinators or alternate changes; or
5. The list of emergency equipment changes.

Designated local, state, and federal agencies will be notified of any significant changes. Personnel will be informed of all changes in the plan, with copies available to all personnel and organizations responsible for its implementation. A copy of the current contingency plan will be maintained in the Gas Treatment Plant office and in the Woodland Meadows main office.

The current list of local police departments, fire departments, hospitals, and State and local emergency response organizations (Appendix D) that may be called upon to provide emergency services, and as such, will receive a copy of the contingency plan and any changes. Each of the agencies will always have a current copy of the contingency plan and relevant background information. Letters of notification of any changes to the contingency plan will be on file at Woodland Meadows North along with acknowledgement of receipt.

## Tables

**TABLE 1**

WOODLAND MEADOWS – NORTH: GENERATED WASTE MATERIALS

SPILL INCIDENT RESPONSE DATA AND REPORTABLE QUANTITY (RQ) LIMITS *(as specified in 49 CFR 172.101 and 40 CFR 302.4)*

GENERATOR INFORMATION FOR US D.O.T. AND SARA REQUIREMENTS

Waste Name	Hazardous Waste Code	U.S. D.O.T. Shipping Name	Required Labels	RQ Pounds (kg)	ERG No.
1) Landfill leachate	F039	Hazardous waste liquid, n.o.s., 9, NA3082, PG III	Class 9	1 (0.454)	171
2) Carbon filter media	F039	Hazardous waste solid, n.o.s., 9, NA3077, PG III	Class 9	1 (0.454)	171

Notes:

- ERG = Emergency Response Guide (the listed guides are found in Appendix B)

TABLE 2

## NOTIFICATION ACTION SUMMARY

## A. AVAILABLE FACILITY COMMUNICATION SYSTEMS

Telephones: Telephones are located at the Gas Plant and 5900 Hannan Road office.

Cell Phones: Cell phones should be carried by personnel entering the fenced area of the closed facility to provide communication ability with other on-site personnel.

## B. EMERGENCY RESPONSE COORDINATOR(S) (ERC)

The following individuals are currently designated as Emergency Response Coordinators for Waste Management of Michigan, Inc. (landfill related emergencies). Personnel are instructed to call (in order) until one is contacted.

<b>Name/Title</b>	<b>Home Address/Phone</b>	<b>Office Address/Phone</b>
<i><u>Primary ERC</u></i>		
Paul Mazanec Engineer	33980 Jesica Ln. New Boston, MI 48164 (734) 664-8270 Cell (734) 231-8162	5900 Hannan Rd. Wayne, MI 48184 (734) 326-8230
<i><u>First Alternate ERC</u></i>		
Steve Forgacs Env. Protection Manager	3034 Bennington Dr. Wixom, MI 48393 Cell (734) 231-8163	5900 Hannan Rd. Wayne, MI 48184 (734) 326-8252

The following individual is the designated Contact for Ameresco LLC (gas plant related emergencies).

<i><u>Primary Contact</u></i>		
Paul Pronishen Plant Specialist	1531 N Clark Lake Rd Brighton, MI 48114 Cell (810) 422-8922	4620 Hannan Road Canton, MI 48188 (734) 595-8789



TABLE 2 (cont.)

The ERC or his trained designee is required to notify within 24 hours the following agencies if a "reportable quantity" (See Table 1) of hazardous waste has been spilled or released outside a contained area.

- National Response Center (800) 424-8802
- Michigan Pollution Emergency Alerting System (800) 292-4706

The following additional emergency response organizations would be contacted if a release, spill, fire or explosion has occurred that could threaten human health or the environment and their response assistance is required. The ERC shall call:

- Fire/Explosion

Canton Twp. Fire Dept.	911
Canton Twp. Ambulance	911
Canton Twp. Police Dept.	911

- Injury/Rescue

Canton Twp. Fire Dept.	911
Canton Twp. Ambulance	911
Annapolis Hospital	(734) 467-4000
	(734) 467-4040 (24 hour emergency)

- Spill/Release

Canton Twp. Fire Dept.	911
Canton Twp. Police Dept.	911
Michigan Pollution Emergency Alerting System	(800) 292-4706

- Clean up Contractors

US Ecology	(800) 839-3975 (24 hours)
K & D Industrial Services	(734) 729-3350 (24 hours)
Marine Pollution Control	(313) 849-2333 (24 hours)

TABLE 2 (cont.)

NOTE:

- a. The following fire departments can be dispatched by the Canton Township Fire Department for assistance:

City of Wayne Fire Dept.	(734) 722-1111
Romulus Fire Dept.	(734) 941-8585

- b. The Wayne County Office of Emergency Management can be contacted to request assistance in any disaster: (734) 942-5289

**TABLE 3**  
**CONTINGENCY PLAN**  
**FACILITY EMERGENCY EQUIPMENT**

EQUIPMENT	LOCATION
Personal Protective Equipment	Gate House
First-Aid Kit	Gate House
Stretcher	Gate House
Telephones	Gas Plant Office
Fire Blanket	Gate House
Fire Hydrants	(1) Near WMN Entrance on Hannan Road; (4) along Lotz Road
A:B:C Fire Extinguishers	(1) Gate House (2) Flare Station at each entrance (1) Gas Plant Office (1) Gas Recovery Facility
Oil Absorbing Boom (4-inch x 6-feet)	Gate House
Granular Absorbent Material (2- 50 lb bags)	Gate House
Buckets, Brooms, Shovels, Garbage Bags	Gate House
Portable Pump (40 GPM rated)	Gate House

**TABLE 4: SPILL REPORTING REQUIREMENTS**

Substance Released	Quantity	Released To:	Notification Requirements / Time Frame	Written follow up requirements	Regulatory Citation
Release of any amount of characteristic or listed hazardous waste that could threaten human health or the environment or if release has reached surface water or ground water.	any amount	environment; surface water or ground water	Immediate (within 15 minutes of discovery) to PEAS and to NRC if threat to human health or environment outside facility.	Written report within 15 days after the spill to the MDEQ-RMD (only if contingency plan had to be implemented).	Michigan Part 111, Hazardous Waste Management
Release of any product, by-product, intermediate product, oils, solvents, waste material, or any other polluting substance that reaches surface water or ground water.	any amount	surface water or ground water	Immediate to PEAS	Written report within 10 days to MDEQ-RWD (surface water releases) or MDEQ-RMD (ground water releases).	Michigan Part 31, Water Resources Protection; General Storm Water Permit
Release of hazardous substance into the environment in a quantity equal to or greater than its corresponding reportable quantity in any 24-hour period.	>= Reportable Quantity (1 lb. friable asbestos)	environment	Immediate to NRC	not required	CERCLA 40CFR302
Release of liquid industrial waste that could threaten public health, safety, welfare, or the environment, or has reached surface water or groundwater.	amount which could threaten public health, safety, welfare, or the environment. Any amount if released to surface water or groundwater.	environment; surface water or ground water	Immediate to PEAS	Written report within 30 days of incident. Submit upon request to MDEQ-RMD district supervisor.	Michigan Part 121, Liquid Industrial Waste
Release of hazardous substance or Extremely Hazardous Substances from facilities.	>=Reportable Quantity (1 lb. friable asbestos)	Does not apply if release results in exposure to persons solely within the boundaries of the facility.	Immediate (within 15 minutes of discovery) to LEPC and SERC (PEAS line accepts notification on behalf of SERC)	As soon as practicable after release (within 7 days) to LEPC and SERC. Michigan SARA Title III Program accepts reports on behalf of the SERC.	SARA Title III 40CFR355.40
Discharge of oil or a hazardous substance into or upon navigable waters of the U.S. or adjoining shorelines.	discharge would violate applicable water quality standards, or causes a sheen or film upon or discoloration of the surface of the water or adjoining shorelines.	navigable waters of the U.S. or adjoining shorelines	Immediate to NRC	not required	U.S. Clean Water Act, 33 CFR153, 40CFR110 (discharge of oil)
Spills of leachate, fuel, or wastes. Notify Department of the Environment if any fires occur.	Spill must be 55 gallons or greater or if spill is a quantity that requires reporting to any State or Federal agency.	any type of release	Immediate to Wayne County Department of the Environment (734)-326-3936	not required	Wayne County Solid Waste Ordinance (9/16/04)
(If subject to SPCC Regulations) Discharge of more than 1,000 gallons of oil into or upon the navigable waters of the US or adjoining shorelines in a single spill event, or discharge of oil in harmful quantities (40CFR110), in two spill events occurring within any 12-month period.	Discharge of more than 1000 gallons into nav. waters or discharge of oil in harmful quantities in 2 spill events within a 12 month period.	navigable waters of the U.S. or adjoining shorelines	Immediate to NRC	Submit to the Regional Administrator, within 60 days a written report (see 40CFR112.4 (a)). Submit same report at the same time to the State agency in charge of water pollution control activities in and for the State in which the facility is located.	40CFR112.4
Release of any polluting material in excess of a threshold reporting quantity during any 24-hour period	1) amount in excess of the threshold reporting quantity, see def'n in rules. 2) 50 lbs. oil to ground surface if not discovered and the oil recovered within 24 hours of the spill. 3) any amt. of oil to waters of the state if release causes unnatural turbidity, color, visual sheens, oil films, foam, solids or deposits in the water. Not reportable if discharge is less than 55 gallons if effective recovery measures are implemented in the response. 4) 50 lbs. or 50 gal. of salt to ground surface or waters of the state (unless approved by the dept. for deicing or dust suppressant)	ground or water	Immediate to the PEAS.	Submit written report within 10 days to the chief of the resource management division	Michigan Part 5, Spillage of Oil and Polluting Materials

Pollution Emergency Alerting System (PEAS): 1-800-292-4706

National Response Center (NRC): 1-800-424-8802

SERC-State Emergency Response Commission

CERCLA-Comprehensive Environmental Response, Compensation and Liability Act

LEPC-Local Emergency Planning Commission

MDEQ-Michigan Department of Environmental Quality

MDEQ-WRD - Water Resources Division

MDEQ-RMD - Resource Management Division

**Release Notification Requirements in Michigan\***

Act & Regulation	Reporting Criteria	Initial Notification	Written Follow-up Report	Notes
<p>SARA Title III Section 304 40 CFR 355.40 (EHS &amp; Hazardous Substances)</p>	<p>Release of a CERCLA hazardous substance (40 CFR 302, Table 302.4) or Extremely Hazardous Substance (EHS) (40 CFR 355, Appendix A) from a facility (all buildings, equipment, etc. located on a single site or adjacent sites owned or operated by the same person) at which a hazardous chemical (as defined under 29 CFR 1910.1200(c)) is used, produced or stored (including motor vehicles, rolling stock, and aircraft) in a quantity equal to or greater than its corresponding reportable quantity in any 24-hr period that migrates beyond the facility boundaries.</p> <p>Includes continuous release reportable under CERCLA Section 103.</p> <p>Excludes release that is federally permitted or that results in exposure to persons solely within the boundaries of the facility. See 67 FR 18899 (4/17/02) for guidance on the CERCLA federally permitted release definition for certain air emissions.</p> <p>Does not apply to the application, handling, and storage by an agricultural producer of a pesticide product registered under FIFRA.</p> <p>Excludes release &lt; 1000 lbs of NO<sub>x</sub> released to the air from combustion or combustion-related activities.</p>	<p>Immediate (within 15 minutes after discovery): to LEPC(s) of any area(s) potentially affected, and SERC (DEQ PEAS line accepts notification on behalf of SERC) by owner or operator.</p> <p>Continuous releases must be identified as such and are reported initially and when there is a significant change in the release.</p> <p>See 73 FR 76948 (12/18/08): Only CAFOs are required to report continuous releases to the air from animal waste.</p> <p>Transportation related releases can be reported to 911.</p>	<p>As soon as practicable (within 30 days) after release: to LEPC(s) and SERC.</p> <p>Not required for releases that occur during transportation or from storage incident to transportation.</p> <p>For continuous releases: Initial written within 30 days after initial telephone notification: to LEPC(s) and SERC.</p> <p>Michigan SARA Title III Program accepts reports on behalf of the SERC.</p>	<p>PEAS: 800-292-4706</p> <p>Contact your LEPC for a phone number to report releases.</p> <p>Call 911 if your LEPC is not active.</p> <p>For further information &amp; LEPC contact information, contact Michigan SARA Title III Program 517-284-7272</p>
<p>CERCLA Section 103 40 CFR 302 (Hazardous Substances)</p>	<p>Release into the environment of a CERCLA hazardous substance (40 CFR 302, Table 302.4) or hazardous constituent in a mixture or solution (including hazardous waste streams) from a vessel or facility (any building, structure, etc. including motor vehicles, rolling stock, aircraft, pipe, pipeline, well, pond, lagoon, impoundment, ditch, landfill, or site where a hazardous substance has come to be located) in a quantity equal to or greater than its corresponding reportable quantity in any 24-hour period.</p> <p>Excludes petroleum, including oil, or any fraction thereof.</p> <p>See 40 CFR 302.6 for notification requirements for radionuclide releases.</p> <p>Includes continuous release: occurs without interruption or abatement or that is routine, anticipated, and intermittent and incidental to normal operations or treatment processes.</p> <p>See 67 FR 18899 (4/17/02) for guidance on the CERCLA federally permitted release definition for certain air emissions. See 71 FR 58525 (10/4/06) re Exemption for NO<sub>x</sub> releases to the air of &lt; 1000 lbs from combustion or combustion-related activities.</p> <p>Does not apply to the application, handling, and storage by an agricultural producer of a pesticide product registered under FIFRA.</p>	<p>Immediate (within 15 minutes after discovery): to NRC by person in charge of vessel or offshore or onshore facility.</p> <p>Continuous releases must be identified as such and are reported initially and when there is a significant change in the release.</p> <p>See 73 FR 76948 (12/18/08) re Exemption from reporting continuous releases to the air from animal waste.</p>	<p>For continuous releases only: Initial written within 30 days after initial telephone notification &amp; Follow-up within 30 days of first anniversary of initial written notification: to EPA Region 5.</p>	<p>NRC 800-424-8802 or online at <a href="http://www.nrc.uscg.mil">www.nrc.uscg.mil</a></p> <p>For further information contact Michigan SARA Title III Program 517-284-7272 or EPA's Superfund, TRI, EPCRA, RMP, and Oil Information Center 800-424-9346</p>

NOTE: If the release is a **THREAT TO HUMAN HEALTH or SAFETY**, call 911 or your local fire department.

\*This table covers only those reporting requirements found in rules and regulations that apply in Michigan. Releases might be reportable under multiple regulations.

Additional reporting requirements might be found in permits, licenses, registrations, contingency and pollution prevention plans, and local ordinances.



## Release Notification Requirements in Michigan\*

Act & Regulation	Reporting Criteria	Initial Notification	Written Follow-up Report	Notes
<p>NREPA 1994 PA 451 Part 201, Environmental Remediation</p>	<p>(i) Unpermitted release into the environment over a 24-hour period of a hazardous substance (<i>July 1, 2012, edition</i> of the CERCLA list, 40 CFR 302, Table 302.4) in a quantity equal to or greater than its corresponding reportable quantity.</p> <p>Does not include release solely from UST systems regulated under Part 213, and release solely from disposal area licensed under Part 115 and discovered through disposal area's hydrogeological monitoring plan.</p> <p>Release of substance regulated by MI Dept of Agriculture &amp; Rural Development (MDARD) (fertilizer, soil conditioner, or pesticide) excluding normal agricultural practices: <i>also</i> report to MDARD.</p>	<p>Within 24 hours after discovery: to DEQ-RRD district office (PEAS after hours) by owner or operator or person holding easement interest.</p> <p>Report agricultural release to MDARD.</p>	<p>Upon request: Provide a response activity plan to DEQ-RRD district supervisor.</p>	<p>PEAS: 800-292-4706</p> <p>MDARD Agriculture Pollution Emergency Hotline: 800-405-0101</p> <p>For further information contact DEQ-RRD</p>
<p>NREPA 1994 PA 451 Part 201, Environmental Remediation (Continued)</p>	<p>(ii) The owner or operator has reason to believe that one or more hazardous substances are migrating or have migrated from his or her property and are present beyond the property boundary at a concentration in excess of cleanup criteria for unrestricted residential use.</p> <p>(iii) The release is a result of an activity that is subject to permitting under NREPA Part 615 and the owner or operator is not the owner of the surface property and the release results in hazardous substance concentrations in excess of cleanup criteria for unrestricted residential use.</p> <p>Hazardous substance means a hazardous substance defined in CERCLA (40 CFR 302), hazardous waste as defined in NREPA part 111, petroleum as defined in NREPA part 213, or any substance demonstrated to pose an unacceptable risk to public health, safety, welfare, or the environment.</p> <p>Cleanup criteria for unrestricted residential use means criteria that satisfy the requirements in section 20120a(1)(a) or (16); or as defined under NREPA part 213.</p>	<p>Within 30 days after discovery: to DEQ-RRD district office and owners of property to which hazardous substances migrated or owner of surface property by owner or operator of property where release occurred.</p> <p>Specific form required for: "Notice of Migration of Contamination" (Form EQP4482).</p>	<p>Upon request: Provide a response activity plan to DEQ-RRD district supervisor.</p>	<p>For further information contact DEQ-RRD</p>

NOTE: If the release is a **THREAT TO HUMAN HEALTH or SAFETY**, call 911 or your local fire department.

\*This table covers only those reporting requirements found in rules and regulations that apply in Michigan. Releases might be reportable under multiple regulations.

**Additional reporting requirements** might be found in **permits, licenses, registrations, contingency and pollution prevention plans, and local ordinances.**



Act & Regulation	Reporting Criteria	Initial Notification	Written Follow-up Report	Notes
<p>NREPA 1994 PA 451 Part 83, Pesticide Control Regulation 640, Commercial Pesticide Bulk Storage (Agricultural)</p>	<p>Release to the environment of a commercial pesticide &gt;5 gallons or 100 pounds.</p> <p>Reportable agricultural spills as defined in the provisions of SARA Title III section 304 and CERCLA section 103 shall be immediately reported to PEAS and the NRC.</p> <p>The term "release" excludes normal agricultural practices.</p>	<p>Immediate: to PEAS*</p> <p>Also notify NRC for spills reportable under SARA Title III &amp; CERCLA.</p> <p>*MDARD prefers direct notification to their hotline. PEAS forwards all agriculture calls to MDARD.</p>	<p>Within 90 days: to MDARD Pesticide and Plant Pest Management Div. a revised site plan.</p>	<p>MDARD Agriculture Pollution Emergency Hotline: 800-405-0101</p> <p>PEAS: 800-292-4706</p> <p>NRC 800-424-8802 or online at www.nrc.uscg.mil</p> <p>For further information contact MDARD 517-284-5644</p>
<p>NREPA 1994 PA 451 Part 85, Fertilizers Regulation 641 Commercial Fertilizer Bulk Storage Regulation 642, On Farm Fertilizer Bulk Storage (Agricultural)</p>	<p>Release to the environment of a commercial fertilizer &gt;55 gallons liquid or 650 pounds dry, or tank overfills; or an on farm fertilizer &gt; 55 gallons liquid.</p> <p>For storage tank with bladder system instead of diking: also report all overfills and internal spills.</p> <p>The term "release" excludes normal agricultural practices. The term "liquid fertilizer" excludes anhydrous ammonia.</p>	<p>Immediate: to MDARD by commercial bulk storage facility personnel</p> <p>(For farms, the regulation does not specify who makes the report.)</p>	<p>Not required.</p>	<p>MDARD Agriculture Pollution Emergency Hotline: 800-405-0101</p> <p>For further information contact MDARD 517-284-5644</p>
<p>Fire Prevention Code 1941 PA 207 Section 29.5g</p>	<p>A fire, explosion, spill, leak, accident, or related occurrence that involves the transportation, storage, handling, sale, use, or processing of hazardous material by a firm, person, or vehicle.</p> <p>Hazardous material = explosives, pyrotechnics, flammable gas, flammable compressed gas, flammable liquid, nonflammable compressed gas, combustible liquid, oxidizing material, poisonous gas or liquid, LPG, or irritating, etiologic, radioactive, or corrosive material.</p> <p>Act 207 amended 6/19/2006. The State Fire Marshall is in LARA, Bureau of Fire Services.</p>	<p>Immediately following incident, report known details regarding incident: to LARA Bureau of Fire Services and organized local fire department by owner of firm or vehicle or the person and the chief of first police or organized fire dept upon scene of incident.</p>	<p>Not required.</p>	<p>Contact LARA Bureau of Fire Services by calling the MSP HazMat hotline: 800-525-5555</p> <p>For further information: contact local fire department</p>

NOTE: If the release is a **THREAT TO HUMAN HEALTH** or **SAFETY**, call 911 or your local fire department.

\*This table covers only those reporting requirements found in rules and regulations that apply in Michigan. Releases might be reportable under multiple regulations.

Additional reporting requirements might be found in permits, licenses, registrations, contingency and pollution prevention plans, and local ordinances.



Release Notification Requirements in Michigan\*

Act & Regulation	Reporting Criteria	Initial Notification	Written Follow-up Report	Notes
<p>49 CFR 171 (Transportation of Hazardous Materials)</p>	<p>Initial verbal notice: Incident during transportation (including loading, unloading, temporary storage) involving (1) hazardous material and resulting in death, injury requiring hospitalization, public evacuation ≥ 1 hour, major transportation artery or facility closure ≥ 1 hour, or flight pattern alteration; (2) fire, breakage, spillage, or suspected radioactive contamination occurs involving a radioactive material; (3) fire, breakage, spillage or suspected contamination involving an infectious substance other than a regulated medical waste; (4) marine pollutant release exceeding 450 L (119 gal) liquid or 400 kg (882 lbs) solid; (5) other per judgment of person in possession of the hazardous material (e.g., continuing danger to life exists at scene of incident); (6) during transportation by aircraft, a fire, violent rupture, explosion or dangerous evolution of heat occurs as a direct result of a battery or battery-powered device.</p> <p>Hazardous material = CERCLA hazardous substance (40 CFR 302, Table 302.4), hazardous waste (40 CFR 262), marine pollutant (49 CFR 172.101 Appendix B), elevated temperature material, listed on Hazardous Materials Table (49 CFR 172.101), or meets criteria for hazard class/division in 49 CFR 173.</p> <p>Written follow-up report: Required for all of above, plus any unintentional release of hazardous material from a package (including tank); or any quantity of hazardous waste discharged during transportation; or structural damage to lading retention system, even if no release, on specification cargo tank with ≥ 1000 gal capacity containing hazardous material; or undeclared hazardous material discovered.</p>	<p>As soon as practical but no later than 12 hours after occurrence of the incident: to NRC by each person in physical possession of the hazardous material.</p> <p>(A reportable incident <i>must</i> be reported by telephone, not online.)</p> <p>For infectious substances, notice may be given to the Director, Centers for Disease Control and Prevention, U.S. Public Health Service instead of NRC.</p>	<p>Within 30 days after discovery: to US DOT on DOT Form F 5800.1 (01-2004) "Hazardous Materials Incident Report."</p> <p>Report online at <a href="https://hazmatonline.phmsa.dot.gov/incident/">https://hazmatonline.phmsa.dot.gov/incident/</a></p> <p>Report must be updated w/i 1 year of incident if: Death results from injury; hazardous material or package info on prior report misidentified; damage, loss or cost not known on prior report becomes known or changes by \$25,000 or 10%.</p> <p>See regulation for exceptions to written report.</p>	<p>NRC 800-424-8802 or online at <a href="http://www.nrc.uscg.mil">www.nrc.uscg.mil</a></p> <p>U.S. Public Health Service 800-232-0124</p> <p>For further information contact US DOT Hazardous Materials Information Center at 800-467-4922 or online at <a href="http://www.phmsa.dot.gov/hazmat">www.phmsa.dot.gov/hazmat</a></p>
<p>NREPA 1994 PA 451 Part 31, Water Resources Protection (Release to surface of ground, surface water, groundwater or public sewer system)</p>	<p>Unpermitted release directly or indirectly to public sewer system, surface of ground, surface water or groundwater from an oil storage facility or on-land facility of a "polluting material" (oil, salt, or any material specified in table 1 in R 324.2009) in excess of its threshold reporting quantity during any 24-hour period.</p> <p>See Part 5 rules, effective 8/31/01, for details and exemptions. HB 5586 effective 6/15/04 amended the reporting requirements.</p> <p><i>Rule revisions pending as of November 2014.</i></p>	<p>As soon as practicable after detection: to PEAS and 911 by owner, operator or manager.</p> <p>State agencies call 911 if release reported to them by another state or Canada.</p>	<p>Within 10 days after release: to DEQ-WRD district supervisor and to the local health department where the release occurred, outlining cause, discovery, response &amp; prevention of recurrence.</p>	<p>PEAS: 800-292-4706</p> <p>For further information contact DEQ-WRD</p>

NOTE: If the release is a THREAT TO HUMAN HEALTH or SAFETY, call 911 or your local fire department.

\*This table covers only those reporting requirements found in rules and regulations that apply in Michigan. Releases might be reportable under multiple regulations.

Additional reporting requirements might be found in permits, licenses, registrations, contingency and pollution prevention plans, and local ordinances.





Act & Regulation	Reporting Criteria	Initial Notification	Written Follow-up Report	Notes
<p>CWA Section 311 33 CFR 153 (Navigable waters – Coast Guard/DOT) Control of Pollution by Oil and Hazardous Substances, Discharge Removal</p>	<p>Discharge of a harmful quantity of oil or a hazardous substance from a vessel or onshore or offshore facility into or upon navigable waters of the United States or adjoining shorelines.</p> <p>Harmful quantity = oil discharge that violates applicable water quality standards, or causes a film or sheen upon or discoloration of the surface of the water or adjoining shorelines, or causes a sludge or emulsion to be deposited beneath the surface of the water or upon adjoining shorelines; or a CERCLA hazardous substance (40 CFR 302, Table 302.4) in a quantity equal to or greater than its corresponding reportable quantity.</p> <p>Oil = oil of any kind or in any form including petroleum, crude oil, petroleum refined products, sludge, oil refuse, oil mixed with wastes, etc., as well as vegetable and animal oils.</p>	<p>Immediate: to NRC by person in charge of vessel or facility.</p> <p>If direct reporting to NRC not practicable, may report to district Coast Guard or EPA predesignated OSC.</p>	<p>Not required.</p>	<p>NRC 800-424-8802 or online at <a href="http://www.nrc.uscg.mil">www.nrc.uscg.mil</a></p> <p>District 9 Coast Guard 216-902-6117</p> <p>EPA Region 5 for predesignated OSC 312-353-2318</p> <p>For further information contact EPA Region 5 at 312-353-8200 or District 9 Coast Guard at 216-902-6045</p>
<p>CWA Section 311 40 CFR 110 (Discharge of Oil)</p>	<p>Discharges of oil that violate applicable water quality standards, or cause a film or sheen upon or discoloration of the surface of the water or adjoining shorelines, or cause a sludge or emulsion to be deposited beneath the surface of the water or upon adjoining shorelines.</p> <p>Oil = oil of any kind or in any form including petroleum, crude oil, petroleum refined products, sludge, oil refuse, oil mixed with wastes, etc., as well as vegetable and animal oils.</p>	<p>Immediate: to NRC by person in charge of vessel or facility.</p>	<p>Not required.</p>	<p>NRC 800-424-8802 or online at <a href="http://www.nrc.uscg.mil">www.nrc.uscg.mil</a></p> <p>For further information contact DEQ-WRD</p>
<p>NREPA 1994 PA 451 Part 31, Water Resources Protection (Sewer Systems)</p>	<p>Discharge of untreated sewage or partially treated sewage from a sewer system onto land or into the waters of the state.</p> <p>“Sewer system” means a sewer system designed and used to convey sanitary sewage or storm water, or both.</p>	<p>Immediate (within 24 hours): to DEQ-ODWMA district office (PEAS after hours); Local health depts.; Daily newspaper circulated in source &amp; affected counties; &amp; Affected municipalities.</p>	<p>At end of discharge: to same parties notified initially on Form EQP 5857 (Rev. 12/2011) “Report of Discharges of Untreated or Partially Treated Sewage.” Includes results of E. coli testing.</p>	<p>PEAS: 800-292-4706</p> <p>For further information contact DEQ-ODWMA</p>
<p>NREPA 1994 PA 451 Part 41, Sewerage Systems</p>	<p>Discharges of pollutants from sewerage systems (which can include combined sewers) in excess of those authorized by a discharge permit issued by the DEQ to surface water or groundwater as a result of a facility breakdown or emergency.</p> <p>Sewerage systems handle sanitary sewage or other industrial liquid wastes.</p>	<p>Promptly: to DEQ-ODWMA district office (PEAS after hours) by owner.</p>	<p>Within 72 hours: to DEQ-ODWMA district supervisor, outlining cause, discovery, corrective actions taken to minimize impact, restore operations, and eliminate future unpermitted discharges.</p>	<p>PEAS: 800-292-4706</p> <p>For further information contact DEQ-ODWMA</p>

NOTE: If the release is a **THREAT TO HUMAN HEALTH or SAFETY**, call 911 or your local fire department.

\*This table covers only those reporting requirements found in rules and regulations that apply in Michigan. Releases might be reportable under multiple regulations.

Additional reporting requirements might be found in permits, licenses, registrations, contingency and pollution prevention plans, and local ordinances.



## Release Notification Requirements in Michigan\*

Act & Regulation	Reporting Criteria	Initial Notification	Written Follow-up Report	Notes
NREPA 1994 PA 451 Part 211, Underground Storage Tanks Part 213, Leaking Underground Storage Tanks	Releases of a regulated substance of any amount from underground storage tank (UST) systems (includes the emergency shutoff valve on down) subject to registration; overflow from UST fillpipe or vent onto ground; release from aboveground pipe attached to UST system.  Regulated substance = petroleum or CERCLA hazardous substance (40 CFR 302, Table 302.4) or substance listed in CAA title 1 part A sect 112. Petroleum includes, but is not limited to, crude oil, motor fuels, jet fuels, distillate fuel oils, residual fuel oils, lubricants, and petroleum solvents.	(Part 211) Within 24 hours after discovery: to LARA Bureau of Fire Services, Storage Tank Division by email, or fax on Form EQP 3826 (Rev. 4/12) If free product, Form EQP 3800 (Rev 02/2003) required by UST owner or operator, or employee of owner or operator.  Includes releases discovered years after UST system removed	(Part 213) At 180 days Initial Assessment Report on Form EQP3841 (Rev. 02/2003) if not closed; at 365 days Final Assessment Report on Form EQP3842 (Rev. 11/2006) if still not closed; at closure Closure Report on Form EQP3843 (Rev. 02/2003) to DEQ-RRD district project manager.	Email: <a href="mailto:deq-std-tanks@michigan.gov">deq-std-tanks@michigan.gov</a>  Fax: 517-335-2245  For further information contact DEQ-RRD or phone 800-MICHUST
NREPA 1994 PA 451 Part 111, Hazardous Waste Management (Generators, Treatment, Storage & Disposal Facilities (TSDF); Transporters)	Any amount of characteristic hazardous waste or listed hazardous waste (as defined in R 299.9203 "Hazardous Waste Rule 203") reaches the surface water or groundwater, or A fire, explosion, or other release of hazardous waste or hazardous waste constituent occurs that could threaten human health or the environment. or A release of >1lb (or ≤1lb if not immediately cleaned up) hazardous waste to the environment from a tank system or associated secondary containment system.  Additional hazardous waste reporting requirements under NREPA Part 201 and CERCLA.  NREPA Part 111 requires transporters to comply with 49 CFR 171 and 33 CFR 153.	Immediate: to PEAS (or for Tank systems/secondary containment, within 24 hours of discovery: to DEQ-OWMRP)  and to NRC if threat to human health or environment outside facility by generator, or owner or operator of TSDF, or transporter.	For large quantity generators and TSDF: Within 15 days after incident IF the contingency plan had to be implemented: to DEQ-OWMRP.  For tank/secondary containment systems: Within 30 days of discovery: to DEQ-OWMRP.  For transporters: to US DOT if required per 49 CFR 171.	PEAS: 800-292-4706  NRC 800-424-8802 or online at <a href="http://www.nrc.uscg.mil">www.nrc.uscg.mil</a>  For further information contact DEQ-OWMRP
NREPA 1994 PA 451 Part 121, Liquid Industrial Waste	The liquid industrial waste spill could threaten public health, safety, welfare, or the environment, or has reached surface water or groundwater.  Liquid industrial waste includes nonhazardous brine, by-product, industrial wastewater, leachate, off-spec commercial chemical product, sludge, sanitary or storm sewer clean-out residue, grease trap clean-out residue, spill residue, used oil, or other liquid waste not regulated by other laws.	Immediate: to PEAS and local authorities by generator, transporter, or owner or operator of facility.  Refer to MCL 324.12111(1) for required report elements	Prepare within 30 days after incident. Submit upon request: to DEQ-OWMRP district supervisor.  Refer to MCL 324.12111(1) for required report elements	PEAS: 800-292-4706  For further information contact DEQ-OWMRP
NREPA 1994 PA 451 Part 55, Air Pollution Control	Abnormal condition, start-up, shutdown, or malfunction that results in emissions exceeding permissible (in rule, permit or order) levels of hazardous air pollutants (HAPs) (CAA Sect. 112(b)) or toxic air contaminants (as specified in permit) for > 1 hour, or any air contaminant for > 2 hours.  Written follow-up report only required for emission exceedences lasting > 2 hours.	As soon as possible, but not later than 2 business days after discovery: to DEQ-AQD district office (PEAS after hours) by owner or operator.	Within 10 days after start-up, shutdown, or abnormal condition, malfunction corrected. Or within 30 days of abnormal condition, malfunction discovery- whichever first: to DEQ-AQD district supervisor.	PEAS: 800-292-4706  For further information contact DEQ-AQD

NOTE: If the release is a **THREAT TO HUMAN HEALTH** or **SAFETY**, call 911 or your local fire department.

\*This table covers only those reporting requirements found in rules and regulations that apply in Michigan. Releases might be reportable under multiple regulations.

Additional reporting requirements might be found in permits, licenses, registrations, contingency and pollution prevention plans, and local ordinances.



**Release Notification Requirements in Michigan\***

Act & Regulation	Reporting Criteria	Initial Notification	Written Follow-up Report	Notes
<p>NREPA 1994 PA 451 Part 55, Air Pollution Control (Permit to Install Exemptions)</p>	<p>Emergency venting of natural gas from transmission and distributions systems or field gas from gathering lines in amounts &gt; 1,000,000 standard cubic feet per event.</p> <p>Emergency = unforeseen event that disrupts normal operating conditions and poses a threat to human life, health, property or the environment if not controlled immediately. See R 336.1285(mm), effective 6/20/2008, for details.</p>	<p>Within 24 hours of the event: to PEAS by owner or operator.</p>	<p>Not required.</p>	<p>PEAS: 800-292-4706</p> <p>For further information contact DEQ-AQD</p>
<p>Public Health Code 1978 PA 368 Part 133, Dry Cleaning</p>	<p>Condition or incident presents a threat or hazard to public health or safety.</p>	<p>Immediate: to DEQ-AQD district office (PEAS after hours) by owner or operator.</p>	<p>Within 30 days after incident: To DEQ-AQD district supervisor.</p>	<p>PEAS: 800-292-4706</p> <p>For further information contact DEQ-AQD</p>
<p>NREPA 1994 PA 451 Part 615, Supervisor of Wells (oil and gas production fields)</p>	<p>A loss, spill or release of (1) any amount of brine, crude oil, or oil or gas field waste <i>unless</i> it is less than 42 gallons and occurs while an authorized representative is on site and is completely contained and cleaned up within 1 hour, or (2) any unpermitted amount of natural gas, or (3) chemicals used in association with oil and gas activities.</p>	<p>Within 8 hours after discovery of: 42 gallons or more of brine, crude oil, or oil or gas field waste, or any amount of chemical or natural gas, or; less than 42 gallons if the spill contacts surface water, groundwater, or other environmentally sensitive resources, or is not completely contained and cleaned up within 48 hours: to DEQ-OOGM district office (PEAS after hours) by permittee.</p>	<p>Within 10 days after discovery of loss or spill: to DEQ-OOGM district supervisor on Form EQP-7233 (Rev 1/2012) "Report of Loss or Spill." by permittee</p> <p>Written report only for less than 42 gallons of brine, crude oil, or oil and gas field waste if spill does not contact surface water, groundwater, or other environmentally sensitive resources, and is completely contained and cleaned up within 48 hours.</p>	<p>PEAS: 800-292-4706</p> <p>For further information contact DEQ-OOGM</p>
<p>49 CFR 191 Transportation of Natural and Other Gas by Pipeline</p>	<p>An incident, meaning: (1) Event that involves a release of gas from a pipeline, or of liquefied natural gas, liquefied petroleum gas, refrigerant gas, or gas from an LNG facility that results in: Death or hospitalization; or Property damage ≥ \$50,000; or estimated gas loss of ≥ three million cubic feet. (2) Event that results in emergency shutdown of LNG facility. (3) Significant event per operator.</p> <p>Written Incident reports not required for LNG facilities.</p> <p>Applies to pipeline systems and the transportation of gas through those systems in or affecting interstate or foreign commerce. (See 49 CFR 191.3 for details.)</p>	<p>Earliest practicable moment following discovery: to NRC by operator.</p> <p>Notification must electronic unless there is a safety-related condition to report.</p>	<p>As soon as practicable, and within 30 days after discovery: to US DOT. on DOT Form PHMSA F 7100.1 "Incident Report – Gas Distribution System." or PHMSA F 7100.2 "Incident Report – Gas Transmission and Gathering Systems" or PHMSA F 7100.3 "Incident Report – Liquefied Natural Gas (LNG) Facilities"</p> <p>Supplemental report filed as necessary as soon as practicable.</p>	<p>NRC 800-424-8802 or online at <a href="http://www.nrc.uscg.mil">www.nrc.uscg.mil</a></p> <p>For further information contact US DOT Pipeline Safety Information Center at 202-366-4595 or online</p>

NOTE: If the release is a **THREAT TO HUMAN HEALTH or SAFETY**, call 911 or your local fire department.

\*This table covers only those reporting requirements found in rules and regulations that apply in Michigan. Releases might be reportable under multiple regulations.

**Additional reporting requirements** might be found in **permits, licenses, registrations, contingency and pollution prevention plans, and local ordinances.**



## Release Notification Requirements in Michigan\*

Act & Regulation	Reporting Criteria	Initial Notification	Written Follow-up Report	Notes
<p>49 CFR 195 Transportation of Hazardous Liquids by Pipeline</p>	<p>Release of hazardous liquid (petroleum, petroleum products, or anhydrous ammonia) or carbon dioxide from a pipeline system that results in any of the following: (a) Explosion or fire; (b) Release of <math>\geq 5</math> gallons (except if <math>&lt; 5</math> barrels released due to maintenance and release not otherwise reportable, confined to property, does not pollute water, and cleaned up promptly); (c) Death of any person; (d) Injury requiring hospitalization; or (e) Property damage <math>&gt; \\$50,000</math>. (See 49 CFR 195.50, revised 1/8/02, for details)</p> <p>Applies to pipeline facilities and the transportation of hazardous liquids associated with those facilities in or affecting interstate or foreign commerce. (See 49 CFR 195.1 for details.)</p>	<p>Earliest practicable moment following discovery: to NRC by operator if Release caused: Death or hospitalization; Fire or explosion; Property damage; Water pollution; or was Significant per the operator.</p>	<p>As soon as practicable, and within 30 days after discovery: to US DOT on DOT Form PHMSA F 7000-1 "Accident Report – Hazardous Liquid Pipeline Systems"</p> <p>Supplemental report must be filed within 30 days after operator receives changes or additions to original report.</p>	<p>NRC 800-424-8802 or online at <a href="http://www.nrc.uscg.mil">www.nrc.uscg.mil</a></p> <p>For further information contact US DOT Pipeline Safety Information Center at 202-366-4595 or online</p>
<p>1978 PA 368 Part 135, Radiation Control</p>	<p>For any emergency. Or for incident involving naturally occurring or accelerator produced radioactive material- Immediate notice if: Incident may have caused or threatens to cause: dose to body 25 rems, to skin 150 rems, to extremities 375 rems (per rule 247); 24 hour concentration exceeds 5000 times limits specified in table II of rules 261 to 269; contamination causes operation shut down for 1 week, or property damage <math>&gt; \\$100,000</math>.</p> <p>Notice within 24 hours if: Incident may have caused or threatens to cause: dose to body 5 rems, to skin 30 rems, to extremities 75 rems (per rule 247); 24 hour concentration exceeds 500 times limits specified in table II of rules 261 to 269; contamination causes operation shut down for 1 day, or property damage <math>&gt; \\$1000</math>.</p>	<p>Immediate or within 24 hours (see reporting criteria): to DEQ-OWMRP Radiological Protection Section (PEAS after hours) or MSP Operations Division for all Power Plant related incidents (day or night). by licensee or registrant.</p>	<p>Within 30 days after release: to DEQ-OWMRP Radiological Protection Section by licensee or registrant.</p> <p>Written report also required if level of radiation or concentration of radioactive material in unrestricted area <math>&gt; 10</math> times any applicable limit.</p> <p>See Rule 250 (R 325.5250) for required report content.</p>	<p>DEQ-OWMRP Radiological Protection Section 517-284-5185</p> <p>MSP Operations Div 517-241-8000</p> <p>PEAS: 800-292-4706</p> <p>For further information contact DEQ-OWMRP Radiological Protection Section</p>
<p>10 CFR 20 (Standards for Protection Against Radiation)</p>	<p>For incident involving source, by-product, or special nuclear radioactive material- Immediate notice if: Event that may have caused or threatens to cause: effective dose equivalent to individual 25 rems, lens dose equivalent 75 rems, shallow-dose equivalent to skin or extremities 250 rads; individual could receive 5 times annual limit on intake in 24 hours. OR Any lost, stolen, or missing licensed material in an aggregate quantity equal to or greater than 1000 times the quantity specified in appendix C to part 20 under such circumstances that it appears to the licensee that an exposure could result to persons in unrestricted areas.</p> <p>Notice within 24 hours if: Event that may have caused or threatens to cause: an individual in 24 hours to receive effective dose equivalent <math>&gt; 5</math> rems, lens dose equivalent <math>&gt; 15</math> rems, shallow-dose equivalent to skin or extremities <math>&gt; 50</math> rems; individual could receive <math>&gt; 1</math> times annual limit on intake in 24 hours.</p>	<p>Immediate or within 24 hours (see reporting criteria): to USNRC by USNRC Licensee responsible for the incident.</p>	<p>Within 30 days of incident: to USNRC by licensee.</p> <p>Report content specified in 10 CFR 20.2003</p> <p>Written report also required for occurrences as specified in 10 CFR 20 Section 20.2203 and after the occurrence of any lost, stolen, or missing licensed material becomes known to the licensee, and if at the time the report is filed all licensed material in a quantity greater than 10 times the quantity specified in appendix C to part 20 is still missing.</p>	<p>US Nuclear Regulatory Commission (USNRC) 301-816-5100</p> <p>For further information contact DEQ-OWMRP Radiological Protection Section 517-284-5185</p>

NOTE: If the release is a **THREAT TO HUMAN HEALTH or SAFETY**, call 911 or your local fire department.

\*This table covers only those reporting requirements found in rules and regulations that apply in Michigan. Releases might be reportable under multiple regulations.

Additional reporting requirements might be found in permits, licenses, registrations, contingency and pollution prevention plans, and local ordinances.



## Release Notification Requirements in Michigan\*

Act & Regulation	Reporting Criteria	Initial Notification	Written Follow-up Report	Notes
MIOSHA 1974 PA 154 Section 61, Records & Reports; Notice of Fatalities or Hospitalization	A release that results in a fatality within 30 days of the incident or in-patient hospitalization within 24 hours of the incident.  Note: the OSHA amendment to require employers to report all work-related hospitalizations within 24 hours becomes effective Jan 1, 2015. Michigan intends to adopt the new rules by reference within 6 months of the Sept 18, 2014 FR publication.	Within 8 hours: for a fatality or Within 24 hours: for hospitalization to MIOSHA Hotline by Employer.	Not required.	MIOSHA Fatality or Catastrophe Hotline 800-858-0397  For further information contact LARA-MIOSHA 517-322-1831
TSCA 40 CFR 761.125 (PCBs)	Spills of PCBs at concentrations of 50 ppm or more and subject to decontamination requirements under TSCA that: contaminate surface water, sewers, drinking water supplies, grazing lands or vegetable gardens, or exceed 10 pounds.  (TSCA specifies that these requirements are in addition to any under CWA or CERCLA. e.g. CERCLA requires spills of 1 pound or more to be reported to NRC.)	As soon as possible after discovery, and within 24 hours: to EPA Region 5.	Not required to be submitted. Records of cleanup and certification of decontamination shall be documented.	EPA Region 5 Corrective Action Section 312-886-7890  For further information contact EPA Region 5 Corrective Action Section
SARA Title III Section 313 40 CFR 372 (Toxic chemical release reporting)	Covered facilities as defined in 40 CFR 372 subpart B are subject to toxic chemical release reporting for toxic chemicals and chemical categories listed in 40 CFR 372 subpart D.	Not applicable.	Annually by July 1: to EPA & SERC on EPA's Form R "Toxic Chemical Release Inventory Reporting Form" (EPA Form 9350-1, Rev.10/2011)  Report aggregate releases (permitted & unpermitted)	Michigan SARA Title III Program accepts reports on behalf of SERC  For further information contact Michigan SARA Title III Program 517-284-7272

Table prepared by the Michigan SARA Title III Program in the DEQ

Acronyms used in table:

AQD = Air Quality Division  
 AST = Above Ground Storage Tank  
 CAA = Clean Air Act  
 CAFO = Concentrated Animal Feeding Operation  
 CERCLA = Comprehensive Environmental Response, Compensation and Liability Act of 1980  
 CFR = Code of Federal Regulations  
 CWA = Clean Water Act  
 DEQ = Michigan Department of Environmental Quality  
 DOT = Department of Transportation  
 EHS = Extremely Hazardous Substance  
 EPA = U. S. Environmental Protection Agency  
 EPCRA = Emergency Planning & Community Right-to-Know Act  
 FIFRA = Federal Insecticide, Fungicide, & Rodenticide Act  
 FL/CL = Flammable and combustible liquids  
 FR = Federal Register  
 HAP = Hazardous Air Pollutant

HazMat = Hazardous Materials  
 HB = House Bill  
 LARA = Michigan Department of Licensing & Regulatory Affairs  
 LEPC = Local Emergency Planning Committee  
 LNG = Liquefied Natural Gas  
 LPG = Liquefied Petroleum Gas  
 MCL = Michigan Compiled Laws  
 MDARD = Michigan Department of Agriculture & Rural Development  
 MIOSHA = Michigan Occupational Safety and Health Administration  
 MSP = Michigan Department of State Police  
 NRC = National Response Center (U.S. Coast Guard)  
 NREPA = Natural Resources & Environmental Protection Act  
 ODWMA = Office of Drinking Water & Municipal Assistance  
 OOGM = Office of Oil, Gas, and Minerals  
 OPS = Office of Pipeline Safety (US DOT)  
 OSC = On Scene Coordinator  
 OWMRP = Office of Waste Management & Radiological Protection

PA = Public Act (Michigan)  
 PCB = Polychlorinated biphenyl  
 PEAS = Pollution Emergency Alerting System  
 PHMSA = Pipeline & Hazardous Materials Safety Administration  
 RMP = Risk Management Program  
 RRD = Remediation and Redevelopment Division  
 SARA = Superfund Amendments and Reauthorization Act of 1986  
 SERC = State Emergency Response Commission  
 TRI = Toxic Chemical Release Inventory  
 TSCA = Toxic Substance Control Act  
 TSDF = Treatment, Storage & Disposal Facility  
 US DOT = U.S. Department of Transportation  
 USNRC = U. S. Nuclear Regulatory Commission  
 UST = Underground Storage Tank  
 WRD = Water Resources Division

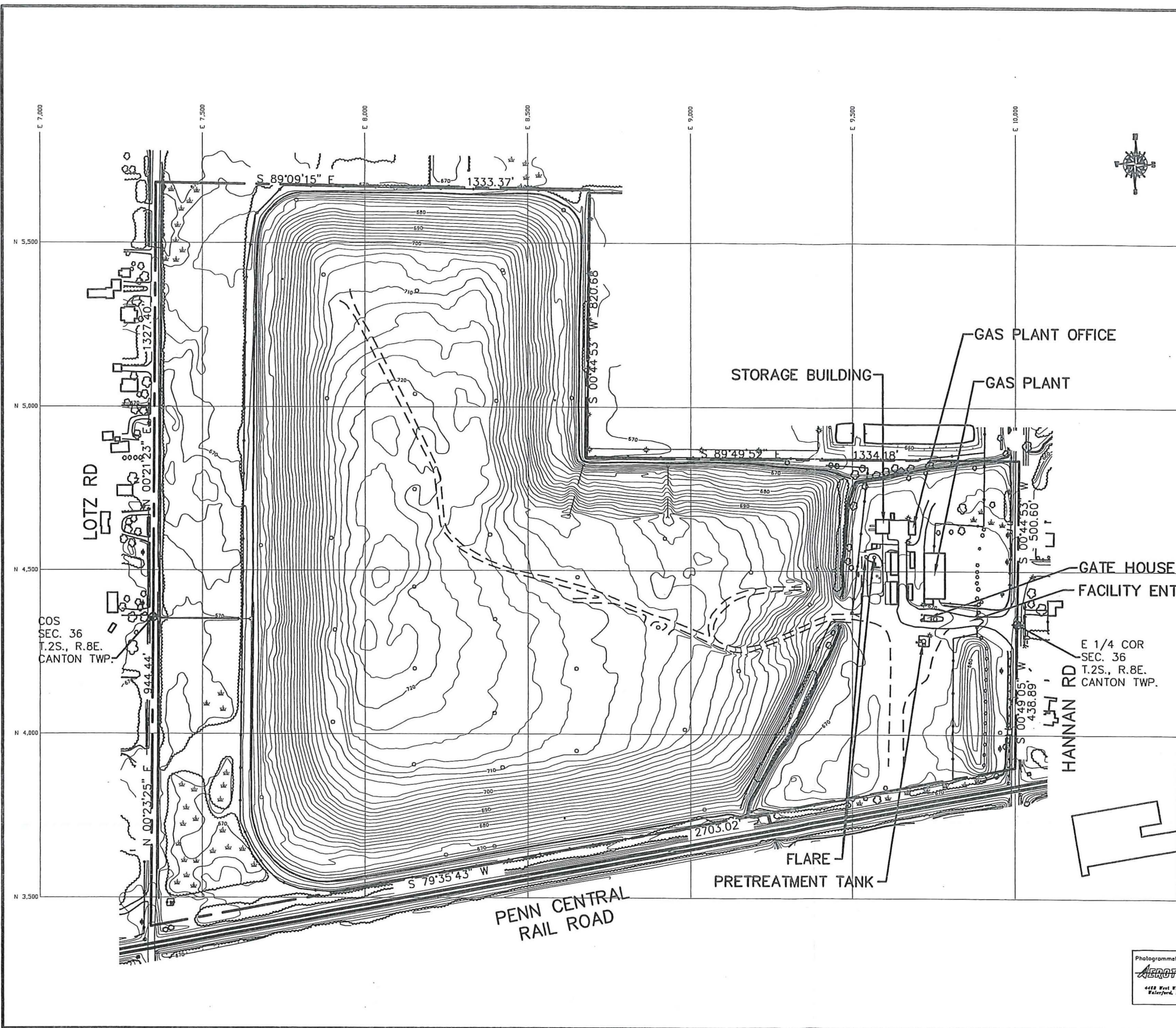
NOTE: If the release is a **THREAT TO HUMAN HEALTH or SAFETY**, call 911 or your local fire department.

\*This table covers only those reporting requirements found in rules and regulations that apply in Michigan. Releases might be reportable under multiple regulations.

Additional reporting requirements might be found in permits, licenses, registrations, contingency and pollution prevention plans, and local ordinances.



## Figures



EQUIPMENT	LOCATION
PERSONAL PROTECTIVE EQUIPMENT	GATE HOUSE
FIRST-AID KIT	GATE HOUSE
STRETCHER	GATE HOUSE
TELEPHONES	GAS PLANT OFFICE
FIRE BLANKET	GATE HOUSE
FIRE HYDRANTS	(1) NEAR WMN ENTRANCE ON HANNAN ROAD; (4) ALONG LOTZ ROAD
A:B:C FIRE EXTINGUISHERS	(1) GATE HOUSE (2) FLARE STATION AT EACH ENTRANCE (1) MAINTENANCE BUILDING (1) GAS PLANT OFFICE (1) GAS RECOVERY FACILITY
OIL ABSORBING BOOM (4-INCH x 6 FEET)	MAINTENANCE BLDG.
GRANULAR ABSORBENT MATERIAL (2 - 50 LB BAGS)	GATE HOUSE AND/OR MAINTENANCE BLDG.
BUCKETS, BROOMS, SHOVELS, GARBAGE BAGS	GATE HOUSE
PORTABLE PUMP (40 GPM RATED)	GATE HOUSE OR MAINTENANCE BLDG.

--- LANDFILL ACCESS ROAD

REMOVED 9/07/18

DATE:	1/29/02
SUR BY:	TPP DP
DRWN BY:	MRD
CHKD BY:	
F.B.:	

**WOODLAND MEADOWS - NORTH**  
 5900 HANNAN RD, WAYNE, MI 48104  
 734-326-0993

**WMW WASTE MANAGEMENT**

**FIGURE 1**  
**LOCATION OF EMERGENCY EQUIPMENT**  
 PART OF THE EAST 1/2 OF SEC. 36,  
 T.2S., R.8E., CANTON TWP., MI

SCALE: 1"=300'  
 PROJECT NO.: 7914.02  
 FILE NAME: 7914.02 FIG1  
 SHEET 1 OF 1

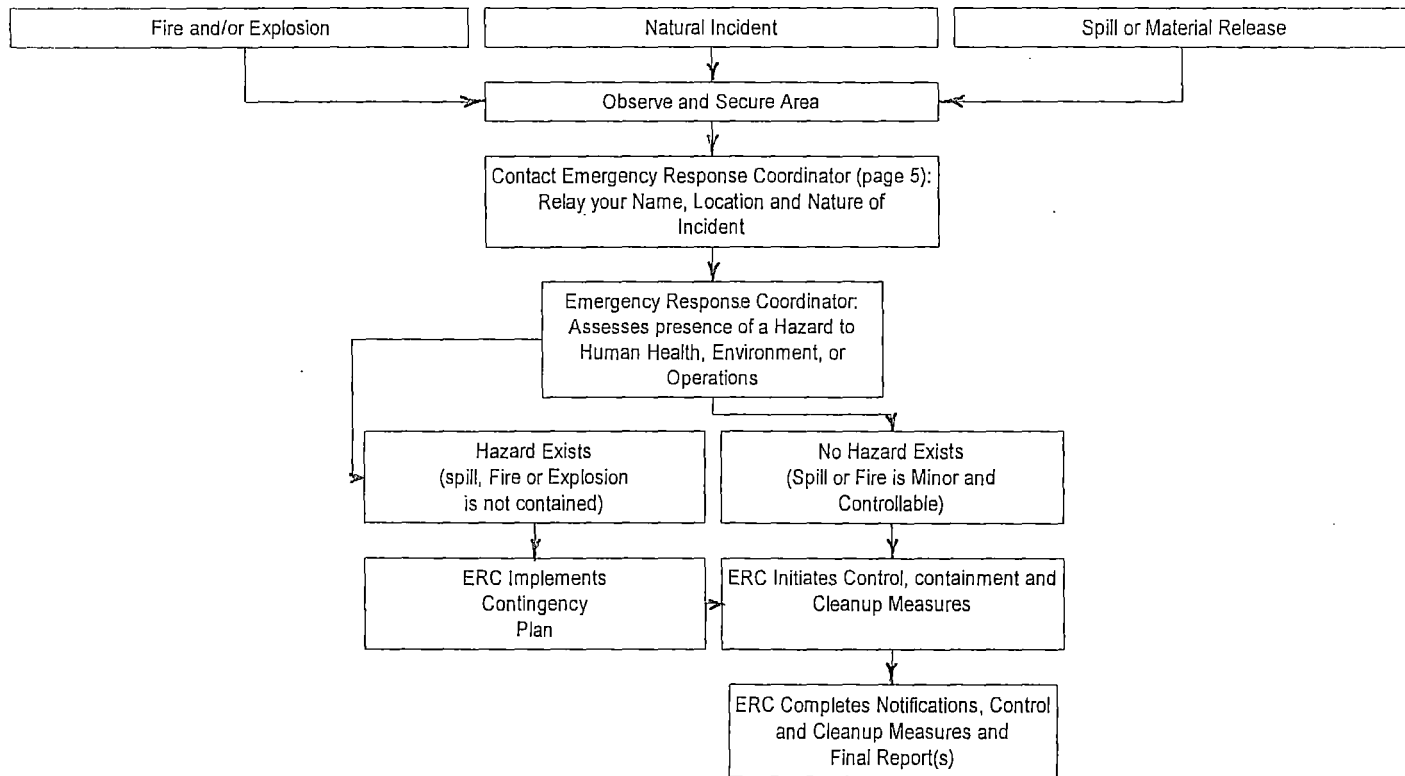
Photogrammetric Mapping By:  
**AEROTRONICS**  
 6418 West Walton Blvd.  
 Waterford, MI 48329

ROGER J. BOVONEY  
 JAMES A. LOPEZ

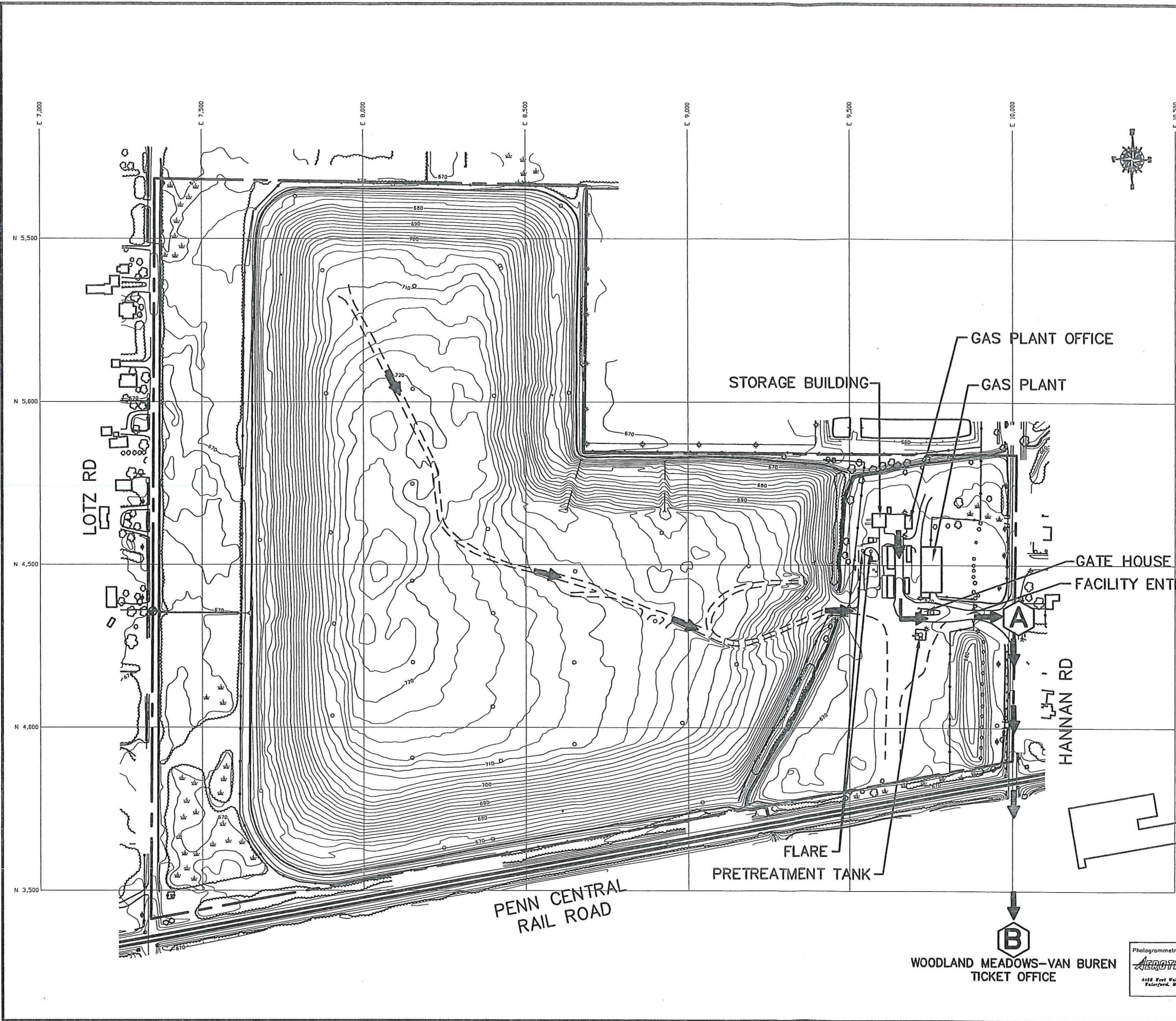
**McNEELY & LINCOLN**  
 Associates, Inc.  
 CIVIL ENGINEERING & LAND SURVEYING  
 PH. (734)432-9777 FAX (734)432-9786  
 37741 PEMBROKE, LIVONIA, MICHIGAN 48152  
 WWW.MNLINC.COM


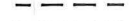
FIGURE 2

### Contingency Plan Implementation Logic Diagram







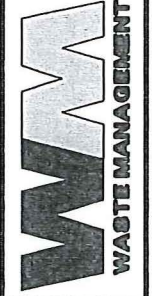
-  REGROUPING POINTS
-  LANDFILL ACCESS ROAD

WOODLAND MEADOWS-VAN BUREN  
TICKET OFFICE

Photogrammetric Mapping By:  
**Aerotronics**  
4418 West Walton Blvd.  
Walleyford, WI 54228  
BOB J. NOVOTNY  
JAMES J. LANE

**McNEELY & LINCOLN**  
Associates, Inc.  
CIVIL ENGINEERING & LAND SURVEYING  
PH. (734)432-9777 FAX (734)432-9786  
37741 PEMBROKE, LIVONIA, MICHIGAN 48152  
WWW.MNLINC.COM

SCALE: 1"=300'	PROJECT NO.: 7914.02	REVISED 9/07/18
FILE NAME: 7914.02 FIG3	FIGURE 3 EVACUATION ROUTES	DATE: 1/29/02
SHEET 1 OF 1	PART OF THE EAST 1/2 OF SEC. 36, T.2S., R.8E., CANTON TWP., MI	SUR BY: WOODLAND MEADOWS - NORTH
		DRWN BY: 5900 HANNAN RD, WAYNE, MI 48184
		CHKD BY: MRD
		F.B.: 734-326-0993



## Appendices

APPENDIX A  
INCIDENT REPORT FORM

INCIDENT CHRONOLOGICAL LOG  
FOR  
WOODLAND MEADOWS LANDFILL

Incident Number	Date	Incident Description	Manifest Number
1	<u>3/1/91</u>	<u>F039 Leachate Spill</u>	<u>See File</u>
2	<u>8/17/93</u>	<u>F039 Leachate Spill</u>	<u>See File</u>
3	<u>8/29/97</u>	<u>F039 Leachate Spill</u>	<u>See File</u>
4	<u>11/23/98</u>	<u>F039 Leachate Spill</u>	<u>See File</u>
5	<u>3/28/03</u>	<u>F039 Leachate Spill</u>	<u>See File</u>
6	<u>12/4/07</u>	<u>F039 Leachate Spill</u>	<u>See File</u>
7	<u>5/6/08</u>	<u>F039 Leachate Spill</u>	<u>See File</u>
8	<u>1/10/14</u>	<u>F039 Leachate Spill</u>	<u>See File</u>
9	<u> </u>	<u> </u>	<u> </u>
10	<u> </u>	<u> </u>	<u> </u>
11	<u> </u>	<u> </u>	<u> </u>
12	<u> </u>	<u> </u>	<u> </u>
13	<u> </u>	<u> </u>	<u> </u>
14	<u> </u>	<u> </u>	<u> </u>
15	<u> </u>	<u> </u>	<u> </u>
16	<u> </u>	<u> </u>	<u> </u>
17	<u> </u>	<u> </u>	<u> </u>
18	<u> </u>	<u> </u>	<u> </u>
19	<u> </u>	<u> </u>	<u> </u>
20	<u> </u>	<u> </u>	<u> </u>

RCRA INCIDENT REPORT FORM PROCEDURE  
FOR  
WOODLAND MEADOWS NORTH LANDFILL  
CANTON, MICHIGAN

GENERAL INFORMATION

This procedure will outline the proper use of the Incident Report Form. This form is intended to aid employees in the accurate recording and reporting of incidents, as well as document the proper handling and disposal of spilled material and cleanup debris.

PROGRAM CONTENT

Actions to be followed for a particular incident and proper safety and operating procedures are described in other documents such as the site Contingency Plan and the Region Safety Manual. These procedures will not be described here.

Any employee discovering an incident (fire, explosion, spill, injury/accident or release), should immediately notify the Site Manager or Emergency Response Coordinator (ERC) as well as personnel in the affected area who may be in danger. The ERC will direct all further activities.

As soon as possible, the Site Manager or ERC should collect the information identified on the attached Incident Report Form. The form should be fully completed according to its instructions. Section 12 can not be completed until any spilled material is disposed off-site.

DISTRIBUTION

Once the information is recorded, the completed form should be distributed as indicated on the form. The original form should be placed in the site's RCRA Operating Record and filed in chronological order. A copy should also be placed in the site's manifest file if any material is shipped off-site from a spill clean-up.

Attachment: Incident Report Form

INCIDENT REPORT FORM NO. \_\_\_\_\_

Date and Time Detected: \_\_\_\_\_ By: \_\_\_\_\_

Date and Time Reported to ERC: \_\_\_\_\_ By: \_\_\_\_\_

Date and Time Terminated: \_\_\_\_\_ By: \_\_\_\_\_

1. FACILITY: \_\_\_\_\_  
\_\_\_\_\_  
\_\_\_\_\_  
\_\_\_\_\_

2. TELEPHONE NUMBER OF FACILITY: \_\_\_\_\_

3. LOCATION OF RELEASE: \_\_\_\_\_  
\_\_\_\_\_

4. TYPE OF SUBSTANCE RELEASED:

- |                                 |                                 |
|---------------------------------|---------------------------------|
| _____ CAA Section 11 2          | _____ RCRA Listed Waste         |
| _____ CAA Section 307(a)        | _____ RCRA Characteristic Waste |
| _____ CWA Section 311 (b)(2)(a) |                                 |

5. NAME OF SUBSTANCE RELEASED: \_\_\_\_\_

6. AMOUNT RELEASED: \_\_\_\_\_

7. WAS THE RELEASE TO: \_\_\_\_\_ Air \_\_\_\_\_ Surface Water \_\_\_\_\_ Groundwater \_\_\_\_\_ Land

8. WAS THE RELEASE: \_\_\_\_\_ Continuous \_\_\_\_\_ Episodic

9. CAUSE OF RELEASE: \_\_\_\_\_  
\_\_\_\_\_

10. CORRECTIVE ACTION TAKEN: \_\_\_\_\_  
\_\_\_\_\_  
\_\_\_\_\_

11. CORRECTIVE ACTION TAKEN OR TO BE TAKEN TO PREVENT FUTURE INCIDENTS:  
\_\_\_\_\_  
\_\_\_\_\_  
\_\_\_\_\_

12. CLEANUP PROCEDURE (IF NECESSARY)

a. LIQUID MATERIAL (e.g., gas condensate, leachate, etc.)

1. Treatment Method (if any): \_\_\_\_\_  
\_\_\_\_\_

2. Removal Method (if necessary): \_\_\_\_\_  
\_\_\_\_\_

3. Transferred To: Container Type \_\_\_\_\_  
Volume \_\_\_\_\_

b. SOLID MATERIAL (e.g., used absorbent, soil, rags, gloves, coveralls, etc.)

1. Treatment Method (If any): \_\_\_\_\_  
\_\_\_\_\_

2. Removal Method (if necessary): \_\_\_\_\_  
\_\_\_\_\_

3. Transferred To: Container Type \_\_\_\_\_  
Volume \_\_\_\_\_

c. DISPOSED AT: \_\_\_\_\_  
USEPA ID. NO. (if app.): \_\_\_\_\_  
DATE(s) OF DISPOSAL: \_\_\_\_\_  
MANIFEST NO(s): \_\_\_\_\_

13. EMERGENCY RESPONSE CONTACTS:

a. ERC NOTIFIED? \_\_\_\_\_ YES \_\_\_\_\_ NO

_____	Paul Mazanec	Home (734) 664-8270	Cell (734) 231-8162
_____	Steve Forgacs	Cell (734) 231-8163	

14. OUTSIDE AGENCIES CONTACTED:

<u>Incident Type</u>	<u>Date / Time</u>	<u>Agency</u>	<u>Phone</u>	<u>Contact</u>	<u>Comments</u>
a) Spill/Release	_____	National Response Center (NRC)	(800) 424-8802	_____	_____
b) Spill/Release	_____	Michigan Pollution Emergency Alerting System (MPEAS)	(800) 292-4706	_____	_____
c) Spill/Release	_____	MDEQ - Waste Management Division	(586) 753-3840	_____	_____
d) Spill/Release	_____	Wayne County Department of Environment	(734) 326-3936	_____	_____
e) Fire/Explosion	_____	Canton Fire / Rescue	911	_____	_____
f) Fire/Explosion	_____	Canton Police	911	_____	_____
g) Injury/Rescue	_____	Annapolis Hospital	(734) 467-4040	_____	_____
h) Spill/Cleanup	_____	EQ Industrial Svcs.	(888) 640-3777	_____	_____
	_____	K&D Industrial Svcs.	(734) 729-3350	_____	_____
	_____	Other _____	_____	_____	_____
i) Disaster	_____	Wayne County Office of Emergency Management	(734) 942-5289	_____	_____

***It is extremely important to document reports to regulatory agencies. Always record the date and time, name of the person you spoke with, and any confirmation or report verification number provided to you by the agency.***

Be prepared to report the following when requesting emergency medical assistance:

- This is a request for emergency medical assistance needed by Waste Management / Woodland Meadows North Landfill located on Hannan Road, 1/4 mile north of Van Born Road and 3/4 mile south of U.S. 12. Specify that the entrance is north of the railroad tracks.
- The nature of the emergency.
- An estimate of the numbers, types and conditions of casualties.
- The existence of hazardous conditions or special risks.
- The name, location and telephone number of caller.



14. EXTENT OF INJURIES (if any): \_\_\_\_\_  
\_\_\_\_\_  
\_\_\_\_\_

15. WMI PERSONNEL CONTACTED:

- Jack Rowe      Sr. District Manager      Mobile (313) 920-1617
- Joe Read      Operations Manager      Mobile (248) 240- 6936
- Steve Forgacs      Compliance Manager      Office (734) 326-8252      Mobile (734) 231-8163
- Rich Paajanen      Engineering Manager      Office (248) 391-0990      Mobile (248) 640-8292
- Paul Mazanec      Site Engineer      Office (734) 326-8230      Mobile (734) 231-8162
- Other \_\_\_\_\_

COMPLETED BY:

\_\_\_\_\_  
Signature

\_\_\_\_\_  
Date

DISTRIBUTION:

- Site Operating Record
- Site Manager
- District Manager
- Manifest File

ATTACHMENTS: \_\_\_\_\_  
\_\_\_\_\_  
\_\_\_\_\_

**APPENDIX B**

EMERGENCY RESPONSE GUIDES (ERG)

**POTENTIAL HAZARDS****FIRE OR EXPLOSION**

- Some may burn but none ignite readily.
- Containers may explode when heated.
- Some may be transported hot.
- For UN3508, be aware of possible short circuiting as this product is transported in a charged state.

**HEALTH**

- Inhalation of material may be harmful.
- Contact may cause burns to skin and eyes.
- Inhalation of Asbestos dust may have a damaging effect on the lungs.
- Fire may produce irritating, corrosive and/or toxic gases.
- Some liquids produce vapors that may cause dizziness or suffocation.
- Runoff from fire control may cause pollution.

**PUBLIC SAFETY**

- **CALL EMERGENCY RESPONSE Telephone Number on Shipping Paper first. If Shipping Paper not available or no answer, refer to appropriate telephone number listed on the inside back cover.**
- As an immediate precautionary measure, isolate spill or leak area in all directions for at least 50 meters (150 feet) for liquids and at least 25 meters (75 feet) for solids.
- Keep unauthorized personnel away.
- Stay upwind, uphill and/or upstream.

**PROTECTIVE CLOTHING**

- Wear positive pressure self-contained breathing apparatus (SCBA).
- Structural firefighters' protective clothing will only provide limited protection.

**EVACUATION****Spill**

- See **Table 1 - Initial Isolation and Protective Action Distances** for highlighted materials. For non-highlighted materials, increase, in the downwind direction, as necessary, the isolation distance shown under "PUBLIC SAFETY".

**Fire**

- If tank, rail car or tank truck is involved in a fire, ISOLATE for 800 meters (1/2 mile) in all directions; also, consider initial evacuation for 800 meters (1/2 mile) in all directions.

## EMERGENCY RESPONSE

**FIRE****Small Fire**

- Dry chemical, CO<sub>2</sub>, water spray or regular foam.

**Large Fire**

- Water spray, fog or regular foam.
- Do not scatter spilled material with high-pressure water streams.
- Move containers from fire area if you can do it without risk.
- Dike fire-control water for later disposal.

**Fire involving Tanks**

- Cool containers with flooding quantities of water until well after fire is out.
- Withdraw immediately in case of rising sound from venting safety devices or discoloration of tank.
- ALWAYS stay away from tanks engulfed in fire.

**SPILL OR LEAK**

- Do not touch or walk through spilled material.
- Stop leak if you can do it without risk.
- Prevent dust cloud.
- Avoid inhalation of asbestos dust.

**Small Dry Spill**

- With clean shovel, place material into clean, dry container and cover loosely; move containers from spill area.

**Small Spill**

- Pick up with sand or other non-combustible absorbent material and place into containers for later disposal.

**Large Spill**

- Dike far ahead of liquid spill for later disposal.
- Cover powder spill with plastic sheet or tarp to minimize spreading.
- Prevent entry into waterways, sewers, basements or confined areas.

**FIRST AID**

- Ensure that medical personnel are aware of the material(s) involved and take precautions to protect themselves.
- Move victim to fresh air.
- Call 911 or emergency medical service.
- Give artificial respiration if victim is not breathing.
- Administer oxygen if breathing is difficult.
- Remove and isolate contaminated clothing and shoes.
- In case of contact with substance, immediately flush skin or eyes with running water for at least 20 minutes.

APPENDIX C

AGENCY PLAN TRANSMITTAL FORM

TRANSMITTAL FORM FOR AGENCIES

(to be submitted in duplicate)

To: \_\_\_\_\_ Date: \_\_\_\_\_

Attached is a copy of the Contingency Plan for the Woodland Meadows North Landfill facility in, Canton, Michigan. This Plan meets the requirements for a written emergency response plan under 40 CFR Part 264, Subpart D of the Federal Hazardous Waste Regulations (RCRA Contingency Plan).

40 CFR 264.53 states: " A copy of the Contingency Plan and all revisions must be submitted to all local police departments, fire departments, hospitals and State and local emergency response teams that may be called upon to provide emergency services."

Please review this Plan to determine whether your agency is in agreement with the portions of the Plan the affect your duties and/or responsibilities. After reviewing this Plan, please check the appropriate box, sign and return one copy of this form. Your cooperation in this matter is truly appreciated. If you have any questions, please contact:

To be completed by agency:

We have reviewed your Environmental Emergency Response Plan and:

- Are in agreement with the content
- We are not in full agreement with the content because of the following:

- 1. \_\_\_\_\_
- 2. \_\_\_\_\_
- 3. \_\_\_\_\_

NAME: \_\_\_\_\_

AGENCY: \_\_\_\_\_

DATE: \_\_\_\_\_

Please return one completed copy to:

Woodland Meadows  
5900 Hannan Road  
Wayne, MI 48184  
Attn: Site Engineer

**APPENDIX D**

CONTINGENCY PLAN DISTRIBUTION

CONTINGENCY PLAN DISTRIBUTION

1. Fire Departments

Canton Township Fire Department  
1150 S. Canton Center Road  
Canton, MI 48188  
(734) 397-3000

City of Wayne Fire Department  
3300 South Wayne Road  
Wayne, MI 48184  
(734) 722-1111

Romulus Fire Department  
11111 S. Wayne Road  
Romulus, MI 48174  
(734) 941-8585

2. Police Departments

Canton Township Police Department  
1150 S. Canton Center Road  
Canton, MI 48188  
(734) 397-3000

3. Hospitals

Annapolis Hospital  
33155 Annapolis St  
Wayne, MI 48184  
(734) 467-4000

4. Local Emergency Planning Commission

Wayne County Office of Emergency Management  
10250 Middlebelt Road  
Romulus, MI 48242  
(734) 942-5289