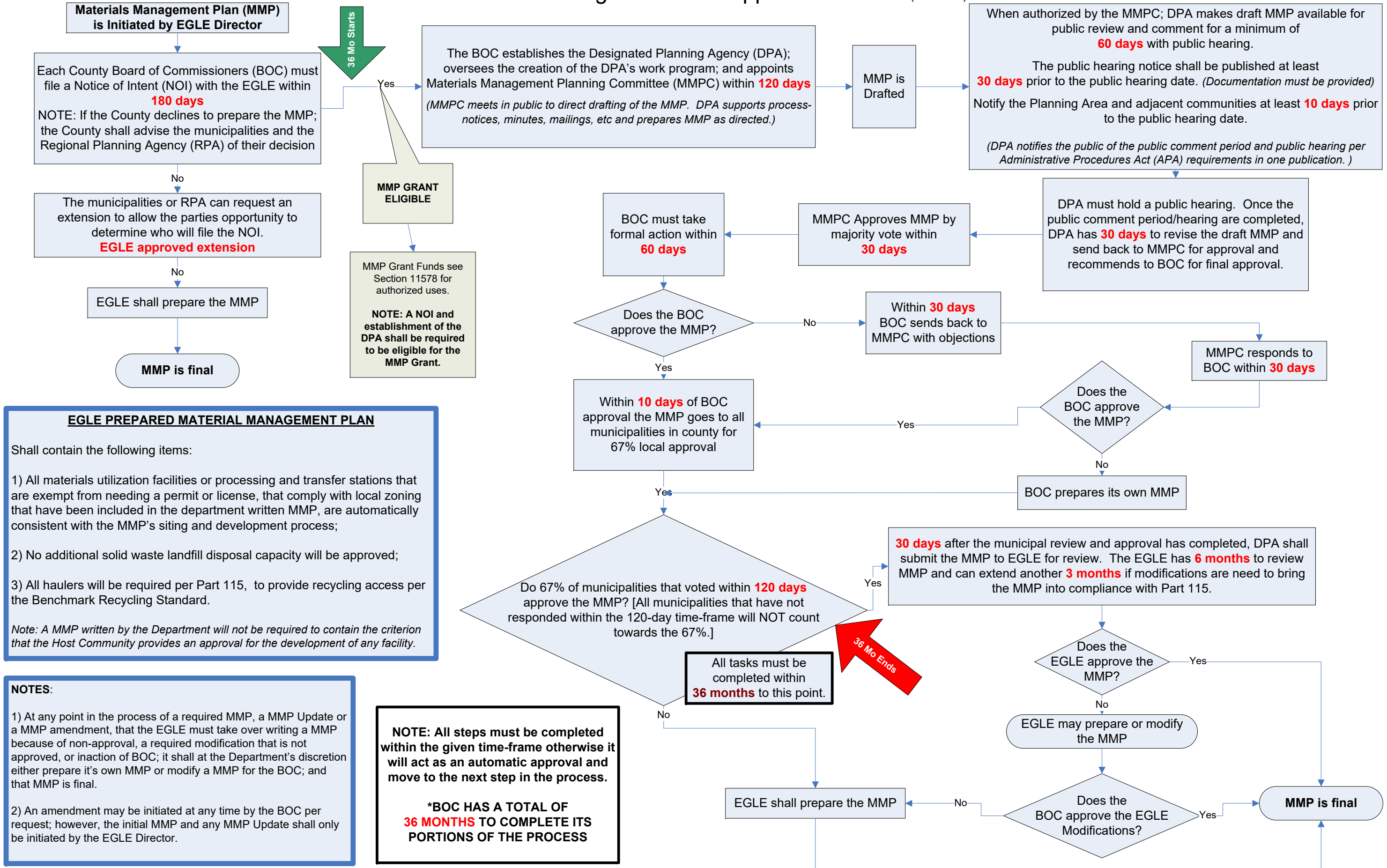


DRAFT Materials Management Plan Approval Process (03/05/18)



EGLE PREPARED MATERIAL MANAGEMENT PLAN

Shall contain the following items:

- 1) All materials utilization facilities or processing and transfer stations that are exempt from needing a permit or license, that comply with local zoning that have been included in the department written MMP, are automatically consistent with the MMP's siting and development process;
- 2) No additional solid waste landfill disposal capacity will be approved;
- 3) All haulers will be required per Part 115, to provide recycling access per the Benchmark Recycling Standard.

Note: A MMP written by the Department will not be required to contain the criterion that the Host Community provides an approval for the development of any facility.

NOTES:

- 1) At any point in the process of a required MMP, a MMP Update or a MMP amendment, that the EGLE must take over writing a MMP because of non-approval, a required modification that is not approved, or inaction of BOC; it shall at the Department's discretion either prepare it's own MMP or modify a MMP for the BOC; and that MMP is final.
- 2) An amendment may be initiated at any time by the BOC per request; however, the initial MMP and any MMP Update shall only be initiated by the EGLE Director.

NOTE: All steps must be completed within the given time-frame otherwise it will act as an automatic approval and move to the next step in the process.

***BOC HAS A TOTAL OF 36 MONTHS TO COMPLETE ITS PORTIONS OF THE PROCESS**