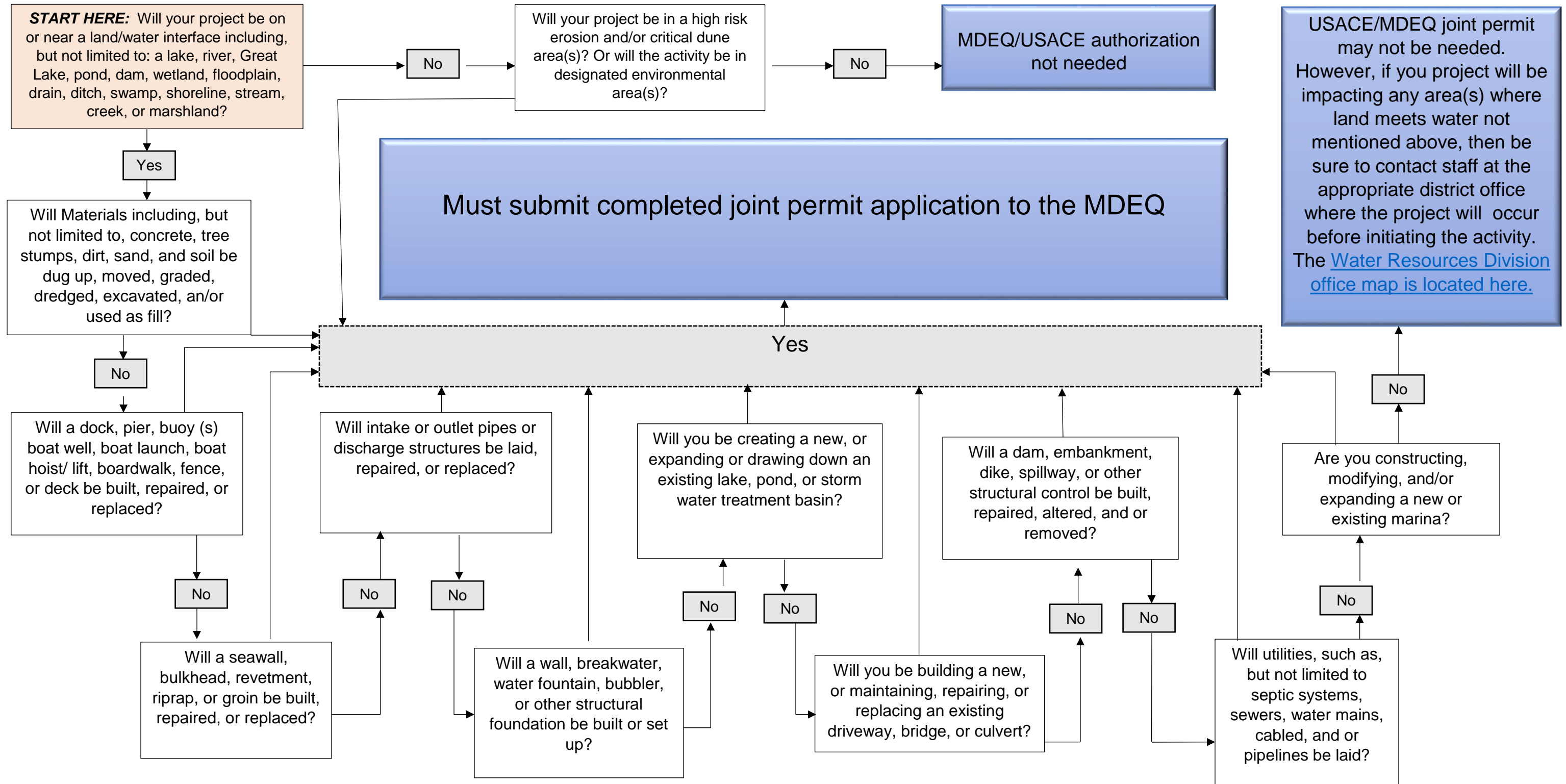




Does my Project Require a Land and Water Interface Permit?



For information or assistance on this publication, please contact the (name of division/office, program), through the DEQ Environmental Assistance Center at 800-662-9278. This publication is available in alternative formats upon request.

This publication is intended for guidance only and may be impacted by changes in legislation, rules, policies, and procedures adopted after the date of publication. Although this publication makes every effort to teach users how to meet applicable compliance obligations, use of this publication does not constitute the rendering of legal advice.