



Battle Creek Watershed Protection

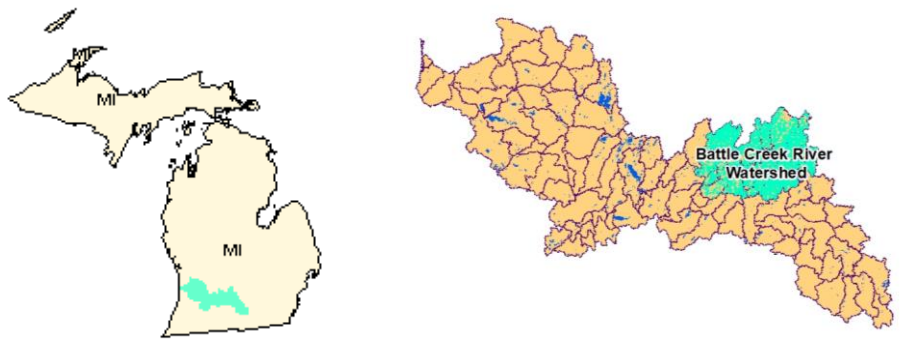
September 1, 2016 through August 31, 2018

The goal of this grant was to conserve land in a priority subwatershed of the Battle Creek River Watershed and to conduct outreach activities to high priority landowners and decision makers. Primary water quality concerns in the watershed are increasing urbanization and land management activities that cause sediment and nutrient loading. With these grant funds we were able to conserve the 476-acre Big Marsh Farm property which includes 140 acres of wetlands, 336 acres of adjacent upland and over 8,600 linear feet of critical riparian area. This property is directly adjacent to Michigan Audubon's 898-acre Baker Sanctuary further protecting this important migratory bird area and creating a now 1,374-acre block of conserved land. The Big Marsh Farm Property is in the Ackley Creek sub-watershed of the Battle Creek River Watershed, which flows into the Kalamazoo River, which then flows into Lake Michigan in the town of Saugatuck.

Grant Amount: \$530,800

Match Funds: \$422,700

Total Amount: \$953,500



Best Management Practices:

- 1 permanent conservation easement

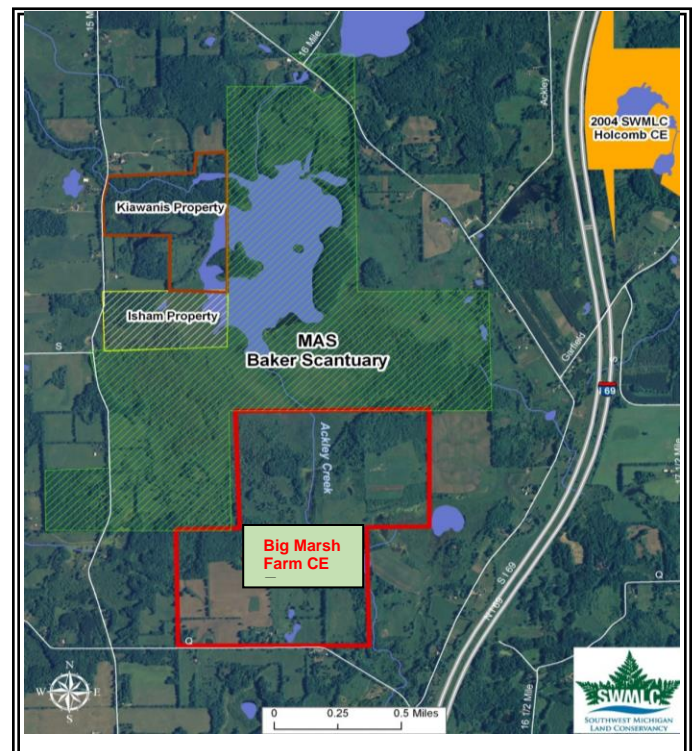
Annual Load Reductions:

- 5.4 tons of sediment per year
- 129 lbs of phosphorus per year
- 1,380 lbs of nitrogen per year

Kalamazoo River Watershed

Partners involved:

- Southwest Michigan Land Conservancy (SWMLC)
- MI Department of Environmental Quality (MDEQ)
- Kalamazoo River Watershed Council (KRWC)
- Larry and Jerrilyn Holcomb, landowners
- Michigan Audubon Society (MAS)
- Eaton, Calhoun, & Barry Conservation Districts
- Mid-Michigan Land Conservancy
- Calhoun County Water Resource Commissioner



I&E Activities:

- Multiple mailings to priority landowners in the Battle Creek Watershed
- Two public tours of the Big Marsh Farm Property
- Two seminars for landowners to learn about water resource protection and land conservation options
- Multiple press releases, newsletter articles and web communication by SWMLC and KRWC
- Four presentations to local government decision makers



Photos of the Big Marsh Farm Conservation Easement Property



This photo is looking north into the Big Marsh and the Audubon Sanctuary in the distance.



A photo of one of the ponds on the Big Marsh Farm Property.



Another view looking north onto the conserved Big Marsh from the forested hillside.