

ASSETS

	Current Statement Date			4 December 31 Prior Year Net Admitted Assets
	1 Assets	2 Nonadmitted Assets	3 Net Admitted Assets (Cols. 1 - 2)	
1. Bonds	150,957		150,957	151,556
2. Stocks:				
2.1 Preferred stocks				
2.2 Common stocks				
3. Mortgage loans on real estate:				
3.1 First liens				
3.2 Other than first liens				
4. Real estate:				
4.1 Properties occupied by the company (less \$.....0 encumbrances)				
4.2 Properties held for the production of income (less \$.....0 encumbrances)				
4.3 Properties held for sale (less \$.....0 encumbrances)				
5. Cash (\$.....1,000,031), cash equivalents (\$.....0) and short-term investments (\$.....349,896)	1,349,927		1,349,927	1,349,372
6. Contract loans (including \$.....0 premium notes)				
7. Derivatives				
8. Other invested assets				
9. Receivables for securities				
10. Securities lending reinvested collateral assets				
11. Aggregate write-ins for invested assets				
12. Subtotals, cash and invested assets (Lines 1 to 11)	1,500,884		1,500,884	1,500,928
13. Title plants less \$.....0 charged off (for Title insurers only)				
14. Investment income due and accrued				375
15. Premiums and considerations:				
15.1 Uncollected premiums and agents' balances in the course of collection				
15.2 Deferred premiums, agents' balances and installments booked but deferred and not yet due (including \$.....0 earned but unbilled premiums)				
15.3 Accrued retrospective premiums (\$.....0) and contracts subject to redetermination (\$.....0)				
16. Reinsurance:				
16.1 Amounts recoverable from reinsurers				
16.2 Funds held by or deposited with reinsured companies				
16.3 Other amounts receivable under reinsurance contracts				
17. Amounts receivable relating to uninsured plans				
18.1 Current federal and foreign income tax recoverable and interest thereon				
18.2 Net deferred tax asset				
19. Guaranty funds receivable or on deposit				
20. Electronic data processing equipment and software				
21. Furniture and equipment, including health care delivery assets (\$.....0)				
22. Net adjustments in assets and liabilities due to foreign exchange rates				
23. Receivables from parent, subsidiaries and affiliates				
24. Health care (\$.....0) and other amounts receivable				
25. Aggregate write-ins for other-than-invested assets				
26. TOTAL assets excluding Separate Accounts, Segregated Accounts and Protected Cell Accounts (Lines 12 to 25)	1,500,884		1,500,884	1,501,303
27. From Separate Accounts, Segregated Accounts and Protected Cell Accounts				
28. TOTAL (Lines 26 and 27)	1,500,884		1,500,884	1,501,303
DETAILS OF WRITE-INS				
1101.				
1102.				
1103.				
1198. Summary of remaining write-ins for Line 11 from overflow page				
1199. TOTALS (Lines 1101 through 1103 plus 1198) (Line 11 above)				
2501.				
2502.				
2503.				
2598. Summary of remaining write-ins for Line 25 from overflow page				
2599. TOTALS (Lines 2501 through 2503 plus 2598) (Line 25 above)				

LIABILITIES, CAPITAL AND SURPLUS

	Current Period			Prior Year
	1 Covered	2 Uncovered	3 Total	4 Total
1. Claims unpaid (less \$.....0 reinsurance ceded)				
2. Accrued medical incentive pool and bonus amounts				
3. Unpaid claims adjustment expenses				
4. Aggregate health policy reserves, including the liability of \$.....0 for medical loss ratio rebate per the Public Health Service Act				
5. Aggregate life policy reserves				
6. Property/casualty unearned premium reserve				
7. Aggregate health claim reserves				
8. Premiums received in advance				
9. General expenses due or accrued				
10.1 Current federal and foreign income tax payable and interest thereon (including \$.....0 on realized gains (losses))	186		186	274
10.2 Net deferred tax liability				
11. Ceded reinsurance premiums payable				
12. Amounts withheld or retained for the account of others				
13. Remittances and items not allocated				
14. Borrowed money (including \$.....0 current) and interest thereon \$.....0 (including \$.....0 current)				
15. Amounts due to parent, subsidiaries and affiliates				
16. Derivatives				
17. Payable for securities				
18. Payable for securities lending				
19. Funds held under reinsurance treaties with (\$.....0 authorized reinsurers, \$.....0 unauthorized reinsurers and \$.....0 certified reinsurers)				
20. Reinsurance in unauthorized and certified (\$.....0) companies				
21. Net adjustments in assets and liabilities due to foreign exchange rates				
22. Liability for amounts held under uninsured plans				
23. Aggregate write-ins for other liabilities (including \$.....0 current)				
24. Total liabilities (Lines 1 to 23)	186		186	274
25. Aggregate write-ins for special surplus funds	X X X	X X X		
26. Common capital stock	X X X	X X X		
27. Preferred capital stock	X X X	X X X		
28. Gross paid in and contributed surplus	X X X	X X X	1,500,000	1,500,000
29. Surplus notes	X X X	X X X		
30. Aggregate write-ins for other-than-special surplus funds	X X X	X X X		
31. Unassigned funds (surplus)	X X X	X X X	698	1,029
32. Less treasury stock, at cost:				
32.10 shares common (value included in Line 26 \$.....0)	X X X	X X X		
32.20 shares preferred (value included in Line 27 \$.....0)	X X X	X X X		
33. Total capital and surplus (Lines 25 to 31 minus Line 32)	X X X	X X X	1,500,698	1,501,029
34. Total Liabilities, capital and surplus (Lines 24 and 33)	X X X	X X X	1,500,884	1,501,303
DETAILS OF WRITE-INS				
2301.				
2302.				
2303.				
2398. Summary of remaining write-ins for Line 23 from overflow page				
2399. TOTALS (Lines 2301 through 2303 plus 2398) (Line 23 above)				
2501.	X X X	X X X		
2502.	X X X	X X X		
2503.	X X X	X X X		
2598. Summary of remaining write-ins for Line 25 from overflow page	X X X	X X X		
2599. TOTALS (Lines 2501 through 2503 plus 2598) (Line 25 above)	X X X	X X X		
3001.	X X X	X X X		
3002.	X X X	X X X		
3003.	X X X	X X X		
3098. Summary of remaining write-ins for Line 30 from overflow page	X X X	X X X		
3099. TOTALS (Lines 3001 through 3003 plus 3098) (Line 30 above)	X X X	X X X		

STATEMENT OF REVENUE AND EXPENSES

	Current Year To Date		Prior Year To Date	Prior Year Ended December 31
	1 Uncovered	2 Total	3 Total	4 Total
1. Member Months	X X X			
2. Net premium income (including \$.....0 non-health premium income)	X X X			
3. Change in unearned premium reserves and reserves for rate credits	X X X			
4. Fee-for-service (net of \$.....0 medical expenses)	X X X			
5. Risk revenue	X X X			
6. Aggregate write-ins for other health care related revenues	X X X			
7. Aggregate write-ins for other non-health revenues	X X X			
8. Total revenues (Lines 2 to 7)	X X X			
Hospital and Medical:				
9. Hospital/medical benefits				
10. Other professional services				
11. Outside referrals				
12. Emergency room and out-of-area				
13. Prescription drugs				
14. Aggregate write-ins for other hospital and medical				
15. Incentive pool, withhold adjustments and bonus amounts				
16. Subtotal (Lines 9 to 15)				
Less:				
17. Net reinsurance recoveries				
18. Total hospital and medical (Lines 16 minus 17)				
19. Non-health claims (net)				
20. Claims adjustment expenses, including \$.....0 cost containment expenses				
21. General administrative expenses				
22. Increase in reserves for life and accident and health contracts (including \$.....0 increase in reserves for life only)				
23. Total underwriting deductions (Lines 18 through 22)				
24. Net underwriting gain or (loss) (Lines 8 minus 23)	X X X			
25. Net investment income earned		(270)		1,303
26. Net realized capital gains (losses) less capital gains tax of \$.....0				
27. Net investment gains or (losses) (Lines 25 plus 26)		(270)		1,303
28. Net gain or (loss) from agents' or premium balances charged off [(amount recovered \$.....0) (amount charged off \$.....0)]				
29. Aggregate write-ins for other income or expenses				
30. Net income or (loss) after capital gains tax and before all other federal income taxes (Lines 24 plus 27 plus 28 plus 29)	X X X	(270)		1,303
31. Federal and foreign income taxes incurred	X X X	60		274
32. Net income (loss) (Lines 30 minus 31)	X X X	(330)		1,029
DETAILS OF WRITE-INS				
0601.	X X X			
0602.	X X X			
0603.	X X X			
0698. Summary of remaining write-ins for Line 6 from overflow page	X X X			
0699. TOTALS (Lines 0601 through 0603 plus 0698) (Line 6 above)	X X X			
0701.	X X X			
0702.	X X X			
0703.	X X X			
0798. Summary of remaining write-ins for Line 7 from overflow page	X X X			
0799. TOTALS (Lines 0701 through 0703 plus 0798) (Line 7 above)	X X X			
1401.				
1402.				
1403.				
1498. Summary of remaining write-ins for Line 14 from overflow page				
1499. TOTALS (Lines 1401 through 1403 plus 1498) (Line 14 above)				
2901.				
2902.				
2903.				
2998. Summary of remaining write-ins for Line 29 from overflow page				
2999. TOTALS (Lines 2901 through 2903 plus 2998) (Line 29 above)				

STATEMENT OF REVENUE AND EXPENSES (Continued)

	1	2	3
	Current Year To Date	Prior Year To Date	Prior Year Ended December 31
CAPITAL & SURPLUS ACCOUNT			
33. Capital and surplus prior reporting year	1,501,029		
34. Net income or (loss) from Line 32	(330)		1,029
35. Change in valuation basis of aggregate policy and claim reserves			
36. Change in net unrealized capital gains (losses) less capital gains tax of \$.....0			
37. Change in net unrealized foreign exchange capital gain or (loss)			
38. Change in net deferred income tax			
39. Change in nonadmitted assets			
40. Change in unauthorized and certified reinsurance			
41. Change in treasury stock			
42. Change in surplus notes			
43. Cumulative effect of changes in accounting principles			
44. Capital Changes:			
44.1 Paid in			
44.2 Transferred from surplus (Stock Dividend)			
44.3 Transferred to surplus			
45. Surplus adjustments:			
45.1 Paid in		1,500,000	1,500,000
45.2 Transferred to capital (Stock Dividend)			
45.3 Transferred from capital			
46. Dividends to stockholders			
47. Aggregate write-ins for gains or (losses) in surplus	(1)		
48. Net change in capital and surplus (Lines 34 to 47)	(331)	1,500,000	1,501,029
49. Capital and surplus end of reporting period (Line 33 plus 48)	1,500,698	1,500,000	1,501,029
DETAILS OF WRITE-INS			
4701. Misc Adjustment	(1)		
4702.			
4703.			
4798. Summary of remaining write-ins for Line 47 from overflow page			
4799. TOTALS (Lines 4701 through 4703 plus 4798) (Line 47 above)	(1)		

CASH FLOW

	1 Current Year To Date	2 Prior Year To Date	3 Prior Year Ended December 31
Cash from Operations			
1. Premiums collected net of reinsurance			
2. Net investment income	567		725
3. Miscellaneous income			
4. TOTAL (Lines 1 to 3)	567		725
5. Benefit and loss related payments			
6. Net transfers to Separate Accounts, Segregated Accounts and Protected Cell Accounts			
7. Commissions, expenses paid and aggregate write-ins for deductions			
8. Dividends paid to policyholders			
9. Federal and foreign income taxes paid (recovered) net of \$.....0 tax on capital gains (losses)	148		
10. TOTAL (Lines 5 through 9)	148		
11. Net cash from operations (Line 4 minus Line 10)	419		725
Cash from Investments			
12. Proceeds from investments sold, matured or repaid:			
12.1 Bonds	149,766		
12.2 Stocks			
12.3 Mortgage loans			
12.4 Real estate			
12.5 Other invested assets			
12.6 Net gains or (losses) on cash, cash equivalents and short-term investments			
12.7 Miscellaneous proceeds			
12.8 TOTAL investment proceeds (Lines 12.1 to 12.7)	149,766		
13. Cost of investments acquired (long-term only):			
13.1 Bonds	149,630	151,354	151,353
13.2 Stocks			
13.3 Mortgage loans			
13.4 Real estate			
13.5 Other invested assets			
13.6 Miscellaneous applications			
13.7 TOTAL investments acquired (Lines 13.1 to 13.6)	149,630	151,354	151,353
14. Net increase (or decrease) in contract loans and premium notes			
15. Net cash from investments (Line 12.8 minus Line 13.7 and Line 14)	136	(151,354)	(151,353)
Cash from Financing and Miscellaneous Sources			
16. Cash provided (applied):			
16.1 Surplus notes, capital notes			
16.2 Capital and paid in surplus, less treasury stock		1,500,000	1,500,000
16.3 Borrowed funds			
16.4 Net deposits on deposit-type contracts and other insurance liabilities			
16.5 Dividends to stockholders			
16.6 Other cash provided (applied)			
17. Net cash from financing and miscellaneous sources (Line 16.1 through 16.4 minus Line 16.5 plus Line 16.6)		1,500,000	1,500,000
RECONCILIATION OF CASH, CASH EQUIVALENTS AND SHORT-TERM INVESTMENTS			
18. Net change in cash, cash equivalents and short-term investments (Line 11, plus Lines 15 and 17)	555	1,348,646	1,349,372
19. Cash, cash equivalents and short-term investments:			
19.1 Beginning of year	1,349,372		
19.2 End of period (Line 18 plus Line 19.1)	1,349,927	1,348,646	1,349,372

Note: Supplemental Disclosures of Cash Flow Information for Non-Cash Transactions:

20.0001				
---------	--	--	--	--

7 Exhibit of Premiums, Enrollment and Utilization NONE

8 Claims Unpaid and Incentive Pool, Withhold and Bonus NONE

9 Underwriting Investment Exhibit NONE

Notes to Financial Statement

1. Summary of Significant Accounting Policies and Going Concern

A. Accounting Practices

SummaCare of Michigan, Inc.'s (the Company or SCM) statutory financial statements are presented on the basis of accounting practices prescribed or permitted by the Michigan Department of Insurance and Financial Services (DIFS) and in accordance with the Accounting Practices and Procedures Manual.

The DIFS recognizes only statutory accounting practices prescribed or permitted by the State of Michigan (the State) for determining its solvency under Michigan Insurance Law. NAIC SAP has been adopted as a component of the prescribed or permitted practices by the State with some modifications. The admitted assets, liabilities, capital and surplus of the Company as of September 30, 2021 and December 31, 2020 and the results of its operations and its cash flow for the years then ended have been determined in accordance with accounting principles prescribed or permitted by the DIFS. Management believes the monetary effect on net income and statutory surplus between NAIC SAP and accounting principles prescribed or permitted by the DIFS is not material. Additionally, the Company's risk based capital would not have triggered a regulatory event had it not used a prescribed or permitted practice.

	SSAP #	F/S Page	F/S Line	2021	2020
<u>Net Income</u>					
1) SummaCare of Michigan state basis (Page 4, Line 32, Columns 2 & 3)	XXX	XXX	XXX	(330)	1,029
2) State Prescribed Practices that increase / (decrease) NAIC SAP:	-	-	-	-	-
3) State Permitted Practices that increase / (decrease) NAIC SAP:	-	-	-	-	-
4) NAIC SAP	XXX	XXX	XXX	<u>(330)</u>	<u>1,029</u>
<u>Surplus</u>					
5) SummaCare of Michigan state basis (Page 3, Line 33, Columns 3 & 4)	XXX	XXX	XXX	1,500,698	1,501,029
6) State Prescribed Practices that increase / (decrease) NAIC SAP:	-	-	-	-	-
7) State Permitted Practices that increase / (decrease) NAIC SAP:	-	-	-	-	-
8) NAIC SAP	XXX	XXX	XXX	<u>1,500,698</u>	<u>1,501,029</u>

B. Use of Estimates

The preparation of financial statements in conformity with *Accounting Practices and Procedures Manual*, the NAIC Annual Statement Instructions and other accounting practices prescribed or permitted by the DIFS requires management to make estimates and assumptions that affect the reported amounts of assets and liabilities and disclosure of contingent assets and liabilities at the date of the financial statements and the reported amounts of revenues and expenses during the reporting period. Actual results could differ significantly from those estimates.

C. Accounting Policy

The Company uses the following accounting policies:

1) Cash and Short-Term Investments

Cash and short-term investments include cash on hand, cash held in bank accounts (including overdrafts), interest bearing deposits, and money market instruments purchased with an original maturity of one year or less. Short-term investments are stated at amortized cost.

2) Bonds not backed by other loans – None.

3) Common stocks – None.

4) Preferred stocks – None.

5) Mortgage loans on real estate – None.

6) Loan backed securities – None.

7) Investments in subsidiaries, controlled and affiliated entities - None

8) Investments in joint ventures, partnerships and limited liability companies – None.

9) Accounting policy for derivatives – The Company does not invest in derivative instruments.

10) Whether or not the reporting entity utilizes anticipated investment income as a factor in the premium deficiency calculation – None.

11) A summary of management's policies and methodologies for estimating the liabilities for loss and loss/claim adjustment expenses – None.

12) The Company's capitalization policy and predefined thresholds have not changed from the prior period.

13) The method used to estimate pharmaceutical rebate receivables - None.

Notes to Financial Statement

D. Going Concern – Not applicable.

2. Accounting Changes and Corrections of Errors

A. Accounting Changes – None.

B. Corrections of Errors – None

3. Business Combinations and Goodwill

A. Statutory Purchase Method – None.

B. Statutory Merger – None.

C. Assumption Reinsurance – None.

D. Impairment Loss – None.

4. Discontinued Operations – None.

5. Investments

A. Mortgage Loans – None.

B. Debt Restructuring – None.

C. Reverse Mortgages – None.

D. Loan backed securities – None.

E. Dollar Repurchase Agreements and/or Securities Lending Transactions – None.

F. Repurchase Agreements Transactions Accounted for as Secured Borrowings – None.

G. Reverse Repurchase Agreements Transactions Accounted for a Secured Borrowings – None.

H. Repurchase Agreements Transactions Accounted for as a Sale – None.

I. Reverse Repurchase Agreements Transactions Accounted for as a Sale – None.

J. Real Estate – None.

K. Low Income Housing Tax Credits – None.

Notes to Financial Statement**L. Restricted Assets**

	1	2	3	4	5	6
	Total Gross Restricted from Current Year	Total Gross Restricted from Prior Year	Increase / (Decrease) (1 minus 2)	Total Current Year Admitted Restricted	Percentage Gross Restricted to Total Assets	Percentage Admitted to Total Admitted Assets
a. Subject to contractual obligation for which liability is not shown	\$0	\$0	\$0	\$0	\$0	\$0
b. Collateral held under security lending agreements	\$0	\$0	\$0	\$0	\$0	\$0
c. Subject to repurchase agreements	\$0	\$0	\$0	\$0	0.000	0.000
d. Subject to reverse repurchase agreements	\$0	\$0	\$0	\$0	0.000	0.000
e. Subject to dollar repurchase agreements	\$0	\$0	\$0	\$0	0.000	0.000
f. Subject to dollar reverse repurchase agreements	\$0	\$0	\$0	\$0	0.000	0.000
g. Placed under option contracts	\$0	\$0	\$0	\$0	0.000	0.000
h. Letter stock or securities restricted as to sale	\$0	\$0	\$0	\$0	0.000	0.000
i. FHLB capital stock	\$0	\$0	\$0	\$0	0.000	0.000
j. On deposit with states	\$149,604	\$150,080	(\$476)	\$149,604	9.968	9.968
k. On deposit with other regulatory bodies	\$0	\$0	\$0	\$0	0.000	0.000
l. Pledged as collateral to FHLB	\$0	\$0	\$0	\$0	0.000	0.000
m. Pledged as collateral not captured in other categories	\$0	\$0	\$0	\$0	0.000	0.000
n. Other restricted assets						
o. Total restricted assets	\$149,604	\$150,080	(\$476)	\$149,604	9.968	9.968

M. Working Capital Finance Investments – None.**N. Offsetting and Netting of Assets and Liabilities – None.****O. 5GI Securities – None.****P. Short Sales – None.****Q. Prepayment Penalty and Acceleration Fees – None.****6. Joint Ventures, Partnerships and Limited Liability Companies****A.** For investments in joint ventures, partnerships and limited liability companies that exceed 10% of the admitted assets of the insurer – None.**B.** Impaired investments in joint ventures, partnerships and limited liability companies – None.**7. Investment Income****A.** The basis, by category of investment income, for excluding (nonadmitting) any investment income due and accrued - All accrued investment income was admitted for the period.**B.** Total amount excluded - None**8. Derivative Instruments – None.****9. Income Taxes****A. The components of deferred tax asset as of September 30, 2021 and December 31, 2020 are:**

Notes to Financial Statement

	9/30/2021			12/31/2020			Change		
	Ordinary	Capital	Total	Ordinary	Capital	Total	Ordinary	Capital	Total
1.									
(a) Gross Deferred Tax Assets	\$0	\$0	\$0	\$0	\$0	\$0	\$0	\$0	\$0
(b) Statutory Valuation Allowance Adjustments	\$0	\$0	\$0	\$0	\$0	\$0	\$0	\$0	\$0
(c) Adjusted Gross DTA's (1a-1b)	\$0	\$0	\$0	\$0	\$0	\$0	\$0	\$0	\$0
(d) DTA's Nonadmitted	\$0	\$0	\$0	\$0	\$0	\$0	\$0	\$0	\$0
(e) Subtotal Net DTA's (1c-1d)	\$0	\$0	\$0	\$0	\$0	\$0	\$0	\$0	\$0
(f) Deferred Tax Liabilities	\$0	\$0	\$0	\$0	\$0	\$0	\$0	\$0	\$0
(g) Net Admitted DTA / Net DTL (1e-1f)	\$0	\$0	\$0	\$0	\$0	\$0	\$0	\$0	\$0
2.									
Admission Calculation Components SSAP No. 101									
(a) Federal Income Taxes Paid In Prior Years Recoverable Through Loss Carrybacks.	\$0	\$0	\$0	\$0	\$0	\$0	\$0	\$0	\$0
(b) Adjusted Gross DTA's Expected to be Realized (Excluding The Amount of DTA's From 2(a) above) After Application of the Threshold Limitation. (The Lesser of 2 (b) 1 and 2 (b) 2 Below)	\$0	\$0	\$0	\$0	\$0	\$0	\$0	\$0	\$0
1. Adjusted Gross DTA's Expected to be Realized Following the Balance Sheet Date.	\$0	\$0	\$0	\$0	\$0	\$0	\$0	\$0	\$0
2. Adjusted Gross DTA's Allowed Per Limitation Threshold.	XXX	XXX	\$225,105	XXX	XXX	\$225,154	XXX	XXX	(\$50)
(c) Adjusted Gross DTA's (Excluding The Amount of DTA's from 2 (a) and 2 (b) above) Offset by Gross DTL's.	\$0	\$0	\$0	\$0	\$0	\$0	\$0	\$0	\$0
(d) DTA's Admitted as the result of application of SSAP No. 101. Total (2(a)+2(b)+2(c))	\$0	\$0	\$0	\$0	\$0	\$0	\$0	\$0	\$0
3.									
(a) Ratio Percentage used To Determine Recovery Period And Threshold Limitation Amount.	2021	2020							
	0%	0%							
(b) Amount Of Adjusted Capital And Surplus Used To Determine Recovery Period And Threshold Limitation In 2 (b) 2 Above.	\$1,500,698	\$1,501,029							
4.									
Impact of Tax-Planning Strategies									
(a) Determination of Adjusted Gross DTA's and Net Admitted DTA's By Tax Character as a percentage.									
1. Adjusted Gross DTA's	\$0	\$0	\$0	\$0	\$0	\$0	\$0	\$0	\$0
2. Percentage of Adjusted Gross DTA's	\$0	\$0	\$0	\$0	\$0	\$0	\$0	\$0	\$0
3. Net Admitted DTA's	\$0	\$0	\$0	\$0	\$0	\$0	\$0	\$0	\$0
4. Percentage of Net Admitted Gross DTA's because of tax planning.	\$0	\$0	\$0	\$0	\$0	\$0	\$0	\$0	\$0
(b) Does the Company's tax planning strategies include reinsurance?	Yes	No	X						

B. Regarding deferred tax liabilities not recognized – None.

C. Current income taxes incurred consist of the following components:

Notes to Financial Statement

	9/30/2021	12/31/2020	Change
1. Current Income Tax			
(a) Federal	\$60	\$274	(\$214)
(b) Foreign	\$0	\$0	\$0
(c) Subtotal	\$60	\$274	(\$214)
(d) Federal Income Tax on Net Capital Gains	\$0	\$0	\$0
(e) Utilization of Capital Loss Carry Forwards	\$0	\$0	\$0
(f) Other	\$0	\$0	\$0
(g) Federal and Foreign Income Taxes Incurred	\$60	\$274	(\$214)
2. Deferred Tax Assets:			
(a) Ordinary			
(1) Unpaid Losses	\$0	\$0	\$0
(2) Unearned Premium Reserve	\$0	\$0	\$0
(3) Policyholder Reserves	\$0	\$0	\$0
(4) Investments	\$0	\$0	\$0
(5) Deferred Acquisition Costs	\$0	\$0	\$0
(6) Policyholder Dividends Accrual	\$0	\$0	\$0
(7) Fixed Assets	\$0	\$0	\$0
(8) Compensation and Benefits Accrual	\$0	\$0	\$0
(9) Pension Accrual	\$0	\$0	\$0
(10) Receivables - Nonadmitted	\$0	\$0	\$0
(11) Net Operating Loss Carry-Forward	\$0	\$0	\$0
(12) Tax Credits	\$0	\$0	\$0
(13) Other	\$0	\$0	\$0
Subtotal	\$0	\$0	\$0
(b) Statutory Valuation Allowance (Ordinary)	\$0	\$0	\$0
(c) Nonadmitted	\$0	\$0	\$0
(d) Admitted Ordinary Deferred Tax Assets	\$0	\$0	\$0
(e) Capital			
(1) Investments	\$0	\$0	\$0
(2) Net Capital Loss Carry-Forward	\$0	\$0	\$0
(3) Unrealized Gains/losses	\$0	\$0	\$0
(4) Other	\$0	\$0	\$0
Subtotal	\$0	\$0	\$0
(f) Statutory Valuation Allowance Adjustment (C	\$0	\$0	\$0
(g) Nonadmitted	\$0	\$0	\$0
(h) Admitted Capital Deferred Tax Assets	\$0	\$0	\$0
(i) Admitted Deferred Tax Assets	\$0	\$0	\$0
3. Deferred Tax Liabilities:			
(a) Ordinary			
(1) Investments	\$0	\$0	\$0
(2) Fixed Assets	\$0	\$0	\$0
(3) Deferred and Uncollected Premium	\$0	\$0	\$0
(4) Policyholder Reserves	\$0	\$0	\$0
(5) Other	\$0	\$0	\$0
Subtotal	\$0	\$0	\$0
(b) Capital			
(1) Investments	\$0	\$0	\$0
(2) Real Estate	\$0	\$0	\$0
(3) Other	\$0	\$0	\$0
Subtotal	\$0	\$0	\$0
(c) Deferred Tax Liabilities	\$0	\$0	\$0
4. Net Deferred Tax Assets / Liabilities	\$0	\$0	\$0

D. The provision for federal income taxes incurred is different than that which would be obtained by applying the statutory federal income tax rate to income before taxes. The significant items causing this difference are as follows as of September 30, 2021:

Notes to Financial Statement

Description	Amount	Tax Effect	Effective Tax Rate
Income (loss) before taxes	(270.00)	(57)	21.0%
Meals & Entertainment	0.00	-	0.0%
Income adjustment	558.00	117	-43.4%
Change in VA	0.00	-	0.0%
Deferred Tax True Up	0.00	-	0.0%
Change in non-admitted assets	0.00	-	0.0%
	288	60	-22.40%
Federal income taxes incurred			60
Change in net deferred income taxes			-
Total statutory income taxes			60

E. Amounts of operating loss and tax credit carry-forwards available for tax purposes

- The amounts, origination dates and expiration dates of operating loss carryforwards and tax credit carry forwards available for tax purposes – None.
- There are no income taxes available for recoupment in the event of future net losses.
- The Company has no protective tax deposits reported as admitted assets under Section 6603 of the internal Revenue Service Code as of September 30, 2021 and December 31, 2020.

F. Consolidation of Federal Income Tax Return – None.

G. Federal and foreign loss contingencies as determined in accordance with SSAP 5R – None.

H. Repatriation Transition Tax – None.

I. Alternative Minimum Tax Credit – None.

10. Information Concerning Parent, Subsidiaries, and Affiliates

A. Nature of the Relationships

SummaCare, Inc. is a wholly owned subsidiary of Summa Health System Corporation (SHSC). SummaCare of Michigan is a wholly-owned subsidiary of SummaCare, Inc.

Affiliated and subsidiary organizations of SC include Summa Health System Community; Summa Health: Summa Health System, Inc. (SHS); Summa Insurance Company (SIC); Summa Health Network LLC (SHN); Apex Benefits Services, LLC (Apex); Summa Insurance Agency, LLC (SIA); Summa Physicians, Inc. (SPI); Summa Foundation; Middlebury Assurance Corp. (MAC); Summa Rehabilitation Hospital, LLC; Ohio Health Choice, Inc. (OHC); Cornerstone Medical Services (Cornerstone); Summa Accountable Care Organization (ACO); Summa Integrated Services Organization (SISO); Summa Management Services Organization (SMSO); Medina-Summit ASC, LLC; SummaCare of Michigan Inc.; Summa HHAH Holdings LLC; Summa Health Home and Hospice, LLC; Summa Health Outpatient Services LLC; Akron Physician Wellness Initiative; DIG Holdings LLC; Summa Health Retirement Income Plan & Trust. The partnership between Summa and HealthSpan has ended. Their share of the company was purchased back by Summa.

B. & C. Transactions with Affiliated Organizations - None

D. Amounts due from or to related parties as of the date of each balance sheet presented and, if not otherwise apparent, the terms and manner of settlement – None.

E. Guarantees or undertakings – None.

F. A description of material management or service contracts and cost-sharing arrangement involving the reporting entity and any related party – None.

Notes to Financial Statement

- G.** The Company's common membership is held by its parent, SummaCare, Inc.
- H.** Investments in upstream intermediate entities or ultimate parent – None.
- I.** Investments in SCA Entities – None.
- J.** Investments in impaired SCA entities – None.
- K.** Investments in foreign insurance subsidiaries – None.
- L.** Investment in downstream noninsurance holding company – None.
- M.** All SCA investment – None.
- N.** Investments in insurance SCA's – None.
- O.** SCA or SSAP No. 48 Entity Loss Tracking – Not required.

11. Debt

SummaCare of Michigan has no debt as of September 30, 2021.

12. Retirement Plans

- A.** Defined Benefit Plan - None.
- B.** A narrative description of investment policy and strategies – Not applicable.
- C.** The fair value of each class of plan asset – Not applicable.
- D.** A narrative description of the basis used to determine the long-term rate of return – Not applicable.
- E.** Defined Contribution Plan – None.
- F.** Multiemployer Plan – None.
- G.** Consolidated / Holding Company Plan – None.
- H.** Postemployment Benefits and Compensated Absences – None.
- I.** Impact of Medicare Modernization Act on Postretirement Benefits – None.

13. Capital and Surplus, Shareholders' Dividend Restrictions and Quasi-Reorganizations

- 1.) The number of shares of each class of capital stock authorized, issued and outstanding as of the balance sheet date and the par value or stated value of each class – None.
- 2.) Dividends rate, liquidation value – Not applicable.
- 3.) Dividend Restrictions – Not applicable.
- 4.) Date and amounts of dividends paid – Not applicable.
- 5.) Portion of reporting entity's profits that can be paid as ordinary dividends – Not applicable.
- 6.) Restrictions on unassigned funds – None.
- 7.) Mutual Reciprocals - None.
- 8.) Stock held by the Company for special purposes – None.
- 9.) Special surplus funds – None.
- 10.) The portion of unassigned funds represented or reduced by:

Notes to Financial Statement

Unrealized Gains (Losses) – (\$1,754)

- 11.) Surplus notes – None.
- 12.) Restatement in a quasi-reorganization – Not applicable
- 13.) Quasi-reorganization – Not applicable.

14. Liabilities, Contingencies and Assessments

- A. Contingent commitments – None.
- B. Assessments – None
- C. Gain contingencies – None.
- D. Claims related extra contractual obligation and bad faith losses stemming from lawsuits – None.
- E. Joint and Several Liabilities – None.
- F. All other contingencies – None.

15. Leases – None.

16. Information Regarding Off-Balance Sheet Risk – Not Applicable.

17. Sale, Transfer and Servicing of Financial Assets and Extinguishments of Liability – Not Applicable.

18. Gains or Loss to the Reporting Entity from Uninsured Plans – Not Applicable.

19. Direct Premium Written / Produced by Managing General Agents / Third Party Administrators – Not Applicable.

20. Fair Value Measurement

- A. Assets and liabilities measured and reported at fair value.

1) Fair value measurements at the reporting date.

Notes to Financial Statement

Description for each class of asset or liability	Level 1	Level 2	Level 3	Net Asset Value (NAV)	Total
a. Assets at fair value					
Cash and short-term investments	\$1,349,927	\$0	\$0	\$0	\$1,349,927
Perpetual referred stock					
Industrial and misc	\$0	\$0	\$0	\$0	\$0
Parent, subsidiaries and affiliates	\$0	\$0	\$0	\$0	\$0
Total perpetual and preferred stock	\$0	\$0	\$0	\$0	\$0
Bonds					
U.S. Governments	\$0	\$0	\$0	\$0	\$0
Industrial and misc	\$0	\$0	\$0	\$0	\$0
Hybrid securities	\$0	\$0	\$0	\$0	\$0
Parent, subsidiaries and affiliates	\$0	\$0	\$0	\$0	\$0
Total Bonds	\$0	\$0	\$0	\$0	\$0
Common stock					
Industrial and misc	\$0	\$0	\$0	\$0	\$0
Parent, subsidiaries and affiliates	\$0	\$0	\$0	\$0	\$0
Total common stock	\$0	\$0	\$0	\$0	\$0
Derivative assets					
Interest rate contracts					
Foreign exchange contracts	\$0	\$0	\$0	\$0	\$0
Credit contracts	\$0	\$0	\$0	\$0	\$0
Commodity futures contracts					
Commodity forwards contracts	\$0	\$0	\$0	\$0	\$0
Total derivatives	\$0	\$0	\$0	\$0	\$0
Separate account assets	\$0	\$0	\$0	\$0	\$0
Total assets at fair value	\$1,349,927	\$0	\$0	\$0	\$1,349,927
b. Liabilities at fair value					
Derivative liabilities	\$0	\$0	\$0	\$0	\$0
Total liabilities at fair value	\$0	\$0	\$0	\$0	\$0

2) Fair value measurement in (Level 3) of the Fair Value Hierarchy – None.

3) Policy for determining when transfers between levels are recognized – Not applicable.

4) For fair value measurements categorized within level 2 and level 3 of the fair value hierarchy – The fair values of the Company’s investment in U.S. Treasury and U.S. government agency bond securities are based on quoted prices or dealer quotes. For bonds not actively traded, fair values are estimated using values obtained from independent pricing services, or in the case of private placements, are estimated by discounting the expected future cash flows using current market rates applicable to the yield, credit and maturity of the investment.

5) Derivative assets and liabilities – None.

B. The carrying amounts reported in the statutory statements of admitted assets, liabilities, and capital and surplus for cash and short-term investments, uncollected premiums, reinsurance recoverable, investment income due and accrued, other receivables, federal income tax receivable, receivables from and payables to parent, affiliates and subsidiary, claims unpaid, unpaid claims adjustment expenses, accrued medical incentive pool, premiums received in advance, general expenses due or accrued, and other liabilities approximate fair value because of the short-term nature of these items. A financial instrument’s categorization within the valuation hierarchy is based upon the lowest level of input that is significant to the fair value measurement.

C. The following table summarizes the Company’s fair value measurements for financial instruments where fair value is a financial statement disclosure item only.

Notes to Financial Statement

September 30, 2021									
Financial Instrument	Aggregate Fair Value	Admitted Assets	Level 1	Level 2	Level 3	Net Asset Value (NAV)	Not Practicable (Carrying Value)		
U.S. Treasury securities:	\$ 149,203	\$ 150,957	\$ 149,203	\$ -	\$ -	\$ -	\$ -	\$ -	\$ -
U.S. government agency securities	\$ -	\$ -	\$ -	\$ -	\$ -	\$ -	\$ -	\$ -	\$ -
Short-term investments	\$ 349,896	\$ 349,896	\$ 349,896	\$ -	\$ -	\$ -	\$ -	\$ -	\$ -

December 31, 2020									
Financial Instrument	Aggregate Fair Value	Admitted Assets	Level 1	Level 2	Level 3	Net Asset Value (NAV)	Not Practicable (Carrying Value)		
U.S. Treasury securities:	\$ 151,359	\$ 151,556	\$ 151,359	\$ -	\$ -	\$ -	\$ -	\$ -	\$ -
U.S. government agency securities	\$ -	\$ -	\$ -	\$ -	\$ -	\$ -	\$ -	\$ -	\$ -
Short-term investments	\$ 349,447	\$ 349,447	\$ 349,447	\$ -	\$ -	\$ -	\$ -	\$ -	\$ -

D. Not practicable to estimate fair value – Not applicable.

E. Investments measured using the NAV – None.

21. Other Items

A. Unusual or Infrequent Items – None.

B. Troubled Debt Restructuring – None.

C. Other Disclosures and Unusual Items – None.

D. Business Interruption Insurance Recoveries – None.

E. State Transferable and Non-transferable Tax Credits – None.

F. Subprime Mortgage Related Exposure – None.

G. Retained Assets – None.

H. Insurance-Linked Securities (ILS) Contracts – None.

I. The Amount That Could Be Realized on Life Insurance Where the Reporting Entity is the Owner and Beneficiary or Has Otherwise Obtained Rights to Control the Policy – None.

22. Events Subsequent

Type I – Recognized Subsequent Events – None.

Type II – Nonrecognized Subsequent Events – None.

23. Reinsurance

A. Ceded Reinsurance Report

Section 1 – General Interrogatories

(1) Are any of the reinsurers, listed in Schedule S as non-affiliated, owned in excess of 10% or controlled, either directly or indirectly, by the company or by any representative, officer, trustee, or director of the company?
Yes () No (X)

If yes, give full details.

(2) Have any policies issued by the company been reinsured with a company chartered in a country other than the United States (excluding U.S. Branches of such companies) that is owned in excess of 10% or controlled directly or indirectly by an insured, a beneficiary, a creditor or any other person not primarily engaged in the insurance business?

Yes () No (X)

If yes, give full details.

Notes to Financial Statement

Section 2 – Ceded Reinsurance Report – Part A

- (1) Does the company have any reinsurance agreements in effect under which the reinsurer may unilaterally cancel any reinsurance for reasons other than for nonpayment of premium or other similar credit?

Yes () No (X)

- a. If yes, what is the estimated amount of the aggregate reduction in surplus of a unilateral cancellation by the reinsurer as of the date of this statement, for those agreements in which cancellation results in a net obligation of the reporting entity to the reinsurer, and for which such obligation is not presently accrued? Where necessary, the reporting entity may consider the current or anticipated experience of the business reinsured in making this estimate. \$_____

- b. What is the total amount of reinsurance credits taken, whether as an asset or as a reduction of liability for these agreements in this statement? \$_____

- (2) Does the reporting entity have any reinsurance agreements in effect such that the amount of losses paid or accrued through the statement date may result in a payment to the reinsurer of amounts that, in aggregate and allowing for offset of mutual credits from other reinsurance agreements with the same reinsurer, exceed the total direct premium collected under reinsurance policies?

Yes () No (X)

If yes, give full details.

Section 3 – Ceded Reinsurance Report – Part B

- (1) What is the estimated amount of the aggregate reduction in surplus, (for agreements other than those under which the reinsurer may unilaterally cancel for reasons other than for nonpayment of premium or other similar credits reflected in Section 2 above) of termination of all reinsurance agreements, by either party, as of the date of this statement? Where necessary, the company may consider the current or anticipated experience of the business reinsured in making this estimate. \$0

- (2) Have any new agreements been executed or existing agreements amended, since January 1 of the year of this statement, to include policies or contracts that were in force or which had existing reserves established by the company as of the effective date of the agreement?

Yes () No (X)

If yes, what is the amount of the reinsurance credits, whether an asset or a reduction of a liability, taken for such new agreements or amendments? \$_____

B. Uncollectible Reinsurance – None.

C. Commutation of Ceded Reinsurance – None.

D. Certified Reinsurer Rating Downgraded or Status Subject to Revocation – None.

E. Reinsurance Credit - None

24. Retrospectively Rated Contracts & Contracts Subject to Redetermination – None.

25. Changes in Incurred Claims and Claims Adjustment Expenses – None.

26. Intercompany Pooling Arrangements – None.

27. Structured Settlements – None.

28. Healthcare Receivables – None.

29. Participating Policies – None.

30. Premium Deficiency Reserves

Notes to Financial Statement

Premium deficiency losses are recognized when it is probable that expected claim expenses will exceed future premiums on existing health contracts. For purposes of premium deficiency losses, contracts are grouped in a manner consistent with the Company's method of acquiring, servicing and measuring the profitability of such contracts. There were no premium deficiency reserves recorded as of September 30, 2021 and December 31, 2020, respectively.

- 1. Liability carried for premium deficiency reserves:** \$0
- 2. Date of the most recent evaluation of this liability:** N/A
- 3. Was anticipated investment income utilized in the calculation:** No

31. Anticipated Salvage Value and Subrogation – None

GENERAL INTERROGATORIES

PART 1 - COMMON INTERROGATORIES GENERAL

- 1.1 Did the reporting entity experience any material transactions requiring the filing of Disclosure of Material Transactions with the State of Domicile, as required by the Model Act? Yes[] No[X]
- 1.2 If yes, has the report been filed with the domiciliary state? Yes[] No[] N/A[X]

- 2.1 Has any change been made during the year of this statement in the charter, by-laws, articles of incorporation, or deed of settlement of the reporting entity? Yes[] No[X]
- 2.2 If yes, date of change:

- 3.1 Is the reporting entity a member of an Insurance Holding Company System consisting of two or more affiliated persons, one or more of which is an insurer? Yes[X] No[]
If yes, complete Schedule Y, Parts 1 and 1A.
- 3.2 Have there been any substantial changes in the organizational chart since the prior quarter end? Yes[] No[X]
- 3.3 If the response to 3.2 is yes, provide a brief description of those changes:
- 3.4 Is the reporting entity publicly traded or a member of a publicly traded group? Yes[] No[X]
- 3.5 If the response to 3.4 is yes, provide the CIK (Central Index Key) code issued by the SEC for the entity/group.

- 4.1 Has the reporting entity been a party to a merger or consolidation during the period covered by this statement? Yes[] No[X]
If yes, complete and file the merger history data file with the NAIC.
- 4.2 If yes, provide the name of entity, NAIC Company Code, and state of domicile (use two letter state abbreviation) for any entity that has ceased to exist as a result of the merger or consolidation.

1 Name of Entity	2 NAIC Company Code	3 State of Domicile
.....

- 5. If the reporting entity is subject to a management agreement, including third-party administrator(s), managing general agent(s), attorney-in-fact, or similar agreement, have there been any significant changes regarding the terms of the agreement or principals involved? Yes[] No[] N/A[X]
If yes, attach an explanation.

- 6.1 State as of what date the latest financial examination of the reporting entity was made or is being made.
- 6.2 State the as of date that the latest financial examination report became available from either the state of domicile or the reporting entity. This date should be the date of the examined balance sheet and not the date the report was completed or released.
- 6.3 State as of what date the latest financial examination report became available to other states or the public from either the state of domicile or the reporting entity. This is the release date or completion date of the examination report and not the date of the examination (balance sheet date).
- 6.4 By what department or departments?
- 6.5 Have all financial statement adjustments within the latest financial examination report been accounted for in a subsequent financial statement filed with Departments? Yes[] No[] N/A[X]
- 6.6 Have all of the recommendations within the latest financial examination report been complied with? Yes[] No[] N/A[X]

- 7.1 Has this reporting entity had any Certificates of Authority, licenses or registrations (including corporate registration, if applicable) suspended or revoked by any governmental entity during the reporting period? Yes[] No[X]
- 7.2 If yes, give full information

- 8.1 Is the company a subsidiary of a bank holding company regulated by the Federal Reserve Board? Yes[] No[X]
- 8.2 If response to 8.1 is yes, please identify the name of the bank holding company.
- 8.3 Is the company affiliated with one or more banks, thrifts or securities firms? Yes[] No[X]
- 8.4 If response to 8.3 is yes, please provide below the names and location (city and state of the main office) of any affiliates regulated by a federal regulatory services agency [i.e. the Federal Reserve Board (FRB), the Office of the Comptroller of the Currency (OCC), the Federal Deposit Insurance Corporation (FDIC) and the Securities Exchange Commission (SEC)] and identify the affiliate's primary federal regulator.]

1 Affiliate Name	2 Location (City, State)	3 FRB	4 OCC	5 FDIC	6 SEC
.....	No	No	No	No

- 9.1 Are the senior officers (principal executive officer, principal financial officer, principal accounting officer or controller, or persons performing similar functions) of the reporting entity subject to a code of ethics, which includes the following standards? Yes[X] No[]
 - (a) Honest and ethical conduct, including the ethical handling of actual or apparent conflicts of interest between personal and professional relationships;
 - (b) Full, fair, accurate, timely and understandable disclosure in the periodic reports required to be filed by the reporting entity;
 - (c) Compliance with applicable governmental laws, rules and regulations;
 - (d) The prompt internal reporting of violations to an appropriate person or persons identified in the code; and
 - (e) Accountability for adherence to the code.
- 9.11 If the response to 9.1 is No, please explain:
- 9.2 Has the code of ethics for senior managers been amended? Yes[] No[X]
- 9.21 If the response to 9.2 is Yes, provide information related to amendment(s).
- 9.3 Have any provisions of the code of ethics been waived for any of the specified officers? Yes[] No[X]
- 9.31 If the response to 9.3 is Yes, provide the nature of any waiver(s).

FINANCIAL

- 10.1 Does the reporting entity report any amounts due from parent, subsidiaries or affiliates on Page 2 of this statement? Yes[] No[X]
- 10.2 If yes, indicate any amounts receivable from parent included in the Page 2 amount: \$ 0

INVESTMENT

- 11.1 Were any of the stocks, bonds, or other assets of the reporting entity loaned, placed under option agreement, or otherwise made available for use by another person? (Exclude securities under securities lending agreements.) Yes[] No[X]
- 11.2 If yes, give full and complete information relating thereto:

- 12. Amount of real estate and mortgages held in other invested assets in Schedule BA: \$ 0
- 13. Amount of real estate and mortgages held in short-term investments: \$ 0

- 14.1 Does the reporting entity have any investments in parent, subsidiaries and affiliates? Yes[] No[X]
- 14.2 If yes, please complete the following:

GENERAL INTERROGATORIES (Continued)

	1 Prior Year-End Book/Adjusted Carrying Value	2 Current Quarter Book/Adjusted Carrying Value
14.21 Bonds		
14.22 Preferred Stock		
14.23 Common Stock		
14.24 Short-Term Investments		
14.25 Mortgages Loans on Real Estate		
14.26 All Other		
14.27 Total Investment in Parent, Subsidiaries and Affiliates (Subtotal Lines 14.21 to 14.26)		
14.28 Total Investment in Parent included in Lines 14.21 to 14.26 above		

- 15.1 Has the reporting entity entered into any hedging transactions reported on Schedule DB? Yes No
 15.2 If yes, has a comprehensive description of the hedging program been made available to the domiciliary state? Yes No N/A
 If no, attach a description with this statement.

16. For the reporting entity's security lending program, state the amount of the following as of the current statement date:
- | | | |
|--|----|---|
| 16.1 Total fair value of reinvested collateral assets reported on Schedule DL, Parts 1 and 2 | \$ | 0 |
| 16.2 Total book adjusted/carrying value of reinvested collateral assets reported on Schedule DL, Parts 1 and 2 | \$ | 0 |
| 16.3 Total payable for securities lending reported on the liability page | \$ | 0 |

17. Excluding items in Schedule E - Part 3 - Special Deposits, real estate, mortgage loans and investments held physically in the reporting entity's offices, vaults or safety deposit boxes, were all stocks, bonds and other securities, owned throughout the current year held pursuant to a custodial agreement with a qualified bank or trust company in accordance with Section 1, III - General Examination Considerations, F. Outsourcing of Critical Functions, Custodial or Safekeeping Agreements of the NAIC Financial Condition Examiners Handbook? Yes No
- 17.1 For all agreements that comply with the requirements of the NAIC Financial Condition Examiners Handbook, complete the following:

1 Name of Custodian(s)	2 Custodian Address
Huntington Bank	106 South Main Street, Akron OH 44308

- 17.2 For all agreements that do not comply with the requirements of the NAIC Financial Condition Examiners Handbook, provide the name, location and a complete explanation:

1 Name(s)	2 Location(s)	3 Complete Explanation(s)

- 17.3 Have there been any changes, including name changes, in the custodian(s) identified in 17.1 during the current quarter? Yes No
 17.4 If yes, give full and complete information relating thereto:

1 Old Custodian	2 New Custodian	3 Date of Change	4 Reason

- 17.5 Investment management - Identify all investment advisors, investment managers, broker/dealers, including individuals that have the authority to make investment decisions on behalf of the reporting entity. For assets that are managed internally by employees of the reporting entity, note as such. ["...that have access to the investment accounts"; "...handle securities"]

1 Name of Firm or Individual	2 Affiliation
Chris Keller - Huntington Bank	U

- 17.5097 For those firms/individuals listed in the table for Question 17.5, do any firms/individuals unaffiliated with the reporting entity (i.e. designated with a "U") manage more than 10% of the reporting entity's invested assets? Yes No
 17.5098 For firms/individuals unaffiliated with the reporting entity (i.e. designated with a "U") listed in the table for Question 17.5, does the total assets under management aggregate to more than 50% of the reporting entity's invested assets? Yes No
- 17.6 For those firms or individuals listed in the table for 17.5 with an affiliation code of "A" (affiliated) or "U" (unaffiliated), provide the information for the table below.

1 Central Registration Depository Number	2 Name of Firm or Individual	3 Legal Entity Identifier (LEI)	4 Registered With	5 Investment Management Agreement (IMA) Filed

- 18.1 Have all the filing requirements of the Purposes and Procedures Manual of the NAIC Investment Analysis Office been followed? Yes No
 18.2 If no, list exceptions:

19. By self-designating 5GI securities, the reporting entity is certifying the following elements for each self-designated 5GI security:
 a. Documentation necessary to permit a full credit analysis of the security does not exist or an NAIC CRP credit rating for an FE or PL security is not available.
 b. Issuer or obligor is current on all contracted interest and principal payments.
 c. The insurer has an actual expectation of ultimate payment of all contracted interest and principal.
 Has the reporting entity self-designated 5GI securities? Yes No

20. By self-designating PLGI securities, the reporting entity is certifying the following elements of each self-designated PLGI security:
 a. The security was purchased prior to January 1, 2018.
 b. The reporting entity is holding capital commensurate with the NAIC Designation reported for the security.
 c. The NAIC Designation was derived from the credit rating assigned by an NAIC CRP in its legal capacity as a NRSRO which is shown on a current private letter rating held by the insurer and available for examination by state insurance regulators.
 d. The reporting entity is not permitted to share this credit rating of the PL security with the SVO.
 Has the reporting entity self-designated PLGI securities? Yes No

GENERAL INTERROGATORIES (Continued)

21. By assigning FE to a Schedule BA non-registered private fund, the reporting entity is certifying the following elements of each self-designated FE fund:
- a. The shares were purchased prior to January 1, 2019.
 - b. The reporting entity is holding capital commensurate with the NAIC Designation reported for the security
 - c. The security had a public credit rating(s) with annual surveillance assigned by an NAIC CRP in its legal capacity as an NRSRO prior to January 1, 2019.
 - d. The fund only or predominantly holds bonds in its portfolio.
 - e. The current reported NAIC Designation was derived from the public credit rating(s) with annual surveillance assigned by an NAIC CRP in its legal capacity as an NRSRO.
 - f. The public credit rating(s) with annual surveillance assigned by an NAIC CRP has not lapsed.
- Has the reporting entity assigned FE to Schedule BA non-registered private funds that complied with the above criteria?

Yes[] No[X]

GENERAL INTERROGATORIES

PART 2 - HEALTH

- | | |
|---|--------------|
| 1. Operating Percentages: | |
| 1.1 A&H loss percent | 0.000% |
| 1.2 A&H cost containment percent | 0.000% |
| 1.3 A&H expense percent excluding cost containment expenses | 0.000% |
| 2.1 Do you act as a custodian for health savings accounts? | Yes[] No[X] |
| 2.2 If yes, please provide the amount of custodial funds held as of the reporting date. | \$..... 0 |
| 2.3 Do you act as an administrator for health savings accounts? | Yes[] No[X] |
| 2.4 If yes, please provide the balance of the funds administered as of the reporting date. | \$..... 0 |
| 3. Is the reporting entity licensed or chartered, registered, qualified, eligible or writing business in at least two states? | Yes[] No[X] |
| 3.1 If no, does the reporting entity assume reinsurance business that covers risks residing in at least one state other than the state of domicile of the reporting entity? | Yes[] No[X] |

SCHEDULE S - CEDED REINSURANCE
Showing All New Reinsurance Treaties - Current Year to Date

1 NAIC Company Code	2 ID Number	3 Effective Date	4 Name of Reinsurer	5 Domiciliary Jurisdiction	6 Type of Reinsurance Ceded	7 Type of Business Ceded	8 Type of Reinsurer	9 Certified Reinsurer Rating (1 through 6)	10 Effective Date of Certified Reinsurer Rating
NONE									

SCHEDULE T - PREMIUMS AND OTHER CONSIDERATIONS

Current Year to Date - Allocated by States and Territories

		Direct Business Only								
State, Etc.	1 Active Status (a)	2 Accident and Health Premiums	3 Medicare Title XVIII	4 Medicaid Title XIX	5 CHIP Title XXI	6 Federal Employees Health Benefits Program Premiums	7 Life and Annuity Premiums and Other Considerations	8 Property/Casualty Premiums	9 Total Columns 2 Through 8	10 Deposit -Type Contracts
1. Alabama (AL)	N									
2. Alaska (AK)	N									
3. Arizona (AZ)	N									
4. Arkansas (AR)	N									
5. California (CA)	N									
6. Colorado (CO)	N									
7. Connecticut (CT)	N									
8. Delaware (DE)	N									
9. District of Columbia (DC)	N									
10. Florida (FL)	N									
11. Georgia (GA)	N									
12. Hawaii (HI)	N									
13. Idaho (ID)	N									
14. Illinois (IL)	N									
15. Indiana (IN)	N									
16. Iowa (IA)	N									
17. Kansas (KS)	N									
18. Kentucky (KY)	N									
19. Louisiana (LA)	N									
20. Maine (ME)	N									
21. Maryland (MD)	N									
22. Massachusetts (MA)	N									
23. Michigan (MI)	N									
24. Minnesota (MN)	N									
25. Mississippi (MS)	N									
26. Missouri (MO)	N									
27. Montana (MT)	N									
28. Nebraska (NE)	N									
29. Nevada (NV)	N									
30. New Hampshire (NH)	N									
31. New Jersey (NJ)	N									
32. New Mexico (NM)	N									
33. New York (NY)	N									
34. North Carolina (NC)	N									
35. North Dakota (ND)	N									
36. Ohio (OH)	N									
37. Oklahoma (OK)	N									
38. Oregon (OR)	N									
39. Pennsylvania (PA)	N									
40. Rhode Island (RI)	N									
41. South Carolina (SC)	N									
42. South Dakota (SD)	N									
43. Tennessee (TN)	N									
44. Texas (TX)	N									
45. Utah (UT)	N									
46. Vermont (VT)	N									
47. Virginia (VA)	N									
48. Washington (WA)	N									
49. West Virginia (WV)	N									
50. Wisconsin (WI)	N									
51. Wyoming (WY)	N									
52. American Samoa (AS)	N									
53. Guam (GU)	N									
54. Puerto Rico (PR)	N									
55. U.S. Virgin Islands (VI)	N									
56. Northern Mariana Islands (MP)	N									
57. Canada (CAN)	N									
58. Aggregate other alien (OT)	X X X									
59. Subtotal	X X X									
60. Reporting entity contributions for Employee Benefit Plans	X X X									
61. Total (Direct Business)	X X X									
DETAILS OF WRITE-INS										
58001.	X X X									
58002.	X X X									
58003.	X X X									
58998. Summary of remaining write-ins for Line 58 from overflow page	X X X									
58999. TOTALS (Lines 58001 through 58003 plus 58998) (Line 58 above)	X X X									

(a) Active Status Counts:

L – Licensed or Chartered - Licensed insurance carrier or domiciled RRG

E – Eligible - Reporting entities eligible or approved to write surplus lines in the state

N – None of the above – Not allowed to write business in the state

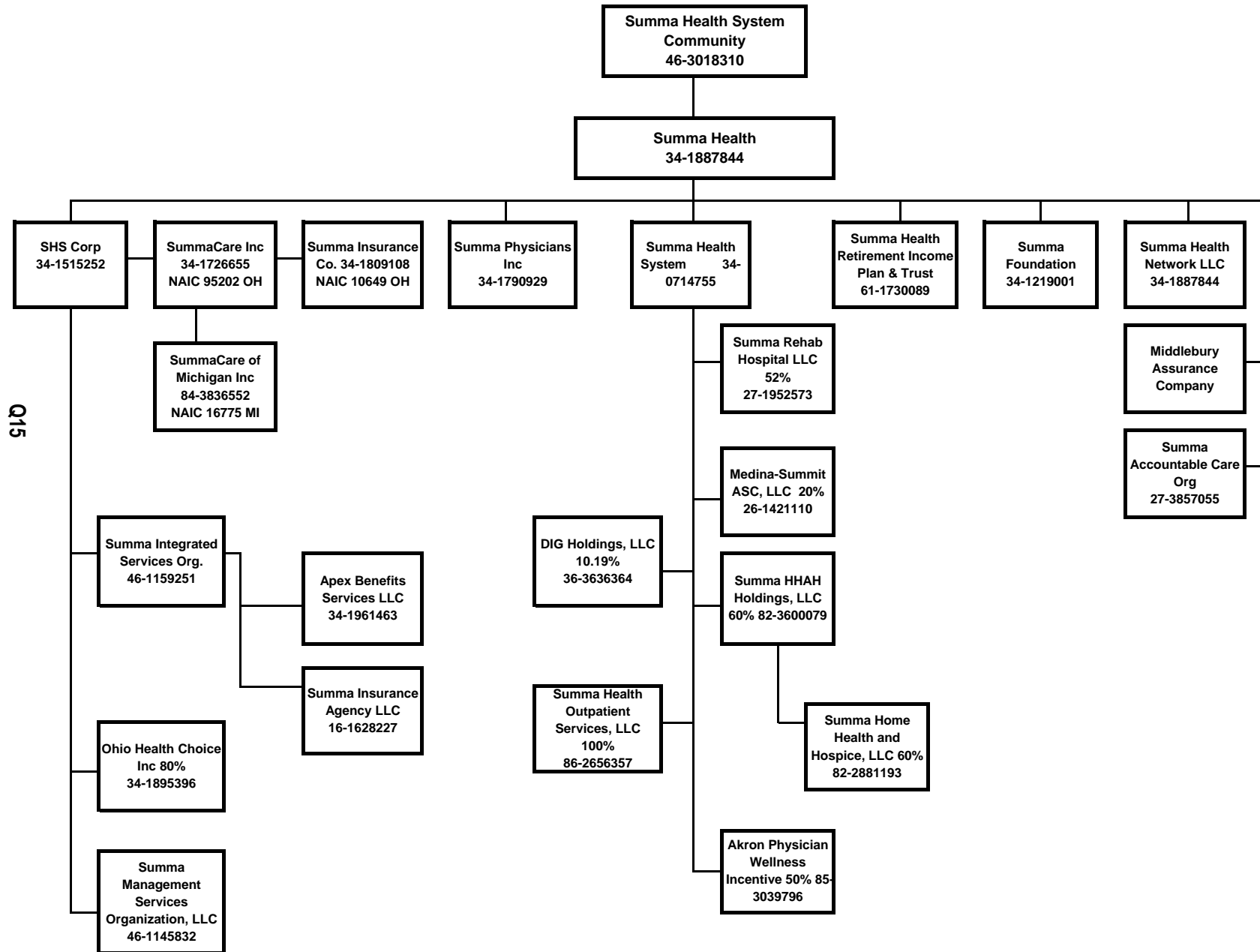
R – Registered - Non-domiciled RRGs

Q – Qualified - Qualified or accredited reinsurer

SCHEDULE Y - INFORMATION CONCERNING ACTIVITIES OF INSURER

MEMBERS OF A HOLDING COMPANY GROUP

PART 1 - ORGANIZATIONAL CHART



Q15

SCHEDULE Y

PART 1A - DETAIL OF INSURANCE HOLDING COMPANY SYSTEM

1	2	3	4	5	6	7	8	9	10	11	12	13	14	15	16
Group Code	Group Name	NAIC Company Code	ID Number	FEDERAL RSSD	CIK	Name of Securities Exchange if Publicly Traded (U.S. or International)	Names of Parent, Subsidiaries or Affiliates	Domiciliary Location	Relationship to Reporting Entity	Directly Controlled by (Name of Entity / Person)	Type of Control (Ownership, Board, Management, Attorney-in-Fact, Influence, Other)	If Control is Ownership Provide Percentage	Ultimate Controlling Entity(ies) / Person(s)	Is an SCA Filing Required? (Y/N)	*
016	SUMMA INSURANCE COMPANY	00000	34-1887844				SUMMA HEALTH	OH	UIP	SUMMA HEALTH SYSTEM COMMUNITY / HEALTHSPAN PARTNERS	Ownership		SUMMA HEALTH SYSTEM COMMUNITY / HEALTHSPAN PARTNERS	N	
		00000	34-1515252				SUMMA HEALTH SYSTEM CORPORATION	OH	UDP	SUMMA HEALTH	Ownership	100.0	SUMMA HEALTH SYSTEM COMMUNITY / HEALTHSPAN PARTNERS	N	
		10649	34-1809108				SUMMA INSURANCE COMPANY	OH	DS	SUMMACARE INC.	Ownership	100.0	SUMMA HEALTH SYSTEM COMMUNITY / HEALTHSPAN PARTNERS	N	
		95202	34-1726655				SUMMACARE INC.	OH	RE	SUMMA HEALTH SYSTEM CORP	Ownership	100.0	SUMMA HEALTH SYSTEM COMMUNITY / HEALTHSPAN PARTNERS	N	
		00000	16-1628227				SUMMA INSURANCE AGENCY LLC	OH	NIA	SUMMA INTEGRATED SERVICES ORGANIZATION	Ownership	100.0	SUMMA HEALTH SYSTEM COMMUNITY / HEALTHSPAN PARTNERS	N	
		00000	34-1961463				APEX BENEFITS SERVICES LLC	OH	NIA	SUMMA INTEGRATED SERVICES ORGANIZATION	Ownership	100.0	SUMMA HEALTH SYSTEM COMMUNITY / HEALTHSPAN PARTNERS	N	
		00000	34-1895396				OHIO HEALTH CHOICE INC	OH	NIA	SUMMA HEALTH SYSTEM CORPORATION	Ownership	80.0	SUMMA HEALTH SYSTEM COMMUNITY / HEALTHSPAN PARTNERS	N	
		00000	34-2020978				CONERSTONE MEDICAL SERVICES	OH	NIA	SUMMA HEALTH SYSTEM CORPORATION	Ownership	50.0	SUMMA HEALTH SYSTEM COMMUNITY / HEALTHSPAN PARTNERS	N	
		00000	34-1790929				SUMMA PHYSICIANS INC	OH	NIA	SUMMA HEALTH	Ownership	100.0	SUMMA HEALTH SYSTEM COMMUNITY / HEALTHSPAN PARTNERS	N	
		00000	34-1219001				SUMMA FOUNDATION	OH	NIA	SUMMA HEALTH	Ownership	100.0	SUMMA HEALTH SYSTEM COMMUNITY / HEALTHSPAN PARTNERS	N	
		00000	26-1421110				MEDINA-SUMMIT ASC LLC	OH	NIA	SUMMA HEALTH SYSTEM	Ownership	20.0	SUMMA HEALTH SYSTEM COMMUNITY / HEALTHSPAN PARTNERS	N	
		00000	34-1887844				SUMMA HEALTH NETWORK LLC	OH	NIA	SUMMA HEALTH	Ownership	100.0	SUMMA HEALTH SYSTEM COMMUNITY / HEALTHSPAN PARTNERS	N	
		00000	27-3857055				SUMMA ACCOUNTABLE CARE ORGANIZATION	OH	NIA	SUMMA HEALTH	Ownership	100.0	SUMMA HEALTH SYSTEM COMMUNITY / HEALTHSPAN PARTNERS	N	
		00000					MIDDLEBURY ASSURANCE COMPANY	CYM	IA	SUMMA HEALTH	Ownership	100.0	SUMMA HEALTH SYSTEM COMMUNITY / HEALTHSPAN PARTNERS	N	
		00000	46-1145832				SUMMA MANAGEMENT SERVICES ORGANIZATION, LLC	OH	NIA	SUMMA HEALTH SYSTEM CORPORATION	Ownership	100.0	SUMMA HEALTH SYSTEM COMMUNITY / HEALTHSPAN PARTNERS	N	0000001
		00000	46-1159251				SUMMA INTEGRATED SERVICES ORGANIZATION	OH	NIA	SUMMA HEALTH SYSTEM CORPORATION	Ownership	100.0	SUMMA HEALTH SYSTEM COMMUNITY / HEALTHSPAN PARTNERS	N	
00000	46-3018310				SUMMA HEALTH SYSTEM COMMUNITY	OH	UIP					SUMMA HEALTH SYSTEM COMMUNITY / HEALTHSPAN PARTNERS	N	0000002	

SCHEDULE Y

PART 1A - DETAIL OF INSURANCE HOLDING COMPANY SYSTEM

1	2	3	4	5	6	7	8	9	10	11	12	13	14	15	16
Group Code	Group Name	NAIC Company Code	ID Number	FEDERAL RSSD	CIK	Name of Securities Exchange if Publicly Traded (U.S. or International)	Names of Parent, Subsidiaries or Affiliates	Domiciliary Location	Relationship to Reporting Entity	Directly Controlled by (Name of Entity / Person)	Type of Control (Ownership, Board, Management, Attorney-in-Fact, Influence, Other)	If Control is Ownership Provide Percentage	Ultimate Controlling Entity(ies) / Person(s)	Is an SCA Filing Required? (Y/N)	*
3259	SUMMA INSURANCE COMPANY	00000	34-0714755				SUMMA HEALTH SYSTEM	OH	NIA	SUMMA HEALTH	Ownership	100.0	SUMMA HEALTH SYSTEM / HEALTHSPAN PARTNERS	N	
		00000	27-1952573				SUMMA REHAB HOSPITAL	OH	NIA	SUMMA HEALTH SYSTEM	Ownership	100.0	SUMMA HEALTH SYSTEM COMMUNITY / HEALTHSPAN PARTNERS	N	
		00000	82-3600079				SUMMA HHAH HOLDINGS, LLC	OH	NIA	SUMMA HEALTH SYSTEM	Ownership	60.0	SUMMA HEALTH SYSTEM COMMUNITY / HEALTHSPAN PARTNERS	N	
		00000	82-2881193				SUMMA HOME HEALTH AND HOSPICE	OH	NIA	SUMMA HHAH HOLDINGS, LLC	Ownership	60.0	SUMMA HEALTH SYSTEM COMMUNITY / HEALTHSPAN PARTNERS	N	
		16775	84-3836552				SUMMACARE OF MICHIGAN INC.	MI	DS	SUMMACARE INC.	Ownership	100.0	SUMMA HEALTH SYSTEM COMMUNITY / HEALTHSPAN PARTNERS	N	
		00000	36-3636364				DIG HOLDINGS	OH	NIA	SUMMA HEALTH SYSTEM	Ownership	10.2	SUMMA HEALTH SYSTEM COMMUNITY / HEALTHSPAN PARTNERS	N	
		00000	85-3039796				AKRON PHYSICIAN WELLNESS	OH	NIA	SUMMA HEALTH SYSTEM	Ownership	50.0	SUMMA HEALTH SYSTEM COMMUNITY / HEALTHSPAN PARTNERS	N	
		00000	61-1730089				SUMMA HEALTH RETIREMENT INC	OH	NIA	SUMMA HEALTH	Ownership	100.0	SUMMA HEALTH SYSTEM COMMUNITY / HEALTHSPAN PARTNERS	N	
		00000	86-2656357				SUMMA HEALTH OUTPATIENT SERVICES, LLC	OH	NIA	SUMMA HEALTH SYSTEM	Ownership	100.0	SUMMA HEALTH SYSTEM COMMUNITY / HEALTHSPAN PARTNERS	N	

Q16.1

Asterisk	Explanation
0000001	Middlebury Assurance Company is located in the Cayman Islands.
0000002	Summa Health System Community is the ultimate controlling entity with 100% ownership in Summa Health
0000003	

SUPPLEMENTAL EXHIBITS AND SCHEDULES INTERROGATORIES

The following supplemental reports are required to be filed as part of your statement filing. However, in the event that your company does not transact the type of business for which the special report must be filed, your response of NO to the specific interrogatory will be accepted in lieu of filing a "NONE" report and a bar code will be printed below. If the supplement is required of your company but is not being filed for whatever reason enter SEE EXPLANATION and provide an explanation following the interrogatory questions.

RESPONSE

1. Will the Medicare Part D Coverage Supplement be filed with the state of domicile and the NAIC with this statement?

No

Explanations:

Bar Codes:

Medicare Part D Coverage Supplement



16775202136500003

2021

Document Code: 365

OVERFLOW PAGE FOR WRITE-INS

STATEMENT AS OF **September 30, 2021** OF THE **SummaCare of Michigan, Inc.**
SCHEDULE A - VERIFICATION

Real Estate

	1 Year To Date	2 Prior Year Ended December 31
1. Book/adjusted carrying value, December 31 of prior year		
2. Cost of acquired:		
2.1 Actual cost at time of acquisition		
2.2 Additional investment made after acquisition		
3. Current year change in encumbrances		
4. Total gain (loss) on disposals		
5. Deduct amounts received on disposals		
6. Total foreign exchange change in book/adjusted carrying value		
7. Deduct current year's other-than-temporary impairment recognized		
8. Deduct current year's depreciation		
9. Book/adjusted carrying value at the end of current period (Lines 1 + 2 + 3 + 4 - 5 + 6 - 7 - 8)		
10. Deduct total nonadmitted amounts		
11. Statement value at end of current period (Line 9 minus Line 10)		

NONE

SCHEDULE B - VERIFICATION

Mortgage Loans

	1 Year To Date	2 Prior Year Ended December 31
1. Book value/recorded investment excluding accrued interest, December 31 of prior year		
2. Cost of acquired:		
2.1 Actual cost at time of acquisition		
2.2 Additional investment made after acquisition		
3. Capitalized deferred interest and other		
4. Accrual of discount		
5. Unrealized valuation increase (decrease)		
6. Total gain (loss) on disposals		
7. Deduct amounts received on disposals		
8. Deduct amortization of premium and mortgage interest points		
9. Total foreign exchange change in book value/recorded investment		
10. Deduct current year's other-than-temporary impairment recognized		
11. Book value/recorded investment excluding accrued interest at end of current period (Lines 1 + 2 + 3 + 4 + 5 + 6 - 7 - 8 + 9 - 10)		
12. Total valuation allowance		
13. Subtotal (Line 11 plus Line 12)		
14. Deduct total nonadmitted amounts		
15. Statement value at end of current period (Line 13 minus Line 14)		

NONE

SCHEDULE BA - VERIFICATION

Other Long-Term Invested Assets

	1 Year To Date	2 Prior Year Ended December 31
1. Book/adjusted carrying value, December 31 of prior year		
2. Cost of acquired:		
2.1 Actual cost at time of acquisition		
2.2 Additional investment made after acquisition		
3. Capitalized deferred interest and other		
4. Accrual of discount		
5. Unrealized valuation increase (decrease)		
6. Total gain (loss) on disposals		
7. Deduct amounts received on disposals		
8. Deduct amortization of premium and depreciation		
9. Total foreign exchange change in book/adjusted carrying value		
10. Deduct current year's other-than-temporary impairment recognized		
11. Book/adjusted carrying value at end of current period (Lines 1 + 2 + 3 + 4 + 5 + 6 - 7 - 8 + 9 - 10)		
12. Deduct total nonadmitted amounts		
13. Statement value at end of current period (Line 11 minus Line 12)		

NONE

SCHEDULE D - VERIFICATION

Bonds and Stocks

	1 Year To Date	2 Prior Year Ended December 31
1. Book/adjusted carrying value of bonds and stocks, December 31 of prior year	151,556	
2. Cost of bonds and stocks acquired	149,630	151,353
3. Accrual of discount		203
4. Unrealized valuation increase (decrease)		
5. Total gain (loss) on disposals		
6. Deduct consideration for bonds and stocks disposed of	149,766	
7. Deduct amortization of premium	463	
8. Total foreign exchange change in book/adjusted carrying value		
9. Deduct current year's other-than-temporary impairment recognized		
10. Total investment income recognized as a result of prepayment penalties and/or acceleration fees		
11. Book/adjusted carrying value at end of current period (Lines 1 + 2 + 3 + 4 + 5 - 6 - 7 + 8 - 9 + 10)	150,957	151,556
12. Deduct total nonadmitted amounts		
13. Statement value at end of current period (Line 11 minus Line 12)	150,957	151,556

SCHEDULE D - PART 1B

**Showing the Acquisitions, Dispositions and Non-Trading Activity
During the Current Quarter for all Bonds and Preferred Stock by NAIC Designation**

	1	2	3	4	5	6	7	8
NAIC Designation	Book/Adjusted Carrying Value Beginning of Current Quarter	Acquisitions During Current Quarter	Dispositions During Current Quarter	Non-Trading Activity During Current Quarter	Book/Adjusted Carrying Value End of First Quarter	Book/Adjusted Carrying Value End of Second Quarter	Book/Adjusted Carrying Value End of Third Quarter	Book/Adjusted Carrying Value December 31 Prior Year
BONDS								
1. NAIC 1 (a)	500,358			495	500,914	500,358	500,853	501,003
2. NAIC 2 (a)								
3. NAIC 3 (a)								
4. NAIC 4 (a)								
5. NAIC 5 (a)								
6. NAIC 6 (a)								
7. Total Bonds	500,358			495	500,914	500,358	500,853	501,003
PREFERRED STOCK								
8. NAIC 1								
9. NAIC 2								
10. NAIC 3								
11. NAIC 4								
12. NAIC 5								
13. NAIC 6								
14. Total Preferred Stock								
15. Total Bonds & Preferred Stock	500,358			495	500,914	500,358	500,853	501,003

(a) Book/Adjusted Carrying Value column for the end of the current reporting period includes the following amount of short-term and cash equivalent bonds by NAIC designation: NAIC 1 \$.....349,896; NAIC 2 \$.....0; NAIC 3 \$.....0; NAIC 4 \$.....0; NAIC 5 \$.....0; NAIC 6 \$.....0

QS102

SCHEDULE DA - PART 1**Short - Term Investments**

	1 Book/Adjusted Carrying Value	2 Par Value	3 Actual Cost	4 Interest Collected Year To Date	5 Paid for Accrued Interest Year To Date
9199999. Totals	349,896	X X X	349,896	810	

SCHEDULE DA - Verification**Short-Term Investments**

	1 Year To Date	2 Prior Year Ended December 31
1. Book/adjusted carrying value, December 31 of prior year	349,447	
2. Cost of short-term investments acquired	449	349,447
3. Accrual of discount		
4. Unrealized valuation increase (decrease)		
5. Total gain (loss) on disposals		
6. Deduct consideration received on disposals		
7. Deduct amortization of premium		
8. Total foreign exchange change in book/adjusted carrying value		
9. Deduct current year's other-than-temporary impairment recognized		
10. Book/adjusted carrying value at end of current period (Lines 1 + 2 + 3 + 4 + 5 - 6 - 7 + 8 - 9)	349,896	349,447
11. Deduct total nonadmitted amounts		
12. Statement value at end of current period (Line 10 minus Line 11)	349,896	349,447

SI04 Schedule DB - Part A Verification NONE

SI04 Schedule DB - Part B Verification NONE

SI05 Schedule DB Part C Section 1 NONE

SI06 Schedule DB Part C Section 2 NONE

SI07 Schedule DB - Verification NONE

SI08 Schedule E - Verification (Cash Equivalents) NONE

E01 Schedule A Part 2 NONE

E01 Schedule A Part 3 NONE

E02 Schedule B Part 2 NONE

E02 Schedule B Part 3 NONE

E03 Schedule BA Part 2 NONE

E03 Schedule BA Part 3 NONE

E04 Schedule D Part 3 NONE

SCHEDULE D - PART 4

**Show All Long-Term Bonds and Stocks Sold, Redeemed or Otherwise Disposed of
During the Current Quarter**

1 CUSIP Identification	2 Description	3 F o r e i g n	4 Disposal Date	5 Name of Purchaser	6 Number of Shares of Stock	7 Consideration	8 Par Value	9 Actual Cost	10 Prior Year Book/ Adjusted Carrying Value	Change in Book/Adjusted Carrying Value					16 Book/ Adjusted Carrying Value at Disposal Date	17 Foreign Exchange Gain (Loss) on Disposal	18 Realized Gain (Loss) on Disposal	19 Total Gain (Loss) on Disposal	20 Bond Interest/ Stock Dividends Received During Year	21 Stated Contractual Maturity Date	22 NAIC Designation, NAIC Designation Modifier and SVO Admini- strative Symbol	
										11 Unrealized Valuation Increase/ (Decrease)	12 Current Year's (Amortization)/ Accretion	13 Current Year's Other Than Temporary Impairment Recognized	14 Total Change in B./A.C.V. (11 + 12 - 13)	15 Total Foreign Exchange Change in B./A.C.V.								
Bonds - U.S. Governments																						
91282CCD1	US Treasury Note		07/16/2021	Huntington Bank	XXX	150,000	150,000	149,630			(462)		(462)		150,000				23	07/16/2021	1.A	
0599999	Subtotal - Bonds - U.S. Governments				XXX	150,000	150,000	149,630			(462)		(462)		150,000				23	XXX	XXX	
8399997	Subtotal - Bonds - Part 4				XXX	150,000	150,000	149,630			(462)		(462)		150,000				23	XXX	XXX	
8399998	Summary Item from Part 5 for Bonds (N/A to Quarterly)				XXX	XXX	XXX	XXX	XXX	XXX	XXX	XXX	XXX	XXX	XXX	XXX	XXX	XXX	XXX	XXX	XXX	XXX
8399999	Subtotal - Bonds				XXX	150,000	150,000	149,630			(462)		(462)		150,000				23	XXX	XXX	
8999998	Summary Item from Part 5 for Preferred Stocks (N/A to Quarterly)				XXX	XXX	XXX	XXX	XXX	XXX	XXX	XXX	XXX	XXX	XXX	XXX	XXX	XXX	XXX	XXX	XXX	XXX
8999999	Subtotal - Preferred Stocks				XXX		XXX													XXX	XXX	
9799998	Summary Item from Part 5 for Common Stocks (N/A to Quarterly)				XXX	XXX	XXX	XXX	XXX	XXX	XXX	XXX	XXX	XXX	XXX	XXX	XXX	XXX	XXX	XXX	XXX	XXX
9799999	Subtotal - Common Stocks				XXX		XXX													XXX	XXX	
9899999	Subtotal - Preferred and Common Stocks				XXX		XXX													XXX	XXX	
9999999	Total - Bonds, Preferred and Common Stocks				XXX	150,000	XXX	149,630			(462)		(462)		150,000				23	XXX	XXX	

E06 Schedule DB Part A Section 1 NONE

E07 Schedule DB Part B Section 1 NONE

E08 Schedule DB Part D Section 1 NONE

E09 Schedule DB Part D Section 2 - Collateral Pledged By Reporting Entity NONE

E09 Schedule DB Part D Section 2 - Collateral Pledged To Reporting Entity NONE

E10 Schedule DB Part E NONE

E11 Schedule DL - Part 1 - Securities Lending Collateral Assets NONE

E12 Schedule DL - Part 2 - Securities Lending Collateral Assets NONE

SCHEDULE E - PART 1 - CASH**Month End Depository Balances**

1 Depository	2 Code	3 Rate of Interest	4 Amount of Interest Received During Current Quarter	5 Amount of Interest Accrued at Current Statement Date	Book Balance at End of Each Month During Current Quarter			9 *
					6	7	8	
					First Month	Second Month	Third Month	
open depositories								
Huntington - General Operating Akron, Ohio					1,000,005	1,000,018	1,000,031	X X X
0199998 Deposits in0 depositories that do not exceed the allowable limit in any one depository (see Instructions) - open depositories	X X X	X X X						X X X
0199999 Totals - Open Depositories	X X X	X X X			1,000,005	1,000,018	1,000,031	X X X
0299998 Deposits in0 depositories that do not exceed the allowable limit in any one depository (see Instructions) - suspended depositories	X X X	X X X						X X X
0299999 Totals - Suspended Depositories	X X X	X X X						X X X
0399999 Total Cash On Deposit	X X X	X X X			1,000,005	1,000,018	1,000,031	X X X
0499999 Cash in Company's Office	X X X	X X X	X X X	X X X				X X X
0599999 Total Cash	X X X	X X X			1,000,005	1,000,018	1,000,031	X X X

SCHEDULE E - PART 2 - CASH EQUIVALENTS

Show Investments Owned End of Current Quarter

1	2	3	4	5	6	7	8	9
CUSIP	Description	Code	Date Acquired	Rate of Interest	Maturity Date	Book/Adjusted Carrying Value	Amount of Interest Due & Accrued	Amount Received During Year
<div style="border: 1px solid black; padding: 10px; display: inline-block;"> <h1 style="margin: 0;">N O N E</h1> </div>								
9999999 Total Cash Equivalents								