



RICK SNYDER
GOVERNOR

STATE OF MICHIGAN
DEPARTMENT OF NATURAL RESOURCES
LANSING



KEITH CREAGH
DIRECTOR

SUBMITTED: September 17, 2018
RESUBMITTED: October 15, 2018
RESUBMITTED: November 13, 2018



MEMORANDUM TO THE NATURAL RESOURCES
COMMISSION

Subject: Fisheries Order 200.19
Statewide Trout, Salmon, Whitefish, Lake Herring, and Smelt Regulations

Authority:

The Natural Resources and Environmental Protection Act, 1994 PA 451, authorizes the Director and the Commission to issue Orders to regulate the taking of fish in the waters of this state.

Discussion and Background:

Fisheries Order 200 governs statewide fishing regulations for trout, salmon, lake whitefish, lake herring, and smelt. Fisheries Division is proposing several regulation changes including a reduction in the daily possession limit for lake trout and splake in Lake Huron lake trout management unit MH-1, a removal of the restriction on scented material in some inland waters, six modifications to current regulations, and seven removals from the Order.

Lake Huron MH-1 Possession Limit Change

We are proposing a change to reduce the possession limit on lake trout and splake from three (3) to two (2) lake trout or splake combined for the MH-1 area of Lake Huron. Because the lake trout resource in MH-1 is shared by the tribes and the State of Michigan per the 2000 Great Lakes Consent Decree, the fishery is managed with annual harvest limits set for each agency. Michigan sport anglers exceeded their harvest limit in 2016 and 2017. No corrective action was implemented as ongoing discussions between the parties were occurring whereby separate harvest limits in MH-1 and MH-2 would be combined for a single harvest limit. The state has worked within the Consent Decree process and with the parties to find a reasonable solution that would not unnecessarily penalize recreational fishers, who are responsible for such a low amount of mortality on this valuable fish stock, and provide concessions to tribal fishers while maintaining a need for biological protection of our joint fisheries. Unfortunately, there was no agreement among the parties in the resolution of the exceedance of the state's harvest limit. It is the responsibility of the state, therefore, to take action to address the exceedance of the harvest limit. The proposed change is expected to reduce lake trout harvest by state sport anglers and keep the state from exceeding the 2019 harvest limit. Without such action, we will likely exceed our harvest limit in 2019. The reduction in the possession limit was approved unanimously at the October 2019 Lake Huron Citizen Fishery Advisory Committee meeting.

Given this reality, an adjustment in fishing regulations (reducing the daily possession limit) is necessary to reduce harvest of lake trout from MH-1 by State-licensed recreational anglers during the 2019 fishing season. Therefore, we are recommending the following change for regulations governing fishing for lake trout in MH-1 be enacted to prevent an additional year of overharvest:

123

1. Reduce the lake trout and splake daily possession limit from (3) lake trout and splake per day to no more than two (2) in combination.

Lake Huron MH-2 Possession Limit Change

Because of the reduction in the possession limit for lake trout and splake in MH-1 (above), there has been a request to add a new proposal to increase the possession limit for lake trout and splake from (3) to (4) in MH-2 of Lake Huron. Managers have indicated that an adjustment in fishing regulations (increasing the daily possession limit) in MH-2 will simply offset the reduction being imposed in MH-1 and result in negligible impact to the lake trout population. The change may result in some additional lake trout and splake being harvested in MH-2; however, the regulation is still conservative and will continue to protect the fishery resources in MH-2.

Therefore, we are recommending the following change for regulations governing fishing for lake trout in MH-2 be enacted:

1. Increase the lake trout and splake daily possession limit from (3) lake trout and splake per day to no more than four (4) in combination.

Scented Material

The Order currently states that it is unlawful to use or possess live bait, dead or preserved bait, organic or processed food, or scented material on Type D lakes and Gear Restricted Streams. A change is proposed for this Order involving the use of scented material. The intent of the regulation originally was to reduce gut-hooking associated with mortality on these waters. The specific restriction on scented material relates to the time period around the establishment of scented plastic baits in the 1990s and fears that scented materials are engulfed by fish similarly to live bait. Anglers have been contacting staff over the past few years concerned that it's nearly impossible now to find soft plastic baits without scent. After a brief literature review, staff found two studies which reported that scented materials do not increase post-release hooking mortality when compared with unscented artificial lures. Therefore, the recommendation is to remove the phrase, "or scented material" from all Type D lakes and Gear Restricted Streams where artificial lures are allowed. The prohibition will be maintained on all flies only stream sections as the use of scented material goes against the spirit of the special regulations there.

Modifications

The following list of waters has been recommended for changes from one regulation type to another or there are changes to the boundaries as indicated below:

1. Change the minimum size limit for brook trout on all non-classified streams from eight inches to seven inches. A few years ago, the minimum size limit for brook trout was reduced from eight inches to seven inches on all Type 1 trout streams. The non-classified streams inadvertently remained at eight inches for all trout without exception. Reducing the size limit on brook trout will result in less regulatory complexity for brook trout anglers by implementing the same seven-inch minimum size limit regulation on a majority of the state's inland waters.
2. Change Dukes Lake (Chippewa) from Type A to B. This stocked trout fishery has other species like panfish for anglers to fish for. This change will expand the lake to fishing opportunities all year.
3. Change Muskegon River (Newaygo and Muskegon) from Type 4 to Type 3. This would expand brown trout harvest opportunities to open all year while increasing the minimum size limit on brown trout from 10" to 15" which will protect them to larger sizes.

4. Change Boardman River (Grand Traverse) from Type 3 to Type 4. Changing the designation to Type 4 will result in reducing the size limits for brook and brown trout while also reducing the possession season for both. The Sabin Dam will also be removed this summer which is the upstream boundary for the Type 3 regulation. The upstream limit of the new Type 4 will be moved upstream to Beitner Road which will help reduce potential confusion with the boundary location.
5. Change Arcadia Lake (Manistee) Type F upstream boundary from "inlet of Bowens Creek" to M-22. The current boundary is confusing for anglers and changing it to M-22 will help clarify the boundary.
6. Change the downstream boundary of the Type 4 trout regulations of the Pigeon River (Cheboygan) from Mouth of Mullet Lake to East Mullet Road. The boundary limit has been confusing for anglers so changing it to East Mullet Road will help clarify the boundary.
7. Change upstream boundary of the Type 4 Maple River (Cheboygan and Emmet) stream reach from Dam to Woodland Road as the dam is planned for removal. The new boundary will be easy for anglers to identify.

Removals

The following waterbodies are recommended for removal from the Order and will now be regulated under general regulations:

1. Remove Camp Lake (Iron) as Type B. Low survival of stocked trout and abundance of warmwater species make management for trout ineffective.
2. Remove Caspian Pond (Iron) as Type B. Habitat no longer suitable for trout according to recent survey information.
3. Remove Fortune Lake Chain (Iron) as Type B. Low survival of stocked trout and abundance of warmwater species make management for trout ineffective.
4. Remove Squaw Lake (Marquette) as Type B. Lack of trout and abundance of warmwater species make management for trout ineffective.
5. Remove Dickerson Creek (Ionia and Montcalm) as Type 4. Recent survey information indicates that Dickerson Creek does not support trout; therefore, the management strategy will be changed to focus on warmwater species.
6. Remove Hemlock Lake (Hillsdale) as Type C. Trout stocking was discontinued in 2004 and trout are no longer part of the fishery. Therefore, the Type C regulation is no longer warranted.
7. Remove Marjella (Clear) Lake (Kent) as Type C. Trout stocking was discontinued in 2003 and trout are no longer part of the fishery. Therefore, the Type C regulation is no longer warranted.

The proposed changes for the Order were discussed with the Coldwater Resources Steering Committee, Warmwater Resources Steering Committee, and at the Division's Coffee and Conversation spring meetings where anglers were supportive of the changes. Law enforcement staff has also indicated their support for the changes.

Issue Pros and Cons

The lake trout and splake possession limit change in MH-1 will reduce the likelihood of State anglers exceeding the harvest limit in 2019. The increase in possession limits for lake trout and splake in MH-2 will create more harvest opportunities for anglers. Expanding the use of scented materials will increase angling opportunities. Modifying regulations can benefit anglers as managers tweak management actions

14f

based upon new information from surveys or angler input. Managers change boundaries in cases when the boundary is set for removal or a new boundary is needed to benefit anglers. Waters are removed from more restrictive trout regulations when survey information indicates that the habitat is no longer suitable for trout. Some anglers may not like the changes in direction on some waters proposed above and some trout anglers are not supportive of measures to increase harvest of trout in any waters.

Biological

Lake trout are a shared resource that requires annual assessments for the purpose of making appropriate regulatory changes whenever deemed necessary. These regulations will maintain adequate protection of the resource for future users. The regulation change in MH-1 is needed to adhere to the harvest limit applicable to the State recreational fishery and the change in MH-2 will simply offset the change to MH-1 for anglers. The restriction on the use and possession of scented material is no longer valid based upon the biology and changes are warranted. Managers use biological survey information to review regulations and changes can be made to greater protect the resource when needed or removed when there is no longer a biological reason to maintain some regulations.

Social

Great Lake sport anglers are important partners that the division often engages when regulatory changes based upon science are needed. The Lake Huron Citizens Fishery Advisory Committee is supportive of the regulation change in MH-1, but they also recognize that there will be negative reactions from the recreational fishing community. Anglers will benefit from the removal of the scented material restrictions on the proposed waters given there is no longer a biological reason for retaining them. Anglers are also supportive of retaining the scented material restrictions on the flies only Gear Restricted Streams to maintain the tradition of fly fishing in its purest form. Anglers are generally supportive of regulation changes when survey information indicates that conditions are no longer favorable to managing coldwater species in some places. Some anglers may not agree with all the changes proposed above and may prefer the current regulations be retained.

Economic

The Department does not expect the proposed changes to have any significant budgetary or personnel implications.

Recommendation:

Relevant Divisions have contributed to the preparation of this Order. This Order was submitted for information on October and November Natural Resources Commission meetings. This item appeared on the Department's October 2 and October 30 calendars and may be eligible for approval on December 13, 2018.



James Dexter, Chief
Fisheries Division



Gary Hagler, Chief
Law Enforcement Division



Russ Mason, Ph.D., Chief
Wildlife Division



Deb Begalle, Chief
Forest Resources Division

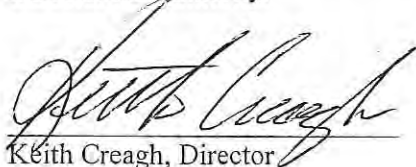


Ronald A. Olson, Chief
Parks and Recreation Division



William O'Neil
Natural Resources Deputy

I have analyzed and discussed these recommendations with staff and concur as to matters over which the Director has authority.



Keith Creagh, Director

12/13/2018
Date

FISHERIES ORDER

Statewide Trout, Salmon, Whitefish, Lake Herring, and Smelt Regulations Order 200.19

By authority conferred on the Natural Resources Commission and the Department of Natural Resources by Part 487 of 1994 PA 451, MCL 324.48701 to 324.48740, it is ordered on December 13, 2018, the following section(s) of the Fisheries Order shall read effective April 1, 2019, as follows:

The following regulations are established for trout, salmon, whitefish, lake herring, and smelt:

LAKE TROUT MANAGEMENT UNITS – Great Lakes

Lake Michigan

MM-1 is bounded on the southeast and south by the Michigan-Wisconsin boundary in Green Bay and on the east by a north-south line beginning near Fairport in Delta County at Longitude 086°40'W and extending south to the Wisconsin-Michigan border.

MM-2 is bounded on the west by MM-1, on the east by a north-south line beginning about 4 miles west of Seul Choix Point in Schoolcraft County at Longitude 086°00'W and extending southward to Latitude 45°20'N, and on the south by an east-west line at Latitude 45°20'N that extends west from Longitude 086°00'W to the Michigan-Wisconsin boundary.

MM-3 is bounded on the west by a north-south line from the shore about 4 miles west of Seul Choix Point in Schoolcraft County at Longitude 86°00'W and extending southward to its intersection with Latitude 45°10' N, on the east by the Mackinac Bridge, and on the south by an east-west line from Longitude 086°00'W at Latitude 45°10' N and extending eastward to the shore about 4 miles north of Eastport in Antrim County.

MM-4 includes all waters of Grand Traverse Bay south of Latitude 45°10'N.

MM-5 is bounded on the west by the Michigan-Wisconsin boundary, on the north by an east-west line beginning on the Michigan-Wisconsin boundary at Latitude 45°20'N and extending eastward along said latitude to Longitude 086°00'W, then southward along said longitude to Latitude 45°10'N, then eastward along said latitude to its intersection with the west shore of Leelanau County, and on the south by an east-west line beginning near Arcadia in Manistee County at Latitude 44°30'N and extending west to the Michigan-Wisconsin boundary.

MM-6 is bounded on the west by the Michigan-Wisconsin boundary, on the north by MM-5, and on the south by an east-west line from Little Sable Point in Oceana County at Latitude 43°40'N and extending westward to the Michigan-Wisconsin boundary.

MM-7 is bounded on the west by the Michigan-Wisconsin boundary, on the north by MM-6, and on the south by an east-west line from the Michigan shore about 4 miles north of Holland in Ottawa County at Latitude 42°50'N and extending westward to the Michigan-Wisconsin boundary.

MM-8 is bounded on the west by the Michigan-Wisconsin boundary and the Michigan-Illinois boundary, on the north by MM-7, and on the south by the Michigan-Indiana boundary.

Lake Huron

MH-1 is bounded on the west by the Mackinac Bridge, on the north by an east west line from the village of Detour in Chippewa County at Latitude 46°00'N to the west shore of Drummond Island and an east-west line from the east shore of Drummond Island at Latitude 46°00'N to the international

boundary, and on the east and south by a line beginning where Longitude 083°30'W intersects the international boundary near Drummond Island in Chippewa County and extending southward along said longitude to Latitude 45°30'N, then extending westward along said latitude to Longitude 083°40'W, then extending southward along said longitude to shore about 3.5 miles southeast of Adams Point in Presque Isle County.

MH-2 is bounded on the north by MH-1, on the east by the international boundary, and on the south by an east-west line extending from the shore about one mile north of Black River in Alcona County at Latitude 44°50'N and extending eastward along said latitude to the International boundary.

MH-3 is bounded on the north by MH-2, on the east by the international boundary, and on the south by a line beginning on the shore on Au Sable Point in Iosco County at Latitude 44°20'N and extending eastward along said latitude to Longitude 083°10'W, then southward along said longitude to Latitude 44°10'N, then eastward along said latitude to the international boundary.

MH-4 is bounded on the north by MH-3 and on the east by a north-south line beginning on the shore about 2.6 miles southeast of Point aux Barques light in Huron County at Latitude 44°00'N and extending eastward along said latitude to Longitude 082°40'W, then northward along said longitude to the southern boundary with MH-3 at Latitude 44°10'N.

MH-5 is bounded on the west by MH-4, on the north MH-3, on the east by the international boundary, and on the south by an east-west line beginning on the shore in the village of Forester in Sanilac County at Latitude 43°30'N and extending eastward along said latitude to the international boundary.

MH-6 is bounded on the north by MH-5, on the east by the international boundary, and on the south by the Blue Water Bridge in St. Clair County at Latitude 43°00'N.

Lake Superior

MI-1 is bounded on the west by the Michigan-Minnesota boundary, on the north by the international boundary, and on the south by a line beginning on the Minnesota boundary at Latitude 47°40'N extending eastward along said latitude to Longitude 088°30'W then northward along said longitude to Latitude 47°50'N then eastward along said latitude to Longitude 088°00'W then northward along said longitude to Latitude 48°00'N then eastward along said latitude to the international boundary.

MI-2 is bounded on the west by the Michigan-Minnesota and the Michigan-Wisconsin boundaries, on the north by MI-1, and on the east by a north-south line extending from the shore about 2.6 miles southwest of Fourteen Mile Point in Ontonagon County northward at Longitude 089°10'W to the southern border of MI-1 at Latitude 47°40'N.

MI-3 is bounded on the west by MI-2, on the north by MI-1, and on the east by a line extending northward from the shore about 1.4 miles east of Copper Harbor in Keweenaw County at Longitude 087°50'W to Latitude 47°30'N then eastward along said latitude to Longitude 087°40'W then northward along said longitude to the international border.

MI-4 is bounded on the west by MI-3, on the north by the international boundary, and on the southeast and east by a line beginning on the shore at Pine River Point in Marquette County at Longitude 087°50'W and extending northward along said longitude to Latitude 47°00'N then eastward along said latitude to Longitude 087°30'W then northward along said longitude to Latitude 47°10'N then eastward along said latitude to Longitude 087°20'W then northward along said longitude to Latitude 47°20'N then eastward along said latitude to Longitude 087°00'W then northward to the international boundary.

MI-5 is bounded on the west and north by MI-4 and on the east by a north-south line beginning on Laughing Fish Point in Alger County at Longitude 087°00'W and extending northward to Latitude 47°20'N.

MI-6 is bounded on the west by MI-4 and MI-5, on the north by the international boundary, and on the east by a north-south line beginning on Au Sable Point in Alger County at Longitude 086°10'W and extending northward to the international boundary.

MI-7 is bounded on the west by MI-6, on the north by the international boundary, and on the east by a north-south line beginning about four miles east of Crisp Point in Luce County at Longitude 085°20'W and extending northward to the international boundary.

MI-8 is bounded on the west by MI-7, on the north and east by the international boundary with the easternmost border formed by a line from Brush Point in Chippewa County to Point aux Pins Ontario in the upper St. Marys River.

SECTION I. Seasons--General

Except as otherwise noted in the following sections of this Order, the fishing and possession seasons on non-designated trout streams and all other inland waters, the Saginaw River, and the Great Lakes and connecting waters are open for the entire year for all trout, salmon, whitefish, and Lake Herring.

Exceptions to the general possession season:

- 1) The possession season for Lake Trout and Splake shall be January 1 - September 30 in MM-1 through MM-5 in Lake Michigan.
- 2) The possession season for Lake Trout and Splake shall be open for the entire year in MM-6 through MM-8 in Lake Michigan.
- 3) The possession season for Lake Trout and Splake shall be January 1 - September 30 in MH-1 and MH-2 in Lake Huron.
- 4) The possession season for Lake Trout and Splake shall be open for the entire year in MH-3 through MH-6 in Lake Huron.

SECTION II. Lake Whitefish and Lake Herring

Size and daily possession limits for Lake Whitefish and Lake Herring

On all waters, there is no minimum size limit for Lake Whitefish (*Coregonus clupeaformis*) or Lake Herring (*Coregonus artedii*). The daily possession limit shall be twelve (12) fish in any combination, except the daily possession limit shall be five (5) fish in any combination on Chicagon Lake and Lake Ottawa (Iron County).

SECTION III. Rainbow Smelt

Size, daily possession limits, season, and gear for Rainbow Smelt

On all waters, there is no minimum size limit for Rainbow Smelt (*Osmerus mordax*). The daily harvest/possession limit for smelt on all waters of the state shall be 2 gallons. The harvest season is open all year for hook-and-line. See FO-219 for spear, bow and arrow, or crossbow seasons and FO-229 for netting seasons.

SECTION IV. Arctic Grayling

Size, daily possession limits, season, and gear for Arctic Grayling

A person shall not at any time take, attempt to take, or possess any Arctic Grayling (*Thymallus tricolor*) taken from any waters over which this state has jurisdiction.

SECTION V. Trout and Salmon—Great Lakes and Connecting Waters

Size limits

Minimum size limit shall be 10 inches for all species of trout and salmon, except as follows:

1) Brook Trout

Lake Superior

- a) MI-1 through MI-8: the minimum size limit for Brook Trout shall be 20 inches.

2) Lake Trout

Lake Michigan

- a) MM-1 through MM-8: the minimum size limit shall be 15 inches.

Lake Huron

- a) MH-1 through MH-6: The minimum size limit shall be 15 inches.

Lake Superior

- a) MI-1 through MI-8: The minimum size limit shall be 15 inches, except that the daily possession limit shall not include more than one (1) Lake Trout 34 inches or greater.

3) Splake

Lake Michigan

- a) MM-1 through MM-8: the minimum size limit shall be 15 inches.

Lake Huron

- a) MH-1 through MH-6: The minimum size limit shall be 15 inches.

Lake Superior

- a) MI-1 through MI-8: The minimum size limit shall be 15 inches.

Daily possession limit

Five (5) trout and salmon in any combination, except that the daily possession limit shall not include more than three (3) Brook Trout, Brown Trout, Rainbow Trout*, Lake Trout, Splake, or Atlantic Salmon. Additional exceptions are:

1) Lake Superior

- a) The daily possession limit may include up to one (1) Brook Trout, except that the daily possession limit shall be zero (0) for Brook Trout within 4.5 miles of Isle Royale (waters of the Isle Royale National Park).
- b) The daily possession limit may include up to five (5) Lake Trout in MI-4, MI-5, MI-6, MI-7, and MI-8.

2) St. Marys River

- a) The daily possession limit may include up to ten (10) Pink Salmon from the last Saturday in April - September 30.

3) Lake Michigan

- a) The daily possession limit may include up to two (2) Lake Trout in management units MM-1, MM-2, MM-3, MM-4, and MM-5.

4) Lake Huron

- a) The daily possession limit may include up to two (2) Lake Trout and Splake, in any combination in management unit MH-1.
- b) The daily possession limit may include up to four (4) Lake Trout and Splake, in any combination in management unit MH-2 to be effective May 1, 2019.

*Note: For the purpose of this Order Rainbow Trout refers to both Rainbow Trout and Steelhead.

SECTION VI: Trout and Salmon in Inland Lakes

On those inland lakes designated below as Types A, B, C, D and E, the minimum size limits for Chinook Salmon, Coho Salmon, Pink Salmon, and Atlantic Salmon shall be as follows:

<u>Species</u>	<u>Minimum size limit</u>
Chinook Salmon	10 inches
Coho Salmon	10 inches
Pink Salmon	10 inches
Atlantic Salmon	15 inches

Notwithstanding any other Order of the Department, for any inland lake not classified below the fishing and possession seasons are open for the entire year to the taking of trout, the minimum size limit shall be 8 inches except, the daily possession limit shall be five (5) trout**, and all types of natural bait and artificial lures may be used.

**Note: The daily possession limit shall not include more than three (3) trout 15 inches or greater.

Type A Lakes

- Fishing season: last Saturday in April - September 30.
- Possession season: last Saturday in April - September 30.
- Tackle: natural baits except minnows (dead or alive) and artificial lures may be used.
- Daily Possession Limit: five (5) trout, except that the daily possession limit shall not include more than three (3) trout 15 inches or greater.
- Size limits:

<u>Species</u>	<u>Minimum size limit</u>
Brook Trout	10 inches
Brown Trout	12 inches
Rainbow Trout	12 inches
Splake	12 inches
Lake Trout	15 inches

Following is a listing of Type A lakes. Type A lakes are managed strictly for trout and, as such, are designated trout lakes.

<u>Type A Designated Trout Lakes</u>	
<u>County</u>	<u>Lake Name</u>
Alger	Addis Lakes (T46N, R20W, S33)
Alger	Bette's Pond
Alger	Brian's Pond
Alger	Cox Pond (T46N, R19W, S13)
Alger	Grand Marais Lake
Alger	Hike Lake
Alger	Irwin Lake
Alger	Rock Lake
Alger	Rock River Pond
Alger	Sitka Lake (T48N, R13W, S9)
Alger	Sullivan Lake (T49N, R15W, S21)
Alger	Trueman Lake
Alger	West John's Lake (T48N, R13W, S26)
Chippewa	Highbanks Lake
Chippewa	Naomikong Lake

Type A Designated Trout Lakes	
County	Lake Name
Chippewa	Naomikong Pond
Crawford	Bright Lake
Crawford	Kneff Lake
Crawford	Shupac Lake
Delta	Bear Lake
Delta	Carr Lake (T43N, R18W, S36)
Delta	Carr Ponds (T43N, R18W, S26)
Delta	Kilpecker Pond (T43N, R18W, S11)
Delta	Norway Lake
Delta	Wintergreen Lake (T43N, R18W, S36)
Delta	Zigmaul Pond
Gogebic	Castle Lake
Gogebic	Cornelia Lake
Gogebic	Mishike Lake
Houghton	Penegor Lake
Iron	Deadman's Lake (T41N, R32W, S5 & 8)
Iron	Fortune Pond (T43N, R33W, S25)
Iron	Killdeer Lake
Iron	Madelyn Lake
Iron	Skyline Lake
Iron	Spree Lake
Keweenaw	No Name Pond (T57N, R31W, S8)
Luce	Bennett Springs Lake
Luce	Brockies Pond (T46N, R11W, S1)
Luce	Bullhead Lake (T49N, R11W, S34)
Luce	Dairy Lake
Luce	Dillingham Lake
Luce	Holland Lake
Luce	Jack Lake
Luce	Little Whorl Lake
Luce	Pratt Lake
Luce	Silver Creek Pond
Luce	Spring Creek Pond
Luce	Syphon Lake
Luce	Trout Lake
Luce	Ward Lake
Luce	Wolverine Lake
Luce	Youngs Lake
Mackinac	Castle Rock Pond
Mackinac	Millecoquins Pond
Marquette	Bedspring Lake
Marquette	Clear Lake
Marquette	Cranberry Lake (T45N, R30W, S10)
Marquette	Just Lake
Marquette	Island Lake (T45N, R30W, S14)
Marquette	Log Lake
Marquette	Moccasin Lake
Marquette	Section 13 Lake
Marquette	Silver Lake (T46N, R24W, S32)

Type A Designated Trout Lakes	
County	Lake Name
Marquette	Slough Lake
Marquette	Swanzy Lake
Oscoda	Crater Lake
Schoolcraft	Kings Pond
Schoolcraft	Lost Lake
Schoolcraft	Spring Pond

Type B Lakes

- Fishing season: open for the entire year.
- Possession season: open for the entire year.
- Tackle: all types of natural bait and artificial lures may be used.
- Daily Possession Limit: five (5) trout, except that the daily possession limit shall not include more than three (3) trout 15 inches or greater.
- Size limits:

Species	Minimum size limit
Brook Trout	10 inches
Brown Trout	12 inches
Rainbow Trout	12 inches
Splake	12 inches
Lake Trout	15 inches

Following is a listing of Type B lakes.

Type B Trout Lakes	
County	Lake Name
Alcona	Reid Lake
Alcona	South Hoist Lake
Alger	Ackerman Lake
Alger	Cheryl's Pond (T44N, R19W, S25)
Alger	Kay's Pond
Alger	Mirror Lake
Alger	North (Upper) Shoe Lake (T48N, R17W, S36)
Alger	Sawaski Pond (T44N, R19W, S14)
Antrim	Green Lake
Baraga	Roland Lake
Barry	Deep Lake
Cass	Birch Lake
Cass	Hemlock Lake
Charlevoix	Louise Lake
Cheboygan	Silver Lake
Cheboygan	Twin Lake #1
Cheboygan	Weber Lake
Chippewa	Dukes Lake
Emmet, Charlevoix	Walloon Lake
Gogebic	Beatons Lake
Gogebic	Finger Lake
Gogebic	Imp Lake
Gogebic	Little Duck Lake

Type B Trout Lakes	
County	Lake Name
Gogebic	Moon Lake
Grand Traverse	Duck Lake
Grand Traverse	Green Lake
Houghton	Emily Lake
Houghton	Lake on Three
Iron	Chicagon Lake
Iron	Ellen Lake
Iron	Golden Lake
Iron	Long Lake
Iron	Lake Ottawa
Kalkaska	Bear Lake
Kalkaska	Big Blue Lake
Kalkaska	North Blue Lake
Luce	Camp 8 Lake
Luce	Pretty lake
Luce	Tank Lake
Marquette	Bass Lake (T45N, R26W, S29)
Marquette	Brocky Lake
Marquette	Cedar Lake (T47N, R27W, S11)
Marquette	Crooked Lake
Marquette	Forestville Basin (T48N, R25W, S8)
Marquette	Little Brocky Lake
Marquette	Little Shag Lake
Marquette	Perch Lake (T46N, R29W, S8)
Marquette	Silver Lake Basin
Marquette	Twin Lake (T45N, R30W, S23)
Montmorency	Avalon Lake
Montmorency	Clear Lake
Montmorency	Lake Fifteen
Montmorency	McCormick Lake
Ogemaw	Lake George (T21N, R2E, S18)
Ontonagon	Courtney Lake
Ontonagon	Mirror Lake
Oscoda	Loon Lake
Otsego	Big Chub Lake
Otsego	Bridge Lake
Otsego	Heart Lake
Otsego	Pickerel Lake
Presque Isle	Bear Den Lake (T33N, R2E, S32)
Schoolcraft	Banana Lake
Schoolcraft	Bear Lake (Nineteen Lake, T44N, R18W, S27)

Type C Lakes

- Fishing season: open for the entire year.
- Possession season: open for the entire year.
- Tackle: all types of natural bait and artificial lures may be used.
- Daily Possession Limit: five (5) trout, except that the daily possession limit shall not include more than three (3) trout 15 inches or greater.
- Size limits:

<u>Species</u>	<u>Minimum size limit</u>
Brook Trout	8 inches
Brown Trout	8 inches
Rainbow Trout	8 inches
Splake	8 inches
Lake Trout	8 inches

Following is a listing of Type C lakes.

Type C Trout Lakes	
County	Lake Name
Antrim	Bellaire Pond
Berrien	Singer Lake
Branch	Cary Lake
Branch	Lake Lavine
Cass	Harwood Lake
Grand Traverse	Sand Lake #1
Hillsdale	Bear Lake
Hillsdale	Bird Lake
Jackson	Farwell Lake (T4S, R2W, S25/36)
Jackson	Swains Lake
Kalamazoo	Little Paw Paw Lake (T3S, R12W, S31)
Kalamazoo	Ruppert Lake
Kalkaska	Big Guernsey Lake
Kalkaska	Big Twin Lake
Kalkaska	Starvation Lake
Kent	Lime Lake
Leelanau	Lime Lake
Lenawee	Allens Lake (T5S, R2E, S10)
Lenawee	Deep Lake
Montcalm	Marl Lake
Montcalm	Nevins Lake
Muskegon	Half Moon Lake
Newaygo	Condon Lake
Oakland	Maceday Lake (T3N, R9E, S7)
Ontonagon	Trout Creek Pond (T47N, R38W, S14)
Osceola	Center Lake
Presque Isle	Trout Creek Pond (T3S, R5E, S17)
Van Buren	Shafer Lake

Type D Lakes

- Fishing season: last Saturday in April - September 30.
- Possession season: last Saturday in April - September 30.
- Tackle: only artificial lures may be used. It shall be unlawful to use or possess live bait, dead or preserved bait, organic or processed food on any of the waters or on shore.
- Daily Possession Limit: one (1) trout.
- Size limits:

Species	Minimum size limit
Brook Trout	15 inches
Brown Trout	15 inches
Rainbow Trout	15 inches
Splake	15 inches
Lake Trout	15 inches

Following is a listing of Type D lakes. Type D lakes are managed for trout and, as such, are designated trout lakes.

Type D Designated Trout Lakes	
County	Lake Name
Baraga	Lake Alice
Cheboygan	Hemlock Lake (T3N, R1W, S34, 35)
Gogebic	Redboat Lake
Houghton	Clear Lake
Houghton	Perrault Lake
Iron	Forest Lake
Iron	Timber Lake
Keweenaw	Lost Lake
Luce	Deer Lake
Luce	Moon Lake
Luce	Sid Lake
Marquette	South Kidney Lake (T45N, R26W, S28)
Marquette	Pauls Lake, North
Marquette	Pauls Lake, South
Marquette	Rockingchair Lake, N., (T49N, R28W, S10)
Marquette	Rockingchair Lake, S., (T49N, R28W, S10)
Marquette	Strawberry Lake
Otsego	Ford Lake (T32N, R1W, S8)
Otsego	Lost Lake
Otsego	North Twin Lake
Otsego	Section Four Lake (T32N, R1W, S4)
Otsego	South Twin Lake
Otsego	West Lost Lake (T32N, R1W, S3)
Schoolcraft	Ned's Lake
Schoolcraft	Twilight Lake

Type E Lakes

- Fishing season: open for the entire year.
- Possession season: open for the entire year.
- Tackle: all types of natural bait and artificial lures may be used.
- Daily Possession Limit: three (3) trout.
- Size limits:

<u>Species</u>	<u>Minimum size limit</u>
Brook Trout	15 inches
Brown Trout	15 inches
Rainbow Trout	15 inches
Splake	15 inches
Lake Trout	15 inches

Following is a listing of Type E lakes.

Type E Trout Lakes	
County	Lake Name
Alger	Grand Sable Lake
Antrim	Torch Lake
Antrim, Grand Traverse	Elk Lake
Barry, Kalamazoo	Gull Lake
Benzie	Crystal Lake
Charlevoix	Lake Charlevoix
Cheboygan	Tower Pond (from dam upstream to M-68)
Leelanau	North Lake Leelanau
Leelanau	Big Glen Lake
Luce	Belle Lake 1
Luce	Peanut Lake
Marquette	Lake Arfelin
Marquette	Sporely Lake
Roscommon	Higgins Lake

Type F Lakes (Drowned River-Mouth Lakes)**NOTE:**

- 1) The following regulations shall apply in each drowned river-mouth lake identified below from the upstream limit of the lake to its mouth at Lake Michigan.
- Fishing season: open for the entire year.
 - Possession season:
 - 1) For all species of trout and salmon, open for the entire year.
 - Tackle: all types of natural baits and artificial lures may be used.
 - Daily Possession Limit: five (5) trout and salmon in any combination, except:
 - 1) Excluding Chinook Salmon and Coho Salmon, the daily possession limit shall not include more than three (3) of any one species of trout or salmon.
 - 2) The daily possession limit may include up to five (5) Chinook Salmon or Coho Salmon in any combination.
 - Size limits: minimum size limit: 10 inches for all species of trout and salmon.

Following is a listing of Type F lakes.

Type F Trout Lakes		
County	Lake Name	Upstream Limit
Allegan	Kalamazoo Lake/Silver Lake	US 31
Benzie	Betsie Lake	M-22
Manistee	Arcadia Lake	M-22
Manistee	Manistee Lake	Railroad Bridge below M-55 (T21N, 16W, S6)
Manistee	Portage Lake	
Mason	Pere Marquette Lake	Old 31 Highway
Muskegon	Duck Lake	Nestrom Rd.
Muskegon	Mona Lake	US 31
Muskegon	Muskegon Lake	M-120
Muskegon	White Lake	Business Route US 31
Oceana	Pentwater Lake	Long Bridge Road (B15)
Oceana	Silver Lake	
Oceana	Stony Lake	Inlet of Stony Creek (Scenic Dr., T13N, R18W, S5)
Ottawa	Lake Macatawa	River Ave.
Ottawa	Pigeon Lake	Lakeshore Dr.

SECTION VII. Trout and Salmon on Inland Streams

NOTES:

- 1) Fisheries Order 210 provides a listing of all designated trout streams in Michigan. Some of the streams listed in FO-210 appear in FO-200 (see section VII) as Types 2, 3, 4 or gear restricted streams. Type 1 streams are not listed in FO-200. If a stream name appears in FO-210, but not in FO-200 (section VII), then Type 1 stream regulations apply to that stream.
- 2) Notwithstanding any other Order of the Department, for any inland stream not classified below the fishing and possession seasons are open for the entire year to the taking of trout and salmon, the minimum size limit shall be 8 inches (except 7 inches for Brook Trout), the daily possession limit shall be five (5) trout and salmon in any combination***, and all types of natural bait and artificial lures may be used.
- 3) On all waters open to possession, the daily possession limit may include up to five (5) Chinook Salmon or Coho Salmon, in any combination.
- 4) "Artificial flies" means any commonly accepted single hooked wet and dry flies, streamers, and nymphs without spinner, spoon, scoop, lip or any other fishing lure or bait attached. The fly or leader may be weighted but no weight shall be attached to the fly or to the terminal tackle in a manner that allows the weight to be suspended from or below the hook.
- 5) "Chumming" means luring or attracting or attempting to lure or attract fish by scattering organic material into the water.
- 6) Chumming with organic materials shall be prohibited on all Type 1, 2, 3, and 4 streams.

- 7) On stream Types 1 through 4, size limits for Brook Trout and Brown Trout vary by stream type and may be found in the regulation section for each stream type. For all other species of trout and salmon, size limits shall be as follows:

<u>Species</u>	<u>Minimum size limit</u>
Chinook Salmon	10 inches
Coho Salmon	10 inches
Pink Salmon	10 inches
Atlantic Salmon	10 inches
Lake Trout	10 inches
Rainbow Trout	10 Inches
Splake	10 Inches

***NOTE: The daily possession limit shall not include more than three (3) trout 15 inches or greater.

Type 1 Streams

- Fishing season: last Saturday in April - September 30.
- Possession season: last Saturday in April - September 30.
- Tackle: artificial lures and all types of natural bait may be used.
- Chumming with organic materials is prohibited on all Type 1 streams.

Daily Possession Limit: five (5) trout and salmon in any combination, except that the daily possession limit shall not include more than three (3) trout 15 inches or greater.

Additional exception:

1) Platte River

- a) The daily possession limit shall be one (1) Rainbow Trout from the Upper (Hatchery) Platte River Weir downstream to Lake Michigan.

- Size limits:

<u>Species</u>	<u>Minimum size limit</u>
Brook Trout	7 inches
Brown Trout	8 inches

Type 2 Streams

- Fishing season: last Saturday in April - September 30.
- Possession season: last Saturday in April - September 30.
- Tackle: artificial lures and all types of natural bait may be used.
- Chumming with organic materials is prohibited on all Type 2 streams.

Daily Possession Limit: five (5) trout and salmon in any combination, except that the daily possession limit shall not include more than three (3) trout 15 inches or greater.

- Size limits:

<u>Species</u>	<u>Minimum size limit</u>
Brook Trout	10 inches
Brown Trout	12 inches

Following is a listing of Type 2 streams.

Type 2 Streams			
County	Stream Name	Upstream Boundary	Downstream Boundary
Alcona, Oscoda	Au Sable River, Mainstream	Evans Rd. (McKinley Bridge)	4001 Bridge
Allegan	Silver Creek	M-89 Bridge (T1N, R11W, S26)	Confluence with Kalamazoo River
Antrim, Crawford, Otsego	Manistee River		Co. Rd. 612
Baraga, Houghton	Sturgeon River	US-41	Prickett Dam
Barry	Coldwater River	M-43 Bridge (T4N, R8W, S16)	Freeport Rd. Bridge (T5N, R9W, S36)
Barry	Unnamed tributary on North Bank Coldwater River (T4N, R7W, S18)		
Cass	Dowagiac Creek	McKenzie Rd. (T5S, R14W, S31)	M-62
Cheboygan, Otsego	Pigeon River	Old Vanderbilt Rd.	Elk Hill Campground Horse Trail
Crawford	Au Sable River, Mainstream	Business Loop 75 (James St.)	Burton's Landing
Gogebic	Black River	US-2	Rainbow Falls
Lake	Pine River	Elm Flats PAS (T20N, R12W, S2)	Confluence with Tippy Dam Backwaters
Marquette	Carp River	Deer Lake Dam (T48N, R27W, S27)	Morgan Creek
Ontonagon	Middle Br. Ontonagon River		Agate Falls
St. Joseph	Curtis Creek and all tributaries		

Type 3 Streams

- Fishing season: open for the entire year.
- Possession season: open for the entire year.
- Tackle: artificial lures and all types of natural bait may be used.
- Chumming with organic materials is prohibited on all Type 3 streams.

Daily Possession Limit: five (5) trout and salmon in any combination, except that the daily possession limit shall not include more than three (3) trout 15 inches or greater.

- Size limits:

Species	Minimum size limit
Brook Trout	15 inches
Brown Trout	15 inches

Following is a listing of Type 3 streams.

Type 3 Streams			
County	Stream Name	Upstream Boundary	Downstream Boundary
Alcona	Pine River	F-41	Lake Huron

Type 3 Streams			
County	Stream Name	Upstream Boundary	Downstream Boundary
Allegan	Black River	Confluence of North & South Branch Black River	Lake Michigan
Allegan	North Branch Black River	111 th Ave. (T1N, R16W, S3)	Confluence with mainstream
Allegan	Kalamazoo River	Calkins Dam (T2N, R14W, S15)	US-31
Alpena	Thunder Bay River	Ninth St. Dam	Lake Huron
Antrim	Elk River	Power Dam below Elk Lake	Lake Michigan
Arenac	Rifle River	Sage Lake Rd. (T23N, R3E, S22)	Lake Huron
Baraga	Falls River	US-41 Hwy	Lake Superior
Baraga	Sturgeon River	Prickett Dam	Lake Superior
Berrien	St. Joseph River	Indiana State Line	Lake Michigan
Cheboygan	Cheboygan River	Cheboygan Dam	Lake Huron
Emmet	Carp Lake River	Bridge (T39N, R4W, S32)	Lake Michigan
Gogebic	Big Carp River	A point 100 yards downstream from Bathtub Falls (T50N, R45W, S1, NE¼, NW¼)	Lake Superior
Gogebic	Black River	Rainbow Falls (T49N, R46W, S10)	Lake Superior
Gogebic	Little Carp River	Traders Falls (T50N, R45W, S2)	Lake Superior
Gogebic	Maple Creek	Bridge (T49N, R46W, S18)	Lake Superior
Gogebic	Ohman Creek	Co. Rd. 505	Lake Superior
Gogebic	Presque Isle River	Manabesho Falls	Lake Superior
Houghton	Big Traverse River	Gay-Lake Linden Rd.	
Houghton	Otter River	Confluence of North Branch & West Branch Otter River	Sturgeon River
Houghton	Pilgrim River	US-41	Lake Superior
Houghton	Salmon-Trout River	Redridge Dam	Lake Superior
Huron	Bird Creek		
Huron	Pigeon River		
Huron	Pinnebog River		
Iosco	Au Sable River	Foot Dam	Lake Huron
Iosco	East Branch Au Gres River (Whitney Drain)	M-55 (T22N, R6E, S21)	Saginaw Bay
Iosco	Van Etten Creek	Van Etten Lake	Lake Huron
Iosco	Tawas River		
Isabella, Midland	Chippewa River	Outlet of Lake Isabella, (T15N, R6W, S35)	Confluence with the Tittabawassee River (T14N, R2E, S21)
Leelanau	Crystal River	Fisher Dam	Lake Michigan
Leelanau	Leland River	None	Lake Michigan
Manistee	Bear Creek	Co. Road 600	Confluence of Manistee River
Manistee	Manistee River	Tippy Dam	Railroad Bridge below M-55 (T21N, R16W, S6)

Type 3 Streams			
County	Stream Name	Upstream Boundary	Downstream Boundary
Marquette	Carp River	Confluence of Morgan Creek (T47N, R25W, S4)	Lake Superior
Marquette	Chocolay River	Confluence of Big Creek (T47N, R24W, S9)	Lake Superior
Mason	Lincoln River	Confluence of North & South Branches of Lincoln River (T19N, R17W, S32)	Lake Michigan
Mason	Pere Marquette River	Reek Rd. (Indian Bridge)	Old US-31
Mason	Sable River	Hamlin Lake Dam	Lake Michigan
Midland, Saginaw	Tittabawassee River	Sanford Dam	Confluence with Saginaw River
Muskegon	Cedar Creek	River Rd.	Confluence of Muskegon River
Muskegon	Muskegon River	Croton Dam	M-120
Ontonagon	Big Iron River	Koshak Rd. Bridge (T49N, R43W, S2)	Lake Superior
Ontonagon	West Branch Big Iron River	Burnt Dam Bridge (T50N, R44W, S36)	Confluence with Big Iron River
Ontonagon	Little Iron River	Nonesuch Falls (T50N, R43N, S1)	
Ontonagon	East Branch Ontonagon River	M-28	
Ontonagon	Firesteel (including East & West Branches)	M-26	
Ontonagon	Middle Branch Ontonagon River	Agate Falls	
Ontonagon	Misery River	Bridge (T53N, R37W, S15)	
Ontonagon	Ontonagon River		
Ontonagon	West Branch Ontonagon River	Confluence with Victoria Hydro Station Tail Race (T50N, R39W, S29, SE1/4 of SW1/4)	
Ontonagon	East Sleeping River	Railroad trestle (T53N, R38W, S25)	Lake Superior
Presque Isle	Swan River	US-23 Bridge	Lake Huron
Presque Isle	Trout River	Dam (T35N, R5E, S17)	Lake Huron
Saginaw	Saginaw River		Saginaw Bay
St. Clair	Black River	Private Dam in Port Huron State Game Area	Confluence with St. Clair River
Van Buren	South Branch Black River	Hamilton St. Bridge, (T2S, R16W, S1)	Confluence with Mainstream (T1S, R17W, S2)

Type 4 Streams

- Fishing season: open for the entire year.
 - Possession season:
 - 1) For Brook Trout, Brown Trout and Atlantic Salmon: the last Saturday in April - September 30.
 - 2) For all other species of trout and salmon, open for the entire year.
 - Tackle: artificial lures and all types of natural bait may be used.
 - Chumming with organic materials is prohibited on all Type 4 streams.
- Daily Possession Limit: five (5) trout and salmon in any combination, except that the daily possession limit shall not include more than three (3) trout 15 inches or greater.
- Additional exceptions are:
- 1) Little Manistee River
 - a) The daily possession limit shall be one (1) Rainbow Trout from 300 feet downstream of the Little Manistee Weir down to Manistee Lake.
 - 2) Platte River
 - a) The daily possession limit shall be one (1) Rainbow Trout from the Upper (Hatchery) Platte River Weir downstream to Lake Michigan.
- Size limits:

<u>Species</u>	<u>Minimum size limit</u>
Brook Trout	7 inches
Brown Trout	10 inches

Following is a listing of Type 4 streams.

Type 4 Streams			
County	Stream Name	Upstream Boundary	Downstream Boundary
Alcona, Iosco	Au Sable River, Mainstream	Alcona Dam	South Branch River
Alcona	Black River	Confluence with North Branch Black River	Lake Huron
Alger	Anna River	Railroad Bridge (T46N, R19W, S14)	Lake Superior
Alger	Au Train River	Powerhouse below M-94	Lake Superior
Alger	Hurricane River		Lake Superior
Alger	Laughing Whitefish River	Forks (T47N, R22W, S22)	Lake Superior
Alger	Miner's River	Miner's Falls	
Alger	Rock River	Railroad Bridge (T47N, R21W, S22)	Lake Superior
Alger	Sable Creek		
Alger	Sucker River	Old Grand Marais/Seney Rd. Bridge	
Allegan	Middle Branch Black River	Confluence of Spring Brook Creek (T1N, R15W, S22)	Confluence with Black River, Mainstream
Allegan	Gun River, Mainstream	122nd Ave., (T2N, R11W, S12)	US-131 bridge (T1N, R11W, S18)
Allegan	Pine Creek Tributary	101 st Ave.	Confluence with Pine Creek
Allegan	Swan Creek	109 th Ave. (T1N, R14W, S7)	Confluence with Kalamazoo River (T2N, R14W, S9)

Type 4 Streams			
County	Stream Name	Upstream Boundary	Downstream Boundary
Allegan	Rabbit River, Mainstream	US-131 Bridge, (T4N, R11W, S31)	Confluence with Kalamazoo River (T3N, R15W, S16)
Alpena	Devils River	US-23 Bridge	Lake Huron
Alpena	Long Lake Creek	None	Lake Huron
Antrim	Elk River Bypass	Up to the Bypass Dam	Lake Michigan
Antrim	Grass River (including Clam Lake and Clam River)	Lake Bellaire	Torch Lake
Antrim	Intermediate River	Intermediate Dam	Lake Bellaire
Antrim, Charlevoix	Jordan River	Graves Crossing	Lake Charlevoix
Baraga	Huron River	Big Eric's Bridge (T52N, R30W, S35)	
Baraga	Ravine River	Sicotte Rd.	
Baraga	Silver River	Silver Falls	
Baraga	Slate River	Slate Falls	
Barry	Bassett Creek	Baker Lake	Confluence with Thornapple River
Barry	Cedar Creek	Sources	M-37 (T2N, R8W, S9)
Barry, Kent	Coldwater River	Freeport Rd.	Confluence with Thornapple River
Barry	Turner Creek	T3N, R10W, S23	Confluence with Baker Creek (T3N, R10W, S9)
Benzie	Betsie River	Kurick Rd.	M-22
Benzie	Otter Creek	Otter Lake outlet (T27N, R14W, S13)	Lake Michigan
Benzie	Platte River	US-31 bridge at Veteran's Park	Lake Michigan
Berrien	Blue Creek		
Berrien	Dowagiac River	Niles Dam at Pucker St. (T7S, R17W, S13)	Confluence with St. Joseph River
Berrien	Galien River, Mainstream		Lake Michigan
Berrien	Galien River, South Branch		Confluence with the Galien River
Branch, St. Joseph	Prairie River, mainstream	Bowers Rd. (T8S, R7W, S4)	MacKale Rd. (T7S, R9W, S8)
Calhoun	Nottawa Creek	T3S, R5W, S35	Calhoun Co. line (T4S, R8W, S31)
Calhoun, Jackson	South Branch Rice Creek	Concord Rd. (Jackson Co.)	Confluence of Rice Creek and Kalamazoo River (T2S, R6W, S25)
Cass	Dowagiac Drain		
Cass	Dowagiac River, Mainstream	To source	Pucker St. (T7S, R17W, S13)
Charlevoix	Boyne River	P.H. Dam	Lake Charlevoix

34

Type 4 Streams			
County	Stream Name	Upstream Boundary	Downstream Boundary
Charlevoix, Emmet	Bear River	Walloon Lake	Lake Michigan
Cheboygan, Emmet	Maple River	Woodland Rd.	Mouth
Cheboygan	Mill Creek		Lake Huron
Cheboygan	Pigeon River	Pine Grove Campground Stairs	East Mullet Rd.
Cheboygan	Sturgeon River	Afton Rd. (Webb Rd.)	Mouth at Burt Lake
Chippewa	Albany Creek	Bridge below lamprey weir	Lake Huron
Chippewa, Mackinac	Carp River, mainstream		Lake Huron
Chippewa	Halfaday Creek	Lakeshore Dr.	Lake Superior
Chippewa	Pendill's Creek	Second Dam (T47N, R4W, S28)	Lake Superior
Chippewa, Mackinac	Pine River	H-40 Bridge	Lake Huron
Crawford, Oscoda	Au Sable River, mainstream	McMasters Bridge Rd. (McMasters Bridge)	Rainbow Bend power line (T26N, R2E, S4)
Delta	Bark River	9 Rd. (Section line between T38N, R24W, S20, 29)	Lake Michigan
Delta	Big Fishdam River	Co. Rd. 2222 Bridge (T41N, R18W, S9)	Lake Michigan
Delta	Days River	M-35 Bridge	Lake Michigan
Delta, Dickinson	Ford River	Northland Truck Trail (T43N, R27W, S35) Dickinson Co.	Lake Michigan
Delta	Rapid River	Co. Rd. S-15 (T42N, R21W, S19)	Lake Michigan
Delta	Sturgeon River	Co. Rd. 442 Bridge (T42N, R20W, S13)	Lake Michigan
Delta	Tacoosh River	29th Lane (County Rd. G-24)	Lake Michigan
Delta	Whitefish River	38th Rd.(USFS 2236)	US-2 Bridge in T41N, R21W, S28
Grand Traverse	Boardman River	Beitner Rd.	Lake Michigan
Houghton	Elm River	Rd. Bridge between (T53N, R36W, S3, 10)	
Houghton	Little Elm River	Agate Beach Rd. (T53N, R36W, S6)	
Houghton	South Branch Elm River	Bridge (T54N, R36W, S29, 32)	
Houghton	Graveraet River	Mouth of Deer Creek (T45N, R36W, S2)	
Houghton	Trap Rock River	Cemetery Rd. (T56N, R32W, S29)	
Ionia, Montcalm	Fish Creek	Sidney Rd.	Confluence with Maple River
Ionia, Montcalm	Prairie Creek	East Muskrat Rd.	Confluence with Grand River
Ionia	Sebewa Creek and all tributaries		

Type 4 Streams			
County	Stream Name	Upstream Boundary	Downstream Boundary
Kalamazoo	Augusta Creek	Little Gilkey Lake and Fair Lakes Outlets	Knappen Mills Dam
Kalamazoo	Portage Creek		Kilgore Rd. (T3S, R11W, S3)
Kalkaska, Wexford	Manistee River	Sunset Trail Rd. (CCC Bridge T26N, R6W, S26)	M-115
Kalkaska	Rapid River	Antrim (Rugg) Pond	Torch River
Kalkaska, Antrim	Torch River	Torch Lake	Lake Skegemog
Kent	Nash Creek		Confluence with Rogue River
Kent	Ball Creek		Confluence with Rogue River
Kent	Buck Creek		Confluence with Grand River
Kent	Rogue River		Confluence with Grand River
Keweenaw	Eagle River	Dam, Eagle River Village	
Keweenaw	Fanny Hooe River	Lake Fanny Hooe	
Keweenaw	Gratiot River	Bridge (T57N, R32W, S19, 20)	Lake Superior
Keweenaw	Silver Creek	Falls (T58N, R32W, S26)	Lake Superior
Keweenaw	Silver River	M-26	Lake Superior
Keweenaw	Tobacco River	Mouth of Black Brook Creek	
Lake, Manistee	Little Manistee River	Johnson Rd. (Johnson's Bridge)	Manistee Lake
Lake, Mason	Pere Marquette River	Upstream edge of the boat ramp at Rainbow Rapids	Reek Rd. (Indian Bridge)
Leelanau	Shalda Creek	Little Traverse Lake (T29N, R13W, S10)	Lake Michigan (T29N, R13W, S4)
Luce	Blind Sucker River	Blind Sucker Flooding Dam	
Luce	Two-Hearted River	Co. Rd. 407 (High Bridge)	Lake Superior
Mackinac	Black River	Peters Truck Trail Footbridge	
Mackinac	Brevoort River	Brevoort Lake	
Mackinac	Crow River	Outfall Of Amadon Pond	
Mackinac, Schoolcraft	Milakokia River	Inland-Limestone Co. Railroad Bridge (T41N, R13W, S1)	Lake Michigan
Mackinac	Millecoquins River	H-40 Bridge	Lake Michigan
Macomb	Clinton River	Yates Dam above Dequindre Rd.	Lake St. Clair
Macomb	North Branch Clinton River	32 Mile Rd.	Confluence with Clinton River
Manistee	Manistee River	Hodenpyl Reservoir	Red Bridge
Marquette	Big Garlic River	Forks (T49N, R27W, S12)	Lake Superior
Marquette	Harlow Creek	Railroad Bridge (T49N, T26W, S24)	Lake Superior
Marquette	Iron River	Lake Independence Dam	Lake Superior
Mason	Big South Branch Pere Marquette River	Confluence Beaver and Winnepesaug Creeks	Confluence with Pere Marquette River

Type 4 Streams			
County	Stream Name	Upstream Boundary	Downstream Boundary
Mason	Sable River	Pole Bridge (T19N, R15W, S3)	Hamlin Lake
Mecosta, Montcalm, Newaygo	Little Muskegon River		
Mecosta, Osceola	Muskegon River	US-10 (T18N, R8W, S34)	DNRE River Bend Bluffs PAS (T15N, R9W, S31)
Menominee	Big Cedar River	Veterans Memorial Park Dam (T38N, R26W, S9)	Lake Michigan
Menominee	Walton Creek	Westmann Dam (T35N, R25W, S18)	Lake Michigan
Montmorency	Thunder Bay River	Atlanta Dam	Sucker Creek confluence upstream of Hillman Pond
Muskegon	White River	Hesperia Dam	Lake Michigan
Newaygo	Tamarack Creek		
Oceana	Pentwater River	Hart Dam	Confluence with Pentwater Lake (Long Bridge Rd. or B15)
Oceana	North Branch Pentwater River	Oceana Dr.	Confluence with Pentwater River, Mainstream
Oceana	North Branch White River	Arthur Rd.	Confluence with White River
Ontonagon	Union River	South Boundary Rd. (T51N, R42W, S22)	Lake Superior
Oscoda	Au Sable River, mainstream	Mio Dam	Mio power line (T26N, R3E, S7)
Ottawa	Crockery Creek	Moore Rd.	Confluence with Grand River
Ottawa, Muskegon	North Branch Crockery Creek, Mainstream	Kenowa Ave. (T10N, R13W, S36)	Confluence with Crockery Creek, Mainstream at Ravenna
Ottawa	Sand Creek		
Presque Isle	Ocqueoc River	Barnhart Lake	Lake Huron
Schoolcraft	Manistique River	Papermill Dam	
St. Clair	Belle River		
St. Clair	Mill Creek		Confluence with Black River
St. Joseph	Mill Creek and tributaries	Preston Rd. (T7S, R12W, S7)	Impoundment (T7S, R12W, S32)
St. Joseph	Unnamed tributary (T6S, R10W, S26)		
Van Buren	Brush Creek except Reynolds Lake Drain	63 rd Ave.	Confluence with Paw Paw River

37

Type 4 Streams			
County	Stream Name	Upstream Boundary	Downstream Boundary
Van Buren	South Branch Paw Paw River, West Branch Paw Paw River, and (Gates Drain and tributaries		Rail road bridge downstream of I-94 (T3S, R14W, S14)
Van Buren	Pine Creek		101st Ave. (T1N, R12W, S32)
Wayne	Huron River	Belleville Lake Dam	Lake Erie

Gear Restricted Streams

NOTE:

- 1) On any stream reach that is being managed under gear restrictions, it shall be unlawful to use or possess live bait, dead or preserved bait, organic or processed food on any of the waters or on shore.

Au Sable River, mainstream (Crawford County) from Burton's Landing to South Wakeley Bridge Rd. (Wakeley Bridge)

- Fishing season: open for the entire year.
- Possession season: closed for the entire year; except that for children under the age of 12-years old the possession season is open for the entire year.
- Tackle: artificial flies only; use or possession of scented material prohibited in the water or on shore.
- Daily Possession Limit: zero (0) trout; except that for children under the age of 12-years old the daily possession limit shall be one (1) trout.
- Size limits: not applicable; except that for children under the age of 12-years old the minimum size limit shall be 8 inches and the maximum size limit shall be 12 inches for all species of trout. Trout less than 8 inches or greater than 12 inches must be released.
- Mileage: 9.0 miles.

Au Sable River, mainstream (Crawford County) from South Wakeley Bridge Rd. (Wakeley Bridge) to McMasters Bridge Rd. (McMasters Bridge)

- Fishing season: open for the entire year.
- Possession season: last Saturday in April - September 30 for Brook Trout and Brown Trout; open for the entire year for Rainbow Trout.
- Tackle: artificial lures only.
- Daily Possession Limit: two (2) trout; except that the daily possession limit shall not include more than one (1) trout 18 inches or greater.
- Size limits: minimum size limit: Brook Trout – 10 inches; Brown Trout – 18 inches; Rainbow Trout – 10 inches.
- Mileage: 8.0 miles.

Au Sable River, mainstream (Oscoda County) from Mio power line (T26N, R3E, S7) to Evans Rd. (McKinley Bridge)

- Fishing season: open for the entire year.
- Possession season: last Saturday in April - September 30 for Brook Trout and Brown Trout; open for the entire year for Rainbow Trout.
- Tackle: artificial lures only.
- Daily Possession Limit: two (2) trout; except that the daily possession limit shall not include more than one (1) trout 18 inches or greater.
- Size limits: minimum size limit: Brook Trout – 7 inches; Brown Trout – 18 inches; Rainbow Trout – 10 inches.
- Mileage: 15.0 miles.

Au Sable River, North Branch (Crawford County) from Sheep Ranch to confluence with Mainstream

- Fishing season: open for the entire year.
- Possession season: last Saturday in April - September 30 for Brook Trout and Brown Trout; open for the entire year for Rainbow Trout.
- Tackle: artificial flies only; use or possession of scented material prohibited in the water or on shore.
- Daily possession limit: two (2) trout; except that the daily possession limit shall not include more than one (1) trout 18 inches or greater.
- Size limits: minimum size limit: Brook Trout – 10 inches; Brown Trout – 18 inches; Rainbow Trout – 10 inches
- Mileage: 20.7 miles

Au Sable River, South Branch (Crawford County) from Chase Bridge Rd. (Chase Bridge) to Lower High Banks

- Fishing season: open for the entire year.
- Possession season: closed for the entire year; except that for children under the age of 12-years old the possession season is open for the entire year.
- Tackle: artificial flies only; use or possession of scented material prohibited in the water or on shore.
- Daily possession limit: zero (0) trout; except that for children under the age of 12-years old the daily possession limit shall be one (1) trout.
- Size limits: not applicable; except that for children under the age of 12-years old the minimum size limit shall be 8 inches and the maximum size limit shall be 12 inches for all species of trout. Trout less than 8 inches or greater than 12 inches must be released.
- Mileage: 4.3 miles.

Au Sable River, South Branch (Crawford County) from Lower High Banks to confluence with Mainstream

- Fishing season: open for the entire year.
- Possession season: last Saturday in April - September 30 for Brook Trout and Brown Trout; open for the entire year for Rainbow Trout.
- Tackle: artificial flies only; use or possession of scented material prohibited in the water or on shore.
- Daily possession limit: two (2) trout; except that the daily possession limit shall not include more than one (1) trout 18 inches or greater.
- Size limits: minimum size limit: Brook Trout – 10 inches; Brown Trout – 18 inches; Rainbow Trout – 10 inches.
- Mileage: 11.5 miles.

Black River (Otsego and Montmorency counties) from Tin Shanty Bridge Rd. to the Town Corner Lake Stairs (T32N, R1E, S31 SE/SE)

- Fishing season: open for the entire year.
- Possession season: last Saturday in April - September 30 for Brook Trout; open for the entire year for Brown Trout and Rainbow Trout.
- Tackle: artificial lures only.
- Daily possession limit: five (5) trout; except that the daily possession limit shall not include more than two (2) Brook Trout.
- Size limits: minimum size limit: Brook Trout – 10 inches; Brown Trout – 8 inches; Rainbow Trout – 10 inches.
- Mileage: 4.4 miles.

Cooks Run (Iron County) from US Forest Hwy 16 to Confluence with South Branch Paint River

From the last Saturday in April - September 30, this reach of stream shall be managed under Type 2 regulations, except the minimum size limit for Brook Trout shall be 7 inches.

From October 1 - the Friday before the last Saturday in April, this reach of stream shall be managed under gear restricted regulations as follows:

- Fishing season: October 1 - the Friday before the last Saturday in April.
- Possession season: closed; except that for children under the age of 12-years old the possession season is open.
- Tackle: artificial flies only; use or possession of scented material prohibited in the water or on shore.
- Daily possession limit: zero (0) trout; except that for children under the age of 12-years old the daily possession limit shall be one (1) trout.
- Size limits: not applicable; except that for children under the age of 12-years old the minimum size limit shall be 8 inches and the maximum size limit shall be 12 inches for all species of trout. Trout less than 8 inches or greater than 12 inches must be released.
- Mileage: 4.5 miles.

Duck Creek (Gogebic County) from Railroad Bridge (T44N, R39W, S16 SE1/4 SE1/4) to Confluence with Middle Branch Ontonagon River

- Fishing season: open for the entire year.
- Possession season: last Saturday in April - September 30 for Brook Trout and Brown Trout; open for the entire year for Rainbow Trout.
- Tackle: artificial lures only.
- Daily possession limit: two (2) trout.
- Size limits: minimum size limit: all species of trout – 10 inches.
- Mileage: 6.5 miles.

Escanaba River (Delta County) from Boney Falls Dam to Mouth of Silver Creek (T40N, R23W, S11)

- Fishing season: open for the entire year.
- Possession season: last Saturday in April - September 30 for Brook Trout and Brown Trout; open for the entire year for Rainbow Trout.
- Tackle: artificial lures only.
- Daily possession limit: two (2) trout.
- Size limits: minimum size limit: Brook Trout – 10 inches; Brown Trout – 12 inches; Rainbow Trout – 12 inches.
- Mileage: 14.2 miles.

Fox River (Schoolcraft County) from Fox River State Forest Campground (T46N, R14W, S11) to M-28

From the last Saturday in April - September 30, this reach of stream shall be managed under Type 1 regulations.

From October 1 - the Friday before the last Saturday in April, this reach of stream shall be managed under gear restricted regulations as follows:

- Fishing season: October 1 - the Friday before the last Saturday in April.
- Possession season: closed; except that for children under the age of 12-years old the possession season is open.
- Tackle: artificial flies only; use or possession of scented material prohibited in the water or on shore.
- Daily possession limit: zero (0) trout; except that for children under the age of 12-years old the daily possession limit shall be one (1) trout.
- Size limits: not applicable; except that for children under the age of 12-years old the minimum size limit shall be 8 inches and the maximum size limit shall be 12 inches for all species of trout. Trout less than 8 inches or greater than 12 inches must be released.
- Mileage: 7.6 miles.

Huron River (Oakland County) from the Sign below Moss Lake Outlet to the Signs 100 Yards below Wixom Road (T2N, R7E, S13)

From the last Saturday in April - September 30, this reach of stream shall be managed under Type 1 regulations.

From April 1 - the Friday before the last Saturday in April, this reach of stream shall be managed under gear restricted regulations as follows:

- Fishing season: April 1 - the Friday before the last Saturday in April.
- Possession season: closed; except that for children under the age of 12-years old the possession season is open.
- Tackle: artificial flies only; use or possession of scented material prohibited in the water or on shore.
- Daily possession limit: zero (0) trout; except that for children under the age of 12-years old the daily possession limit shall be one (1) trout.
- Size limits: not applicable; except that for children under the age of 12-years old the minimum size limit shall be 8 inches and the maximum size limit shall be 12 inches for all species of trout. Trout less than 8 inches or greater than 12 inches must be released.
- Mileage: 2.0 miles.

Little Manistee River (Lake County) from North Peacock Trail (Spencer's Bridge T19N, R13W, S5) to Johnson Rd. (Johnson's Bridge T20N, R14W, S24)

- Fishing season: open April 1 - December 31.
- Possession season: last Saturday in April - September 30 for Brook Trout and Brown Trout; open April 1 - December 31 for all other species of trout and salmon.
- Tackle: artificial flies only; use or possession of scented material prohibited in the water or on shore.-
Daily possession limit: two (2) fish, any combination of trout and salmon.
- Size limits: minimum size limit: Brook Trout – 10 inches; Brown Trout – 15 inches; all other species of trout and salmon – 10 inches.
- Mileage: 7.5 miles.

Manistee River (Crawford County) from CO. Rd. 612 to M-72

- Fishing season: open for the entire year.
- Possession season: last Saturday in April - September 30 for Brook Trout and Brown Trout; open for the entire year for Rainbow Trout.
- Tackle: artificial lures only.
- Daily possession limit: two (2) trout; except that the daily possession limit shall not include more than one (1) trout 18 inches or greater.
- Size limits: minimum size limit: Brook Trout – 10 inches; Brown Trout – 18 inches; Rainbow Trout – 10 inches.
- Mileage: 9.2 miles.

Manistee River (Crawford and Kalkaska counties) from M-72 to Sunset Trail Rd. (CCC Bridge T26N, R6W, S26)

- Fishing season: open for the entire year.
- Possession season: last Saturday in April - September 30 for Brook Trout and Brown Trout; open for the entire year for Rainbow Trout.
- Tackle: artificial flies only; use or possession of scented material prohibited in the water or on shore.
- Daily possession limit: two (2) trout; except that the daily possession limit shall not include more than one (1) trout 18 inches or greater.
- Size limits: minimum size limit: Brook Trout – 10 inches; Brown Trout – 18 inches; Rainbow Trout – 10 inches.
- Mileage: 16.7 miles.

Paint Creek (Oakland County) from Gunn Rd. to Tienken Rd.

- Fishing season: last Saturday in April - September 30 for all species of trout.
- Possession season: last Saturday in April - September 30 for all species of trout.
- Tackle: artificial lures only.
- Daily possession limit: two (2) trout.
- Size limits: minimum size limit: all species of trout – 14 inches.
- Mileage: 5.0 miles.

Paint River, South Branch (Iron County) from the Mouth of Cooks Run (T44N, R36W, S28) to the Mouth of the North Branch of the Paint River (T44N, R35W, S8)

From the last Saturday in April - September 30, this reach of stream shall be managed under Type 2 regulations, except the minimum size limit for Brook Trout shall be 7 inches.

From October 1 - the Friday before the last Saturday in April, this reach of stream shall be managed under gear restricted regulations as follows:

- Fishing season: October 1 - the Friday before the last Saturday in April.
- Possession season: closed; except that for children under the age of 12-years old the possession season is open.
- Tackle: artificial flies only; use or possession of scented material prohibited in the water or on shore.
Daily possession limit: zero (0) trout; except that for children under the age of 12-years old the daily possession limit shall be one (1) trout.
- Size limits: not applicable; except that for children under the age of 12-years old the minimum size limit shall be 8 inches and the maximum size limit shall be 12 inches for all species of trout. Trout less than 8 inches or greater than 12 inches must be released.
- Mileage: 10.0 miles.

Pere Marquette River (Lake County) from M-37 to the Downstream Edge of the Boat Ramp/Slide at Gleason's Landing (T17N, R14W, S13)

- Fishing season: open for the entire year.
- Possession season: closed for the entire year; except that for children under the age of 12-years old the possession season is open for the entire year.
- Tackle: artificial flies only; use or possession of scented material prohibited in the water or on shore.
- Daily possession limit: zero (0) trout and salmon; except that for children under the age of 12-years old the daily possession limit shall be one (1) trout or salmon.

- Size limits: not applicable; except that for children under the age of 12-years old the minimum size limit shall be 8 inches and the maximum size limit shall be 12 inches for all species of trout and salmon. Trout and salmon less than 8 inches or greater than 12 inches must be released.
- Mileage: 8.5 miles.

Pere Marquette River (Lake County) from the Downstream Edge of the Boat Ramp/Slide at Gleason's Landing (T17N, R14W, S13) to the Upstream Edge of the Boat Ramp at Rainbow Rapids

From September 1 - the Friday before the last Saturday in April, this reach of stream shall be managed under Type 4 regulations, with the following exceptions:

- Fishing season: September 1 - the Friday before the last Saturday in April.
- Possession season: September 1 - the Friday before the last Saturday in April.
- Daily Possession Limit: zero (0) Brook Trout; zero (0) Brown Trout; one (1) Rainbow Trout.
- Size limits: not applicable for Brook Trout and Brown Trout.

From the last Saturday in April - August 31, this reach of stream shall be managed under gear restricted regulations as follows:

- Fishing season: last Saturday in April - August 31.
- Possession season: last Saturday in April - August 31.
- Tackle: artificial lures only.
- Daily possession limit: two (2) trout or salmon; except that the daily possession limit shall not include more than one (1) Brown Trout 18 inches or greater, and except that the daily possession limit shall not include more than one (1) Rainbow Trout.
- Size limits: minimum size limit: all species of salmon – 10 inches; Brook Trout – 8 inches; Brown Trout – 8 inches; Rainbow Trout – 8 inches; except that the harvest of fish greater than 14 inches and less than 18 inches shall be prohibited for Brook Trout, Brown Trout, and Rainbow Trout.
- Mileage: 10.5 miles.

Pigeon River (Cheboygan and Otsego counties) from Elk Hill Campground Horse Trail to Pine Grove Campground Stairs

- Fishing season: open for the entire year.
- Possession season: last Saturday in April - September 30 for Brook Trout and Brown Trout; open for the entire year for Rainbow Trout.
- Tackle: artificial lures only.
- Daily possession limit: two (2) trout; except that the daily possession limit shall not include more than one (1) Brown Trout.
- Size limits: minimum size limit: Brook Trout – 10 inches; Brown Trout – 12 inches; Rainbow Trout – 10 inches.
- Mileage: 5.3 miles.

Adfluvial Brook Trout Restoration Areas

The following locations have more restrictive Brook Trout regulations. Fishing regulations on these waters shall supersede those in other sections which in any way conflict with the following: the possession season for Brook Trout is from the last Saturday in April – September 30, the minimum size limit on Brook Trout, Lake Trout, and Splake shall be 20 inches with a daily possession limit of one (1) Brook Trout, Lake Trout or Splake total combined.

- 1) Big Garlic River and tributaries (Marquette County), from County Road 550 (T50N, R26W, S33) downstream to Lake Superior (T50N, R26W, S21).

44

- 2) Big Huron River (Baraga and Marquette Counties), from Big Eric's Bridge (T52N, R30W, S35) downstream to Lake Superior (T52N, R29W, S18).
- 3) Iron River (Marquette County), from Lake Independence Dam (T51N, R27W, S13) downstream to Lake Superior (T51N, R26W, S18).
- 4) Little Huron River (Marquette County), from unnamed bridge crossing located at the southern border of section 20 (T52N, R29W, S20) downstream to Lake Superior (T52N, R29W, S17).
- 5) Pilgrim River (Houghton County), from Paradise Road (T54N, R33W, S5) downstream to mouth at Portage Lake (T54N, R33W, S7).
- 6) Portage/Torch Lake system (including the Portage River, Portage Canal, North Entry and South Entry, Houghton County).
- 7) Ravine River (Baraga County), from Sicotte Road (T51N, R31W, S2) downstream to Huron Bay (T51N, R31W, S4).
- 8) Silver River (Baraga County), from Silver River Falls (T51N, R32W, S26) downstream to Huron Bay (T51N, R31W, S18).
- 9) Slate River (Baraga County), from Slate River Falls (1/2 mile upstream from Skanee Road T51N, R31W, S9) downstream to Huron Bay (T51N, R31W, S8).

Research Areas

The following streams have ongoing research projects associated with them. Fishing regulations on these streams shall be as follows:

- 1) Salmon-Trout River (Marquette County) from Lower Falls (T51N, R28W, S13) down to Lake Superior: Fishing season: last Saturday in April - August 14; Possession season: last Saturday in April - August 14; Tackle: artificial lures and all types of natural bait may be used; Daily possession limit: five (5) trout and salmon in any combination, except that the daily possession limit shall not include more than three (3) trout 15 inches or greater and no more than one (1) Brook Trout; Size limits: minimum size limit: Brook Trout – 18 inches; Brown Trout – 8 inches; all other species of trout or salmon – 10 inches.

Refuges

The following areas are established as refuge areas for Lake Trout rehabilitation and shall be closed to the taking, keeping, and sport fishing for Lake Trout.

1) Lake Michigan (North part)

All waters enclosed within an area bounded by a line commencing at a point (45°30' north latitude, 85°15' west longitude) 7¼ miles due west of the northwest corner of Section 30, T36N, R6W, (Emmet County, Michigan) on the Lake Michigan shoreline; then proceeding due west for 12 miles (to 45°30' north latitude, 85°30' west longitude); then proceeding due north for 6 miles (to 45°35' north latitude, 85°30' west longitude); then proceeding due west for 8 miles (to 45°35' north latitude, 85°40' west longitude); then proceeding due north for 11¼ miles (to 45°45' north latitude, 85°40' west longitude); then proceeding due west 16 miles (to 45°45' north latitude, 86°00' west longitude); then proceeding due south for 40 miles (to 45°10' north latitude, 86°00' west longitude); then proceeding due east for 8½ miles to (45°10' north latitude, 85°50' west longitude); then proceeding due north for 6 miles (to 45°15' north latitude, 85°50' west longitude); then proceeding due east for 7½ miles (to 45°15' north latitude, 85°40' west longitude); then proceeding due north for 6 miles (to 45°20' north latitude, 85°40' west longitude); then proceeding due east 16½ miles (to 45°20' north latitude, 85°20' west longitude) then proceeding due north 6 miles (to 45°25' north latitude, 85°20' west longitude); then, proceeding due east 4 miles (to 45°25' north latitude, 85°15' west longitude); then proceeding northerly to the point of beginning (45°30' north latitude, 85°15' west longitude).

2) Lake Michigan (Mid Lake)

All waters enclosed within an area bounded by a line commencing at a point 15 miles (43°40' north latitude, 86°50' west longitude) due west of the half (1/2) section line of Section 25, T15N, R19W, on the Lake Michigan shoreline (Oceana County); then proceeding 14.5 miles due west to the Michigan/Wisconsin boundary; then proceeding southerly along the boundary line to a point (43°03.5' north latitude, 87°05' west longitude) due west of the mouth of the Grand River (T8N, R16W, S30, Ottawa County) on the Lake Michigan shore; then proceeding due east 14 miles (to 43°03.5' north latitude, 86°50' west longitude); and then northerly to the point of beginning (43°40' north latitude, 86°50' west longitude).

3) Lake Huron (North end)

All waters enclosed within an area bounded by a line commencing at the southwest corner of Section 17, T41N, R5E (Chippewa County) on the Lake Huron shoreline for the point of beginning and proceeding due south 15 miles (to 45°45' North latitude, 83°50' west longitude), then proceeding due east 8 miles (to 45°45' North latitude, 83°40' west longitude); then proceeding 6 miles due south (to 45°40' North latitude, 83°40' west longitude); then proceeding due east to the Michigan-Ontario border; then proceeding northwesterly and then northeasterly along said border to a point due south of the southeast corner of Section 1, T41N, R7E (Chippewa County), on the said shoreline, and westerly along said shoreline to the point of beginning.

4) Lake Huron (6 Fathom Bank)

All waters enclosed within an area bounded by a line commencing at a point in Lake Huron at 45°00' north latitude, 82°45' E west longitude; then proceeding due east to the international boundary line between the U.S. and Canada; thence in a southeasterly direction to 44°40' north latitude; thence due west to 44°40' north latitude, 82°45' E west longitude; then proceeding due north to the point of beginning.

This Order shall be assigned number FO-200.19, and is entitled "Statewide Trout, Salmon, Whitefish, Lake Herring, and Smelt Regulations."

This Order supersedes the Order entitled "Statewide Trout, Salmon, Whitefish and Lake Herring Regulations," which became effective April 1, 2018, and was assigned number FO-200.18.

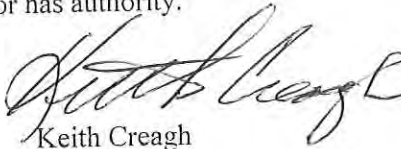
This Order shall take effect on April 1, 2019 and shall remain in effect until amended/rescinded.

Issued on this 13th day of December 2018.

Approved as to matters over which the Natural Resources Commission has authority.


Vicki J. Pontz, Chair
Natural Resources Commission

Approved as to matters over which the Director has authority.


Keith Creagh
Director



RICK SNYDER
GOVERNOR

STATE OF MICHIGAN
DEPARTMENT OF NATURAL RESOURCES
LANSING



KEITH CREAGH
DIRECTOR

SUBMITTED: September 17, 2018
RESUBMITTED: October 15, 2018
RESUBMITTED: November 13, 2018

MEMORANDUM TO THE DIRECTOR

Information: Natural Resources Commission

Subject: Public Act 288 of 2016; Forest Road Inventory in the Upper Peninsula and the Southern Lower Peninsula
Land Use Orders of the Director Amendment No. 7 of 2018

Authority:

The Natural Resources and Environmental Protection Act, 1994 PA 451, authorizes the Director to issue orders to implement land use rules.

Discussion and Background:

Currently, state-managed forest roads in the Upper Peninsula are open to off-road vehicle (ORV) use unless closed by the Department; and state-managed forest roads in the Southern Lower Peninsula are closed to ORV use unless posted open by the Department.

A forest road is defined in MCL 324.81101 as "a hard surfaced road, gravel or dirt road, or other route capable of travel by a 2-wheeled drive, 4-wheel conventional vehicle designed for road use. Forest road does not include a Street, County Road, or Highway."

Public Act 288 of 2016 amended Part 721, Michigan Trailways, of the Natural Resources and Environmental Protection Act as follows:

- The Department is required to complete a comprehensive inventory of state-managed forest roads by dividing the state into five regions, the Upper Peninsula being one region. The two most northerly regions in the Lower Peninsula shall be completed by December 31, 2017 and the remaining regions by December 31, 2018. The inventory shall identify locations, condition, development level, and types and times of restrictions existing on motorized and non-motorized use.
- After completion of a road inventory, the Department is required to:
 1. Open forest roads to motorized use by the public unless designated otherwise by the Department pursuant to the procedure for a Land Use Order of the Director; and
 2. Annually post to its website the total miles of forest roads open to motorized use and a map or maps of those forest roads.

47

- Before the Department newly restricts a road from being used to access public land, the local unit of government shall be provided a written notice that includes the reason for the restriction.

On December 14, 2017, the Director approved Land Use Orders of the Director Amendment No. 5 of 2017, Public Act 288 of 2016; Forest Road Inventory in the Northern Lower Peninsula that opened 6,308.6 (83.84%) miles of state forest roads to ORV use in the two most northernly regions in the Lower Peninsula and closed 1,213.6 (16.13%) miles to ORV use in the two most northernly regions in the Lower Peninsula. The map with the approved state-managed forest roads open and closed to ORV use in the Northern Lower Peninsula was published online in late December 2017.

In July 2018, the Department completed a road inventory of state-managed forest roads in the Upper Peninsula and the Southern Lower Peninsula and identified the following:

- Location- Roads identified on maps
- Condition- Present condition of roads
- Development Level- Surface type
- Types of Restrictions (motorized and non-motorized) by segment and season of restriction
- Criteria for restrictions on roads
- Other road attributes including surface type, width, current condition, and whether the road is open or closed to multiple uses

The Department mapped out and reviewed all state-managed forest roads on state-owned land managed by the Forest Resources, Parks and Recreation, and Wildlife Divisions in the Upper Peninsula and the Southern Lower Peninsula. For the Upper Peninsula, the Department initially proposed to have 98.40% of the road mileage open to ORV use, 0.09% closed to ORV use year-round, and 0.07% closed seasonally to ORV use. This initial proposal was made available for public review for the Upper Peninsula from May 1, 2018 to June 15, 2018. For the Southern Lower Peninsula, the Department initially proposed to have 1% of the road mileage open to ORV use, 79% closed to ORV use year-round, and 20% closed seasonally to ORV use. The initial proposal was made available for public review from June 1, 2018 to July 15, 2018. The Department offered a variety of methods for the public to provide input including stakeholder meetings, public meetings, email, letters, and an online web map designed to accept comments on specific roads or road segments. Upon completion of the public review period, the Department staff representing the Resource Divisions met to review and consider the public input received and developed a final proposal for state-managed forest roads that will be open and closed to ORV use.

In the Upper Peninsula, the Department proposes the following:

- 5,582.06 (99.10%) miles to be open year-round to ORV use;
- 50.28 (0.89%) miles to be closed year-round to ORV use; and
- 0.48 (0.01%) miles be closed seasonally to ORV use.

In the Southern Lower Peninsula, the Department proposes the following:

- 8.95 (2.43%) miles to be open year-round to ORV use;
- 285.92 (77.67%) miles to be closed year-round to ORV use; and
- 73.25 (19.90%) miles be closed seasonally to ORV use.

The Department considered the following reasons for proposing closing roads:

- Environmental and resource protection
- Dedicated or nominated natural area
- Conflicts with adjacent property ownership
- Litter and dumping
- User safety
- Lack of legal access (easement needed)
- Road density
- Reduce user conflict
- Poor road conditions
- Administrative Rule
- Land Use Order
- Deed restriction
- Management plans
- Temporary management access
- Military land restrictions
- Grouse Enhanced Management Systems
- Turkey Tracts

The map with the approved state-managed forest roads open and closed to ORV use in the Upper Peninsula and Southern Lower Peninsula will be published online by December 31, 2018. Signs will be posted on the state-managed forest roads closed to ORV use.

The final comprehensive inventory of the state-managed forest roads that includes the Upper Peninsula, Northern Lower Peninsula, and the Southern Lower Peninsula will be available online in January 2019. Once the final comprehensive inventory map is posted online, the Department will continue to review road use and other issues, and the map will be updated annually to reflect modifications to which forest roads are open, depending on changing circumstances, land use patterns, resource protection, and other factors.

If resource damage as a result of ORVs does occur, the Department plans to address these issues and may recommend additional restrictions, including possible closures to ORV use. Use of forest roads for recreation and access must be balanced against the need for resource protection, wildlife concerns, multiple recreational uses, and public safety.

Issues Pros and Cons

Michigan offers countless opportunities for outdoor recreation and adventures through the availability and diversity of its public lands. There is a recreational demand for expansion of ORV use on state-managed forest roads in the Lower Peninsula, and there is confusion regarding

locations of roads open to ORV use and closed to ORV use. There is a need for an accurate inventory and mapping of the state forest road system and the identification of current restrictions on use. In addition, opening more forest roads to ORV use allows the public to take full advantage of this recreational activity.

In addition to the state-managed forest roads classified as open to ORV use through this inventory process, some county roads have been designated by a county government as open to ORV use under local regulations. Opening more state-managed forest roads to ORVs and maintaining a map of forest roads open to use will expand the ORV network, increase opportunity and connectivity for ORV riders, and reduce confusion regarding where ORV use is allowed.

On the other hand, opening state-managed forest roads previously closed to ORV use will potentially degrade road conditions, possibly to the point of making them unusable or unsafe for users. Road and trail erosion and compaction caused by ORVs may reduce the quality of recreational roads and require increased management action to develop and maintain the roads, and increased costs associated with the necessary maintenance. In addition, opening roads previously closed to ORV use may result in expansion of illegal use and create new user conflicts. If the opening of these roads causes the density and frequency of motorized use to increase significantly, there may also be negative impacts to wildlife species and habitats.

Biological

Unintended negative consequences to wildlife due to increased human activity and noise may result, and could impact breeding, nesting, denning, and the rearing of young. The use of ORVs may widen and rut the forest roads and may increase the sediment load to streams, which may threaten fisheries. In addition, opening roads that were previously closed to ORV use may increase the spread of non-native plant species.

Social

During the public review process, the Department posted an online interactive map for the Upper Peninsula from May 1, 2018 to June 15, 2018 that provided the public an opportunity to comment on specific forest roads proposed to be open and closed to ORV use. The Department also invited over 60 groups and organizations to a stakeholder meeting in the Upper Peninsula and six stakeholder representatives attended. In addition, the Department held four public meetings from May 14, 2018 through May 17, 2018 in Marquette, Houghton, Iron Mountain, and Newberry. The Department provided the Tribes an opportunity to review the proposal directly with the Department in the Upper Peninsula.

In addition, the Department posted an online interactive map for the Southern Lower Peninsula from June 1, 2018 to July 15, 2018 that provided the public an opportunity to comment on specific forest roads proposed to be open and closed to ORV use. The Department also invited over 100 groups and organizations to stakeholder meetings in the Southern Lower Peninsula and five stakeholder representatives attended. In addition, the Department held five public meetings from June 4, 2018 through June 8, 2018 in Mears, Allegan, Dewitt, Novi, and Bay City. All Tribal governments with interests in the Southern Lower Peninsula forest road access that could

be affected by implementation of Public Act 288 were invited to the public meetings and were also given the opportunity to meet directly with Department staff if they desired.

For both the Upper Peninsula and Southern Lower Peninsula, public meetings and stakeholder meetings were sparsely attended. The Department received only 84 comments for the Upper Peninsula and 77 comments for the Southern Lower Peninsula during the public review process, ranging from general comments about the process and Public Act 288 to comments on special management areas and individual road segments. However, opening roads previously closed to ORV use in the Southern Lower Peninsula would be a significant change in land use and resulted in interest and concern from the public, user groups, and stakeholders who expressed a preference that most roads remain closed to ORV use.

The potential exists for increased levels of user conflict with other recreation groups (such as hikers, mountain bikers, and horseback riders) if all roads are opened to ORVs in the Southern Lower Peninsula. Sections of non-motorized trail systems are currently located on forest roads and intersect many forest roads. The Department's recommendation will maintain most road closures in the Southern Lower Peninsula, and Department staff will monitor these factors as a regular course of business and continue to accept and review public comments and stakeholder input regarding desired changes to forest roads that are open or closed to ORV use. Any user conflicts that arise may be addressed by increasing outreach to ORV users on forest roads, employing methods to reduce natural resource damage and user conflicts, and continued user group engagement.

Economic

Depending on location, opening forest roads to ORVs could allow for additional recreational opportunity and may increase tourism in Michigan. Communities near newly opened forest roads may experience increased tourism and spending related to ORV use.

As the House Fiscal Agency Bill Analysis for Public Act 288 recognized, the Act "create[s] additional mandates on departmental staff and time which do not currently exist." To date, the road inventory, review, and the mapping effort has been a significant cost to the Department. In addition, there will be increased cost to maintain roads, signage, install new signage, and to address environmental and safety issues. Initially, purchase and installation of new signage made necessary by Public Act 288 will likely be the most significant expense. New signs must be purchased at approximately \$17 per sign, and Department staff time must be expended to install the new signage. Currently, the Department has no dedicated funds for these new expenses necessitated by Public Act 288.

Recommended Changes to the Land Use Order of the Director (LUOD)

Regulations applicable to motorized vehicle use on Department-managed lands are located in Chapter 9 of the LUOD entitled "Department Managed Lands Open to Motorized Vehicles;" however, due to the phased approach to implementing PA 288, Chapter 9 currently only reflects motorized vehicle use on Department-managed land in the Northern Lower Peninsula. The regulations applicable to motorized vehicle use on Department-managed land in the Upper

Peninsula and Southern Lower Peninsula are in Chapters 2, 3, 4, 5, and 7 of the LUOD, depending on the location and managing division of the land at issue. In order to fully integrate the interactive and user-friendly map created through the inventory process with the Department's regulatory structure applicable to motorized-vehicle use on Department-managed lands, the relevant divisions recommend amending the current regulations in the LUOD to utilize the map to describe where motorized vehicles other than snowmobiles may be used statewide.

Specifically, for those counties that make up the Upper Peninsula and the Southern Lower Peninsula where the inventory is now complete, the divisions recommend removing the motor vehicle regulations from the existing chapters and incorporating them into Chapter 9 in the LUOD. Chapter 9 will now incorporate all motorized vehicle regulations and will be clearer and easier to understand for the public.

The Department also recommends removing the list of individual counties in Chapter 9 of the LUOD where an individual cannot operate a motorized vehicle, other than a snowmobile, unless it is illustrated as open on the interactive access map. This list was necessary after completion of the Northern Lower Peninsula inventory because PA 288 required an incremental implementation over two years. Now that the statewide inventory is complete, all motorized vehicle regulations will be incorporated into Chapter 9 and shown on the interactive access map. In addition, the date of the access map is recommended to be December 14, 2018, however, those regulations regarding motorized vehicle use in the Northern Lower Peninsula have not changed.

Administrative Changes:

The divisions also recommend administrative changes throughout the order that provide consistency and clarification.

Relevant Divisions have contributed to the preparation of this order. This order is being submitted for action. This item appeared on the Department's September, October and November calendars and may be eligible for approval on December 13, 2018.



FOR

Debbie A. Begalle, Chief
Forest Resources Division



Russ Mason, Ph.D., Chief
Wildlife Division



James Dexter, Chief
Fisheries Division



Gary Hagler, Chief
Law Enforcement Division



Ronald A. Olson, Chief
Parks and Recreation Division



William O'Neill
Natural Resources Deputy

LAND USE ORDERS OF THE DIRECTOR

Amendment No. 7 of 2018

By authority conferred on the Director of the Department of Natural Resources by Section 504 of the Natural Resources Environmental Protection Act, 1994 PA 451, as amended, MCL 324.504, and in accordance with R 299.921 to R 299.933, the Director of the Department of the Natural Resources orders the following:

3.1 Managed state game areas and wildlife areas, prohibited conduct.

Order 3.1. A person shall not do any of the following on the managed state game areas (SGA) and wildlife areas (WA) designated in section 13.1 of the wildlife conservation order except as provided in this order:

(1) Construct a shooting pit or permanent blind.

(2) Possess or carry into the area posted "state game area-hunting by permit only," any metal or glass beverage container commonly used to contain juices, soft drinks, or an alcoholic beverage, but excluding "thermos type bottles" during the period September 1 through January 1.

(3) Camp or attempt to camp on designated parking areas or on any lands posted "state game area - hunting by permit only" during the period October 1 to the end of the migratory bird season, excluding Fish point WA, Tuscola county, unless authorized by the director.

(4) Fish in any area posted against such use.

(5) Operate a motorboat at other than a safe, no-wake speed, or in any area posted against such use, in those managed hunting areas listed below and posted "state game area - hunting by permit only"

(a) Fish point WA.

(b) Nayanquing point WA.

(c) Pointe Mouillee SGA.

(d) Shiawassee river SGA.

(e) The Harsens island unit of the St. Clair flats WA.

3.38 Beaver island state wildlife research area, Charlevoix county, camping, snowmobiles, prohibited conduct.

Order 3.38 (1) A person shall not do any of the following on the Beaver island state wildlife research area, Charlevoix county:

(a) Camp in other than a designated campsite, as posted.

(b) Build or maintain an open fire, except in a self-contained cooking unit, a fire ring, or a grill in a designated campsite.

(c) Enter, use, or occupy any designated campsite with a snowmobile.

4.6 Certain state-owned lands, Alger county, prohibited conduct, exceptions.

Order 4.6. (1) A person shall not operate a snowmobile, except under a written permit issued by the department's authorized representative on state-owned lands within the SE1/4 of the SE1/4 of section 10, T45N R21W, and the NE1/4 of the NW1/4 and the NW1/4 of the NE1/4 of section 35, T45N R21W, the SE1/4 of the SW1/4 of section 18, T47N R17W, and section 36, T47N R17W, Alger county.

(2) A person shall not operate a snowmobile within the area commonly known as the Melstrand grouse enhanced management system, where gated, posted, or otherwise blocked within sections 21, 22, 27, 28, and 33, T47N, R17W, Alger county, without written permission issued by the department, exception:

(a) This section shall not apply to department employees and their designees using a snowmobile or a motorized vessel to perform official duties, or to fire, emergency or law enforcement personnel to perform official duties.

4.9b Repealed; Am. 7, 2018, Eff. December 13, 2018.

Publisher's note: The repealed section pertained to "Certain state-owned lands, Baraga county, motorized vehicles, prohibited conduct."

4.14 Certain state-owned lands, Chippewa county, entry, camping, snowmobile use, prohibited conduct.

Order 4.14 A person shall not do any of the following upon the described state-owned lands, Chippewa county:

(1) A person shall not enter upon the state-owned lands of lot 5 within the SW¼ of section 32, T51N R5W, Chippewa county, between April 1 and June 15.

(2) A person shall not operate a snowmobile upon the state-owned lands south of Farm truck road within sections 4, 5, 6, 7, 8, 9, 14, and 15, T49N R7W, west of Farm truck road within section 13, T49N R7W, west of highway M-123 within sections 16, 17, 18, 19, 20, 21, 22, and 23, T49N R7W, north of highway M-123 and west of Farm truck road within section 24, T49N R7W, within the NW¼ of section 29, and within the N½ of section 30, T49N R7W.

(3) A person shall not operate a snowmobile on the existing trail, located on state-owned land, along the section line between sections 8 and 17 and sections 16 and 9, then northward through sections 9 and 8 and westward through sections 5 and 6, T44N R1E, except for department management purposes.

(4) A person shall not camp, build fires or leave unattended motorized vehicles or moored boats on state-owned property known as Raber dock within section 28, T43N, R3E, Chippewa county.

4.16a Repealed; Am. 7, 2018, Eff. December 13, 2018.

Publisher's note: The repealed section pertained to "Certain state-owned lands, Delta county, wheeled motorized vehicles, prohibited conduct."

4.16b Certain state-owned lands, Delta and Schoolcraft counties, snowmobiles, prohibited conduct, exceptions.

Order 4.16b A person shall not operate a snowmobile within the area commonly known as the Garden grade grouse enhanced management system, where gated, posted, or otherwise blocked within sections 31 and 32, T41N, R17W, Schoolcraft county and sections 1, 2, 3, 10, 11, 12, 13, 14, 15, 22, 23, and 24, T40N, R18W, Delta county, without written permission issued by the department, exception:

(a) This section shall not apply to department employees and their designees using a motorized vehicle or a motorized vessel to perform official duties, or to fire, emergency or law enforcement personnel to perform official duties.

4.16c Certain state-owned lands, Delta and Menominee counties, firearms, prohibited conduct, exceptions.

Order 4.16c (1) The Escanaba-Hermansville restricted ORV route means the former Wisconsin central ltd. railroad right-of-way that is signed and maintained a restricted ORV route. Beginning in the city of Escanaba at the NW and NE1/4 line of the NE1/4 of section 21, T39N R23W, Delta county and ending in Hermansville at the NW1/4 of the NE1/4 of section 11, T38N R27W, Menominee county. (1) A person shall not do any of the following upon the Escanaba-Hermansville restricted ORV route:

(a) Discharge or hunt with a firearm.

4.17 Certain state-owned lands, Dickinson county, snowmobiles, firearms, prohibited conduct.

Order 4.17 (1) A person shall not operate a snowmobile, from April 1 through November 30, without a written permit issued by the department on the following described state-owned lands, Dickinson county:

- (a) Trail numbers 1 through 4 located in sections 6 and 7, T44N R27W, and in sections 1, 2, and 12, T44N R28W.
- (b) Trail numbers 5 and 6 located in sections 30 and 31, T41N R29W, and section 36, T41N R30W.
- (c) Trail numbers 11 through 13 located in sections 23, 24, and 26, T40N R29W, and section 20, T41N R28W.
- (d) Trail numbers 16 and 17 located in section 19, T44N R29W, and section 24, T44N R30W.
- (e) Trail number 18 located in section 21, T42N R27W.

(f) Lake Antoine, grade, snowmobile trail, that part lying and extending north of the sturgeon river in section 13, T39N R29W, and that part lying in sections 2, 3, 11, and 12, T39N R29W, and lying east of the north-south county road in the center of section 4, T39N R29W.

(2) A person shall not use or possess firearms within the NW1/4 of the NW1/4 of section 7, T39N R28W.

(3) A person shall not operate a snowmobile within the area commonly known as the Ralph grouse enhanced management system, where gated, posted, or otherwise blocked within sections 1, 2, 7, 8, 9, 10, 11, 12, 15, 16, 17, 18, 20, and 21, T43N, R28W, Dickinson county without written permission issued by the department, exception:

(a) This section shall not apply to department employees and their designees using a snowmobile or a motorized vessel to perform official duties, or to fire, emergency or law enforcement personnel to perform official duties.

4.18 Repealed; Am. 7, 2018, Eff. December 13, 2018.

Publisher's note: The repealed section pertained to "Felch grade snowmobile trail, Dickinson, Menominee and Delta counties, prohibited conduct, exceptions."

4.21a Certain state-owned lands, Houghton county, prohibited conduct.

Order 4.21a (1) A person shall not enter, use or occupy the following lands unless authorized by the Baraga management unit manager:

(a) State-owned lands in the vicinity of Eleven-mile lake, consisting of the SE1/4 of the NW1/4 of the SE1/4 and the NE1/4 of the SW1/4 of the SE1/4 of section 2, T53N R35W, from April 15 through September 9, Houghton county.

(b) State-owned lands within the 760-foot fenced and gated portions of the former copper range railroad grade and the former Hancock and Calumet railroad grade, located within government lots 1 and 2, section 36, T55N R34W, Houghton county.

(2) A person shall not enter the state designated trails until declared safe for public access.

(a) Lake Linden trail (snowmobile number 3) between first street in Dollar bay and Normand road.

(b) Freda trail (snowmobile number 120).

4.23 Certain state-owned lands, Iron county, snowmobiles, prohibited conduct.

Order 4.23 (1) A person shall not operate a snowmobile upon trail number 7 in section 36, T42N R32W, from April 1 through November 30, without a written permit issued by the department.

(2) A person shall not operate a snowmobile from April 1 through November 30 upon trail numbers 19 through 23 located in sections 14 and 19, T43N R31W; section 24, T42N R31W; section 31, T45N R32W; and section 35, T44N R31W, without a written permit issued by the department.

(3) A person shall not enter, use or occupy, on what is commonly referred to as the camp one road within the S1/2 of the NE1/4, Section 9, T45N R31W, without a written permit issued by the department.

4.27 Certain state-owned lands, Luce county, camping, snowmobiles, prohibited activities.

Order 4.27 (1) A person shall not camp in the parking lot near the mouth of the blind sucker river located in the NW¼ of the NW ¼ of section 4, T49N R11W, Luce county.

(2) A person shall not camp at Manistique lake in section 29, T45N R12W, Luce county.

(3) A person shall not camp within 400 feet of the two hearted river and its tributaries within the following described locations except at designated state forest campgrounds:

(a) The north branch of the Two hearted river from the southwest corner of section 34, T49N R12W, then southeasterly through T48N R12W and T48N R11W to the mainstream of the two hearted river.

(b) The west branch of the Two hearted river from the west side of section 11, T48N R12W, easterly through T48N R12W to the confluence of the south branch of the Two hearted river in section 9, T48N R11W.

(c) The south branch of the Two hearted river from the southeast portion of section 33, T48N R11W, northerly to the west branch of the Two hearted river.

(d) The east branch of the Two hearted river from the south side of section 32, T49N R9W, northerly to the mainstream of the Two hearted river.

(e) Dawson creek from section 24, T48N R11W, easterly through the northeast portion of section 20, T48N R10W, northerly through T48N R10W to its confluence with the mainstream of the Two hearted river in section 29, T49N R10W.

(f) The mainstream of the Two hearted river from confluence of the south branch of the Two hearted river and the west branch of the Two hearted river in section 9, T48N R11W, through the southeast portion of T49N R11W, northeasterly through T49N R10W, through the northwest portion of T49N R9W, and through T50N R9W to Lake superior.

(4) A person shall not operate a snowmobile on the forest road in section 3, T49N R11W, from Deer park road to the mouth of the Blind sucker river.

(5) A person shall not operate a snowmobile on the forest road located in the E½ of section 33 and section 34, T49N R11W, as posted.

(6) A person shall not operate a snowmobile upon state-owned lands in sections 9, 10, 11, 12, 13, 14, 15, 16, 21, 22, 23, 24, 25 (except the SE¼ of section 25), 26, 27, 28, 33, 34, and 35 (except the SE¼ of section 35), T49N R8W.

(7) A person shall not camp upon state-owned lands in section 16, and the north ½ of section 21, T46N, R9W, Luce county.

(8) A person shall not enter, use or occupy on the closed forest road located in section 13, T47N R09W SW ¼ of NE ¼, where the bridge crosses the north branch of Murphy creek.

4.28 Repealed; Am. 7 of 2018; Eff. December 13, 2018.

Publisher's note: The repealed section pertained to "Certain state-owned lands, Mackinac county, wheeled motorized vehicles, prohibited conduct."

4.30 Certain state-owned lands, Marquette and Alger counties, prohibited conduct.

Order 4.30 (1) A person shall not operate a snowmobile upon state-owned lands within the following portions of Marquette county:

(a) The SE¼ of the NE¼ and the NE¼ of the SE¼ of section 33, and the N½ of the SW¼ and the E½ of the NW¼ of section 34, T45N R28W.

(b) Those lands lying south of county road 480 and east of county road 553 in section 22, the W½ of section 23, the NW¼ of section 26, and section 27, T47N, R25W and on the designated pathway known as thunder valley equestrian trail in the S½ of section 26, W½ of the SE¼ of section 25, and section 36 of T47N, R25W. In addition, no overnight camping is allowed in the thunder valley equestrian trail parking lot.

(c) On the closed road in the SW¼ of the NE¼ and the NW¼ of the SE¼ of section 3, T49N, R26W.

(2) A person shall not camp within the east Anderson lake state forest campground area, being all or portions of section 12, T44N R26W; that part of the S½ of the SE¼ of section 12, T44N R26W, lying southerly and easterly

of Anderson lake; the NE1/4 of the NE1/4 of section 13, T44N R26W; and the NW1/4 of the NW1/4 of section 18, T44N R25W, Marquette county.

(3) A person shall not do any of the following on the blueberry ridge pathway located upon state-owned lands within sections 22, 23, 26, 27, T47N, R25W, Marquette county.

(a) Possess a dog from November 15 to April 15.

(b) Possess a horse or other riding or pack animal or bike.

(4) A person shall not do any of the following on the little Presque isle property in sections 17 to 20, and 29 to 32, T49N R25W, and sections 13, 24, 25 and 36, T49N R26W, Marquette county:

(a) Launch or attempt to launch a vessel equipped with an inboard or outboard motor, except an electric motor, onto the waters of Harlow lake.

(b) Target shoot with a firearm, crossbow, or bow and arrow.

(c) Operate a snowmobile except upon a forest road.

(d) Have an open fire, except fires in a self-contained cooking unit or in a fire ring or grill in a designated campsite or day use area west of county road 550.

(e) Possess a glass container except in a designated camping area.

(f) Possess or consume an alcoholic beverage east of county road 550.

(g) Allow a pet to be unleashed within a designated quiet or designated day use area.

(h) Camp within 1 mile of a campground, rustic cabin, day use area or boat launching site, or camp east of County road 550.

(i) Use a mountain bicycle, except on an abandoned railroad right-of-way, forest road or designated trail.

(j) Use or operate a loud speaker, public address system, or other sound amplifying equipment without written permission of the unit manager. Permission shall not be granted if such system is capable of interfering with the use and enjoyment of the quiet area by other persons.

(k) Operate a motor, snowmobile, radio, television or any device in a manner that produces excessive noise.

(5) A person shall not camp upon or within 100 feet of the little garlic parking lot in the SE1/4 of the NW1/4 of section 3, T49N R26W, Marquette county.

(6) The Marquette to Munising junction trail means the former Wisconsin central limited railroad right-of-way beginning at Hampton street in the city of Marquette in the NW1/4 of the NE1/4 of section 26, T48N R25W, Marquette county and ending at Munising junction in the SW1/4 of the SE1/4 of section 17, T46N R19W, Alger county. A person shall not do any of the following upon the Marquette to Munising junction trail:

(a) Operate a snowmobile at a speed greater than 35 miles per hour as posted, commencing where the trail intersects the west line of the NW1/4 of NW1/4 of section 6, T47N, R24W, or starting from the westerly end point behind the Michigan department of transportation welcome center in Harvey to an easterly end point 0.4 miles east of Chocoley downs road.

(b) This order shall not apply to vehicles used by the state of Michigan, law enforcement agencies or utility companies when on official business, or other parties with written permission from the unit manager or for otherwise lawful operation of wheeled motorized vehicles when crossing the trail.

(7) A person shall not operate a snowmobile within the area commonly known as the Bill Rollo Memorial grouse enhanced management site, where gated, posted, or otherwise blocked within sections 14, 15, 17, 19, 20, 21, 22, 23,

24, 26, 27, 30, and 35, T44N, R26W, Marquette county without written permission issued by the department, exception:

(a) This section shall not apply to department employees and their designees using a snowmobile or a motorized vessel to perform official duties, or to fire, emergency or law enforcement personnel to perform official duties.

4.31 Certain state-owned lands, Menominee county, snowmobiles, prohibited conduct, exceptions.

Order 4.31 (1) A person shall not operate a snowmobile, without a written permit issued by the department, from April 1 through November 30 upon:

(a) Trail numbers 8 through 10 lying within sections 22, 26, and 27, T36N R28W; section 6, T35N R25W; and section 16, T36N R25W, Menominee county.

(b) Trail numbers 14 through 15 lying within section 10, T37N R28W, and section 18, T37N R27W, Menominee county.

(2) A person shall not camp within one half mile of the township campground in the NW $\frac{1}{4}$ of section 8, or the Pemene falls parking area in the SW $\frac{1}{4}$ of section 16 and the NW $\frac{1}{4}$ of section 21, T37N R28W, Menominee county.

(3) A person shall not operate a snowmobile within the area commonly known as the Cedar river grouse enhanced management system, where gated, posted, or otherwise blocked within sections 5, 6, 7, and 8, T35N, R25W, and sections 1 and 12, T35N, R26W, Menominee county, without written permission issued by the department, exception:

(a) This section shall not apply to department employees and their designees using a snowmobile or a motorized vessel to perform official duties, or to fire, emergency or law enforcement personnel to perform official duties.

4.40 Certain state-owned trails, prohibited conduct.

Order 4.40 (1) The Musketawa trail means the former railroad right-of-way in the city of Muskegon, Muskegon county, T10N R16W, beginning at Ottawa avenue in section 20 and ending at Vulcan street in section 33, and the former railroad right-of-way beginning approximately $\frac{1}{4}$ mile northwest of the intersection of the right-of-way with black creek road in section 34, T10N R16W, Muskegon county, and extending southerly and easterly to the junction with the active railroad right-of-way located in section 36, T8N R13W, Ottawa county and commonly known as "Penn Junction." A person shall not do any of the following upon the Musketawa trail:

(a) Discharge a firearm, bow and arrow, or crossbow.

(b) Operate a snowmobile without written permission from the state trails coordinator, except that a registered snowmobile may be operated between points a and b described as follows:

(i) Point a - approximately $\frac{1}{4}$ mile northwest of the intersection of the railway with black creek road in section 34, T10N R16W, Muskegon county.

(ii) Point b - the intersection of the railway with eighth avenue, section 25, T8N R13W, Ottawa county.

(c) Operate a snowmobile between the Crockery creek trestle and the easterly end of the trail in section 36, T8N R13W, Ottawa county, unless the trail manager has determined there is adequate snow cover on the trail surface and has posted the trail open to snowmobile use.

(2) The Bay View-Oden trail means the former railroad right-of-way extending between Division street in Bear creek township, section 33, T35N R5W and Blumke road in Littlefield township, section 17, T35N R4W, Emmet county. A person shall not operate a snowmobile upon the bay View-Oden trail without written permission of the forest management field coordinator, except that a snowmobile may be operated on this trail between highway M-119 in bear creek township, section 27, T35N R5W and Blumke road in Littlefield township, section 17, T35N R4W, Emmet county.

(3) The Ionia-Lyons trail means the former railroad right-of-way extending between Quarry road in section 21 and riverside drive in section 23, T7N R6W, Ionia county. A person shall not operate a snowmobile upon the Ionia-Lyons trail without written permission from the state trails coordinator.

(4) The Mackinaw-Alanson trail means the former railroad right-of-way extending between Nicolet street in the village of Mackinaw city, section 18, T39N R3W, Cheboygan county and M-68 extended, in the village of Alanson, section 10, T35N R4W, Emmet county.

(5) The Cheboygan to Alpena trail means the former railroad extending between just south of Lincoln avenue and east of western avenue section 6, T37N R1W Cheboygan county and the west right-of-way side of U.S. 23 highway in section 9, T31N R8E Alpena county. A person shall not do any of the following on the Cheboygan to Alpena trail:

(a) Use any portion of the trail or trail structure for swimming or diving.

(6) The Polly-Ann trail means the former railroad right-of-way beginning at Indianwoods road, section 4, T4N R10E, Oakland county, then northerly to a point 850 feet southeast of Lake pleasant road in section 3, T8N R11E, Lapeer county, and includes a segment which is described as a 50-foot-wide strip of land around the perimeter of a gravel pit extending from railroad station 791+89.9, section 23, to railroad station 848+69.1, section 24, T5N R10E. For the purposes of this order, the former railroad right-of-way from railroad station 791+89.9, section 23, to railroad station 848+69.1, section 24, T5N R10E is excluded from the Polly-Ann trail. A person shall not do any of the following upon the Polly-Ann trail:

(a) Discharge a firearm, bow and arrow, or crossbow.

(b) Operate a snowmobile without written permission from the state trails coordinator.

(7) The Betsie valley trail means all of the following: segment 1 which is the former railroad right-of-way from the city of Frankfort, section 27, T26N R16W, to Mollineaux road in section 20, T26N R15W including the former railroad right-of-way spur from this right-of-way into the village of Elberta, section 27, T26N R16W; segment 2 which is the 10-foot-wide trail easement along crystal lake between Mollineaux road and the village of Beulah, as located pursuant to the trail relocation agreement with the crystal lake property owners, and segment 3 which is the former railroad right-of-way from the village of Beulah, section 26, T26N R15W, to its intersection with the department-owned former CSX railroad right-of-way in the village of Thompsonville, section 36, T25N R14W, Benzie county.

(a) Enter, use, or occupy the Crystal lake boating access site 10-066 to access the Betsie valley trail (in accordance with 19th Judicial Circuit Consent Judgment, No. 04-7095-CE and Special Trail Use and Law Enforcement Plan No. 88-3199-CH), section 22, T26N R16W, Benzie county.

(b) A person shall not operate a snowmobile upon the Betsie valley trail without written permission from the forest management field coordinator, except on segment 3 as defined in subsection (7) of this order.

(c) On segment 2 as defined in subsection (7) of this order, a person shall not:

(i) Operate a snowmobile.

(ii) Discharge a firearm, bow and arrow, or crossbow.

(iii) Use the trail between 11:00 p.m. and 6:00 a.m.

(iv) Ride or lead a horse, pack animal, other riding animal, or pet on the trail, except a leader dog.

(v) Ride a bicycle:

(A) Between sunset and sunrise.

(B) In excess of 10 miles per hour.

(C) Fail to yield to other trail users or fail to yield to pedestrians crossing the trail.

(D) In an organized group of 10 or more persons without written permission from authorized trail staff.

LOD

(E) When instructed not to do so by authorized trail staff, as required to implement Bigelow et al. v. MDOT et al.

(8) A person shall not operate a snowmobile upon the Alpena-Hillman trail without written permission from the forest management field coordinator, except on that portion of the trail west of Bagley street beginning at the east line of section 29, T31N R08E. The Alpena-Hillman trail means the following two segments of inactive railroad rights-of-way:

(a) That segment beginning at the junction with the D&M railroad in the city of Alpena in section 28, T31N R8E, and ending at the west line of section 16, T31N R06E, Alpena county.

(b) That segment beginning at the east line of section 13, T31N R05E, Alpena county, and ending at the west line of the SE $\frac{1}{4}$ of the NE $\frac{1}{4}$ of section 24, T31N R04E, Montmorency county.

(9) The North central state trail means the former railroad right-of-way extending between Nicolet street in the village of Mackinaw city, section 18, T39N, R3W, Cheboygan county, and section 28, Livingston township, T31N R03W, Otsego county. A person shall not:

(a) Operate a snowmobile upon that portion of the North central state trail extending from a point beginning at the intersection of the trail corridor with M-27 in Section 24, Inverness township, T37N R2W, and ending at the point where the trail intersects Grandview beach road in section 6, Tuscarora township, T35N R02W, Cheboygan county:

(i) At a speed greater than 35 miles per hour, except with written permission from a designated representative of the department.

(ii) Between 12 midnight and 8:00 a.m., except with written permission from a designated representative of the department.

(b) Operate a snowmobile upon that portion of the Cheboygan-Gaylord trail extending from a point beginning at the intersection of the trail corridor with M-27 in section 24, Inverness township, T37N R02W, and ending at the point where the trail intersects Grandview beach road in section 6, Tuscarora township, T35N R02W, Cheboygan county, except with written permission from the forest management field coordinator.

(10) The Montague-Berry junction trail means the former railroad right-of-way beginning in the city of Montague, section 21, T12N R17W, at the south terminus of the Hart-Montague trail state park, and ending in section 32, T11N R16W, Muskegon county and that spur in the city of Montague extending from section 21 to the west boundary of section 29. A person shall not operate snowmobile upon the Montague-Berry junction trail without written permission from the district parks and recreation supervisor, except that a snowmobile may be operated between white lake drive (north line of section 3, T11N R17W) and McMillan road (south line of section 29, T11N R16W).

(11) The Thompsonville-Viaduct road trail means the former railroad right-of-way beginning in the village of Thompsonville, section 36, T25N R14W, Benzie county, at its intersection with the department-owned former CSX railroad right-of-way, and ending at the boundary between sections 23 and 24, T24N R13W, Manistee county.

(12) A person shall not do any of the following on the Hancock to Calumet trail while within the city limits of Hancock, Houghton county:

(a) Operate a snowmobile in excess of 10 miles per hour.

(b) Operate a snowmobile or trail groomer, 55 inches or greater in width, except with written permission of the unit manager, Baraga management unit, forest resources division.

(c) Operate a snowmobile except on the paved, blacktop trail surfaces.

(13) The falling waters trail means the former railroad right-of-way beginning at Weatherwax road in section 16, Summit township, T3S R01W, thence traversing in a southwesterly direction a distance of approximately 4.4 miles, and ending at the centerline of Moscow road in section 23, spring arbor township, T3S R02W, Jackson county; and after approximately a 2.1 mile gap of state-ownership, beginning at the centerline of Teft road in section 29, spring arbor township, T3S R02W, thence traversing in a southwesterly direction a distance of approximately 3.9 miles,

and ending at approximately 172 feet from the railroad bridge over the Kalamazoo river in section 26, Concord township, T3S R3W, Jackson county. A person shall not do any of the following without written permission from a designated representative of the department upon the falling waters trail:

- (a) Discharge a firearm, bow and arrow, or crossbow.
- (b) Operate a snowmobile.
- (c) Use or occupy any portion of the trail corridor from dusk to dawn.
- (d) Ride or lead a horse, pack animal or other riding animal on the improved, paved portion of the trail corridor.
- (e) Consume or possess alcoholic beverages.
- (f) Possess a dog or other animal, unless it is under immediate control on a leash that is not more than 6 feet in length.

(14) Rogers city spur trail means the former railroad extending from section 8, T34N, R06E, Presque Isle county south to where it intersects with the Alpena to Hawks trail in section 8, T33N, R06E, Presque Isle county.

(15) Paxton spur trail means the former railroad extending from the King settlement road west to the Herron road in section 30, T31N, R07E, Alpena county.

(16) Marquette west connector of the Iron ore heritage trail means the former Duluth south shore and Atlantic railroad grade between the US-41 and M-28 overhead bridge in the city of Marquette in the SW ¼ of the NW ¼ of section 22, T48N R25W, Marquette county, and ending in the NE ¼ of the SE ¼ of section 34, T48N R26W, Marquette county. A person shall not do the following on the Marquette west connector of the Iron ore heritage trail:

- (a) Discharge a firearm, bow and arrow, or crossbow.
- (17) The Ishpeming-Humboldt rail-trail means the former railroad right-of-way beginning at Winthrop junction in the city of Ishpeming in the NE ¼ of the NW ¼ of section 16, T47N R27W, Marquette county, and ending in Humboldt at the intersection of county road 601 in the SE ¼ of the NE ¼ of section 10, T4N R29W, Marquette county. A person shall not do any of the following upon the Ishpeming to Humboldt rail-trail:

- (a) Discharge a firearm, bow and arrow, or crossbow.
- (b) Hunt on or from the grade.

4.43a Certain state-owned lands, Schoolcraft county, prohibited conduct.

Order 4.43a. A person shall not do any of the following on the described state-owned lands, Schoolcraft county:

- (1) Enter, use or occupy the closed forest road located in the SW1/4 of the SE1/4 of section 9, T43N R15W.
- (2) Enter, use or occupy the closed forest road located in the NW1/4 of the NE1/4 of section 8, T47N R14W.
- (3) Enter, use or occupy the closed forest road located in the SE1/4 of section 22, T44N R15W.
- (4) Enter, use or occupy the closed forest road located in the SW1/4 of the NW1/4 and the NW1/4 of the SW1/4 of section 35, T46N R16W.
- (5) Enter, use or occupy the closed forest roads located in sections 24, 25, and 36, T41N R172.
- (6) Enter, use or occupy the closed forest road located in sections 1 and 12, T41N R17W.

4.45 Repealed; Am. 7, 2018, Eff. December 13, 2018.

Publisher's note: This section pertained to "Certain state-owned lands, Mackinac county, motorized vehicles, prohibited conduct."

62

4.47 Repealed; Am. 7, 2018; Eff. December 13, 2018.

Publishers note: The repealed section pertained to "Certain Off-Road Vehicle Trails."

5.1 State parks and recreation areas, certain conduct prohibited.

Order 5.1 A person shall not do any of the following in any SP or recreation area:

(1) Have more than 1 horse for each registered camper at any designated horsemen's campground without first obtaining proper written permission from the department.

5.9 Off-road vehicles, Silver lake state park ORV area, conditions for use, prohibited conduct.

Order 5.9 A person shall not do any of the following on all state lands of Silver lake SP posted as the ORV area,

(1) Possess or consume an alcoholic beverage at any time in the ORV area, ORV voucher center area, or any area extending one-quarter of a mile from the boundary of the ORV area.

(2) To leave a vehicle, trailer, or other equipment or contrivance unattended in the ORV voucher center area at any time without first obtaining written permission from the Department.

(3) Operate a remote-controlled device within the ORV area.

5.17 Repealed; Am. 7, 2018; Eff. December 13, 2018.

Publisher's note: The repealed section pertained to "Off road vehicles in state parks; conditions for use, permit, prohibited conduct."

7.4 Blue lakes ranch, Montmorency county, vessel use, prohibited conduct, exceptions.

Order 7.4 (1) Except as provided in subsections (2) and (3) a person shall not use or operate a motorized vessel of any type on state-owned lands of the area commonly known as blue lakes ranch, Montmorency county, being all or portions of the following:

(a) The NW $\frac{1}{4}$ of the NW $\frac{1}{4}$, the SW $\frac{1}{4}$ of the NW $\frac{1}{4}$, and the NW $\frac{1}{4}$ of the SW $\frac{1}{4}$ of section 5; the NE $\frac{1}{4}$, the N $\frac{1}{2}$ of the SE $\frac{1}{4}$, and the SW $\frac{1}{4}$ of the SE $\frac{1}{4}$ of section 6; the NW $\frac{1}{4}$ of the NE $\frac{1}{4}$, the S $\frac{1}{2}$ of the NE $\frac{1}{4}$, and the SE $\frac{1}{4}$ of section 7; the SW $\frac{1}{4}$ of the NW $\frac{1}{4}$ and the W $\frac{1}{2}$ of the SW $\frac{1}{4}$ of section 8; the W $\frac{1}{2}$ of the NW $\frac{1}{4}$ and the W $\frac{1}{2}$ of the SW $\frac{1}{4}$ of section 17; entire section 18; entire section 19; all that part lying north and west of the black river except the N $\frac{1}{2}$ of the NE $\frac{1}{4}$ and the NE $\frac{1}{4}$ of the NW $\frac{1}{4}$ of section 20; and all that part lying north of hardwood creek and west of black river, section 30, T32N R1E.

(2) This order shall not apply to department employees and their designees using a motorized vessel to perform official duties, or to vehicles being used for fire, emergency or law enforcement purposes.

9.1 State-owned lands, motorized vehicle use prohibited, exception.

Order 9.1 (1) Unless otherwise provided in this chapter, an individual shall not operate a motorized vehicle, other than a snowmobile unless the motorized vehicle is operated on a forest road, designated route, designated trail, or designated area illustrated as open on the access map as published on the department website and dated December 14, 2018:

9.8 Beaver island state wildlife research area, Charlevoix county, motorized vehicles, prohibited conduct.

Order 9.8 (1) A person shall not enter, use, or occupy any designated campsite with a motorized vehicle.

Publishers note: Refer to section 3.38 for snowmobile restrictions.

9.9 Certain state-owned lands, Chippewa county, wheeled motorized vehicles, prohibited conduct.

Order 9.9 (1) A person shall not operate a wheeled motorized vehicle which is 65 inches or greater in width upon the Soo to Raco designated route located in sections 10, 11, 15, 21, 29, 31 and 32, T47N R1W, section 36, T47N R2W, sections 1, 2, 3 and 4, T46N R2W, and sections 11, 12, 14, 15, 16 and 17, T46N R3W.

9.10 Certain state-owned lands, Delta and Menominee counties, wheeled motorized vehicles, prohibited conduct.

Order 9.10 (1) The Escanaba-Hermansville restricted ORV route means the former Wisconsin central ltd. railroad right-of-way that is signed and maintained a restricted ORV route. Beginning in the city of Escanaba at the NW and NE $\frac{1}{4}$ line of the NE $\frac{1}{4}$ of section 21, T39N R23W, Delta county and ending in Hermansville at the NW $\frac{1}{4}$ of the

63

NE1/4 of section 11, T38N R27W, Menominee county. (1) A person shall not do any of the following upon the Escanaba-Hermansville restricted ORV route:

(a) Operate a wheeled motorized vehicle which is 65 inches or more in width.

(2) This section does not apply to the following circumstances:

(a) Trail segments that extend onto other trails, roads and routes that are open to other types of vehicles.

9.11 Certain state-owned lands, Dickinson county, motorized vehicles, prohibited conduct.

Order 9.11 (1) A person shall not operate a motorized vehicle, other than a snowmobile, from April 1 through November 30, without a written permit issued by the department on the following described state-owned lands, Dickinson county:

(a) Trail numbers 1 through 4 located in sections 6 and 7, T44N R27W, and in sections 1, 2, and 12, T44N R28W.

(b) Trail numbers 5 and 6 located in sections 30 and 31, T41N R29W, and section 36, T41N R30W.

(c) Trail numbers 11 through 13 located in sections 23, 24, and 26, T40N R29W, and section 20, T41N R28W.

(d) Trail numbers 16 and 17 located in section 19, T44N R29W, and section 24, T44N R30W.

(e) Trail number 18 located in section 21, T42N R27W.

(f) Lake Antoine, grade, snowmobile trail, that part lying and extending north of the Sturgeon river in section 13, T39N R29W, and that part lying in sections 2, 3, 11, and 12, T39N R29W, and lying east of the north-south county road in the center of section 4, T39N R29W.

Publishers note: Refer to section 4.17 for snowmobile restrictions.

9.12 Felch grade snowmobile trail, Dickinson, Menominee and Delta counties, prohibited conduct.

Order 9.12 A person shall not use a motorized vehicle, other than a snowmobile or snowmobile grooming equipment when snow depths exceed four inches on the Felch grade snowmobile trail being all or portions of:

(1) Sections 33, 34 and 35, T42N R28W; sections 1, 2, and 12, T41N R28W; and sections 7, 8, 9, 10, 13, 14, 15, and 24, T41N R27W, Dickinson county.

(2) Sections 19, 20, 28, 29, 34 and 35, T41N R26W; sections 2, 3, 4, 11, 12 and 13, T40N R26W; sections 18, 19, 20, 28, 29, 33, and 34, T40N R25W; and sections 2, 3, 11, 12 and 13, T39N R25W, Menominee county.

(3) Sections 18, 19, 20, 25, 26, 28 and 29, T39N R24W, and sections 19, 20 and 30, T39N R23W, Delta county.

Publishers note: Refer to section 4.18 for snowmobile restrictions.

9.13 Certain state-owned lands, Iron county, motorized vehicles, prohibited conduct.

Order 9.13 (1) A person shall not operate a motorized vehicle, other than a snowmobile, upon trail number 7 in section 36, T42N R32W, from April 1 through November 30, without a written permit issued by the department.

(2) A person shall not operate a motorized vehicle, other than a snowmobile, from April 1 through November 30 upon trail numbers 19 through 23 located in sections 14 and 19, T43N R31W; section 24, T42N R31W; section 31, T45N R32W; and section 35, T44N R31W, without a written permit issued by the department.

Publishers note: Refer to section 4.23 for snowmobile restrictions.

9.14 Certain state-owned lands, Marquette and Alger counties, prohibited conduct.

Order 9.14 (1) A person shall not do any of the following on the little Presque isle property in sections 17 to 20, and 29 to 32, T49N R25W, and sections 13, 24, 25 and 36, T49N R26W, Marquette county:

(a) Operate a motor vehicle, other than a snowmobile, in a manner that produces excessive noise.

(2) The Marquette to Munising junction trail means the former Wisconsin central limited railroad right-of-way beginning at Hampton street in the city of Marquette in the NW1/4 of the NE1/4 of section 26, T48N R25W,

(04)

Marquette county and ending at Munising junction in the SW1/4 of the SE1/4 of section 17, T46N R19W, Alger county. A person shall not do any of the following upon the Marquette to Munising junction trail:

(a) Operate a wheeled motorized vehicle which is greater than 65" in width between the intersection of the trail with Casino road in the SE1/4 of the NE1/4 of section 12, T47N R24W, Marquette county and the intersection of the trail with a north-south electric transmission line in the NE1/4 of the SW1/4 of section 17, T46N R19W, Alger county.

Publishers note: Refer to section 4.30 for snowmobile restrictions.

9.15 Certain state-owned lands, Menominee county, prohibited conduct.

Order 9.15 (1) A person shall not operate a motorized vehicle, other than a snowmobile, without a written permit issued by the department, from April 1 through November 30 upon:

(a) Trail numbers 8 through 10 lying within sections 22, 26, and 27, T36N R28W; section 6, T35N R25W; and section 16, T36N R25W, Menominee county.

(b) Trail numbers 14 through 15 lying within section 10, T37N R28W, and section 18, T37N R27W, Menominee county.

Publishers note: Refer to section 4.31 for snowmobile restrictions.

9.16 Certain state-owned trails, prohibited conduct.

Order 9.16 (1) A person shall not do any of the following on the Hancock to Calumet trail while within the city limits of Hancock, Houghton county:

(a) Operate a motorized vehicle, other than a snowmobile, in excess of 10 miles per hour.

(b) Operate a motorized vehicle, including but not limited to an ORV, other than a snowmobile or trail groomer, 55 inches or greater in width, except with written permission of the unit manager, Baraga management unit, forest resources division.

(c) Operate a motorized vehicle, other than a snowmobile, except on the paved, blacktop trail surfaces.

(2) The Ishpeming-Humboldt rail-trail means the former railroad right-of-way beginning at Winthrop junction in the city of Ishpeming in the NE 1/4 of the NW 1/4 of section 16, T47N R27W, Marquette county, and ending in Humboldt at the intersection of county road 601 in the SE 1/4 of the NE 1/4 of section 10, T4N R29W, Marquette county. A person shall not do any of the following upon the Ishpeming to Humboldt rail-trail:

(a) Operate a wheeled motorized vehicle which is 65 inches or more in width without written permission from the department.

Publishers note: Refer to section 4.40 for snowmobile restrictions.

9.17 Certain Off-Road Vehicle Trails.

Order 9.17 (1) A person shall not operate a wheeled motorized-vehicle having more than two wheels on the following designated off-road vehicle trails:

(a) Brevort – trout lake motorcycle trail located in Chippewa and Mackinac counties.

(b) Kinross motorcycle rail located in Chippewa county.

(c) Foreman lake motorcycle trail located in Chippewa county.

(d) Birch hill motorcycle trail located in Chippewa county.

(e) Sandtown motorcycle trail located in Mackinac and Luce counties.

(f) Newberry – Rexton motorcycle trail located in Mackinac and Luce counties.

(g) Porterfield lake motorcycle trail located in Marquette county.

65

(h) Bass lake motorcycle trail located in Marquette county.

(2) This section does not apply to the following circumstances and/or vehicles:

(a) Trail segments that extend onto other trails, roads and routes that are open to other types of vehicles.

9.18 State parks and recreation areas, certain conduct prohibited.

Order 9.18 A person shall not do any of the following in any state park or recreation area:

(2) Operate an unlicensed, wheeled motorized device capable of transporting a person on a park road or parking lot, unless otherwise permitted by posted notice. Use of such devices shall be permitted for individuals with mobility impairments.

9.19 Off-road vehicles, Silver lake state park ORV area, conditions for use, prohibited conduct.

Order 9.19 A person shall not do any of the following on all state lands of Silver lake SP posted as the ORV area, Oceana county:

(1) Operate an ORV from November 1 through March 31.

(2) Operate an ORV from April 1 through April 30 between the hours of 8:00 p.m. and 9:00 a.m.

(3) Operate an ORV from May 1 through September 15 between the hours of 10:00 p.m. and 9:00 a.m.

(4) Operate an ORV from September 16 through October 31 between the hours of 8:00 p.m. and 9:00 a.m.

(5) Operate any motor vehicle with four or more wheels that does not contain a seat and individual seat belt for each occupant of that vehicle. Those vehicles with automotive-type seating and fewer than four wheels shall be equipped with a seat belt for each occupant. Vehicle operators shall comply with the provisions of the Michigan child passenger safety law, MCL 257.710d, and all of the following provisions:

(a) Seat belts shall be in use by all occupants while the vehicle is in operation.

(b) An approved automotive manufactured restraining device, such as a lap belt or three- or four-point harness, is an acceptable seat belt.

(c) Seat belts and restraining devices, other than factory installed, shall be secured by bolting to the vehicle floor, frame, or roll bar.

(d) Any vehicle on which the operator straddles the seat, such as a motorcycle or an all-terrain vehicle (ATV), will be limited to the operator only as the sole occupant and no seat belt will be required.

(6) Operate a vehicle requiring seat belts where an occupant in the rear seat is not protected by a roll bar located immediately behind the occupant's seat as described in subsection (8) unless the rear seat occupants are wearing a safety approved for automotive use (A.N.S.I. or equal) helmet. The operator or occupant of a vehicle not required to meet seat belt specifications shall wear a safety helmet approved for automotive use (A.N.S.I. or equal) and protective eyewear.

(7) Operate a vehicle requiring seat belts without a warning flag mounted and extending over the front-most portion of the vehicle. Vehicles not requiring seat belts shall mount the warning flag on the rear of the vehicle. Vehicle operators shall comply with all of the following requirements:

(a) The warning flag shall be mounted on a staff that is securely bolted, welded, or secured to the vehicle. The warning flag shall maintain a minimum 10-foot height at standstill and a minimum 8-foot height under motion.

(b) The warning flag shall be mounted on the top-most end of the staff. The flag shall be rectangular, international orange in color, solid material, with a minimum length on the supporting side of five inches and a minimum length on the base side of 10 inches.

(8) Operate a vehicle requiring seat belts that is not equipped with an integral steel roof, or roll bar located immediately behind the operator, or roll cage, capable of supporting the weight of the vehicle. The operator and

66

occupants of a vehicle without a full front windshield shall wear protective eyewear. The operator of a vehicle equipped with a roll bar shall comply with all the following requirements:

- (a) The roll bar shall be welded or bolted to the floor or frame of the vehicle.
- (b) The roll bar shall be braced in such a manner as to prevent collapse.
- (c) The roll bar shall have clearance above, behind, and outside each seated occupant in the vehicle.

(9) Fail to submit to any of the following tests, or operate any vehicle that does not comply with all of the following:

(a) Vehicles shall be equipped with a muffler and spark arrester containing baffles, shall meet the muffler and spark arrester requirements specified in subsection (g) of section 81133 of Part 811, Off-Road Recreational Vehicles, Natural Resources and Environmental Protection Act, 1994 PA 451, MCL 324.81133(g), and shall successfully pass a muffler and spark arrester baffle test.

(b) A maximum noise level of 94 dB(A), or the current EPA emissions limit, shall be met. The testing provisions of current SAE J 1287, June 93 standard for ATV and motorcycle vehicles and SAE J 1169, March 93 for all other vehicles shall be followed and all vehicles shall pass a stationary sound level test. The stationary sound level test shall be administered from a 0.5-meter (19.69 inches) distance at one-half the engine's maximum rated RPM and as further described by current testing provisions for the particular vehicle.

(10) Operate any vehicle at any time without possessing a valid unrestricted operator's or chauffeur's license, except as follows:

(a) A person at least 12 years of age with an ORV safety certificate issued by this state or another state or a province of Canada may operate either an ATV or motorcycle with direct visual supervision by an adult. The direct supervision shall not be impaired by distance and must allow the adult the ability to direct the youth's actions by verbal communications. Electronic amplification of verbal communications shall not be used.

(b) An adult shall not allow an unlicensed youth to operate an ORV.

(c) An ORV operator licensed under a level two graduated driver's license shall only operate under the provisions of that license.

(11) Operate any type of vehicle and fail to present an operator's or chauffeur's license or ORV safety training certificate upon the demand of any law enforcement officer or state park personnel.

(12) Enter or use the ORV area without complying with all posted regulatory, zoning, or directional signs, or operate a vehicle except in the directional pattern established and marked within the ORV area.

(13) Enter or use the ORV Area without obtaining and displaying a valid ORV area parking lot voucher or dune ready voucher at any time when such requirement is posted.

(14) Operate any vehicle while towing a contrivance other than a disabled vehicle or trailer or tow a vehicle or trailer on other than the designated parking lot or paved entrance road without first obtaining proper written permission from the department. Passengers shall not occupy any trailer or disabled vehicle while it is being towed.

(15) Drive or operate any motor driven vehicle at speeds exceeding posted speed limits or perform exhibition-type driving within the parking area or entrance road/ramp to the ORV area, or the defined speed zone along the Lake Michigan shoreline. Exhibition-type driving means performing wheelies, spinning tires, cutting circles, jump starts, or other erratic or irresponsible or careless driving.

(16) Operate an ORV that is not titled.

67

9.20 Grand lake pike marsh, Presque isle county, entry prohibited at certain times, exception.

Order 9.19 (1) A person shall not use or operate a motorized vehicle, except a snowmobile, during the months of March, April and May on the access road, section 22, T34N R7E, Presque isle county, leading from highway US-23 to the Grand lake pike marsh.

Publishers note: Refer to section 7.5 for snowmobile restrictions.

9.21 State game and wildlife areas, motorized vehicles, prohibited conduct.

Order 9.20 In managed state game areas and wildlife areas designated in section 13.1 of the wildlife conservation order, an individual shall not operate or use an amphibious or all-terrain vehicle or any other motor-driven vehicle in any area posted "state game area - hunting by permit only," "wildlife refuge," or any area posted against such use, except for vehicles authorized by the department.

9.22 State public access boating sites, motorized vehicles, prohibited conduct, exceptions.

Order 9.21 (1) In the Lower Peninsula, an individual shall not enter, use, or occupy a state-operated public boating access site with an ORV except to set, place, erect, or use a fishing shanty, or to access a waterbody to operate an ORV on the frozen surface of public waters consistent with the dates identified on the access map as published on the department website.

(2) In the Upper Peninsula, an individual shall not enter the following state-operated public boating access sites with an ORV between April 1 and November 15:

- (a) Railroad dock boating access site 55-8, section 12, T31N R27W, Dickinson county
- (b) Goose lake boating access site 52-30, section 24, T47N R26W, Marquette county
- (c) Cedar river harbor, section 23, T35N R25W, Menominee county

9.23 Official duties, exception.

Order 9.22 This chapter shall not apply to department employees and their designees performing official duties, or to fire, emergency or law enforcement personnel performing official duties, or other parties with written permission from the department.

This amended order shall be posted on or after the 14th day of December, 2018.

Issued on this 13th day of December, 2018.



Keith Creagh
Director



RICK SNYDER
GOVERNOR

STATE OF MICHIGAN
DEPARTMENT OF NATURAL RESOURCES
LANSING



KEITH CREAGH
DIRECTOR

SUBMITTED: October 15, 2018
RESUBMITTED: November 13, 2018

MEMORANDUM TO THE DIRECTOR

Information: Natural Resources Commission

Subject: Order to Regulate Use of the Brandt Road Fen for the Poweshiek
Skipperling, Holly State Recreation Area, Oakland County
Land Use Order of the Director Amendment No. 09 of 2018

Authority:

The Natural Resources and Environmental Protection Act, 1994 PA 451, authorizes the Director to issue orders to implement land use rules.

Discussion and Background:

The Poweshiek skipperling butterfly is a federal and state endangered species. To minimize disturbance in Poweshiek skipperling habitat sites and consequently improve recovery success, the Department recommends restricting entry to the Brandt Road Fen within the Holly State Recreation Area from June 1 to September 1 when larval and flight activity take place.

The Poweshiek skipperling is a small butterfly that has been reported from seven states and one Canadian province. The core of its range at one time included western Minnesota, the eastern Dakotas, southern Manitoba, and northern Iowa. There are scattered populations in Wisconsin and southern Lower Michigan and historical records from northern Illinois and one site in northwest Indiana. In recent years, this species has undergone a dramatic decline in the number of occupied sites and in the number of adults at remaining localities. Because of the widespread decline, the Poweshiek skipperling was listed as a federal endangered species in October 2014.

The Poweshiek skipperling has been reported from 23 sites in southern Lower Michigan, however, most of these sites are historic, and the species is currently known at four sites in the state. At one time, the Brandt Road Fen and two other Michigan sites supported hundreds of adults, highlighting the overall importance of Michigan to the conservation of the species.

Issues Pros and Cons

Prior to the listing, Michigan contained approximately six percent of all known records of Poweshiek skipperlings range wide. Now, the Poweshiek skipperling only inhabits a fraction of its historical range and faces a high risk of extinction primarily due to habitat loss or destruction. Restricting entry to this critical habitat for the Poweshiek skipperling in the Brandt Road Fen is another management tool for the conservation of the species.

In recent months, the Poweshiek skipperling has gained significant media attention because of the rapid decline in population. Michigan, housing some of the few sites left of the species, has become a popular destination to view these endangered butterflies, specifically the Brandt Road Fen. The Brandt Road Fen is a 27-acre prairie fen that is not easily accessible. There are no trails that lead to this wetland area, so when visitors come to the site, they are damaging the critical habitat for this species. Restricting entry to this critical habitat will alleviate habitat destruction for the Poweshiek skipperling.

Biological

In Michigan, the Poweshiek skipperling occurs exclusively in prairie fen habitats. Prairie fen is a wetland community contained with scattered tamaracks and areas of shrubs. Specifically, the Brandt Road Fen contains 27 acres of complex wetlands that includes sedges, grasses, forbs, low shrubs and has over 100 native plants. The Brandt Road Fen was also designated as a critical habitat in 2015. The Poweshiek skipperling feed on the nectar of the native plants and eggs are laid on or very near the host plants. The Poweshiek skipperling larval activity and feeding occurs in the early spring and adults emerge into a single flight each year in mid to late June through late July, depending on weather conditions.

Social

There are many contributing factors to the population decline and possible extinction of the Poweshiek skipperling. Small colony sizes and isolation due to past habitat loss are the primary threats facing the Poweshiek skipperling in Michigan. Current stressors include habitat destruction, residential and commercial development, incompatible agricultural practices, and the rapid spread of invasive species. Surrounding the Brandt Road Fen are roads that disrupt the wetlands hydrology, salt spray and runoff that enter the fen and boost the growth of invasive species, and the surrounding landscape is a mix of lands including oak forest, agricultural fields, old fields, pine plantations, and rural residential. The Department currently manages the Brandt Road Fen, including hand cutting and herbiciding invasive plants and prescribed fires have occurred every year from 2005 to 2011. The Department is hopeful that restricting access to this site from June 1 to September 1 is another tool to manage this critical habitat for the Poweshiek skipperling.

Closing this 27-acre area from June 1 to September 1 will also allow hunters to access this site during the hunting seasons.

Economic

The Department excepts some budget expenses such as the making and posting of boundary signs.

Order to Regulate Use of the Brandt Road Fen for the Poweshiek Skipperling, Holly State
Recreation Area, Oakland County
Land Use Order of the Director Amendment No. 09 of 2018
Page 3
November 13, 2018

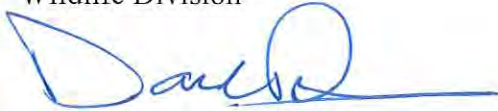
Relevant Divisions have contributed to the preparation of this order. This order was submitted for information on November 8, 2018, at the Natural Resources Commission meeting. This item appeared on the Department's October calendar and may be eligible for approval on December 13, 2018.



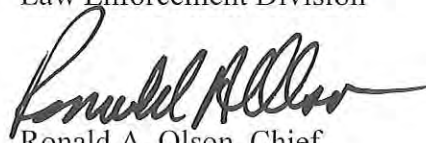
Russ Mason, Ph.D., Chief
Wildlife Division



Gary Hagler, Chief
Law Enforcement Division



For Deb Begalle, Chief
Forest Resources Division



Ronald A. Olson, Chief
Parks and Recreation Division



James Dexter, Chief
Fisheries Division



William O'Neil
Natural Resources Deputy

LAND USE ORDERS OF THE DIRECTOR

Amendment No. 09 of 2018

By authority conferred on the Director of the Department of Natural Resources by Section 504 of the Natural Resources Environmental Protection Act, 1994 PA 451, as amended, MCL 324.504, and in accordance with R 299.921 to R 299.933, the Director of the Department of the Natural Resources orders the following:

5.12 Certain state parks and recreation areas, requirements for use, certain conduct prohibited.

Order 5.12. The following conduct shall apply to use of Michigan state parks and recreation areas:

Fayette state park, certain conduct prohibited.

(1) A person shall not do the following at Fayette SP located in Delta county:

(a) Dive, swim, water ski, skin or scuba dive, or attempt to dive, swim, water ski, skin or scuba dive from any vessel operating within or moored to the docks or piling or anchored to the bottomlands of snail shell harbor, Fayette SP, Delta county, without written permission of an authorized representative of the department.

(b) Enter or occupy the face of the limestone cliffs in section 33, T39N R19W, and section 4, T38N R19W.

Palms book state park, prohibited conduct.

(2) A person shall not do any of the following at palms book SP:

(a) Swim, bathe, skin or scuba dive, fish, or boat in the big spring, Kitchitikiipi, palms book SP.

(b) Use the department owned raft on the big spring for anything other than viewing.

Island lake recreation area, conduct prohibited.

(3) A person shall not do the following at the island lake RA:

(a) Operate a vessel powered by a motor on the waters of spring mill pond.

Sterling state park, conduct prohibited.

(4) A person shall not do the following at Sterling SP:

(a) Launch or attempt to launch a vessel equipped with an inboard or outboard motor, except an electric motor, into the waters of the south lagoon from any state-owned lands lying south of the centerline of the park entrance road.

Pontiac lake recreation area, prohibited conduct.

(5) A person shall not do any of the following at the Pontiac lake RA:

(a) Possess or fly a hang glider on any state-owned lands within the Pontiac lake RA.

(b) Enter into a pen area or buffer zone around a pen area established by the department from June 10 to July 15 for the temporary holding of geese. This prohibition shall not apply to a person issued a written permit by the district wildlife supervisor allowing entry into the area.

Ludington state park, prohibited conduct.

(6) A person shall not do the following at Ludington SP:

(a) Park a vehicle of any type between the hours of 12:00 midnight and 6:00 a.m. in the parking areas adjacent to highway M-116 from the south limit of the park to the bridge over big Sable river.

South Higgins lake state park, prohibited conduct.

(7) A person shall not do the following at south Higgins lake SP:

(a) Park or leave a motor vehicle in the day use area of south Higgins lake SP between the hours of 10:00 p.m. and 8:00 a.m. without written permission from a representative of the department.

(b) Leave a trailer unattached to a vehicle in the boat launch parking lot.

(c) Park a vehicle without boat trailer attached, or a vehicle not being used to transport a boat, in the boat launch parking lot.

(d) A person shall not leave a vessel unattended, moored to access piers, in boat basin, beached along shoreline, or anchored to riparian bottomlands between the hours of 10:00 p.m. and 8:00 a.m., without prior written approval from an authorized representative of the department.

Pinckney recreation area, prohibited conduct.

(8) A person shall not do the following at the Pinckney RA:

(a) Use any state-owned lands in the S ½ of the S ½ of section 23, T1S R3E, for the purpose of launching or attempting to launch onto the waters of Island lake, any watercraft equipped with an inboard or outboard motor.

(b) Consume or possess any alcoholic beverage within ¼ mile surrounding and including the parking lot at Pickerel lake, section 8, T1S R4E, as posted.

(c) Launch or attempt to launch a vessel equipped with an inboard or outboard motor, except an electric motor, onto the waters of Pickerel lake, section 8, T1S R4E.

Silver lake state park, prohibited conduct.

(9) A person shall not do any of the following within Silver lake SP without first obtaining proper written permission from the department:

(a) Store, leave, park or otherwise place any boat, fish shanty, vehicle, bicycle, equipment, tool, device or other property which is at any time during its presence in the park made available for rent, lease, or sale.

(b) Use or occupy any land or water within the park to solicit, conduct, operate, engage in, or maintain a business of any nature or use such areas as a base of commercial operations. For purposes of this order, "base of operations" means a use of lands or waters which is a principal or significant aspect of any commercial activity.

Porcupine mountains wilderness state park, prohibited conduct.

(10) A person shall not do any of the following in the Porcupine mountains wilderness SP without first obtaining proper written permission from the department:

(a) Feed a bear or lure any bear with food. This provision does not apply to the lawful baiting of bear as described in orders issued pursuant to part 401, wildlife conservation, of Act 451 of 1994.

(b) Operate a snowmobile off the designated snowmobile route.

Waterloo recreation area, prohibited conduct.

(11) A person shall not do the following at the Waterloo RA:

(a) Enter into a pen area or buffer zone around a pen area established by the department from June 10 to July 15 for the temporary holding of geese. This prohibition shall not apply to a person issued a written permit by the district wildlife supervisor allowing entry into the area.

Fort Custer recreation area, prohibited conduct.

(12) A person shall not do the following at the fort Custer RA:

(a) Excavate, dig or probe the grounds, or remove ordnance without written permission.

(b) Operate a snowmobile off the designated snowmobile route.

Grand Haven state park campground, prohibited conduct.

(13) A person shall not do the following at Grand Haven SP:

(a) Place or allow a recreational camping unit under their control to be placed front-first upon a campsite in the Grand Haven SP campground. The tongue of a trailer or front of a self-propelled camping unit shall face the roadway.

(b) A person, including a person's camping unit, shall not remain for more than 15 nights in any 20 night period from May 15 through September 15 without the written permission of the district supervisor.

Holland state park, prohibited conduct.

(14) A person shall not possess or use furniture designed or intended for indoor use within Holland SP from May 15 to July 15 unless the furniture is enclosed within a camping shelter. Furniture that is designed or intended for indoor use and is placed outside of a camping shelter may be removed at the discretion of the park manager.

Sanilac petroglyphs historic state park, prohibited conduct.

(15) A person shall not do any of the following at the Sanilac petroglyphs historic SP:

(a) Enter into the fenced area containing the petroglyph rock when the entry gate is closed.

(b) Walk upon or otherwise come into contact with the petroglyph rock within the fenced area.

Ionia recreation area, prohibited conduct.

(16) A person that has been issued a campsite permit shall not possess or allow to be possessed upon the campsite more than 4 animals other than horses by all members of the camping party combined.

Seven lakes state park, prohibited conduct.

(17) A person shall not operate a snowmobile, or other motorized snow contrivance without written permission from an authorized representative of the department.

Port Crescent state park, prohibited conduct.

(18) With the exception of accessing Saginaw bay via the campground, a person shall not operate a snowmobile, or other motorized snow contrivance without written permission from an authorized representative of the department.

Holly recreation area, prohibited conduct.

(19) A person shall not do any the following:

(a) Operate a snowmobile or other motorized snow contrivance outside an area bordered by McGinnis road to the north, Wildwood road to the east and Dixie highway to the south, without written permission from an authorized representative of the department.

(b) Enter, use, or occupy any of the following described state-owned lands, as posted, from June 1 through September 1 except with written permission from the department:

(i) The area commonly known as the Brandt Road Fen within the N1/2 of the SW1/4 of section 12, T05N, R08E, Oakland county.

Algonac state park campground, prohibited conduct.

(20) A person shall not place or allow a recreational camping unit under their control to be positioned horizontal to the park's roadways in the riverfront campground. The tongue of a trailer or front or rear of a self-propelled camping unit shall face the park's roadway, and all camping units must be parked on pads where they exist.

Bay City state park, prohibited conduct

(21) A person shall not do any of the following at Bay City SP:

(a) Operate a snowmobile off the designated snowmobile route.

(b) Enter Tobico marsh wildlife refuge of Bay City SP, being those state-owned lands in section sections 24 of T15N R04E, and sections 19 and 30 of T15N R05E, bounded by a line beginning at the water's edge of the Tobico marsh wildlife refuge within section 24 where the Lesperance drain discharges into the Tobico marsh wildlife refuge which is located approximately 1150 feet east and 453 feet north of the center of section 24, T15N R04E, then continuing east parallel to the quarter-quarter section lines section of 24, T15N R04E, and 19, T15N R05E, to Killarney beach road and the eastern boundary of the posted state-owned land with the posted and designated state trail, then southeasterly along the west edge of the designated state trail located west of Killarney beach road to a point on the quarter-quarter section line and approximately 837 feet north of the intersection of little Killarney beach road with Killarney beach road, then west approximately 1766 feet parallel along said quarter-quarter section line approximately 1500 feet to a point on said quarter-quarter section line, then diagonally north-northwesterly approximately 5340 feet, to the point of beginning, excluding the posted and designated state trails, from September 1 to January 1 of each year without written permission from the wildlife regional supervisor or their representative.

(c) Launch a motorized vessel from state-owned lands onto the waters of Bay City SP, except department employees, designees of department employees, or fire, emergency, or law enforcement personnel performing official duties.

Rockport state recreation area, prohibited conduct.

(22) Operate a snowmobile in sections 13, 24, 25, 26, and the north 750 feet of sections 35 and 36, T33N, R08E, except along the 100-foot wide utility line corridor that parallels the Lake Huron shoreline; section 36, T33N, R08E and section 31, T33N, R09E east of the old railroad corridor that parallels the Lake Huron shoreline; the east half of the northeast quarter of section 12, the south half of section 12, and section 13, T32N, R08E; the south 600 feet of the southwest quarter of section 6, the southwest quarter of the northwest quarter of section 8, the northwest quarter and the south half of section 7, T32N, R09E, except a designated corridor extending from Rockport road south through section 7; and all state land on Middle island, sections 3, 4, 9, and 10, T32N, R09E.

Lime island state recreation area, prohibited conduct.

(23) Enter, use, occupy, moor, or dock onto, the southern half of the Lime Island coal dock, as posted, lying within T43N, R03E, Section 26 and T42N, R03E, section 35 between May 1 and September 1, except that boats may be moored on the eastern side of the entire coal dock for safety during high seas and storm events.

Belle isle park, prohibited conduct.

(24) A person shall not do any of the following at Belle isle park.

(a) Enter and remain or park a vehicle of any type on the premises of the Belle Isle ark, between the hours of 10:00p.m. and 5:00a.m., without permission of the department.

(b) Erect a canopy larger than 9 feet by 9 feet, and have more than 2 canopies per group unless with written permission of the department.

(c) Erect a canopy that is not open on two sides of the structure.

(d) Erect a canopy unless someone of 21 years of age or older is supervising.

(e) Skate, bicycle or use any similar contrivances on buildings or structures not otherwise developed for this purpose.

(f) Feed geese, gulls, and other bird species.

(g) Possess a grill of any type in and around playscapes, giant slides or next to buildings

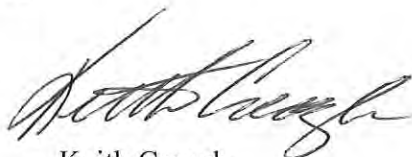
(h) Operate a snowmobile, or other motorized snow contrivance without written permission from an authorized representative of the department.

Watkins Lake state park and county preserve, prohibited conduct.

(25) Annually from September 1 through January 1 and from February 15 through May 15, a person shall not enter or take any animals from Watkins lake and the state-owned lands surrounding, unless authorized in writing by the Department, specifically being the SE 1/4, the SE 1/4 of the NE 1/4, and the S 1/2 of the SW 1/4 of the NE 1/4 of section 13, T04S R02E, within Watkins Lake state park and county preserve; except Arnold road and the associated upland roadside edge shall remain open to entry.

This amended order shall be posted on or after the 14th day of December, 2018.

Issued on this 13th day of December, 2018.



Keith Creagh
Director



RICK SNYDER
GOVERNOR

STATE OF MICHIGAN
DEPARTMENT OF NATURAL RESOURCES
LANSING



KEITH CREAGH
DIRECTOR

November 13, 2018

To: Keith Creagh, Director

Information: Natural Resources Commission

Transaction: Oil and Gas Lease Auction – 15,787.49 acres were offered October 30, 2018

Authority: Part 5, of the Natural Resources and Environmental Protection Act, 1994 PA 451, as amended

Applicants: The attached auction summary identifies the successful bidders, the total acreage, and the total revenue paid. There were seven registered bidders with five successful bidders.

Mineral Description: The Official Auction Record shows the legal descriptions for each offering.

Acres Bid: Of the 15,787.49 acres offered, a total of 3,861.91 acres received successful bids (2,735.61 acres development, 1,126.30 acres nondevelopment) in 8 counties.

Lease Terms: Five-year primary term with two one-year extension options, 1/6 royalty. Bonus amount of \$85,365.00 and rental amount of \$9,323.82. Total revenue generated at the auction was \$94,688.82.

Special Restrictions: In accordance with those described in the Official Auction Record for each applicable auction description.

Notice: This item will appear on the December 4, 2018, DNR Business Calendar, and will be eligible for approval December 13, 2018.

November 13, 2018

Recommendation: That the oil and gas leases be issued to the successful bidders pursuant to the above terms and conditions.



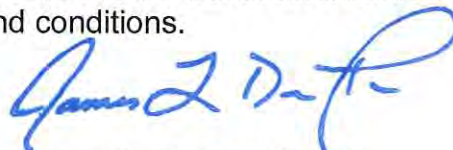
Mark B. Sweatman, Director
Office of Minerals Management



Russ Mason, Ph.D., Chief
Wildlife Division



William O'Neill
Natural Resources Deputy



James L. Dexter, Chief
Fisheries Division



Ronald A. Olson, Chief
Parks and Recreation Division



FOR Debbie A. Begalle, Chief
Forest Resources Division

I approve the staff recommendation.



Keith Creagh
Director

12/13/2018

Approval Date

State of Michigan
Oil and Gas Lease Auction
October 30, 2018

Bidder Number	Lessee	Total Acres	Total Bonus + Total Rental
101	Kosco Energy Group, LLC P.O. Box 4126 Traverse City, MI 49685	120.00	\$2,400.00
102	Mathew Maritz P.O. Box 4126 Traverse City, MI 49685	No Bid	No Bid
103	Savoy Energy, L.P., registered to transact business in Michigan as Savoy Energy Limited Partnership P.O. Box 1560 Traverse City, MI 49685	561.07	\$14,022.14
104	Jordan Development Company, L.L.C. 1503 Garfield Road North Traverse City, MI 49696	2,740.84	\$72,346.68
105	Clayton Energy Company P.O. Box 301 Jackson, MI 49204	80.00	\$1,600.00
106	Walden Energy Resources, LLC 3915 Creekside Drive Traverse City, MI 49684	360.00	\$4,320.00
107	Rich Patterson P.O. Box 610 Haslett, MI 48840	No Bid	No Bid
Totals:		3,861.91	\$94,688.82



RICK SNYDER
GOVERNOR

STATE OF MICHIGAN
DEPARTMENT OF NATURAL RESOURCES
LANSING



KEITH CREAGH
DIRECTOR

November 13, 2018

TO: Keith Creagh, Director

INFORMATION: Natural Resources Commission

Transaction: Sale of Surplus DNR-Managed Land
Rose Lake District – Washtenaw County
Land Transaction Case #20180169

Sale: 0.35 acre

Sale Price: \$5,000.00

Description: Washtenaw County, Dexter Township, T01S, R04E Section 2:
That part of Outlot A, Elm Grove Subdivision, as more completely
described in the case file.

PA 240 of 2018: The parcel is south of the Mason-Arenac line and will result in a
decrease of 0.35-acre of DNR-managed lands.

Applicant(s): Elm Grove Subdivision lot owners, Dexter Township, Michigan.

Authority: Natural Resources and Environmental Protection Act, 1994 PA 451,
as amended.

Notice: This item will appear on the Department of Natural Resources
(Department) December 4, 2018 calendar, and is eligible for approval
on December 11, 2018.

Acquired: By tax reversion in 1985.

Minerals: To be conveyed.

Comments: The applicants desire to acquire the small strip of shoreline portion of
Outlot A which lies between their rear lot lines and the waters of
Portage Lake. The land is surplus to state needs and has been a
chronic management issue for years. The submerged portion of
Outlot A will remain state-owned land for habitat management
purposes.

The proposed land disposal was recommended for approval as
surplus by the Land Exchange Review Committee on
October 17, 2017.

Proceeds from the sale will be deposited into the Land Exchange
Facilitation Fund (LEFF). The LEFF allows the Department to sell

80

November 13, 2018

rights in land and deposit the proceeds in a fund which can then be used to acquire replacement property.

Engagement: Due to the small size and restricted access to this property, no local engagement was initiated.

Recommendation(s): (1) That the land be sold to the applicants collectively for \$5,000.00 or sold at auction if the direct sale is declined.

(2) That the proceeds of the sale be deposited in the LEFF.

(3) That the state retain aboriginal antiquities and mineral rights.



Russ Mason, Ph.D., Chief
Wildlife Division


For

Deb Begalle, Chief
Forest Resources Division



James L. Dexter, Chief
Fisheries Division



Ronald A. Olson, Chief
Parks and Recreation Division

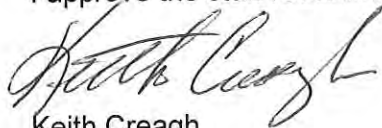


For William O'Neill
Natural Resources Deputy



Mark H. Hoffman
Chief Administrative Officer

I approve the staff recommendations.



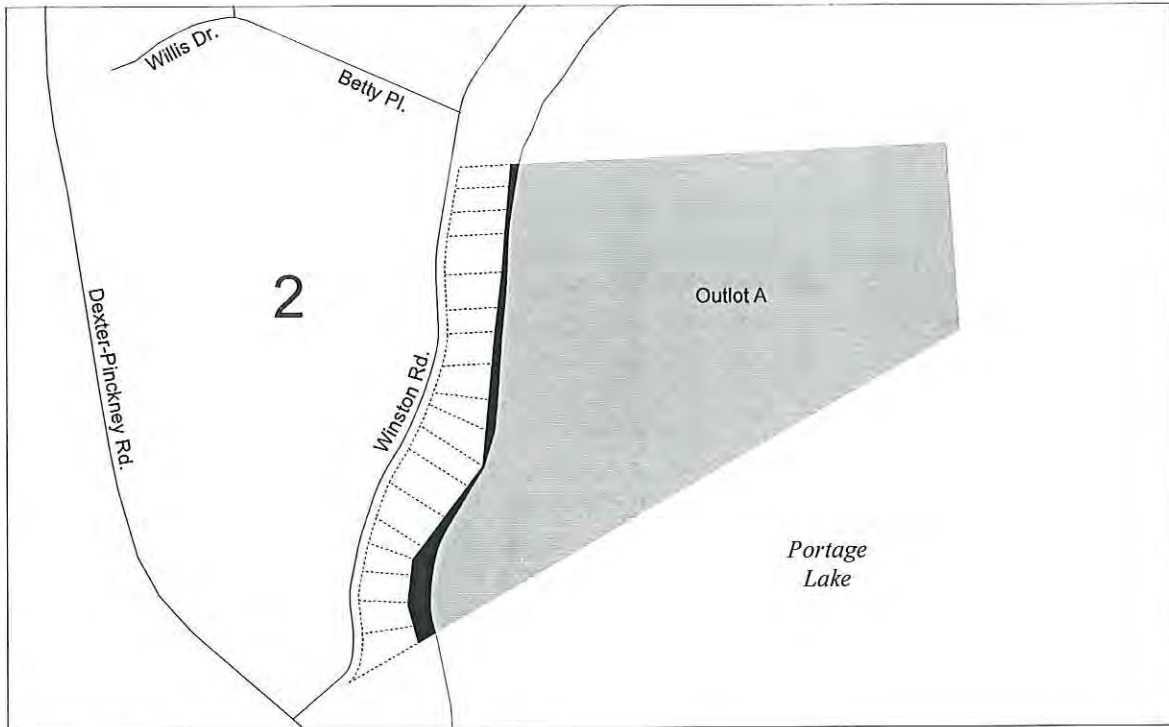
Keith Creagh
Director

12/13/2018

Date Approved

SALE OF SURPLUS DNR-MANAGED LAND

Rose Lake District – Washtenaw County
Land Transaction Case #20180169



Section 2, T01S, R04E, Dexter Township
Elm Grove Subdivision

- Surplus DNR land to be sold (0.35 acre)
- State land
- Private land





RICK SNYDER
GOVERNOR

STATE OF MICHIGAN
DEPARTMENT OF NATURAL RESOURCES
LANSING



KEITH CREAGH
DIRECTOR

November 13, 2018

TO: Keith Creagh, Director

INFORMATION: Natural Resources Commission

Transaction: Sale of Surplus DNR-Managed Land
Cadillac Management Unit – Lake County
Land Transaction Case #20170277

Sale: 0.16 acre

Sale Price: \$1,000.00

Description: Lake County, Pleasant Plains Township, T17N, R13W, Section 13:
Lots 31-32, Idlewild Terrace Subdivision.

PA 240 of 2018: This parcel is south of the Mason-Arenac County line and will result in a decrease of 0.00 acre to the total of DNR-managed lands.

Applicant: William Tack, Battle Creek, Michigan.

Authority: Natural Resources and Environmental Protection Act, 1994 PA 451, as amended.

Notice: This item will appear on the Department of Natural Resources (Department) December 4, 2018, calendar, and is eligible for approval on December 11, 2018.

Acquired: By tax reversion in 1969.

Minerals: Mineral rights will be conveyed.

Comments: The proposed surplus parcels are small lots and adjoin the applicant's property on two sides.

The proposed land disposal was recommended for approval as surplus by the Land Exchange Review Committee on April 19, 2018.

Proceeds will be deposited into the Land Exchange Facilitation Fund (LEFF). The LEFF allows the Department to sell rights in land and deposit the proceeds in a fund which can then be used to acquire replacement property.

82

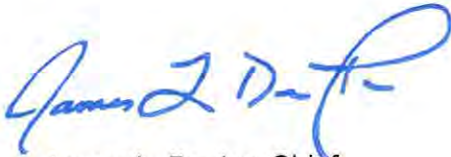
- Recommendation(s): (1) That the land be sold to the adjacent land owner for \$1,000.00.
- (2) That the proceeds of the sale be deposited in the Land Exchange Facilitation Fund.
- (3) That the state retain aboriginal antiquities.



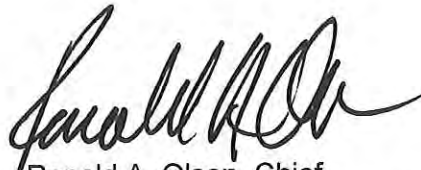
Russ Mason, Ph.D., Chief
Wildlife Division



Deb Begalle, Chief
Forest Resources Division



James L. Dexter, Chief
Fisheries Division



Ronald A. Olson, Chief
Parks and Recreation Division

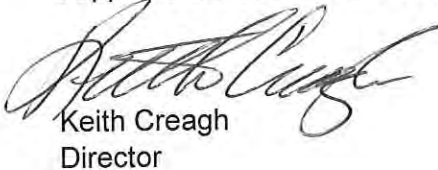


William O'Neill
Natural Resources Deputy



Mark H. Hoffman
Chief Administrative Officer

I approve the staff recommendations.



Keith Creagh
Director

12/13/2018
Date Approved

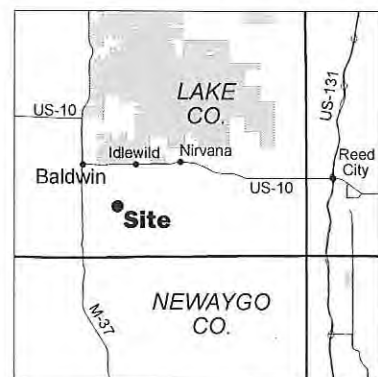
SALE OF DNR-MANAGED LAND

Cadillac Management Unit – Lake County
Land Transaction Case #20170277



Section 13, T17N, R13W, Pleasant Plains Township
Idlewild Terrace Subdivision

- Surplus DNR land to be sold (2 lots)
- State land
- Private land



DNR Project Boundaries



RICK SNYDER
GOVERNOR

STATE OF MICHIGAN
DEPARTMENT OF NATURAL RESOURCES
LANSING



KEITH CREAGH
DIRECTOR

November 13, 2018

TO: Keith Creagh, Director

INFORMATION: Natural Resources Commission

Transaction: Gift of Land
Cadillac District – William Mitchell State Park - Wexford County
Land Transaction Case #20180137

Gift: 93.28 acres

Description: Wexford County, Selma Township, T22N, R10W, Section 36:
The NW 1/4 of the SE 1/4 and the South 1/2 of the NE 1/4, as more
completely described in the file.

PA 240 of 2018: PILT Estimate: \$385.00
This parcel is located north of the Mason-Arenac line and will not result
in an increase in counted acres.

Donor: Keith and Leanna Johnson, Cadillac, Michigan.

Authority: Natural Resources and Environmental Protection Act, 1994 PA 451, as
amended.

Notice: This item will appear on the Department of Natural Resources
(Department) December 4, 2018, calendar, and is eligible for approval
on December 11, 2018.

Management
Purpose: The property will be managed by the Parks and Recreation Division as
additional outdoor recreation land as a part of William Mitchell State
Park.

Comments: The property lies adjacent to state-owned land on its easterly boundary
and is bisected by M-115. Portions of the property are covered in a mix
of wetland and upland providing significant wildlife habitat for many
game and non-game species, including black bear, bobcat, whitetail
deer, fur-bearing mammals, many species of songbirds, and many
species of reptiles and amphibians. The parcel's 2,700 feet of frontage
off M-115 offers opportunities for ADA/Barrier Free accessible hunting in
association with the Carl T. Johnson Hunting and Fishing Center located
within the William Mitchell State Park.

Acquisition of this property will contribute to the Department's goal by
helping secure additional outdoor recreational opportunities.

Engagement: Selma Township and Wexford County have been notified about this gift
of land and have not expressed any concerns.

- Recommendation(s):
1. That the gift of land be accepted with appreciation.
 2. That the offered property be dedicated as part of the William Mitchell State Park.
 3. That the William Mitchell State Park boundary be adjusted to include this parcel.



Russ Mason, Ph.D., Chief
Wildlife Division


Deb

Deb Begalle, Chief
Forest Resources Division



James L. Dexter, Chief
Fisheries Division



Ronald A. Olson, Chief
Parks and Recreation Division



William O'Neill
Natural Resources Deputy



Mark H. Hoffman
Chief Administrative Officer

I approve the staff recommendations.

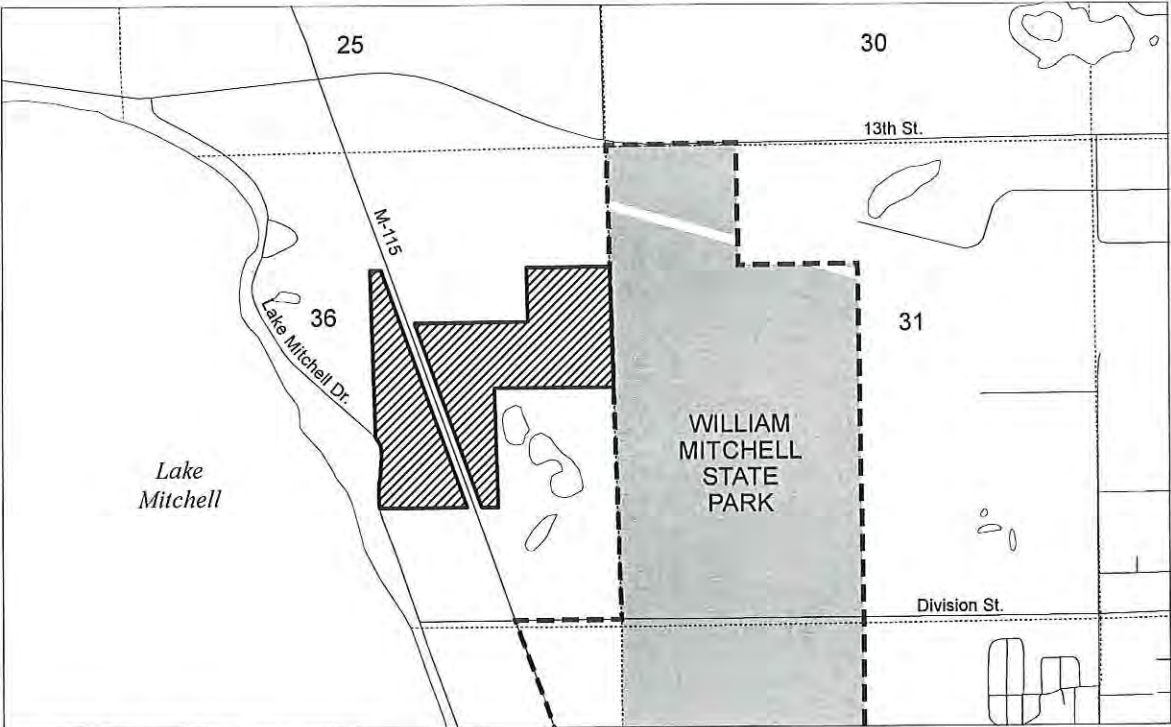


Keith Creagh
Director

12/13/2018
Date Approved

GIFT OF LAND

Cadillac District – William Mitchell State Park – Wexford County
 Land Transaction Case #20180137



Section 36, T22N, R10W, Selma Township

- Land to be gifted to DNR (93.28 acres)
- State land
- Private land
- DNR Project Boundary



DNR Project Boundaries



RICK SNYDER
GOVERNOR

STATE OF MICHIGAN
DEPARTMENT OF NATURAL RESOURCES
LANSING



KEITH CREAGH
DIRECTOR

November 13, 2018

TO: Keith Creagh, Director

INFORMATION: Natural Resources Commission

Transaction: Gift of Land
Plainwell District – Muskegon State Game Area – Muskegon County
Land Transaction Case #20180163

Gift: 40 acres

Description: Muskegon County, Cedar Creek Township, T11N, R15W, Section 25:
The South 1/2 of the South 1/2 of the NW 1/4.

PA 240 of 2018: PILT Estimate: \$165.00
This parcel is located South of the Mason-Arenac line and will not result
in an increase in counted acres.

Donor: Sylvia Taylor ET AL, Twin Lake, Michigan.

Authority: Natural Resources and Environmental Protection Act, 1994 PA 451, as
amended.

Notice: This item will appear on the Department of Natural Resources
(Department) December 4, 2018, calendar, and is eligible for approval
on December 11, 2018.

Management Purpose: The property will be managed by the Wildlife Division as wildlife habitat
and public outdoor recreation land as a part of the Muskegon State
Game Area.

Comments: The offered 40-acre property is covered in a mix of mature forest and
wetland and a portion of the Little Cedar Creek corridor. Little Cedar
Creek hosts a self-sustaining brown trout population and is a significant
tributary to the Muskegon River. The property is accessible via Tyler
Road along the southern boundary of the property.

Acquisition of this property will contribute to Departmental goals of
securing additional long-term hunting, trapping, and wildlife-related
recreational opportunities in southern Michigan.

The parcel will be withdrawn from the Commercial Forest Program
before acceptance of the property.

The seller will convey mineral rights to this tract.

Engagement: Cedar Creek Township supports the acquisition, and Muskegon County did not express any concerns.

Recommendation(s):

1. That the gift of land be accepted with appreciation.
2. That the offered property be dedicated as part of the Muskegon State Game Area.
3. That the Muskegon State Game Area boundary be adjusted to include this parcel.



Russ Mason, Ph.D., Chief
Wildlife Division


For

Deb Begalle, Chief
Forest Resources Division



James L. Dexter, Chief
Fisheries Division



Ronald A. Olson, Chief
Parks and Recreation Division


For

William O'Neill
Natural Resources Deputy



Mark H. Hoffman
Chief Administrative Officer

I approve the staff recommendations.



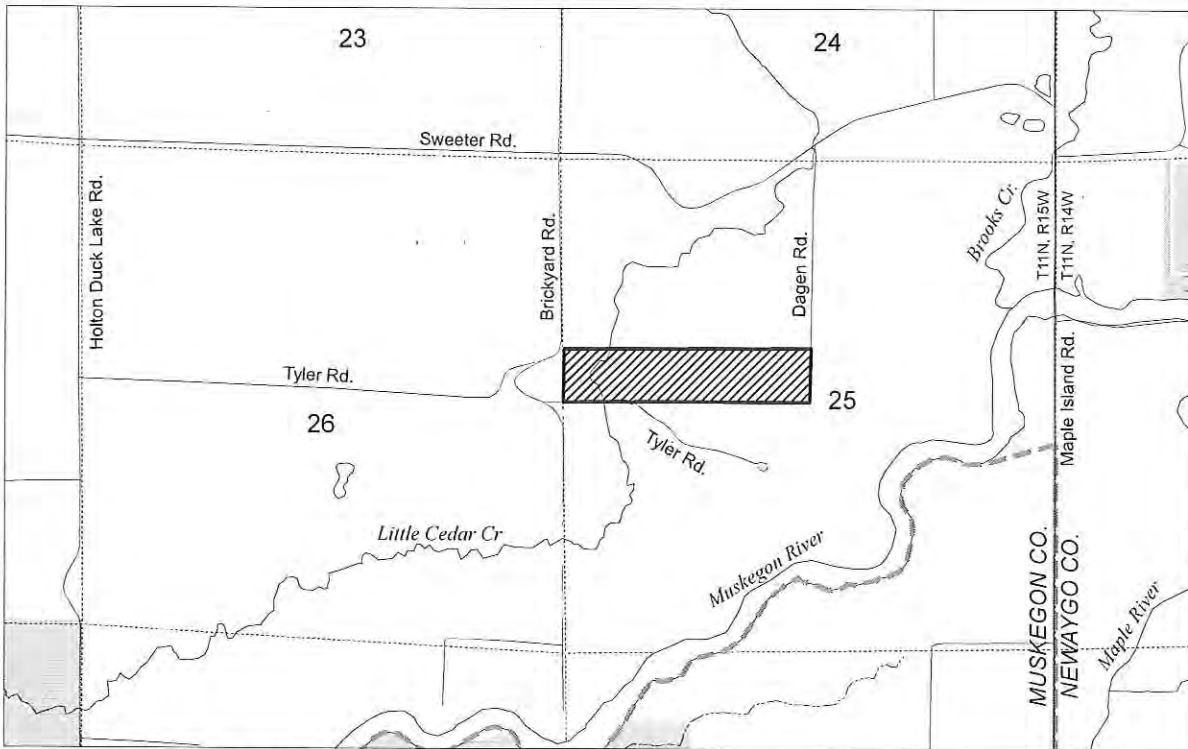
Keith Creagh
Director

12/13/2018

Date Approved

GIFT OF LAND

Plainwell District – Muskegon State Game Area – Muskegon County
Land Transaction Case #20180163



Section 25, T11N, R15W, Cedar Creek Township

- Land to be gifted to DNR (40 acres)
- State land
- Private land
- DNR Project Boundary





RICK SNYDER
GOVERNOR

STATE OF MICHIGAN
DEPARTMENT OF NATURAL RESOURCES
LANSING



KEITH CREAGH
DIRECTOR

November 13, 2018

TO: Keith Creagh, Director

INFORMATION: Natural Resources Commission

Transaction: Forest Resources Land Acquisition
Traverse City Management Unit – Grand Traverse County
Grand Traverse Regional Land Conservancy Tract
Land Transaction Case #20180167

Purchase: 160 acres - \$255,000.00

Funding Sources: Land Exchange Facilitation Fund (LEFF).

PA 240 of 2018: PILT Estimate: \$5,150.00
This parcel is located north of the Mason-Arenac County line and will result in an increase of 160 acres.

Description: Grand Traverse County, Whitewater Township, T27N, R09W, Section 20:
The Southeast quarter, including the Plat of Sportsman's Park, as recorded in Liber 11 of Plats, Page 3, Grand Traverse County Records.

Seller(s): Grand Traverse Regional Land Conservancy, Traverse City, Michigan.

Authority: Natural Resources and Environmental Protection Act, 1994 PA 451, as amended.

Notice: This item will appear on the Department of Natural Resources (Department) December 4, 2018 calendar, and is eligible for approval on December 11, 2018.

Management Purpose: The property is surrounded by state forest land. Acquisition of the property will allow it to be managed as part of the Traverse City Management Unit and consolidate state ownership for more efficient management of the state forest, wildlife habitat, and allow for increased public recreational opportunity.

Comments: The property is surrounded by state forest land and is known locally for its public recreational opportunity. The property contains a portion of the Traverse City to Kalkaska Trail and also contains a portion of the Vasa/TART trail system. Two incredibly popular mountain bike races also have a portion of their course than run through this property – the Iceman Cometh Challenge and the Mud, Sweat, and Beers race. In addition, this property provides the primary access route to Bullhead Lake, located directly north of the parcel.

Grand Traverse Regional Land Conservancy purchased the property from Grand Traverse County in 2016, when the county listed it for sale. There

KC

was strong local support to keep the property in public ownership. Due to it being surrounded by state forest land, the State of Michigan DNR is the best entity to manage the land.

The state already owns the mineral rights on this tract.

Engagement: The acquisition of this parcel has local support. Per Public Act 240 of 2018, additional public engagement will be completed prior to the closing of this acquisition.

Recommendation:

1. That the acquisition be approved, with payment to be made from the Land Exchange Facilitation Fund (LEFF).
2. This land is to be dedicated as part of the Traverse City Management Unit.



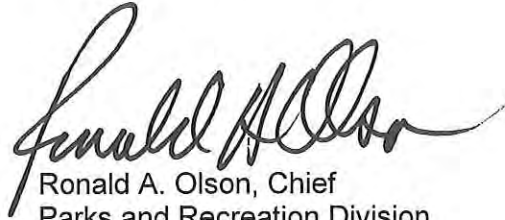
Russ Mason, Ph.D., Chief
Wildlife Division


FOR

Deb Begalle, Chief
Forest Resources Division



James L. Dexter, Chief
Fisheries Division



Ronald A. Olson, Chief
Parks and Recreation Division


For

William O'Neill
Natural Resources Deputy



Mark H. Hoffman
Chief Administrative Officer

I approve the staff recommendations.

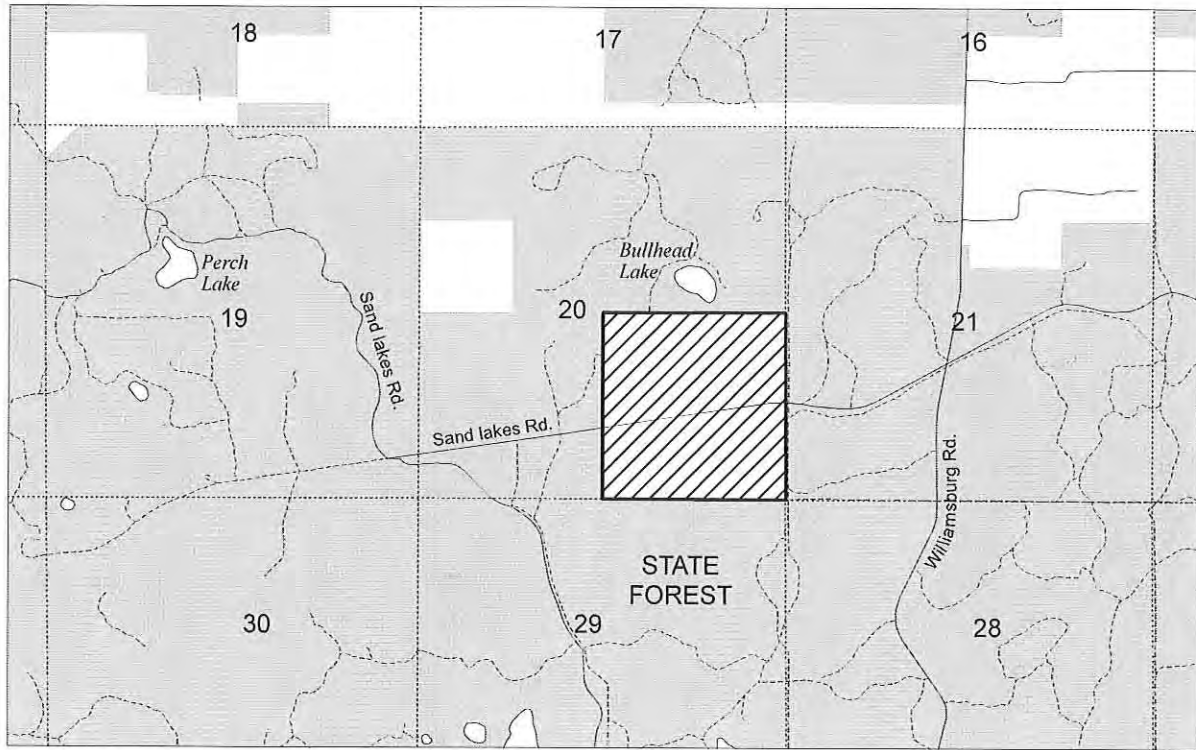


Keith Creagh
Director

12/13/2018
Date Approved

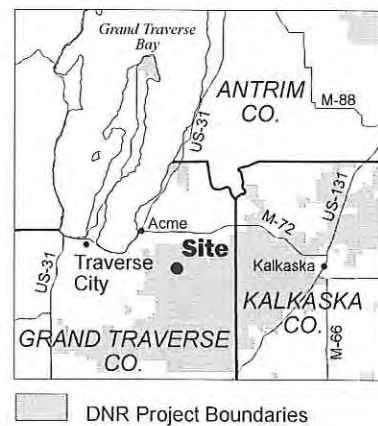
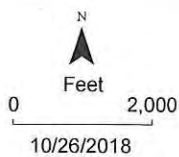
FOREST RESOURCES LAND ACQUISITION

Traverse City Management Unit – Grand Traverse County
Land Transaction Case #20180167



Section 20, T27N, R09W, Whitewater Township

- Land to be acquired by DNR (160 acres)
- State land
- Private land





RICK SNYDER
GOVERNOR

STATE OF MICHIGAN
DEPARTMENT OF NATURAL RESOURCES
LANSING



KEITH CREAGH
DIRECTOR

November 13, 2018

TO: Keith Creagh, Director

INFORMATION: Natural Resources Commission

Transaction: Wildlife Land Acquisition
Petersburg State Game Area – Monroe County
The Spotts Tract
Land Transaction Case #20180066

Purchase: 72.88 acres - \$360,000.00

Funding Sources: Michigan 7C Statewide Wetland (Waterfowl Capital Outlay) funds.

PA 240 of 2018: PILT Estimate: \$3,138.00
This parcel is located south of the Mason-Arenac County line and will result in an increase of 72.88 acres.

Description: Monroe County, Summerfield Township, T07N, R06E, Section 11:
Part of the North 1/2 of the SW 1/4, as more completely described in the case file.

Seller(s): Justin and Samantha Spotts – Deerfield, Michigan.

Authority: Natural Resources and Environmental Protection Act, 1994 PA 451, as amended.

Notice: This item will appear on the Department of Natural Resources (Department) December 4, 2018 calendar, and is eligible for approval on December 11, 2018.

Management Purpose: The property lies adjacent to state-owned land on the east and south and is accessible via Anders Road along the western boundary. The property lies within the dedicated boundary of the Petersburg State Game Area. Covered in a mix of cropland and woods, the property is an ideal addition to the game area. Acquisition of the property adds to and consolidates land managed as part of the Petersburg State Game Area. Wet soils on the site make it well suited to host wetland mitigation enhancements in concert with adjacent state-owned land.

Comments: The property features a mix of open cropland, wood lots, and the Stacy Drain which runs through the southeastern corner of the property. The property is ideal for wild turkey, deer, pheasant and water-fowl; and is well suited to wetland restoration activities.

96 -

The acquisition increases the amount of land available for public recreation in southern Michigan with low per capita access and is within the project boundaries of Wildlife Division administered lands.

The seller will convey mineral rights relative to this tract.

Engagement: Summerfield Township and Monroe County are supportive of the acquisition.

Recommendation(s): 1. That the acquisition be approved, with payment to be made from the Michigan 7C Statewide Wetland (Waterfowl Capital Outlay) funds.

2. This land is to be dedicated as part of the Petersburg State Game Area.



Russ Mason, Ph.D., Chief
Wildlife Division



FOR Deb Begalle, Chief
Forest Resources Division



James L. Dexter, Chief
Fisheries Division



Ronald A. Olson, Chief
Parks and Recreation Division



William O'Neill
Natural Resources Deputy



Mark H. Hoffman
Chief Administrative Officer

I approve the staff recommendations.



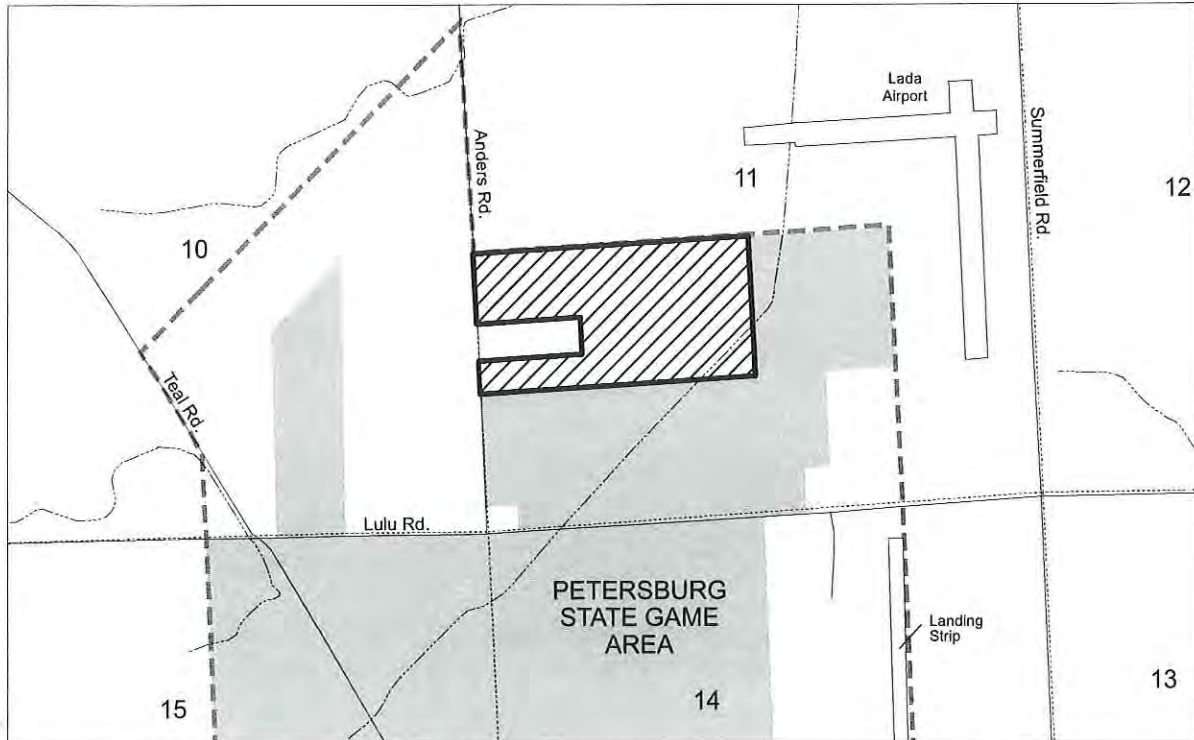
Keith Creagh
Director

12/13/2018

Date Approved

WILDLIFE LAND ACQUISITION

Petersburg State Game Area – Monroe County
The Spotts Tract
Land Transaction Case #20180066



Section 11, T07S, R06E, Summerfield Township

- Land to be acquired by DNR (72.88 acres)
- State land
- Private land
- DNR Project Boundary

