



GRETCHEN WHITMER  
GOVERNOR

STATE OF MICHIGAN  
DEPARTMENT OF NATURAL RESOURCES  
LANSING



DANIEL EICHINGER  
DIRECTOR

SUBMITTED: November 12, 2019  
RESUBMITTED: December 16, 2019

MEMORANDUM TO THE DIRECTOR

Information: Natural Resources Commission

Subject: Parks and Recreation Division (PRD) Management of State Forest Campgrounds  
Land Use Order of the Director Amendment No. 1 of 2020

Authority:

The Natural Resources and Environmental Protection Act, 1994 PA 451, authorizes the Director to issue orders to implement land use rules.

Discussion and Background:

Currently, existing state forest campgrounds are located on land administered by the Forest Resources Division (FRD), but PRD performs the day-to-day management and operation of the campgrounds. The intent of this order is to designate existing state forest campgrounds as “state parks” within the meaning of MCL 324.74101(g) to formally recognize PRD’s current land administration and management functions.

In 2012, the Department of Natural Resources (Department) transferred forest recreation activities to PRD, including management responsibilities of the state forest campgrounds identified below. An increased expectation for these lands has led to a desire to formalize the transfer of administration and management. Additionally, since park improvement funds are restricted for use only to support designated state parks and recreation areas, this designation will enable funds to be used to support the areas defined in this order.

To facilitate this conveyance, the lands identified below, consisting of and not exceeding a 50-foot perimeter around the most outer edge of the campsites, are to be dedicated within the meaning of MCL 324.74101(g) with administration and management to be formally undertaken by PRD. No area of any forest road is to be transferred, except those portions of any forest road contained within the 50-foot perimeter boundary. Additionally, all unrestricted hunting and fishing activities shall be allowed upon these lands during the applicable seasons, any development of these lands must be reviewed by the federal land staff and any development, maintenance or operation of the lands cannot violate the state’s assent legislation being, MCL 324.40501.

The state forest campgrounds consist of the following:

1. Alger county:
  - a. Forest lake state forest campground
  - b. Kingston lake state forest campground
2. Alpena county:
  - a. Ossineke state forest campground
  - b. Thunder bay state forest campground
3. Antrim county:
  - a. Graves crossing state forest campground
  - b. Pinney bridge state forest campground

December 16, 2019

4. Baraga county:
  - a. Beaufort lake state forest campground
  - b. Big Eric's bridge state forest campground
  - c. Big lake state forest campground
  - d. King lake state forest campground
5. In Benzie county:
  - a. Garey lake trail camp
  - b. Grass lake state forest campground
  - c. Lake Ann state forest campground
  - d. Platte river state forest campground
  - e. Veterans memorial state forest campground
6. Cheboygan county:
  - a. Black lake state forest campground
  - b. Black lake trail camp
  - c. Haakwood state forest campground
  - d. Maple bay state forest campground
  - e. Pine grove state forest campground
  - f. Stoney creek trail camp
  - g. Twin lakes state forest campground
  - h. Weber lake state forest campground
7. Chippewa county:
  - a. Andrus lake state forest campground
  - b. Detour state forest campground
  - c. Munuscong river state forest campground
8. Clare county:
  - a. Mud lake state forest campground
9. Crawford county:
  - a. 4 mile trail camp
  - b. Au Sable river state forest campground and canoe camp
  - c. Burton's landing state forest campground
  - d. Canoe harbor state forest campground and canoe camp
  - e. Goose creek state forest campground
  - f. Goose creek trail camp
  - g. Jones lake state forest campground
  - h. Keystone landing state forest campground
  - i. Lake margarethe state forest campground
  - j. Manistee river bridge state forest campground
  - k. Rainbow bend state forest campground and canoe camp
  - l. Shupac lake state forest campground
  - m. Upper Manistee river state forest campground and canoe camp
  - n. Walsh road equestrian state forest campground and trail camp
  - o. White pine canoe camp
10. Delta county:
  - a. Portage bay state forest campground
11. Dickinson county:
  - a. Carney lake state forest campground
  - b. Gene's pond state forest campground
12. Gladwin county:
  - a. House lake state forest campground

December 16, 2019

- b. Trout lake state forest campground
- 13. Grand Traverse county:
  - a. Arbutus lake state forest campground
  - b. Forks state forest campground
  - c. Lake Dubonnet state forest campground
  - d. Lake Dubonnet trail camp
  - e. Scheck's place state forest campground
  - f. Scheck's place trail camp
  - g. Spring lake state forest campground
- 14. Houghton county:
  - a. Emily lake state forest campground
- 15. Iosco county.
  - a. Van Etten lake state forest campground
- 16. Iron county.
  - a. Deer lake state forest campground
  - b. Glidden lake state forest campground
  - c. Lake Ellen state forest campground
- 17. Kalkaska county:
  - a. C.C.C. bridge state forest campground
  - b. Guernsey lake state forest campground
  - c. Pickerel lake state forest campground
  - d. Rapid river trail camp
- 18. Lake county:
  - a. Bray creek state forest campground
  - b. Carrieville state forest campground
  - c. Leverentz lake state forest campground
  - d. Lincoln bridge state forest campground
  - e. Silver creek state forest campground
- 19. Luce county:
  - a. Bass lake state forest campground
  - b. Blind sucker no. 1 state forest campground
  - c. Blind sucker no. 2 state forest campground
  - d. Bodi lake state forest campground
  - e. Culhane lake state forest campground
  - f. Headquarters lake equestrian state forest campground and trail camp
  - g. High bridge state forest campground
  - h. Holland lake state forest campground
  - i. Lake Superior state forest campground
  - j. Mouth of two hearted river state forest campground
  - k. Natalie state forest campground
  - l. Perch lake state forest campground
  - m. Pike lake state forest campground
  - n. Pretty lake state forest campground
  - o. Reed & Green bridge state forest campground
- 20. Mackinac county:
  - a. Big knob state forest campground
  - b. Black river state forest campground
  - c. Garnet lake state forest campground
  - d. Hog island point state forest campground

December 16, 2019

- e. Little brevoort lake north equestrian state forest campground and trail camp
- f. Milakokia lake state forest campground
- g. South Manistique lake state forest campground
- 21. Manistee county:
  - a. Healy lake state forest campground
- 22. Marquette county:
  - a. Anderson lake state forest campground
  - b. Bass lake state forest campground
  - c. Little lake state forest campground
  - d. Little Presque isle cabins
  - e. Squaw lake state forest campground
- 23. Menominee county:
  - a. Cedar river north equestrian state forest campground and trail camp
- 24. Midland county:
  - a. Black creek state forest campground
- 25. Missaukee county:
  - a. Goose lake state forest campground
  - b. Hopkins creek equestrian state forest campground and trail camp
  - c. Long lake state forest campground
  - d. Reedsburg dam state forest campground
- 26. Montmorency county:
  - a. Avery lake state forest campground
  - b. Big oaks equestrian state forest campground and trail camp
  - c. Ess lake state forest campground
  - d. Jackson lake state forest campground
  - e. Little wolf lake state forest campground
  - f. Town corner state forest campground
- 27. Ogemaw county:
  - a. Ambrose lake state forest campground
- 28. Osceola county.
  - a. Sunrise lake state forest campground
- 29. Oscoda county:
  - a. McCollum lake state forest campground
  - b. Mio pond state forest campground and group camp
  - c. Muskrat lake state forest campground
  - d. Parmalee bridge state forest campground and canoe camp
- 30. Otsego county:
  - a. Big bear lake state forest campground
  - b. Big bear pointe state forest campground
  - c. Elk hill equestrian state forest campground and trail camp
  - d. Johnson's crossing trail camp
  - e. Lake marjory state forest campground
  - f. Pickerel lake state forest campground
  - g. Pigeon bridge state forest campground
  - h. Pigeon river state forest campground
  - i. Round lake state forest campground
- 31. Presque isle county:
  - a. Ocqueoc falls state forest campground
  - b. Shoepac lake state forest campground

December 16, 2019

- c. Tomahawk creek flooding state forest campground
  - d. Tomahawk lake state forest campground
- 32. Roscommon county:
  - a. Houghton lake state forest campground
- 33. Schoolcraft county:
  - a. Canoe lake state forest campground
  - b. Cusino lake state forest campground
  - c. East branch of Fox river state forest campground
  - d. Fox river state forest campground
  - e. Mead creek state forest campground
  - f. Merwin creek state forest campground
  - g. North gemini lake state forest campground
  - h. Ross lake state forest campground
  - i. South Gemini lake state forest campground
- 34. Wexford county:
  - a. Baxter bridge state forest campground
  - b. Long lake state forest campground
  - c. Old U.S.-131 state forest campground.

These state forest campgrounds will continue with the historic management practice of co-management between FRD and PRD which includes maintaining forest certification.

December 16, 2019

Relevant Divisions have contributed to the preparation of this order. This order was submitted for information on December 12, 2019 at the Natural Resources Committee meeting. This item appeared on the Department's November 2019 calendar and may be eligible for approval on January 9, 2020.

Ronald A. Olson, Chief  
Parks and Recreation Division

Gary Hagler, Chief  
Law Enforcement Division

Deb Begalle, Chief  
Forest Resources Division

Daniel Kennedy, Acting Chief  
Wildlife Division

James Dexter, Chief  
Fisheries Division

Shannon Hanna  
Natural Resources Deputy

# **LAND USE ORDERS OF THE DIRECTOR**

## **Amendment No. 1 of 2020**

By authority conferred on the Director of the Department of Natural Resources by Section 504 of the Natural Resources Environmental Protection Act, 1994 PA 451, MCL 324.504, and in accordance with R 299.921 to R 299.933, the Director of the Department of Natural Resources orders the following:

### **4.4 Prohibited uses within and surrounding state forest campgrounds:**

Order 4.4 A person shall not do the following on state-owned lands:

(1) Camp on lands beginning at the boundaries of a state forest campground and extending outward therefrom for not more than 1 mile, as posted.

(2) Operate an electric bike in conflict with MCL 324.72105 at a state forest campground.

(3) Use, in any way, a sky lantern at a state forest campground.

(a) "Sky lantern" means an unmanned hot air balloon made of paper or other lightweight material that is launched into the atmosphere and has a flame inside the balloon.

(4) Operate an unmanned aircraft in conflict with the unmanned aircraft system act (PA 436 of 2016), and as follows at a state forest campground:

(a) In a manner that knowingly and intentionally interferes with department employees and their designees performing official duties.

(b) In a manner that interferes with department staff when conducting search and rescues.

(c) Within 100 yards of a cultural or historical site or structure.

(d) Over an occupied beach area.

(e) Over an equestrian facility.

(f) Over a restroom or open-air changing court.

(g) Over an area subject to an aerial right-of-way.

(h) For a commercial purpose without first obtaining written permission from an authorized representative of the department.

### **4.21 Certain state-owned lands, Grand Traverse county, camping, snowmobiles, dogs on groomed pathways, target shooting, prohibited conduct.**

Order 4.21 (1) A person shall not camp, except with written permit from the forest management division, on any state-owned lands lying south and east of the Boardman river in the W1/2 of the NE1/4 and E1/2 of the NW1/4 of section 8, T26NR9W, Grand Traverse county.

(2) A person shall not camp or use a snowmobile on any state-owned lands lying north of the Boardman river within the SW1/4 of the NW1/4 of section 13, T26N R11W, Grand Traverse county.

(3) A person shall not possess or allow a dog upon the state forest designated and groomed Muncie lakes and VASA cross country ski pathways, Grand Traverse county, from December 1 to April 15 unless the dog is a hunting dog or guide dog being used by a licensed hunter or handicapped person for that purpose.

(4) On state-owned land commonly known as Hoosier valley shooting area in sections 9, 14, and 15 of T26N, R11W, Grand Traverse county, a person shall not target, trap, or skeet shoot.

(5) On state-owned lands lying east of M37, north of Mill road, south of River road and west of Garfield road in sections 13, and 21-28 of T26N, R11W, and sections 17-21, 29, and 30, T26N, R10W, Grand Traverse county a person shall not target, trap, or skeet shoot.

(6) For the purposes of this order, the Supply road range shall mean the area upon state-owned lands north of Supply road in the NW1/4 of the NW1/4 of Section 13, T26N, R9W, Union township, Grand Traverse county. A person shall not do any of the following at the Supply road range:

- (a) Enter, use or occupy the range outside of designated range hours posted on site or when gates are closed.
  - (b) Target shoot before completing the sign in sheet.
  - (c) Target shoot without ear and eye protection.
  - (d) Target shoot at any object other than a paper target with a bullseye or depiction of legal game only affixed to target holders provided.
  - (e) Target shoot outside of existing shooting lanes.
  - (f) Use human form silhouettes or metal targets.
  - (g) Use a firearm other than a handgun on the 10-yard range.
  - (h) Use aerial, incendiary, explosive, armor piercing or tracer ammunition, including tannerite.
  - (i) Use a firearm other than pistol, revolver, shotgun, rifle, handheld firearm or muzzle loader.
  - (j) Use a firearm greater than .80 caliber.
  - (k) Utilize the shooting area while under the influence of alcohol or controlled substances.
- (7) This order does not apply to department employees, designees of department employees, law enforcement or other emergency personnel performing official duties.

#### **4.43 Certain state-owned lands, Roscommon county, camping, use or occupy lands, discharge of firearms, prohibited conduct**

Order 4.43 (1) A person shall not camp during the period of May 1 through September 14 within the W1/2 of the NE1/4 of the SW1/4 of section 32, T22N R1W, Roscommon county.

(2) A person shall not camp on state-owned lands within the E1/2 of the SE1/4 of the NE1/4 of the NE1/4, section 20, T22N R3W, Roscommon county.

(3) A person shall not discharge a firearm within the SE1/4 of the NE1/4 of the SE1/4 of the SE1/4 and the NE1/4 of the SE1/4 of the SE1/4 of section 15, T23N R1W, Roscommon county.

#### **5.19 Designation, management and administration of state forest campgrounds.**

Order 5.19 (1) The state forest campgrounds identified below, including a 50-foot perimeter around the most outer edge of the state forest campground campsites and all associated facilities, consisting of but not limited to boating access sites and day use areas, are dedicated as “state parks” under MCL 324.74101(g), and requires that:

(a) These state forest campgrounds will be managed utilizing the practice of co-management between the parks and recreation, wildlife and forest resources divisions.



(b) Any area of a forest road is not to be affected, except for those portions of any forest road contained within the 50-foot perimeter.

(c) All unrestricted hunting and fishing activities will continue to be allowed upon these lands during the applicable seasons.

(d) Any development or restrictions of these lands must be reviewed by the federal aid coordinator.

(e) Any development, operation, maintenance or restrictions of these lands cannot violate the state's assent legislation being, MCL 324.40501.

(f) These state forest campgrounds will continue to be in-scope for the purposes of forest certification and will remain certified under both the sustainable forestry initiative (SFI) and forest stewardship council (FSC) standards.

(2) These state forest campgrounds are as follows:

(a) In Alger county:

(i) Forest lake state forest campground.

(ii) Kingston lake state forest campground.

(b) In Alpena county:

(i) Ossineke state forest campground.

(ii) Thunder bay state forest campground.

(c) In Antrim county:

(i) Graves crossing state forest campground.

(ii) Pinney bridge state forest campground.

(d) In Baraga county:

(i) Beaufort lake state forest campground.

(ii) Big eric's bridge state forest campground.

(iii) Big lake state forest campground.

(iv) King lake state forest campground.

(e) In Benzie county:

(i) Garey lake trail camp.

(ii) Grass lake state forest campground.

(iii) Lake ann state forest campground.

(iv) Platte river state forest campground.

(v) Veterans memorial state forest campground.

(f) In Cheboygan county:

- (i) Black lake state forest campground.
- (ii) Black lake trail camp.
- (iii) Haakwood state forest campground.
- (iv) Maple bay state forest campground.
- (v) Pine grove state forest campground.
- (vi) Stoney creek trail camp.
- (vii) Twin lakes state forest campground.
- (viii) Weber lake state forest campground.

(g) In Chippewa county:

- (i) Andrus lake state forest campground.
- (ii) Detour state forest campground.
- (iii) Munuscong river state forest campground.

(h) In Clare county:

- (i) Mud lake state forest campground.

(i) In Crawford county:

- (i) 4 mile trail camp.
- (ii) Au Sable river state forest campground and canoe camp.
- (iii) Burton's landing state forest campground.
- (iv) Canoe harbor state forest campground and canoe camp.
- (v) Goose creek state forest campground.
- (vi) Goose creek trail camp.
- (vii) Jones lake state forest campground.
- (viii) Keystone landing state forest campground.
- (ix) Lake margarethe state forest campground.
- (x) Manistee river bridge state forest campground.
- (xi) Rainbow bend state forest campground and canoe camp.
- (xii) Shupac lake state forest campground.
- (xiii) Upper Manistee river state forest campground and canoe camp.

(xiv) Walsh road equestrian state forest campground and trail camp.

(xv) White pine canoe camp.

(j) In Delta county:

(i) Portage bay state forest campground.

(k) In Dickinson county:

(i) Carney lake state forest campground.

(ii) Gene's pond state forest campground.

(l) In Gladwin county:

(i) House lake state forest campground.

(ii) Trout lake state forest campground.

(m) In Grand Traverse county:

(i) Arbutus lake state forest campground.

(ii) Forks state forest campground.

(iii) Lake dubonnet state forest campground.

(iv) Lake dubonnet trail camp.

(v) Scheck's place state forest campground.

(vi) Scheck's place trail camp.

(vii) Spring lake state forest campground.

(n) In Houghton county:

(i) Emily lake state forest campground.

(o) In Iron county.

(i) Deer lake state forest campground.

(ii) Glidden lake state forest campground.

(iii) Lake ellen state forest campground.

(p) In Kalkaska county:

(i) C.C.C. bridge state forest campground.

(ii) Guernsey lake state forest campground.

(iii) Pickerel lake state forest campground.

(iv) Rapid river trail camp.

(q) In Lake county:

- (i) Bray creek state forest campground.
- (ii) Carrieville state forest campground.
- (iii) Leverentz lake state forest campground.
- (iv) Lincoln bridge state forest campground.
- (v) Silver creek state forest campground.

(r) In Luce county:

- (i) Bass lake state forest campground.
- (ii) Blind sucker no. 1 state forest campground.
- (iii) Blind sucker no. 2 state forest campground.
- (iv) Bodi lake state forest campground.
- (v) Culhane lake state forest campground.
- (vi) Headquarters lake equestrian state forest campground and trail camp.
- (vii) High bridge state forest campground.
- (viii) Holland lake state forest campground.
- (ix) Lake superior state forest campground.
- (x) Mouth of two hearted river state forest campground.
- (xi) Natalie state forest campground.
- (xii) Perch lake state forest campground.
- (xiii) Pike lake state forest campground.
- (xiv) Pretty lake state forest campground.
- (xv) Reed & green bridge state forest campground.

(s) In Mackinac county:

- (i) Big knob state forest campground.
- (ii) Black river state forest campground.
- (iii) Garnet lake state forest campground.
- (iv) Hog island point state forest campground.
- (v) Little brevoort lake north equestrian state forest campground and trail camp.
- (vi) Milakokia lake state forest campground.

(vii) South Manistique lake state forest campground.

(t) In Manistee county:

(i) Healy lake state forest campground.

(u) In Marquette county:

(i) Anderson lake state forest campground.

(ii) Bass lake state forest campground.

(iii) Little lake state forest campground.

(iv) Horseshoe lake state forest campground.

(v) Little presque isle cabins.

(vi) Squaw lake state forest campground.

(v) In Menominee county:

(i) Cedar river north equestrian state forest campground and trail camp.

(w) In Midland county:

(i) Black creek state forest campground.

(x) Missaukee county:

(i) Goose lake state forest campground.

(ii) Hopkins creek equestrian state forest campground and trail camp.

(iii) Long lake state forest campground.

(iv) Reedsburg dam state forest campground.

(y) In Montmorency county:

(i) Avery lake state forest campground.

(ii) Big oaks equestrian state forest campground and trail camp.

(iii) Ess lake state forest campground.

(iv) Jackson lake state forest campground.

(v) Little wolf lake state forest campground.

(vi) Town corner state forest campground.

(z) In Ogemaw county:

(i) Ambrose lake state forest campground.

(aa) In Osceola county.

- (i) Sunrise lake state forest campground.
- (bb) In Oscoda county:
  - (i) Mccollum lake state forest campground.
  - (ii) Mio pond state forest campground and group camp.
  - (iii) Muskrat lake state forest campground.
  - (iv) Parmalee bridge state forest campground and canoe camp.
- (cc) In Otsego county:
  - (i) Big bear lake state forest campground.
  - (ii) Big bear pointe state forest campground.
  - (iii) Elk hill equestrian state forest campground and trail camp.
  - (iv) Johnson's crossing trail camp.
  - (v) Lake marjory state forest campground.
  - (vi) Pickerel lake state forest campground.
  - (vii) Pigeon bridge state forest campground.
  - (viii) Pigeon river state forest campground.
  - (ix) Round lake state forest campground.
- (dd) In Presque Isle county:
  - (i) Ocqueoc falls state forest campground.
  - (ii) Shoepac lake state forest campground.
  - (iii) Tomahawk creek flooding state forest campground.
  - (iv) Tomahawk lake state forest campground.
- (ee) In Roscommon county:
  - (i) Houghton lake state forest campground
- (ff) In Schoolcraft county:
  - (i) Canoe lake state forest campground.
  - (ii) Cusino lake state forest campground.
  - (iii) East branch of Fox river state forest campground.
  - (iv) Fox river state forest campground.
  - (v) Mead creek state forest campground.

- (vi) Merwin creek state forest campground.
- (vii) North gemini lake state forest campground.
- (viii) Ross lake state forest campground.
- (ix) South gemini lake state forest campground.
- (gg) In Wexford county:
  - (i) Baxter bridge state forest campground.
  - (ii) Long lake state forest campground.
  - (iii) Old U.S.-131 state forest campground

#### **5.20 Prohibited conduct within state forest campgrounds:**

Order 5.20 (1) A person shall not enter, use, or occupy a designated state forest campground or associated facility with a motor vehicle without a valid Michigan recreation passport for entry.

(2) A person shall not camp with a horse in a state forest campground unless it has been designated as an equestrian state forest campground or a trail camp.

(3) A person shall not camp with more than 6 horses per campsite at an equestrian state forest campground or trail camp.

#### **5.21 Certain state-owned lands, grand traverse county, camping, prohibited conduct.**

Order 5.21 A person shall not camp upon, use or occupy spider lake state forest campground, section 10, T26N R10W, Grand traverse county, between the hours of 11 p.m. and 4 a.m.

#### **5.22 Certain state-owned lands, Roscommon county, camping, use or occupy lands, prohibited conduct.**

Order 5.22 (1) A person shall not camp, use, or occupy the twin lakes state forest campground in section 5, T21N R1W, Roscommon county.

(2) A person shall not camp, except in Reedsburg dam state forest campground, upon the NW1/4 of the NW1/4 and the SW1/4 of the SW1/4 of section 30; section 19; and the NW1/4 of the NW1/4 of section 31, T23N R4W, Roscommon county.

This amended order shall be posted on or after the 10th day of January, 2020.

Issued on this 9th day of January, 2020.

Daniel Eichinger  
Director



GRETCHEN WHITMER  
GOVERNOR

STATE OF MICHIGAN  
DEPARTMENT OF NATURAL RESOURCES  
LANSING



DANIEL EICHINGER  
DIRECTOR

December 16, 2019

**TO:** Daniel Eichinger, Director

**INFORMATION:** Natural Resources Commission

**Transaction:** Sale of Surplus DNR-Managed Land  
Traverse City Management Unit – Kalkaska County  
Land Transaction Case #20190145

**Sale:** 3.14 acres

**Sale Price:** \$1,000.00

**Description:** Kalkaska County, Rapid River Township, T28N, R07W, Section 4:  
Part of the SE 1/4 of the NE 1/4, as more accurately described in the  
case file.

**PA 240 of 2018:** This parcel is north of the Mason-Arenac county line and will result in a  
decrease of 3.14 acres of DNR-managed lands.

**Applicant(s):** Township of Rapid River, Kalkaska, Michigan

**Authority:** Natural Resources and Environmental Protection Act, 1994 PA 451,  
as amended.

**Notice:** This item will appear on the Department of Natural Resources  
(Department) December 31, 2019 calendar and is eligible for approval  
on January 7, 2020.

**Acquired:** By tax reversion in 1942.

**Minerals:** To be retained.

**Comments:** The desired parcel is L-shaped property that is adjacent to the existing  
township cemetery on two-sides. The township has requested the  
property in order to expand the existing cemetery. The sale of the  
parcel will not impact the state forest system.

The proposed land disposal was recommended for approval by the  
Land Exchange Review Committee on October 17, 2019.

The property will be conveyed with a deed restriction that the land  
shall only be used for public purposes.



- Recommendation:
1. That the land be sold to the applicant for \$1,000.00, with a restriction that the land shall only be used for public purposes.
  2. That the proceeds of the sale be deposited into the Land Exchange Facilitation Fund (LEFF).
  3. That the state retain mineral rights and aboriginal antiquities.

James L. Dexter, Chief  
Fisheries Division

Deb Begalle, Chief  
Forest Resources Division

Ronald A. Olson, Chief  
Parks and Recreation Division

Rex Ainslie, Acting Chief  
Wildlife Division

Shannon Hanna  
Natural Resources Deputy

Mark H. Hoffman  
Chief Administrative Officer

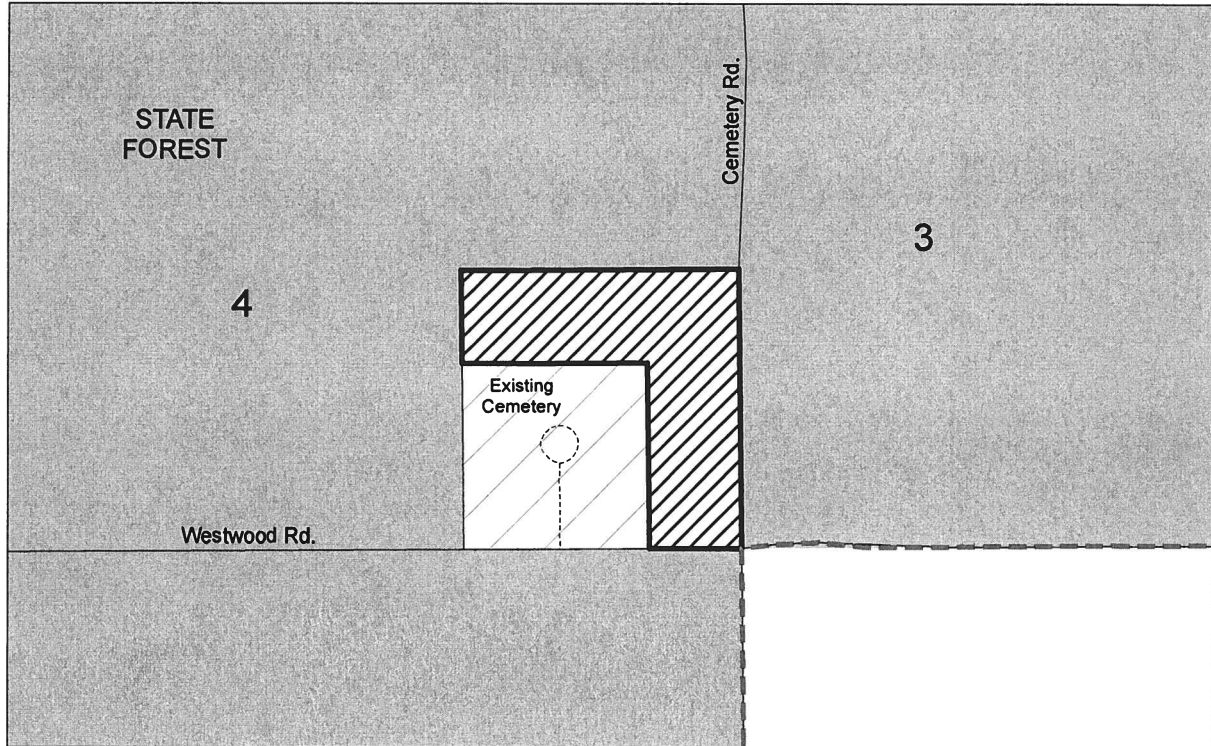
I approve the staff recommendations.

Daniel Eichinger  
Director





\_\_\_\_\_  
Date Approved

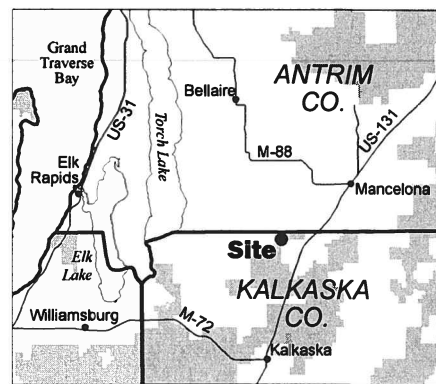
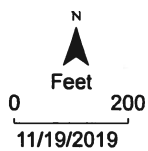
# SALE OF SURPLUS DNR-MANAGED LAND

Traverse City Management Unit - Kalkaska County  
Land Transaction Case #20190145



Section 4, T28N, R07W, Rapid River Township

-  Surplus DNR land to be sold (3.14 acres)
-  State land
-  Private land
-  DNR Project Boundary



 DNR Project Boundaries



GRETCHEN WHITMER  
GOVERNOR

STATE OF MICHIGAN  
DEPARTMENT OF NATURAL RESOURCES  
LANSING



DANIEL EICHINGER  
DIRECTOR

December 16, 2019

**TO:** Daniel Eichinger, Director

**INFORMATION:** Natural Resources Commission

**Transaction:** Release of Reverter  
Crystal Falls Management Unit – Dickinson County  
Land Transaction Case #20190130

**Sale:** 1 platted subdivision lot

**Sale Price:** Land to be conveyed for a nominal fee, subject to the condition that if the lands are subsequently sold, the proceeds from the sale be accounted for to the state, county, township, and school district in which the land is situated pro rata.

**Description:** Dickinson County, City of Kingsford, T39N, R31W, Section 11:  
Lot 24, Tramontine's First Addition, Village of Kingsford

**PA 240 of 2018:** The parcel is north of the Mason-Arenac county line. This transaction will not change the number of acres of counted DNR-managed lands because the platted surface rights are currently owned by the applicant.

**Applicant:** City of Kingsford, Kingsford, Michigan.

**Authority:** Natural Resources and Environmental Protection Act, 1994 PA 451, as amended.

**Notice:** This item will appear on the Department of Natural Resources (Department) December 31, 2019 calendar and is eligible for approval on January 7, 2020.

**Acquired:** The platted lot was acquired by tax reversion in 1931 and then deeded to the City of Kingsford in 1939 by a public use deed with a reverter clause.

**Minerals:** To be retained.

**Comments:** The desired lot was conveyed to the City of Kingsford subject to a reverter clause stating that the land is to be used for parks and street purposes only and, when it ceases to be used for that purpose, the land shall revert to the state. The City of Kingsford is asking for the reverter interest to be released.

The parcel is a small subdivision lot within the City of Kingsford and has no impact on the state forest system.

The proposed land disposal was reviewed and recommended for approval by the Land Exchange Review Committee on October 17, 2019.

**Recommendation:**

1. That the land be conveyed to the applicant for public purposes for a nominal fee, but subject to the condition that if the land is subsequently sold, the proceeds from the sale be accounted for to the state, county, township, and school district in which the land is situated pro rata.
2. That the state retain mineral rights and aboriginal antiquities.
3. That the proceeds are deposited into the Land Exchange Facilitation Fund (LEFF).

James L. Dexter, Chief  
Fisheries Division

Deb Begalle, Chief  
Forest Resources Division

Ronald A. Olson, Chief  
Parks and Recreation Division

Rex Ainslie, Acting Chief  
Wildlife Division

Shannon Hannah  
Natural Resources Deputy

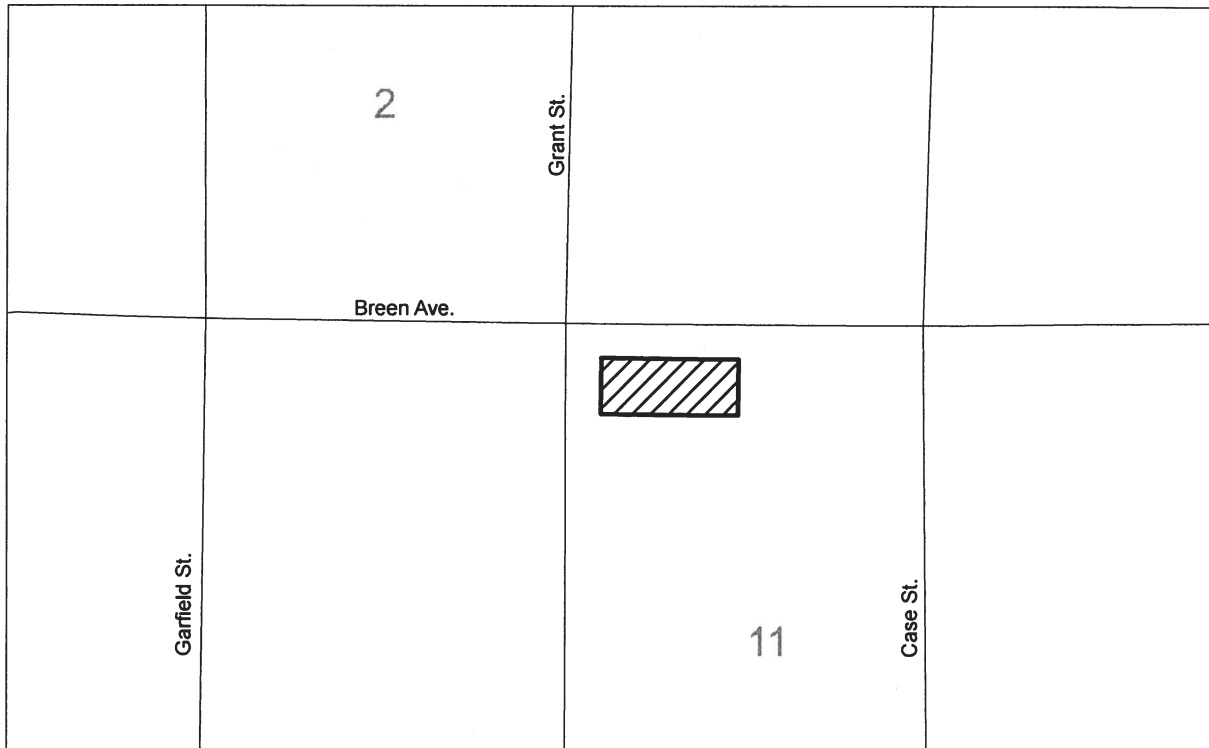
Mark H. Hoffman  
Chief Administrative Officer

I approve the staff recommendations.

Daniel Eichinger  
Director

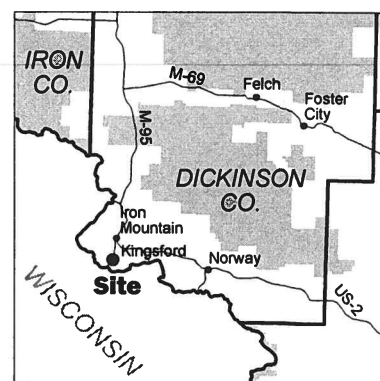
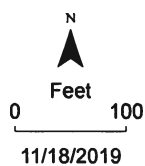
\_\_\_\_\_  
Date Approved

**RELEASE OF REVERTER  
AND CONVEYANCE OF DNR-MANAGED LAND**  
Crystal Falls Management Unit - Dickinson County  
Land Transaction Case #20190130



Section 11, T39N, R31W, City of Kingsford

-  DNR land to be conveyed (one platted lot)
-  Private land



 DNR Project Boundaries



GRETCHEN WHITMER  
GOVERNOR

STATE OF MICHIGAN  
DEPARTMENT OF NATURAL RESOURCES  
LANSING



DANIEL EICHINGER  
DIRECTOR

December 16, 2019

TO: Daniel Eichinger, Director

INFORMATION: Natural Resources Commission

Transaction: Forest Resources Land Exchange  
Pigeon River County Management Unit – Montmorency County  
Atlanta Management Unit – Montmorency County  
Shingleton Management Unit – Schoolcraft County  
The Bruot Exchange  
Land Transaction Case #20190047

Applicant: Richard and Deloris Bruot, Johannesburg, Michigan

PA 240 of 2018: PILT Estimate: \$40.00  
The parcels involved in this exchange are north of the Mason-Arenac county line and will result in a decrease of 1 acre in DNR-managed lands.

---

**Private Land Offered in Exchange:**

Acreage: 10 acres

Location: Schoolcraft County, Seney Township, T46N, R14W, Section 3:  
That portion of the NE 1/4 of the SW 1/4 lying southwesterly of the Fox River.

Value: \$40,000.00

---

**State Land Desired in Exchange:**

Acreage: 11 acres

Location: Montmorency County, Vienna Township, T31N, R01E, Section 5:  
That part of the NW 1/4 of the NW 1/4 lying north of Black River Road; and

Montmorency County, Montmorency Township, T32N, R01E, Section 31:  
That part of the SE 1/4 of the SE 1/4 lying southeasterly of the Black River.

Value: \$34,000.00

---

Authority: Natural Resources and Environmental Protection Act, 1994 PA 451, as amended.

Notice: This item will appear on the Department of Natural Resources (Department) December 31, 2019 calendar and is eligible for approval on January 7, 2020.

Comments: The desired state-owned land does not have legal access for department management or public recreation. It adjoins the applicant's land and will provide consolidated ownership for the applicant and the department.

The offered land will provide access to the Fox River. It will consolidate state ownership, provide increased recreational opportunity on the Fox River, and allow the Fox River Pathway to be relocated alongside the river in this area.

The state will retain mineral rights on the desired land due to their high value and currently being under lease. The state already owns the mineral rights on the offered property.

The desired state lands were acquired by exchange in 1960 and tax reversion in 1932.

The proposed land exchange was recommended for approval by the Land Exchange Review Committee on June 12, 2019.

Recommendation(s):

1. That the exchange be approved, with the state reserving mineral rights and aboriginal antiquities.
2. That the offered land be dedicated as part of the Shingleton Management Unit.



James L. Dexter, Chief  
Fisheries Division

Deb Begalle, Chief  
Forest Resources Division

Ronald A. Olson, Chief  
Parks and Recreation Division

Rex Ainslie, Acting Chief  
Wildlife Division

Shannon Hanna  
Natural Resources Deputy

Mark H. Hoffman  
Chief Administrative Officer

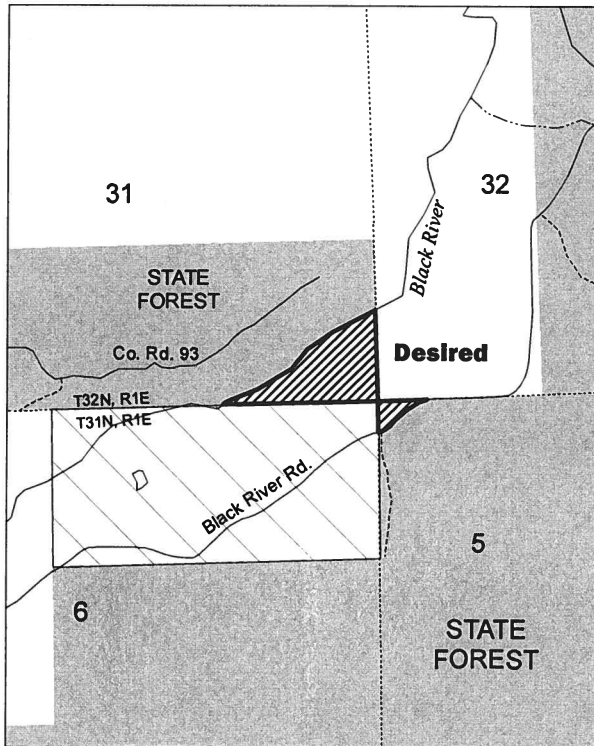
I approve the staff recommendations.

Daniel Eichinger  
Director

\_\_\_\_\_  
Date Approved

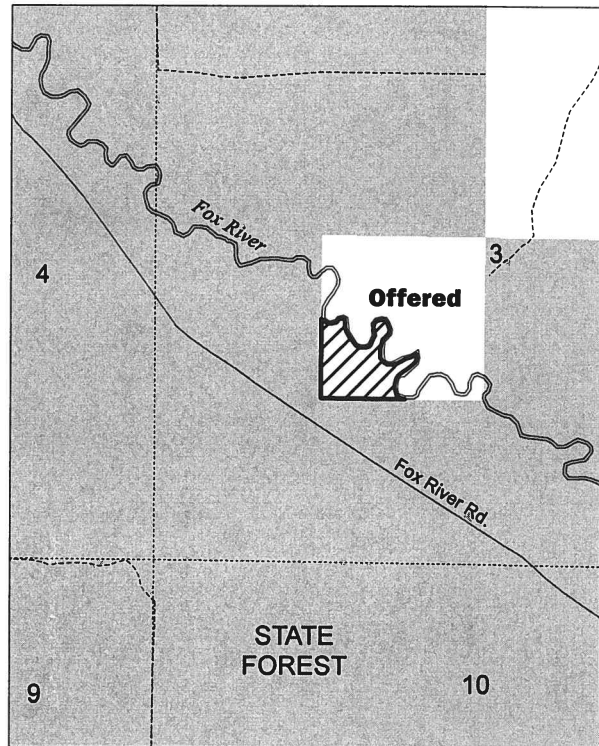
# FOREST RESOURCES LAND EXCHANGE

Pigeon River Country Management Unit - Montmorency County  
 Atlanta Management Unit - Montmorency County  
 Shingleton Management Unit - Schoolcraft County  
 Land Transaction Case #20190047



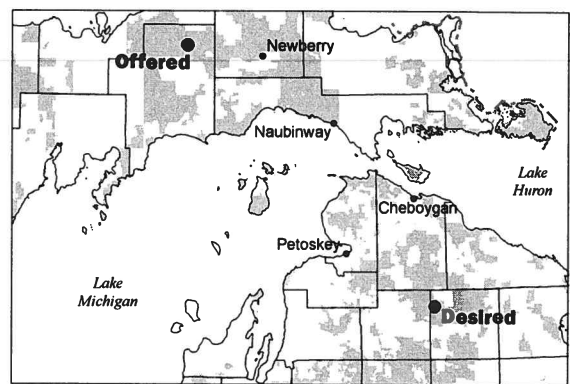
Section 31, T32N, R01E, Montmorency Township  
 Section 5, T31N, R01E, Vienna Township

- State land desired from DNR (11 acres)
- Applicant's land
- State land
- Private land



Section 3, T46N, R14W, Seney Township

- Land offered to DNR in exchange (10 acres)
- State land
- Private land



DNR Project Boundaries

11/20/2019



GRETCHEN WHITMER  
GOVERNOR

STATE OF MICHIGAN  
DEPARTMENT OF NATURAL RESOURCES  
LANSING



DANIEL EICHINGER  
DIRECTOR

December 16, 2019

**TO:** Daniel Eichinger, Director

**INFORMATION:** Natural Resources Commission

**Transaction:** Forest Resources Land Acquisition  
Grayling Management Unit – Crawford County  
The Guimond Tract  
Land Transaction Case #20190183

**Purchase:** 52 acres - \$80,000.00

**Funding Source:** Land Exchange Facilitation Fund

**PA 240 of 2018:** PILT Estimate: \$790.00  
This parcel is located north of the Mason-Arenac county line and will result in an increase of 52 acres of DNR-managed lands.

**Description:** Crawford County, Lovells Township, T27N, R01W, Section 10:  
The SW 1/4 of the SE 1/4 and that part of the SE 1/4 of the SE 1/4, lying west of the middle thread of the West Branch of Big Creek.

**Seller(s):** Nancy Guimond, Punta Gorda, Florida

**Authority:** Natural Resources and Environmental Protection Act, 1994 PA 451, as amended.

**Notice:** This item will appear on the Department of Natural Resources (Department) December 31, 2019 calendar and is eligible for approval on January 7, 2020.

**Management Purpose:** Acquisition of this property will allow it to be managed as part of the Grayling Management Unit. The property is located on the West Branch of Big Creek which is a tributary of the AuSable River, a designated Natural River and high-quality trout stream. The property will be managed primarily as an access site for the West Branch of Big Creek.

**Comments:** This tract of land is approximately 52 acres of vacant land with approximately 1,400 feet of frontage on the West Branch of Big Creek. The property is adjacent to state-owned land on the west. Acquisition of this parcel will provide additional opportunities for wading anglers and recreational paddlers, as well as protect the natural characteristics of the West Branch of Big Creek.

The seller will convey mineral rights relative to this property.

- Recommendation:
1. That the acquisition be approved, with payment to be made from the Land Exchange Facilitation Fund.
  2. That this land be dedicated as part of the Grayling Management Unit.

James L. Dexter, Chief  
Fisheries Division

Deb Begalle, Chief  
Forest Resources Division

Ronald A. Olson, Chief  
Parks and Recreation Division

Rex Ainslie, Acting Chief  
Wildlife Division

Shannon Hanna  
Natural Resources Deputy

Mark H. Hoffman  
Chief Administrative Officer

I approve the staff recommendations.

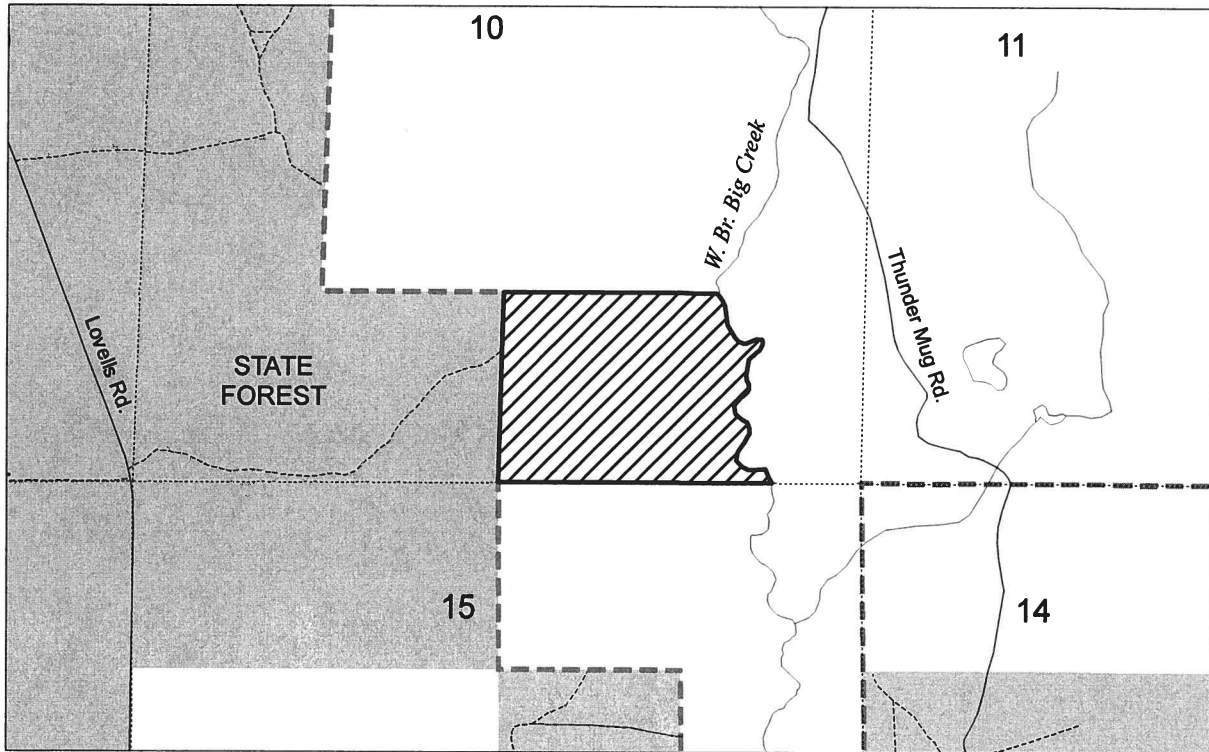
Daniel Eichinger  
Director

---

Date Approved

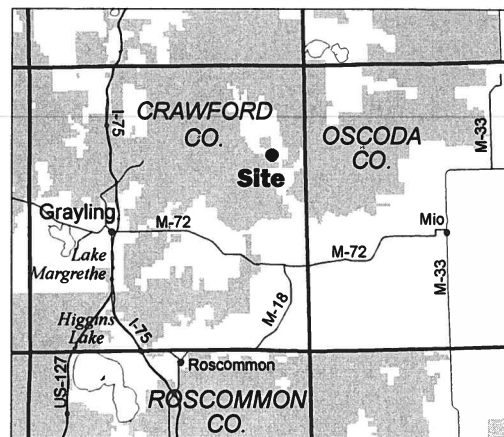
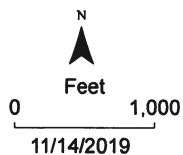
# FOREST RESOURCES LAND ACQUISITION

Grayling Management Unit - Crawford County  
Land Transaction Case #20190183



Section 10, T27N, R01W, Lovells Township

- Land to acquired by DNR (52 acres)
- State land
- Private land
- DNR Project Boundary



DNR Project Boundaries



GRETCHEN WHITMER  
GOVERNOR

STATE OF MICHIGAN  
DEPARTMENT OF NATURAL RESOURCES  
LANSING



DANIEL EICHINGER  
DIRECTOR

SUBMITTED: November 25, 2019  
RESUBMITTED: December 16, 2019



MEMORANDUM TO THE NATURAL RESOURCES  
COMMISSION

Subject: Fisheries Order 200.20  
Statewide Trout, Salmon, Whitefish, Cisco, Grayling, and Smelt Regulations

Authority:

The Natural Resources and Environmental Protection Act, 1994 PA 451, authorizes the Director and the Commission to issue Orders to regulate the taking of fish in the waters of this state.

Discussion and Background:

Fisheries Order 200.20, with an effective date of April 1, 2020, was approved by the Commission at the November 7, 2019, Natural Resources Commission meeting. At the request of the Commission, the Department is submitting the approved November 7, 2019, order for information and further consideration at the December 12, 2019, meeting and action at the January 9, 2020, meeting.

Recommendation:

Relevant Divisions have contributed to the preparation of this Order. This Order is being submitted for information and consideration. This item appeared on the Department's December 3, 2019, calendar and may be eligible for approval on January 9, 2020.

James Dexter, Chief  
Fisheries Division

Gary Hagler, Chief  
Law Enforcement Division

Rex Ainslie, Acting Chief  
Wildlife Division

Debbie Begalle, Chief  
Forest Resources Division

Ronald A. Olson, Chief  
Parks and Recreation Division

Shannon Hanna  
Natural Resources Deputy

I have analyzed and discussed these recommendations with staff and concur as to matters over which the Director has authority.

\_\_\_\_\_  
Daniel Eichinger, Director

\_\_\_\_\_  
Date

# FISHERIES ORDER

## Statewide Trout, Salmon, Whitefish, Cisco, Grayling, and Smelt Regulations Order 200.20

By authority conferred on the Natural Resources Commission and the Department of Natural Resources by Part 487 and Part 491 of 1994 PA 451, MCL 324.48701 to 324.48740, it is ordered on January 9, 2020, the following section(s) of the Fisheries Order shall read effective April 1, 2020, as follows:

The following regulations are established for trout, salmon, whitefish, Cisco, Grayling, and Smelt:

### LAKE TROUT MANAGEMENT UNITS – Great Lakes

#### Lake Michigan

MM-1 is bounded on the southeast and south by the Michigan-Wisconsin boundary in Green Bay and on the east by a north-south line beginning near Fairport in Delta County at Longitude 086°40'W and extending south to the Wisconsin-Michigan border.

MM-2 is bounded on the west by MM-1, on the east by a north-south line beginning about 4 miles west of Seul Choix Point in Schoolcraft County at Longitude 086°00'W and extending southward to Latitude 45°20'N, and on the south by an east-west line at Latitude 45°20'N that extends west from Longitude 086°00'W to the Michigan-Wisconsin boundary.

MM-3 is bounded on the west by a north-south line from the shore about 4 miles west of Seul Choix Point in Schoolcraft County at Longitude 86°00'W and extending southward to its intersection with Latitude 45°10' N, on the east by the Mackinac Bridge, and on the south by an east-west line from Longitude 086°00'W at Latitude 45°10' N and extending eastward to the shore about 4 miles north of Eastport in Antrim County.

MM-4 includes all waters of Grand Traverse Bay south of Latitude 45°10'N.

MM-5 is bounded on the west by the Michigan-Wisconsin boundary, on the north by an east-west line beginning on the Michigan-Wisconsin boundary at Latitude 45°20'N and extending eastward along said latitude to Longitude 086°00'W, then southward along said longitude to Latitude 45°10'N, then eastward along said latitude to its intersection with the west shore of Leelanau County, and on the south by an east-west line beginning near Arcadia in Manistee County at Latitude 44°30'N and extending west to the Michigan-Wisconsin boundary.

MM-6 is bounded on the west by the Michigan-Wisconsin boundary, on the north by MM-5, and on the south by an east-west line from Little Sable Point in Oceana County at Latitude 43°40'N and extending westward to the Michigan-Wisconsin boundary.

MM-7 is bounded on the west by the Michigan-Wisconsin boundary, on the north by MM-6, and on the south by an east-west line from the Michigan shore about 4 miles north of Holland in Ottawa County at Latitude 42°50'N and extending westward to the Michigan-Wisconsin boundary.

MM-8 is bounded on the west by the Michigan-Wisconsin boundary and the Michigan-Illinois boundary, on the north by MM-7, and on the south by the Michigan-Indiana boundary.

#### Lake Huron

MH-1 is bounded on the west by the Mackinac Bridge, on the north by an east west line from the village of Detour in Chippewa County at Latitude 46°00'N to the west shore of Drummond Island and an east-west line from the east shore of Drummond Island at Latitude 46°00'N to the international



boundary, and on the east and south by a line beginning where Longitude 083°30'W intersects the international boundary near Drummond Island in Chippewa County and extending southward along said longitude to Latitude 45°30'N, then extending westward along said latitude to Longitude 083°40'W, then extending southward along said longitude to shore about 3.5 miles southeast of Adams Point in Presque Isle County.

MH-2 is bounded on the north by MH-1, on the east by the international boundary, and on the south by an east-west line extending from the shore about one mile north of Black River in Alcona County at Latitude 44°50'N and extending eastward along said latitude to the International boundary.

MH-3 is bounded on the north by MH-2, on the east by the international boundary, and on the south by a line beginning on the shore on Au Sable Point in Iosco County at Latitude 44°20'N and extending eastward along said latitude to Longitude 083°10'W, then southward along said longitude to Latitude 44°10'N, then eastward along said latitude to the international boundary.

MH-4 is bounded on the north by MH-3 and on the east by a north-south line beginning on the shore about 2.6 miles southeast of Point aux Barques Lighthouse in Huron County at Latitude 44°00'N and extending eastward along said latitude to Longitude 082°40'W, then northward along said longitude to the southern boundary with MH-3 at Latitude 44°10'N.

MH-5 is bounded on the west by MH-4, on the north MH-3, on the east by the international boundary, and on the south by an east-west line beginning on the shore in the village of Forester in Sanilac County at Latitude 43°30'N and extending eastward along said latitude to the international boundary.

MH-6 is bounded on the north by MH-5, on the east by the international boundary, and on the south by the Blue Water Bridge in St. Clair County at Latitude 43°00'N.

#### Lake Superior

MI-1 is bounded on the west by the Michigan-Minnesota boundary, on the north by the international boundary, and on the south by a line beginning on the Minnesota boundary at Latitude 47°40'N extending eastward along said latitude to Longitude 088°30'W then northward along said longitude to Latitude 47°50'N then eastward along said latitude to Longitude 088°00'W then northward along said longitude to Latitude 48°00'N then eastward along said latitude to the international boundary.

MI-2 is bounded on the west by the Michigan-Minnesota and the Michigan-Wisconsin boundaries, on the north by MI-1, and on the east by a north-south line extending from the shore about 2.6 miles southwest of Fourteen Mile Point in Ontonagon County northward at Longitude 089°10'W to the southern border of MI-1 at Latitude 47°40'N.

MI-3 is bounded on the west by MI-2, on the north by MI-1, and on the east by a line extending northward from the shore about 1.4 miles east of Copper Harbor in Keweenaw County at Longitude 087°50'W to Latitude 47°30'N then eastward along said latitude to Longitude 087°40'W then northward along said longitude to the international border.

MI-4 is bounded on the west by MI-3, on the north by the international boundary, and on the southeast and east by a line beginning on the shore at Pine River Point in Marquette County at Longitude 087°50'W and extending northward along said longitude to Latitude 47°00'N then eastward along said latitude to Longitude 087°30'W then northward along said longitude to Latitude 47°10'N then eastward along said latitude to Longitude 087°20'W then northward along said longitude to Latitude 47°20'N then eastward along said latitude to Longitude 087°00'W then northward to the international boundary.

MI-5 is bounded on the west and north by MI-4 and on the east by a north-south line beginning on Laughing Fish Point in Alger County at Longitude 087°00'W and extending northward to Latitude 47°20'N.

MI-6 is bounded on the west by MI-4 and MI-5, on the north by the international boundary, and on the east by a north-south line beginning on Au Sable Point in Alger County at Longitude 086°10'W and extending northward to the international boundary.

MI-7 is bounded on the west by MI-6, on the north by the international boundary, and on the east by a north-south line beginning about four miles east of Crisp Point in Luce County at Longitude 085°20'W and extending northward to the international boundary

MI-8 is bounded on the west by MI-7, on the north and east by the international boundary with the easternmost border formed by a line from Brush Point in Chippewa County to Point aux Pins Ontario in the upper St. Marys River.

### **Lake Trout Refuges – Great Lakes**

The following areas are established as refuge areas for Lake Trout rehabilitation and shall be closed to the taking, keeping, and sport fishing for Lake Trout.

1) Lake Michigan (North part)

All waters enclosed within an area bounded by a line commencing at a point (45°30' north latitude, 85°15' west longitude) 7¼ miles due west of the northwest corner of Section 30, T36N, R6W, (Emmet County, Michigan) on the Lake Michigan shoreline; then proceeding due west for 12 miles (to 45°30' north latitude, 85°30' west longitude); then proceeding due north for 6 miles (to 45°35' north latitude, 85°30' west longitude); then proceeding due west for 8 miles (to 45°35' north latitude, 85°40' west longitude); then proceeding due north for 11¼ miles (to 45°45' north latitude, 85°40' west longitude); then proceeding due west 16 miles (to 45°45' north latitude, 86°00' west longitude); then proceeding due south for 40 miles (to 45°10' north latitude, 86°00' west longitude); then proceeding due east for 8½ miles to (45°10' north latitude, 85°50' west longitude); then proceeding due north for 6 miles (to 45°15' north latitude, 85°50' west longitude); then proceeding due east for 7½ miles (to 45°15' north latitude, 85°40' west longitude); then proceeding due north for 6 miles (to 45°20' north latitude, 85°40' west longitude); then proceeding due east 16½ miles (to 45°20' north latitude, 85°20' west longitude) then proceeding due north 6 miles (to 45°25' north latitude, 85°20' west longitude); then, proceeding due east 4 miles (to 45°25' north latitude, 85°15' west longitude); then proceeding northerly to the point of beginning (45°30' north latitude, 85°15' west longitude).

2) Lake Michigan (Mid Lake)

All waters enclosed within an area bounded by a line commencing at a point 15 miles (43°40' north latitude, 86°50' west longitude) due west of the half (1/2) section line of Section 25, T15N, R19W, on the Lake Michigan shoreline (Oceana County); then proceeding 14.5 miles due west to the Michigan/Wisconsin boundary; then proceeding southerly along the boundary line to a point (43°03.5' north latitude, 87°05' west longitude) due west of the mouth of the Grand River (T8N, R16W, S30, Ottawa County) on the Lake Michigan shore; then proceeding due east 14 miles (to 43°03.5' north latitude, 86°50' west longitude); and then northerly to the point of beginning (43°40' north latitude, 86°50' west longitude).

3) Lake Huron (North end)

All waters enclosed within an area bounded by a line commencing at the southwest corner of Section 17, T41N, R5E (Chippewa County) on the Lake Huron shoreline for the point of beginning and proceeding due south 15 miles (to 45°45' North latitude, 83°50' west longitude), then proceeding due east 8 miles (to 45°45' North latitude, 83°40' west longitude); then proceeding 6 miles due south (to 45°40' North latitude, 83°40' west longitude); then proceeding due east to the Michigan-Ontario border; then proceeding northwesterly and then northeasterly along said border to a point due south of the southeast corner of Section 1, T41N, R7E (Chippewa County), on the said shoreline, and westerly along said shoreline to the point of beginning.

## 4) Lake Huron (6 Fathom Bank)

All waters enclosed within an area bounded by a line commencing at a point in Lake Huron at 45°00' north latitude, 82°45' E west longitude; then proceeding due east to the international boundary line between the U.S. and Canada; thence in a southeasterly direction to 44°40' north latitude; thence due west to 44°40' north latitude, 82°45' E west longitude; then proceeding due north to the point of beginning.

### **SECTION I. Seasons--General**

Except as otherwise noted in the following sections of this Order, the fishing and possession seasons on non-designated trout streams and all other inland waters, the Saginaw River, and the Great Lakes and Great Lakes Connecting Waters are open for the entire year for all trout, salmon, whitefish, Cisco (also referred to as Lake Herring), and smelt.

Exceptions to the general possession season:

- 1) The possession season for Lake Trout and Splake shall be January 1 - September 30 in MM-1 through MM-5 in Lake Michigan.
- 2) The possession season for Lake Trout and Splake shall be open for the entire year in MM-6 through MM-8 in Lake Michigan.
- 3) The possession season for Lake Trout and Splake shall be January 1 - September 30 in MH-1 and MH-2 in Lake Huron.
- 4) The possession season for Lake Trout and Splake shall be open for the entire year in MH-3 through MH-6 in Lake Huron.

### **SECTION II. Lake Whitefish, Round Whitefish, and Cisco**

Size and daily possession limits for Lake Whitefish, Round Whitefish (also referred to as Menominee), and Cisco

On all waters, there is no minimum size limit for Lake Whitefish (*Coregonus clupeaformis*), Round Whitefish (*Prosopium cylindraceum*) or Cisco (*Coregonus artedii*). On all Great Lakes, Connecting Waters, and Type F lakes the daily possession limit shall be ten (10) fish in any combination, except the daily possession limit shall be five (5) fish in any combination on inland waters. See FO-205 for inland waters that differ from the five (5) fish daily possession limit.

### **SECTION III. Rainbow Smelt**

Size, daily possession limits, season, and gear for Rainbow Smelt

On all waters, there is no minimum size limit for Rainbow Smelt (*Osmerus mordax*). The daily harvest/possession limit for smelt on all waters of the state shall be 2 gallons. The harvest season is open all year for hook-and-line. See FO-219 for spear, bow and arrow, or crossbow seasons and FO-229 for netting seasons.

### **SECTION IV. Arctic Grayling**

Size, daily possession limits, season, and gear for Arctic Grayling

A person shall not at any time take, attempt to take, or possess any Arctic Grayling (*Thymallus tricolor*) from any waters over which this state has jurisdiction.

## **SECTION V. Trout and Salmon—Great Lakes and Great Lakes Connecting Waters**

### **Size limits**

Minimum size limit shall be 10 inches for all species of trout and salmon, except as follows:

1) Brook Trout

Lake Superior

- a) MI-1 through MI-8: the minimum size limit for Brook Trout shall be 20 inches.

2) Lake Trout

Lake Michigan

- a) MM-1 through MM-8: the minimum size limit shall be 15 inches.

Lake Huron

- a) MH-1 through MH-6: The minimum size limit shall be 15 inches.

Lake Superior

- a) MI-1 through MI-8: The minimum size limit shall be 15 inches, except that the daily possession limit shall not include more than one (1) Lake Trout 34 inches or greater.

3) Splake

Lake Michigan

- a) MM-1 through MM-8: the minimum size limit shall be 15 inches.

Lake Huron

- a) MH-1 through MH-6: The minimum size limit shall be 15 inches.

Lake Superior

- a) MI-1 through MI-8: The minimum size limit shall be 15 inches.

### **Daily possession limit**

Five (5) trout and salmon in any combination, except that the daily possession limit shall not include more than three (3) Brook Trout, Brown Trout, Rainbow Trout\*, Lake Trout, Splake, or Atlantic Salmon. Additional exceptions are:

1) Lake Superior

- a) The daily possession limit may include up to one (1) Brook Trout, except that the daily possession limit shall be zero (0) for Brook Trout within 4.5 miles of Isle Royale (waters of the Isle Royale National Park).
- b) The daily possession limit may include up to five (5) Lake Trout in MI-4, MI-5, MI-6, MI-7, and MI-8.

2) St. Marys River

- a) The daily possession limit may include up to ten (10) Pink Salmon from the last Saturday in April - September 30.

3) Lake Michigan

- a) The daily possession limit may include up to two (2) Lake Trout in management units MM-1, MM-2, MM-3, and MM-5.
- b) The daily possession limit may include up to one (1) Lake Trout in management unit MM-4.

4) Lake Huron

- a) The daily possession limit may include up to two (2) Lake Trout and Splake, in any combination in management unit MH-1.

\*Note: For the purpose of this Order Rainbow Trout refers to both Rainbow Trout and Steelhead.

**SECTION VI: Trout and Salmon in Inland Lakes**

On those inland lakes designated below as Types A, B, C, D and E, the minimum size limits for Chinook Salmon, Coho Salmon, Pink Salmon, and Atlantic Salmon shall be as follows:

<u>Species</u>	<u>Minimum size limit</u>
Chinook Salmon	10 inches
Coho Salmon	10 inches
Pink Salmon	10 inches
Atlantic Salmon	15 inches

Notwithstanding any other Order of the Department, for any inland lake not classified below the fishing and possession seasons are open for the entire year to the taking of trout, the minimum size limit shall be 8 inches except, the daily possession limit shall be five (5) trout\*\*, and all types of natural bait and artificial lures may be used.

\*\*Note: The daily possession limit shall not include more than three (3) trout 15 inches or greater.

**Type A Lakes**

- Fishing season: last Saturday in April - October 31.
- Possession season: last Saturday in April - October 31.
- Tackle: natural baits except minnows (dead or alive) and artificial lures may be used.
- Daily Possession Limit: five (5) trout, except that the daily possession limit shall not include more than three (3) trout 15 inches or greater.
- Size limits:

<u>Species</u>	<u>Minimum size limit</u>
Brook Trout	10 inches
Brown Trout	12 inches
Rainbow Trout	12 inches
Splake	12 inches
Lake Trout	15 inches

Following is a listing of Type A lakes. Type A lakes are managed strictly for trout and, as such, are designated trout lakes.

Type A Designated Trout Lakes	
County	Lake Name
Alger	Addis Lakes (T46N, R20W, S33)
Alger	Bette's Pond
Alger	Brian's Pond
Alger	Cox Pond (T46N, R19W, S13)
Alger	Grand Marais Lake
Alger	Hike Lake
Alger	Irwin Lake
Alger	Rock Lake
Alger	Rock River Pond
Alger	Sitka Lake (T48N, R13W, S9)
Alger	Sullivan Lake (T49N, R15W, S21)
Alger	Trueman Lake
Alger	West John's Lake (T48N, R13W, S26)
Chippewa	Highbanks Lake

Type A Designated Trout Lakes	
County	Lake Name
Chippewa	Naomikong Lake
Chippewa	Naomikong Pond
Crawford	Bright Lake
Crawford	Kneff Lake
Crawford	Shupac Lake
Delta	Bear Lake
Delta	Carr Lake (T43N, R18W, S36)
Delta	Carr Ponds (T43N, R18W, S26)
Delta	Kilpecker Pond (T43N, R18W, S11)
Delta	Norway Lake
Delta	Wintergreen Lake (T43N, R18W, S36)
Delta	Zigmaul Pond
Gogebic	Castle Lake
Gogebic	Cornelia Lake
Gogebic	Mishike Lake
Houghton	Penegor Lake
Iron	Deadman's Lake (T41N, R32W, S5 & 8)
Iron	Fortune Pond (T43N, R33W, S25)
Iron	Killdeer Lake
Iron	Madelyn Lake
Iron	Skyline Lake
Iron	Spree Lake
Keweenaw	No Name Pond (T57N, R31W, S8)
Luce	Bennett Springs Lake
Luce	Brockies Pond (T46N, R11W, S1)
Luce	Bullhead Lake (T49N, R11W, S34)
Luce	Dairy Lake
Luce	Holland Lake
Luce	Jack Lake
Luce	Little Whorl Lake
Luce	Pratt Lake
Luce	Silver Creek Pond
Luce	Syphon Lake
Luce	Trout Lake
Luce	Ward Lake
Luce	Wolverine Lake
Luce	Youngs Lake
Mackinac	Castle Rock Pond
Mackinac	Millecoquins Pond
Marquette	Cranberry Lake (T45N, R30W, S10)
Marquette	Just Lake
Marquette	Island Lake (T45N, R30W, S14)
Marquette	Moccasin Lake
Marquette	Section 13 Lake
Marquette	Silver Lake (T46N, R24W, S32)
Marquette	Slough Lake
Marquette	Swanzy Lake
Oscoda	Crater Lake

Type A Designated Trout Lakes	
County	Lake Name
Schoolcraft	Kings Pond
Schoolcraft	Lost Lake
Schoolcraft	Spring Pond

**Type B Lakes**

- Fishing season: open for the entire year.
- Possession season: open for the entire year.
- Tackle: all types of natural bait and artificial lures may be used.
- Daily Possession Limit: five (5) trout, except that the daily possession limit shall not include more than three (3) trout 15 inches or greater.
- Size limits:

<u>Species</u>	<u>Minimum size limit</u>
Brook Trout	10 inches
Brown Trout	12 inches
Rainbow Trout	12 inches
Splake	12 inches
Lake Trout	15 inches

Following is a listing of Type B lakes.

Type B Trout Lakes	
County	Lake Name
Alcona	Reid Lake
Alcona	South Hoist Lake
Alger	Ackerman Lake
Alger	Cheryl's Pond (T44N, R19W, S25)
Alger	Kay's Pond
Alger	Mirror Lake
Alger	North (Upper) Shoe Lake (T48N, R17W, S36)
Alger	Sawaski Pond (T44N, R19W, S14)
Antrim	Green Lake
Baraga	Roland Lake
Barry	Deep Lake
Cass	Birch Lake
Cass	Hemlock Lake
Charlevoix	Louise Lake
Cheboygan	Silver Lake
Cheboygan	Twin Lake #1
Cheboygan	Weber Lake
Chippewa	Dukes Lake
Emmet, Charlevoix	Walloon Lake
Gogebic	Beatons Lake
Gogebic	Finger Lake
Gogebic	Imp Lake
Gogebic	Little Duck Lake
Gogebic	Moon Lake
Grand Traverse	Duck Lake

Type B Trout Lakes	
County	Lake Name
Grand Traverse	Green Lake
Houghton	Emily Lake
Houghton	Lake on Three
Iron	Chicagon Lake
Iron	Ellen Lake
Iron	Golden Lake
Iron	Lake Ottawa
Kalkaska	Bear Lake
Kalkaska	Big Blue Lake
Kalkaska	North Blue Lake
Luce	Camp 8 Lake
Luce	Pretty lake
Luce	Tank Lake
Marquette	Bass Lake (T45N, R26W, S29)
Marquette	Brocky Lake
Marquette	Cedar Lake (T47N, R27W, S11)
Marquette	Forestville Basin (T48N, R25W, S8)
Marquette	Little Brocky Lake
Marquette	Little Shag Lake
Marquette	Perch Lake (T46N, R29W, S8)
Marquette	Silver Lake Basin
Marquette	Twin Lake (T45N, R30W, S23)
Montmorency	Avalon Lake
Montmorency	Clear Lake
Montmorency	Lake Fifteen
Montmorency	McCormick Lake
Ogemaw	Lake George (T21N, R2E, S18)
Ontonagon	Courtney Lake
Ontonagon	Mirror Lake
Oscoda	Loon Lake
Otsego	Big Chub Lake
Otsego	Bridge Lake
Otsego	Heart Lake
Otsego	Pickarel Lake
Presque Isle	Bear Den Lake (T33N, R2E, S32)
Schoolcraft	Banana Lake
Schoolcraft	Bear Lake (Nineteen Lake, T44N, R18W, S27)



**Type C Lakes**

- Fishing season: open for the entire year.
- Possession season: open for the entire year.
- Tackle: all types of natural bait and artificial lures may be used.
- Daily Possession Limit: five (5) trout, except that the daily possession limit shall not include more than three (3) trout 15 inches or greater.
- Size limits:

<u>Species</u>	<u>Minimum size limit</u>
Brook Trout	8 inches
Brown Trout	8 inches
Rainbow Trout	8 inches
Splake	8 inches
Lake Trout	8 inches

Following is a listing of Type C lakes.

Type C Trout Lakes	
County	Lake Name
Antrim	Bellaire Pond
Berrien	Singer Lake
Branch	Cary Lake
Cass	Harwood Lake
Grand Traverse	Sand Lake #1
Hillsdale	Bear Lake
Hillsdale	Bird Lake
Jackson	Farwell Lake (T4S, R2W, S25/36)
Jackson	Swains Lake
Kalamazoo	Little Paw Paw Lake (T3S, R12W, S31)
Kalamazoo	Ruppert Lake
Kalkaska	Big Guernsey Lake
Kalkaska	Big Twin Lake
Kalkaska	Starvation Lake
Kent	Lime Lake
Leelanau	Lime Lake
Lenawee	Allens Lake (T5S, R2E, S10)
Lenawee	Deep Lake
Montcalm	Marl Lake
Montcalm	Nevins Lake
Muskegon	Half Moon Lake
Newaygo	Condon Lake
Oakland	Maceday Lake (T3N, R9E, S7)
Ontonagon	Trout Creek Pond (T47N, R38W, S14)
Osceola	Center Lake
Van Buren	Shafer Lake

**Type D Lakes**

- Fishing season: last Saturday in April - October 31.
- Possession season: last Saturday in April - October 31.
- Tackle: only artificial lures may be used. It shall be unlawful to use or possess live bait, dead or preserved bait, organic or processed food on any of the waters or on shore.
- Daily Possession Limit: one (1) trout.
- Size limits:

<u>Species</u>	<u>Minimum size limit</u>
Brook Trout	15 inches
Brown Trout	15 inches
Rainbow Trout	15 inches
Splake	15 inches
Lake Trout	15 inches

Following is a listing of Type D lakes. Type D lakes are managed for trout and, as such, are designated trout lakes.

Type D Designated Trout Lakes	
County	Lake Name
Baraga	Lake Alice
Cheboygan	Hemlock Lake (T3N, R1W, S34, 35)
Gogebic	Redboat Lake
Houghton	Clear Lake
Houghton	Perrault Lake
Iron	Forest Lake
Iron	Timber Lake
Keweenaw	Lost Lake
Luce	Deer Lake
Luce	Moon Lake
Luce	Sid Lake
Marquette	South Kidney Lake (T45N, R26W, S28)
Marquette	Pauls Lake, North
Marquette	Pauls Lake, South
Marquette	Rockingchair Lake, N., (T49N, R28W, S10)
Marquette	Rockingchair Lake, S., (T49N, R28W, S10)
Marquette	Strawberry Lake
Otsego	Ford Lake (T32N, R1W, S8)
Otsego	Lost Lake
Otsego	North Twin Lake
Otsego	Section Four Lake (T32N, R1W, S4)
Otsego	South Twin Lake
Otsego	West Lost Lake (T32N, R1W, S3)
Schoolcraft	Ned's Lake
Schoolcraft	Twilight Lake

**Type E Lakes**

- Fishing season: open for the entire year.
- Possession season: open for the entire year.
- Tackle: all types of natural bait and artificial lures may be used.
- Daily Possession Limit: three (3) trout.
- Size limits:

<u>Species</u>	<u>Minimum size limit</u>
Brook Trout	15 inches
Brown Trout	15 inches
Rainbow Trout	15 inches
Splake	15 inches
Lake Trout	15 inches

Following is a listing of Type E lakes.

<u>Type E Trout Lakes</u>	
<u>County</u>	<u>Lake Name</u>
Alger	Grand Sable Lake
Antrim	Torch Lake
Antrim, Grand Traverse	Elk Lake
Barry, Kalamazoo	Gull Lake
Benzie	Crystal Lake
Charlevoix	Lake Charlevoix
Cheboygan	Tower Pond (from dam upstream to M-68)
Leelanau	North Lake Leelanau
Leelanau	Big Glen Lake
Luce	Belle Lake 1
Luce	Peanut Lake
Marquette	Lake Arfelin
Marquette	Sporely Lake
Roscommon	Higgins Lake

**Type F Lakes (Drowned River-Mouth Lakes)**

NOTE:

- 1) The following regulations shall apply in each drowned river-mouth lake identified below from the upstream limit of the lake to its mouth at Lake Michigan.
- Fishing season: open for the entire year.
  - Possession season:
    - 1) For all species of trout and salmon, open for the entire year.
  - Tackle: all types of natural baits and artificial lures may be used.
  - Daily Possession Limit: five (5) trout and salmon in any combination, except:
    - 1) Excluding Chinook Salmon and Coho Salmon, the daily possession limit shall not include more than three (3) of any one species of trout or salmon.
    - 2) The daily possession limit may include up to five (5) Chinook Salmon or Coho Salmon in any combination.
  - Size limits: minimum size limit: 10 inches for all species of trout and salmon.

Following is a listing of Type F lakes.

Type F Trout Lakes		
County	Lake Name	Upstream Limit
Allegan	Kalamazoo Lake/Silver Lake	US 31
Benzie	Betsie Lake	M-22
Manistee	Arcadia Lake	M-22
Manistee	Manistee Lake	Railroad Bridge below M-55 (T21N, 16W, S6)
Manistee	Portage Lake	
Mason	Pere Marquette Lake	Old 31 Highway
Muskegon	Duck Lake	Nestrom Road
Muskegon	Mona Lake	US 31
Muskegon	Muskegon Lake	M-120
Muskegon	White Lake	Business Route US 31
Oceana	Pentwater Lake	Long Bridge Road (B15)
Oceana	Silver Lake	
Oceana	Stony Lake	Inlet of Stony Creek (Scenic Drive, T13N, R18W, S5)
Ottawa	Lake Macatawa	River Avenue
Ottawa	Pigeon Lake	Lakeshore Drive

## **SECTION VII. Trout and Salmon on Inland Streams**

### **NOTES:**

- 1) Fisheries Order 210 provides a listing of all designated trout streams in Michigan. Some of the streams listed in FO-210 appear in FO-200 (see section VII) as Types 2, 3, 4 or gear restricted streams. Type 1 streams are not listed in FO-200. If a stream name appears in FO-210, but not in FO-200 (section VII), then Type 1 stream regulations apply to that stream.
- 2) Notwithstanding any other Order of the Department, for any inland stream not classified below the fishing and possession seasons are open for the entire year to the taking of trout and salmon, the minimum size limit shall be 8 inches (except 7 inches for Brook Trout), the daily possession limit shall be five (5) trout and salmon in any combination\*\*\*, and all types of natural bait and artificial lures may be used.
- 3) On all waters open to possession, the daily possession limit may include up to five (5) Chinook Salmon or Coho Salmon, in any combination.
- 4) "Artificial flies" means any commonly accepted single hooked wet and dry flies, streamers, and nymphs without spinner, spoon, scoop, lip or any other fishing lure or bait attached. The fly or leader may be weighted but no weight shall be attached to the fly or to the terminal tackle in a manner that allows the weight to be suspended from or below the hook.
- 5) "Chumming" means luring or attracting or attempting to lure or attract fish by scattering organic material into the water.
- 6) Chumming with organic materials shall be prohibited on all Type 1, 2, 3, and 4 streams.

- 7) On stream Types 1 through 4, size limits for Brook Trout and Brown Trout vary by stream type and may be found in the regulation section for each stream type. For all other species of trout and salmon, size limits shall be as follows:

<u>Species</u>	<u>Minimum size limit</u>
Chinook Salmon	10 inches
Coho Salmon	10 inches
Pink Salmon	10 inches
Atlantic Salmon	10 inches
Lake Trout	10 inches
Rainbow Trout	10 Inches
Splake	10 Inches

\*\*\*NOTE: The daily possession limit shall not include more than three (3) trout 15 inches or greater.

### **Type 1 Streams**

- Fishing season: last Saturday in April - September 30.
- Possession season: last Saturday in April - September 30.
- Tackle: artificial lures and all types of natural bait may be used.
- Chumming with organic materials is prohibited on all Type 1 streams.

Daily Possession Limit: five (5) trout and salmon in any combination, except that the daily possession limit shall not include more than three (3) trout 15 inches or greater.

Additional exception:

1) Platte River

- a) The daily possession limit shall be one (1) Rainbow Trout from the Upper (Hatchery) Platte River Weir downstream to Lake Michigan.

- Size limits:

<u>Species</u>	<u>Minimum size limit</u>
Brook Trout	7 inches
Brown Trout	8 inches

### **Type 2 Streams**

- Fishing season: last Saturday in April - September 30.
- Possession season: last Saturday in April - September 30.
- Tackle: artificial lures and all types of natural bait may be used.
- Chumming with organic materials is prohibited on all Type 2 streams.

Daily Possession Limit: five (5) trout and salmon in any combination, except that the daily possession limit shall not include more than three (3) trout 15 inches or greater.

- Size limits:

<u>Species</u>	<u>Minimum size limit</u>
Brook Trout	10 inches
Brown Trout	12 inches

Following is a listing of Type 2 streams.

Type 2 Streams			
County	Stream Name	Upstream Boundary	Downstream Boundary
Alcona, Oscoda	Au Sable River, Mainstream	Evans Road (McKinley Bridge)	4001 Bridge
Allegan	Silver Creek	M-89 Bridge (T1N, R11W, S26)	Confluence with Kalamazoo River
Antrim, Crawford, Otsego	Manistee River		CR 612
Baraga, Houghton	Sturgeon River	US-41	Prickett Dam
Barry	Coldwater River	M-43 Bridge (T4N, R8W, S16)	Freeport Road Bridge (T5N, R9W, S36)
Barry	Unnamed tributary on North Bank Coldwater River (T4N, R7W, S18)		
Cass	Dowagiac Creek	McKenzie Rd. (T5S, R14W, S31)	M-62
Cheboygan, Otsego	Pigeon River	Old Vanderbilt Rd.	Elk Hill Campground Horse Trail
Crawford	Au Sable River, Mainstream	Business Loop 75 (James St.)	Burton's Landing
Gogebic	Black River	US-2	Rainbow Falls
Lake	Pine River	Elm Flats PAS (T20N, R12W, S2)	Confluence with Tippy Dam Backwaters
Marquette	Carp River	Deer Lake Dam (T48N, R27W, S27)	Morgan Creek
Ontonagon	Middle Branch Ontonagon River		Agate Falls
St. Joseph	Curtis Creek and all tributaries		

### **Type 3 Streams**

- Fishing season: open for the entire year.
- Possession season: open for the entire year.
- Tackle: artificial lures and all types of natural bait may be used.
- Chumming with organic materials is prohibited on all Type 3 streams.

Daily Possession Limit: five (5) trout and salmon in any combination, except that the daily possession limit shall not include more than three (3) trout 15 inches or greater.

- Size limits:

Species	Minimum size limit
Brook Trout	15 inches
Brown Trout	15 inches

Following is a listing of Type 3 streams.

Type 3 Streams			
County	Stream Name	Upstream Boundary	Downstream Boundary
Alcona	Pine River	F-41	Lake Huron
Allegan	Black River	Confluence of North & South Branch Black River	Lake Michigan
Allegan	North Branch Black River	111 <sup>th</sup> Avenue (T1N, R16W, S3)	Confluence with mainstream
Allegan	Kalamazoo River	Calkins Dam (T2N, R14W, S15)	US-31
Alpena	Thunder Bay River	Ninth Street Dam	Lake Huron
Antrim	Elk River	Power Dam below Elk Lake	Lake Michigan
Arenac	Rifle River	Sage Lake Road (T23N, R3E, S22)	Lake Huron
Baraga	Falls River	US-41	Lake Superior
Baraga	Sturgeon River	Prickett Dam	Lake Superior
Berrien	St. Joseph River	Indiana State Line	Lake Michigan
Cheboygan	Cheboygan River	Cheboygan Dam	Lake Huron
Emmet	Carp Lake River	Bridge (T39N, R4W, S32)	Lake Michigan
Gogebic	Big Carp River	A point 100 yards downstream from Bathtub Falls (T50N, R45W, S1, NE¼, NW¼)	Lake Superior
Gogebic	Black River	Rainbow Falls (T49N, R46W, S10)	Lake Superior
Gogebic	Little Carp River	Traders Falls (T50N, R45W, S2)	Lake Superior
Gogebic	Maple Creek	Bridge (T49N, R46W, S18)	Lake Superior
Gogebic	Ohman Creek	CR 505	Lake Superior
Gogebic	Presque Isle River	Manabezho Falls	Lake Superior
Houghton	Big Traverse River	Gay-Lake Linden Road	
Houghton	Otter River	Confluence of North Branch & West Branch Otter River	Sturgeon River
Houghton	Pilgrim River	US-41	Lake Superior
Houghton	Salmon-Trout River	Redridge Dam	Lake Superior
Huron	Bird Creek		
Huron	Pigeon River		
Huron	Pinnebog River		
Iosco	Au Sable River	Foote Dam	Lake Huron
Iosco	East Branch Au Gres River (Whitney Drain)	M-55 (T22N, R6E, S21)	Saginaw Bay
Iosco	Van Etten Creek	Van Etten Lake	Lake Huron
Iosco	Tawas River		
Isabella, Midland	Chippewa River	Outlet of Lake Isabella, (T15N, R6W, S35)	Confluence with the Tittabawassee River (T14N, R2E, S21)
Leelanau	Crystal River	Fisher Dam	Lake Michigan
Leelanau	Leland River	None	Lake Michigan
Manistee	Bear Creek	CR 600	Confluence of Manistee River

Type 3 Streams			
County	Stream Name	Upstream Boundary	Downstream Boundary
Manistee	Manistee River	Tippy Dam	Railroad Bridge below M-55 (T21N, R16W, S6)
Marquette	Carp River	Confluence of Morgan Creek (T47N, R25W, S4)	Lake Superior
Marquette	Chocolay River	Confluence of Big Creek (T47N, R24W, S9)	Lake Superior
Mason	Lincoln River	Confluence of North & South Branches of Lincoln River (T19N, R17W, S32)	Lake Michigan
Mason	Pere Marquette River	Reek Road (Indian Bridge)	Old US-31
Mason	Sable River	Hamlin Lake Dam	Lake Michigan
Midland, Saginaw	Tittabawassee River	Sanford Dam	Confluence with Saginaw River
Muskegon	Cedar Creek	River Road	Confluence of Muskegon River
Muskegon	Muskegon River	Croton Dam	M-120
Ontonagon	Big Iron River	Koshak Road Bridge (T49N, R43W, S2)	Lake Superior
Ontonagon	West Branch Big Iron River	Burnt Dam Bridge (T50N, R44W, S36)	Confluence with Big Iron River
Ontonagon	Little Iron River	Nonesuch Falls (T50N, R43N, S1)	
Ontonagon	East Branch Ontonagon River	M-28	
Ontonagon	Firesteel (including East & West Branches)	M-26	
Ontonagon	Middle Branch Ontonagon River	Agate Falls	
Ontonagon	Misery River	Bridge (T53N, R37W, S15)	
Ontonagon	Ontonagon River		
Ontonagon	West Branch Ontonagon River	Confluence with Victoria Hydro Station Tail Race (T50N, R39W, S29, SE1/4 of SW1/4)	
Ontonagon	East Sleeping River	Railroad trestle (T53N, R38W, S25)	Lake Superior
Presque Isle	Swan River	US-23 Bridge	Lake Huron
Presque Isle	Trout River	Dam (T35N, R5E, S17)	Lake Huron
Saginaw	Saginaw River		Saginaw Bay
St. Clair	Black River	Private Dam in Port Huron State Game Area	Confluence with St. Clair River
Van Buren	South Branch Black River	Hamilton Street Bridge (T2S, R16W, S1)	Confluence with Mainstream (T1S, R17W, S2)



**Type 4 Streams**

- Fishing season: open for the entire year.
  - Possession season:
    - 1) For Brook Trout, Brown Trout and Atlantic Salmon: the last Saturday in April - September 30.
    - 2) For all other species of trout and salmon, open for the entire year.
  - Tackle: artificial lures and all types of natural bait may be used.
  - Chumming with organic materials is prohibited on all Type 4 streams.
- Daily Possession Limit: five (5) trout and salmon in any combination, except that the daily possession limit shall not include more than three (3) trout 15 inches or greater.
- Additional exceptions are:
- 1) Little Manistee River
    - a) The daily possession limit shall be one (1) Rainbow Trout from 300 feet downstream of the Little Manistee Weir down to Manistee Lake.
  - 2) Platte River
    - a) The daily possession limit shall be one (1) Rainbow Trout from the Upper (Hatchery) Platte River Weir downstream to Lake Michigan.
- Size limits:

Species	Minimum size limit
Brook Trout	7 inches
Brown Trout	10 inches

Following is a listing of Type 4 streams.

Type 4 Streams			
County	Stream Name	Upstream Boundary	Downstream Boundary
Alcona, Iosco	Au Sable River, Mainstream	Alcona Dam	South Branch River
Alcona	Black River	Confluence with North Branch Black River	Lake Huron
Alger	Anna River	Railroad Bridge (T46N, R19W, S14)	Lake Superior
Alger	Au Train River	Powerhouse below M-94	Lake Superior
Alger	Hurricane River		Lake Superior
Alger	Laughing Whitefish River	Forks (T47N, R22W, S22)	Lake Superior
Alger	Miner's River	Miner's Falls	
Alger	Rock River	Railroad Bridge (T47N, R21W, S22)	Lake Superior
Alger	Sable Creek		
Alger	Sucker River	Old Grand Marais/Seney Road Bridge	
Allegan	Middle Branch Black River	Confluence of Spring Brook Creek (T1N, R15W, S22)	Confluence with Black River, Mainstream
Allegan	Gun River, Mainstream	122nd Avenue (T2N, R11W, S12)	US-131 bridge (T1N, R11W, S18)
Allegan	Pine Creek Tributary	101 <sup>st</sup> Avenue	Confluence with Pine Creek

Type 4 Streams			
County	Stream Name	Upstream Boundary	Downstream Boundary
Allegan	Swan Creek	109 <sup>th</sup> Avenue (T1N, R14W, S7)	Confluence with Kalamazoo River (T2N, R14W, S9)
Allegan	Rabbit River, Mainstream	US-131 Bridge (T4N, R11W, S31)	Confluence with Kalamazoo River (T3N, R15W, S16)
Alpena	Devils River	US-23 Bridge	Lake Huron
Alpena	Long Lake Creek	None	Lake Huron
Antrim	Elk River Bypass	Up to the Bypass Dam	Lake Michigan
Antrim	Grass River (including Clam Lake and Clam River)	Lake Bellaire	Torch Lake
Antrim	Intermediate River	Intermediate Dam	Lake Bellaire
Antrim, Charlevoix	Jordan River	Graves Crossing	Lake Charlevoix
Baraga	Huron River	Big Erics Bridge (T52N, R30W, S35)	
Baraga	Ravine River	Sicotte Road	
Baraga	Silver River	Silver Falls	
Baraga	Slate River	Slate Falls	
Barry	Bassett Creek	Baker Lake	Confluence with Thornapple River
Barry	Cedar Creek	Sources	M-37 (T2N, R8W, S9)
Barry, Kent	Coldwater River	Freeport Road	Confluence with Thornapple River
Barry	Turner Creek	(T3N, R10W, S23)	Confluence with Baker Creek (T3N, R10W, S9)
Benzie	Betsie River	Kurick Road	M-22
Benzie	Otter Creek	Otter Lake outlet (T27N, R14W, S13)	Lake Michigan
Benzie	Platte River	US-31 bridge at Veteran's Park	Lake Michigan
Berrien	Blue Creek		
Berrien	Dowagiac River	Niles Dam at Pucker Street (T7S, R17W, S13)	Confluence with St. Joseph River
Berrien	Galien River, Mainstream		Lake Michigan
Berrien	Galien River, South Branch		Confluence with the Galien River
Branch, St. Joseph	Prairie River, mainstream	Bowers Road (T8S, R7W, S4)	MacKale Road (T7S, R9W, S8)
Calhoun	Nottawa Creek	(T3S, R5W, S35)	Calhoun Co. line (T4S, R8W, S31)
Calhoun, Jackson	South Branch Rice Creek	Concord Road (Jackson Co.)	Confluence of Rice Creek and Kalamazoo River (T2S, R6W, S25)
Cass	Dowagiac Drain		

Type 4 Streams			
County	Stream Name	Upstream Boundary	Downstream Boundary
Cass	Dowagiac River, Mainstream	To source	Pucker Street (T7S, R17W, S13)
Charlevoix	Boyne River	P.H. Dam	Lake Charlevoix
Charlevoix, Emmet	Bear River	Walloon Lake	Lake Michigan
Cheboygan, Emmet	Maple River	Woodland Road	Mouth
Cheboygan	Mill Creek		Lake Huron
Cheboygan	Pigeon River	Pine Grove Campground Stairs	East Mullet Road
Cheboygan	Sturgeon River	Afton Road (Webb Road)	Mouth at Burt Lake
Chippewa	Albany Creek	Bridge below lamprey weir	Lake Huron
Chippewa, Mackinac	Carp River, mainstream		Lake Huron
Chippewa	Halfaday Creek	Lakeshore Drive	Lake Superior
Chippewa	Pendill's Creek	Second Dam (T47N, R4W, S28)	Lake Superior
Chippewa, Mackinac	Pine River	H-40 Bridge	Lake Huron
Crawford, Oscoda	Au Sable River, mainstream	McMasters Bridge Road (McMasters Bridge)	Rainbow Bend power line (T26N, R2E, S3)
Delta	Bark River	9 Road (Section line between T38N, R24W, S20, 29)	Lake Michigan
Delta	Big Fishdam River	CR 2222 Bridge (T41N, R18W, S9)	Lake Michigan
Delta	Days River	M-35 Bridge	Lake Michigan
Delta, Dickinson	Ford River	Northland Truck Trail (T43N, R27W, S35) Dickinson Co.	Lake Michigan
Delta	Rapid River	CR S-15 (T42N, R21W, S19)	Lake Michigan
Delta	Sturgeon River	CR 442 Bridge (T42N, R20W, S13)	Lake Michigan
Delta	Tacoosh River	29th Lane (CR G-24)	Lake Michigan
Delta	Whitefish River	38th Road (USFS 2236)	US-2 Bridge (T41N, R21W, S28)
Grand Traverse	Boardman River	Beitner Road	Lake Michigan
Houghton	Elm River	Road Bridge between (T53N, R36W, S3, S10)	
Houghton	Little Elm River	Agate Beach Road (T53N, R36W, S6)	
Houghton	South Branch Elm River	Bridge (T54N, R36W, S29, S32)	
Houghton	Graveraet River	Mouth of Deer Creek (T45N, R36W, S2)	
Houghton	Trap Rock River	Cemetery Road (T56N, R32W, S29)	

Type 4 Streams			
County	Stream Name	Upstream Boundary	Downstream Boundary
Ionia, Montcalm	Fish Creek	Sidney Road	Confluence with Maple River
Ionia, Montcalm	Prairie Creek	East Muskrat Road	Confluence with Grand River
Ionia	Sebewa Creek and all tributaries		
Kalamazoo	Augusta Creek	Little Gilkey Lake and Fair Lakes Outlets	Knappen Mills Dam
Kalamazoo	Portage Creek		Kilgore Road (T3S, R11W, S3)
Kalkaska, Wexford	Manistee River	Sunset Trail Road (CCC Bridge T26N, R6W, S26)	M-115
Kalkaska	Rapid River	Antrim (Rugg) Pond	Torch River
Kalkaska, Antrim	Torch River	Torch Lake	Lake Skegemog
Kent	Nash Creek		Confluence with Rogue River
Kent	Ball Creek		Confluence with Rogue River
Kent	Buck Creek		Confluence with Grand River
Kent	Rogue River		Confluence with Grand River
Keweenaw	Eagle River	Dam, Eagle River Village	
Keweenaw	Fanny Hooe River	Lake Fanny Hooe	
Keweenaw	Gratiot River	Bridge (T57N, R32W, S19, S20)	Lake Superior
Keweenaw	Silver Creek	Falls (T58N, R32W, S26)	Lake Superior
Keweenaw	Silver River	M-26	Lake Superior
Keweenaw	Tobacco River	Mouth of Black Brook Creek	
Lake, Manistee	Little Manistee River	Johnson Road (Johnson's Bridge)	Manistee Lake
Lake, Mason	Pere Marquette River	Upstream edge of the boat ramp at Rainbow Rapids	Reek Road (Indian Bridge)
Leelanau	Shalda Creek	Little Traverse Lake (T29N, R13W, S10)	Lake Michigan (T29N, R13W, S4)
Luce	Blind Sucker River	Blind Sucker Flooding Dam	
Luce	Two-Hearted River	CR 407 (High Bridge)	Lake Superior
Mackinac	Black River	Peters Truck Trail Footbridge	
Mackinac	Brevoort River	Brevoort Lake	
Mackinac	Crow River	Outfall of Amadon Pond	
Mackinac, Schoolcraft	Milakokia River	Inland-Limestone Co. Railroad Bridge (T41N, R13W, S1)	Lake Michigan
Mackinac	Millecoquins River	H-40 Bridge	Lake Michigan
Macomb	Clinton River	Yates Dam above Dequindre Road	Lake St. Clair
Macomb	North Branch Clinton River	32 Mile Road	Confluence with Clinton River

Type 4 Streams			
County	Stream Name	Upstream Boundary	Downstream Boundary
Manistee	Manistee River	Hodenpyl Reservoir	Red Bridge
Marquette	Big Garlic River	Forks (T49N, R27W, S12)	Lake Superior
Marquette	Harlow Creek	Railroad Bridge (T49N, T26W, S24)	Lake Superior
Marquette	Iron River	Lake Independence Dam	Lake Superior
Mason	Big South Branch Pere Marquette River	Confluence Beaver and Winnepesaug Creeks	Confluence with Pere Marquette River
Mason	Sable River	Pole Bridge (T19N, R15W, S3)	Hamlin Lake
Mecosta, Montcalm, Newaygo	Little Muskegon River		
Mecosta, Osceola	Muskegon River	US-10 (T18N, R8W, S34)	DNR River Bend Bluffs PAS (T15N, R9W, S31)
Menominee	Big Cedar River	Veterans Memorial Park Dam (T38N, R26W, S9)	Lake Michigan
Menominee	Walton Creek	Westmann Dam (T35N, R25W, S18)	Lake Michigan
Montmorency	Thunder Bay River	Atlanta Dam	Sucker Creek confluence upstream of Hillman Pond
Muskegon	White River	Hesperia Dam	Lake Michigan
Newaygo	Tamarack Creek		
Oceana	Pentwater River	Hart Dam	Confluence with Pentwater Lake (Long Bridge Road or B15)
Oceana	North Branch Pentwater River	Oceana Drive	Confluence with Pentwater River, Mainstream
Oceana	North Branch White River	Arthur Road	Confluence with White River
Ontonagon	Union River	South Boundary Road (T51N, R42W, S22)	Lake Superior
Oscoda	Au Sable River, mainstream	Mio Dam	Mio power line (T26N, R3E, S7)
Ottawa	Crockery Creek	Moore Road	Confluence with Grand River
Ottawa, Muskegon	North Branch Crockery Creek, Mainstream	Kenowa Avenue (T10N, R13W, S36)	Confluence with Crockery Creek, Mainstream at Ravenna
Ottawa	Sand Creek		
Presque Isle	Ocqueoc River	Barnhart Lake	Lake Huron
Schoolcraft	Manistique River	Papermill Dam	
St. Clair	Belle River		
St. Clair	Mill Creek		Confluence with Black River

Type 4 Streams			
County	Stream Name	Upstream Boundary	Downstream Boundary
St. Joseph	Mill Creek and tributaries	Preston Road (T7S, R12W, S7)	Impoundment (T7S, R12W, S32)
St. Joseph	Unnamed tributary (T6S, R10W, S26)		
Van Buren	Brush Creek except Reynolds Lake Drain	63 <sup>rd</sup> Avenue	Confluence with Paw Paw River
Van Buren	South Branch Paw Paw River, West Branch Paw Paw River, and (Gates Drain and tributaries		Railroad bridge downstream of I-94 (T3S, R14W, S14)
Van Buren	Pine Creek		101st Avenue (T1N, R12W, S32)
Wayne	Huron River	Belleville Lake Dam	Lake Erie

### **Gear Restricted Streams**

NOTE:

- 1) On any stream reach that is being managed under gear restrictions, it shall be unlawful to use or possess live bait, dead or preserved bait, organic or processed food on any of the waters or on shore.

### **Au Sable River**

- **Mainstream (Crawford County) from Burton's Landing to South Wakeley Bridge Road (Wakeley Bridge) – 9.0 miles**
  - Fishing Season: open for the entire year.
  - Possession Season: closed for the entire year; except that for children under the age of 12-years old the possession season is open for the entire year.
  - Tackle: artificial flies only; use or possession of scented material prohibited in the water or on shore.
  - Daily Possession Limit: zero (0) trout; except that for children under the age of 12-years old the daily possession limit shall be one (1) trout.
  - Size Limits: not applicable; except that for children under the age of 12-years old the minimum size limit shall be 8 inches and the maximum size limit shall be 12 inches for all species of trout. Trout less than 8 inches or greater than 12 inches must be released.
- **Mainstream (Crawford County) from South Wakeley Bridge Road (Wakeley Bridge) to McMasters Bridge Road (McMasters Bridge) – 8.0 miles**
  - Fishing Season: open for the entire year.
  - Possession Season: last Saturday in April - September 30 for Brook Trout and Brown Trout; open for the entire year for Rainbow Trout.
  - Tackle: artificial lures only.
  - Daily Possession Limit: two (2) trout; except that the daily possession limit shall not include more than one (1) trout 18 inches or greater.
  - Size Limits: minimum size limit: Brook Trout – 10 inches; Brown Trout – 18 inches; Rainbow Trout – 10 inches.

## Au Sable River

- **Mainstream (Oscoda County) from Mio power line (T26N, R3E, S7) to Evans Road (McKinley Bridge) – 15.0 miles**
  - Fishing Season: open for the entire year.
  - Possession Season: last Saturday in April - September 30 for Brook Trout and Brown Trout; open for the entire year for Rainbow Trout.
  - Tackle: artificial lures only.
  - Daily Possession Limit: two (2) trout; except that the daily possession limit shall not include more than one (1) trout 18 inches or greater.
  - Size Limits: minimum size limit: Brook Trout – 7 inches; Brown Trout – 18 inches; Rainbow Trout – 10 inches.
  
- **North Branch (Crawford County) from Sheep Ranch to confluence with Mainstream – 20.7 miles**
  - Fishing Season: open for the entire year.
  - Possession Season: last Saturday in April - September 30 for Brook Trout and Brown Trout; open for the entire year for Rainbow Trout.
  - Tackle: artificial flies only; use or possession of scented material prohibited in the water or on shore.
  - Daily Possession Limit: two (2) trout; except that the daily possession limit shall not include more than one (1) trout 18 inches or greater.
  - Size Limits: minimum size limit: Brook Trout – 10 inches; Brown Trout – 18 inches; Rainbow Trout – 10 inches
  
- **South Branch (Crawford County) from Chase Bridge Road (Chase Bridge) to Lower High Banks – 4.3 miles**
  - Fishing Season: open for the entire year.
  - Possession Season: closed for the entire year; except that for children under the age of 12-years old the possession season is open for the entire year.
  - Tackle: artificial flies only; use or possession of scented material prohibited in the water or on shore.
  - Daily Possession Limit: zero (0) trout; except that for children under the age of 12-years old the daily possession limit shall be one (1) trout.
  - Size Limits: not applicable; except that for children under the age of 12-years old the minimum size limit shall be 8 inches and the maximum size limit shall be 12 inches for all species of trout. Trout less than 8 inches or greater than 12 inches must be released.

### Au Sable River

- **South Branch (Crawford County) from Lower High Banks to confluence with Mainstream – 11.5 miles**
  - Fishing Season: open for the entire year.
  - Possession Season: last Saturday in April - September 30 for Brook Trout and Brown Trout; open for the entire year for Rainbow Trout.
  - Tackle: artificial flies only; use or possession of scented material prohibited in the water or on shore.
  - Daily Possession Limit: two (2) trout; except that the daily possession limit shall not include more than one (1) trout 18 inches or greater.
  - Size Limits: minimum size limit: Brook Trout – 10 inches; Brown Trout – 18 inches; Rainbow Trout – 10 inches.

### Black River

- **(Otsego and Montmorency counties) from Tin Shanty Bridge Road to the Town Corner Lake Stairs (T32N, R1E, S31 SE/SE) – 4.4 miles**
  - Fishing Season: open for the entire year.
  - Possession Season: last Saturday in April - September 30 for Brook Trout; open for the entire year for Brown Trout and Rainbow Trout.
  - Tackle: artificial lures only.
  - Daily Possession Limit: five (5) trout; except that the daily possession limit shall not include more than two (2) Brook Trout.
  - Size Limits: minimum size limit: Brook Trout – 10 inches; Brown Trout – 8 inches; Rainbow Trout – 10 inches.

### Cooks Run

- **(Iron County) from US Forest Hwy 16 to Confluence with South Branch Paint River – 4.5 miles**
  - From the last Saturday in April - September 30, this reach of stream shall be managed under Type 2 regulations, except the minimum size limit for Brook Trout shall be 7 inches.
  - From October 1 - the Friday before the last Saturday in April, this reach of stream shall be managed under gear restricted regulations as follows:
    - Fishing Season: October 1 - the Friday before the last Saturday in April.
    - Possession Season: closed; except that for children under the age of 12-years old the possession season is open.
    - Tackle: artificial flies only; use or possession of scented material prohibited in the water or on shore.
    - Daily Possession Limit: zero (0) trout; except that for children under the age of 12-years old the daily possession limit shall be one (1) trout.
    - Size Limits: not applicable; except that for children under the age of 12-years old the minimum size limit shall be 8 inches and the maximum size limit shall be 12 inches for all species of trout. Trout less than 8 inches or greater than 12 inches must be released.



### Duck Creek

- **(Gogebic County) from Railroad Bridge (T44N, R39W, S16 SE1/4 SE1/4) to Confluence with Middle Branch Ontonagon River – 6.5 miles**
  - Fishing Season: open for the entire year.
  - Possession Season: last Saturday in April - September 30 for Brook Trout and Brown Trout; open for the entire year for Rainbow Trout.
  - Tackle: artificial lures only.
  - Daily Possession Limit: two (2) trout.
  - Size Limits: minimum size limit: all species of trout – 10 inches.

### Escanaba River

- **(Delta County) from Boney Falls Dam to Mouth of Silver Creek (T40N, R23W, S11) – 14.2 miles**
  - Fishing Season: open for the entire year.
  - Possession Season: last Saturday in April - September 30 for Brook Trout and Brown Trout; open for the entire year for Rainbow Trout.
  - Tackle: artificial lures only.
  - Daily Possession Limit: two (2) trout.
  - Size Limits: minimum size limit: Brook Trout – 10 inches; Brown Trout – 12 inches; Rainbow Trout – 12 inches.

### Fox River

- **(Schoolcraft County) from Fox River State Forest Campground (T46N, R14W, S11) to M-28 – 7.6 miles**
  - From the last Saturday in April - September 30, this reach of stream shall be managed under Type 1 regulations.
  - From October 1 - the Friday before the last Saturday in April, this reach of stream shall be managed under gear restricted regulations as follows:
    - Fishing Season: October 1 - the Friday before the last Saturday in April.
    - Possession Season: closed; except that for children under the age of 12-years old the possession season is open.
    - Tackle: artificial flies only; use or possession of scented material prohibited in the water or on shore.
    - Daily Possession Limit: zero (0) trout; except that for children under the age of 12-years old the daily possession limit shall be one (1) trout.
    - Size Limits: not applicable; except that for children under the age of 12-years old the minimum size limit shall be 8 inches and the maximum size limit shall be 12 inches for all species of trout. Trout less than 8 inches or greater than 12 inches must be released.

### Huron River

- **(Oakland County) from the Sign below Moss Lake Outlet to the Signs 100 Yards below Wixom Road (T2N, R7E, S13) – 2.0 miles**
  - From the last Saturday in April - September 30, this reach of stream shall be managed under Type 1 regulations.
  - From April 1 - the Friday before the last Saturday in April, this reach of stream shall be managed under gear restricted regulations as follows:
    - Fishing Season: April 1 - the Friday before the last Saturday in April.
    - Possession Season: closed; except that for children under the age of 12-years old the possession season is open.
    - Tackle: artificial flies only; use or possession of scented material prohibited in the water or on shore.
    - Daily Possession Limit: zero (0) trout; except that for children under the age of 12-years old the daily possession limit shall be one (1) trout.
    - Size Limits: not applicable; except that for children under the age of 12-years old the minimum size limit shall be 8 inches and the maximum size limit shall be 12 inches for all species of trout. Trout less than 8 inches or greater than 12 inches must be released.

### Little Manistee River

- **(Lake County) from North Peacock Trail (Spencer's Bridge T19N, R13W, S5) to Johnson Road (Johnson's Bridge T20N, R14W, S24) – 7.5 miles**
  - Fishing Season: open April 1 - December 31.
  - Possession Season: last Saturday in April - September 30 for Brook Trout and Brown Trout; open April 1 - December 31 for all other species of trout and salmon.
  - Tackle: artificial flies only; use or possession of scented material prohibited in the water or on shore.
  - Daily Possession Limit: two (2) fish, any combination of trout and salmon.
  - Size Limits: minimum size limit: Brook Trout – 10 inches; Brown Trout – 15 inches; all other species of trout and salmon – 10 inches.

### Manistee River

- **(Crawford County) from CR 612 to M-72 – 9.2 miles**
  - Fishing Season: open for the entire year.
  - Possession Season: last Saturday in April - September 30 for Brook Trout and Brown Trout; open for the entire year for Rainbow Trout.
  - Tackle: artificial lures only.
  - Daily Possession Limit: two (2) trout; except that the daily possession limit shall not include more than one (1) trout 18 inches or greater.
  - Size Limits: minimum size limit: Brook Trout – 10 inches; Brown Trout – 18 inches; Rainbow Trout – 10 inches.

### Manistee River

- **(Crawford and Kalkaska counties) from M-72 to Sunset Trail Road (CCC Bridge T26N, R6W, S26) – 16.7 miles**
  - Fishing Season: open for the entire year.
  - Possession Season: last Saturday in April - September 30 for Brook Trout and Brown Trout; open for the entire year for Rainbow Trout.
  - Tackle: artificial flies only; use or possession of scented material prohibited in the water or on shore.
  - Daily Possession Limit: two (2) trout; except that the daily possession limit shall not include more than one (1) trout 18 inches or greater.
  - Size Limits: minimum size limit: Brook Trout – 10 inches; Brown Trout – 18 inches; Rainbow Trout – 10 inches.

### Paint Creek

- **(Oakland County) from Gunn Road to Tienken Road – 5.0 miles**
  - Fishing Season: last Saturday in April - September 30 for all species of trout.
  - Possession Season: last Saturday in April - September 30 for all species of trout.
  - Tackle: artificial lures only.
  - Daily Possession Limit: two (2) trout.
  - Size Limits: minimum size limit: all species of trout – 14 inches.

### Paint River

- **South Branch (Iron County) from the Mouth of Cooks Run (T44N, R36W, S28) to the Mouth of the North Branch of the Paint River (T44N, R35W, S8) – 10.0 miles**
  - From the last Saturday in April - September 30, this reach of stream shall be managed under Type 2 regulations, except the minimum size limit for Brook Trout shall be 7 inches.
  - From October 1 - the Friday before the last Saturday in April, this reach of stream shall be managed under gear restricted regulations as follows:
    - Fishing Season: October 1 - the Friday before the last Saturday in April.
    - Possession Season: closed; except that for children under the age of 12-years old the possession season is open.
    - Tackle: artificial flies only; use or possession of scented material prohibited in the water or on shore.
    - Daily Possession Limit: zero (0) trout; except that for children under the age of 12-years old the daily possession limit shall be one (1) trout.
    - Size Limits: not applicable; except that for children under the age of 12-years old the minimum size limit shall be 8 inches and the maximum size limit shall be 12 inches for all species of trout. Trout less than 8 inches or greater than 12 inches must be released.

## Pere Marquette River

- **(Lake County) from M-37 to the Downstream Edge of the Boat Ramp/Slide at Gleason's Landing (T17N, R14W, S13) – 8.5 miles**
  - Fishing Season: open for the entire year.
  - Possession Season: closed for the entire year; except that for children under the age of 12-years old the possession season is open for the entire year.
  - Tackle: artificial flies only; use or possession of scented material prohibited in the water or on shore.
  - Daily Possession Limit: zero (0) trout and salmon; except that for children under the age of 12-years old the daily possession limit shall be one (1) trout or salmon.
  - Size Limits: not applicable; except that for children under the age of 12-years old the minimum size limit shall be 8 inches and the maximum size limit shall be 12 inches for all species of trout and salmon. Trout and salmon less than 8 inches or greater than 12 inches must be released.
  
- **(Lake County) from the Downstream Edge of the Boat Ramp/Slide at Gleason's Landing (T17N, R14W, S13) to the Upstream Edge of the Boat Ramp at Rainbow Rapids – 10.5 miles**
  - From September 1 - the Friday before the last Saturday in April, this reach of stream shall be managed under Type 4 regulations, with the following exceptions:
    - Fishing Season: September 1 - the Friday before the last Saturday in April.
    - Possession Season: September 1 - the Friday before the last Saturday in April.
    - Daily Possession Limit: zero (0) Brook Trout; zero (0) Brown Trout; one (1) Rainbow Trout.
    - Size Limits: not applicable for Brook Trout and Brown Trout.
  - From the last Saturday in April - August 31, this reach of stream shall be managed under gear restricted regulations as follows:
    - Fishing Season: last Saturday in April - August 31.
    - Possession Season: last Saturday in April - August 31.
    - Tackle: artificial lures only.
    - Daily Possession Limit: two (2) trout or salmon; except that the daily possession limit shall not include more than one (1) Brown Trout 18 inches or greater, and except that the daily possession limit shall not include more than one (1) Rainbow Trout.
    - Size Limits: minimum size limit: all species of salmon – 10 inches; Brook Trout – 8 inches; Brown Trout – 8 inches; Rainbow Trout – 8 inches; except that the harvest of fish greater than 14 inches and less than 18 inches shall be prohibited for Brook Trout, Brown Trout, and Rainbow Trout.

## Pigeon River

- **(Cheboygan and Otsego counties) from Elk Hill Campground Horse Trail to Pine Grove Campground Stairs – 5.3 miles**
  - Fishing Season: open for the entire year.
  - Possession Season: last Saturday in April - September 30 for Brook Trout and Brown Trout; open for the entire year for Rainbow Trout.
  - Tackle: artificial lures only.
  - Daily Possession Limit: two (2) trout; except that the daily possession limit shall not include more than one (1) Brown Trout.
  - Size Limits: minimum size limit: Brook Trout – 10 inches; Brown Trout – 12 inches; Rainbow Trout – 10 inches.

### **Adfluvial Brook Trout Restoration Areas**

The following locations have more restrictive Brook Trout regulations. Fishing regulations on these waters shall supersede those in other sections which in any way conflict with the following: the possession season for Brook Trout is from the last Saturday in April – September 30, the minimum size limit on Brook Trout, Lake Trout, and Splake shall be 20 inches with a daily possession limit of one (1) Brook Trout, Lake Trout or Splake total combined.

- 1) Big Garlic River and tributaries (Marquette County), from County Road 550 (T50N, R26W, S33) downstream to Lake Superior (T50N, R26W, S21).
- 2) Big Huron River (Baraga and Marquette Counties), from Big Eric's Bridge (T52N, R30W, S35) downstream to Lake Superior (T52N, R29W, S18).
- 3) Iron River (Marquette County), from Lake Independence Dam (T51N, R27W, S13) downstream to Lake Superior (T51N, R26W, S18).
- 4) Little Huron River (Marquette County), from unnamed bridge crossing located at the southern border of section 20 (T52N, R29W, S20) downstream to Lake Superior (T52N, R29W, S17).
- 5) Pilgrim River and tributaries (Houghton County), from the headwaters downstream to Portage Lake (T54N, R33W, S5).
- 6) Portage/Torch Lake system (including the Portage River, Portage Canal, North Entry and South Entry, Houghton County).
- 7) Ravine River (Baraga County), from Sicotte Road (T51N, R31W, S2) downstream to Huron Bay (T51N, R31W, S4).
- 8) Silver River (Baraga County), from Silver River Falls (T51N, R32W, S26) downstream to Huron Bay (T51N, R31W, S18).
- 9) Slate River (Baraga County), from Slate River Falls (1/2 mile upstream from Skanee Road T51N, R31W, S9) downstream to Huron Bay (T51N, R31W, S8).

**Research Areas**

The following streams have ongoing research projects associated with them. Fishing regulations on these streams shall be as follows:

- 1) Salmon-Trout River (Marquette County) from Lower Falls (T51N, R28W, S13) down to Lake Superior: Fishing season: last Saturday in April - August 14; Possession season: last Saturday in April - August 14; Tackle: artificial lures and all types of natural bait may be used; Daily possession limit: five (5) trout and salmon in any combination, except that the daily possession limit shall not include more than three (3) trout 15 inches or greater and no more than one (1) Brook Trout; Size limits: minimum size limit: Brook Trout – 18 inches; Brown Trout – 8 inches; all other species of trout or salmon – 10 inches.

This Order shall be assigned number FO-200.20, and is titled “Statewide Trout, Salmon, Whitefish, Cisco, Grayling and Smelt Regulations”

This Order supersedes the Order titled “Statewide Trout, Salmon, Whitefish and Lake Herring Regulations,” effective April 12, 2019, and was assigned number FO-200.19A.

This Order shall take effect on April 1, 2020 and shall remain in effect until amended/rescinded.

Issued on this 9th day of January, 2020.

Approved as to matters over which the Natural Resources Commission has authority.

Rex Schlaybaugh, Jr., Chair  
Natural Resources Commission

Approved as to matters over which the Director has authority.

Daniel Eichinger  
Director

Signed copies of these orders/amendments/memos may be found at the home NRC office. Please call 517-284-6237 or email [nrc@michigan.gov](mailto:nrc@michigan.gov) to received a copy.

DE\_\_RS\_\_