

Michigan Department of Natural Resources

525 West Allegan Street
Lansing, MI 48909-7952

SFI 2015-2019 Standards and Rules®
Section 2: Forest Management

Recertification Audit



789 N. DIXBORO RD., ANN ARBOR, MI 48105 USA

T +1 734 769 8010 | F +1 734 769 0109

www.nsf.org



NSF Forestry Program Audit Report

A. Certificate Holder Information

Certificate Holder	Michigan Department of Natural Resources
Customer Number	5Y031
Contact Information (Name, title, phone & email)	Keith Kintigh, Forest Conservation and Certification Specialist kintighk@michigan.gov 989-619-2296
Scope of Certification	Forest Management Activities on approximately 3.9 million acres of Michigan State Forest. Exclusions: Long-term military lease lands, lands leased to Luce County, and Wildlife Areas that do not go through the compartment review process are not included in the scope of the certificate. SFI Forest Management code: NSF-SFI-FM-5Y031. Note: The certified State Forest system includes all lands which are inventoried under the MiFI system, are identified in a State Forest Compartment, and go through the Michigan DNR compartment review process.
Scope is accurate and appropriate, and matches on certificate, FRS and audit plan.	<input checked="" type="checkbox"/> Yes <input type="checkbox"/> No
Locations Included in the Certification Note: may be listed as plain text or included in an appendix or a separate file.	Forest Management Activities on approximately 3.9 million acres of Michigan State Forest.
Significant Changes to Operations or to the Standard(s)	None

B. Audit Team

Lead Auditor	Shannon Wilks, SFI Lead Auditor/FSC Team Auditor
Audit Team Member(s)	David White, SFI/FSC Team Auditor Beth Jacquain, FSC Lead Auditor/SFI Team Auditor Kyle Meister, SFI/FSC Team Auditor

C. Site Visits

Date and Location of Each Visit	Monday, October 26, 2020-Central Office Review Tuesday, October 27, 2020-Newberry FMU Tuesday, October 27, 2020-Traverse City FMU Wednesday, October 28, 2020-Atlanta FMU Wednesday, October 28, 2020-Escanaba FMU
---------------------------------	--



D. Audit Results

Auditor Recommendation	<input checked="" type="checkbox"/> Grant, maintain or renew certification <input type="checkbox"/> Grant, maintain or renew certification pending closure of CARs <input type="checkbox"/> Grant, maintain or renew certification pending follow-up assessment <input type="checkbox"/> Do not grant, maintain or renew certification (notify NSF office immediately)
Number and Summary of Findings of "Exceeds the Requirements"	<p>Two (2):</p> <p>Indicator 5.4.1: Provide recreational opportunities for the public, where consistent with forest management objectives.</p> <p>Finding: Michigan DNR's Program is exceptional by providing an extensive range of quality recreational activities within their forests for all. Observations during the 2020 audit confirm that recreational trails of all types are abundant, well maintained and handicapped accessible. Tremendous opportunities for year-round recreational opportunities are provided including camping, fishing, hunting, off-road vehicle (ORV), ATV and motorcycle riding, snowmobiling, skiing, cross-country skiing and hiking. Recreational opportunities provide exposure to states resources and provide benefits for local/state economies.</p> <p>Indicator 11.1.3: Staff education and training sufficient to their roles and responsibilities.</p> <p>Finding: MIDNR provides training in techniques and methods for engagement with the public at various levels. While technical forestry skills are common and apparent during field site visits, other training programs provide opportunities such as 1) all state employees have access to the State of Michigan Learning Center which provides at least 6 different trainings on conflict resolution. Many employees have participated in one of these a longstanding 2-day course titled "Crucial Conversations"; and 2) the Department offers a number of leadership training opportunities which include material on communication, facilitation and conflict resolution. Other opportunities include the Supervisor Academy (which is required for all new supervisors), the Great Lakes Leadership Academy and Fit Leaders Academy.</p>
Number and Summary of Findings of "Opportunity for Improvement"	<p>Two (2):</p> <p>Indicator 1.3.1: Forestlands converted to other land uses shall not be certified to this SFI 2015-2019 Forest Management Standard. This does not apply to forestlands used for forest and wildlife management such as wildlife food plots or infrastructure such as forest roads, log processing areas, trails etc.</p> <p>Finding: 347-acre Groveland Mine (Dickinson County) and 169 Acre 7 Mile Pit (Crawford County) leased for solar development have not been excluded from SFI Certified Lands. Interviews with Forest Conservation and Certification Specialist confirms no activity has been conducted on these parcels, planning phase only.</p> <p>Indicator 2.1.1: Documented reforestation plans, including designation of all harvest areas for either natural, planted or direct seeded regeneration and prompt reforestation, unless delayed for site-specific environmental or forest health considerations or legal requirements, through planting within two years or two planting seasons, or by planned natural regeneration methods within five years.</p> <p>Finding: Review of Forest Treatment Proposal (FTP) for Compartment 90 Stand 22 (38.8) acres does not contain comments regarding non-compliance to 2-year regeneration requirement due to Environmental Considerations. Harvesting was completed in 2019; Burning is planned in Spring 2021, Trenching planned for late 2021 but most likely 2022 and planting in April/May 2023 which is beyond the 2-year requirement but within the exception for Environmental Consideration.</p>



Number and Summary of Findings of "Minor Nonconformity"	-0-
Number and Summary of Findings of "Major Nonconformity"	-0-
Summary of review of nonconformities from previous audit(s)	<p>One (1) Minor NC: Indicator 14.1.1: Review of SFI website confirmed the 2018 Michigan DNR Public Summary Audit Report was not posted on the website. Review of SFI website during 2020 recertification audit confirms SFI Public Summary was posted.</p> <p>Two (2) OFI's: Indicator 1.1.5: Observations of field sites and documentation confirmed all plans matched ground conditions with exception of one ERA-Mesic Forest ERA #18768. Review of all field sites in 2020 confirmed ground conditions matched Forest Management Plans.</p> <p>Indicator 15.1.2: DNR website not updated with current monitoring reports, SFI Annual Audit Reports and other various reports used for reporting information on progress to FM standards. Review of DNR website confirms monitoring reports were updated. Some outdated language referencing SFI 2010-2014 program was observed.</p>
Notes from Opening and Closing Meetings	<p>Opening meeting was conducted via Microsoft Teams with DNR personnel, SFI Lead Auditor, FSC Lead Auditor and SFI/FSC Team Auditors on Monday 10/26/2020 at 8:00 AM. SFI and FSC procedures, objectives and audit plans were reviewed. Overview of Michigan DNR State Land certification program was presented and no significant changes to the program were noted. Field sites plans, safety and Covid procedures were discussed. Four audit teams visited Forest Management Units in 2020.</p> <p>Closing meeting was conducted via Microsoft Teams with DNR personnel, SFI, FSC Lead Auditors and SFI/FSC Team Auditors on Thursday 10/29/2020 @ 10:00 AM. Review of Confidentiality, audit process and protocols were discussed. Presentation of findings by SFI and FSC Lead Auditors. Questions, comments and schedule for 2021 surveillance audit was discussed prior to meeting adjournment.</p>
All logos and/or labels, including ANSI, ANAB, SFI, PEFC, ATFS, etc. are utilized correctly in accordance with NSF policies.	<input checked="" type="checkbox"/> Yes <input type="checkbox"/> No (a finding of nonconformity should be issued) <input type="checkbox"/> N/A (not using any labels or logos on any marketing materials, website, finished products, etc.)

E. Surveillance Review

Explain how the management system is capable of meeting the applicable requirements and expected outcomes of the audit	
Answer	N/A Recertification Audit



F. Recertification Review

Consider the performance of the program over the cycle through a review of all audits in the previous certification cycle, internal audits, management reviews, corrective actions and continual improvement. Describe the evidence supporting:

- effective interaction between all parts of the program and its overall effectiveness,
- overall effectiveness of the system in its entirety considering internal and external changes,
- demonstrated commitment by top management to maintain the system and maintain continuous improvement,
- program contribution to the achievement of the client's policy and objectives, and the intended results.

If there were any repeat findings during the audit cycle that indicate systemic issues, explain how they were addressed.

Answer	Review of previous non-conformances were isolated to incorrect use of certification trademark without license reference, BMP violation regarding rutting and drainage system for forest roads. Review of actions taken during subsequent surveillance audits, internal audits and management review confirmed continuous improvement to organizations certification program. Pilot project is on-going to inventory roads, culverts and bridges for assessment of condition and allocation of capital resources for improvement. Review of field sites and interview with personnel confirmed knowledge of BMP requirements and no violations were observed during 2020 recertification audit. Trademark review on website confirmed proper use with license.
---------------	---

G. Appendices

Appendix 1	Audit Notification
Appendix 2	SFI FM Checklist
Appendix 3	SFI Public Summary Report
Appendix 4	Field Site Notes
Appendix 5	Attendance Records
Appendix 6	Covid Appendix



Appendix 1

Audit Notification Letter

September 14, 2020

Revised: October 11, 2020

Keith Kintigh, Forest Conservation and Certification Specialist, Forest Resources Division
Michigan Department of Natural Resources, Gaylord Customer Service Center
1732 W. M-32nd
Gaylord, MI 49735

RE: Confirmation of 2020 SFI® and FSC® Recertification Audits, Michigan Department of Natural Resources

Dear Mr. Kintigh,

As we have discussed, we are scheduled to conduct the Annual Surveillance Audits of the Michigan DNR on **Monday October 26th through Thursday October 29th 2020**. These audits will include the **Traverse City, Atlanta, Newberry and Escanaba** Forest Management Units.

This is a full review of your SFI Program to confirm that it meets conformance requirements with the SFI 2015-2019 Standards and Rules, Section 2 and that continual improvement is being made. The audit also includes a similar review of the FSC Requirements. The FSC audit will be described in more detail in a separate document provided by SCS.

The audit team will consist of Shannon Wilks, NSF Lead Auditor, David White NSF Team Auditor, Beth Jacqumain, SCS Lead Auditor and Kyle Meister, SCS Team Auditor.

We have worked together to develop a tentative schedule, provided on the final page. The schedule was developed in conjunction with your detailed plans.

FSC Program: Audit plan provided separately.

Both Programs:

- A review of the outstanding findings from the 2019 Surveillance Audit.
- Review of any changes within DNR (e.g., staffing, land acquisitions, planning documents) that are pertinent to the certification.
- Evidence will include documents, interviews, and observations

Scope of Certification

Forest Management Activities on approximately 3.9 million acres of Michigan State Forest. Exclusions: Long-term military lease lands, lands leased to Luce County, and Wildlife Areas that do not go through the compartment review process are not included in the scope of the certificate. SFI Forest Management code: NSF-SFI-FM-5Y031.

Note: The certified State Forest system includes all lands which are inventoried under the MiFI system, are identified in a State Forest Compartment, and go through the Michigan DNR compartment review process.



SFI Tasks and Audit Focus Areas for 2020:

Review progress on achieving SFI objectives and performance measures and continual improvement as well as the results of the management review of your SFI Program.

- Review logo and/or label use;
- Confirm public availability of public reports;
- Evaluate the multi-site requirements;
- Field reviews covering all relevant aspects of SFI Objectives 1-15 (depending on characteristics of sites selected) and the non-field components of your SFI program, including:
 - Performance Measure 1.1: Program Participants shall ensure that forest management plans include long-term harvest levels that are sustainable and consistent with appropriate growth and yield models.
 - Performance Measure 1.2: Program Participants shall not convert one forest cover type to another forest cover type, unless in justified circumstances.
 - Performance Measure 1.3: Program Participants shall not have within the scope of their certification to this SFI 2015-2015 Forest Management Standard, forestlands that have been converted to non-forest use.
 - Performance Measure 2.1: Program Participants shall promptly reforest after final harvest.
 - Performance Measure 2.2: Program Participants shall minimize chemical use required to achieve management objectives while protecting employees, neighbors, the public and the environment, including wildlife and aquatic habitats.
 - Performance Measure 2.3: Program Participants shall implement forest management practices to protect and maintain forest and soil productivity.
 - Performance Measure 2.4: Program Participants shall manage so as to protect forests from damaging agents, such as environmentally or economically undesirable wildfire, pests, diseases, and invasive exotic plants and animals, to maintain and improve long-term forest health, productivity and economic viability. Performance Measure 2.4. Program Participants shall manage so as to protect forests from damaging agents, such as environmentally or economically undesirable wildfire, pests, diseases, and invasive exotic plants and animals, to maintain and improve long-term forest health, productivity and economic viability.
 - Performance Measure 2.5: Program Participants that deploy improved planting stock, including varietal seedlings, shall use best scientific methods.
 - Performance Measure 3.1: Program Participants shall meet or exceed all applicable federal, provincial, state and local water quality laws, and meet or exceed best management practices developed under Canadian or U.S. Environmental Protection Agency–approved water quality programs.
 - Performance Measure 3.2: Program Participants shall implement water, wetland and riparian protection measures based on soil type, terrain, vegetation, ecological function, harvesting system, state best management practices (BMPs), provincial guidelines and other applicable factors.
 - Performance Measure 4.1: Program Participants shall conserve biological diversity.
 - Performance Measure 4.2: Program Participants shall protect threatened and endangered species, Forests with Exceptional Conservation Values (FECV) and old-growth forests. Performance Measure 4.2. Program Participants shall protect threatened and endangered species, Forests with Exceptional Conservation Values (FECV) and old-growth forests.
 - Performance Measure 4.3: Program Participants shall manage ecologically important sites in a manner that takes into account their unique qualities.
 - Performance Measure 4.4: Program Participants shall apply knowledge gained through research, science, technology and field experience to manage wildlife habitat and contribute to the conservation of biological diversity.
 - Performance Measure 5.1: Program Participants shall manage the impact of harvesting on visual quality.
 - Performance Measure 5.2: Program Participants shall manage the size, shape and placement of clear-cut harvests.
 - Performance Measure 5.3: Program Participants shall adopt a green-up requirement or alternative methods that provide for visual quality.
 - Performance Measure 5.4: Program Participants shall support and promote recreational opportunities for the public.
 - Performance Measure 6.1: Program Participants shall identify special sites and manage them in a manner appropriate for their unique features.
 - Performance Measure 7.1: Program Participants shall employ appropriate forest harvesting technology and in-woods manufacturing processes and practices to minimize waste and ensure efficient utilization of harvested trees, where consistent with other SFI 2015-2019 Forest Management Standard Objectives.
 - Performance Measure 8.1: Program Participants shall recognize and respect Indigenous Peoples' rights.



- Performance Measure 8.2. Program Participants with forest management responsibilities on public lands shall confer with affected Indigenous Peoples with respect to sustainable forest management practices.
- Performance Measure 8.3. Program Participants are encouraged to communicate with and shall respond to local Indigenous Peoples with respect to sustainable forest management practices on their private lands.
- Performance Measure 9.1: Program Participants shall comply with applicable federal, provincial, state and local forestry and related social and environmental laws and regulations.
- Performance Measure 9.2: Program Participants shall take appropriate steps to comply with all applicable social laws at the federal, provincial, state and local levels in the country in which the Program Participant operates.
- Performance Measure 10.1: Program Participants shall individually and/or through cooperative efforts involving SFI Implementation Committees, associations or other partners provide in-kind support or funding for forest research to improve forest health, productivity and sustainable management of forest resources, and the environmental benefits and performance of forest products.
- Performance Measure 10.2. Program Participants shall — individually and/or through cooperative efforts involving SFI Implementation Committees, associations or other partners — develop or use state, provincial or regional analyses in support of their sustainable forestry programs.
- Performance Measure 10.3. Program Participants shall —individually and/or through cooperative efforts involving SFI Implementation Committees, associations or other partners— broaden the awareness of climate change impacts on forests, wildlife and biological diversity.
- Performance Measure 11.1, Indicator 3: Staff education and training sufficient to their roles and responsibilities.
- Performance Measure 11.2. Program Participants shall work — individually and/or with SFI Implementation Committees, logging or forestry associations, or appropriate agencies or others in the forestry community — to foster improvement in the professionalism of wood producers.
- Performance Measure 12.1. Program Participants shall support and promote efforts by consulting foresters, state, provincial and federal agencies, state or local groups, professional societies, conservation organizations, Indigenous Peoples and governments, community groups, sporting organizations, labor, universities, extension agencies, the American Tree Farm System® and/or other landowner cooperative programs to apply principles of sustainable forest management.
- Performance Measure 12.2. Program Participants shall support and promote, at the state, provincial or other appropriate levels, mechanisms for public outreach, education and involvement related to sustainable forest management.
- Performance Measure 12.3. Program Participants shall establish, at the state, provincial-or other appropriate levels, procedures to address concerns raised by loggers, consulting foresters, employees, unions, the public or other Program Participants regarding practices that appear inconsistent with the SFI 2015-2019 Forest Management Standard principles and objectives.
- Performance Measure 13.1: Program Participants with forest management responsibilities on public lands shall participate in the development of public land planning and management processes.
- Performance Measure 14.1: A Program Participant shall provide a summary audit report, prepared by the certification body, to SFI Inc. after the successful completion of a certification, recertification or surveillance audit to the SFI 2015-2019 Forest Management Standard.
- Performance Measure 14.2: Program Participants shall report annually to SFI Inc. on their conformance with the SFI 2015-2019 Forest Management Standard.
- Performance Measure 15.1: Program Participants shall establish a management review system to examine findings and progress in implementing the SFI 2015-2019 Forest Management Standard, to make appropriate improvements in programs, and to inform their employees of changes.

SFI Indicators outside of the scope of Michigan DNR's SFI program and excluded from the scope of the SFI Recertification Audit as follows:

- Indicator 2.1.3 involving planting exotic species
- Indicator 10.1.2 involving research on genetically engineered trees



Multi-Site Sampling Plan

The DNR is being audited as a multi-site organization per requirements for the SFI 2015-2019 Standards and Rules, Section 5: - Rules for Use of SFI On-Product Labels and Off-Product Marks and Section 9: Annex 1 - Audits of Multi-Site Organizations. There are 15 Forest Management Units. This Recertification Audit must cover the requirements of the central organization and 4 of the FMUs selected. These sites were selected based on proximity and length of time since previous audits.

Logistics

- Please reserve hotel rooms; Auditors will transition billing information upon arrival each evening.
- Please arrange for lunches each day.
- Auditors will travel in separate vehicles each day during the audit.
- We ask that you provide hardhats and other required personal protective equipment.

Field Site Selections

We randomly selected five (5) initial sites for each of the four (4) Management Units. Michigan DNR personnel reviewed sites selected for logistic and access. Auditors requested Michigan DNR add additional sites for each route based on Forest Management activities within previous 2 years. The lead auditors will narrow the selections and if needed request additional sites based on the location of those selections. We would ask that your unit staff develop an appropriate itinerary for each day. On the day of each site audit, we would ask your local forestry staff to tell us about any sales that are being actively harvested. If possible, we would add one or two of these sites. However, there may be more sites than we can get to, so the lead auditors will help shorten the list if needed.

Documentation Requested-Electronically

- Please provide all documents electronically through a Michigan DNR SharePoint site for access by all auditors.
- Required field site documents include: Project/Site descriptions, maps, Timber Sale contract field inspection Report, R-4050, compartment plans
- Required Contracts: Timber Sale Contracts (One/Day for Sites Visited); Reforestation Contracts (One/Day for Sites Visited), Chemical Application Contracts
- SFI Trained Loggers List
- List of Applicator License with Expiration Dates (Not Required if denoted within contract)
- Documentation for Internal Audit Reports and Management Review
- Procedures/work instructions
- For each unit visited training records for 2-3 staff including one person with 1 year and less than 5 years-experience and one person with 5-15 years' experience
- SFI Annual Report, normally provided to SFI in the first quarter
- Any other information that would be helpful to show conformance

The tentative schedule should be reviewed by all participants. This schedule can be adapted either in advance or on-site to accommodate any special circumstances. If you have any questions regarding this planned audit, please contact me.

Sincerely yours,

Shannon Wilks, SFI Lead Auditor

903-278-7766

Swilks@nsf.org



Audit Plan: 2020 SFI and FSC Recertification Audit

Michigan Department of Natural Resources October 26-29th, 2020

Sunday, October 25, 2020 – Travel Day

Beth Jacqmain and Kyle Meister (FSC), and Shannon Wilks and David White (SFI) will travel to Traverse City. Accommodations at Park Place Hotel, 300 East State Street, Traverse City. Many take-out dinner options within walking distance or delivery options at Grub Hub, Door dash, or Uber Eats. Confirmation #'s – David Price (36003), Kyle Meister (36004), David White (36005), Beth Jacqmain (36007), and Shannon Wilks (36008). All reservations are under Keith Kintigh.

Monday, October 26, 2020 – Opening Meeting and Central Office (Lansing) Review

Conducted remotely from MDNR Traverse City Customer Service Center

0740 Depart Park Place Hotel for MDNR Traverse City Customer Service Center, 2122 M-37, Traverse City, MI 49685

0800 Opening Meeting – Traverse City Customer Service Center Large Conference Room

- Review of 2019 Findings – Keith Kintigh
- Overview of Michigan State Forest Management System
 - Inventory, Review, and Co-Management
 - Annual Plan of Work
 - Timber sale/VMS
- 2020 Management Review and Work Instruction Revisions

1100 - 1700 Central Office Review – Noteworthy Projects and Interviews

(box lunch provided by DNR)

- Land Strategy Update – Kerry Wieber
- Forest Action Plan – Scott Jones
- State Forest/Regional Plan Revision – Dan Heckman
- Roads Review and Improvement/Capital Outlay – Kintigh
- New Cruising Protocol – Stephens or Heckman
- Climate Change Sprint Team - Price
- New Tribal Coordination Policy - Kintigh
- New Great Lakes Consent Decree with Five 1836 Treaty Area Tribal Governments - Kintigh
- Safety/Human Resources – Jan Hebekeuser
- Work on Hiring a Staff Archaeologist - Kintigh

1430 Depart for Newberry (approx. 3.5 hours) - Jacqmain, Wilks, Kintigh. Accommodation: Quality Inn and Suites, 13954 State Hwy M-28, Newberry, MI, 49868. Confirmation #71576238

1700 Return to Park Place Hotel - Meister, White, Price

Evening Dinner on own. Best option for UP Team may be to grab food in Gaylord or St. Ignace on route to Newberry.

UP/NLP Concurrent Audits

Tuesday, October 27, 2020 – Traverse City FMU (Meister/White)

0740 Depart Park Place Hotel for Traverse City Customer Service Center

0800 Traverse City FMU Overview – Dave Lemmien

0830 Prepare for field

0900 Field: Two audit teams (Webb/Price-West & Roell/Lemmien – East)

1700 Transit to Gaylord (approx. 1.5 hrs.).

Accommodation: Holiday Inn Express & Suites Gaylord, 525 Dickerson Road Confirmation #21765443.

Evening Dinner on own. Numerous restaurants with take-out options near hotel including Ruby Tuesdays, Bob Evans, and Big Buck Brewery. Other good restaurants in town include Iron Pig Smokehouse, Alpine Tavern, and Bearded Dogg Lounge.



Tuesday, October 27, 2020 – Newberry FMU (Jacqmain/Wilks)

- 0745 Depart Hotel for Newberry Field Office
- 0800 Newberry FMU Overview – Keith Magnusson
- 0830 Prepare for field
- 0900 Field: Two audit teams (Payment/Costa-Tour 1 & Livermore/Magnusson/Kintigh-Tour 2)
- 1700 Transit to Escanaba (approx. 2 hrs.).

Accommodation: Quality Inn & Suites 2603 N. Lincoln Road, Escanaba. Confirmation # 726403917.

Evening Dinner on own. Numerous restaurants with take-out and delivery options including Crispigna's, The Family Inn, Stonehouse, and Hereford and Hops Steakhouse.

Wednesday, October 28, 2020 – Atlanta FMU (Meister/White)

- 0710 Depart Hotel for Atlanta Field Office
- 0800 Atlanta FMU Overview – Cody Stevens
- 0830 Prepare for field
- 0900 Field: Two audit teams (Barber/Price-East & Zimmerman/Stevens-North)
- 1700 Auditors Return to Gaylord Accommodations

Evening Dinner on own

Wednesday, October 28, 2020– Escanaba FMU (Jacqmain/Wilks)

- 0745 Depart Hotel for Escanaba Field Office
- 0800 Escanaba FMU Overview – Eric Thompson
- 0830 Prepare for field
- 0900 Field: Two audit teams (Racine/Kintigh - East & Salter/Thompson -West)
- 1500 Return to Escanaba Office
- 1600 Closing Meeting
- 1700 Auditors Return to Escanaba Accommodations

Evening Dinner on own

Thursday, October 29, 2020

- 1000 Closing Meeting Escanaba (Jacqmain/Wilks/Kintigh) and Gaylord (Meister/White/Price) Customer Service Centers

Audit Teams and Assignments:

Traverse City: Meister-Kalkaska; White-TC Tour

Newberry: Wilks-Tour 1; Jacqmain-Tour 2

Atlanta: Meister-North; White-East

Escanaba: Wilks-East; Jacqmain-West



Appendix 2

SFI® 2015-2019, Section 2: Forest Management Standard Audit Checklist

5Y031 – Michigan Department of Natural Resources (MDNR)

Date of audit(s): October 26-29, 2020

1.2 Additional Requirements

SFI Program Participants with fiber sourcing programs (acquisition of roundwood and field-manufactured or primary-mill residual chips, pulp and veneer to support a forest products facility), must also conform to the *SFI 2015-2019 Fiber Sourcing Standard*.

Use of the *SFI* on-product labels and claims shall follow Section 5 - Rules for Use of *SFI* On-Product Labels and Off-Product Marks as well as ISO 14020:2000.

N/A Conforms Exceeds O.F.I. Minor NC Major NC

Notes: MDNR does not source fiber.

Objective 1 Forest Management Planning

To ensure forest management plans include *long-term* sustainable harvest levels and measures to avoid forest conversion.

Performance Measure 1.1

Program Participants shall ensure that forest management plans include *long-term* harvest levels that are sustainable and consistent with appropriate *growth-and-yield models*.

N/A Conforms Exceeds O.F.I. Minor NC Major NC

Notes: Review of MI DNR State Forest Growth and Yield-Working Version 7-26-2016.

1.1.1 Forest management planning at a level appropriate to the size and scale of the operation, including:

- a. a *long-term* resources analysis;
- b. a periodic or ongoing *forest inventory*;
- c. a land classification system;
- d. biodiversity at *landscape* scales;
- e. soils inventory and maps, where available;
- f. access to *growth-and-yield modeling* capabilities;
- g. up-to-date maps or a geographic information system (GIS);
- h. recommended sustainable harvest levels for areas available for harvest; and
- i. a review of non-timber issues (e.g., recreation, tourism, pilot projects and economic incentive *programs* to promote water *protection*, carbon storage, *bioenergy feedstock* production, or *biological diversity conservation*, or to address climate-induced ecosystem change).

N/A Conforms Exceeds O.F.I. Minor NC Major NC

Notes: Review of Forest Resources Division Strategic Plan 2014-2018 Michigan Department of Natural Resources and Region State Forest Management Plans (3).

- a. Development of FRD Strategic Plan. Inventory system provides information for resource managers to propose treatments. Each of the 15 Forest Management Units (FMU) conducts annual open house to present information to public and solicit comments. Compartment Reviews conducted with staff for input and resource objectives and formally approves treatments.
- b. One tenth (1/10) of state forest is inventoried each year-approximately 400,000 acres for continuous 10-year cycle.
- c. MiFI system appendix A contains classification list.
- d. Use of State Forest Management Plan, Forest Action Plan and Region Forest Management Plan provide guidance on landscape level.
- e. Soil Surveys and maps available from Natural Resource Conservation Service (NRCS).
- f. Use of FIA data for growth and yield
- g. FRD Resource Assessment Unit provides geographic information systems (GIS) and digital mapping.
- h. MI DNR State Forest Growth and Yield-Working Version 7-26-2016



- i. Review of non-timber issues are listed in State Forest Management Plan, Forest Action Plan, Region Forest Management Plans, Fisheries Division Lake and River Plans, Kirtland’s Warbler Breeding Range Conservation Plan, MI Comprehensive Trail Plan, Terrestrial Invasive species Plan, Wildlife Strategic Plan, WLD Deer Management Plan, Ecological Reference Area Plans and other relevant plans referenced. Evidence also reviewed in 2020 Forest Certification Management Review Report-First Draft Report February 20, 2020.

1.1.2 Documented current harvest trends fall within long-term sustainable levels identified in the forest management plan.

N/A Conforms Exceeds O.F.I. Minor NC Major NC

Notes: Review of 2020 harvest levels confirmed 1,060,575 cords is above the annual sustainable harvest level of **867,318 cords**. Increased volumes due to maturing forests with greater volumes per acre. State Forest Plan revision (FY 2021) will include updated sustainable harvest levels. Duration of contracts are effective for 3-5-year periods which will impact annual volumes increased. Previous years contracts, increased volumes from disease and increased volume per acre for maturing forest stands have all contributed to increased short term volumes above sustainable levels. Ten-year long-term average is below the sustainable harvest levels. Previous model (2016) only looked at acres. Volumes were estimated based on forest cover types. More detailed growth and yield tables using Remsoft modeling software. Currently writing first Remsoft model project underway.

3 Year Average: 937, 359 cords

5 Year Average: 885, 342 cords

10 Year Average: 849,172 cords

1.1.3 A forest inventory system and a method to calculate growth and yield.

N/A Conforms Exceeds O.F.I. Minor NC Major NC

Notes: Review of Forest Resources Division 2014-2018 Strategic Plan confirms- “FRD inventories and evaluates one-tenth, about 400,000 acres, of the state forest each year, ensuring a complete and comprehensive review of the entire state forest system over a continuous 10-year cycle. This state-of-the-art inventory program provides key decision-making information for resource managers to propose needed treatments. Each of the 15 Forest Management Units that comprise the state forest system conducts an annual open house to present information to the public to solicit comments regarding proposed treatments. A compartment review follows in which staff weighs input and resource objectives and formally approves treatments.” Interviews MIDNR personnel during opening meeting confirmed 10-year inventory process based on guidance within FRD Strategic Plan referenced. Revisions to modeling are identified in 1.1.2.

1.1.4 Periodic updates of forest inventory and recalculation of planned harvests to account for changes in growth due to productivity increases or decreases, including but not limited to: improved data, long-term drought, fertilization, climate change, changes in forest land ownership and tenure, or forest health.

N/A Conforms Exceeds O.F.I. Minor NC Major NC

Notes: Review of MI DNR State Forest Growth and Yield-Working Version 7-26-2016 confirm annual growth level of 867,318 cords. MI DNR is working on new growth and yield model “Remsoft” to replace the current model developed in cooperation with Michigan State University. Interviews with various personnel confirm knowledge and use of current model with adaptation to new system for improved updates based on changes. Planned implementation of Remsoft is FY2021 depending on Covid impacts.

1.1.5 Documentation of forest practices (e.g., planting, fertilization and thinning) consistent with assumptions in harvest plans.

N/A Conforms Exceeds O.F.I. Minor NC Major NC

Notes: Review of annual update of questionnaire confirms 55,356 acres harvested in FY19 with an estimated volume of 1,060,575 cords. Forest practices are updated through VMS (Vegetation Monitoring System). Monitoring documents were observed on harvest sites, planting, prescribed burns. Detailed work instructions were observed within Forest Certification Work Instructions revised 8/31/20. Monitoring is included for forest practices as required.



Performance Measure 1.2

Program Participants shall not convert one *forest cover type* to another *forest cover type*, unless in justified circumstances.

- 1.2.1 Program Participants shall not convert one *forest cover type* to another *forest cover type*, unless the conversion:
- Is in compliance with relevant national and regional *policy* and legislation related to land use and forest management;
 - Would not convert *native* forest types that are rare and ecologically significant at the *landscape* level or put any *native* forest types at risk of becoming rare; and
 - Does not create significant long-term adverse impacts on Forests with Exceptional Conservation Value, old-growth forests, forests critical to threatened and endangered species, and special sites.

N/A Conforms Exceeds O.F.I. Minor NC Major NC

Notes: Any forest type conversions must be approved through a formal interdisciplinary review process that includes wildlife and fisheries biologists, ecologists, recreation specialists, and foresters. Decisions are based in part on application of Michigan Kotar Forest Community and Habitat Type Classification System criteria, supplemented by field observations and foresters' local experience. All known Forests with Exceptional Conservation Value and native forest types that are rare and ecologically significant at the landscape level are identified and designated as Ecological Reference Areas in the DNR Geo-spatial Database, with management direction provided in DNR Forest Certification Work Instruction 1.4. No evidence of forest cover type conversions observed during field site audit. Forest cover is managed to encourage species already present in the stand which represents historical components.

- 1.2.2 Where a *Program Participant* intends to convert another *forest cover type*, an assessment considers:
- Productivity* and *stand* quality conditions and impacts which may include social and economic values;
 - Specific ecosystem issues related to the site such as invasive species, insect or disease issues, riparian *protection* needs and others as appropriate to site including regeneration challenges; and
 - Ecological impacts of the conversion including a review at the site and *landscape* scale as well as consideration for any appropriate mitigation measures.

N/A Conforms Exceeds O.F.I. Minor NC Major NC

Notes: Any forest type conversions must be approved through a formal interdisciplinary review process that includes wildlife and fisheries biologists, ecologists, recreation specialists, and foresters. Decisions are based in part on application of Michigan Kotar Forest Community and Habitat Type Classification System criteria, supplemented by field observations and foresters' local experience. Potential conversions are subject to discussion and consensus decision through the multidisciplinary compartment review planning process, which includes a public input process. Issues related to the site such as invasive species, insect or disease issues, riparian *protection* needs, and any regeneration challenges as appropriate to site are addressed in the compartment review planning process.

Performance Measure 1.3

Program Participants shall not have within the scope of their certification to this *SFI Standard*, forest lands that have been converted to non-forest land use. Indicator:

- 1.3.1 Forest lands converted to other land uses shall not be certified to this *SFI Standard*. This does not apply to forest lands used for forest and *wildlife* management such as *wildlife* food plots or infrastructure such as forest roads, log processing areas, trails etc.

N/A Conforms Exceeds O.F.I. Minor NC Major NC

Notes: Areas that are primarily managed for other purposes (for instance 101,567 acres of long-term military lease lands) are excluded from the scope of certification. Any new permanent conversions to non-forest use (such as large-scale mineral development) are removed from the scope of certification. Interview with Forest Conservation and Certification Specialist confirmed no lands have been converted since previous audit.

OFl: Forestlands converted to other land uses shall not be certified to this *SFI 2015-2019 Forest Management Standard*. This does not apply to forestlands used for forest and *wildlife* management such as *wildlife* food plots or infrastructure such as forest roads, log processing areas, trails etc.

Finding: 347-acre Groveland Mine (Dickinson County) and 169 Acre 7 Mile Pit (Crawford County) leased for solar development have not been excluded from SFI Certified Lands. Interviews with Forest Conservation and Certification Specialist confirm no activity has been conducted on these parcels, planning phase only.



Objective 2 Forest Health and Productivity

To ensure *long-term* forest *productivity*, carbon storage and *conservation* of forest resources through prompt *reforestation*, *afforestation*, *minimized* chemical use, *soil conservation*, and protecting forests from damaging agents.

Performance Measure 2.1

Program Participants shall promptly reforest after final harvest. Indicators:

2.1.1 Documented *reforestation* plans, including designation of all harvest areas for either natural, planted or direct seeded regeneration and prompt *reforestation*, unless delayed for site-specific environmental or *forest health* considerations or legal requirements, through *planting* within two years or two *planting* seasons, or by planned *natural regeneration* methods within five years.

N/A Conforms Exceeds O.F.I. Minor NC Major NC

Notes: Review of MI DNR Forest Certification Work Instruction revised August 21, 2020; Work Area Group 2-number 4 confirms documented plans. Review of all field sites confirmed reforestation with designated time frames with exception of field site Compartment 90 Stand 22 within Newberry FMU. Environmental considerations for site preparation confirm compliance to standard. Interview with personnel confirmed knowledge of requirements during field site audit. Review of all field sites visited confirmed use of Forest Treatment Proposals (FTP).

OFI: Work instruction 2.1 Paragraph 4: The Unit Manager will be responsible for documenting reasons for non-compliance (such as site-specific environmental considerations) when planting treatments are being schedule within MiFI Treatment Comments

Finding: Review of FTP for Compartment 90 Stand 22 (38.8) acres does not contain comments regarding non-compliance to 2-year regeneration requirement due to Environmental Considerations. Harvesting was completed in 2019; Burning is planned in Spring 2021, Trenching planned for late 2021 but most likely 2022 and planting in April/May 2023 which is beyond the 2-year requirement but within the exception for Environmental Consideration.

2.1.2 Clear criteria to judge adequate regeneration and appropriate actions to correct understocked areas and achieve acceptable species composition and stocking rates for *planting*, *direct seeding* and *natural regeneration*.

N/A Conforms Exceeds O.F.I. Minor NC Major NC

Notes: Review of MI DNR Forest Regeneration Survey Manual and Work Instruction revised August 21, 2020-Work Area Group 2-number 5 confirms documented plans. Review of all field sites confirmed reforestation with no observation of inadequate stocking levels. Review of all field sites visited confirmed use of Forest Treatment Proposals (FTP).

Interviews with field personnel confirmed knowledge of procedures and reforestation monitoring plans. Exception noted for Newberry FMU, but met requirement.

2.1.3 Plantings of exotic tree species should minimize risk to native ecosystems.

N/A Conforms Exceeds O.F.I. Minor NC Major NC

Notes: **2019 & 2018:** The use of non-native plants on public lands is prohibited by DNR Forest Certification Work Instruction 2.3 – Integrated Pest Management and Forest Health. Plantings of exotic trees were not observed on any field sites during the audit. Interviews with personnel confirmed no plantings of non-native species.

2.1.4 *Protection* of desirable or planned advanced *natural regeneration* during harvest.

N/A Conforms Exceeds O.F.I. Minor NC Major NC

Notes: Review of all field sites confirmed no damage to residual stands and protection of natural regeneration and mid-canopy species. Timber Sale Contract Field Inspection reports contained section for protection of reproduction. Timber Sale contracts require protection of regeneration and residual stems. Great examples of protection observed in Field sites Compartment 101 Stands 88, 89; Compartment 13 Stand 47.



2.1.5 *Afforestation programs* that consider potential ecological impacts of the selection and *planting* of tree species in non-forested *landscapes*.

N/A Conforms Exceeds O.F.I. Minor NC Major NC

Notes: Planting of trees in non-forested landscapes is rarely if ever done. DNR occasionally purchases/exchanges property and plants fields and understocked areas with indigenous species. When trees are planted soils maps and the Michigan Kotar Forest Community and Habitat Type Classification System is used to help guide the planting of tree species upon appropriate sites. Interview with personnel confirmed no afforestation projects since previous audit.

Performance Measure 2.2

Program Participants shall *minimize* chemical use required to achieve management *objectives* while protecting employees, neighbors, the public and the environment, including *wildlife* and *aquatic habitats*. Indicators:

2.2.1 *Minimized* chemical use required to achieve management *objectives*.

N/A Conforms Exceeds O.F.I. Minor NC Major NC

Notes: Review of chemical usage provided in FSC Data update/questionnaire and comparison with application rates are within or below manufacturer guidelines. Review of MI DNR Forest Certification Work Instruction 2.2 contains guidelines. Interview with personnel confirmed chemical site preparation is minimized and primarily used in the establishment/site preparation of red pine or treatment of invasive species.

2.2.2 Use of least-toxic and narrowest-spectrum pesticides necessary to achieve management objectives.

N/A Conforms Exceeds O.F.I. Minor NC Major NC

Notes: Review of MI DNR Forest Certification Work Instruction 2.2 contains guidelines. Prescriptions contain language-minimize pesticide use to achieve management objectives. Review of all field sites confirmed pesticide use at or below recommended label application rates.

2.2.3 Use of pesticides registered for the intended use and applied in accordance with label requirements.

N/A Conforms Exceeds O.F.I. Minor NC Major NC

Notes: Review of chemical usage provided in FSC questionnaire confirm primary chemicals used are Glyphosate and Triclopyr for site preparation, release of conifers and invasive species control. Labels confirm use for each approved by manufacturer. Overall chemical use is controlled and monitored by an approved Pesticide Application Plan (PAP) approved licensed applicator. Review of field sites confirmed proper use and application rates at/below label application rates.

2.2.4 The World Health Organization (WHO) type 1A and 1B pesticides shall be prohibited, except where no other viable alternative is available.

N/A Conforms Exceeds O.F.I. Minor NC Major NC

Notes: Review of DNR Forest Certification Work Instruction 2.2 contains a list of the chemicals that are authorized for use on the state forest, which excludes World Health Organization (WHO) type 1A and 1B pesticides, except where a specific Forest Stewardship Council derogation request is pending or has been approved:

http://www.michigan.gov/documents/dnr/WI_2.2UsePesticides-OtherChemicals_320944_7.pdf

Review of the Annual Summary Pesticide Use State Forest Lands confirms prohibitive pesticides are not used.

2.2.5 Use of pesticides banned under the Stockholm Convention on Persistent Organic Pollutants (2001) shall be prohibited.

N/A Conforms Exceeds O.F.I. Minor NC Major NC

Notes: Review of DNR Forest Certification Work Instruction 2.2 contains a list of the chemicals that are authorized for use on the state forest, which excludes World Health Organization (WHO) type 1A and 1B pesticides, except where a specific Forest Stewardship Council derogation request is pending or has been approved:

http://www.michigan.gov/documents/dnr/WI_2.2UsePesticides-OtherChemicals_320944_7.pdf

Review of the Annual Summary Pesticide Use State Forest Lands confirms prohibitive pesticides are not used.



2.2.6 Use of *integrated pest management* where feasible.

N/A Conforms Exceeds O.F.I. Minor NC Major NC

Notes: Review of MI DNR Forest Certification Work Instruction Section 2.3 confirms use of Integrated Pest Management Plan. Observations of field sites, review of timber sale inspection reports and interviews with personnel confirm use of guidelines and restrictions within Work Instruction documents including seasonal harvest restrictions and spruce budworm harvests. Review of Michigan Forest Health Highlights 2019 confirms significant amount of research, training, monitoring and mitigation activities are conducted.

2.2.7 Supervision of forest chemical applications by state- or provincial-trained or certified applicators.

N/A Conforms Exceeds O.F.I. Minor NC Major NC

Notes: Review of DNR Forest Certification Work Instruction 2.2 requires certified applicators or registered technicians. Review of field sites confirm use of Pesticide Application Plan, Pesticide Use Evaluation Report and qualified applicators with license.

2.2.8 Use of management practices appropriate to the situation, for example:

- a. notification of adjoining landowners or nearby residents concerning applications and chemicals used;
- b. appropriate multilingual signs or oral warnings;
- c. control of public road access during and immediately after applications;
- d. designation of streamside and other needed buffer strips;
- e. use of positive shutoff and minimal-drift spray valves;
- f. aerial application of forest chemicals parallel to buffer zones to *minimize* drift;
- g. monitoring of water quality or safeguards to ensure proper equipment use and *protection* of streams, lakes and other water bodies;
- h. appropriate transportation and storage of chemicals;
- i. filing of required state or provincial reports; and/or
- j. use of methods to ensure *protection of threatened and endangered species*.

N/A Conforms Exceeds O.F.I. Minor NC Major NC

Notes: Required reports include Pesticide Application Plans (R4029) and Pesticide Use Evaluation Reports (R4029-1), which are used to plan and monitor chemical use. Public notification, access control, and recommended buffers for sensitive areas (water bodies, etc.) are provided in DNR Forest Certification Work Instruction 2.2. http://www.michigan.gov/documents/dnr/WI_2.2UsePesticides-OtherChemicals_320944_7.pdf. Review of field sites confirmed use of required plans and monitoring reports. Safety procedures were evidenced with signs and access control.

Performance Measure 2.3

Program Participants shall implement forest management practices to protect and maintain forest and soil *productivity*. Indicators:

2.3.1 Process to identify soils vulnerable to compaction, and use of appropriate methods, including the use of soil maps where available, to avoid excessive soil disturbance.

N/A Conforms Exceeds O.F.I. Minor NC Major NC

Notes: Observations during field sites confirmed no violation of BMP guidelines or soil erosion observed. Interviews with various personnel confirmed knowledge of procedures and observation of Timber Sale Inspection forms (R4031-6) which contain monitoring aspects for soil protection. Interviews with staff confirmed use of topographic and soil maps within GIS layers. Review of MI DNR Michigan Forestry Best Management Practices for Soil and Water Quality confirm Rutting and Related Issues are addressed. Observation within Timber Contracts Section 5.4 contain soil protection requirements. Review of Work Instruction 3.1 Forest Operations; Work Area Group 3-Best Management Practices (BMPs) contains provisions. Soil maps are available to personnel in GIS layers within the Geographic Decision Support Environment.



2.3.2 Use of erosion control measures to *minimize* the loss of soil and site *productivity*.

N/A Conforms Exceeds O.F.I. Minor NC Major NC

Notes: Auditor reviews during field site audits confirmed use of water bars, logging slash, rock/gravel and vegetation to control soil movement and erosion. Riparian Management Zones were delineated and exceeding minimum requirements within sites observed. Observation of the Erosion and Sedimentation Plans ([Part 91 permit](#)) were confirmed for road construction activities No evidence of soil movement or erosion was identified. Monitoring was observed by personnel during review of Timber Sale Inspections. Some sites (Refer to Field Site notes-Escanaba FMU Compartment 39-Wolf Chase; Newberry FMU-Teaspoon Timber Sale) were restricted for frozen ground/dry conditions to minimize soil impact. Interviews with personnel confirmed knowledge of requirements and water quality guidelines. Observations of various forest roads confirmed systematic approach to ensure water is protected. Grading and general maintenance has been impacted due to Covid restrictions, but no water quality issues were observed. Pilot project is underway in Escanaba to classify/categorize roads and bridges to assess current condition. Project will be utilized to develop plans for financial quantification and correction of deficient items. Plan is to expand for remainder of districts in 2021.

2.3.3 Post-harvest conditions conducive to maintaining site *productivity* (e.g., limited rutting, retained down woody debris, *minimized skid trails*).

N/A Conforms Exceeds O.F.I. Minor NC Major NC

Notes: Guidelines are described in Michigan Forestry Best Management Practices for Soil and Water Quality with additional guidance provided in Appendix H-Sale Specific Conditions & Requirements (5.4.1) of Timber Sale Contract. Operations are to cease immediately if equipment and weather conditions result in rutting of roads and skid trails which is 12 inches or greater in depth and 50 feet in length. The Unit Manager or his/her representative may restrict hauling and/or skidding if ruts exceed the specified depth. No sites observed violated BMP requirements. Observation of limited rutting and use of logging debris observed during field sites (refer to field site notes). Skid trails were properly placed and utilized. Monitoring is conducted on all harvest sites-review of Forest Treatment Proposals (FTP) and Timber Sale Contract-Field Inspection Report. No issues observed by review of monitoring reports. Additional guidelines are documented within Work Instruction 3.1.

2.3.4 Retention of vigorous trees during partial harvesting, consistent with scientific silvicultural standards for the area.

N/A Conforms Exceeds O.F.I. Minor NC Major NC

Notes: The MI DNR uses retention guidelines as provided in IC4110 Within-Stand Retention Guidance. Monitoring is conducted through use of Timber Sale Contract-Field Inspection Report. Auditor reviews during field sites confirmed dominant trees retained based on silvicultural prescriptions. Minimal damage was observed to retained species. Exceptions of retention were wildlife trees/snags.

2.3.5 Criteria that address harvesting and site preparation to protect soil *productivity*.

N/A Conforms Exceeds O.F.I. Minor NC Major NC

Notes: The MI DNR Timber Sale Proposal Checklist (R4031-6) to minimize loss of soil and site productivity. DNR Forest Certification Work Instruction 3.1 directs the use of forestry BMPs (Michigan Forestry Best Management Practices for Soil and Water Quality) to minimize impacts to soil productivity. Section 9 and 10 contain sections on harvesting and site preparation aspects related to soil protection. All contracts have General Conditions & Requirements...Clause 5.4 Soil Protection: The Purchaser shall avoid operating equipment when soil conditions are such that excessive damage will result as determined by the Unit Manager or their representative. Rutting criteria are available in the form of additional "Sale Specific Conditions & Requirements". These specify (5.4.1) "Operations are to cease immediately if equipment and weather conditions result in rutting of roads and skid trails which is 12 inches or greater in depth and 50 feet in length. The Unit Manager or his/her representative may restrict hauling and/or skidding if ruts exceed the specified depth. With the Unit Manager or his/her representative's approval, the Purchaser may return to the area when risk of rutting has decreased."



2.3.6 Road construction and skidding layout to *minimize* impacts to soil *productivity*.

N/A Conforms Exceeds O.F.I. Minor NC Major NC

Notes: Field site visits confirmed use of existing roads and log decks when possible. Some DNR maintained roads were in need of repair but excessive rain and Covid restrictions have prevented scheduled maintenance. No BMP issues, sedimentation or soil movement observed. Use of water-bars, rock/gravel, vegetation and logging debris to prevent soil movement on steeper terrain was observed. Inventory of culverts, bridges and other road assets is in process with pilot project in Escanaba FMU. Project is utilizing Survey 123 application to take data from existing roads, bridges, culverts and waterflow. Automatic download of information into database. Data is currently being analyzed with priorities for funding being developed. Historical references the current contract (Trout Unlimited) is for western UP with total scope based on 9212 miles in LP; 8735 miles in UP. 2020 Capital for road infrastructure is \$4.15 MM and total remaining balance of \$7.7MM.

Performance Measure 2.4

Program Participants shall manage so as to protect forests from damaging agents, such as environmentally or economically undesirable wildfire, pests, diseases and *invasive exotic plants and animals*, to maintain and improve *long-term forest health, productivity* and *economic viability*. Indicators:

2.4.1 *Program* to protect forests from damaging agents.

N/A Conforms Exceeds O.F.I. Minor NC Major NC

Notes: Review of MI DNR Forest Health and Monitoring [website](#) confirms program and plan to respond to damaging agents. Review of Michigan 2019 Pest Conditions Report confirms monitoring and status reports are updated. Review of [2019 Forest Health Highlights Report](#) contains status. Review of Natural Resources and Environmental Protection Act (Excerpt) Act 451 of 1994 contains regulatory requirements related to Forest Fires.

2.4.2 Management to promote healthy and productive forest conditions to *minimize* susceptibility to damaging agents.

N/A Conforms Exceeds O.F.I. Minor NC Major NC

Notes: Review of Work Instruction document 2.3, Compartment Reviews and Forest Management plans for all sites visited confirmed management activities to promote forest health and productivity. Reforestation, site prep and herbicide/pesticide applications utilized in accordance with manufacturers labels. Routine monitoring based on YOE schedules confirm management activities. All sites observed confirmed active forest management and/or routine monitoring. Compartment review process is utilized to address forest health issues. Refer to [Work Instruction](#) document for additional evidence. Field site observation of Oak Wilt treatment area- (Refer to Site Notes-Traverse City FMU Ellis Lake; Escanaba FMU Dry Creek SBW).

2.4.3 Participation in, and support of, fire and pest prevention and control *programs*.

N/A Conforms Exceeds O.F.I. Minor NC Major NC

Notes: All FMU's visited maintained qualified and trained staff of fire protection personnel. Review of MIDNR FRD Training by Position Guide requires fire management for designated personnel. Interviews and observation of annual training plan records confirmed. Pest prevention and control programs are detailed in Forest Health section of MI DNR Website and Michigan's Terrestrial Invasive Species State Management Plan.

Performance Measure 2.5

Program Participants that deploy improved planting stock, including varietal seedlings, shall use best scientific methods. Indicator:

2.5.1 *Program* for appropriate research, testing, evaluation and deployment of *improved planting stock*, including *varietal seedlings*.

N/A Conforms Exceeds O.F.I. Minor NC Major NC

Notes: Review of Michigan Forest Health Highlights 2019 confirms use of disease resistant beech saplings. Michigan DNR Forest Health Program and US Forest Service Northern Research Station have coordinated efforts to develop. Seed orchards utilized grafting from Upper Peninsula scale resistant trees for reforestation efforts. Interviews with personnel confirmed pine seedlings were sourced from PRT in Michigan.



Objective 3 **Protection and Maintenance of Water Resources**

To protect the water quality of rivers, streams, lakes, *wetlands* and other water bodies through meeting or exceeding *best management practices*.

Performance Measure 3.1

Program Participants shall meet or exceed all applicable federal, provincial, state and local water quality laws, and meet or exceed *best management practices* developed under Canadian or U.S. Environmental Protection Agency–approved water quality *programs*.

Indicators:

3.1.1 *Program* to implement federal, state or provincial water quality *best management practices* during all phases of management activities.

N/A Conforms Exceeds O.F.I. Minor NC Major NC

Notes: Review of all field sites visited contained Timber Sales contracts with language for compliance with BMPs and use of qualified logging professional as defined by Michigan Sustainable Forestry Initiative Implementation Committee or Wisconsin Forest Industry Safety and Training Alliance (FISTA) trained. Review of Sale inspection monitoring and Timber Sale Proposal Checklist confirmed use of BMP monitoring system. No BMP issues observed during field site inspections. Additional guidelines are located within Work Instruction 3.1 Forest Operations. Capital outlay for road, bridge and culverts is on-going in conjunction with Inventory Project referenced in 2.3.6. Impacts of routine maintenance on forest roads were observed due to Covid travel restrictions. No erosion or water quality issues observed.

3.1.2 Contract provisions that specify conformance to *best management practices*.

N/A Conforms Exceeds O.F.I. Minor NC Major NC

Notes: Review of Timber Contracts contain Clause 5.3 requiring purchaser to implement all Best Management Practices as outlined in DNR publication "[Sustainable Soil and Water Quality Management Practices on Forest Land](#)". All sites that were sold contain Timber Contracts with required language.

3.1.3 Monitoring of overall *best management practices* implementation.

N/A Conforms Exceeds O.F.I. Minor NC Major NC

Notes: Review of field sites confirmed use of form R4050E "Timber Sale Contract – Field Inspection Report" is used to record monitoring of all aspects of the harvest, including road issues, BMPs, cleanup, soil protection, aesthetic consideration, stump heights, and other aspects of utilization. The first page of the form includes the checklist item "BMP Applications" supported by date-specific inspection remarks. Confirmed the use of the Field Inspection Report by field personnel during review of documents for field sites selected. Periodic BMP effectiveness is monitored in conjunction with MI SFI Implementation Committee (SIC) with the latest report available for 2016 Monitoring results.

Performance Measure 3.2

Program Participants shall implement water, *wetland* and *riparian protection* measures based on soil type, terrain, vegetation, ecological function, harvesting system, state *best management practices (BMPs)*, provincial guidelines and other applicable factors.

Indicators:

3.2.1 *Program* addressing management and *protection* of rivers, streams, lakes, *wetlands*, other water bodies and *riparian areas* during all phases of management, including the layout and construction of roads and *skid trails* to maintain water reach, flow and quality.

N/A Conforms Exceeds O.F.I. Minor NC Major NC

Notes: Review of Work Instruction section 3.1 and Michigan Forestry Best Management Practices for Soil and Water Quality contains management procedures. Requirements in Timber Sale Contracts require use of BMPs and qualified logging professionals. All harvest sites visited confirmed use of qualified logging professionals. Field site observations confirmed use of Riparian Management Zones and proper crossings based on BMP requirements. No observation of soil movement or erosion into RMZ areas during field site visits. Additional regulatory requirements are documented within Natural Resources and Environmental Protection Act Part 301, 303, 305.



3.2.2 Mapping of rivers, streams, lakes, *wetlands* and other water bodies as specified in state or provincial *best management practices* and, where appropriate, identification on the ground.

N/A Conforms Exceeds O.F.I. Minor NC Major NC

Notes: A review of the GIS resources confirmed detailed and high-quality maps with relevant and required features cataloging water resources are included in data layers. All maps reviewed during field sites included pertinent wetland/water features with legends for descriptions.

3.2.3 Document and implement plans to manage and protect rivers, streams, lakes, *wetlands*, other water bodies and *riparian areas*.

N/A Conforms Exceeds O.F.I. Minor NC Major NC

Notes: Review of Rivers, streams, lakes, wetlands and other water bodies are identified during timber sale preparation as provided in the DNR Timber Sale Proposal Checklist (R4031-6). Field observations, supplemented by documents reviewed and interviews, confirm that streams, lakes, and other waterbodies are protected during all operations, in most cases by leaving significant uncut buffer areas. Review of [Natural River Management Plans](#) and Michigan Forestry Best Management Practices for Soil and Water Quality (refer to 3.1.2) confirm compliance. Monitoring is conducted during operations and documented within Timber Sale Contract-Field Inspection Report.

3.2.4 Plans that address wet-weather events in order to maintain water quality (e.g., *forest inventory* systems, wet-weather tracts, definitions of acceptable operating conditions).

N/A Conforms Exceeds O.F.I. Minor NC Major NC

Notes: Review of Michigan Forestry Best Management Practices for Soil and Water Quality section 9 contains guidelines. Work Instruction document 3.1 Forest Operations contains procedures for operating on State Forest Lands. No observations of BMP violations, rutting beyond guidelines or soil movement or erosion during field site reviews. Interviews with personnel and harvest contractors confirmed routine (weekly at minimum) site visits to all active operations for inspections. Maps with defined harvest areas and RMZ/buffer along RMZs and protected water features. Buffers observed exceeded minimum guidelines.



Objective 4 Conservation of Biological Diversity

To manage the quality and distribution of *wildlife habitats* and contribute to the *conservation of biological diversity* by developing and implementing *stand-* and *landscape-*level measures that promote a diversity of types of *habitat* and successional stages, and the *conservation* of forest plants and animals, including *aquatic species, as well as threatened and endangered species, Forests with Exceptional Conservation Value, old-growth forests* and ecologically important sites.

Performance Measure 4.1

Program Participants shall conserve biological diversity. Indicators:

4.1.1 Program to incorporate the *conservation of native biological diversity*, including species, *wildlife habitats* and ecological community types at *stand* and *landscape* levels.

N/A Conforms Exceeds O.F.I. Minor NC Major NC

Notes: Review of Work Instruction 1.4 Biodiversity Management on State Forest Lands, Michigan State Forest Management Plan-April 2008, Wildlife Division Strategic Plan 2016-2020, Michigan Deer Management Plan, DNR Parks and Recreation Division 2009-2019 Strategic Plan, Kirtland's Warbler Breeding Range Conservation Plan, Michigan DNR Kirtland's Warbler Operational Plan 2016, Forest Resources Division Strategic Plan 2014-2018, 2013-2017 Fisheries Division Strategic Plan and Draft Michigan DNR Forest Action Plan 2020 - contains guidance and goals. Review of site visits confirmed examples of biodiversity, wildlife habitats and ecological community types at stand levels. Refer to field site notes for following: Newberry FMU-MWR Research site, Halifax GEM (Grouse Enhanced Management) area, Birdshot Mix: Traverse City FMU-Fletcher Sharptail RX Area, Fletcher KW Block, Site 3-GEMS, Site 4-Platte River Corridor, Escanaba FMU-Berg Farm, Wolf Chase; Atlanta FMU-Squaw Bay Wooded Dune Swale ERA, Shoepac Sinkholes-Karst Topography ERA. State forests are managed with Wildlife Division and Forestry. Interviews with personnel confirm strong working relationship between various organizations with management responsibility for forest land, including Forestry, Wildlife, Fisheries, Parks and Conservation personnel.

4.1.2 Development of criteria and implementation of practices, as guided by regionally based *best scientific information*, to retain *stand-level wildlife habitat* elements such as snags, stumps, mast trees, down woody debris, den trees and nest trees.

N/A Conforms Exceeds O.F.I. Minor NC Major NC

Notes: Review of Michigan State Forest Management Plan Wildlife Division Strategic Plan, MI DNR In-Stand Retention Guidance and Deer Winter Range Guidelines 2013-all documents contain guidelines and requirements. Review of field sites confirmed retention of snags, den trees, retention islands and corridors for deer wintering habitat. Monitoring was observed within checklist during harvesting activities-refer to Timber Sale Proposal Checklist (4031-6). Implementation guidance is documented within Work Instruction section 1.4.



4.1.3 Document diversity of *forest cover types* and age or size classes at the individual ownership or forest tenure level, and where credible data are available, at the *landscape* scale. Working individually or collaboratively to support diversity of *native forest cover types* and age or size classes that enhance *biological diversity* at the *landscape* scale.

N/A Conforms Exceeds O.F.I. Minor NC Major NC

Notes: Review of Work Instruction document 1.3 Regional State Forest Management Plan Implementation and Revision contains section for analyses of landscape-level conditions and trends, as provided by:

- a. Approved statewide, regional or local plans identified in the document “A Comprehensive Summary of the Department of Natural Resources Planning Process for Natural Resource Management in Michigan”, specifically including:
 - 1) The Michigan State Forest Management Plan (2008),
 - 2) Michigan’s Wildlife Action Plan,
 - 3) The Kirtland’s Warbler Management Plan,
 - 4) DNR River Assessments,
 - 5) Pigeon River Country Concept of Management.
- b. Analyses of the forest cover types in each Management Area, specifically including:
 - 1) Age-class distributions,
 - 2) Cover type structural and compositional trends,
 - 3) Basal area, size classes and stocking,
 - 4) Primary understory vegetation types.
- c. Analysis of successional trends and site suitability analysis using the Kotar Guide to Forest Communities and Habitat Types for each Management Area.
- d. Forest health conditions and trends analysis.
- e. Recreational use assessments.
- f. Economic demand assessments.

Review of Document 32.22-07-Forest Management (Issued 7/11/2005) section 3 & 4 contains procedures, including Forest Cover types, mapping and age classes. Compartment Review process contains all required documents.

4.1.4 *Program Participants* shall participate in or incorporate the results of state, provincial, or regional *conservation* planning and priority-setting efforts to conserve biological diversity and consider these efforts in forest management planning. Examples of credible priority-setting efforts include state *wildlife* action plans, state forest action plans, relevant *habitat conservation* plans or provincial *wildlife* recovery plans.

N/A Conforms Exceeds O.F.I. Minor NC Major NC

Notes: Interviews with personnel and review of State Forest Management Plans (SFMP) and Regional State Forest Management Plan (RSFMP) confirms requirements are met. Three (3) RSFMP were developed to bridge gaps between SFMP and annual inventory and planning performed by local management units. RSFMP were developed for 3 Ecoregions- Northern Lower Peninsula (NLP), Eastern Upper Peninsula (EUP) and Western Upper Peninsula (WUP). The three RSFMP provide landscape level direction that guide the local management decisions for forest cover types and habitat. RSFMP provide direct linkage to Michigan State Forest Management Plan, Michigan Wildlife Action Plan, Michigan Of-Road Vehicle Plan, Kirtland’s Warbler Recovery Plan, Michigan State Comprehensive Outdoor Recreation Plan and Natural River Plans. Other management plans incorporated into the development can be found within the Michigan State Forest Management Plan. Revision to Michigan Wildlife Action Plan 2020 is currently on-going.

4.1.5 *Program* to address *conservation* of known sites with viable occurrences of significant species of concern.

N/A Conforms Exceeds O.F.I. Minor NC Major NC

Notes: Review of Michigan SFMP section 4.1 contains guidance on management of Rare Communities and Rare Species. Review of Timber Sale Proposals on all field sites visited contained verification for Unique Resources including Natural Heritage Database check for occurrences, Special Conservation Areas or other ecologically unique features and protection of stand-level habitat elements. DNR procedures for implementation of RSFMP are located in Work Instruction document 1.3 and 1.4.



4.1.6 Identification and *protection of non-forested wetlands*, including bogs, fens and marshes, and *vernal pools* of ecological significance.

N/A Conforms Exceeds O.F.I. Minor NC Major NC

Notes: Review of Michigan SFMP section 5.1-5.3 contains guidance on management of Special Conservation Areas, High Conservation Areas and Ecological Reference Areas. Review of field sites confirm protection of ERA (Ecological Reference Area) sites. Sensitive sites were protected with seasonal harvesting restrictions such as frozen ground conditions. DNR procedures for implementation of RSFMP are located in Work Instruction document 1.3 and 1.4.

4.1.7 Participation in *programs* and demonstration of activities as appropriate to limit the introduction, spread and impact of *invasive exotic plants and animals* that directly threaten or are likely to threaten *native* plant and animal communities.

N/A Conforms Exceeds O.F.I. Minor NC Major NC

Notes: Review of Work Instruction Document 2.3 contains guidelines for Integrated Pest Management and Forest Health. Review of Michigan's Terrestrial Invasive Species State Management Plan and 2019 Forest Health Highlights. Michigan DNR [website](#) contains resources for identification and mitigation for invasive species. Review of Timber Sale Proposal Site Specific Conditions & Requirements contain requirements for operating restrictions and other conditions used to prevent harvesting during specific times to minimize the spread of certain diseases such as Emerald Ash Borer and Beech Bark Disease. Use of quarantines from MI Department of Agriculture also noted within documentation. Interviews with personnel were knowledgeable of invasive species and mitigation requirements. Field site audits contain site specific references for invasive species and management applications.

4.1.8 Consider the role of natural disturbances, including the use of prescribed or natural fire where appropriate, and *forest health* threats in relation to *biological diversity* when developing forest management plans.

N/A Conforms Exceeds O.F.I. Minor NC Major NC

Notes: Review of 2019 Forest Resources Division Accomplishments Report: 318 wildfires burned 1,015 acres. 92 prescribed fires on 8,800 acres to improve habitat, reduce invasive species and help prevent future wildfires. DNR personnel use prescribed to maintain early successional habitat and reduce invasive species. Review of Forest Resources Division Strategic Plan 2014-2018- Prescribed fire — the controlled application of fire by experts under specified weather conditions — plays an important role in the sustainable management of forested lands, wildlife habitat and the restoration of natural communities. FRD staff provides prescribed burning leadership and expertise on all state-managed lands. Fire Management is listed on [website](#).



Performance Measure 4.2

Program Participants shall protect threatened and endangered species, Forests with Exceptional Conservation Values (FECV) and old-growth forests. Indicators:

4.2.1 Program to protect threatened and endangered species.

N/A Conforms Exceeds O.F.I. Minor NC Major NC

Notes: Review of pre-audit FSC questionnaire: MIDNR manages 338,585 acres of forest classified as High Conservation Forest/Area and 184,000 acres as Conservation Area (Protected from commercial harvesting). Conservation land is comprised of: Dedicated and Proposed Natural Areas, National Natural Landmarks, TNC Natural Area Registry, Critical Dunes, Natural Rivers, Ecological Reference Areas, and Type 1 & 2 Old Growth. Note: These areas are not mutually exclusive of the HCV Types as described below. Note 2: This total may or may not match HCV areas as some HCV areas must be managed to maintain, enhance or restore those attributes of interest. HCV Areas include Kirtland's Warbler Management Units, Piping Plover Critical Habitat, Ecological Reference Areas, Dedicated State Natural Areas, State Natural Rivers, Critical Dunes and others. All proposed forest treatments are reviewed for possible impact upon RTE species. See DNR Forest Certification Work Instruction 1.6: http://www.michigan.gov/documents/1_133198_7.6.pdf. Compartment reviews are conducted with public input and posted on DNR [website](#). Measures taken to protect any RTE species, habitats and/or plant communities is evaluated on a case-by-case basis during the Compartment inventory process using SCA and HCVA layers in our GDSE and our Rare Species guidelines. Data bases for RTE species are routinely checked for ROW maintenance requests, use permits, event permits, burn plans, etc., and special management requirements are provided when known species are identified for an area."

The DNR Wildlife Division is a co-manager of the Michigan state forest and is responsible for the protection of RTE species. Interviews with field personnel supported considerable information provided by the program of a superb program for protection of RTE species and communities. Michigan DNR's GIS layer identifies "Biodiversity Areas" including ecological reference areas, high conservation value areas, and special conservation areas. The audit team visited several sites during the audit; each had a site-specific analysis and recommendations. Major accomplishment in 2020 was removal of Kirtland's Warbler from Endangered Species List.

4.2.2 Program to locate and protect known sites flora and fauna associated with viable occurrences of *critically imperiled* and *imperiled* species and communities also known as *Forests with Exceptional Conservation Value*. Plans for *protection* may be developed independently or collaboratively, and may include *Program Participant* management, cooperation with other stakeholders, or use of easements, *conservation* land sales, exchanges, or other *conservation* strategies.

N/A Conforms Exceeds O.F.I. Minor NC Major NC

Notes: Known sites associated with viable occurrences of critically imperiled and imperiled species and communities are identified in the Michigan Natural Heritage Database, which is managed under a MOU and DNR contract with the Michigan State University Extension (MSUE) Michigan Natural Features Inventory: <http://mnfi.anr.msu.edu/>. Conservation of Forests with Exceptional Conservation Value is accomplished by the updated DNR network of Ecological Reference Areas and further described in the proposed Michigan State Forest Management Plan (2008, with 2014 Amendment). Management direction for ERAs is provided in DNR Forest Certification Work Instruction 1.4- Biodiversity Management on State Forest Lands: http://www.michigan.gov/documents/dnr/WI_1.4BiodMgt_320943_7.pdf.

4.2.3 Support of and participation in plans or *programs* for the *conservation* of *old-growth forests* in the region of ownership or forest tenure.

N/A Conforms Exceeds O.F.I. Minor NC Major NC

Notes: Management direction for Special Conservation Areas (SCA), High Conservation Value Areas (HCVAs) and Ecological Reference Areas (ERAs) is provided in DNR Forest Certification Work Instruction 1.4- Biodiversity Management on State Forest Lands: http://www.michigan.gov/documents/dnr/WI_1.4BiodMgt_320943_7.pdf. Review of pre-audit FSC questionnaire confirms-No harvests occur in old growth designations.



Performance Measure 4.3

Program Participants shall manage ecologically important sites in a manner that takes into account their unique qualities. Indicators:

4.3.1 Use of information such as existing natural heritage data or expert advice in identifying or selecting ecologically important sites for *protection*.

N/A Conforms Exceeds O.F.I. Minor NC Major NC

Notes: Michigan Natural Heritage data and stakeholder consultation were used in the identification of an updated network of [Ecological Reference Areas](#) and are used regularly during planning. MI DNR maintains maps and forest management plans within [website](#) for compartment review process and public input, including Special Management Areas. Personnel can propose sites for special protection or as ERAs. Botanists, biologists, ecologists, or other specialists with the Michigan Natural Features Inventory (State Natural Heritage program) review these proposed sites as part of process for the network. This program also periodically reviews each ERA to assess conditions and can recommend practices as needed.

4.3.2 Appropriate mapping, cataloging and management of identified ecologically important sites.

N/A Conforms Exceeds O.F.I. Minor NC Major NC

Notes: MI DNR maintains maps and forest management plans within [website](#) for compartment review process and public input, including Special Management Areas. Review of ERA's and Old Growth site during field site confirmed maps. Review of Work Instruction Document 1.4 contain guidelines for managing ecological sites. Review of ERA sites by audit team confirmed appropriate maps and management plans matched ground conditions.

Performance Measure 4.4

Program Participants shall apply knowledge gained through research, science, technology and field experience to manage *wildlife habitat* and contribute to the *conservation of biological diversity*. Indicators:

4.4.1 Collection of information on *Forests with Exceptional Conservation Value* and other *biodiversity*-related data through *forest inventory* processes, mapping or participation in external *programs*, such as NatureServe, state or provincial heritage *programs*, or other credible systems. Such participation may include providing non-proprietary scientific information, time and assistance by staff, or in-kind or direct financial support.

N/A Conforms Exceeds O.F.I. Minor NC Major NC

Notes: The Michigan Natural Features Inventory develops and maintains abstracts for forest communities in Michigan, which include Forests of Exceptional Conservation Value. Known sites are identified in the Michigan Natural Heritage Database, which is managed under a MOU and DNR contract with the MSUE Michigan Natural Features Inventory: <http://mnfi.anr.msu.edu/>. Interviews and demonstration of the GIS system layers confirm that this program has been implemented. Overview of GIS system conducted during opening meeting.

4.4.2 A methodology to incorporate research results and field applications of *biodiversity* and ecosystem research into forest management decisions.

N/A Conforms Exceeds O.F.I. Minor NC Major NC

Notes: Interdisciplinary and multi-tier management programs enable field personnel have access to research results, analysis and planning tools throughout the Michigan DNR, which they incorporate into their forest management decisions. DNR personnel, biologists and other stakeholders with networks to the research communities are directly involved in all forestry decisions. The department participates in a variety of training and research programs with regional experts including Michigan Invasive Species Grant Program, Michigan Volunteer Fire Assistance Grant Program, Snowmobile Trail Improvement Program, Forest Inventory and Analysis, Forest Stewardships Grant, ORV Trail Improvement Program, MI Natural Resources Trust Fund, Wildland Fire Protection Association and Great Lakes Forest Fire Compact, Community Forestry Grant Program and Good Neighbor Authority.



Objective 5 *Management of Visual Quality and Recreational Benefits*

To manage the visual impact of forest operations and provide recreational opportunities for the public.

Performance Measure 5.1

Program Participants shall manage the impact of harvesting on *visual quality*. Indicators:

5.1.1 Program to address visual quality management.

N/A Conforms Exceeds O.F.I. Minor NC Major NC

Notes: Review of Timber Sale Proposal Checklist (4031-6) contains Aesthetics section. Review of field sites confirmed no major aesthetic issues. Field sites observed were efficiently harvested with adequate utilization of fiber observed. Timber Sale contracts contain language for compliance to regulations and BMP requirements.

5.1.2 Incorporation of aesthetic considerations in harvesting, road, landing design and management, and other management activities where visual impacts are a concern.

N/A Conforms Exceeds O.F.I. Minor NC Major NC

Notes: Audit team did not identify any aesthetic issues during review of field sites. The MI DNR Timber Sale Proposal Checklist (4031-6) addresses visual quality and timber sale specifications for harvest operations. Clauses in contracts address utilization and where needed special practices in sensitive areas. No BMP/aesthetic issues observed in timber sale layout, forest road and skid trail construction.

Performance Measure 5.2

Program Participants shall manage the size, shape and placement of clearcut harvests. Indicators:

5.2.1 Average size of clearcut harvest areas does not exceed 120 acres (50 hectares), except when necessary to meet regulatory requirements, achieve ecological *objectives* or to respond to *forest health* emergencies or other natural catastrophes.

N/A Conforms Exceeds O.F.I. Minor NC Major NC

Notes: In 2019 the average clearcut size was 39.0 acres. Harvest cuts observed contained green trees retained for wildlife habitat purposes, and these trees help address visual impacts.

5.2.2 Documentation through internal records of clearcut size and the process for calculating average size.

N/A Conforms Exceeds O.F.I. Minor NC Major NC

Notes: Records are maintained within MIFI inventory system. Database is utilized to manage forest management activities and monitor results of treatments, inventory and other relevant information. Harvest cut sales are documented within system and results are available based on completion/final of sales.

Performance Measure 5.3

Program Participants shall adopt a *green-up requirement* or alternative methods that provide for *visual quality*. Indicators:

5.3.1 *Program* implementing the *green-up requirement* or alternative methods.

N/A Conforms Exceeds O.F.I. Minor NC Major NC

Notes: Review of DNR Forest Certification Work Instruction 2.1 (Regeneration) provides green-up requirements. Review of DNR-FRD Forest Certification Green-Up Guidelines. Audit team review of all field sites confirmed no adjacent green-up issues observed.

5.3.2 Harvest area tracking system to demonstrate conformance with the *green-up requirement* or alternative methods.

N/A Conforms Exceeds O.F.I. Minor NC Major NC

Notes: Audit team review of all field sites confirmed no adjacent green-up issues observed. Interview with personnel confirmed forest management treatments are scheduled within VMS (Vegetation Management System) database within MIFI system and ground conditions are confirmed prior to scheduling activities.



5.3.3 Trees in clearcut harvest areas are at least 3 years old or 5 feet (1.5 meters) high at the desired level of stocking before adjacent areas are clearcut, or as appropriate to address operational and economic considerations, alternative methods to reach the *performance measure* are utilized by the *Program Participant*.

N/A Conforms Exceeds O.F.I. Minor NC Major NC

Notes: Audit team review of all field sites confirmed no adjacent green-up issues observed.

Performance Measure 5.4

Program Participants shall support and promote recreational opportunities for the public. Indicator:

5.4.1 Provide recreational opportunities for the public, where consistent with forest management *objectives*.

N/A Conforms Exceeds O.F.I. Minor NC Major NC

Notes: Michigan DNR's Program is exceptional by providing an extensive range of quality recreational activities within their forests. Observations during the 2020 audit confirm that recreational trails of all types are abundant and well maintained. Tremendous opportunities for year-round recreational opportunities are provided including camping, fishing, hunting, off-road vehicle (ORV), ATV and motorcycle riding, snowmobiling, skiing, cross-country skiing and hiking. Recreational opportunities provide exposure to states resources and provide benefits for local/state economies.



Objective 6 *Protection of Special Sites*

To manage lands that are geologically or *culturally important* in a manner that takes into account their unique qualities.

Performance Measure 6.1

Program Participants shall identify *special sites* and manage them in a manner appropriate for their unique features. Indicators:

6.1.1 Use of information such as existing natural heritage data, expert advice or stakeholder consultation in identifying or selecting *special sites* for *protection*.

N/A Conforms Exceeds O.F.I. Minor NC Major NC

Notes: All proposed forest treatments are reviewed for possible impact upon historic/cultural/ecological resources. See DNR Forest Certification Work Instruction 1.6 and DNR Guidance for Preparing Timber Sale Proposal Checklist (IC4031-6 and DNR Form R4031-6). Process confirmed by reviewing the documentation for field sites audited by team. Interviews with personnel confirmed process.

6.1.2 Appropriate mapping, cataloging and management of identified *special sites*.

N/A Conforms Exceeds O.F.I. Minor NC Major NC

Notes: Cultural and historic sites are listed in databases and protected during management activities. DNR MiFi system Appendix H-Instructions for reviewing Special Conservation Areas (SCAs) while conducting inventory confirms process for identifying, reviewing, cataloging, mapping and management of special sites. Categories are identified in tables with references for management. Requirements for the preservation of cultural and historic sites are provided in DNR Forest Certification Work Instruction 3.1. http://www.michigan.gov/documents/3_133210_7.1.pdf. Records are maintained and observed by auditors for tribal correspondence on cultural/tribal sites and management activities. Cultural and historic sites, Natural Heritage Program element occurrence records, and DNR Special Conservation Area and High Conservation Value Areas are data layers in the DNR Geographic Decision Support Environment. Maps and plans for special sites/ERA sites visited were detailed and accurate, and management practices appropriate. Refer to site notes for additional evidence for individual sites.



Objective 7 Efficient Use of Fiber Resources

To *minimize* waste and ensure the efficient use of fiber resources.

Performance Measure 7.1

Program Participants shall employ appropriate forest harvesting technology and in-woods manufacturing processes and practices to *minimize* waste and ensure efficient utilization of harvested trees, where consistent with other *SFI Standard objectives*. Indicator:

7.1.1 *Program* or monitoring system to ensure efficient utilization, which may include provisions to ensure:

- a. management of harvest residue (e.g., slash, limbs, tops) considers economic, social and environmental factors (e.g., organic and nutrient value to future forests and the potential of increased fuels build-up) and other utilization needs;
- b. training or incentives to encourage loggers to enhance utilization;
- c. exploration of markets for underutilized species and low-grade wood and alternative markets (e.g., bioenergy markets); or
- d. periodic inspections and reports noting utilization and product separation.

N/A Conforms Exceeds O.F.I. Minor NC Major NC

Notes: Specific utilization standards are incorporated in each harvest contract (Clause 2.2 Utilization). A review of timber sale contracts and inspection reports for completed harvest sites visited confirmed that foresters monitor utilization closely using the Timber Sale Contract – Field Inspection Report (R4050). Form has checklist for utilization aspects that include the following: utilization, removal of cut products, slash disposal, cleanup of area, safety and ability to document detailed notes confirm requirements a-d are met. Audit team review of field sites confirmed no non-conformances or issues identified.



Objective 8 Recognize and Respect *Indigenous Peoples'* Rights

To recognize and respect *Indigenous Peoples'* rights and traditional knowledge.

Performance Measure 8.1

Program Participants shall recognize and respect Indigenous Peoples' rights. Indicator:

8.1.1 *Program Participants* will provide a written *policy* acknowledging a commitment to recognize and respect the rights of *Indigenous Peoples*.

N/A Conforms Exceeds O.F.I. Minor NC Major NC

Notes: The 2007 Inland Consent Decree between Five (5) Tribes within 1836 Treaty of Washington (Ceded Territory) and the Michigan DNR outlines DNR's commitment to, and recognition of, Indigenous Peoples rights.

Performance Measure 8.2

Program Participants with forest management responsibilities on public lands shall confer with affected *Indigenous Peoples* with respect to sustainable forest management practices. Indicator:

8.2.1 *Program* that includes communicating with affected *Indigenous Peoples* to enable *Program Participants* to:

- a. understand and respect traditional forest-related knowledge;
- b. identify and protect spiritually, historically, or culturally important sites;
- c. address the use of non-timber forest products of value to Indigenous Peoples in areas where Program Participants have management responsibilities on public lands; and
- d. respond to Indigenous Peoples' inquiries and concerns received.

N/A Conforms Exceeds O.F.I. Minor NC Major NC

Notes: Tribal coordinators are identified for each Department of Natural Resource Division-Statewide, Fisheries, Forest Management, Law Enforcement, Recreation and Wildlife. Records of correspondence with Tribes are documented and contain the purpose/comments with additional aspects for details. The 2007 Inland Consent Decree contains specific items related to hunting and gathering rights. Review of Work Instruction 9.1: Collaboration with Tribes in Regard to Management of State Forest Land confirms all requirements of a-d are met.

Performance Measure 8.3

Program Participants are encouraged to communicate with and shall respond to local *Indigenous Peoples* with respect to sustainable forest management practices on their private lands. Indicators:

8.3.1 *Program Participants* are aware of *traditional forest-related knowledge*, such as known cultural heritage sites, the use of wood in traditional buildings and crafts, and flora that may be used in cultural practices for food, ceremonies or medicine.

N/A Conforms Exceeds O.F.I. Minor NC Major NC

Notes: Review of Work Instruction 9.1: Collaboration with Tribes in Regard to Management of State Forest Land provides guidelines and procedures. Rights are identified within 2007 Inland Consent Decree and Federally Recognized Tribes.

8.3.2 Respond to *Indigenous Peoples'* inquiries and concerns received.

N/A Conforms Exceeds O.F.I. Minor NC Major NC

Notes: Tribal coordinators are identified for each Department of Natural Resource Division-Statewide, Fisheries, Forest Management, Law Enforcement, Recreation and Wildlife. Records of correspondence (2019-2020) with Tribes are documented and contain the purpose/comments with additional aspects for details.



Objective 9 Legal and Regulatory Compliance

To comply with applicable federal, provincial, state and local laws and regulations.

Performance Measure 9.1

Program Participants shall comply with applicable federal, provincial, state and local *forestry* and related social and environmental laws and regulations. Indicators:

9.1.1 Access to relevant laws and regulations in appropriate locations.

N/A Conforms Exceeds O.F.I. Minor NC Major NC

Notes: Review of [website](#) contains information regarding laws, administrative regulations and guides. Access to offices/buildings was limited during 2020 audit due to Covid restrictions. Interviews with personnel confirmed mandated regulatory information is posted in prominent areas at work locations/offices/shops.

9.1.2 System to achieve compliance with applicable federal, provincial, state, or local laws and regulations.

N/A Conforms Exceeds O.F.I. Minor NC Major NC

Notes: Review of 2019 Law Enforcement Division Annual Report compiled by Michigan Department of Natural Resources Law Enforcement Division. Review of Timber Sale Contracts contain language for compliance with environmental, social, endangered species occupational health and safety and other regulatory requirements. Review of Work Instruction Document 7.2 for Legal Compliance and Administration of Contracts. Relations and legal requirements pertaining to Native American Tribes are addressed in DNR Forest Certification Work Instruction 9.1. Observed [natural resource violation website](#) for reporting. Field site observations confirmed no violations of BMP, Endangered Species or other regulations.

9.1.3 Demonstration of commitment to legal compliance through *available regulatory action information*.

N/A Conforms Exceeds O.F.I. Minor NC Major NC

Notes: Interview with Forest Conservation Certification Specialist and Forest Planning and Operations Section Manager confirmed no violations or knowledge of pending actions. Review of internet on October 26, 2020 confirmed no observation of regulatory violations. One field site observed firewood theft and on-going investigation/regulatory actions.

Performance Measure 9.2

Program Participants shall take appropriate steps to comply with all applicable social laws at the federal, provincial, state and local levels in the country in which the *Program Participant* operates. Indicators:

9.2.1 Written *policy* demonstrating commitment to comply with social laws, such as those covering civil rights, equal employment opportunities, anti-discrimination and anti-harassment measures, workers' compensation, *Indigenous Peoples'* rights, workers' and communities' right to know, prevailing wages, workers' right to organize, and occupational health and safety.

N/A Conforms Exceeds O.F.I. Minor NC Major NC

Notes: Access to offices/buildings was limited during 2020 audit due to Covid restrictions. Interviews with personnel confirmed mandated regulatory information is posted in prominent areas at work locations/offices/shops.

Review of Work Instruction documents contain guidelines for safety and indigenous peoples. Review of MI DNR employee handbook contains policies to comply with social laws.

9.2.2 *Forestry enterprises* will respect the rights of workers and labor representatives in a manner that encompasses the intent of the International Labor Organization (ILO) core conventions.

N/A Conforms Exceeds O.F.I. Minor NC Major NC

Notes: All staff except managers and supervisors are members of a union confirmed during interview with Forest Certification Specialist.



Objective 10 Forestry Research, Science and Technology

To invest in *forestry* research, science and technology, upon which sustainable forest management decisions are based and broaden the awareness of *climate change* impacts on forests, *wildlife* and *biological diversity*.

Performance Measure 10.1

Program Participants shall individually and/or through cooperative efforts involving *SFI Implementation Committees*, associations or other partners provide in-kind support or funding for forest research to improve *forest health, productivity* and sustainable management of forest resources, and the environmental benefits and performance of forest products. Indicators:

10.1.1 Financial or in-kind support of research to address questions of relevance in the region of operations. Examples could include, but are not limited to, areas of forest *productivity*, water quality, biodiversity, community issues, or similar areas which build broader understanding of the benefits and impacts of forest management.

N/A Conforms Exceeds O.F.I. Minor NC Major NC

Notes: Forest Legacy

The Forest Legacy program secured a \$1.5 million federal grant to acquire the nearly 600-acre Elk Forest at Black River property as part of the Pigeon River Country State Forest. It boasts more than a mile of Black River frontage in the heart of Michigan's elk country.

Forest Stewardship

Wheels to Woods: How do you instill a love of the forest in kids? Take them there! In the past four years, the Wheels to Woods program has helped get 41,651 kids, teachers and parents on forest field trips.

Stewardship plans: Michigan reached a milestone when Grossman Forestry completed its 1,000th Forest Stewardship Plan, the most of any company. Michigan relies on private sector foresters to develop plans for landowners.

Urban and Community Forestry

The Urban and Community Forestry program helped 243 communities, home to 5 million people, with street tree inventories and management plans in 2019. It also supported:

- The Tree City program honoring support of healthy urban trees. In 2019, 122 Tree Cities, seven Tree Campuses, one Tree Line and one Tree Campus Healthcare USA were certified.
- Awards of \$80,500 in tree-planting grants to 36 communities and organizations with DTE Energy Foundation funds, resulting in more than 1,000 trees planted, 1,300 volunteer hours and an additional \$243,000 in local match.
- Efforts to secure \$175,000 to restore a historic urban sawmill on Belle Isle Park, Detroit.
- A boost to Michigan State University's UCF enrollment to 68 majors and 21 minors.

Forest Health

The forest health team aerially surveyed more than 25 million acres of land for insect damage, disease and other forest health issues.

Heterobasidion root disease: On the ground, nearly 850 acres of pine plantations entered for harvest in 2020 were surveyed for the disease.

Hemlock woolly adelgid: The DNR, Michigan Department of Agriculture and Rural Development, Michigan State University, The Nature Conservancy, Alger Conservation District, USDA Forest Service, Ottawa County and local organizations partnered to seek and contain the invasive insect. Efforts included surveying more than 15,000 acres in 20 counties.

Oak wilt: Twenty-six oak wilt epicenters were treated with more than 20,000 feet of trench line, protecting hundreds of acres of high-value oak.

Review of Michigan SIC 2019 Annual Survey and Sustainable Forestry Initiative 2019 Annual Report Survey list research projects and funding MI DNR is involved with.



10.1.2 Research on genetically engineered trees via *forest tree biotechnology* shall adhere to all applicable federal, state, and provincial regulations and international protocols ratified by the United States and/or Canada depending on jurisdiction of management.

N/A Conforms Exceeds O.F.I. Minor NC Major NC

Notes: The use of genetically modified organisms is not allowed on certified state forest lands per DNR Forest Certification Work Instruction 2.3.

Performance Measure 10.2

Program Participants shall individually and/or through cooperative efforts involving *SFI Implementation Committees*, associations or other partners develop or use state, provincial or regional analyses in support of their *sustainable forestry programs*. Indicator:

10.2.1 Participation, individually and/or through cooperative efforts involving *SFI Implementation Committees* and/or associations at the national, state, provincial or regional level, in the development or use of some of the following:

- a. regeneration assessments;
- b. growth and drain assessments;
- c. *best management practices* implementation and conformance;
- d. *biodiversity conservation* information for family forest owners; and
- e. social, cultural or economic benefit assessments.

N/A Conforms Exceeds O.F.I. Minor NC Major NC

Notes: Document review of SIC meeting agenda notes confirmed active membership within MI SIC. SIC agenda included following projects:

1. MI WI MN Habitat Conservation Plan for N Long Eared, Little Brown, Tri Color and Indiana bat.
2. First aid and CPR training.
3. Master Logger Program-79 Loggers in program.
4. On-line training programs due to Covid.

Review of Social and Economic Assessment of Michigan's State Forest, 2019 by Forest Economist.

Performance Measure 10.3

Program Participants shall individually and/or through cooperative efforts involving *SFI Implementation Committees*, associations or other partners broaden the awareness of *climate change* impacts on forests, *wildlife* and *biological diversity*. Indicators:

10.3.1 Where available, monitor information generated from regional climate models on *long-term forest health, productivity and economic viability*.

N/A Conforms Exceeds O.F.I. Minor NC Major NC

Notes: Membership and attendance to State SIC meetings on 2/20/2020 and 8/19/2020. Review of Climate Change Sprint Team Action Plan. Climate change information is available on DNR [website](#) and details are documented within draft 2020 Forest Action Plan. References are also detailed within Michigan 2019 Forest Health Highlights Michigan Statewide Comprehensive Outdoor Recreation Plan, Terrestrial Invasive Species Management Plan, Parks and Recreation Division 2009-2019 Strategic Plan, Kirtland's Warbler Breeding Range Conservation Plan, Michigan's Climate Action Plan, Wildlife Division Strategic Action Plan 2016-2020 and Forest Resources Division Strategic Plan 2014-2018.

10.3.2 *Program Participants* are knowledgeable about *climate change* impacts on *wildlife, wildlife habitats* and *conservation of biological diversity* through international, national, regional or local *programs*.

N/A Conforms Exceeds O.F.I. Minor NC Major NC

Notes: Review of Climate Change information within Michigan 2019 Forest Health Highlights Michigan Statewide Comprehensive Outdoor Recreation Plan, Terrestrial Invasive Species Management Plan, Parks and Recreation Division 2009-2019 Strategic Plan, Kirtland's Warbler Breeding Range Conservation Plan, Michigan's Climate Action Plan, Wildlife Division Strategic Action Plan 2016-2020 and Forest Resources Division Strategic Plan 2014-2018 confirms very detailed and action-oriented system. Considerable resources are dedicated to evaluation and mitigation plans. Interviews with various personnel confirmed resource availability through internal and external sources.



Objective 11 Training and Education

To improve the implementation of *sustainable forestry* practices through appropriate training and education *programs*.

Performance Measure 11.1

Program Participants shall require appropriate training of personnel and contractors so that they are competent to fulfill their responsibilities under the *SFI 2015-2019 Forest Management Standard*. Indicators:

11.1.1 Written statement of commitment to the *SFI 2015-2019 Forest Management Standard* communicated throughout the organization, particularly to facility and woodland managers, and field foresters.

N/A Conforms Exceeds O.F.I. Minor NC Major NC

Notes: Review of evidence manual confirms Memo sent on September 23, 2014; TO: All DNR Staff; FROM: Keith Creagh, Director

SUBJECT: Statement of Commitment to Forest Certification

The commitment of the State of Michigan to forest certification is embodied in state law: NATURAL RESOURCES AND ENVIRONMENTAL PROTECTION ACT (EXCERPT) Act 451 of 1994

324.52505 Third-party certification that forestry standards satisfied; report. Sec. 52505.

(1) The department shall seek and maintain third-party certification that the management of the state forest and other state-owned lands owned or controlled by the department satisfies the sustainable forestry standards of at least 1 credible nonprofit, nongovernmental certification program and this part.

Certification is published on DNR [website](#).

11.1.2 Assignment and understanding of roles and responsibilities for achieving *SFI 2015-2019 Forest Management Standard objectives*.

N/A Conforms Exceeds O.F.I. Minor NC Major NC

Notes: Review of Michigan Department of Natural Resources Forest Resources Division Training by Position Guide-January 2020 confirms roles and responsibilities identified. Review of detailed set of Work Instructions provides guidelines for requirements. Forest Certification Coordinator maintains overall responsibility for program. Interviews, observations and document reviews during field sites by audit team confirmed knowledge of requirements by trained and qualified DNR personnel.

11.1.3 Staff education and training sufficient to their roles and responsibilities.

N/A Conforms Exceeds O.F.I. Minor NC Major NC

Notes: Review of Annual Training Plan for FY2020, applicators license for various personnel within audit scope of FMU's confirmed proper training. Interviews with personnel confirmed degrees from accredited forestry colleges and/or previous work experience. Field site observations by audit team confirmed personnel contained experience and training to implement forest management plans and activities. MIDNR provides training in techniques and methods for engagement with the public at various levels. While technical forestry skills are common and apparent during field site visits, other training programs provide opportunities such as 1) all state employees have access to the State of Michigan Learning Center which provides at least 6 different trainings on conflict resolution. Many employees have participated in one of these a longstanding 2-day course titled "Crucial Conversations"; and 2) the Department offers a number of leadership training opportunities which include material on communication, facilitation and conflict resolution. Other opportunities include the Supervisor Academy (which is required for all new supervisors), the Great Lakes Leadership Academy and Fit Leaders Academy.



11.1.4 Contractor education and training sufficient to their roles and responsibilities.

N/A Conforms Exceeds O.F.I. Minor NC Major NC

Notes: Review of all timber sale contracts contained requirements for qualified logging professionals. There is a formal system for training, testing, and assessing the work of timber marking contractors. Foresters providing contract forestry services must have a professional forestry degree, pass a written test, and take an orientation test. Road building and road maintenance are mostly done by personnel associated with the fire program, with assistance and direction from staff foresters. Road contractors are also working on forester-developed projects with follow-up reviews ensuring appropriate work, an approach that meets the requirement for sufficient training. Field observations by audit team confirmed sufficient training by contractors.

11.1.5 Program Participants shall have written agreements for the use of *qualified logging professionals* and/or *certified logging professionals* (where available) and/or *wood producers* that have completed training programs and are recognized as *qualified logging professionals*.

N/A Conforms Exceeds O.F.I. Minor NC Major NC

Notes: DNR timber sale contract specification 6.3 requires a MI SFI or WI FISTA qualified foreman (Qualified Logging Professional) to supervise logging operations on DNR timber sales. Audit Team review of timber harvests had an identified Qualified Logging Professional, as confirmed by information found on the "Pre-Sale Meeting" portion of the "Timber Sale Contract – Field Inspection Report". Interviews confirmed that foresters check the on-line databases maintained by the SFI Implementation Committees for Michigan and for Wisconsin as needed to confirm credentials. Auditors reconfirmed training records for randomly selected contractors.

Performance Measure 11.2

Program Participants shall work individually and/or with SFI Implementation Committees, logging or forestry associations, or appropriate agencies or others in the forestry community to foster improvement in the professionalism of wood producers.

Indicators:

11.2.1 Participation in or support of SFI Implementation Committees to establish criteria and identify delivery mechanisms for wood producer training courses and periodic continuing education that address:

- a. awareness of sustainable forestry principles and the SFI program;
- b. best management practices, including streamside management and road construction, maintenance and retirement;
- c. reforestation, invasive exotic plants and animals, forest resource conservation, aesthetics and special sites;
- d. awareness of responsibilities under the U.S. Endangered Species Act, the Canadian Species at Risk Act, and other measures to protect wildlife habitat (e.g., Forests with Exceptional Conservation Value);
- e. awareness of rare forested natural communities as identified by provincial or state agencies, or by credible organizations such as NatureServe, The Nature Conservancy, etc.
- f. logging safety;
- g. U.S. Occupational Safety and Health Administration (OSHA) and Canadian Centre for Occupational Health and Safety (CCOHS) regulations, wage and hour rules, and other provincial, state and local employment laws;
- h. transportation issues;
- i. business management;
- j. public policy and outreach; and
- k. awareness of emerging technologies.

N/A Conforms Exceeds O.F.I. Minor NC Major NC

Notes: Review of SIC Annual Survey Report, SIC meeting agendas and interviews with Forest Conservation and Certification Specialist confirm membership and attendance to MI SIC meetings on 2/20 and 8/19. Covid restrictions have impacted the normal schedule. Review of MI SFI SIC and WI FISTA wood producer core training program confirms all requirements a-k are met.



11.2.2 The *SIC*-approved *wood producer training programs* shall have a continuing education component with coursework that supports the current *training programs*, safety and the *principles of sustainable forestry*.

N/A Conforms Exceeds O.F.I. Minor NC Major NC

Notes: Review confirmed 4 hours of continuing education requirements per calendar year.

11.2.3 Participation in or support of *SFI Implementation Committees* to establish criteria for recognition of logger certification *programs*, where they exist, that include:

- a. completion of *SFI Implementation Committee* recognized logger training *programs* and meeting continuing education requirements of the training *program*;
- b. independent in-the-forest verification of conformance with the logger certification *program* standards;
- c. compliance with all applicable laws and regulations including responsibilities under the U.S. Endangered Species Act, the Canadian Species at Risk Act and other measures to protect *wildlife habitat*;
- d. use of *best management practices* to protect water quality;
- e. logging safety;
- f. compliance with acceptable *silviculture* and utilization standards;
- g. aesthetic management techniques employed where applicable; and
- h. adherence to a management or harvest plan that is site specific and agreed to by the forest landowner.

N/A Conforms Exceeds O.F.I. Minor NC Major NC

Notes: Michigan Master Logger Certification Program which is recognized by the Michigan SFI Implementation Committee.



Objective 12 Community Involvement and Landowner Outreach

To broaden the practice of *sustainable forestry* through public outreach, education, and involvement, and to support the efforts of *SFI Implementation Committees*.

Performance Measure 12.1

Program Participants shall support and promote efforts by consulting foresters, state, provincial and federal agencies, state or local groups, professional societies, *conservation* organizations, *Indigenous Peoples* and governments, community groups, sporting organizations, labor, universities, extension agencies, the *American Tree Farm System*® and/or other landowner cooperative *programs* to apply *principles* of sustainable forest management. Indicators:

12.1.1 Support, including financial, for efforts of *SFI Implementation Committees*.

N/A Conforms Exceeds O.F.I. Minor NC Major NC

Notes: Confirmed MIDNR's financial support by review of evidence within SFI Annual report. Confirmed participation by MIDNR in the MI SIC by review of meeting minutes showing participation by Forest Certification Specialist (attendee lists).

12.1.2 Support, individually or collaboratively, education and outreach to forest landowners describing the importance and providing implementation guidance on:

- a. best management practices;
- b. reforestation and afforestation;
- c. visual quality management;
- d. conservation objectives, such as critical wildlife habitat elements, biodiversity, threatened and endangered species, and Forests with Exceptional Conservation Value;
- e. management of harvest residue (e.g., slash, limbs, tops) considers economic, social, environmental factors (e.g., organic and nutrient value to future forests) and other utilization needs;
- f. control of invasive exotic plants and animals;
- g. characteristics of *special sites*; and
- h. reduction of wildfire risk.

N/A Conforms Exceeds O.F.I. Minor NC Major NC

Notes: The Michigan Landowners Guide was developed by the Michigan SFI Implementation Committee with support from MDNR. This guide, which is passed out to members and loggers for distribution to landowners, provides much of the information listed in a-h. Michigan DNR's public-facing website at [www. http://michigan.gov/forestry](http://michigan.gov/forestry) includes pages or links providing significant forest management information for landowners. Field offices have displays of brochures and pamphlets for public distribution.

12.1.3 Participation in efforts to support or promote *conservation* of managed forests through voluntary market-based incentive *programs* such as current-use taxation *programs*, *Forest Legacy Program* or *conservation* easements.

N/A Conforms Exceeds O.F.I. Minor NC Major NC

Notes: The DNR FRD administers the Michigan Commercial Forest Program, a tax incentive program for industrial and private landowners and Forest Legacy Program. Information is available to public through DNR website.



Performance Measure 12.2

Program Participants shall support and promote, at the state, provincial or other appropriate levels, mechanisms for public outreach, education and involvement related to sustainable forest management. Indicator:

12.2.1 Periodic educational opportunities promoting *sustainable forestry*, such as

- a. field tours, seminars, websites, webinars or workshops;
- b. educational trips;
- c. self-guided forest management trails;
- d. publication of articles, educational pamphlets or newsletters; or
- e. support for state, provincial, and local *forestry* organizations and soil and water *conservation* districts.

N/A Conforms Exceeds O.F.I. Minor NC Major NC

Notes: Covid restrictions for 2020 have impacted field tours and other in-person events. Review of DNR [website](#) confirms available information listed for activities, places, license purchase and requirements, education and safety, recreational use of state forest lands, educational trips, trails and references to educational documents for forest management activities. Public reviews are listed for all Year of Entry compartments with public reviews and comments encouraged. Maps of resources are available with user-friendly features. Resources are abundant and contact numbers for personnel are listed.

Performance Measure 12.3

Program Participants shall establish, at the state, provincial, or other appropriate levels, procedures to address concerns raised by loggers, consulting foresters, employees, unions, the public or other *Program Participants* regarding practices that appear inconsistent with the *SFI Standard principles* and *objectives*. Indicators:

12.3.1 Support for *SFI Implementation Committees* (e.g., toll-free numbers and other efforts) to address concerns about apparent nonconforming practices.

N/A Conforms Exceeds O.F.I. Minor NC Major NC

Notes: Inconsistent Practices Hotline number is posted on DNR [website](#). Interview with Forest Conservation/Certification Specialist and FMU personnel confirms no knowledge of complaints regarding forest management activities.

12.3.2 Process to receive and respond to public inquiries. *SFI Implementation Committees* shall submit data annually to *SFI Inc.* regarding concerns received and responses.

N/A Conforms Exceeds O.F.I. Minor NC Major NC

Notes: Inconsistent Practices Hotline number is posted on DNR [website](#). Interview with Forest Conservation/Certification Specialist and FMU personnel confirms no knowledge of complaints regarding forest management activities.



Objective 13 *Public Land Management Responsibilities*

To participate and implement sustainable forest management on *public lands*.

Performance Measure 13.1

Program Participants with forest management responsibilities on *public lands* shall participate in the development of *public land* planning and management processes. Indicators:

13.1.1 Involvement in *public land* planning and management activities with appropriate governmental entities and the public.

N/A Conforms Exceeds O.F.I. Minor NC Major NC

Notes: Since March, public meetings have been conducted virtually. Public input for Compartment Review is gathered through [website](#). MDNR continued to respond to logged-letters, legislative requests, email requests, and FOIA requests in 2020, though specific totals were not reported. Other social interactions include:

- Compartment reviews for Year of Entry 2021 were held in each Forest Management Unit.
- Over 230,000 followers on the DNR Facebook account, 45,000 on Instagram, and 8,200 subscribers on the DNR YouTube channel. • Over 40,000 Twitter followers with over 9,000 tweets on the general DNR Twitter feed, and over 8,400 followers with 2,100 tweets for the Upper Peninsula-specific feed.
- Issuance of forest-related press releases across numerous GovDelivery subjects including Forest planning, Private Forest lands, Urban and community forestry programs, Forest health, and Forest Marketing and Utilization Newsletter. Total GovDelivery subscriptions range from 500 to over 50,000 for forest-related topics.

In FY 19, MDNR continued to participate in significant stakeholder engagements, most notably in the decision-making process regarding state forest roads and the Forest Action Plan revision.

Thousands of routine inquiries, comments, complaints via email and telephone calls that are also received and respond to by District Forest Managers and Unit Managers, but these interactions are not comprehensively documented.

Records for Tribal correspondence is documented and maintained.

13.1.2 Appropriate contact with local stakeholders over forest management issues through state, provincial, federal or independent collaboration.

N/A Conforms Exceeds O.F.I. Minor NC Major NC

Notes: Review of [DNR website](#) contains links for Public Input on Forest Management Activities. Compartment review schedules are available. Each year, forest management recommendations are presented at open houses - informal sessions that give you the opportunity to speak with foresters, wildlife biologists and other resource professionals. Use the [map](#) to find information on upcoming timber sales, tree thinnings, prescribed burns and other management activities. You can simply type in an address to find out what's planned nearby. The map highlights actions that will occur in 2021, and is updated for each forest management unit one month before the open house. Current and past year information is also available in the map. Open house schedules are available on website.



Objective 14 Communications and Public Reporting

To increase transparency and to annually report progress on conformance with the *SFI Forest Management Standard*.

Performance Measure 14.1

A *Program Participant* shall provide a summary audit report, prepared by the *certification body*, to *SFI Inc.* after the successful completion of a certification, recertification or surveillance audit to the *SFI 2015-2019 Forest Management Standard*. Indicator:

- 14.1.1 The summary audit report submitted by the *Program Participant* (one copy must be in English), shall include, at a minimum,
- a description of the audit process, *objectives* and scope;
 - a description of substitute *indicators*, if any, used in the audit and a rationale for each;
 - the name of *Program Participant* that was audited, including its *SFI* representative;
 - a general description of the *Program Participant's* forestland included in the audit;
 - the name of the *certification body* and *lead auditor* (names of the *audit team* members, including *technical experts* may be included at the discretion of the *audit team* and *Program Participant*);
 - the dates the audit was conducted and completed;
 - a summary of the findings, including general descriptions of evidence of conformity and any nonconformities and corrective action plans to address them, opportunities for improvement, and exceptional practices; and
 - the certification decision.

The summary audit report will be posted on the *SFI Inc.* website (www.sfiprogram.org) for public review.

N/A Conforms Exceeds O.F.I. Minor NC Major NC

Notes: Review of SFI website confirms the 2019 Public Summary Report is available and all requirements of a-h are met.

Performance Measure 14.2

Program Participants shall report annually to *SFI Inc.* on their conformance with the *SFI 2015-2019 Forest Management Standard*. Indicators:

- 14.2.1 Prompt response to the *SFI* annual progress report survey.

N/A Conforms Exceeds O.F.I. Minor NC Major NC

Notes: Review of SFI 2019 Annual Report Survey confirms completion on 4/13/2020.

- 14.2.2 Record keeping for all the categories of information needed for *SFI* annual progress report surveys.

N/A Conforms Exceeds O.F.I. Minor NC Major NC

Notes: All categories of information for the annual report are covered by computerized record keeping systems (databases or reports) which are periodically updated. Confirmed by review of the 2019/2018/2017 Annual Progress Report and other documents, procedures, and systems.

- 14.2.3 Maintenance of copies of past survey reports to document progress and improvements to demonstrate conformance to the *SFI 2015-2019 Forest Management Standard*.

N/A Conforms Exceeds O.F.I. Minor NC Major NC

Notes: Interview with Forest Conservation and Certification Specialist confirms maintenance of past survey reports, observed within electronic folder. Previous Management Reviews are maintained on [website](#).



Objective 15 Management Review and Continual Improvement

To promote continual improvement in the practice of *sustainable forestry* by conducting a management review and monitoring performance.

Performance Measure 15.1

Program Participants shall establish a management review system to examine findings and progress in implementing the *SFI 2015-2019 Forest Management Standard*, to make appropriate improvements in *programs*, and to inform their employees of changes.

Indicators:

15.1.1 System to review commitments, *programs* and procedures to evaluate effectiveness.

N/A Conforms Exceeds O.F.I. Minor NC Major NC

Notes: Review of 2020 Forest Certification Management Review confirms requirements are met. Copies of report are maintained for public review on [website](#).

15.1.2 System for collecting, reviewing, and reporting information to management regarding progress in achieving *SFI 2015-2019 Forest Management Standard objectives and performance measures*.

N/A Conforms Exceeds O.F.I. Minor NC Major NC

Notes: Review of 2020 Forest Certification Management Review Report First Draft Report dated 2/20/20 confirms requirements are met. DNR website updated with [current monitoring reports](#), SFI Annual Audit Reports and other various reports used for reporting information on progress to FM standards.

15.1.3 Annual review of progress by management and determination of changes and improvements necessary to continually improve conformance to the *SFI 2015-2019 Forest Management Standard*.

N/A Conforms Exceeds O.F.I. Minor NC Major NC

Notes: Review of 2020 Forest Certification Management Review confirms requirements are met. Copies of report are maintained for public review on [website](#).

(End SFI Forest Management Checklist)



Appendix 3

Michigan Department of Natural Resources 2020 SFI Forest Management Public Summary Audit Report

Introduction

Michigan Department of Natural Resources of Lansing, Michigan has demonstrated conformance to SFI® 2015-2019 Standard and Rules, Section 2 – Forest Management Standard in accordance with the NSF certification process.

NSF initially certified Michigan DNR to the SFI Standard in 2005 and recertified the organization on November 9, 2010, October 11, 2013 and on October 2, 2015 (out of phase recertification). This report describes the 2020 recertification audit. This audit was designed to focus on all applicable indicators, performance measures and objectives to demonstrate conformance to SFI 2015-2019 Standards and Rules, Section 2-Forest Management Standard. The audit also included a review of previous efforts to resolve past non-conformances and opportunities for improvement.

The audit was performed by NSF on October 26-29, 2020 by an audit team headed by Shannon Wilks, SFI Lead Auditor/FSC Team Auditor, Beth Jacqumain FSC Lead Auditor/SFI Team Auditor, David White SFI/FSC Team Auditor and Kyle Meister FSC/SFI Team Auditor. Audit team members fulfill the qualification criteria for conducting audits contained in SFI 2015-2019 Standards and Rules, Section 9 - Procedures and Auditor Qualifications and Accreditation.

The objective of the audit was to assess conformance of the firm's SFI Program to the requirements of the SFI 2015-2019 Standard and Rules, Section 2 – Forest Management.

The scope of the audit included forest management operations. Forest practices that were the focus of field inspections included those that have been under active management over the planning period of the past 3 years. In addition, practices conducted earlier were also reviewed as appropriate (regeneration and BMP issues, for example), SFI obligations to promote sustainable forestry practices, to seek legal compliance, and to incorporate continual improvement systems were also within the scope of the audit. The audit reviewed central management and field practices at four of the fifteen Forest Management Units (FMUs): Atlanta FMU, Escanaba FMU, Newberry FMU and Traverse City FMU. The SFI Standard was used without modifying any requirements.

Several of the SFI Section 2 requirements were outside of the scope of Michigan Department of Natural Resource's SFI program and were excluded from the scope of the audit as follows:

- Indicator 2.1.3 involving planting exotic species
- Indicator 10.1.2 involving research on genetically engineered trees

Audit Process

The audit was governed by a detailed audit plan designed to enable the audit team to efficiently determine conformance with the applicable requirements. The plan provided for the assembly and review of audit evidence consisting of documents, interviews, and on-site inspections of ongoing or completed forest practices.

During the audit NSF reviewed a sample of the written documentation assembled to provide objective evidence of conformance. NSF also selected field sites for inspection based upon the risk of environmental impact, likelihood of occurrence, special features, and other criteria outlined in the NSF protocols. NSF selected and interviewed stakeholders such as contract loggers and other interested parties, and interviewed employees within the organization to confirm that the SFI Standard was understood and actively implemented.

The possible findings of the audit included conformance, major non-conformance, minor non-conformance, opportunities for improvement, and practices that exceeded the requirements of the standard.

Overview of Audit Findings

Michigan DNR was found to be in conformance with the standard. NSF determined that there were zero (0) non-conformances and two (2) opportunities for improvement:

- Indicator 1.3.1: Forestlands converted to other land uses shall not be certified to this SFI 2015-2019 Forest Management Standard. This does not apply to forestlands used for forest and wildlife management such as wildlife food plots or infrastructure such as forest roads, log processing areas, trails etc.
Finding: 347-acre Groveland Mine (Dickinson County) and 169 Acre 7 Mile Pit (Crawford County) leased for solar development have not been excluded from SFI Certified Lands. Interviews with Forest Conservation and Certification Specialist confirms no activity has been conducted on these parcels, planning phase only.



- Indicator 2.1.1: Documented reforestation plans, including designation of all harvest areas for either natural, planted or direct seeded regeneration and prompt reforestation, unless delayed for site-specific environmental or forest health considerations or legal requirements, through planting within two years or two planting seasons, or by planned natural regeneration methods within five years.
Finding: Review of Forest Treatment Proposal (FTP) for Compartment 90 Stand 22 (38.8) acres does not contain comments regarding non-compliance to 2-year regeneration requirement due to Environmental Considerations. Harvesting was completed in 2019; Burning is planned in Spring 2021, Trenching planned for late 2021 but most likely 2022 and planting in April/May 2023 which is beyond the 2-year requirement but within the exception for Environmental Consideration.

These findings do not indicate a current deficiency, but served to alert Michigan DNR to areas that could be strengthened or which could merit future attention.

NSF also identified the following areas where forestry practices and operations of Michigan DNR exceed the basic requirements of the standard:

- Indicator 5.4.1: Provide recreational opportunities for the public, where consistent with forest management objectives.
Finding: Michigan DNR's Program is exceptional by providing an extensive range of quality recreational activities within their forests for all. Observations during the 2020 audit confirm that recreational trails of all types are abundant, well maintained and handicapped accessible. Tremendous opportunities for year-round recreational opportunities are provided including camping, fishing, hunting, off-road vehicle (ORV), ATV and motorcycle riding, snowmobiling, skiing, cross-country skiing and hiking. Recreational opportunities provide exposure to states resources and provide benefits for local/state economies.
- Indicator 11.1.3: Staff education and training sufficient to their roles and responsibilities.
Finding: MIDNR provides training in techniques and methods for engagement with the public at various levels. While technical forestry skills are common and apparent during field site visits, other training programs provide opportunities such as 1) all state employees have access to the State of Michigan Learning Center which provides at least 6 different trainings on conflict resolution. Many employees have participated in one of these a longstanding 2-day course titled "Crucial Conversations"; and 2) the Department offers a number of leadership training opportunities which include material on communication, facilitation and conflict resolution. Other opportunities include the Supervisor Academy (which is required for all new supervisors), the Great Lakes Leadership Academy and Fit Leaders Academy.

General Description of Evidence of Conformity

NSF's audit team used a variety of evidence to determine conformance. A general description of this evidence is provided below, organized by SFI Objective.

Objective 1 Forest Management Planning

To ensure forest management plans include long-term sustainable harvest levels and measures to avoid forest conversion.

Summary of Evidence: *Technical infrastructure and documented management plans with associated inventory data and growth models provided evidence of compliance. Auditors also reviewed the following evidence to support conformance: Progress on the Regional State Forest Management Plans targeted for 2021, 2008 Michigan State Forest Management Plan with 2014 Amendments, Forest Resources Division Strategic Plan 2019-2023, Kirtland's Warbler Operational Plan, Kirtland's Warbler Breeding Range Conservation Plan, Michigan Comprehensive Trails Plan, Parks and Recreation Strategic Plan 2009-2019, Michigan's Terrestrial Invasive Species State Management Plan, Michigan DNR Wildlife Division Strategic Plan 2016-2020, Fisheries Division Lake and River Plans, Compartment Plans for all compartments visited, plans for Ecological Reference Areas, Work Instructions, Forest Treatment Proposals, Timber Sale Contracts, Timber Sale Inspection records and many other plans supporting cover types, habitat management and enhancement, conservation, and recreation.*

Objective 2 Forest Health and Productivity

To ensure long-term forest productivity, carbon storage and conservation of forest resources through prompt reforestation, afforestation, minimized chemical use, soil conservation, and protecting forests from damaging agents.

Summary of Evidence: *Reviews of records and plans, interviews with personnel and field observations were utilized to confirm compliance. MIDNR has a comprehensive system of plans, work instructions, training and guidelines that are utilized to implement sustainable forest practices.*



Objective 3 Protection and Maintenance of Water Resources

To protect the water quality of rivers, streams, lakes, wetlands and other water bodies through meeting or exceeding best management practices.

Summary of Evidence: Audit team reviewed documented Best Management Guidelines, monitoring reports and field sites to confirm compliance. Field site observations included systematic process of protecting water quality through use of training, monitoring and ground application of BMP's within forest management practices.

Objective 4 Conservation of Biological Diversity

To manage the quality and distribution of wildlife habitats and contribute to the conservation of biological diversity by developing and implementing stand- and landscape-level measures that promote a diversity of types of habitat and successional stages, and the conservation of forest plants and animals, including aquatic species, as well as threatened and endangered species, Forests with Exceptional Conservation Value, old-growth forests and ecologically important sites.

Summary of Evidence: Review of field sites, written plans/policies and interviews with trained personnel confirmed compliance. Detailed strategic plans were implemented on ground with active monitoring and public input. Credible research and planning were demonstrated to implement successful strategies for the removal of Kirtland's Warbler from Endangered Species List. Other examples of habitat management and conservation are documented within plans.

Objective 5 Management of Visual Quality and Recreational Benefits

To manage the visual impact of forest operations and provide recreational opportunities for the public.

Summary of Evidence: Review of field sites and observation of recreational facilities confirmed MIDNR manages resources for multiple use and various stakeholders. Excellent examples of recreation for all citizens were observed. Harvest sites were managed according to documented guidelines and within Best Management Practices.

Objective 6 Protection of Special Sites

To manage lands that are geologically or culturally important in a manner that takes into account their unique qualities.

Summary of Evidence: Review of Work Instructions, Compartment Review Plans, GIS system for cataloging and identification and documented use of Natural Heritage and Archaeological databases confirm compliance. Personnel were trained and knowledgeable about requirements and use of resources to protect unique features.

Objective 7 Efficient Use of Fiber Resources

To minimize waste and ensure the efficient use of fiber resources.

Summary of Evidence: Review of contracts and field sites confirmed compliance. Field site observations confirmed efficient use of resources during harvesting activities. Sound harvest techniques and adherence to Best Management Practices was observed.

Objective 8 Recognize and Respect Indigenous Peoples' Rights

To recognize and respect Indigenous Peoples' rights and traditional knowledge.

Summary of Evidence: Review of documented records of correspondence, Division Tribal Coordinators and detailed Work Instruction guidelines provides evidence of compliance with 2007 Consent Decree.

Objective 9 Legal and Regulatory Compliance

To comply with applicable federal, provincial, state and local laws and regulations.

Summary of Evidence: Review of MIDNR infrastructure confirms regulations are available to personnel and public. Comprehensive law enforcement records/reports, public search of internet and field site observations by auditors confirmed compliance. No regulatory actions or pending issues was observed.

Objective 10 Forestry Research, Science and Technology

To invest in forestry research, science and technology, upon which sustainable forest management decisions are based and broaden the awareness of climate change impacts on forests, wildlife and biological diversity.

Summary of Evidence: Review of multiple documents, agendas and strategic plans confirm use of research from credible organizations in development of climate change impacts on management activities. Interviews with personnel confirmed membership into various organizations including Michigan SFI SIC Committee.



Objective 11 Training and Education

To improve the implementation of sustainable forestry practices through appropriate training and education programs.

Summary of Evidence: Review of training guidelines, topics and records confirmed aggressive approach utilized in determining training requirements. Evidence of successful results were observed during field site audits and ground observations of management activities.

Objective 12 Community Involvement and Landowner Outreach

To broaden the practice of sustainable forestry through public outreach, education, and involvement, and to support the efforts of SFI Implementation Committees.

Summary of Evidence: Review of public information available on MI DNR website confirms significant resources are dedicated to providing outreach to all stakeholders. Pandemic has impacted personal interactions, but more than adequate resources are available for user groups.

Objective 13 Public Land Management Responsibilities

To participate and implement sustainable forest management on public lands.

Summary of Evidence: Review of MIDNR forest management activities confirm public input is major part of development and implementation. Compartment Review process is well publicized and avenues are available for comments and input.

Objective 14 Communications and Public Reporting

To increase transparency and to annually report progress on conformance with the SFI Forest Management Standard.

Summary of Evidence: Review of SFI website confirms SFI Public Summary is available from previous audit. Review of MIDNR website confirms previous audits are available for public review.

Objective 15 Management Review and Continual Improvement

To promote continual improvement in the practice of sustainable forestry by conducting a management review and monitoring performance.

Summary of Evidence: Review of agenda and notes from internal audit and management review meeting confirmed compliance. Detailed records are maintained with actions to address non-conformances identified during internal and external audits. Interview with personnel confirmed knowledge of process and guidelines are documented within Work Instructions.

Relevance of Forestry Certification

Third-party certification provides assurance that forests are being managed under the principles of sustainable forestry, which are described in the Sustainable Forestry Initiative Standard as:

1. Sustainable Forestry

To practice *sustainable forestry* to meet the needs of the present without compromising the ability of future generations to meet their own needs by practicing a land stewardship ethic that integrates *reforestation* and the managing, growing, nurturing and harvesting of trees for useful products and *ecosystem services* such as the *conservation* of soil, air and water quality, carbon, *biological diversity*, *wildlife* and *aquatic habitats*, recreation and aesthetics.

2. Forest Productivity and Health

To provide for regeneration after harvest and maintain the productive capacity of the forest land base, and to protect and maintain *long-term* forest and soil *productivity*. In addition, to protect forests from economically or environmentally undesirable levels of wildfire, pests, diseases, *invasive exotic plants and animals* and other damaging agents and thus maintain and improve *long-term* forest health and *productivity*.

3. Protection of Water Resources

To protect water bodies and *riparian areas* and to conform with forestry *best management practices* to protect water quality.

4. Protection of Biological Diversity

To manage forests in ways that protect and promote *biological diversity*, including animal and plant species, *wildlife habitats*, and ecological or natural community types.

5. Aesthetics and Recreation

To manage the visual impacts of forest operations, and to provide recreational opportunities for the public.



6. Protection of Special Sites

To manage lands that are ecologically, geologically or *culturally important* in a manner that takes into account their unique qualities.

7. Responsible Fiber Sourcing Practices in North America

To use and promote among other forest landowners *sustainable forestry* practices that are both scientifically credible and economically, environmentally and socially responsible.

8. Legal Compliance

To comply with applicable federal, provincial, state, and local *forestry* and related environmental laws, statutes, and regulations.

9. Research

To support advances in sustainable forest management through *forestry* research, science and technology.

10. Training and Education

To improve the practice of *sustainable forestry* through training and education *programs*.

11. Community Involvement and Social Responsibility

To broaden the practice of *sustainable forestry* on all lands through community involvement, socially responsible practices, and through recognition and respect of *Indigenous Peoples’* rights and *traditional forest-related knowledge*.

12. Transparency

To broaden the understanding of forest certification to the *Fiber Sourcing* Standard by documenting certification audits and making the findings publicly available.

13. Continual Improvement

To continually improve the practice of forest management, and to monitor, measure and report performance in achieving the commitment to *sustainable forestry*.

14. Avoidance of Controversial Sources including Illegal Logging in Offshore Fiber Sourcing

Applies only to the SFI 2015-2019 Fiber Sourcing Standard

To avoid wood fiber from illegally logged forests when procuring fiber outside of North America, and to avoid sourcing fiber from countries without effective social laws.

Source: Sustainable Forestry Initiative® (SFI) Standard, 2015–2019 Edition

For Additional Information Contact

Daniel Freeman	Michelle Matteo	Keith Kintigh
NSF Project Manager	NSF Forestry Program Manager	Forest Conservation and Certification Specialist-Michigan Department of Natural Resources, Forest Resources Division
789 N. Dixboro Road Ann Arbor, MI 48105	789 N. Dixboro Road Ann Arbor, MI 48105	Traverse City Customer Service Center 2122 M-37 Traverse City, MI. 49685
734-214-6228	413-265-3714	989-619-2296
dfreeman@nsf.org	mmatteo@nsf.org	kintighk@michigan.gov



Appendix 4

Field Site Notes

Michigan DNR-Newberry FMU SFI FM Recertification Audit-Tour 1

October 27, 2020-Shannon Wilks, SFI Lead Auditor/FSC Team Auditor

All Indicators except 2.1.3 and 10.1.2

Attendees

Keith Magnusson, Unit Forester -MI Tech

Matt Amos, Forester Mi Tech

Lester Livermore, Forester 2 years MI Tech

PJ Costa, Fire Supervisor-12 years Marine Corps

Keith Kintigh, Forest Conservation and Certification Specialist

Cutting Edge Forest Products-Interviews: Roger Peake, permission to use name in confidential section. Woods foreman-23, SFI Trained (2) qualified in job. 2 Spill kits on job, every machine has fire extinguishers, first aid kit on job, CPR trained-All people job (5) plus drivers. Conduct safety meetings-monthly, topics provided by insurance company. Confirmed weekly monitoring by DNR personnel. Observed hard hats and high vis clothing on operator outside of machinery. No personnel observed on ground. No trucks present during audit for review of documents. No BMP issues, trash or hydrocarbon spills observed on any field sites. Adequate utilization of fiber and no damages observed to residual stand.

Newberry FMU-Luce and Chippewa Counties. 350 K acres with Fire Boundary of 660k acres. 30 Mikes of Lake Michigan shoreline. Over 200 inches annual snowfall in northern area. Borders Hiawatha National Forest and National Wildlife Refuge. Summer tourism with tremendous increase due to Covid. Park pass waived this year due to pandemic. Staff 3 of 3 foresters, District forester and 2 fire personnel and one admin. Timber program-4K acres per year. Average 40 sales per year, 2019-2019 but larger acreage. Upcoming year planned 29 sales. Typically, 3-year contracts. Contract preparation work due to workload. Local contract performs a lot of work. Financial was \$3.8MM in last fiscal year. Pine is majority of work. Seedlings are purchased from PRT Nursery in Brighton (going from bare-root to plugs). Plugs have better survival rates. Primarily red and jack pine. All native stock. Seeds provided by DNR. Fire program challenges with staffing qualifications during certain time of year. Recruit from other divisions. Recreation large component-275 miles snowmobile trails, 156 miles ORV trails and hiking trails. Grant sponsors maintain trail grooming. Permits for use-land, research and other events. Road and Bridge-100 miles primary roads for logging and public use. Funding for capital projects-\$700k over past three years for 7 different projects. Annual operating is around \$5k. Buildings and facilities-upgraded lighting to LED. Governor carbon sequestration for mass-timber (CLT). Plans to construct for housing of staff and visitor center-in the engineering phase. Challenges with Covid-performing duties with stay-at-home orders. Utilization of technology and Microsoft Teams. Lack of collaboration with personnel. Currently 70 sales open and larger majority are purchased by largest suppliers. Active timber sale trespass on district.

All harvest activities observed contracts with requirements for SFI Trained Foreman on job, BMP and regulatory compliance. Rutting guidelines and protection of streams. Soil protection with rutting restriction guidelines. Maps with denoted harvest areas, trails, roads-open/closed, gates and boundaries. SFI training is verified by observation of database annually and periodically throughout year. Continuing education classes are on-line. Pre-sale checks for T&E, archaeological, special or cultural occurrences and other required monitoring are performed within VMS checklist process for each sale. No complaints or regulatory violations. No observation of BMP violations within any field sites observed. Utilization of fiber and stump heights were within acceptable range. Minimal damage to residual trees was observed.

1. Compartment 101; Stands 88 and 89-Birdshot Mix (SFI Mandatory Site). Partially harvested not complete; Over-story removal with retention. Compartment review change in prescription for snowshoe hare habitat enhancement. Approvals observed by wildlife biologist, fisheries biologist, parks and recreation, unit manager. Road Berms. Leave hemlock, cherry, yellow birch and sub-merchantable species as retention and half white pine (leaving retention of variable sizes). Change in prescription to hinge-cut (leave tree attached to stump for drumming logs-15-20 larger spruce, fir and/or white pine (mixture preferred) based on snowshoe hare guidelines. Hinge-cut should be located throughout stand and close to edges (or other adjacent conifers). Construct 2-3 brush piles near adjacent Q-types (cover type of mixed conifer) in southern portion of stand 88. Brush piles should be 6-9 feet tall and at least 1 tree length. Ideal to extend into adjacent stand and contain whole or nearly whole trees vs tops. Observed Timber contract-lump sum for 108.7 acres in Compartment 101. Observed SFI Trained Logger requirements and compliance with BMPs and regulations. Land was purchased by game-fund dollars, which facilitated habitat by wildlife biologist. \$1.50 from every game license fee is utilized within game fund for designated deer management projects since early 1920s-30s. Target regeneration of aspen, red maple, spruce, white pine and cherry. Stands 1-4, stands 1, 3 and 4 have been harvested (payment unit). Stand 2 not been started. Regeneration monitoring will be performed after 3 growing season years from harvest. Entered into MiFi as monitoring treatment with targeted date to alert at fiscal year. Observed green tree retention of cherry, spruce and maples. Observed aspen, spruce and balsam fir regeneration.



2. Compartment 90-(38.8 Acres) Stand 22; Struggle Bus (SFI Mandatory Site). Final harvest red pine with prescription burn. Site not burned at time of audit. Burn plan in progress to reduce slash for trench (exposing bare soil)/plant. Review of Forest Treatment Proposal (FTP) confirms burning and planting of red pine plugs. Observed pockets of aspen-sale completed in Dec 2019. Planned burning in spring 2022, trenching planned for late 2021 but most likely 2022 and planting 2023 season. Start time of regeneration after timber sale completion. FY2020 harvest completion, burning planned for FY2021, Trenching planned for FY2022 and planting within 2023. Seedlings have to be ordered 1.5 years in advance. Question are within guidance of SFI reforestation standard are time clock. Interview confirms environmental site considerations are within standard.



3. Compartment 28 (85 Acres)-Stands 36, 37, 40, 43, 57 and 58. Sleeper Lake (SFI Mandatory Site). Closed sale. Temporary road beaming, road improvements and portable bridge. Observed final inspection with no issues identified on 6/23/20. Interim inspections/monitoring observed dating back to 3/30/18. Observed SFI Trained Logger requirements and compliance with BMPs and regulations with Timber Contract dated 7/9/18. Observed Timber Sale Contract-Field Inspection Reports with verification of qualified logging professional-Keith McNamara. Portable bridge on site. Removal planned to prevent unauthorized access to sensitive areas. Wet road conditions and soft areas have prevented the removal. Observed stand 43/Payment unit 3. Harvest cut with 200-foot buffer (painted red) adjacent to Little Dawson Creek-temporary bridge with MI DEQ permit. Natural Regeneration planned on harvest cut area. Treatment planned in VMS for monitoring at 3 years after completion. Dates may move due to bridge removal. Shelterwood harvested in payment units 6 and 7. Road berm has not been completed due to temporary bridge still in place. Green tree retention observed. Aspen, spruce balsam and cedar primary species for regeneration. Payment unit 4- Shelterwood removal of red and white pine with target basal area of 50-60 BA. Includes 200-foot buffer. Dominant red and white pines observed.



4. Compartment 13 (256 Acres)-Stands 24, 33, 47 and 48; East Side Pine (SFI Mandatory Site). Over-story removal/final harvest-recently completed. Additional scarification work done on seed tree stand last year. Temporary berms and road maintenance/access observed. ORV trail, dog sled trails and high use recreational area. Stand 47/Payment Unit – leave 20 BA pine and oaks for regeneration. Red pine leave trees painted green. Scheduled regeneration check in 3 years. Oak left at request of wildlife biologist for mast producing species. Pine trees retained were undamaged and of dominant quality. Scarification to help assist with natural regeneration at minimized use of chemicals for site preparation spraying,



5. Compartment 14/15 (109.8 Acres)-Point Line Pine-Active red pine final harvest. Timber Sale Contract-Field Inspection Reports with verification of qualified logging professional-checked by SFI database. Inventory scattered red pine with 40-60 BA with no regeneration within understory. Scattered pines left for bird perches and wildlife. Regeneration of white, red and jack pine observed in harvested areas. Good observation of utilization and low stump heights. Payment units 1 and 2 observed. Harvesting in unit one completed. No harvesting activity day of audit. Retention island observed adjacent to stands and country road. ORV (Off Road Vehicle) recreation trail.



6. Toothpick Pine-Compartment 19- Stand 27 74 acres harvest. Jack and a red Pine mixed. Checkerboard to mix age diversity. Retained pockets/islands left and observed. Regeneration planned for Jack Pine based on historical stand and spills suited for Jack Pine. Active harvesting job- Cutting Edge-SFI Trained.



7. Compartment 21 ((64 Acres)-Stand 33; Blood Donor Pine-Fall herbicide prescription. Observed FTP for prescription burn and reduce slash and site prep for planting. Observed Pesticide Application plan for aerial release of deciduous tree sprouts. Rodeo, Element 4 and TA-39 (surfactant). Completed in September 2020. Notice posted on equestrian trail to warn users of helicopter activity. Hamilton Helicopters-Applicator License #030043. Timber Management Specialist contains pesticide applicator license and was present onsite during application. Contractor uses chemicals provided by DNR. Applicators license verified by supervisor on job- C001190032. Observed scattered red pines along equestrian trail.





Michigan DNR-Newberry FMU SFI/FSC FM Recertification Audit-Tour 2

October 27, 2020-Beth Jacquain, FSC Lead Auditor/SFI Team Auditor

Name	Feature of interest	Notes
Hung Honda Hardwoods	May be active during audit. Northern hardwood management including re-opening of closed roads and use of a snowmobile trail and high use forest road.	<p>Logger interview. 1st aid kit, spill kit, and fire extinguisher confirmed. Contract and contract map in hand (literally in his pocket folded up with notes). No hauling trucks present for certified fiber documentation review. Michigan Logger Insurance Agency inspections monthly and after Covid-19 occasionally once every 2 months. Logger was a MLAI safety award winner several years ago.</p> <p>52.8 acres examined within a total 199-acre treatment area. Selection harvest with group selection for regeneration harvests. Gaps and regeneration not mapped/monitored. All blocks are Upland Mixed Forest northern hardwood type with maple, beech, birch dominants. Encloses the MWR research site described below. Marked orange to cut. Snowmobile trail bordering, trail maintenance required during sale which entails slash clearing and trail clean and free of debris. Signage required to be placed by logger at entry and exit points of the trail where intersecting with the active harvest area.</p> <p>All sales have, unless otherwise specified:</p> <ul style="list-style-type: none"> • MI DNR Timber Sale Contract with standardized section (no versioning) • “Compartment Review Presentation” with standardized sections covering FM Standard related requirements and also maps of “Cover Type and Treatments”, “Stand Boundaries”, and “Special Conservation Areas & Site Conditions” • Timber Sale Contract – Field Inspection Report with “Verification of Qualified Logging Professional” including year of the permit in which the qualification was verified <p>All sales boundary paints match contract specifications unless otherwise specified.</p>
MWR – Research site	MSU hardwood regeneration project.	<p>Removal of advance regeneration (beech/ironwood/maple and non-tree competing vegetation (Rubus spp.) via herbicide in order to promote seed-origin tree regeneration. Newberry FMU, Comp 48, Stand 5 (12.5 acres to spray in patches). FTP C42-918. Research site established in cooperation with Michigan State University, “Silvicultural approaches for promoting diversity and sustainability in Michigan’s northern hardwood forests” (2015). Management activities reviewed were 2020 spring spray of glyphosate and triclopyr followed by 2020 summer scarification on 12.7 acres. Same forest type as described above. Experiment designed to examine common issues with regenerating desirable northern hardwood species in areas with a legacy of selection harvest, browsing by deer, and potential issues with competing vegetation. The other significant challenge being examined is restoring northern hardwood forests that have been degraded by beech bark disease that resulted in extensive suckering and monocultures of beech saplings in the understory.</p> <p>Gaps were 0.5 or 1.0 acres and mapped. This is part of a larger study summarized here, https://www.canr.msu.edu/news/preserving-hardwood-diversity-through-new-management.</p> <p>Documents:</p> <ul style="list-style-type: none"> • Pesticide Application Plan (42048005 Patch Cuts) and executed copy of records • PAP Map identifying water sources for the MWR Spray Site was provided and reviewed. • Forest Treatment Proposal with MSU provided (FTP C42-918 MWR Camp 7 Road). • Hardwood Regeneration Proposal (MSU, Walters and Roloff, 2015)
Camp 7 Gravel Pit	Luce County cooperative projects –	“Landing Zone” project done with Fire Manager and 911 staff. Established pre-existing cleared areas labelled landing zones (LZ). These LZs were numbered and mapped along with 911 Trail Numbers; ORV/ATV/snowmobile trails; all mapped road types including



	Road improvements and Heli Pad.	identification of available but poor forest roads; and streams and water bodies. LZs to serve as rescue sites to address regular accidents in the area. Effort to facilitate and coordinate emergency responses to trail accidents. Necessary permit documents for designated LZ at the Camp 7 Gravel Pit was provided. Discussions: Accident prevention and management efforts enacted over the years
Warn Winch Woods	SFI Mandatory. Hardwood sale and forest with post Beech Bark Disease impacts.	Retention left all hemlock & balsam fir recommendation wildlife biologist said keep conifers hemlock. Also retained super-canopy white pine. For more site details see Timber Sale Contract and Compartment Review Presentation. Roads discussion: Spending budgeted road monies
Halifax GEM & Lunch	Grouse management area. Wildlife plantings, gates, etc.	Halifax Grouse Enhanced Management Site (GEM), established 2015 to promote ruffed grouse hunting and hunter walk-in access to intensively managed grouse habitat. One of many GEMs developed in the UP. See https://www.michigan.gov/dnr/0,4570,7-350-79119_79147_81529_81531---,00.html for GEM sites information. Designed to provide high quality hunting opportunities and grouse habitat, wildlife viewing opportunities and help support local economies. Harvests follow standard MiDNR timber sale procedures and documentation. Overall area about 2693 acres. Aspen types comprise 1,393 acres of the GEM (Appendix 2) while other cover types present include northern hardwoods, lowland conifer (including some cedar and hemlock stands), lowland types along creeks and smaller amounts of spruce, fir and red pine. Staggered harvesting years to create a mosaic of grouse & wood cock habitat. Forest management done under the framework of the “Wildlife Division Management Plan for the Halifax Grouse Enhanced Management Site” (GEM). 5 parking lots for access and closed logging roads for non-motorized (walking) access. Public outreach being used to promote the area, as well as direct visitors to the site. See Halifax GEM Management Plan for detailed management history and scheduling. Discussion: Small logger sales opportunities
M-123 Ridges	Example of use of crane mats.	Mats used to access ridge of jack pine stand for harvest. Once mats were removed could not access for standard scarification but regeneration was abundant without it. Harvest done 2017. Naturally seeded in within 2 years.
Sleeper Lakes	Wildfire recovery. Natural regen.	Reviewed natural regeneration and restoration of fire lines from the Sleeper Lake Fire. This fire covered 18185 Acres,8-27-2007. Plan includes management for maintenance and enhancement of HCV attributes and monitoring. McMahon and Sleeper Lakes ERA Plan includes details. High Conservation Value (HCV) Attributes of the area are: <ul style="list-style-type: none"> • The McMahon and Sleeper Lakes are considered a largely intact and functional landscape. • Part of a large landscape level forest with minimal road density and management activity. • The Sleeper Lake patterned fen ERA (1,443 acres) is adjacent to the No Muskeg for Old Men ERA (5,138 acres); together they cover over 10 square miles. • Two-Hearted Natural River, with its associated HCV area buffer, is adjacent to the McMahon Lake patterned fen ERA. The McMahon Lake ERA is encompassed by the McMahon Lake Strangmoor non-dedicated natural area – a special conservation area (SCA). Threatened and endangered species found in within these ERAs include yellow rail and common loon. Moose have been collared here in 1995. Discussions: HCV, invasives, training, wildfire, prescribed burning.
Dollarville Dam	Hunter access/duck blind project,	C104-29. ADA-accessible duck blind. Seeding wild rice project proposal for seeding wild rice near the duck blind that was built by DNR staff. FTP for Invasive treatment of



	phragmites control, and fisheries management.	Phragmites with glyphosate and imazapyr (application records provided). Discussions: invasive treatments, multi-agency cooperative projects.
Teaspoon Timber sale	Partially harvested. Lowland conifer management and crane mat usage.	This was a site used for testing the new Tcruise program (new taper volumetric program). Contractor for the site coordinated with adjacent private landowner. Used crane mats to cross over road ditching. Documentation included Permit for county road access. Observed snags and retained trees. This contract was for 4 years, longer than typical to accommodate needs for frozen ground conditions under variable past issues (not freezing to meet specified conditions for site protections). Standard visual buffer for public roads was not retained in this case accommodate County request to expose public road to full sunlight (road freezing consideration).
Canada Lakes	Harvest with multi-recreational use and long-term retention.	Trail head for ORV, cycle, snowmobile, ski trail. Ski trails mostly on timber trails. Red pine plantations surrounding this multi-use parking area. Recent activity was red pine plantation harvest to be followed by spray, scarification and planting. Multi-agency review documentation reviewed. Permit reviewed PRDEUP2020-007, "Event Application/Permit To Use State Land for 2020" for Newberry High School cross-country event. Planning aerial spray and replant to red pine. Retention in patches to keep open for aerial spray. ORV trail Rexton cycle trail. Signs up by logger and maintained slash free during harvest.
Name	Feature of interest	Notes
Section 34 – Timber Trespass	Illegal firewood. Suspects apprehended with FRD and LD cooperation.	<p>Timber trespass case. DNR staff worked in cooperation with a larger case and detection of a long-term, ongoing issue with firewood theft in the area. Memo dated November 28, 2018.</p> <p>“SUBJECT: Unauthorized Cutting, Removal Or Damage Of Timber, Minerals, Or Other State Property</p> <p>POLICY: Unauthorized cutting, removal or damage of timber, minerals or other state property from state lands is prohibited by law. All employees shall be alert for trespass involving state property, and every effort will be made to pursue remedial measures.</p> <p>PURPOSE: NREPA (Act 451 of 1994, as amended), Part 21, Subpart 15 defines as unlawful, without written permission, for a person to enter upon, or induce or direct any person to enter upon, any state-owned lands, and cut, remove, or injure, or induce or direct any other person to do so, any “logs, posts, poles, trees, shrubs or trees, or any other forest product buildings, fences, improvements, sand, gravel, marl, or other minerals, or other property belonging to or appertaining to state-owned land.” In addition, no person shall knowingly accept or receive by purchase any such product.</p> <p>Depending on the number of repeat violations, and the valuation of damages, such violations may be categorized as a state civil infraction, misdemeanor, or felony.</p> <p>Also reviewed MIDNR Timber Trespass report. Role of DNR foresters was valuation/appraisal and will testify in court regarding methodology for these in November 2020.</p>



Michigan DNR-Traverse City FMU SFI/FSC FM Recertification Audit-Kalkaska Tour

October 27, 2020-Kyle Meister, SFI and FSC Team Auditor

1. Compartment 41; Regeneration Site- helicopter spraying site & site prep (trenching). Reviewed application plan (item 8 is where any concerns on RTE species or sensitive features would be documented: none on this site) and maps, pre-activity neighbor notifications, safety signage, PPE and emergency response plan. Site was trenched and treated with herbicide. Will be replanted with red pine in spring of 2021.
2. Compartment 168; Bird Lake- Created access to the lake. Resource Damage Report (RDR) site. Reviewed RDR (damage from ORVs) and harvest prescription. Site is a complex of jack pine and aspen stands, planted red pine, and mixed hardwood-pine. Checks for special or cultural sites yields no special or sensitive conservation sites/species. Interview with fire staff on how RDR sites are prioritized and how many treated per year. Discussion with staff on how site was made into lake access point rather than to block access.
3. Compartment 153; 153 Thayer Block- active/closed timber sale. Mixed aspen, hardwood, and pine. SCA due to cold water stream and lake and riparian area, and HCVA due to natural river and species of concern.
4. Compartment 150-Fletcher Sharptail RX Area- Large opening complex management. 160-acre blocks managed through rotation of prescribed burns for Sharptailed grouse habitat. Neighbors notified of burn, which has happened in prior years.
5. Compartment 148; Fletcher KW Block 61-143-18-01- active or recently closed t. sale; KW stands with extensive experimental cultivation work. Site was scarified through disking after harvest. Jack pine tops with cones left onsite and integrated into soil through scarification to determine if regeneration and density can meet conditions necessary for Kirtland's Warbler. Adjacent stands upwind were red pine dominated, which should serve as a control for ensuring that regeneration (or failure) is likely the result of jack pine tops left onsite. Inspection of machinery onsite; no issues with persistent leaks.
6. Compartment 138; Air Borne Oak- Complex of upland/lowland conifer with minor components of hardwood. Classified as single-tree selection to favor quality white pine residuals and establish white pine regeneration. Minor species retained include white spruce, black spruce, red maple, and American beech. Slightly larger openings created in lower area due to removal of larger, forked white pines and aspen. Discussion on regeneration checks and possible next entry options.
7. Compartment 120; Bogged Down Mix 61-129-17-01- Complex of upland/lowland conifer with minor components of hardwood. Classified as single-tree selection to favor quality white pine residuals and establish white pine regeneration. Minor species retained include white spruce, black spruce, red maple, and American beech. Slightly larger openings created in lower area due to removal of larger, forked white pines and aspen. Discussion on regeneration checks and possible next entry options.
8. Compartment 102; Shoot Chute Mix 61-138-17-01- Active Timber Sale. Red pine thinning, aspen clearcut, and single-tree selection of northern hardwood stand. Red pine area had abundant oak and red maple in the understory and adjacent stands were a mix of oak and northern hardwood. Discussion on stand trajectory after final harvest of red pine (likely 1-2 more thinnings before this decision is made). Aspen clearcut included retention of well-formed sugar and red maples. Abundant aspen regeneration present. Northern hardwood stand adjacent to aspen clearcut had well-formed residual trees.



Michigan DNR-Traverse City FMU SFI/FSC FM Recertification Audit-West (TC) Tour

October 27, 2020-David White, SFI and FSC Team Auditor

Site #1 Helicopter Spraying Site & site Prep

This was a 121.4-acre aerial spray. The objective of this aerial spray was to reduce hardwood competition (Cherry, Oak, Red Maple) and ground vegetation (Bracken, Sweet Ferns, Berry Brambles) and to provide a clean site to establish Red Pine by planting.

An on the ground site visit was conducted on August 9, 2020. During the site visit the presence of Cherry, Oak and Red Maple was confirmed with these trees being between 3' and 7' tall.

Based upon the site visit, the chemicals prescribed along with their application range were:

Chemical	Application Range	Actual
Accord	1.5-7.5 qt/acre	2.25 qt/acre
Arsenal	2-16 fluid oz/acre	12 oz/acre
Oust	1-4 oz/acre	1 oz/acre

The contractor selected for this job was Hamilton Helicopters, using aerial spray (broadcast). Hamilton Helicopters License no: 030043.

Evidenced public notification signage and letters to adjacent landowners.

Safety: Evidenced safety plan which included first aid, equipment safety both ground and air equipment, evacuation plan, emergency contact information for spill response as well as emergency medical personnel.

Evidenced Operations map which included Access Control Points, State and Private Boundaries, Spray Buffer, and Staging/Landing Areas, Signage locations

Evidenced trenching which was follow up ground site prep after aerial spray. No issues noted and the trenching was effectively completed.

Entire site preparation was well planned and well executed.

Site #2 – Ellis Lake – Installed Culvert and Oak Wilt Treatment

Installation of Culvert: This compartment within the Management Area presents a wide array of management considerations and concerns including diverse recreational use including 2 campgrounds, 4 boat launches, 2 multi-use recreational use trails, hunting and fishing.

Private ownership borders this compartment on the north, east, and south.

Common Loons, Bald Eagles and Ospreys nest in and around the compartment. The Ebony Bog Hunter, a rare Dragon Fly occurs here.

Lost Lake Bog and North Lost Lake Bog have been identified as Ecological Reference areas.

In order to open up 500-600 acres of access, a 14" culvert was placed in one of the primary entrance points. The installation of this pipe eliminated a large muddy crossing and improved access and aesthetics, and reduced the chances of an accident for a person entering the area in an ORV or motor vehicle.

Oak Wilt Treatment Area: Oak Wilt is transmitted through damaged trees (open wound) and through adjoining root systems from one tree to another.

The open wound attracts beetles who transmit fungal spores from one tree to another. The fungal spores enter the open wound, infecting the tree and eventually results in the death of the tree.

Both aerial and ground detection is utilized to track Oak Wilt.

An effective treatment to Oak Wilt is to use a vibratory plow to circle a given area resulting in breaking up the adjoining root systems. The diameter of the circle is based upon the size of the trees and the location of the infected trees. Once the area has been plowed, all live red oak trees and spore producing trees are removed or destroyed through burning.

The site visited had been plowed and all remaining Red Oak Trees were either chipped or burned. No additional Oak Wilt was detected during this site visit.



Site 3 – GEMS – Grouse Enhanced Management Systems

The Department of Natural Resources has partnered with hunters and other partners to develop a series of intensively managed Ruffed Grouse hunting areas across both the Lower and Upper peninsulas. The areas are called GEMS or Grouse Enhanced Management System.

The objective of GEMS is to 1) Provide unique, walk-in hunting opportunities; 2) Promote hunter recruitment and retention; 3) Expand local economies; 4) Provide a destination point for the traveling wing shooter; 5) Accelerate timber harvest opportunities.

As part of the 2020 Michigan DNR Audit, the Little Betsy GEM, located in Benzie was visited. This GEM site encompasses over 4,100 acres

Enhancements include upgrading three existing parking lots and installing informational kiosk's in each, establishing gates in selected areas, and the creation of walking trails which serve a dual purpose of use during harvesting operations. DNR partnered with RGS on this project (Roth Grouse Society, one of the largest stake holders from a wildlife standpoint).

Enhanced Aspen management benefits the Grouse Enhanced Management System. The younger aspen provides critical habitat for the young grouse in the form of dense vertical cover necessary for reproduction. The larger buds of mature aspen provide a food source for the adult Grouse. In terms of recreational opportunities, Grouse hunting season begins September 15 and concludes November 15, then resumes November 15 and ends December 31. Outside these dates, the GEMS recreation areas provide abundant bird watching opportunities.

Site 4 – Platte River Corridor

Special Conservation Areas along the Platte River and Tributaries for riparian habitat, hatchery water quality.

The Platte River State Fish hatchery (DNR Fisheries Division) falls within this compartment and water quality is particularly important. Hatchery operation depends on cold clean water from local streams. Forest management must not compromise the integrity of the Platte River or its tributaries.

The Platte River Special Conservation Area extends approximately 2 miles upstream and 2 miles downstream from the Fish hatchery. This Special Conservation Area is classified as a Cold-Water Stream (defined below). This SCA is groundwater fed, prevents sedimentation and protects areas of shade. Other activities within the SCA include Hatchery Operations, Hunting, Fishing, Trapping (raccoon, mink, otters) and camping.

Cold Water Stream - A Cold Water stream has temperature and dissolved oxygen conditions that allow naturally-reproduced or stocked trout populations and those of other cold water fish species to persist year over year.

Beyond the important riparian areas, this compartment will continue to be managed as a mix of forest types and age classes, including aspen, northern hardwood, swamp forest, plantation pine, and natural white pine stands. Several forest openings scattered throughout the compartment will continue to be managed for open habitat.

Site 5. Leatherwood Mix Timber Sale

The analysis and work detailed in this summary is an example of a very deliberate and thorough decision-making process.

Option 1 - Evidenced permit application to Michigan Department of Environment, Great Lakes, and Energy for a permit to place and utilize a portable bridge.

The purpose of the permit application is to gain access to a state forest timber sale. Alternative (Upland-only access) access from the sale to a primary road (Reynolds Road) results in inordinately long timber forwarding routes across difficult terrain and with impacts to the use of the Lake Ann Pathway recreational trail. The path provided by the portable bridge is not only shorter, but also results in less trail impacts. This route does result in the need for a temporary crossing (portable bridge) spanning an unnamed tributary of the Platte River for forwarder access between the sale area and the proposed timber landing. No fill or excavation is projected during the installation of this temporary bridge and impact to aquatic systems is expected to be minimal.

Option 2: As this evaluation progressed it became apparent that additional costs would be incurred due to the need for additional bridge timbers and the Lake Ann Pathway became the preferred option. An alternative logging equipment access road is planned and equipment crossing areas will be established in two places on the Lake Ann Pathway and the areas of the Lake Ann Pathway in close proximity to the harvesting operation will be closed.

Next steps: Evidenced notices that have been posted to the public providing a visual of areas impacted as well as for the reasons for the necessity of the harvesting, and the expected timeframe.

Note: This harvesting operation is precipitated by the likelihood and danger associated with a concentration of over mature Aspen at risk of falling on the trail. Harvesting operations are expected to begin on November 2 and conclude by year end. Low pressure ground equipment will be used for the harvest.



During the site visit a portion of the area was walked confirming the use of LGP equipment as the best and least cost option.

Site 6. Active Timber Sale, Hotember Mix Timber Sale

Evidenced pre-sale meeting conducted on June 06, 2019, Contract Number – 61-088-17. Qualified Logging Professionals – Chris Yonkers and Clayton Pendleton was verified and documented on the Timber Sale Inspection Report dated 06/16/2019.

Attendees – Tim Webb, Chris Yonkers

June 6, 2019 – Areas discussed during pre-harvest conference were documented.

Weekly inspections documented on the Timber Sale Contract – Field Inspection Report.

During this audit, a site visit was made. A three-person crew consisting of a cut-down machine and two LGP forwarders were working. No SMZs were noted. No rutting was noted on the tract and contractor was spreading debris to minimize washing. No excessive rutting was noted on roads, but the primary haul roads will be to be dressed up. Contractor was aware of this. Noted contractor was spreading debris across the tract.

7. Pancake Hardwood – Inactive Timber Sale

Pancake Hardwood Timber Sale (Potential Hawk Nest). Contract Terms below were verified during site visit with no discrepancies noted:

- Sale boundary marked in blue, red and yellow pt.
- Exterior is blue or red.
- Interior payment is yellow.
- Only cut boundary trees marked with orange paint.
- Within the sale cut all with marked orange paint
- Cut all beech and aspen >5" dbh.
- All trees marked for cutting are painted orange at stump and dbh.
- Skidding of trees with limbs is prohibited (not observed, but confirmed by interview with Tim Webb).
- All products are forwarded to landing areas in final product length (not observed, but confirmed by interview with Tim Webb).
- All slash shall be leveled.
- Block new roads into sale with Berms.
- All trees marked with X – felled for wildlife.

Tim Webb guided us to the site where one of the Raptor nests was spotted. Harvesting was not conducted in this area and a buffer had been established. No sign of a nest was found during the site visit.

No issues noted with haul roads, skid trails or rutting.

Site 8. Inactive Timber Sale, Oil Can Mix Timber Sale.

Overall observations:

No issues noted with roads, skid trails or rutting;

One area of beetle infestation was clear cut, no further evidence noted during today's visit.

Visited Pine second thinning where lower quality trees were harvested, no issues noted.

Stand #7 – Observed several retention trees, observed area of natural regeneration of Big Tooth Aspen.

Stand #4 – Harvest cut with retention areas; Evidenced CWD – Course Woody Debris for Grouse Habitat, Drumming areas for Grouse;

No issues noted with haul roads, skid trails or rutting.



Michigan DNR-Escanaba FMU SFI FM Recertification Audit-East Tour

October 28, 2020-Shannon Wilks, SFI Lead Auditor/FSC Team Auditor

Attendees:

Eric Thompson, District Forester 27 years MI State

Dan Racine, Forester 23 years MI State

Beth Jacqmain, FSC Lead Auditor

Keith Kintigh, Keith Kintigh, Forest Conservation and Certification Specialist

Field: Dan Beaudo, Forester-6 years, 10 years Fire and Equipment

Escanaba FMU-142k acres, Menominee and Delta Counties. 7 staff on unit. 2 fire officers, 1 fire supervisor, 3 foresters and 1 forest technician. Secretary position is vacant. Snow free earlier than other areas and more fire-prone area. Cover types are aspen and cedar secondary. Northern Hardwoods. With mixed swamp conifers. 3400 acres on 25 sales proposed in FY 2020. Higher due to EAB, Spruce Budworm Eastern Larch beetle with minimal oak wilt. 86 open sales currently. Active sales down but last winter around 15. No active sales on East Tour, not sure on West Tour. Inventory around 14000 acres per year. One campground. 100 miles ORV and 120 miles snowmobile trails. Ten percent of inventory annually based on YOY. Majority of regeneration is natural. Natural regeneration is checked within 5 years confirmed during interviews. Deer browse is issue in southern district. No complaints regarding FM activities. One trespass case on West Tour-working with AG office for prosecution. User groups- no report of accidents or fatalities. Piloting culvert and bridge inventory. Contract with Trout Unlimited, utilizing Survey 123 application to take data from existing roads. Data includes bridge conditions, size of culverts and water flow. Automatic download of information into database. No actions have been taken yet as data is being analyzed. Capital funding exists and priority is being developed. Current contract is for entire Western UP. Project extension due to Covid until Dec 2021. Next steps are Eastern UP and Northern with target of entire state for 2022 completion. State Natural Area-administratively managed natural area. Documented within GIS layer. No land conversions-or planting of non-native species.

Michigan Learning Center training system for possible conflict resolution, supervisor academy-3-5-day training.

All harvest activities observed contracts with requirements for SFI Trained Foreman on job, BMP and regulatory compliance. Rutting guidelines and protection of streams. Soil protection with rutting restriction guidelines. Maps with denoted harvest areas, trails, roads-open/closed, gates and boundaries. SFI training is verified by observation of database annually and periodically throughout year. Continuing education classes are on-line. Pre-sale checks for T&E, archaeological, special or cultural occurrences and other required monitoring are performed within VMS checklist process for each sale. No complaints or regulatory violations. No observation of BMP violations within any field sites observed. Utilization of fiber and stump heights were within acceptable range. Minimal damage to residual trees was observed. Retention of dominant species and green tree retention for wildlife was observed.

1. Compartment 112-374 North Drumlin (SFI Mandatory). Contract marked northern hardwood stand. Trust fund purchased in 1995-Sold but not open. North Unit 2. everything harvested except trees in green paint and cedars and hemlock. Stand 114-Unit 3 and 4, contract marked, DNR marked lines and boundaries. Sold in September 2018. Expiration of Dec 2021. Topography is drumlin from glacier. Upland hardwoods. Bark slip requirement/restrictions no harvesting between April to July 15. Post-harvest 75% canopy for improvement in quality. Target regeneration of northern hardwood-Ash, Sugar Maples and Basswood. Target 60-80 BA retention. Orange marked trees marked for harvest, yellow painted unit boundary for stand, red boundary is sale boundary, blue paint is state land boundary. Overall, 297-acre sale with multiple payment units. Observed vernal pond with no marked trees within adjacent bays. Old logging camps were identified and protected with green boundary and excluded from sale. State Historical and Preservation Office contacted for further review. No activity confirmed and ground conditions matched management plans.



2. Compartment 108-Berg Farm-Opening complex Wildlife Division management and pheasant partnership. 160-year-old dairy farm purchased with wildlife funds. Open fields were original agriculture. Burning program instituted- burned twice since 1995-to maintain early successional habitat for pheasant and wild turkey. Wildlife tech has planted clovers and maintains plow lines. Invasive spotted knapweed targeted with herbicide treatment. Application performed by Wildlife Technician-use of 3 quarts. glyphosate. Ground conditions matched FM plans.



3. Compartment 108-Dry Creek SBW (SFI Mandatory). Spruce budworm-open sale. Payment unit 4, completed hardwood thin to 70 BA. Inventoried in 2015, setup in 2017 and Spruce Budworm was observed. Payment units 5-6 were most impacted. Treatment is harvest cut around impacted areas-remove conifer species to inhibit spread. Retention of cedar and other conifers between payment units 1 and 2. Maintained as corridor for deer wintering cover. Payment unit 1 has not been harvested. Observation in PU 4 confirm dominant Maples, Basswood and Ash retained. Minimal damage to stand, no evidence of trash or hydrocarbon spills. Harvested during non-frozen fall which provided Ed scarification for regeneration. Unit completed in Oct 2018. Harvested by documented SFI trained logger. Observed blue marks exterior boundary. No BMP issues or water features within sale area. Next plan for entry is check for regeneration in 5 years.



4. Compartment 45-Compartment 45 Trenching Site (Stand 10). Pathway-21 ft herbicide site preparation treatment. Red Pine Management Objective. Used in scarification and debris breakdown. Scheduled for site prep spraying to minimize completion. Planting scheduled for FY 2022. Sale completed in 2017/2018. Indicator 2.1.1. is satisfied by Limited window for trenching, site preparation spray in next fiscal year (Fall) due to root kill and then planting following spring (April-May). Environmental conditions meet exception.



5. Compartment 46-Cedar River North State Forest Campground. Equestrian Recreation-Recreation Pass required- opt out process during vehicle registration \$10/cost. Out of State visitors pay day use fee. Overnight camping with no electricity or water. Canoeing/Kayaking Big Cedar River. Equestrian trails, cross country ski trails, hiking on multi-use trails. No motorized vehicles allowed.



6. Compartment 39-Wolf Chase (SFI Mandatory). Cedar Harvest-Conditional deer range. Modified sale based on sportsmen input. Co-management with Wildlife. Sale is 308 acres total- Payment unit 8 mostly completed. Units 3, 10 and 6 are completed. Do not cut cedar, hemlocks and other green marked trees. Concerns from biologist and user groups about harvest of cedars and pines. Conditional deer area that spread out compared to obligate deer areas. Volumes planned to harvest were reduced to meet concerns. Target to regeneration mixed upland combination of conifers. Payment unit completed in August 2020. ORV trail adjacent to sale. Operation caution for cutting restriction for frozen or dry ground conditions. Restriction placed on certain payment units. Observation of rutting but nothing exceeding guidelines. Use of slash observed on main skid trails. Ground conditions matched monitoring and management plans. No BMP issues observed. Some higher stumps observed but within guidelines. Old cabin protected in Unit 9-designated by Archaeological site database and noted within GIS layer. Checked within Timber Sale checklist. Sale open but inventory is planned for YOE 2028, field work performed in 2026. No concerns with pine regeneration and stump sprouts for maples.



7. Culvert and Bridge inspection on North Branch of North Fox DNR maintained road. Culvert replaced within previous period due to observation of old culvert pieces. Culvert flowing water and no quality or sediment issues observed. DNR built bridge (Photo 1) observed and no issues observed. Observed contractor-built bridge (photo 2) with no issues. DNR maintained road shared with ORV traffic. Rough win standing water in various sections. No grading has been conducted due to Covid. No crowning or ditches observed. Heavy vegetation covers adjacent to each side of road. No water quality issues observed.



8. Compartment 49-Road Block SBW (SFI Mandatory)-19.4 acres. Spruce Budworm-recently closed. YOE Compartment 2021. 2016 statewide effort to identify Balsam and Spruce with 25% or more. Out of entry Chapter 7 process- without compartment review. Salvage sale to harvest site impacted with SBW in 2017. Final harvest designed to regenerate aspen and upland conifer stand. Regeneration Inventory was performed and confirmed to meet goals. Next YOE planned for 2028 with entry 2026 timeframe. Compartment 1406 acres. Pockets of retention left on border with young green tree retention observed. No issues observed. Stand boundary painted in red.





Michigan DNR-Atlanta FMU SFI FM Recertification Audit-East Tour

October 28, 2020-David White, SFI and FSC Team Auditor

Site #1 Bone Swamp Mix

SFI Mandatory, closed timber sale; Evidenced contract with Precision Forestry. Visited stand 3, Aspen harvest cut. Aspen is expected to regenerate itself. Sale boundaries were clearly marked with no issues noted. Roads were left intact with no issues noted. Pre-harvest Meeting documented by compartment with regular site visits and descriptive notes noted.

Site #2 – James Farm

Observed efforts of the Wildlife Division invasive species removal centered around Autumn Olive. Once favored as a food source for deer, now an invasive species, cannot cut or burn to remove. Currently, a contract has been proposed for hand removal followed by treating the stumps, evidenced forest treatment proposal. Approximately \$10,000 per year has been expended with results documented. Mowing began in 2019 and this has been determined to be an effective method of controlling the spread.

Observed 6.5-acre pond used by DNR Fisheries Division for Walleye. Pond is filled with water from the adjoining Thunder Bay River. Recently hatched Walleye are placed in the pond until they become fingerlings, the pond is drained, and the Walleye fingerlings are harvested using nets.

An issue has developed with excessive growth of vegetation within the pond bottom which interferes with the harvest of the Walleye fingerlings. Evidenced Pesticide Application Plan which will eliminate or substantially reduce the vegetation. No date discussed for implementation at this time.

Site #3 – Squaw Bay Wooded Dune Swale ERA (Ecological Reference Area)

Wooded Dune and Swale Complex is a large complex of parallel wetland swales and upland beach ridges (dunes) found in coastal embayment's and on large sand spits along the shorelines of the Great Lakes.

The Squaw Bay Wooded and Dune Swale Complex is a very large, wooded dune and swale complex on Squaw Bay bordered by roads to the west, the city of Alpena to the north, degraded wooded dune and swale to the south and a Great Lakes Marsh to the east.

Representative and Rare Plants and animals include northern goshawk, red shouldered hawk, gray wolf, piping plover, dune cutworm, bald eagle, osprey. Seventeen rare plant species are associated with the wooded dune and swale complexes.

No silvicultural activities are planned for this ERA.

Site #4 – Devils Ridge Mix, SFI Mandatory Inactive Timber Sale

This was a 27.5-acre harvest cut broken into three payment units. Witnessed Timber Sale Contract. Sale boundaries were clearly established around steep or wet areas. No issues noted.

Site #5 – Norway Ridge Pathway

This is largely a recreation focused area open to hikers, bikers, snow-shoers with a variety of paths that allow from .6 to 6.7 miles of scenic exercise.

Site #6 – Brilinski Red Pine, SFI Mandatory Active Timber Sale

This was a 66.5-acre harvest cut. Evidenced Timber Sale Contract. The sale was active and almost completed. Sale boundaries were clearly marked with no issues noted. Stumps were cut close to the ground. Noted retention pocket. No rutting noted and debris was spread across the tract to minimize soil disturbance. Site prep will be to trench, spray and plant with one and three year monitoring. Logger was Yates Forest Products and I interviewed Matt Yates, co-owner. Matt was a 3rd generation logger. Matt was wearing the required PPE, produced a safety first aid kit, and seemed knowledgeable of his responsibilities. I asked for his CPR and First Aid training. Matt produced the certificates, but they had expired in March of 2019.

Site #7 – Turkey Chaser, Closed Timber Sale, Oak Wilt Management Site

This was a 9.6-acre harvest cut. Evidenced Timber Sale Contract. Harvesting has been completed. No rutting noted. The next steps are to address the Oak Wilt. An effective treatment to Oak Wilt is to use a vibratory plow to circle a given area resulting in breaking up the adjoining root systems. Once the area has been plowed, all live red oak trees and spore producing trees are removed or destroyed through burning and the areas will be monitored for the presence of Oak Wilt.

Site #8 – Dann Road Improvements

This project was based upon the need to address soil erosion and to control sedimentation on the Dann Road. It also significantly improved access to 300 +/- acres of forestland. The project included replacing all (5) equalization culverts and a stream culvert and top dress these with gravel. Fabric was placed on the entire road prior to top dressing. Stone was placed at all inlet/outlet areas of the culverts. Road was approximately 12' wide and crowned with 20' culverts extending past the road bed to minimize erosion. The equalization culverts were 18" in diameter and the stream crossing culvert was 5' in diameter. The "Soil Erosion and Sedimentation Plan" the "EGLE Notice of Authorization," and the "EGLE General Permit Authorization" were reviewed during this audit.



Michigan DNR-Atlanta FMU SFI FM Recertification Audit-North Tour

October 28, 2020-Kyle Meister, SFI and FSC Team Auditor

1. Red Pine Cultivation Work- Recent Cultivation Activities on two sites. First stop was trenched and aerially sprayed with arsenal. Retention area was located adjacent to ORV trail. Notifications posted several days prior to application and remained for at least 5 days post-application. Site to be replanted with red pine in spring of 2021. Second site failed to meet stocking levels. It was sprayed and then trenched prior to planting, but did not meet the minimum of 700 trees per acre. Site was retrenched and sprayed. It will be replanted next spring. Discussions overs systematization of red pine regeneration treatments and acceptable levels of stocking.
2. Shoepac Sinkholes- Karst Topography, ERA, adjacent timber sale BMPs. Dry mesic hardwood ERA and SCA. Area was previously broadly defined as an ERA. A state geologist was brought in to better define the karst areas in the ERA, which will allow active management of aspen and mixed conifer and hardwood outside of the buffer zone. ERA plan is scheduled to be rewritten after the next inventory in 2-3 years.
3. Looney Tunes Aspen- SFI Mandatory. Inactive Timber sale. 5.5 acres of overstory aspen with minor components of red pine, jack pine, white oak, red oak, northern pin oak, and white pine. Leave-tree marking; prescription is to cut all trees >2" DBH. Individual conifers and oaks marked for retention with orange paint. Property boundary marked with blue paint. Retention pocket with red pine, aspen, and oak species near lake marked with orange paint. Sale is scaled for smaller operators.
4. S Ward Sigma Spruce- SFI Mandatory. Recently Harvested timber sale. 7 acre harvest of mixed hardwood (aspen, red maple) and black spruce pulp. Also northern white-cedar removed. Retention of individual red and white pines, and clumps of white pine with northern white-cedar to protect from wind-throw. Boundary areas contain ample spruce and northern white-cedar. Site is classified as difficult to regenerate and will undergo a regeneration check in 3-5 years. Site was logged using rubber-tired equipment with chains. Use of slash to bed skid trails to reduce impacts to soil and water. Logged from Fall 2019-Winter 2020. Unit boundaries clearly marked.
5. Ocqueoc Falls/Lunch- Popular PRD managed site, timber sale adjacent to rec trail. Trail to water fall was reconstructed in 2011 to allow wheelchair access. Steps created to allow disabled users to dismount and enter the water using their arms.
6. Unscheduled stop - Silver Creek Trail- Popular PRD managed site, timber sale adjacent to rec trail. Trail to water fall was reconstructed in 2011 to allow wheelchair access. Steps created to allow disabled users to dismount and enter the water using their arms.
7. Saintha's Little Helper Mix- Recently completed harvest. Aspen clearcut with retention of dispersed oak and red and white pine (>18" diameter), and clumps of eastern hemlock (all sizes retained). All other trees >2" diameter removed, but mostly consisting of red maple and aspen. Harvested trees then chipped onsite after whole-tree skidding to the landing. Tops and dirty chips then distributed over the site, including in some piles for small mammal habitat (e.g., rabbits). Very good use of feller-buncher to do precision harvesting to avoid damage to residual trees. Retention of aspen at sale boundary and entered into tracking system for when adjacent stand is scheduled for harvest. Access skid trail berm with soil and logging residues to control access by recreational users.
8. Rejection Burn Red Pine- Active timber sale. 9 acre red pine thinning using processor and forwarder. Good distribution of slash over the site. Objective-thin to 120 BA. Interview with forwarder operator and inspection of equipment. Two fire extinguishers, first aid kit, cellphone booster, and vacuum system confirmed on the machine. Spill kit confirmed in operator's truck. Discussion with FME staff on training and knowledge transfer.

Michigan DNR-Escanaba FMU SFI FM Recertification Audit-West Tour

October 28, 2020-Beth Jacquain, FSC Lead Auditor/SFI Team Auditor

West Escanaba

1/ 113/ Menominee River SBW (Heiden). Spruce Budworm salvage. BMP considerations. Adjacent to Stat Rec Area. Spruce plantation. 1/3 dead at the time getting set up. 40-year-old stand. Spruce budworm review done in 2016, identified stands by criteria of type - balsam and spruce. Then surveyed those stands for budworm damage. Wildlife then did review prior to management activity. WL identified area white cedar to retain on west side unit 6. Harvest done spring 2020. 80-85% spruce. Very few aspen, balm in the stand but allowed to naturally regenerate rather than maintain original objective of mostly pure spruce stand.

2/ 9/ Comp 9 Trenching Site. Trenched in '20, '21 as site prep for seedling planting. Site Prep Herbicide Treatment, Red Pine planting. Discussion: Site prep treatment prescription development and approval process; regeneration monitoring.



3/ 9/ Pemene Split (Zwergel). 2019 Sale. Sold to small operator, not yet started. BMP Considerations implemented and confirmed for Pemene Creek. 100' buffer switches to 300' buffer in aspen type due to problems with beavers. Specifically recommended to this buffer expansion by Fisheries during regular, integrated stand review.

4/ 8/ Comp 8 Trenching Site. Trenched in '20, '21 Site Prep Herbicide Treatment, Red Pine. 16 acres.

Next year regen check to be done by contractor. Adjacent to grassy opening, which was maintained at the request of wildlife staff, made resulting from regular "proposal" (proposed management activity) integrated review process. Some wet spots excluded as a result, not sprayed or planted.

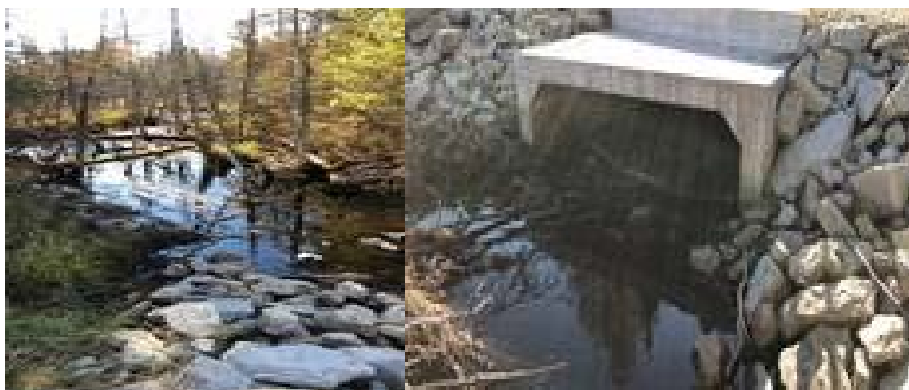


5/ 7/ Pemenee Creek Bridge. Replacement of old railroad bridge, project done in 2018. Capital Outlay project.

Permit Number 10-55-0072-P Issued: 07/13/2011 with Expiration Date: 07/13/2016. MI Department of Environmental Quality, Water Resources Division, under provisions of the Natural Resources and Environmental Protection Act, 1994 PA 451, as amended, and specifically: Part 31 Floodplain Regulatory Authority of the Water Resources Protection, Part 301 Inland Lakes and Streams. The project removed the temporary bridge and constructed a 14-foot-wide, 30-foot span timber and steel bridge at this Houtes Spur crossing of Pemenee Creek. Approximately 430 cubic yards of material was excavated and 281 cubic yards of material to widen the road. Placed approximately 29 cubic yards of clean rock rip rap around bridge abutments. All work was monitored for completion in accordance with the terms and conditions of the permit and the plans are kept on file with Water Resources Division. This was a Joint Permit Application.

6/ 11/ Miscauna Leftovers (Frank's). Re-sale and expansion of a returned sale. Discussion of poor-quality northern hardwoods silviculture. Originally sold in 2015 but returned, uncut. Significant deer browsing for the site, considered a severe issue. Expansion during re-set up included more trees marked to release to open stand more for greater regeneration production and to release existing pine regeneration thought to less vulnerable to deer browsing and to encourage pine regeneration. Map shows Goodman Brook, to north but outside treatment area. Brook buffer verified.

7/ No compartment/ Goodman Brook Culvert. Access road and Goodman Brook intersection. Private Property with access to adjacent and extensive DNR properties. Project completed in 2018 as part of a Capital Outlay expenditure.



8/ 3/ Timber Trespass Issue/ Active Timber Trespass Case. Theft occurred in 2016. Forester reported suspicions of timber theft. Flagged based on underbidding. History of problems with this operator. Worked with local CO immediately. Set up traps designed to be court- ready by inserting metal screws into unmarked tree bases for later metal detection. Forester did find trees that were marked by the logger after the sale. Then cameras were put up and confirmed by video evidence that tree marking had occurred. Forester took detailed basal area, by GPS mapped points with detailed notes of methodology prior to opening of the sale, to be used in combination with other evidence. Paint samples were collected from harvested logs and tested by court laboratory confirming there was paint used that did not match the standard DNR paint (Nelson spot paint versus aerosol). Search warrants were acquired for residence and on-site trailer. Then found aerosol paint at suspects residence. Suspect confessed. Estimates of mill value was over \$300,000. Court case is still on-going and, unfortunately, prosecution is stalled.

9/ 4/ Carney Fen. Dedicated Natural Area, HCV, and ERA. Northern Fen and Bog. Citizen orchid survey efforts led to this area being identified as HCV. 1st generation ERA (MI DNR context, iterations of ERA/HCV development). Only highest quality networks (1st generation) were included initially, then the network was expanded to be more inclusive. Plan to be updated within next 5 years or so. Some areas ERAs not raised to HCV but considered to be "Administratively nominated". Administrative ERA "proposed" administrative area with roads open. HCV Dedicated areas are all designated roadless. Area has over 20 species of orchids which were found through citizens groups with initial leadership by an amateur botanist. Areas defined by high quality floristic index characterizing high botanical diversity.



Appendix 5

Attendance Records

Opening Meeting

Name	Position	Notes	Email
Beth Jacqmain	FSC Lead Auditor		
Shannon Wilks	SFI Lead Auditor		
Kyle Meister	FSC Auditor		
David White	SFI Auditor		
Keith Kintigh	MDNR Forest Conservation and Certification Specialist		kintighk@michigan.gov
David Price	Forest Planning and Operations Section Supervisor		priced1@michigan.gov
Doug Heym	Unit Manager, Timber Sales and Utilization	Cruise Update	heymd@michigan.gov
Jeff Stampfly	Acting Forest Resources Division Chief		stampflyj@michigan.gov
Kerry Wieber	Forest Land Administrator	Land Strategy Presentation	wieberk4@michigan.gov
Scott Jones	Forest Certification Planner	Forest Action Plan Update	joness38@michigan.gov
Dan Heckman	Forest Planning and Monitoring Specialist	State Forest Plan Update	heckmand@michigan.gov
Jan Hebekeuser	Training & Safety Officer		hebekeuserj@michigan.gov
Erika Sundberg	Human Resource Manager / Personnel Liaison		sundberge1@michigan.gov

Traverse City FMU

Name	Position	Notes	Email
Kyle Meister	FSC Auditor		
David White	SFI Auditor		
Katie Armstrong	Forester, Acting Unit Manager	Kalkaska/West Tour	amrstrongk@michigan.gov
Tim Webb	Forester	TC/East Tour	webbt@michigan.gov
Paul Roell	Forester	Kalkaska/West Tour	roellp@michigan.gov
David Price	Forest Planning and Operations Section Supervisor		priced1@michigan.gov

Newberry FMU

Name	Position	Notes	Email
Beth Jacqmain	FSC Lead Auditor		
Shannon Wilks	SFI Lead Auditor		
Keith Magnusson	Unit Manager	Tour 2	magnussonk@michigan.gov
Matt Payment	Forester	Tour 1	paymentm1@michigan.gov
Lester Livermore	Forester	Tour 2	livermore1@michigan.gov
PJ Costa	Fire Officer	Tour 1	costap@michigan.gov
Keith Kintigh	MDNR Forest Conservation and Certification Specialist		kintighk@michigan.gov



Atlanta FMU

Name	Position	Notes	Email
Kyle Meister	FSC Auditor		
David White	SFI Auditor		
David Price	Forest Planning and Operations Section Supervisor		priced1@michigan.gov
Cody Stevens	Unit Manager	North Tour	stevensc@michigan.gov
Richard Barber	Forester	East Tour	barberr@michigan.gov
Ryan Zimmerman	Forester	North Tour	zimmermanr1@michigan.gov

Escanaba FMU

Name	Position	Notes	Email
Beth Jacqmain	FSC Lead Auditor		
Shannon Wilks	SFI Lead Auditor		
Keith Kintigh	MDNR Forest Conservation and Certification Specialist	West Tour	kintighk@michigan.gov
Eric Thompson	Unit Manager	West Tour	thompstone3@michigan.gov
Dustin Salter	Forester	West Tour	salterd1@michigan.gov
Dan Racine	Forester	East Tour	racined@michigan.gov
Dan Beaudod	Forester	East Tour	beaudod@michigan.gov
Reid Roeske	Lt. DNR Law Division	West Tour	roesker@michigan.gov

Closing Meeting

Name	Position	Notes	Email
Beth Jacqmain	FSC Lead Auditor		
Shannon Wilks	SFI Lead Auditor		
Kyle Meister	FSC Auditor		
David White	SFI Auditor		
Keith Kintigh	MDNR Forest Conservation and Certification Specialist		kintighk@michigan.gov
David Price	Forest Planning and Operations Section Supervisor		priced1@michigan.gov
Katie Armstrong	Forester, Traverse City FMU		
Richard Barber	Forester, Atlanta FMU		
Dan Beaudod	Forester, Escanaba FMU		
Keith Magnusson	Unit Manager, Newberry FMU		
Steve Milford	District Supervisor, NE Lower Peninsula		
Pat Mohney	Acting District Supervisor, NW Lower Peninsula		
Jay Osterberg	Fire Supervisor, Escanaba FMU		
Dan Racine	Forester, Escanaba FMU		
Dustin Salter	Forester, Escanaba FMU		
Tom Seablom	District Supervisor, W Upper Peninsula		
Jeff Stampfly	Acting Chief, Forest Resources Division		
Jason Stephens	Acting Assistant Chief, Forest Resources Division		
Cody Stevens	Unit Manager, Atlanta FMU		
Eric Thompson	Unit Manager, Escanaba FMU		
Ryan Zimmerman	Forester, Atlanta FMU		
Tim Webb	Forester, Traverse City FMU		



Appendix 6

Forestry Program COVID-19 Report Appendix

Client Name: Michigan Department of Natural Resources

FRS: 5Y031

Is this a fully remote special audit? YES NO Justification:
[] [x]

Opening/Closing Meeting conducted via Microsoft Teams. Electronic records and maps sent to Auditors for field sites and documented evidence.

Is a remote special audit for certificate extension needed? YES NO Justification:
[] [x]

Approximate date of the future on-site special surveillance or re-evaluation audit to be completed within the allowed extension period.

Was this remote audit able to be effectively completed using remote audit methods? YES NO If no, why?
[] []

State reason if "no" is selected: N/A-Audit conducted effectively; field sites were conducted and use of Microsoft Teams for program review and opening/closing meetings.

Are there specific portions of the audit that could not be effectively evaluated? YES NO Portion of the audit that could not be audited:
[] [x]

Remote audit methods used:

Remote method/tool

Used for

Microsoft Team

Opening/Closing Meeting; Program Reviews



Additional questions

When is it expected that the organization will be able to function normally?

Unknown-Operating under State of Michigan Guidelines

Is the organization able to ship products or perform the service defined within the current scope of certification? If not, when is it expected to be able to do so?

Forest operations are conducted as normal based on Guidelines from State of Michigan; non-essential personnel are working from home.

Does the organization need to use alternative manufacturing and/or distribution sites? If so, are these currently covered under the current certification or will they need to be evaluated?

N/A

Will some of the processes and/or services performed or products shipped be subcontracted to other organizations? If so, how will the other organizations' activities be controlled by the certified organization?

N/A

To what extent has operation of the management system been affected?

Field operations are delayed due to work from home, social distance guidelines and other protocols from State of Michigan.

Has the certified organization conducted an impact assessment regarding COVID-19?

State of Michigan Guidelines and Executive Orders.
