

Forest Roads Inventory Update

Mark Monroe

PRCSF Unit Manager/Road Inventory Lead

Forest Resources Division

NRC 01/13/2022



Public Act 288

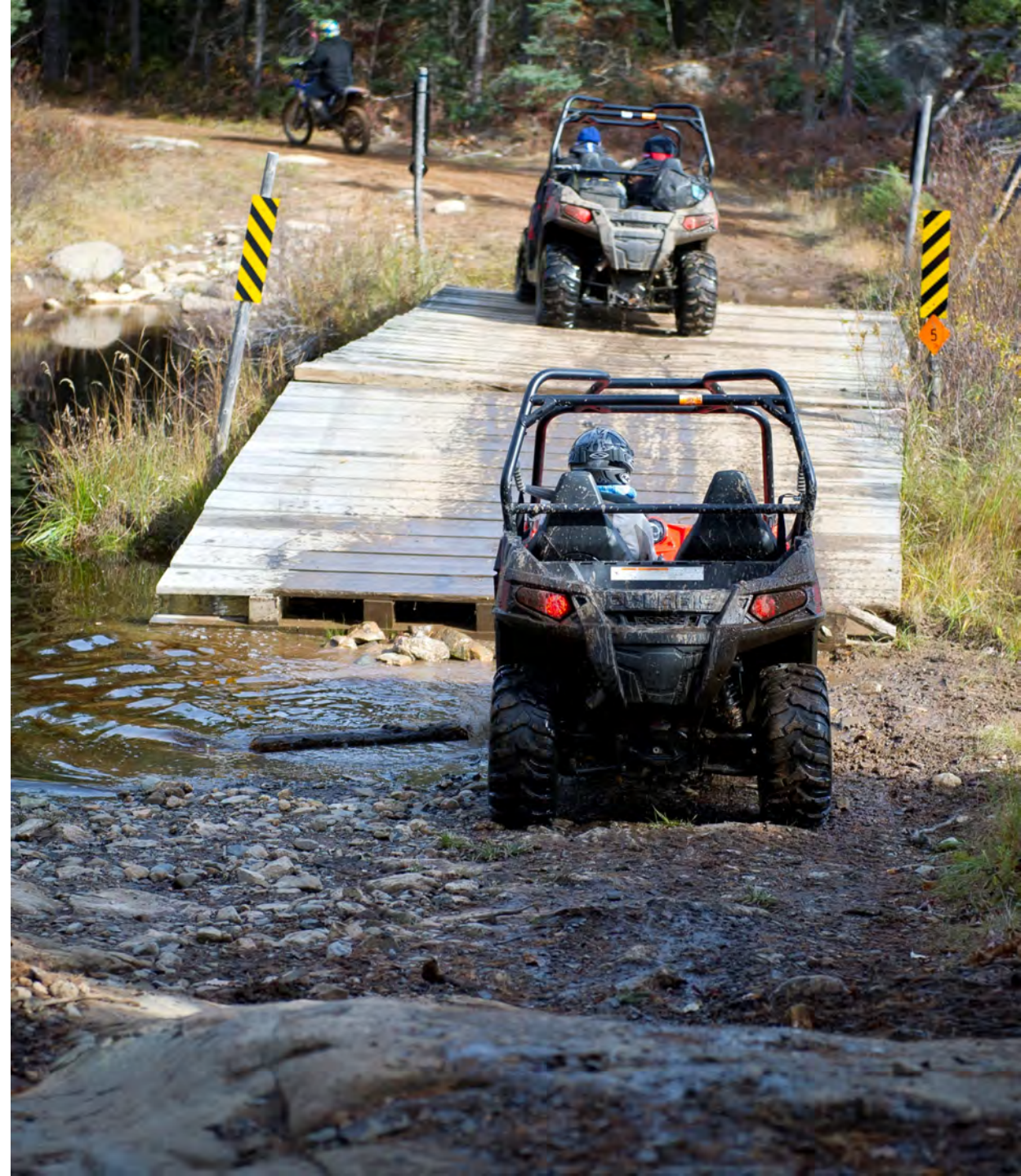
- Signed by Gov. Snyder in 2016
- Requires determination of motorized and non-motorized use restrictions
- Requires DNR to post maps and mileage open to motorized use each year
- Requires an inventory of forest roads by region, including:
 - Location
 - Condition
 - Development Level

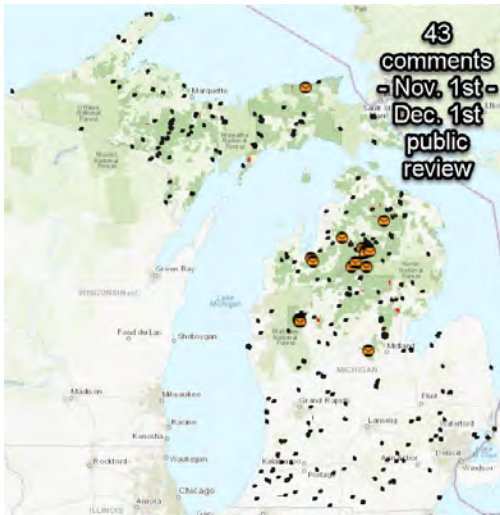




Inventories Completed

- Dec. 14, 2017: LUOD designated roads open to ORVs in the NLP
- Dec. 13, 2018: LUOD identified UP and SLP roads open to ORVs
- Maps are fine-tuned each year
- Roads may be opened or closed to ORVs or other vehicles





Process for Change

- Status changes can be initiated by public comment, Department staff, stakeholders, tribal governments or local units of government
- Multi-disciplinary DNR team reviews and recommends changes
- 30-day public review each year before proposed changes are made
- DNR received 83 comments from Sept. 1, 2020-Aug. 31, 2021; 43 comments were received during the Nov. 1-Dec. 1, 2021 public review phase



2021 Proposals

- Remove ~9.3 miles of road segments from state forest maps for conventional & ORV use
- Delete 10.3 miles of roads due to data cleanup of non-existing or duplicate roads
- Add 205.1 miles of roads to maps that were not previously included in the inventory; 80.8 miles will be open to ORV use and 116 miles open to seasonal ORV use (Boating Access Sites)
- Opened 98.5 miles of roads seasonally to ORV's (majority of which are part of Camp Grayling Military Roads, seasonal closures needed during Military use.)

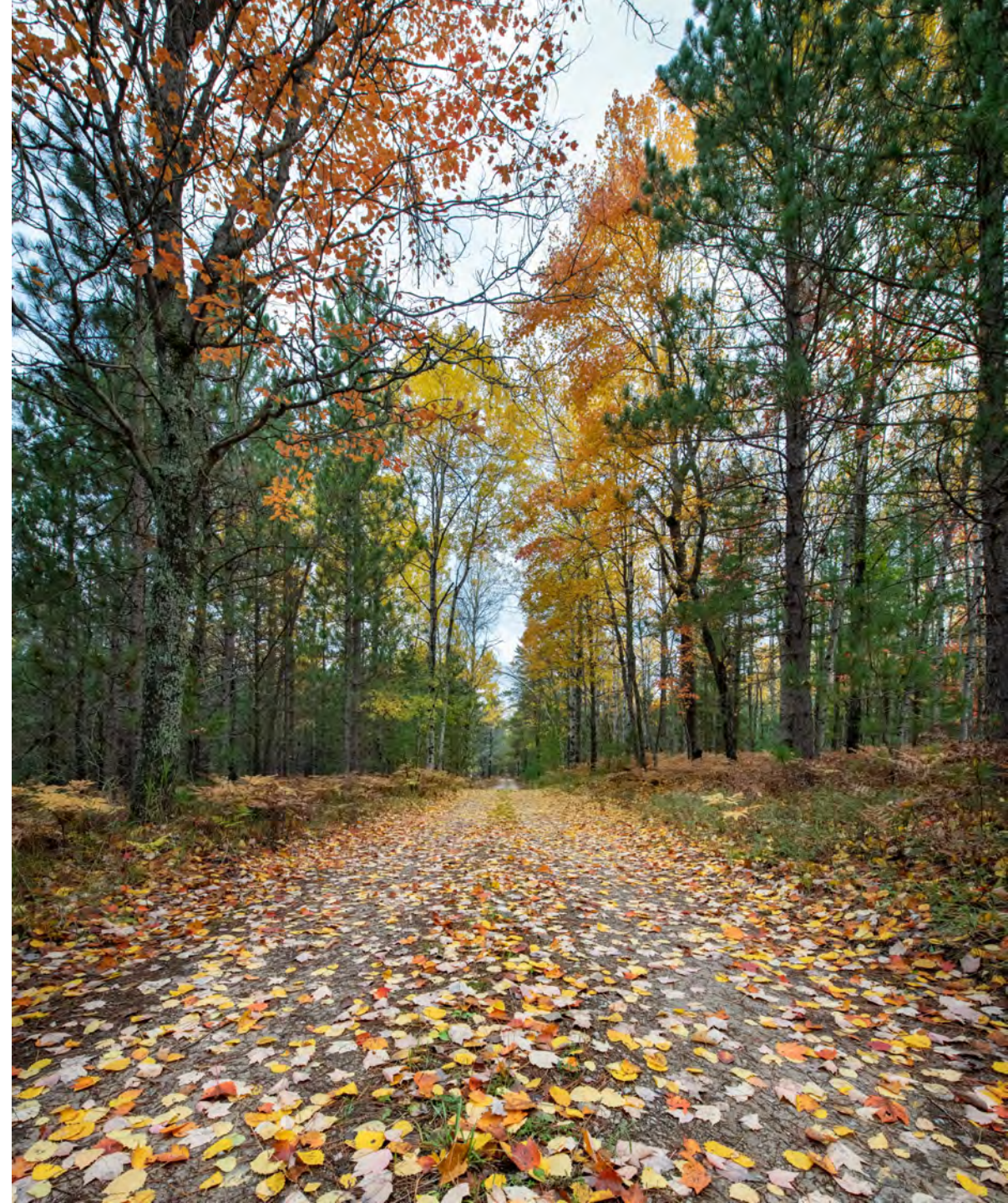


Miles of Road by Region

- Upper Peninsula: 5,497.9 miles open to ORV use out of 5594.0 total miles
 - While conducting the road inventory review over the past year, the overall road mileage for the UP was reduced by approximately 900 miles. There has not been an actual loss of on the ground roads open to the public, this is simply a data correction.
- Northern Lower Peninsula: 6,205.1 miles open to ORV use out of 7,317.2 total miles
- Southern Lower Peninsula: 9.4 miles open to ORV use out of 370.9 miles of state forest roads

What's Next?

- Director's action in February
- Maps reflecting approved changes will be published online by April 1, 2022
- Signs will be posted on state-managed forest roads closed to ORV use, including seasonal closures



Questions?

