



Instructions for Submitting Samples to the Wisconsin Veterinary Diagnostic Laboratory (WVDL) for Chronic Wasting Disease (CWD) Testing

1. Preparation

- a. If you need a shipping container for submitting your samples, use the “CWD ELISA Supply Order Form” found here <https://www.wvdl.wisc.edu/wp-content/uploads/2020/10/WVDL-CWD-Supply-Order-Form.pdf>. If you choose to use your own container skip to step b.
 - i. On the supply order form, select the quantity of each shipping item you need (shipping box, ice pack, shipping label). Request a Styrofoam-lined shipping box for each head or set of samples you plan to ship (multiple sets of lymph nodes can be included in one box as long as they are individually bagged and properly labelled). Each shipping box costs \$10 and will be sent directly to you.
 - ii. Next select the quantity of each test you need (e.g. if you are submitting lymph nodes from two different deer you enter quantity of “2” next to ‘CWD ELISA on lymph node’).
 - iii. If items are properly entered, the form will provide you with an estimate of the balance due at the time of sample submission. An invoice will be sent with your shipping supplies.
 - iv. Email the completed form to supply.room@wvdl.wisc.edu.
- b. If you choose not to order a shipping box from WVDL, you must use a hard-sided and leak-resistant container for shipping samples. Request your overnight shipping label on-line (see section 6 of these instructions).
- c. If paying by check or cash, payment for testing, shipping supplies, and shipping labels must be included with your sample submission. If you would like to pay by credit card, a representative will contact you once your submission is received with instructions for paying online. **Testing will not occur until payment is received.**

2. Cost Table (ELISA)

You have the choice to submit lymph nodes that have been extracted from your deer’s head (preferred) or to submit the entire deer head. The extra cost for whole head submission covers lymph node extraction and head disposal by the WVDL.

Cost of CWD Test: Option 1 - Lymph Nodes Only	Cost of CWD Test: Option 2 – Whole Head	Styrofoam Container Cost and Ice Pack	Overnight Shipping Cost
\$21.50	\$66.20	\$11.00 + \$10.00 S&H	\$15.00

3. Lymph Node Submission

- a. Remove lymph nodes from deer head using the provided references (Appendix A). If you are having trouble locating lymph nodes, remove the entire area shown in the pictures.
 - i. There may be a taxidermist in your area that can remove lymph nodes for a small fee.
- b. Once both of the lymph nodes are removed, double bag them using zip-lock bags and seal closed. If you have multiple deer you want tested, each set of lymph nodes must be packaged in separate zip-lock bags.

- c. Label each outer zip-lock bag with the following information:
 - i. Date of collection
 - ii. Landowner and hunter name (first and last name)
 - iii. Sample number, starting with #1. (Based on the number of samples you are submitting. For example, if you are submitting samples from 3 deer you would label each with a new number: #1, #2, #3)
 - iv. DNR Kill Tag ID number (**Figures 1 and 2**).
- d. Place the bags containing the lymph nodes in the freezer until it is time to ship to prevent decomposition during holding and shipping. The samples **must** be frozen before shipping.



Figure 1. Deer Harvester Tag showing (circled) Kill Tag ID number to be used on submission form.

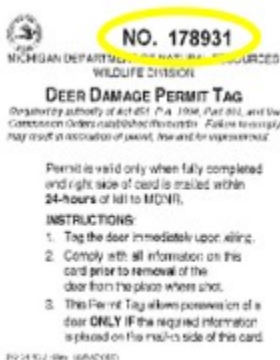


Figure 2. Deer Damage Permit Tag showing (circled) Kill Tag ID number to be used on submission form.

4. Whole Head Submission

- a. Remove the head from the carcass leaving about 4 inches of the neck attached.
- b. Double-bag the head in plastic bags and tie off or zip tie each bag to seal.
- c. Label each outer bag (prior to placing the head inside) with the following information:
 - i. Date of collection
 - ii. Landowner and hunter name (first and last name)
 - iii. Sample number, starting with #1. (Based on the number of samples you are submitting. For example, if you are submitting samples from 3 deer you would label each deer with a new number: #1, #2, #3)
 - iv. DNR Kill Tag ID number (**Figures 1 and 2**).
- d. Freeze the head until ready to ship.

5. Packaging Submissions

- a. On the day of shipment, place the frozen lymph nodes or head in the shipping container.
 - i. Your shipping container must be the one provided by WVDL or a hard-sided, leak resistant container that can be completely sealed. (for example, a small cooler that is taped tightly closed works well).
- b. Complete a Michigan CWD Test Submission Form found here:

<https://www.wvdl.wisc.edu/wp-content/uploads/2020/10/Michigan-CWD-Test-Submission-Form.pdf> for **each** sample being submitted. The submission form must be filled out completely to proceed with testing.

- i. The ID numbers on the form must match the information on the sample bag(s).
- ii. Place the (folded) submission form(s) in a separate zip-lock bag and place it in the shipping container with the sample(s).
- c. If paying by check or cash place payment in a separate zip-lock bag or in the zip- lock with the test submission form and place it in the shipping container.
 - i. Lymph node submission plus overnight shipping cost is \$36.50. If ordered shipping supplies total cost is \$57.50. (add 21.50 for each additional set of lymph nodes within the same shipment)
 - ii. Head submission plus shipping (\$81.20) with shipping supplies (\$102.20).
- d. Include a frozen ice (gel) pack to keep the sample cool. Please do not use regular ice as it will melt and cause damage to the included materials.
- e. Pack the container with paper towel or newspaper to keep contents from shifting.

6. Sample Shipping

- a. The WVDL has contracted with UPS for a flat overnight shipping rate of \$15 per container. Shipments can be picked up from your home for delivery to the WVDL.
- b. Pre-printed labels can be printed from the WVDL website:
<https://www.wvdl.wisc.edu/index.php/shipping-information/>
 - i. Scroll down to 'Shipping Labels' and select "Click here for WVDL shipping labels"
 - ii. Fill out the information in the first column (Ship From).
 - iii. Select "WVDL-Madison" in the second column (Ship To).
 - iv. In the third column (Shipment) **You must select UPS Next Day Air. Do not select** UPS Ground as samples may decompose and may not be viable for testing.
- c. On the day of shipment, the submitter must notify WVDL by emailing tse.coordinators@wvdl.wisc.edu and submissions@wvdl.wisc.edu including the number of samples and the shipment tracking number.
- d. Samples should ONLY be shipped Monday through Thursday to avoid the package sitting over the weekend and sample decomposition. Friday shipping for a Saturday delivery will cost \$30 and is strongly discouraged.

7. WVDL Testing and Reporting

- a. CWD Results may take up to two weeks to be reported back to the submitter.
- b. Any lymph nodes examined containing abscess material (pus) will be sent to the Michigan Department of Natural Resources (MDNR) to rule out bovine tuberculosis. This will be at no cost to the submitter. The MDNR will contact you regarding this testing if it is necessary. This will not affect turn-around times for CWD results.
- c. CWD test results will be reported by the WVDL to the submitter, the MDNR, and any additional email addresses provided on the submission form.

8. References to help with pulling lymph nodes for CWD testing

- a. Visit www.michigan.gov/cwd and click on "[For Hunters.](#)"

9. Inquiries

Michigan Department of Natural Resources

Cameron Dole

(517) 336-5030

DoleC@michigan.gov

Katie Farinosi

517-355-4077

FarinosiK@michigan.gov

Wisconsin Veterinary Diagnostic Laboratory

Daniel Barr

608-574-0432

Daniel.barr@wvdl.wisc.edu

Appendix A. Removing Lymph nodes for CWD Testing Submission

Step 1. Locate the larynx approximately where the neck bends.

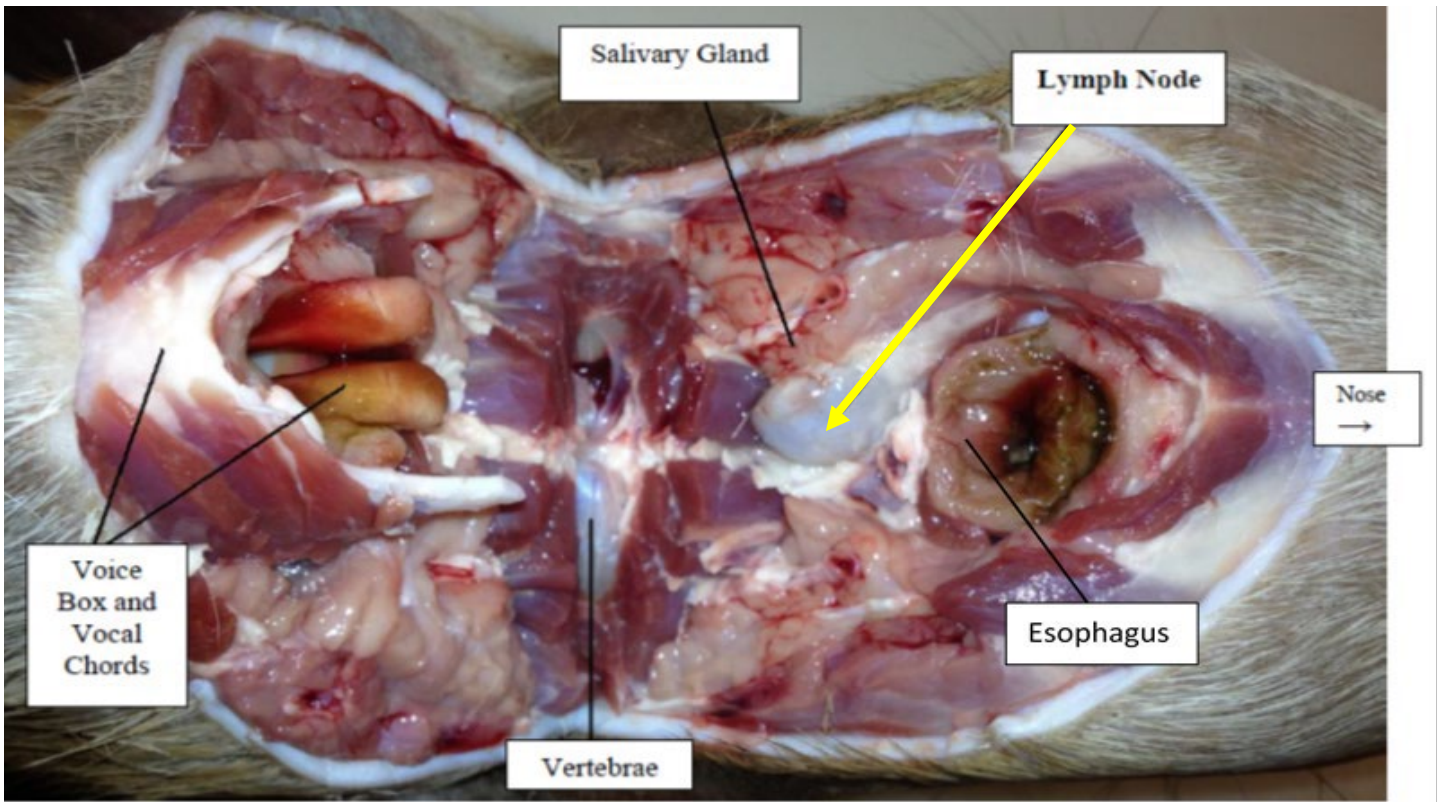


Step 2. Make a U-shaped cut across the neck toward each ear. Your incision should be just behind the jawbone.



Step 3. Grasp the larynx and cut back toward you exposing the esophagus opening shown below. The lymph nodes will sit in a pocket to the lower left and lower right of the esophagus. Grasp each node with forceps and cut away at

surrounding tissue. Try to remove both nodes as intact as possible.



Proper Tissue: Medial Retropharyngeal Lymph Nodes

Lymph nodes can come in many different sizes and colors, but always look bean shaped and sit in pockets near the center of the throat. The nodes will be firm and retain their shape when gently pressed against a hard surface.

Please note that if tissue other than medial retropharyngeal lymph nodes are received, a test cannot be performed, and a refund will not be offered. However, a credit can be applied to the client account for future testing. If you are ever unsure that you are collecting the correct tissue, please refer to the above photos, use the videos listed in the references section, you can cut out that section of the throat shown in Step 3 or you may send the entire head at additional cost.

