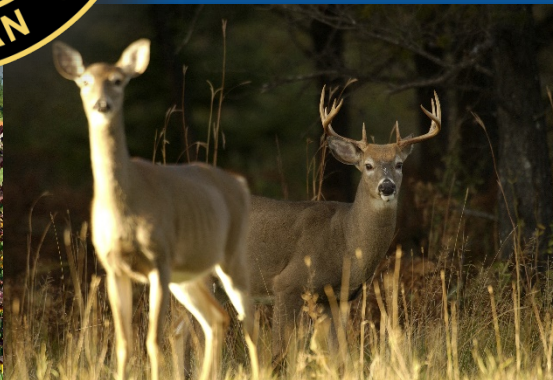




# State Land Review

## Natural Resources Commission

July 15, 2021





# State Land Overview

**DNR manages 4.6 million acres of public lands and 6.4 million acres of mineral rights on behalf of the residents of Michigan**

- State forests: 3.9 million acres
- State parks & recreation areas:  
357,000 acres
- State game & wildlife areas:  
364,000 acres



*Green on map denotes DNR-managed public lands in Michigan*





# Management Issues

- Isolated land holdings may reduce conservation and recreation values
- Managing marginal land holdings may detract from best overall management of more critical lands
- Income from the sale of marginal lands allows acquisition of important private in-holdings





# 2013 Managed Public Land Strategy

- PA 240 of 2018 requires implementation of 2013 Managed Public Land Strategy
- Implementation includes a comprehensive review of ~240,000 acres of state-owned land to determine contribution to DNR mission
  - Includes:
    - Land less than 200 acres in size
    - Blocks of land that due to an irregular shape have extensive private-public boundary interface that is potentially difficult to manage
  - Does **not** include:
    - Trails
    - Developed boat launches
    - DNR facilities

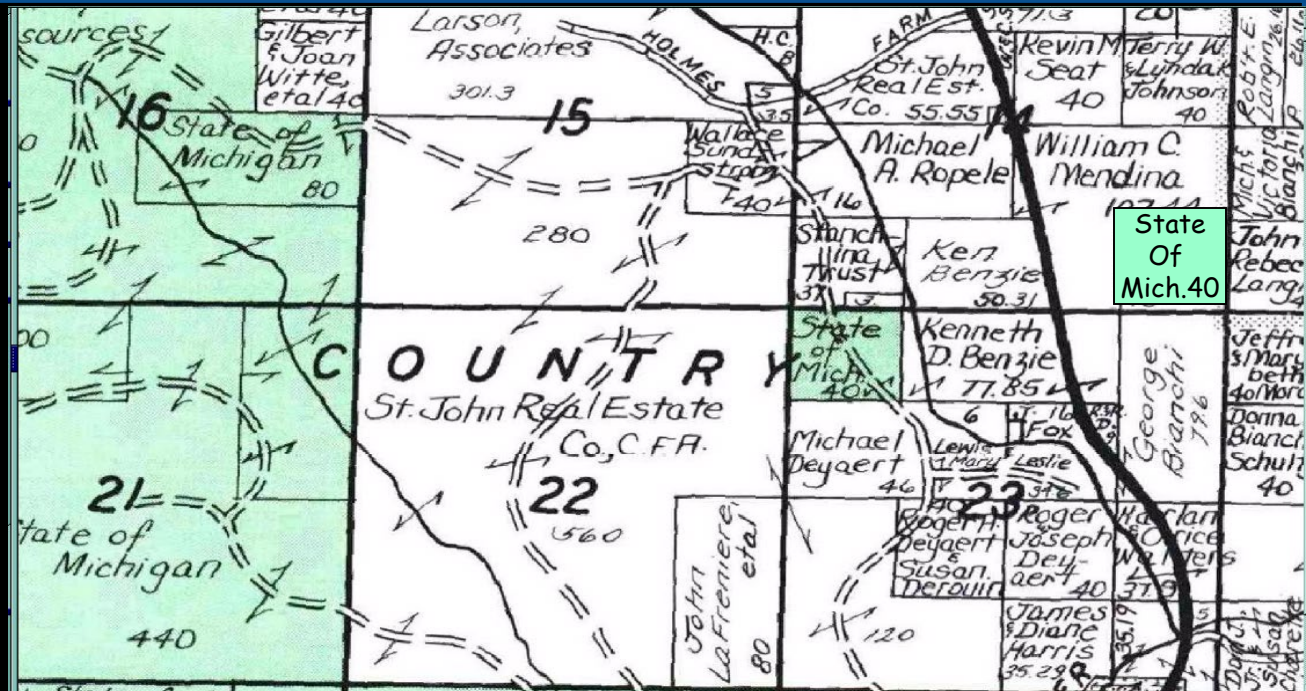


# Review Process

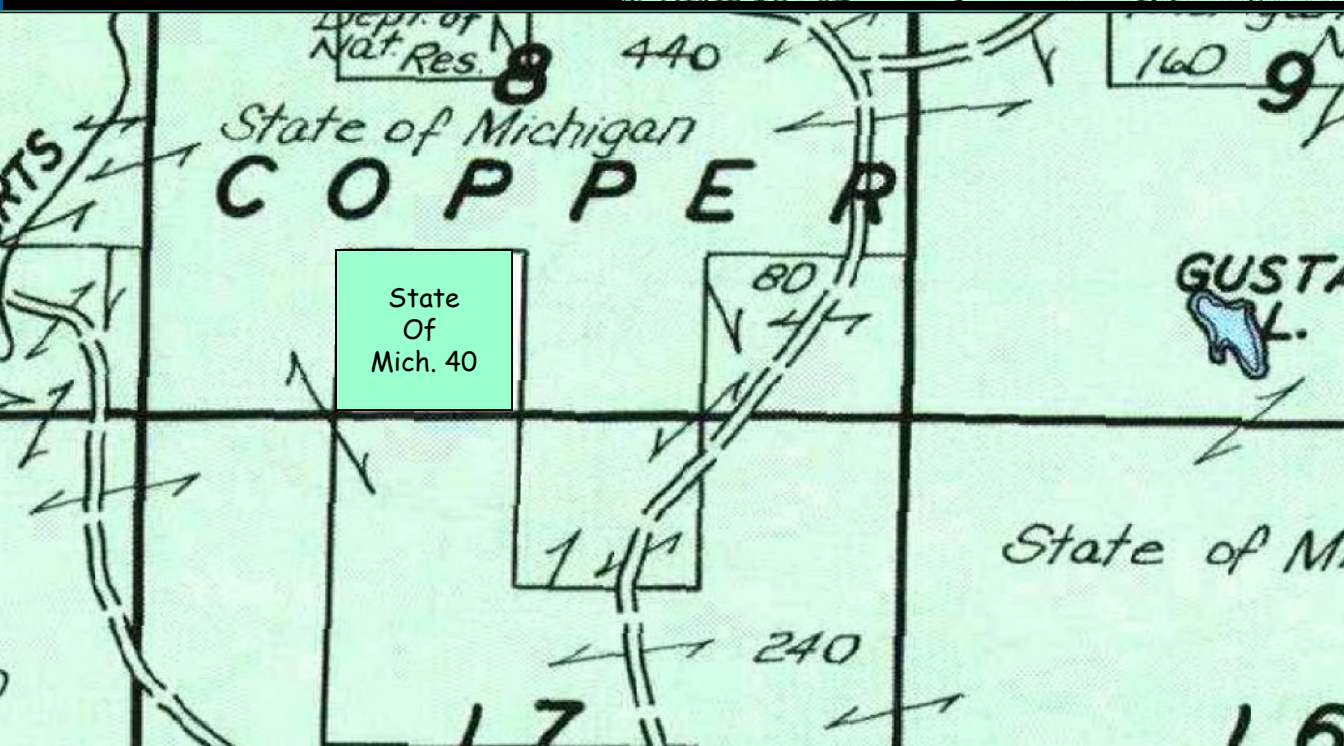
- Review groups of 10 counties at a time; internal review for Group 1 began in September 2020
- All parcels receive multi-disciplinary and multi-level review to develop recommendations
- Public review is integral part of the overall process







Private Inholding



Isolated Parcels



# Parcel Evaluation

All parcels are evaluated for:

- Pertinence to the DNR mission
- Presence or absence of significant natural and cultural resources or recreation opportunity
- Legal access for public use and DNR management
- Adjacent land use and ownership
- Access to a river, lake, or stream
- Meet purposes for which it was purchased (if purchased)







# Parcel Classification

- All parcels are classified into one of the following categories:
  - Retain under state ownership and DNR administration
  - Offer to a local unit of government or alternate conservation organization
  - Make available for a land exchange
  - Dispose







# Program Review

- Title and deed restrictions
- Mineral evaluation
- Renewable energy site evaluation
- Environmental concerns (EGLE)
- Critical Dune/High Risk Erosion Area (EGLE)





# Public Review

- Parcel recommendations and additional information available on DNR website
- Opportunity to submit comments on specific parcel recommendations via online interactive map
- Two virtual public meetings scheduled to provide an overview of the process and accept comment
- Comments also accepted at [DNR-StateLandReview@michigan.gov](mailto:DNR-StateLandReview@michigan.gov)





# Final Parcel Recommendations

- DNR's Land Exchange Review Committee (LERC) reviews and considers public comment
- LERC makes final recommendation to DNR Director for each parcel
- DNR Director makes a decision on the final classification of each parcel at a public Natural Resources Commission meeting

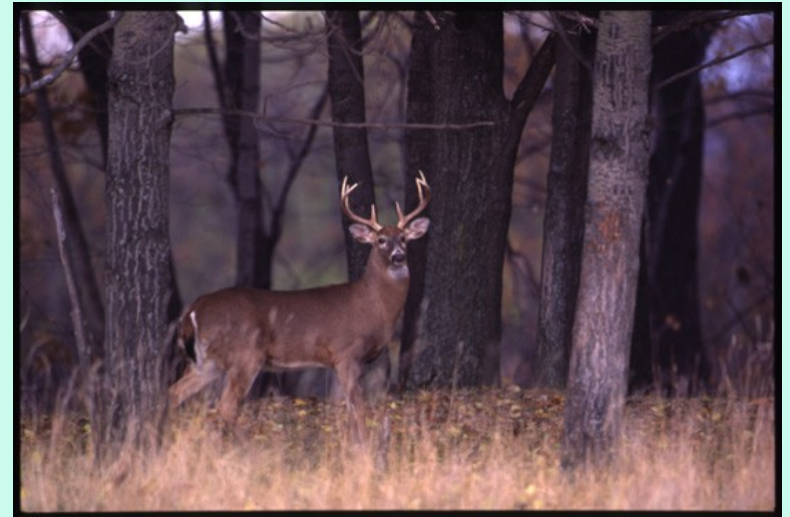






# Next Steps

- Send notices to local units of government
- Notify alternate conservation organizations – retain if no interest
- Make land available for land exchange and market for 2 years
- Sale of surplus parcels by auction
- If no bids, land remains available for direct purchase





# Questions?

[Michigan.gov/PublicLands](https://Michigan.gov/PublicLands)

[DNR-StateLandReview@michigan.gov](mailto:DNR-StateLandReview@michigan.gov)

