

# Sleeper State Park

## PHASE 2 GENERAL MANAGEMENT PLAN

Long-range management guidance focused on the specific natural resources historic/cultural resources, recreation opportunities and education/interpretation opportunities for Sleeper State Park.



Michigan Department of Natural Resources  
Parks and Recreation Division  
10/23/2017

Intentionally Left Blank




This plan was prepared by:  
Matt Lincoln  
Michigan Department of Natural Resources, Parks & Recreation Division

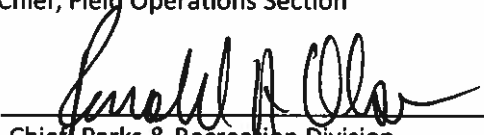
**Plan Approvals:**

  
\_\_\_\_\_  
Chief, Planning & Infrastructure Section

4/19/18  
Date

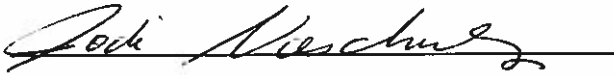
 for Anne Sylvester  
\_\_\_\_\_  
Chief, Field Operations Section

4/19/18  
Date

  
\_\_\_\_\_  
Chief, Parks & Recreation Division

4/25/18  
Date

**PLAN APPROVAL RECOMMENDATIONS:**

  
Park Supervisor, Sleeper State Park

3-6-18  
Date

  
Regional Field Planner

3/20/18  
Date

  
Roscommon District Supervisor

3-12-18  
Date

  
Stewardship Unit Manager *Glen Palmyren (wsc)*

4/16/18  
Date

  
Park Management Plan Administrator

4/17/18  
Date

**FOR INFORMATION:**

PRD – SECTION CHIEFS

MSAPC – STEWARDSHIP SUBCOMMITTEE

NRC – MICHIGAN STATE PARK ADVISORY COMMITTEE

# Table of Contents

## **1.0: Introduction**

**1.1 Planning Objectives**

**1.2 Plan Process Overview**

**1.3 Planning Team**

**1.4 Summary of Stakeholder and Public Input**

## **2.0: Overview of Phase 1 Plan**

**2.1 Significance Statements**

**2.2 Management Zones**

**2.3 Changes since Phase 1 Plan**

## **3.0: 10-Year Action Goals**

## **Appendices**

**Appendix A: Legal Mandate Updates**

**Appendix B: Public Input Summary**

**Appendix C: Planning Team Meeting Summary**

# 1.0 Introduction

Sleeper State Park (SSP) is a 787-acre park located on the Saginaw Bay of Lake Huron in Huron County, Michigan. The park is in Lake Township, with the closest town of Caseville being 5 miles away. The closest metro area is Bay City, which is 53 miles west of the park.

Due to its location in Michigan's "thumb", visitors to this park can view the sunrises and the sunsets on the bay. Other unique features of this park are the ancient dune forests and the secluded campground.

The General Management Plan (GMP) guides the future long-term management of Sleeper State Park, and is based on the mission of the Parks & Recreation Division (PRD): "to acquire, protect and preserve the natural and cultural features of Michigan's unique resources, and to provide access to land and water public recreation and education opportunities".

## 1.1 Planning Objectives

The objective of the GMP is to bring together Parks and Recreation Division staff, representatives from other DNR divisions, stakeholders and the public into a planning process that directs management decisions and implementation strategies for the park.

A GMP develops as a result of a series of planning steps, with each step building upon the previous.

- Phase 1 (completed September 2011) presents a 20-year management zone plan and defines the purpose and significance of the park.
- Phase 2 (this document) identifies 10-year action goals to be accomplished in the park as a whole and in each of the management zones.
- Five-Year Implementation Plan (future) breaks down the action goals to be accomplished in the first five years of the GMP into specific projects with potential funding sources
- Annual Work Plan addresses what will be accomplished in each year and what progress has been made throughout the previous year.

This phase 2 management plan for Sleeper State Park is directed by the phase 1 plan and establishes long-range (10-year) action goals for the park as a whole and for each of the defined management zones. Action goals are recommended that address the following categories:

- Natural Resources
- Historic/Cultural Resources
- Recreation Opportunities
- Education/Interpretation Opportunities
- Management Focus
- Development

## 1.2 Plan Process Overview

The Sleeper State Park planning team met periodically over a ten month period, beginning in August 2016. For this Phase 2 plan, the first step was to review the Phase 1 GMP to assure that no conditions have changed that would result in the need to amend the overall guiding document. The Phase 1 GMP for Sleeper State Park was approved on September 19, 2011. The planning team completed the required 5-year review of the Phase 1 GMP and determined that no changes were needed.

Stakeholder and public input was sought throughout the planning process to ensure the DNR is responsive to its partners and visitors. Stakeholders were invited to provide input early in the planning process through a workshop designed to identify strengths, weaknesses and opportunities at Sleeper State Park. The planning team used this information to guide the development of the draft phase 2 plan. The public was invited to comment at a Public input meeting to review the draft plan. The draft plan was also available on-line and comments were accepted via Email. The planning team reviewed all of the comments received before recommending the final plan for adoption.

## 1.3 Planning Team

This Phase 2 General Management Plan was developed with valuable input and expertise of the planning team. Please refer to Appendix C for a Summary of the planning team meetings.

NAME	TITLE	ORGANIZATION/INSTITUTION
Jodi Nieschulz	Unit Supervisor	DNR PRD
Debbie Jensen	Management Plan Administrator	DNR PRD
Matt Lincoln	Lands Program Manager/Plan Administrator	DNR PRD
Glenn Palmgren	Stewardship Ecologist	DNR PRD
Lisa Gamero	Stewardship Cultural Resource Specialist	DNR PRD
Bill Doan	District Supervisor	DNR PRD
Scott Cook	Regional Field Planner	DNR PRD
Amy Swainston	Trail Specialist	DNR PRD
Kathrin Schrouder	Fisheries Biologist	DNR Fisheries
Sgt. Thomas Brown	Conservation Officer	DNR Law Enforcement
Don Bonnette	Wildlife Technician	DNR Wildlife
Earl Cole	Fire Officer	DNR Forest Resources
Janet Canode	Education Unit Manager	DNR Marketing and Outreach
Peter Rose	Geologist	DNR Minerals
Dean Anderson	State Archeologist	MSHDA*
Wayne Lusardi	Marine Archeologist	MSHDA*

\*Michigan State Housing and Development Authority

#### **1.4 Summary of Stakeholder and Public Input**

A Stakeholder Workshop was held on November 10, 2016 at the Sleeper State Park Outdoor Center. A total of 58 invitations were sent to government, non-profit and business organizations associated with or having an interest in Sleeper State Park. Of those invited, a total of 11 participants represented organizations from around the region and provided input, identifying Strengths, Weaknesses, Opportunities and Threats related to the park.

Strengths identified by stakeholder representatives in attendance included the park's relationship to Port Crescent State Park and local communities, the park's annual harvest festival, and the flora/fauna found in the park. Recreation amenities identified as strengths include cross-country skiing, camping, beach, Outdoor Center, Sand Road, and hiking trails. Another strength identified was the pedestrian bridge over M-25 from the campground to the beach.

Weaknesses identified by stakeholder representatives included lack of water hook-ups in the campground, trailhead identification and wayfinding, day use accessibility, and Outdoor Center facilities including closed cabins. Additionally, the Michigan Natural Features Inventory information is not available to the public for Sleeper State Park. Invasive species control was also identified as a potential weakness along with park managers not living at the park which causes a potential lack of availability for park guests.

Many opportunities were identified by stakeholders, which included renovating the cabins at the Outdoor Center, limited winter camping, expanding events at the park, provide water hook-ups at the campground and offer larger sites, provide tent only sites, and connecting Port Crescent State Park to Sleeper State Park with a trail. Other opportunities identified involved strengthening partnerships and marketing for the park, including collaboration with local community involvement, schools, local nature centers, and Native Americans.

Threats to the park identified by the stakeholders included invasive species, air quality, tree diseases, climate change, e-coli, and changing lake levels.

A Public input meeting was held on June 15, 2017 at the Sleeper State Park Outdoor Center to review the draft plan. A press release was distributed to 13,623 recipients as well as 58 stakeholders one month in advance of the meeting. Attendees included representatives from Lake Township and the Tip-A-Thumb Canoe Rental. Both were supportive of the goals identified. Comments received included support of a trail connection between Port Crescent and Sleeper State Parks, support of working with local partners to improve park infrastructure and support for deterring illegal ORV use along Sand Road.



## 2.0 Overview of Phase 1 Plan

The Phase 1 GMP for Sleeper State Park (SSP) approved on September 19, 2011, defined significance statements and assigned management zones to the land. Below is a brief summary of the primary elements of the phase 1 plan.

### 2.1 Significance Statements

Sleeper State Park was determined to be significant for the following reasons:

1. Sleeper State Park contains undisturbed wooded dune/swale complex and globally rare oak-pine barrens.
2. The park is adjacent to the 2,000-acre Rush Lake State Game Area making it feel like a larger 2,700 acre complex.
3. There is potential archaeological significance within the park.
4. The park serves as a stop for bird migration, notably for sand hill cranes, and birds of prey.
5. The Outdoor Center was built by the Civilian Conservation Corps (CCC) and provides unique recreation and retreat facilities, as well as an opportunity for interpretive activities related to the CCC.
6. The park features ½-mile shoreline and undisturbed beach ridges. The shoreline is an important part of the Tip of the Thumb Heritage Water Trail and presents significant opportunity for university shoreline research.
7. The park is uniquely situated such that visitors can view both sunrise and sunset during the peak season.
8. The park is five miles from the City of Caseville and enjoys a mutually beneficial relationship with local festivals and events, such as the City's annual "Cheeseburger Festival."

## 2.2 Management Zones

Considering the identity and significance of SSP, Management Zones have been assigned to each area of the park. From a palette of nine standard zones, six were applied to SSP. A condensed review of the Management Zones follows. A thorough description of each Management Zone can be found in the Phase 1 GMP.

- o Primitive Zone comprises approximately 606 acres, or 77%, and reflects a desired condition that emphasizes the natural resources. This zone preserves and protects the unique dune/swale complex found in this park.
- o Backcountry Zone comprises approximately 90 acres, or 11%, and emphasizes resource quality over recreation, but allows for modification of the landscape to allow for moderate levels of active recreation uses. This zone applies to the existing hike/bike trail system and to a future trail connection to Sand Road.
- o Developed Recreation Zone comprises approximately 84 acres, or 11%, and allows active recreation with high density of use conducted in areas not designated for natural resource significance. In this zone, recreation dominates with natural resource attributes enhanced as possible. The campground, the Outdoor Center complex, and day-use swimming and picnic areas are in this zone.
- o Administrative Services (Visitor Services) Zone comprises approximately 8 acres, or 1%, and encompasses the developed areas required for program administration and operations. This zone includes the park headquarters and maintenance facilities that support the business of running a state park.
- o Cultural Overlay Zone covers 787 acres, or 100%, and addresses the overall setting in which is found non-structural evidence of the traditions, beliefs, practices, lifeways, arts, crafts and social institutions of any community. The underlying management zones will still apply.
- o Scenic Overlay Zone comprises approximately 9 acres, or 1%, and recognizes that there are aesthetic qualities to be preserved and protected in the park. This zone recognizes the scenic value of the lakeshore along Lake Huron. The underlying management zones also apply.

## **2.3 Changes Since Phase 1 Plan**

### Clarification of Outdoor Center History

The Civilian Conservation Corps constructed the cabins originally at another location. These cabins were moved to the Sleeper State Park Outdoor Center in 1948, upon which a mess hall and kitchen was constructed. In 1975, the old mess hall and kitchen were replaced with the main outdoor center building.

### Development Projects:

Since the Phase 1 General Management Plan was adopted, the cabins at the Outdoor Center have been deemed unsafe and have been closed for public use. Plans are underway to restore several of the cabins in a phased approach.

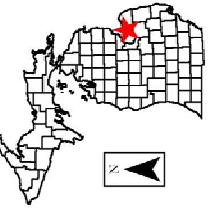
### Community Projects and Events:

1. There is community discussion of a trail connecting Port Crescent and Sleeper/Port Austin and Caseville.
2. The park participates in the annual Parade of Tropical Fools (Cheeseburger Festival)

### Boundary

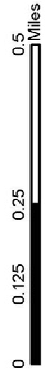
The state park's 2004 Project Boundary approved by the Natural Resource Commission (NRC) includes land owned primarily by private residential owners. A Project Boundary is a geographic area in which the DNR is seeking to acquire property that supports the mission of the DNR on a willing buyer/willing seller Basis. The planning team evaluated land within the 2004 Project Boundary to determine whether it still possessed both natural resource and recreational value, and would complement existing land within Sleeper State Park.

The planning team recommended that land to the south of the park should be removed from the Project Boundary due to the minimal natural resource and recreation value associated with the park and to increase park management efficiency. The areas recommended for removal are shown on the map that follows.



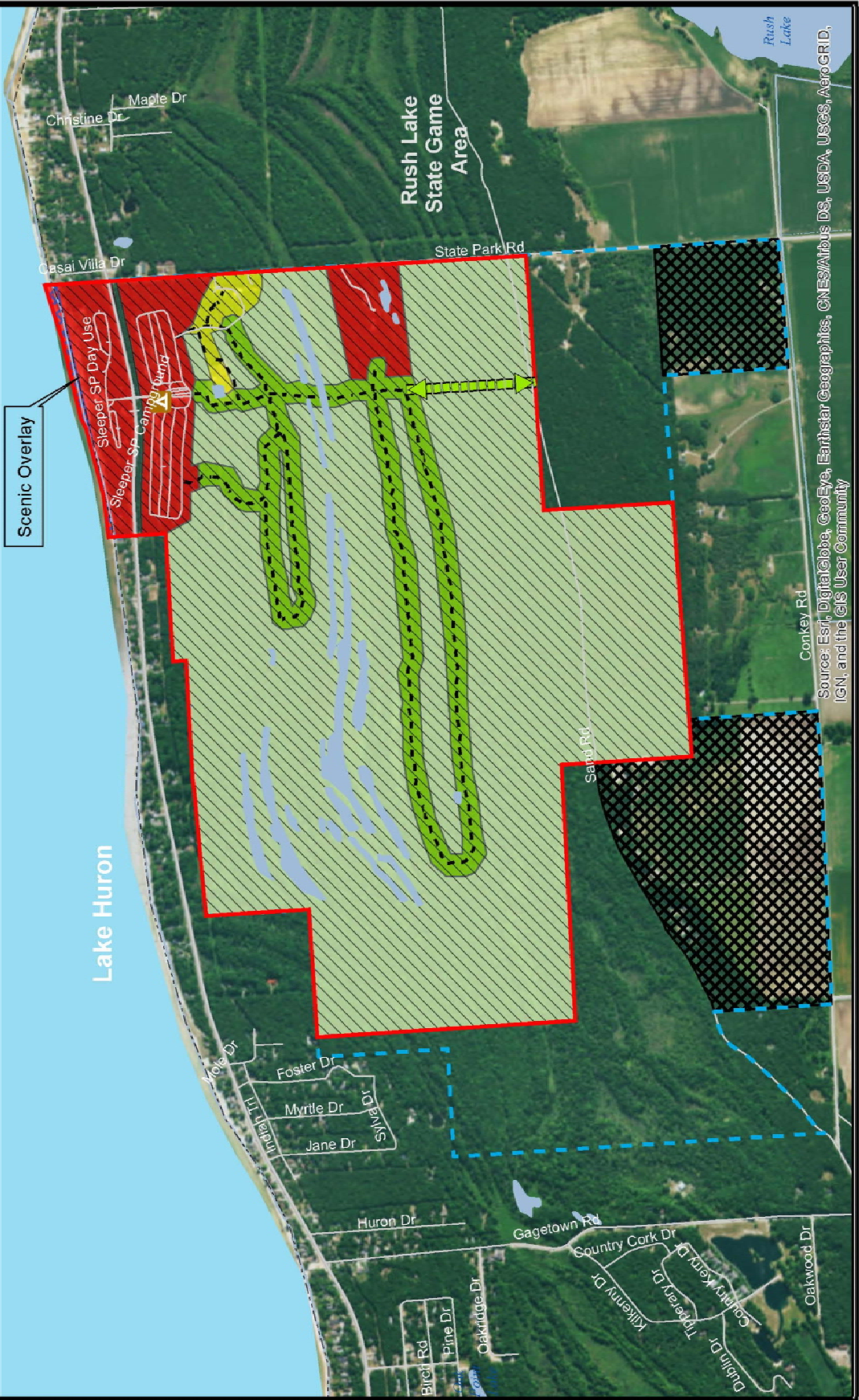
Updated 10/24/17

# Sleeper State Park Management Zones & Boundary Map



- PRD Ownership Boundary
- Sleeper SP 2004 Project Boundary
- Recommended for Removal
- Roads
- Highway
- Designated Hiking Trails
- Administrative Services
- Backcountry
- Developed Recreation
- Primitive
- Scenic Overlay
- Cultural Landscape Overlay
- Trail Connection

\*A project boundary is a geographic area in which the DNR is seeking to acquire property that supports the mission of the DNR on a willing seller/willing buyer basis.



Source: Esri, DigitalGlobe, GeoEye, Earthstar Geographics, CNES/Airbus DS, USDA, USGS, AeroGRID, IGN, and the GIS User Community



### 3.0 10–Year Action Goals

The Action Goals proposed for Sleeper State Park were developed by the planning team in response to stakeholder and public input and in context with the core values and guiding resources discussed in Phase 1 of this plan. One of the priorities identified in this plan is to improve the Outdoor Center by restoring existing cabins, improving restrooms, and offering additional lodging options in order to attract a new generation of visitors. Other actions relate to strengthening the identity and unique aspects of the park and promoting these assets to attract new visitors to the park and the area. These actions are supported by the recommendations of the major planning efforts guiding recreation in Michigan, including the Michigan Statewide Comprehensive Outdoor Recreation Plan (SCORP), the Blue Ribbon Panel Report to Governor Snyder. The Governor’s Economic Prosperity initiative is another illustration of the importance of planning regionally. Sleeper State Park is located in Economic Prosperity Region #6. Other improvements proposed will continue to maintain, improve and expand the recreation opportunities available while also managing and protecting the natural and cultural resources of the park.

The planning team has developed 10-Year Action Goals that it believes are necessary to guide management and development within the park as a whole and the five designated management zones in order to achieve the desired user experience. For each management zone in the plan, action goals are recommended that address the following categories:

- Natural Resources
- Historic/Cultural Resources
- Recreation Opportunities
- Education/Interpretation Opportunities
- Management Focus
- Development

Management Plans do not guarantee future PRD funding to implement them, but are intended to be realistic in terms of budget realities. PRD will seek internal funding, alternative funding sources, partnerships and other potential mechanisms for implementing the desired future conditions defined in this plan.



Sandcastles on the beach



Deer on the beach

## General Action Goals

**Many of the 10-Year Action Goals for Sleeper State Park are general in nature and apply within all of the management zones. These often deal with park-wide issues, such as invasive species control, universal access, developing Stewardship, Wildfire and Emergency plans, or marketing the park's many recreational opportunities to a wider audience of potential users. Many of the overall maintenance and operational issues of running a state park also result in the need for actions across all zone boundaries, such as law enforcement.**

Action Goals	Target Completion Date	Program Input From	Responsible Program Position
<b>Natural Resources</b>			
Implement invasive species control, with a strong emphasis on phragmites and Oak Wilt control, early detection and rapid response. Monitor roads, trails, and any new development sites for possible invasive species introductions.	Ongoing	Park Manager Stewardship	Park Manager
Work with local partners to restore natural communities in the park upon completion of the Stewardship Plan.	Ongoing	Park Manager Stewardship Local Partners	Park Manager
Inventory and survey invasive species at the park in collaboration with local partners	3-5 years	Park Manager Stewardship Local Partners	Park Manager
Develop a Natural Resource Stewardship Plan for the park	5-8 Years	Park Manager Stewardship	Stewardship Ecologist
<b>Recreation Opportunities</b>			
Support local efforts to explore routes for a trail between Port Crescent and Sleeper State Parks	Ongoing	Park Manager Local Partners Trails Specialist	Local Partners
Maintain and enhance opportunities for hunting/fishing/gathering/trapping/birding	Ongoing	Stewardship Wildlife Park Manager Fisheries	Park Manager
Promote and maintain Tip of the Thumb Heritage Water Trail connections between Port Crescent and Sleeper State Parks in collaboration with local partners	Ongoing	Park Manager Marketing & Outreach Local Partners Trails Specialist	Park Manager
Explore cross-promotion and connection opportunities with the adjacent Rush Lake State Game Area	1-3 years	Wildlife Park Manager	Park Manager

Action Goals	Target Completion Date	Program Input From	Responsible Program Position
<b>Historic/Cultural Resources</b>			
Continue monitoring archaeological and cultural resources	Ongoing	Park Manager Stewardship State Archaeologist	Cultural Resource Analyst
Review all proposed earthwork activities for potential impact on historic/cultural resources	Ongoing	Stewardship Regional Planner State Archaeologist	Cultural Resource Analyst
<b>Education/Interpretation Opportunities</b>			
Continue to provide quality interpretation and education and explore opportunities to expand programming in partnership with the Huron Nature Center	Ongoing	Park Manager Stewardship Marketing & Outreach Huron Nature Center Local Historical Societies	Marketing & Outreach
<b>Management</b>			
Review and update Wildfire Plan and Emergency Plan	Annually	Park Manager Stewardship Forest Resources	Park Manager
Work with adjacent landowners located within proposed General Management Plan project boundary should they wish to divest of their property	Ongoing	Park Manager Stewardship Lands Manager	Lands Manager
Continue to participate in community events	Ongoing	Park Manager	Park Manager
Continue to explore and develop revenue generating opportunities that are sustainable	Ongoing	Park Manager Marketing & Outreach	Park Manager
Continue social media presence and improve web-based outreach	Ongoing	Park Manager Marketing & Outreach	Park Manager
Continue to complete and comply with annual safety inspections and plans	Ongoing	Park Manager	Park Manager
Continue DNR marketing effort at local level and within the park, collaborating with local recreation and education providers for cross-promotion purposes	Ongoing	Park Manager Recreation Programmer Marketing & Outreach	Park Manager
Continue to collaborate with community partners to support the mutual goals of PRD and the local partners	Ongoing	Park Manager Local Partners	Park Manager

Action Goals	Target Completion Date	Program Input From	Responsible Program Position
Survey and mark west boundary of the park	1 year	Park Manager	Park Manager
Work with local communities to install wayfinding signage for park in downtown area	1-3 years	Park Manager Local Partners	Park Manager

### Primitive Zone

The Primitive Zone emphasizes the natural resources of the area. It is managed to allow only dispersed, low frequency and low impact recreational use in the zone. Maintaining a high quality natural resource condition dictates the extent to which recreational improvements or users are allowed. For this reason, native species and natural processes take precedence over visitor accommodation. The following 10-Year Action Goals propose only very low levels of development, in order to protect the important habitat. Only foot traffic is allowed in this zone.

Action Goals	Target Completion Date	Program Input From	Responsible Program Position
<b>Natural Resources</b>			
Protect and restore Oak Pine Barrens ecosystem through the restoration and management of sensitive areas and areas damaged by illegal Off-Road Vehicle use	Ongoing	Stewardship Park Manager Trails Section	Park Manager
<b>Recreation Opportunities</b>			
Maintain and enhance opportunities for hunting/gathering/trapping/birding	Ongoing	Stewardship Wildlife Park Manager	Park Manager
<b>Management Focus</b>			
Control illegal trail creation	Ongoing	Park Manager Stewardship	Park Manager



## Backcountry Zone

The character of the Backcountry Zone is intended to be natural, with minimal evidence of human impact. While the Primitive Zone is highly restrictive for recreational use and human impact, Backcountry permits a slightly higher intensity of use. The Zone allows for increased activity including slight modifications of the landscape (trail development) to accommodate that use where it is consistent with protection of the resource. Tolerance for natural resource impacts is low in the Backcountry Zone and the 10-year Action Goals for this zone focus primarily on improving existing facilities rather than new development.

Action Goals	Target Completion Date	Program Input From	Responsible Program Position
<b>Recreation Opportunities</b>			
Maintain existing trails and trail signage	Ongoing	Park Manager	Park Manager
<b>Management Focus</b>			
Continue to maintain trail system, encouraging users to be good stewards of the land in order to minimize impacts to adjacent oak pine barrens	Ongoing	Park Manager	Park Manager

## Developed Recreation Zone

Active recreation with high density of use, conducted in areas not designated for natural resource significance, is characteristic of the Developed Recreation Zone. In this zone, recreation dominates with natural resource attributes enhanced where possible. The day-use beach area, modern campground and the Outdoor Center are located within this zone. The 10-Year Action Goals direct management decisions and development projects designed to promote and support these diverse visitor activities.

Action Goals	Target Completion Date	Program Input From	Responsible Program Position
<b>Recreation Opportunities</b>			
Change doors on bathrooms at Outdoor Center meeting hall to allow access from outside when meeting hall is not in use	1-3 years	Park Manager District Supervisor Field Planner	Park Manager
Designate a dog beach	1-3 years	Park Manager District Supervisor Field Planner	Park Manager
Evaluate cost benefit and demand of Outdoor Center and restore cabins for rental as warranted, removing Outdoor Center cabins that are beyond repair	1-5 years	Park Manager District Supervisor Field Planner	Park Manager

Action Goals	Target Completion Date	Program Input From	Responsible Program Position
Evaluate cost benefit and demand of Outdoor Center and develop rustic camping opportunities at former cabin sites as warranted.	5-7 years	Park Manager District Supervisor Field Planner	Park Manager
Develop an accessible playground within the day-use area in collaboration with local partners	5-10 years	Park Manager Field Planner Local Partners	Local Partners
Explore innovative approaches to increase visitation to the day use area	1-3 years	Park Manager Field Planner Local Partners	Park Manager
<b>Management Focus</b>			
Promote mid-week camping	Ongoing	Park Manager Marketing & Outreach District Supervisor	Park Manager
Renovate showers at campground	1-3 year	Park Manager District Supervisor	Park Manager
Improve day use area accessibility	1-3 years	Park Manager Field Planner	Field Planner
Repair roof on day use pavilion	1-3 years	Park Manager District Supervisor	Park Manager
Repair roof on beach house	1-3 years	Park Manager District Supervisor	Park Manager
Chip seal and repair campground and day-use roads	5-10 years	Park Manager District Supervisor Field Planner	Park Manager
Improve beach accessibility, including wall and ramp improvements	5-10 years	Park Manager Field Planner	Field Planner

### Administrative Services Zone

**This zone encompasses the developed areas required for program administration and operations. It includes the headquarters offices and maintenance facilities with the associated land required to conduct the business of running Sleeper State Park.**

Action Goals	Target Completion Date	Program Input From	Responsible Program Position
<b>Management Focus</b>			
Install trailhead signage and designate parking for hikers and cross-country skiing at park headquarters	1 year	Park Manager	Park Manager

# APPENDIX A – LEGAL MANDATES UPDATE

Legal mandates are identified that serve to further guide the development of the Phase 2 General Management Plan. For our planning purposes, the term “Legal Mandates” refers not only to federal and state law, but also the administrative tools of “Policy” and “Directive” of the Natural Resource Commission, the Department of Natural Resources (DNR), and the Parks and Recreation Division. Examples include Orders of the Director, Parks and Recreation Areas State Land Rules and other laws, commission orders, and rules or directives that apply to the recreation area.

Legal mandates applicable to Sleeper State Park were identified for the Phase 1 General Management Plan. The legal mandates listed in Appendix A of the Phase 2 General Management Plan provide a supplement to the legal mandates previously identified in the Phase 1 General Management Plan and should be referred to concurrently.

## LAND USER ORDERS

### **5.16a Entry, use and occupancy of certain state parks, recreation areas and scenic sites, prohibited conduct.**

Order 5.16a (1) A person shall not do any of the following:

- (a) Enter any of the following state-owned lands with a motor vehicle unless a valid Michigan recreation passport has been purchased and affixed to the vehicle:

(74) Sleeper SP, Huron county.

## FEDERAL STATUTE

<b>ENDANGERED SPECIES ACT, 1973</b>
This Act authorizes the determination and listing of species as endangered and threatened, and prohibits unauthorized taking, possession, sale and transport of endangered species
<b>BALD AND GOLDEN EAGLE PROTECTION ACT, 1940 AND AMENDMENTS</b>
This Act prohibits anyone, without a permit issued by the Secretary of the Interior, from "taking" bald eagles, including their parts, nests, or eggs. The Act defines "take" as "pursue, shoot, shoot at, poison, wound, kill, capture, trap, collect, molest or disturb." "Disturb" includes actions that may result in injury to the eagle, a decrease in its productivity or nest abandonment.

**NATIONAL HISTORIC PRESERVATION ACT, 1966 AS AMENDED**

This is the primary federal law governing the preservation of cultural and historic resources in the United States. The law establishes a national preservation program and a system of procedural protections which encourage the identification and protection of cultural and historic resources of national, state, tribal and local significance.

**STATE STATUTE**

**NATURAL RESOURCES AND ENVIRONMENTAL PROTECTION ACT (NREPA) AND AMENDMENTS**

PA 451 of 1994, Part 325 Great Lakes Submerged Bottomlands	A permit is required for all filling, dredging, and placement of permanent structures (i.e., docks, piers, pilings, etc.) below the "ordinary high water mark" and on all upland channels extending landward of the "ordinary high water mark" of the Great Lakes.
PA 451 of 1994, Part 741 State Park System	The department shall create, maintain, operate, promote, and make available for public use and enjoyment a system of state parks to preserve and protect Michigan's significant natural resources and areas of natural beauty or historic significance, to provide open space for public recreation, and to provide an opportunity to understand Michigan's natural resources and the need to protect and manage those resources.
PA 451 of 1994, Part 761 Aboriginal Records and Antiquities	The state reserves the exclusive right and privilege to all aboriginal records and other antiquities including those found on the bottomlands of the Great Lakes.
PA 35 of 2010, Part 741 Recreation Passport	This act amended the Michigan Motor Vehicle Code to provide for a State Park and State-operated public boating access site "Recreation Passport" that a Michigan resident may obtain by paying an additional fee when registering a motor vehicle.

## **WILDLIFE CONSERVATION ORDERS**

### **State Parks and Recreation Areas**

#### **7.33 Sleeper state park, hunting and trapping allowed; exception.**

Sec. 7.33 Hunting and trapping shall be allowed during the established seasons on all state-owned lands in the dedicated boundary in section 17 and sections 19 to 22, T18N R11E, in sleeper state park except for all those state-owned lands in section 17 and the NE 1/4 of section 20, T18N R11E.

History: Eff. Mar 31, 1989.

#### **REMOVED:**

Sec. 3.412. The early September season for taking Canada geese shall be September 1 to September 15 in the Lower Peninsula and September 1 to September 10 in the Upper Peninsula, except as follows:

(7) Except as otherwise provided, all or portions of the following state parks, as described in chapter VII, shall be open from September 1 to September 10:

- (a) Port Crescent State Park.
- (b) Sleeper State Park.

## **STATE LAND RULES**

Parks and Recreation Areas – State Land Rules are issued by authority conferred on the Michigan DNR by Section 504 of 1994 PA 451 MCL 324.504. The rules cover entry, use and occupation of state lands and unlawful acts.

# APPENDIX B – PUBLIC INPUT SUMMARY

Over the duration of the Phase 2 General Management Planning process, the Planning Team ensured a variety of opportunities for stakeholder and public input and feedback.

## **Stakeholder Workshop November 10, 2016**

A Strengths-Weaknesses-Opportunities-Threats (S.W.O.T.) analysis was performed at the workshop to gather information from stakeholders about the park to inform the Action Goals. Stakeholders are defined as representatives of organizations that are associated with or have an interest in Sleeper State Park. A total of 58 stakeholder organizations were invited to attend. Of that, 11 representatives of those organizations attended the stakeholder workshop. The following is a record of the comments received.

### **STRENGTHS**

#### **Community and Partnerships**

- Affiliation/local partners
- Relationship w/ Port Crescent
- Stability/established park

#### **Facilities and Activities**

- Halloween festival
- Trails
- Year-round activities
- X-country ski trails
- Camping, nice place to gather
- Beach, easy to get to
- Pedestrian bridge over highway
- Outdoor center cabins
- Sand Road
- Park Maintenance

#### **Natural Resources**

- Flora and Fauna

### **WEAKNESSES**

#### **Facilities**

- Lack of water hook-ups in campground
- Trouble finding trailheads & where trails started
- Day-use accessibility (not as nice as Port Crescent)
- Cabins not usable
- Poor bathroom/shower facilities at Outdoor center

### **Natural Resources**

- Possible lack of invasive species control
- Native features inventor, lack of knowledge by public

### **Staff**

- Lack of on-site park managers (living at park)

## **OPPORTUNITIES**

### **Facilities and Activities**

- Restoration of cabins and outdoor center
- Limited winter camping
- Winter outdoor center use
- Bring back Pioneer Days
- Expand Halloween festival to more weekends
- Improvements to campground, larger sites and water hook-ups
- Rustic campground
- Trail connection to Game Area
- Connecting two parks with trail

### **Partnerships**

- Education/youth outreach/other visitors
- Partnerships with school districts
- Local efforts to restore
- Cater to groups interested in coming here, birders
- Friends group development, get local community involved
- Native American partnerships
- Collaboration with local parks/native centers

### **Marketing**

- Better park promotion
- Reduced fee during the week or other ways to bring in campers during the week

## **THREATS**

- Aging infrastructure
- Off-road vehicle, illegal use
- Level of use
- Adjacent land use
- Affordable Care Act
- Importance of funding parks to the State

### **Natural Resources**

- Fluctuating lake water levels
- Invasive species
- E-coli levels at beach
- Tree diseases, ash and oak issues
- Air quality
- Climate Change
- Development without Natural Features Inventory



## ATTENDEES

Name	Stakeholder Affiliation
Joyce Stanek	Port Austin Chamber of Commerce
Martha Thuemmel	Port Austin Historical Society
Mary Barnes	Port Austin Historical Society
Maryanne Williams	Lake Township Office
Ken Pechette	Tip of the Thumb Canoe Rental
Brannt Rousseany	Port Austin Township and Village
Laura Tull	Huron County EDC
Monica Essenmacher	Port Crescent Hawk Watch
Chris Boyle	Port Austin Kayak
Scott Whipple	Huron Intermediate School District
Karen Currie	Huron Intermediate School District
Scott Cook	DNR
Jodi Nieschulz	DNR
Betsy Kish	DNR
Lisa Gamero	DNR
Matt Lincoln	DNR

### **Tribal Outreach**

A letter was sent to the local tribal organizations explaining the Phase 2 GMP process and inviting them to contact the DNR staff if they would like a meeting scheduled. No responses were received.

### **Public Input Open House, June 15, 2017**

Members of the public were invited to learn about the Phase 2 General Management Planning process and comment on the Draft 10-Year Action Goals at a meeting held at the Sleeper State Park Outdoor Center from 6-8 p.m. The Draft Phase 2 Plan was also posted on the DNR's website and comments were invited via Email. A press release went out one month in advance of the open house to 13,623 recipients of the government-delivery system including 58 stakeholders associated with the park.



## Statewide DNR News

May 15, 2017

Contact: [Matt Lincoln](#), 517-284-6111

### **DNR hosts public meeting June 15 regarding phase 2 general management plan for Port Crescent and Sleeper state parks**

The Michigan Department of Natural Resources will host an open house Thursday, June 15, to invite public input on the draft phase 2 general management plan for Port Crescent and Sleeper state parks in Huron County. The open house will run 6 to 8 p.m. at the Sleeper State Park Outdoor Center, 6435 State Park Road in Caseville.

Both parks are located along Lake Huron's Saginaw Bay in Michigan's "thumb." The 787-acre Sleeper State Park features ancient dune forests and a secluded campground, and visitors can view both the sunrise and the sunset over the bay. The 600-acre Port Crescent State Park is easily accessible from M-25 and features 3 miles of sandy shoreline. The park contains unique natural features and a variety of recreational amenities, including waterfront campsites, excellent opportunities for fishing and birding and the largest sand dunes on the eastern side of Michigan.

The public meeting will begin with a short presentation of the draft plan, but the public is welcome to attend at any time during the two-hour period to review the planning material, provide comments and talk to DNR staff. Comments also can be made via email through June 19 to Matt Lincoln at [lincolnm@michigan.gov](mailto:lincolnm@michigan.gov).

The phase 2 general management plan defines a long-range (10- to 20-year)



planning and management strategy that will assist the DNR Parks and Recreation Division in meeting its responsibilities to 1) protect and preserve the site's natural and cultural resources, and 2) provide access to land- and water-based public recreation and educational opportunities.

A link to the Port Crescent and Sleeper state parks draft phase 2 general management plan and additional information can be found on the DNR's General Management Plan website at [michigan.gov/parkmanagementplans](http://michigan.gov/parkmanagementplans).

For more information about the public meeting or the phase 2 general management plan, contact Matt Lincoln at 517-284-6111 (TTY/TDD711 Michigan Relay Center for the hearing impaired) or via email at [lincolnm@michigan.gov](mailto:lincolnm@michigan.gov). Persons with disabilities who need accommodations for the meetings should contact Lincoln five days before the meeting.

**/Editors' note:** Accompanying photos are available below for download. Suggested captions follow.

**SleeperStatePark.jpg:** The ancient dune forests are a popular park amenity at Sleeper State Park. Park-goers are invited to a June 15 open house to learn about the second phase of the park's draft management plan.

**PortCrescent.jpg:** Park-goers are invited to a June 15 open house to learn about the second phase of the draft management plan for Port Crescent State Park, which includes future planning for 3 miles of shoreline and a number of recreational opportunities./

- [PortCrescent.jpg](#)
- [SleeperStatePark.jpg](#)

---

The Michigan Department of Natural Resources is committed to the conservation, protection, management, use and enjoyment of the state's natural and cultural resources for current and future generations. For more information, go to [www.michigan.gov/dnr](http://www.michigan.gov/dnr).



[MANAGE SUBSCRIPTIONS](#) | [UNSUBSCRIBE ALL](#) | [CONTACT US](#) | [FEEDBACK](#) | [HELP](#)

**DEPARTMENT OF NATURAL RESOURCES**  
**Management Plan Phase 2**  
**Public Input Meeting Agenda**  
**Port Crescent and Sleeper State Parks**  
Thursday, June 15, 2017, 6pm-8pm  
Sleeper State Park Outdoor Center  
6435 State Park Road  
Caseville, MI 48725



1. **Planning Team Introductions** (5 minutes)
  
2. **Overview of Phase 1 Plan and Presentation of Draft Phase 2 Plan** (20 minutes)
  
3. **Open House** (1.5 hours)
  - a. Review Action Goals on boards
  - b. Post-it notes are available to add comments and post on the related Action Goal
  - c. Invitation to talk to Planning Team members
  - d. See comment sheet below to provide additional comments
  
7. **Adjournment**

**For More Information:**

**DNR Management Planning Website:** [www.michigan.gov/parkmanagementplans](http://www.michigan.gov/parkmanagementplans)

**Email:** Matt Lincoln [lincolnm@michigan.gov](mailto:lincolnm@michigan.gov)

**Phone:** 517-284-6111

---

Name	Affiliation
John Hollista	Tip-A-Thumb Canoe Rental
Valerie McCallum	Lake Township

Comments received at the public meeting included the following:

1. It would be nice to start a friends group and/or partner with local builders to help renovate Outdoor Center infrastructure and other infrastructure at the park. Perhaps DNR could give these partners reduced rental rates at the cabins once they are complete.
2. Lake Township is supportive of a trail connection between Port Crescent and Sleeper State Parks; will need to work with Huron County.
3. Lake Township is supportive of getting rid of illegal ORV use along Sand Road. Perhaps increased DNR conservation officer presence could help.

No comments were received via Email.

# APPENDIX C – PLANNING TEAM MEETING SUMMARY

Over the duration of the General Management Planning process, the Planning Team held two on-site team meetings and two virtual meetings. These meetings were critical to the development of the Phase 2 General Management Plan and particularly the creation of the 10-Year Action Goals. Additionally, the meetings were an opportunity to review input received from stakeholders and the public.

## Overview of Planning Team Meetings

- **Team Meeting #1 August 30, 2016** – Located at Sleeper State Park Outdoor Center, the kick-off meeting was an opportunity for Planning Team members to introduce themselves to one another, review the Phase 2 General Management Plan schedule and process, review the Phase 1 General Management Plan, develop the stakeholder questionnaire and review any changes that have occurred since the Phase 1 General Management Plan was approved.
- **Team Meeting #2 December 13, 2016** –The Planning Team reviewed stakeholder meeting feedback and began to draft the 10-year action goals for the park.
- **Team Meeting #3 Go-To-Meeting January 30, 2016** – The Planning Team reviewed the refined the 10-year action goals for the park.
- **Team Review** – The Planning Team reviewed information gathered at the public input workshop and determined no additional changes to the plan based on the input gathered.

**Kick-off Meeting (Meeting #1)**  
**Phase 2 General Management Plans for**  
**Port Crescent and Sleeper State Parks**  
**Tuesday, August 30**  
**9:00am to 2:00pm**  
**Sleeper State Park Outdoor Center**

MINUTES

- 1) Welcome and Introductions - Present: Jodi Nieschulz, Lisa Gamero, Debbie Jensen, Scott Cook, Matt Lincoln, Scott Brown, Betsy Kish, Glenn Palmgren
  
- 2) Phase 2 General Management Plan Process and Schedule review
  - Discussed that Unit Managers will work with Matt throughout the process with responsibilities being shared
  - Matt to send link to unit managers for templates
  - Matt to set up website for the projects
  
- 3) Team Review of Phase 1 General Management Plan for each park.
  - Significance Statements review
    - Port Crescent State Park
      - discussion of cultural resources in the area and the re-using chimney bricks as an interpretive walk
      - lumber and sand mine history discussed
      - The designated Dark Sky Preserve should be highlighted in the Phase 2 plan as a new significance for the park.
  
    - Sleeper State Park
      - Team needs to touch base with Wildlife Don Bonnette due to the proximity of the State Game Area
      - Old Stagecoach route is an unimproved county road and provides access to the park, resulting in illegal ORV use in the oak pine barrens
      - The Outdoor Center is not historically significant due to the modifications to the complex over the years and is not on the national registry
      - Lisa will research the history of the CCC at this site and provide clarification of the significance statement found in the Phase 1 plan.
  
  - Project Boundary review
    - The team discussed changes to the dedicated boundary and recommended leaving the dedicated boundary at Port Crescent as it appears in the Phase 1 plan.
    - The team recommends refining the Sleeper State Park boundary to reflect

desired dune complex in the south.

- New maps need to be generated and included in the Phase 2 plan to reflect these changes and to correctly show the NRC approved and proposed project boundaries. Enlargements of areas of the map to show details will be considered.
- Management Zones review
  - Consensus is that the zoning maps are working well
  - There is a discrepancy on p. 19 and p. 5 with the acreage and % listed for the cultural resources overlay at Sleeper State Park. This should be noted in the Phase 2 plan.
- Trails review
  - Betsy highlighted trails that are not on in the GIS system.
  - Matt will contact Kim to get the trail map updated. A new trail map should be included with the phase 2 management plan maps.
  - Make sure trails are listed in GIS as dedicated hiking, biking allowed, dedicated groomed ski trails at Sleeper State Park, Hiking only at Port Crescent.
- Supporting Analysis review
  - Glenn to review flora and fauna sections and provide an updated list of rare species found at each park.
  - Discussion of additions to the timeline for each park (see park overviews below)

#### 4) Legal Mandates and Land Use Orders review

- Add WCO 7.31 and 7.33 and remove Section 3.412 both parks
- Add Dark Sky legislation legal mandate at Port Crescent

#### 5) Park Overviews

- Changes in the parks since the Phase 1 plan (Acquisitions, developments etc.):
  - Designated Dog Beach east of Pinnebog River mouth at Port Crescent
  - Entrance to day-use was re-routed at Port Crescent due to the river wash-out
  - Outdoor Center at Sleeper closed due to unsafe cabin conditions

- Current projects/ initiatives (Capital Outlay list/ WIP Database):

##### Sleeper State Park

- West boundary needs to be surveyed and marked
- Outdoor Center cabins plan includes the demolition and restoration
- Roof on the day use pavilion is leaking
- Roof on bathhouse just started leaking
- Dog Beach designation coming up soon
- Renovation of showers at campground building



- Day use and campground roads need chip seal and repair
- Walkway along the retaining wall at the beach needs to be replaced
- Desire for an accessible playground
- Need an ADA access walk to beach and picnic area
- Would like a camper cabin at the campground
- Water tanks are being replaced currently
- Always need Phragmites control

#### Port Crescent State Park

- Campground roads need to be fixed
- Contact station needs to be replaced
- West Toilet shower building replacement is on the Capital Outlay list
- Fishing platform needs to be removed and erosion needs to be Addressed, possibly using flat stones like at Oqueoc Falls
- A floating kayak launch would improve accessibility
- Day use toilet building needs to be replaced
- ADA access to the beach was discussed
- ADA hunting platform along M-25 is proposed
- There is a proposal to for a natural playscape at day-use area
- Day use well and pipes need to be replaced
- Waterlines at campground need to be improved
- Need 50 amp service in campground
- Always need Phragmites control
- Community projects and developments
  - There is discussion of a trail connecting Port Crescent and Sleeper/Port Austin and Caseville.
  - Parks participate in the Parade of Tropical Fools (Cheeseburger Festival)
  - Harvest Festivals (Port Crescent 1, Sleeper 2)
    - Opportunity for high schoolers to put on festival interpretation of old townsite history at Port Crescent.
  - Parks participate in the Port Austin July 4<sup>th</sup> parade
  - Caseville Fishing derby used to be hosted at Sleeper Outdoor Center when it was open, but now they stage in town. The fish cleaning station is still used by campers and anglers who fish outside of the park and bring their catch in for cleaning.

#### 6) Stakeholders were identified for the upcoming meeting

- Group identified stakeholders from Phase 1 and identified new ones.
- Tribes will be contacted and invited to participate

#### 7) Stakeholder workshop was discussed

- Team reviewed agenda and discussed location, time, and place.

- Will be scheduled either October 26, 27 or Nov. 1<sup>st</sup>, 2<sup>nd</sup>, Nov. 9 or 10 at the Sleeper State Park Outdoor Center 4-6pm or 5-7pm

8) Discussed report and document generating

- Scott volunteered Lori Ruff to assist

**Team Meeting #2 Minutes**  
**Phase 2 General Management Plan**  
**December 13, 2016**  
**9am - 12pm**

**Port Crescent and Sleeper State Parks**  
Port Austin Visitor Center

- 1) Attendees:** Matt Lincoln, Debbie Jensen, Betsy Kish, Jody Nieschulz, Amy Swainston, Scott Cook, Lisa Gamero, Sgt. Scott Brown, Glenn Palmgren
  
- 2) Review Meeting #1 minutes**  
Some minor corrections were noted.
  
- 3) Review Stakeholder Workshop feedback/ Brainstorm Action Goals**  
Input received at the stakeholder meeting held on November 10, 2016 was discussed, together with potential action items discussed at meeting #1 and the Capital Outlay list for each park.

Items discussed for action goal generation/brainstorming include:

Sleeper:

- Trailhead signage and parking designation for hikers (at headquarters)
- Stewardship Plan
- Sand Road illegal ORV damage restoration (survey has been completed) – currently damaging oak pine barrens
- Outdoor Center cabins – demolish some and fix up 4 for rental by next summer with electrical later
- Beach access, wall and ramp repairs
- Improve accessibility at day use area
- Change doors on bathrooms at Outdoor Center to allow access from outside when not rented.
- Phragmites control is ongoing.
- Invasive species survey needed – perhaps with local partners
- Camping didn't fill when more Halloween festivals (2 is good balance).
- Huron Nature Center runs year round programs. DNR interpreters run programs there. Cross promotion opportunities.
- Matt suggested that park promotion needs to start at the park, then MOD can help

- Discussion regarding promotion of water trails (Lake between 2 parks)
- Promote mid-week camping
- Potential for rustic camping opportunities at Outdoor Center, possibly on old cabin sites.
- Support local efforts to find routes for a trail between the two parks.
- Work with local partners to restore natural communities in the park
- Work with local groups like the Lions Club to help with park projects
- Discuss potential cross-promotion/ connections with Game Area (Don Bonnette)
- West boundary of the park needs to be surveyed and marked
- Roof on the day use pavilion needs to be fixed
- Roof on bathhouse needs to be fixed
- Dog beach designation
- Renovation of showers and campground building within one year
- Day-use and campground roads need chip seal and repair
- Accessible playground with local partners

Other items discussed include:

- MNFI natural communities survey has been updated
- Glenn to provide an updated T&E Species list for the Phase 2 General Management Plan
- Starting a Friends Group would be difficult due to seasonal residents around the park
- Relationship with State Game land – shown on maps but no designated trails due to funding restrictions.
- Campground is open until end of December. No real demand for winter camping (mini-cabin available and not rented very much) or Outdoor Center winter use.
- Affordable Care Act only gives part-time staff a 6-month window. – that’s it.
- Don’t get much demand for full-hook-up sites here
- Pioneer Days was spearheaded by local groups.
- Park experimented with the expansion of Halloween weekends and landed on 2 weekends as the best number of weekends.
- Native American interest at the park was more focused on Sanilac Petroglyphs
- Sand Road was an old stagecoach route

### Port Crescent

- Historic interpretation – continue and expand info. on old town site
- Stewardship plan and address non-native species
- Continue phragmites control
- Waterlines at campground need to be improved
- Protect important habitats for bird species on the Saginaw Bay Birding Trail
- Preserve and improve chimney/monument

- Hard surfaced pads in parking area for birders' and stargazing scopes
- Interpretive trail signage upgrades
- Continue to maintain water trail connections
- Continue Mother Nature's classroom program and other events at the park
- Replace day-use bathroom and pipes/well
- Renovate old carry-in boat launch (or install ADA)
- Explore partnerships with local businesses or transportation authority for canoe/kayak spotting
- Dune boardwalk improvements/renovation/replacement and ADA access to beach
- Remove fishing platform and improve shoreline to address erosion (check with Fisheries)
- Replace west campground toilet building
- Improve contact station
- Improve campground road surfacing
- State Park signage from local communities (from downtowns)
- Work with MOD on park promotion
- Test removal of park hours signs for dark sky viewing
- Education program for canoe kayak vendors (hand out bags for trash)
- Enhance relationship with Huron Nature Center and other area nature centers
- Promote Dark Sky Preserve designation and birders (check website)
- Continue to work with adjacent land owners within project boundary should they wish to sell
- Cross-promote with Chambers of Commerce
- Continue social media and improve web-based outreach
- Continue community outreach activities such as parades, events, etc.
- Keep an eye on river migration towards entrance road

Other items discussed include:

- Birding organization used to be more active
- Establishment of a friends group is difficult due to the seasonal nature of area residents
- Contact Fisheries Division (Jim Baker) to ask about fish activities in the park
- River mouth area where boaters pull-up is difficult to manage due to lack of land access
- Contact Caleb Putnum for birding opportunities
- ADA accessible hunting blind along M-25 is proposed in partnership with WLD.

#### **4) Schedule Meeting #3**

Following up from this meeting, Action Goals were generated both for each park as a whole and for each management zone. Look towards end of January for next meeting.

**Team Meeting #3 Minutes**  
**Phase 2 General Management Plan**  
**January 30, 2017**  
**9am - 12pm**

**Port Crescent and Sleeper State Parks**  
Go-To Meeting

**5) Attendees:** Matt Lincoln, Debbie Jensen, Betsy Kish, Jody Nieschulz, Amy Swainston, Scott Cook, Lisa Gamero, Glenn Palmgren, Bill Doan, Kathrin Schrouder

**6) Review Meeting #2 minutes**

Matt explained how the goals that were identified through the brainstorming in Meeting #2 were transferred to the standard template. No additional comments were made.

**7) Review and refinement of Draft 10-year action goals**

The team went through each goal as presented in the standard template and refined the list based on team input. Items discussed included:

Port Crescent State Park

1. Dark Sky Preserve hours and how to communicate park hours to the public
2. Potential parking lot on M-25 for trail access at Port Crescent Backcountry zone
3. Floating canoe/kayak structure
4. Chimney monument and how to address ruins
5. Sand mining operation interpretation opportunities
6. Timelines between goals and what's realistic, specifically toilet/shower building replacement, day-use bathroom improvements and contact station improvements.
7. Parking lot improvements for headquarters building.

Sleeper State Park

1. Cross-promotion with neighboring State Game Area
2. Restoration and protection of Oak Barrens ecosystem and controlling illegal ORV use
3. Encouraging good stewardship to trail users in order to minimize natural resource impact
4. Mid-week camping promotion

Both Parks

1. Responsible program position for specific goals and who would be on the team to provide input on the goals at both parks

2. Wayfinding signage from downtown areas for both parks
3. Stewardship related activities associated with invasive species.

**8) Scheduling public meeting**

Matt went over the next steps of putting together the draft plan and the process of taking the draft plan to the Section Chiefs for review and approval following review by the planning team. Team determined that the best time for the public meeting to be scheduled would be May or June. Matt will schedule something once these months get closer.