

West Lake Superior Management Unit



ISSUE 3

MARCH 2015

Staff:

George Madison

Senior Fisheries Biologist, Baraga
Operations Service Center

Steve Scott,

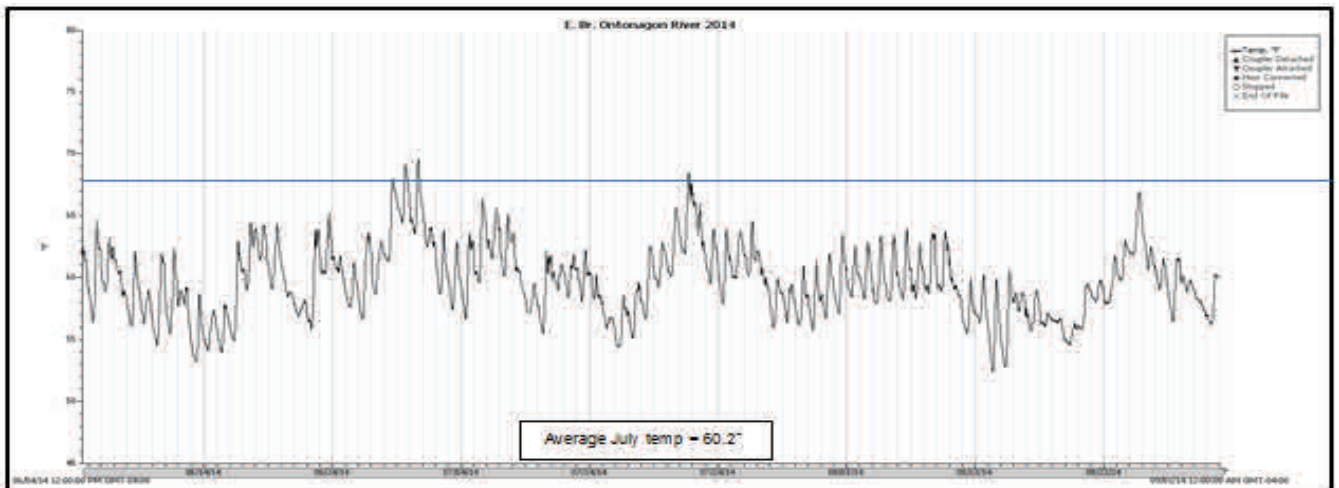
Lake Superior Unit Manager
Newberry Operations Service Center

2014-15 Western Lake Superior Management Unit Newsletter

The West Lake Superior Management Unit works as a combined staffing unit with the Northern Lake Michigan management unit with shared field technician staff who work out of the Crystal Falls DNR office. The following is a summary of the field work that has occurred during the last year.

It was a year for the brook trout!

Cool summer temperatures with abundant rainfall were ideal conditions for brook trout. Last winter's heavy snows provided good insulation for area streams and reduced the development of frazil ice (a collection of loose, randomly oriented needle-shaped ice crystals in water that is often lethal to trout). Last summer's stream temperatures were favorable for Western Upper Peninsula brook trout populations.

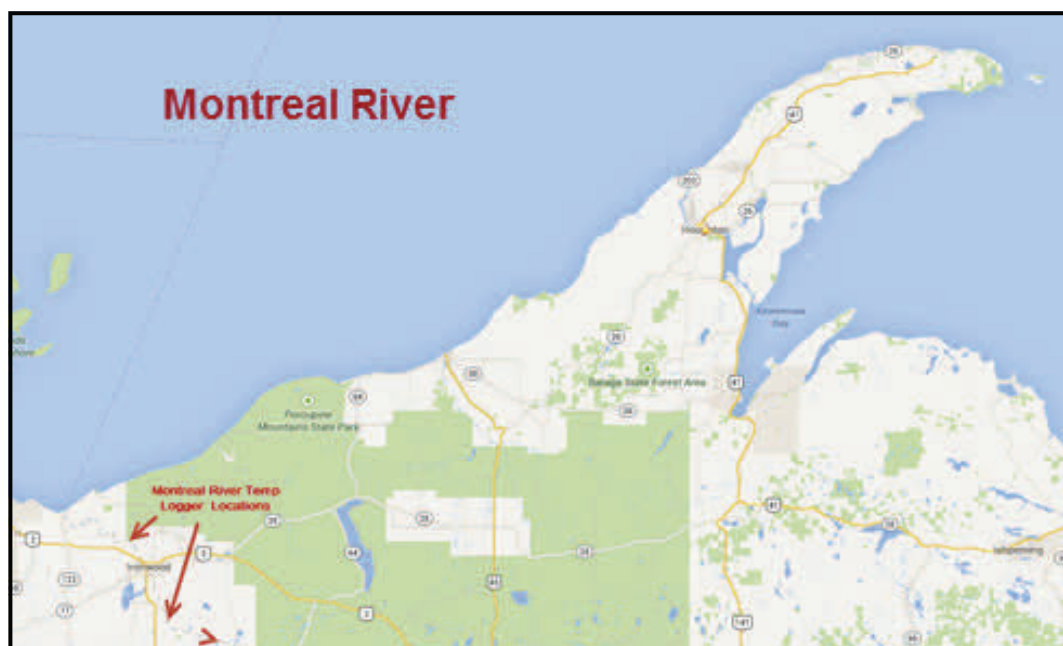
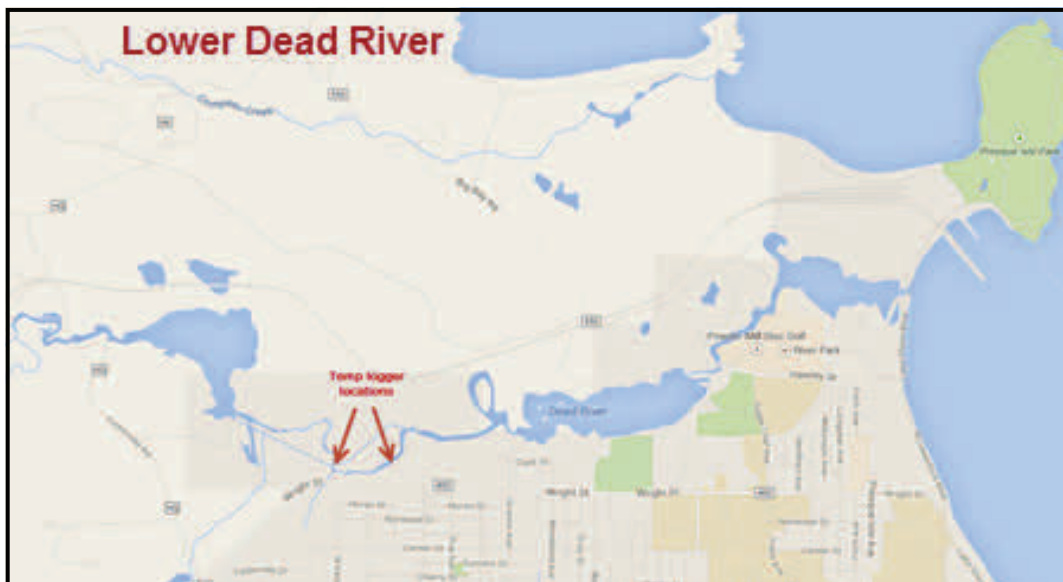


The graph above shows the summer water temperatures for the East Branch Ontonagon River, with a horizontal bar indicating the 68 degree threshold temperature for ideal trout residency. Temperature data were collected on nineteen Western Upper Peninsula trout streams during the summer of 2014, with all sites showing cooler than normal profiles.

Data collected during the Michigan Rivers Inventory indicates that streams with mean July temperatures (MJTs) greater than 68 degrees rarely supported sizeable trout populations. Brook trout are particularly sensitive to high water temperatures and are rarely found in streams with MJTs greater than 66 degrees.

Urban Trout Fishing Opportunities

It is recognized that most of the stream fishing opportunities for brook trout occur out in the woods, away from the city. Michigan DNR-Fisheries Division is looking to bring the fish to the city, and we found three rivers where we will experiment with this idea Lower Dead River (Marquette), Partridge Creek (Ishpeming), and Montreal River (Ironwood). Stream temperature studies during 2014 showed water temperatures suitable for trout occupancy, particularly in spring seepage areas. We propose a 6-year experimental stocking project to see if an urban coldwater fishery could be developed and if local residents would use these fisheries. With these rivers proximity to the city and homes, the goal of this project is to develop urban coldwater angling opportunities for youths, families, and citizens who live in these areas.



Master Angler Program

New beginning in 2015.....Master Angler entries will be based on fish length, and certified weights are no longer necessary. See Michigan DNR website for further details http://www.michigan.gov/dnr/0,4570,7-153-10364_52261_10948---,00.html.

Waters planned for surveys in 2015:

Status and Trend Surveys:

M. Br. Ontonagon River (Russ's Road) (year 1 of 3):

Teal Lake :

County

Houghton County

Marquette County

Discretionary surveys

Lake Angeline:

Smoky Lake (w/ Wisconsin DNR):

Marquette County

Iron County

Brook trout regulation evaluation

Dead River/Mulligan Creek:

Yellow Dog River:

N. Br. Otter River:

Marquette County

Marquette County

Houghton County

With two fisheries technician staff retirements prior to the 2014 field season, our summer fisheries survey program was somewhat reduced from the traditional schedule. For the West Lake Superior Management Unit, surveys were conducted on the following waters with the following comments about the results. For more detailed information regarding these surveys, please contact your local DNR office and we will send you the full survey report.

- Two Mile Creek (Ontonagon County): This survey site is a non-stocked fixed sampling site that receives three consecutive years of sampling followed by three years of non-sampling, and a repeat of three years of consecutive sampling. The year 2014 was year three of a second three-year survey rotation. Brook trout here are wild non-stocked fish with ages ranging from 0-3 years old with the majority of the brook trout being of Age 1 and Age 2. Legal sized brook trout (7 inches) represented 21% (N=31) of the 145 that were collected, while in the 2013 survey catch, 9.5% (N=19) of the brook trout were legal and in 2012 only 4% of the fish sampled (N=96) were legal. Population estimates generated for this 2014 survey suggests 2,004 brook trout per mile of creek, which is a good level of natural reproduction for wild trout.
- Elm River (Houghton County): Similar to Two Mile Creek, the Elm River survey site is a non-stocked fixed sampling site that receives three consecutive years of sampling followed by three years of non-sampling, and a repeat of three years of consecutive sampling. The year 2014 was year three of a second three-year survey rotation. Brook trout and rainbow trout (juvenile steelhead) are present in moderate to low numbers within this 1000-foot station. Age-0 to Age-4 brook trout were collected here with the predominance of the catch being Age -1 and Age-2 fish. Of the total 81 brook trout collected, 10% (N=8) were of legal size (7 inches) or larger. Of the rainbow collected here, most were Age-1 (N=12) and represented 23% percent of the catch. While there were no Age-2 rainbows present in the 2013 survey here, 12 Age-2 rainbows were collected in this 2014 survey effort. None of the rainbow captured in 2014 were of legal size (8 inches). Population estimates generated for this survey station resulted in calculations of (in fish/mile) 324 rainbow and 1,214 brook trout.
- Sturgeon River (Baraga County): For over twenty five years, yearling Wild Rose strain brown trout have been stocked at two locations on the Sturgeon River; 6,000 per year above Prickett Dam and 2,500 per year below Prickett Dam. The lower section of the Sturgeon River was surveyed in July 2004 and no brown trout were collected. The upper portion of the Sturgeon River at the Wilderness Gorge campground was surveyed in 2007 and only one 10 inch brown trout and three 2-6 inch brook trout were collected. Sampling occurred here again in 2014 and two brown trout at 9 inches each were collected. Annual stocking will be terminated in 2015.
- North Branch Otter River (Valley Road Location, Houghton County): An attractive wild non-stocked brook trout fishery exists in this river, with 22% of the fishery (N=13) consisting of legal sized fish.

Lake Independence, Marquette County:

Michigan DNR Fisheries staff from Crystal Falls conducted two electrofishing investigative fisheries surveys in 2012 and 2013 to assess this lake's fishery. A third more involved netting and electrofishing survey effort was used during May 2014 to estimate relative population abundance of walleyes within this lake.

Walleye is probably one of the most highly sought gamefish by sport anglers who fish Lake Independence. The results of this 2014 survey effort (attachment 1, catch results), combined with the results of past survey efforts show that a modest walleye fishery exists in this lake with the average size of walleye during the past 20 years averaging near the 15 inch minimum sportfish regulation size limit (see table next page). This near-15 inch average size suggests that the walleyes are being cropped when they approach legal size. Despite the abundance of near-15 inch walleye, 51% of the survey catch (N=557) were of legal size or larger. A mark and recapture walleye population estimate was generated using the Chapman-Petersen calculation method, which produced a numeric estimate of 2,720 walleyes (all inch groups). This population estimate equates to a total abundance of 1.46 walleyes per surface lake acre and 0.77 legal walleyes per surface lake acre. The 2014 legal sized walleye abundance estimate is lower than the statewide norm of two legal walleyes per acre, however Lake Independence has other predator fishes (northern pike and smallmouth bass) that are dependent on the forage base of yellow perch, shiner species, sculpins, and trout-perch.

A review of the net catch characteristics of the forage fishes shows that these fishes are being cropped at 4 inches and are in relatively low abundance. In particular, yellow perch, which have had periods of good abundance and size distribution in past years (21 inch State record caught here in 1947) now showed an average size of 4.9 inches and an overall catch of only 270 for the entire survey period. Only 11% of the perch caught were 6 inches or larger. With yellow perch being a spring spawning fish species, if their population was more abundant then we would have seen higher catches in the large mesh fyke nets.

Northern pike were represented in low numbers (N=95), these too being a spring spawning fish species. Northern pike provide an attractive sport fish, which display a strong fight when caught, so these are a popularly targeted fish when anglers are not having success with walleyes. The 22.4 inch average length of the pike caught during this survey is just short of the 24 inch minimum legal size limit, so these fish may be experiencing high angler retention. The representation of northern pike in the 30 inch to 42 inch size range shows that a quality sport fishing opportunity exists, and of the entire catch of northern pike, 28% consisted of legal size and larger fish.

Smallmouth bass were also present in moderate numbers (N=98) with 76% of the fish (N=74) being of legal size (14 inches) or larger. Similarly, in the 2006 netting survey, smallmouth bass composition reflected 78% of the fishery being of legal size or larger. During the 2014 survey, the average size of smallmouth was 15.7 inches in length, suggesting that these fish are not being cropped by sport angling.

White suckers did not show the abundance numbers as compared to the 2006 netting effort when 10,400 lbs. of these fish were netted and removed from the lake. In 2006 the average size of white suckers was 19.4 inches in length, while in 2014 the average size was 18.3 inches in length. During the spring of 2014, the Big Bay Sportsmen's Club netted and removed 410 white suckers via a weir at Alder Creek, while in 2012 they netted over 1,000 suckers.

Fisheries Survey Summary

Lake Independence (continued):

The historical percent-of-legal walleyes within the Lake Independence fishery and their average size depicted below.

	<u>Percent legal walleyes</u>	<u>Average size of walleyes (inches)</u>
2014	51%	14.7
2013	55%	15.2
2012	36%	14.6
2006	64%	15.5
1994	62%	14.4

Walleye stocking was conducted here in 2013 so the next stocking event should be scheduled for 2016.

Attachment 1, Catch results

Species	Lake Independence T51N R27W S24				Various				Various				Various			
	Walleye		Northern pike		Smallmouth bass		Bluegill		Pumpkinseed		Yellow Perch		Rock bass		White sucker	
Legal size (in)	>=15.00		>=24.00		>=14.00		>=6.00		>=6.00		>=7.00		>=6.00		>=	
Avg. length (in)	14.7		22.4		15.7		2.5		4.0		4.9		8.1		18.3	
Avg. weight (lb)	1.1		3.0		2.1		0.0		0.1		0.1		0.5		2.7	
	No.	Lb.	No.	Lb.	No.	Lb.	No.	Lb.	No.	Lb.	No.	Lb.	No.	Lb.	No.	Lb.
Total	1096	1208.0	95	286.7	98	207.5	1	0.0	8	0.6	270	14.0	91	41.0	204	559.7
No. legal	557		27		74		0		1		15		80		0	
% Legal size	50.82%		28.42%		75.51%		0.00%		12.50%		5.56%		87.91%			
Inch group																
0																
1																
2							1	0.0	2	0.0	3	0.0	1	0.0		
3									4	0.1	13	0.2	3	0.1	2	0.0
4	6	0.2									188	6.5	2	0.1	1	0.0
5					1	0.1			1	0.1	37	2.5	5	0.6	1	0.1
6											14	1.5	11	2.2	6	0.7
7			1	0.1					1	0.4	10	1.7	13	4.0	9	1.5
8	14	2.7	1	0.1	1	0.3					3	0.8	20	9.2	3	0.7
9	36	9.8	3	0.5							2	0.7	29	18.6		
10	16	5.9											7	6.1		
11	21	10.2			1	0.8									1	0.6
12	88	55.2			11	11.0									1	0.8
13	138	109.3			10	12.6										
14	220	216.6	1	0.6	10	15.7										
15	251	302.6	2	1.5	17	32.6										
16	181	263.8	1	0.9	16	37.1									4	7.0
17	97	169.0	3	3.4	13	36.0									17	35.7
18	21	43.3	3	4.0	14	45.9									37	91.8
19	3	7.3	4	6.3	4	15.4									36	104.7
20	2	5.6	14	25.9											50	168.9
21	2	6.5	13	28.0											25	97.4
22			12	29.8											10	44.7
23			10	28.5											1	5.1
24			10	32.4												
25			4	14.7												
26			2	8.3												
27			1	4.7												
28			1	5.2												
29			2	11.6												
30			1	6.5												
31			1	7.2												
32																
33			1	8.7												
34																
35																
36			1	11.4												
37			1	12.4												
38																
39																
40			1	15.7												
41																
42			1	18.3												
Sample total:	1096	1208.0	95	286.7	98	207.5	1	0.0	8	0.6	270	14.0	91	41.0	204	559.7

New events happening within the Western Lake Superior Management Unit

- Lake Angeline boat access site (Ishpeming):

Lake Angeline is located in the City of Ishpeming, Marquette County, and is approximately 100 acres in size. A land exchange was finalized in 2014 between the State of Michigan DNR and a private land owner. This land exchange will provide secured public use of Lake Angeline via access to the lake using Pine Street, located on the southwest side of the lake. During the summer of 2015, DNR Parks Division will construct a public boat launch site on the lake, incorporating a double width 36 foot wide launch ramp that will allow vehicles with trailers an additional comfort in maneuvering a long length (120 foot) of concrete launch ramp. One vault toilet with an ADA compliant gravel access route will also be placed at the site.

- Teal Lake muskellunge stocking (Negaunee):

The management of Teal Lake's fishery has traditionally focused on balancing the predator/prey ratio using tools such as sucker removals and walleye stockings. The lake, due to its vicinity to the population centers of Marquette/Negaunee/Ishpeming, receives heavy fishing pressure when the angling catch results are good. When fishing is good, anglers quickly crop down the walleye and perch populations, and white suckers then fill the vacant niche in the fishery. Once the suckers become numerous the sport fishery collapses, the DNR conducts another sucker removal project and the walleyes and perch once again become abundant. The boom and bust cycle is repetitive. It is not sound management to net this lake over and over again to remove suckers, and this repetitive removal of tons of suckers may actually be reducing the overall productivity of the lake by removing the nutrients that drive the fishery.

Teal Lake was stocked with 699 Great Lakes strain spotted muskies averaging 8.9 inches in length on October 13, 2014. Teal Lake is well suited for the establishment of a muskie population due to a stable abundant white sucker forage base. The muskellunge stocking is a management experiment and is an effort to more fully utilize the biomass of Teal Lake towards producing sport fish rather than having the lake's productivity go towards developing more white suckers. With Teal Lake's 466 acre size, the 2014 muskellunge stocking of 699 fall fingerlings (1.5/acre) should not interfere with the existing walleye, perch, and smallmouth bass fishery.

Muskellunge and walleyes coexist in many western UP, northern Wisconsin, and Minnesota lakes. We are not implying that muskies do not eat walleyes, however they prefer soft rayed fish (such as suckers), and their diet preferences are diverse enough to allow them to be compatible in lake systems without eliminating the walleyes. There is a large public interest in seeing more muskellunge fisheries in Michigan, and with the limited opportunities in Marquette County this is worth exploring towards the development of a new fishery. The Teal Lake muskellunge management plan has been discussed with the public at numerous public meetings and has received support of many anglers.

Michigan DNR Fisheries Division is planning to conduct a fisheries survey of Teal Lake during June 2015.

What's New (continued): Changes in trout regulations:

- Alberta Pond, (Baraga County):

Starting April 1, 2015, we will remove the Type-B sportfishing regulations from Baraga County's Alberta Pond, thereby effectively changing the current 10 inch minimum size limit for brook trout to 8 inches. The daily possession limit would remain the same at 5 fish of which no more than 3 may be of 15 inches or larger.

Alberta Pond is a 16-acre pond that is stocked every spring with one thousand 7-8 inch brook trout and also stocked almost every fall with two hundred 18-20 inch adult brook trout. This scenic pond is located on Highway US-41 and receives heavy fishing pressure year-round. As this pond has easy parking, a picnic table, and easy shore fishing from grass banks, the pond receives heavy fishing pressure. Travelers and anglers enjoy fishing here and it is common to see families shore-casting from the grassy banks. Anglers have indicated that many sub-legal fish are lost due to hooking mortality. This complaint seems reasonable, as brook trout need to live in the pond for at least a year before reaching the current minimum size of 10 inches. The removal of the Type-B sport fishing regulation here will change the minimum size limit for keeping trout from 10 inches to 8 inches. With an 8 inch minimum size, most of the trout will be of legal size before the end of their first open-water season in the pond. Of all the trout lakes in the region, this is one of the easiest places for kids to learn how to fish. The lower minimum size limit also will allow more of these young anglers to keep their fish.

A fisheries survey was conducted at Alberta Pond in October 2013 with the following catch results; 81 brook trout (5-13"), 552 bluegill (3-6"), 788 brown bullhead (3-12"), 386 common white suckers (3-15"), 43 yellow perch (4-13"), and a few fathead minnows and pumpkinseed sunfish were also caught.

Annual stocking of 1,000 yearling and 200 adult brook trout will continue here.

- Paulding Pond, (Ontonagon County):

Starting April 1, 2015, we will remove the Type-B inland trout lake designation from Ontonagon County's Paulding Pond, thereby effectively changing the current 10 inch minimum size limit for brook trout to 8 inches. The daily possession limit would remain the same at 5 fish of which no more than 3 may be 15 inches or larger.

Pauling Pond is a 7-acre trout impoundment that was developed by the construction of a stop-log dam in 1958. Over the past 57 years, the pond has been slowly filling in with sediments and weeds and correspondingly the quality of the trout fishery here has been diminishing. Angler use has also decreased. Various trout stocking programs have been tried here (brook trout or brown trout) with minimal returns to the anglers.

A netting survey of Paulding Pond in July 2013 found this pond to be choked with weeds and sediment, and water temperatures were very warm. An October 2013 netting of the pond found 14 brook trout (8-13"), 100 common white suckers, 9 brown bullheads, a few creek chubs and golden shiners. While the pond gets stocked every spring with ~575 yearling Assinica brook trout, it appears that this site produces a very minimal fishery. Annual stocking was discontinued here in 2014.



What's New (continued): Changes in trout regulations:

- Lake Fanny Hooe (Keweenaw County):

Starting April 1, 2015, we will remove the Type-B inland trout lake designation at Lake Fanny Hooe, thereby effectively changing the current 15 inch minimum size limit for lake trout and 12 inch minimum for splake to 8 inches. By removing the Type-B regulation, and having this lake be a non-classified inland trout water, the daily possession limit would remain the same at 5 fish of which no more than 3 may be 15 inches or larger.

Lake Fanny Hooe is located at the northern tip of the Keweenaw Peninsula near the town of Copper Harbor. Fort Wilkins State Park, located on Lake Fanny Hooe, brings many campers and anglers to the lake. The State Park has a barrier-free fishing pier, which is one of the few barrier-free shore fishing accessible fishing spots at Copper Harbor.

A popular splake fishery exists in Copper Harbor, however late or poor winter ice development on the Copper Harbor Bay leaves the local community with Lake Fanny Hooe as the only other fishing opportunity during the winter.

Sport fishing regulations at Lake Fanny Hooe were classified under the Type-B inland trout category, which sets a minimum size of 15 inches for keeping lake trout and 12 inches for keeping splake. With the Type-B sportfishing regulations; lake trout that have been stocked at 10-12 inches must grow for a year within the lake before they reach the 15 inch minimum legal size. Similarly, splake stocked at an 8 inch size take a year within the lake to grow to the 12 inch legal catchable size.

With the seasonal out-migration of fish from this lake, stocked splake and lake trout often do not remain within the lake long enough to grow into these minimum length sizes. The removal of the Type-B inland trout regulations will allow for an instant put-and-take fishery for anglers; therefore anglers will be able to keep the stocked fish during the season in which they are planted and this will increase angling opportunities and use here.



Photo courtesy: Lake Fanny Hooe Resort & Campground, LLC

What's New (continued): Changes in trout regulations:

- Lake-run brook trout, (Houghton/Baraga/Marquette County):

Part of the Michigan DNR Natural Resources Commissions 2012 decision on the 10-fish brook trout possession regulation was for Michigan DNR fisheries division to explore sport fishing regulations that would protect and/or rehabilitate populations of brook trout that migrate from Lake Superior into coastal tributaries (also known as adfluvial or coaster brook trout).

Partner Lake Superior jurisdictions in Minnesota and Ontario have already instituted efforts to protect and enhance stocks of coaster brook trout within the Lake Superior Basin. Protective brook trout regulations there are facilitating the return of larger brook trout and may be helping with population rehabilitation. Brook trout regulations in portions of Lake Superior tributaries in Minnesota (20 inch minimum size limit, 1-fish bag) and Ontario (22 inch minimum size limit, 1 fish bag) are helping to effect a recovery of coaster brook trout populations and have strong public support for their programs.

Consistent regulations among jurisdictions are useful since it is well recognized from brook trout tag and recapture data that brook trout can migrate throughout the Lake Superior basin. For example, in 2014 a coaster brook trout that was tagged in Canada's Nipigon River was caught by a sport fisherman off the river mouth of the Gratiot River of Michigan's Keweenaw Peninsula.

The lower portions of Michigan rivers that connect to Lake Superior in portions of Baraga, Houghton, and Marquette counties offer good habitat for lake-run brook trout. These rivers include the following waters; Pilgrim River, Silver River, Slate River, Ravine River, Big Huron River, Little Huron River, Iron River, Big Garlic River and tribs, and Portage/Torch Lake System (see map on next page). Current distributions of coaster brook trout in Michigan suggest that angling mortality may limit populations. Protective regulations on Great Lakes accessible portions of eight rivers in this area may lead to re-emergence of spawning runs of coaster brook trout.

The proposed change will be for brook trout, splake, and lake trout, whereby for the lower portion of these eight streams the open fishing season will be in effect from the last Saturday in April to September 30, and for the Portage/Torch Lake system (which is connected to Lake Superior) the season will remain year-round; and collectively for all these waters the minimum size limit for brook trout, splake, and lake trout will change to 20 inches with a 1-bag possession limit. This proposed change will allow the brook trout size limit in these streams and possession limit to match the adjacent Lake Superior waters. Enacting this regulation collectively on brook trout, lake trout, and splake will facilitate enforcing this regulation, since distinguishing between these species and the hybrid can be difficult. There will not be any changes to the open fishing season nor the gear for taking brook trout.

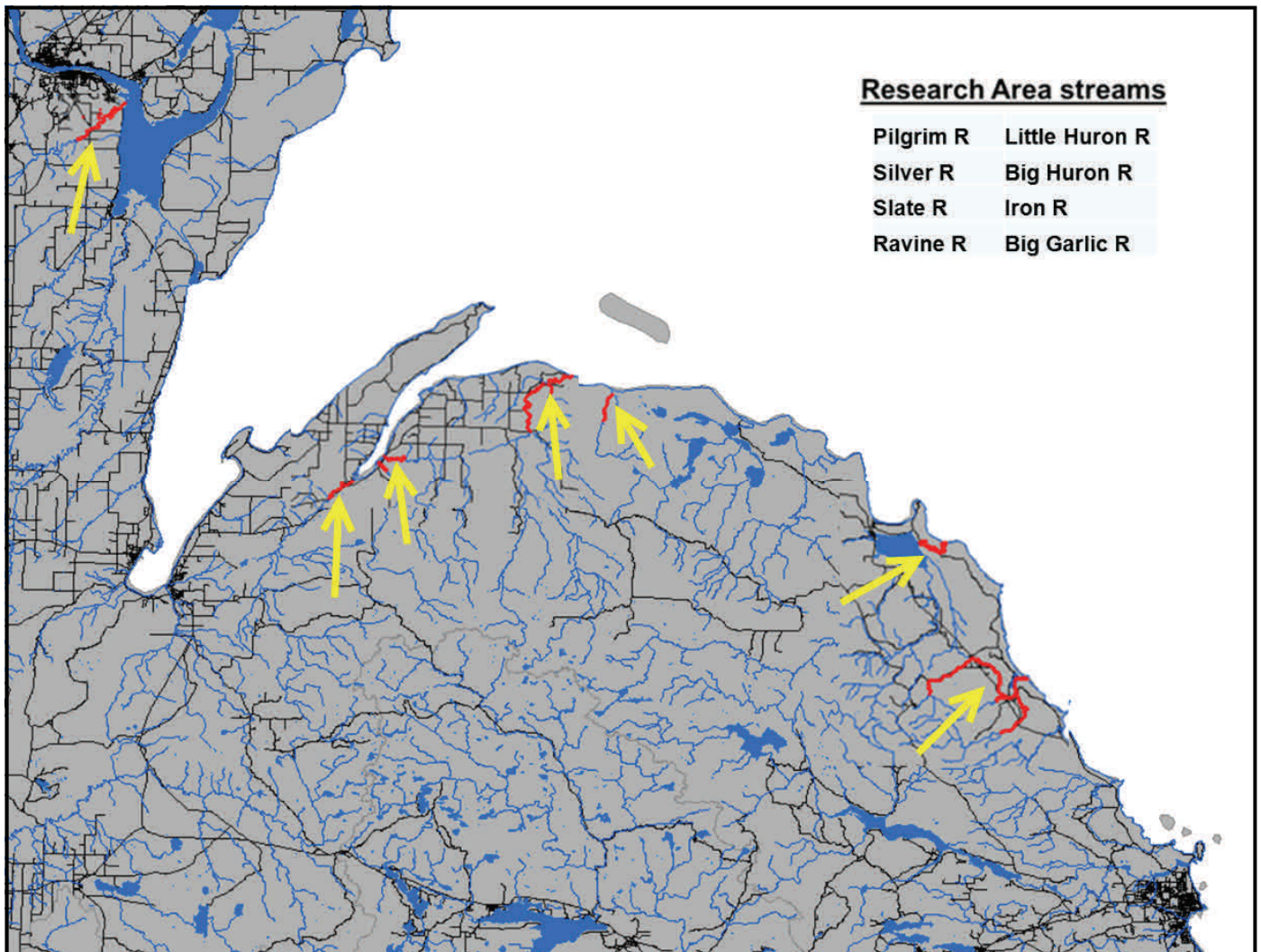
Public meetings were held in the western Upper Peninsula cities of Marquette, Houghton, and Ironwood, to collect citizen opinion about this proposal. Meetings were also held with the Copper County Chapter Trout Unlimited, Marquette Chapter Trout Unlimited (Fred Waara chapter), Ottawa Sportsman's Club, and Michigan DNR Coldwater Steering Committee. This topic was discussed at the Western Upper Peninsula Citizens Advisory Committee (CAC). At each group meeting there was discussion and questions from the public however it was the consensus at each meeting; that this proposal was worth pursuing, the stream reaches affected represented a very small amount of river miles, and that the State of Michigan does have a responsibility work towards rehabilitating coaster brook trout and managing Lake Superior brook trout stocks in a similar manner to other jurisdictions around Lake Superior.

What's New (continued): Changes in trout regulations:

- Lake-run brook trout, (Houghton/Baraga/Marquette County) continued:

The regulations are being evaluated as part of a federally-funded study that is scheduled to run for at least 10 years since it took 10 years for detectable numbers of coasters to show up in surveys in Minnesota tributaries. Experimental reaches and reaches where no regulation change has occurred (controls) will be sampled via electrofishing on a 3-year rotation in fall to assess relative changes over time in brook trout abundance, size, and age structure. An angler diary program is being established to document trends in angler catches of brook trout over the study period. Evaluation of findings will be contained in annual progress reports for the Sport Fish Restoration study, and a final report will be produced at the end of the study.

Map of Adfluvial Brook Trout Research Rivers



What's New (continued): Changes in walleye regulations:• Lac Vieux Desert Lake (Gogebic County):

The 4,300 acre Lac Vieux Desert flowage is located at the southern portion of the Western Upper Peninsula and the impounded reservoir straddles both States of Michigan and Wisconsin. This is a Michigan-Wisconsin Boundary water, which has special boundary-water fishing regulations that differ between each state. For walleyes, the fishing season and minimum size limit is the same (May 15 through March 1, 5 fish of a minimum size of 15 inches), however the daily possession limit is different whereby Michigan-licensed anglers can keep five walleyes while Wisconsin anglers can keep only two walleyes.

The only change to this regulation is to make the daily possession limit for walleye to be the same for both states. To accomplish this, Wisconsin will be increasing their daily limit of walleyes to three and Michigan will be reducing their daily bag limit of walleyes to three. This will remove a long standing confusion amongst anglers as to what their legal daily bag limit for walleyes should be for either side of the lake.

Walleye stocking:

In late spring of 2014, Fisheries Division was able to collect enough fertilized walleye eggs on April 29-30 to supply all of the Upper Peninsula (UP) rearing ponds with fry. With reductions in staff (due to retirements) we consolidated our UP rearing into our larger more productive ponds and we eliminated walleye rearing in the two smaller Amber Ponds located in southern Ontonagon County. Successfully, we met all of our walleye stocking requests for the 2014 year.

DNR Fisheries Division Northern Lake Michigan and Western Lake Superior Management Units			
Walleye Stocking 2014			
County	Water	Fingerlings Stocked	Fry stocked
Baraga	Huron Bay		1,600,000
Delta	Camp Seven Lake	1,500	
Delta	Little Bay de Noc	450,186	
Delta	Round Lake	20,000	
Dickinson	Lake Antoine	37,570	
Dickinson	Carney Lake	4,900	
Gogebic	Duck Lake	7,056	
Houghton	Portage Lake	110,705	
Houghton	Portage Lake		1,100,000
Houghton	Prickett Dam Backwater	10,750	
Iron	Crystal Falls Impoundment	7,700	
Keweenaw	Lac La Belle	27,636	
Keweenaw	Lake Fanny Hooe	2,102	
Mackinac	Brevoort Lake	10,000	
Marquette	Fish Lake	4,700	
Marquette	Hoist Basin	7,816	
Marquette	Mehl Lake	2,400	
Ontonagon	Victoria Reservoir	10,750	
Schoolcraft	Indian Lake	30,000	
TOTAL SPRING FINGERLINGS		745,771	2,700,000

Walleye rearing (continued):

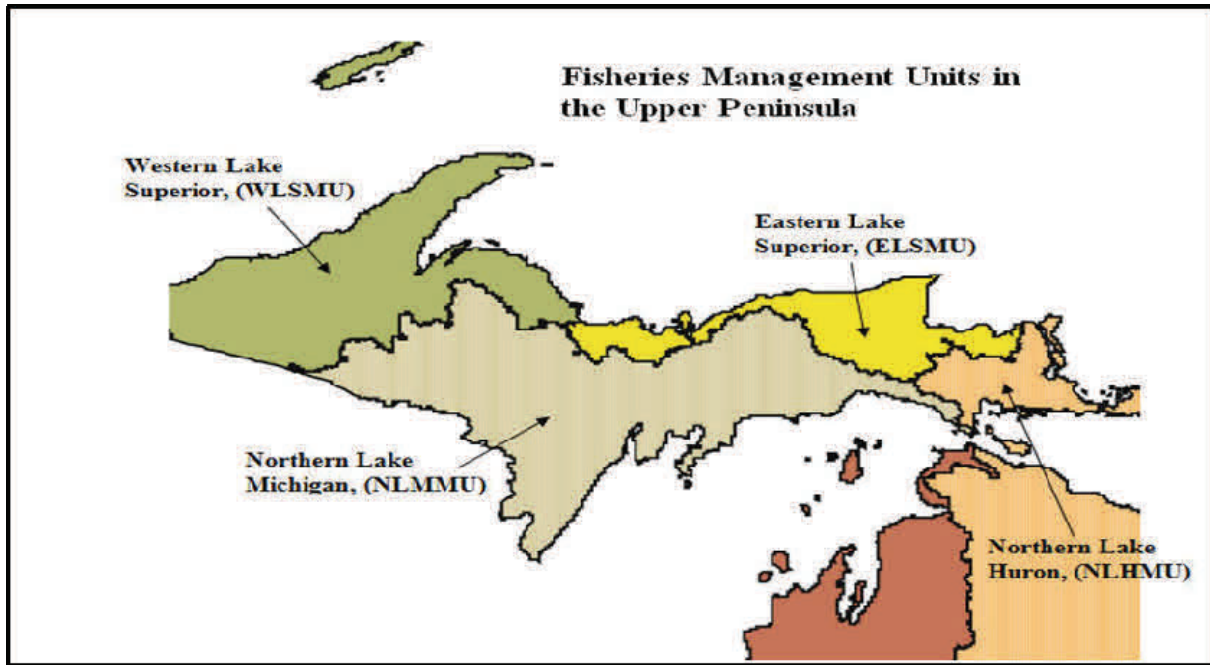
There was citizen concern last year, following the draw-down and refilling of the Prickett Dam (Baraga County) and Victoria Dam (Ontonagon County) that the walleye fisheries in these impoundments were impacted by the dewatering events. We did restock both of these impoundments with walleyes and the corresponding sport fisheries should rebound quickly.

Bluegill rearing:

As an experiment with Amber II pond, we stocked pure-strain bluegills into this pond to see if we could rear bluegills to supply to Family Fishing lakes. We had good luck with this experiment and the Amber II pond produced numerous bluegill fingerlings. We will continue this experiment through the winter of 2015 to determine if we can over-winter the fingerlings and stock them to receiving waters in early summer when survival conditions are optimal. We will evaluate the bluegill rearing potential of the Amber Ponds and will decide whether to use these for panfish rearing or advance fall-fingerling sized walleyes.



Scap-net full of bluegill fingerlings



Fisheries Division Website

There are numerous links on Fisheries Division’s website that will help you with your fishing experience. Many of these links are very handy with smartphone technology.

Fishing - Michigan.gov/fishing



With best wishes for an enjoyable and productive 2015 fishing season

George Madison

Contact Information

George Madison, Fisheries Division
 Baraga Operations Service Center
 427 US-41 North
 Baraga, Michigan 49908
 Phone: (906) 353-6651 ext. 119

West Lake Superior Unit Stocking Summary

Check out where we stock fish: The following is a summary of the fish that were stocked in the West Lake Superior Management Unit waters. You can check out where fish are stocked by visiting the following DNR website: <http://www.michigandnr.com/fishstock/>

Date	waters_name	site_name	county	lot_name	#stocked	size (inches)	stage_of_development
05/07/2014	Alberta Pond	ALBERTA POND	Baraga	brook trout	1,085	8.0	Yearling
05/07/2014	Alberta Pond	ALBERTA POND	Baraga	brook trout	50	20.0	Adult
12/10/2014	Alberta Pond	ALBERTA POND	Baraga	brook trout	227	21.4	Adult
05/14/2014	Roland Lake	ROLAND LAKE	Baraga	brook trout	1,500	8.0	Yearling
05/14/2014	Roland Lake	ROLAND LAKE	Baraga	brook trout	228	20.0	Adult
05/21/2014	East Branch Huron River	E. Br. Huron River	Baraga	rainbow trout (steelhead)	20,000	8.7	Yearling
05/23/2014	Lake Superior - Keweenaw Bay	L'Anse Bay	Baraga	splake	1,911	8.9	Yearling
06/02/2014	Silver River (51-31-18)	Public access site	Baraga	walleye	1,600,000	0.1	Swim-up fry
06/04/2014	Falls River	Golf Course Road	Baraga	brown trout	10,470	7.4	Yearling
06/09/2014	Sturgeon River	Hwy M-38	Baraga	brown trout	2,250	8.1	Yearling
06/09/2014	Sturgeon River	Wilderness Gorge	Baraga	brown trout	5,400	8.1	Yearling
05/06/2014	Beatons Lake	BEATONS LK PAS	Gogebic	rainbow trout (eagle lake)	4,940	7.2	Yearling
05/06/2014	Little Duck (Little Crystal) Lake	LITTLE DUCK LAKE	Gogebic	rainbow trout (eagle lake)	2,185	7.2	Yearling
05/08/2014	Imp Lake	IMP LAKE	Gogebic	splake	3,360	8.0	Yearling
05/08/2014	Little Duck (Little Crystal) Lake	LITTLE DUCK LAKE	Gogebic	splake	1,500	8.0	Yearling
05/15/2014	Cornelia Lake	CORNELIA LAKE	Gogebic	brook trout	1,200	8.2	Yearling
05/15/2014	Black River	BLACK R. Hedberg Rd.	Gogebic	brook trout	510	8.2	Yearling
05/15/2014	Black River	BLACK R. Mosinee Grade	Gogebic	brook trout	510	8.2	Yearling
05/15/2014	Powder Mill Creek	HARDING ROAD	Gogebic	brook trout	500	8.2	Yearling
05/15/2014	Powder Mill Creek	HILL AVENUE	Gogebic	brook trout	500	8.2	Yearling
05/15/2014	Powder Mill Creek	OLD COUNTY ROAD	Gogebic	brook trout	500	8.2	Yearling
05/15/2014	Powder Mill Creek	US-2	Gogebic	brook trout	500	8.2	Yearling
05/19/2014	Black River	BLACK R. Hedberg Rd.	Gogebic	brook trout	1,000	7.9	Yearling
05/19/2014	Lake Superior	BLACK RIVER HARBOR	Gogebic	Chinook salmon	57,710	3.3	Spring fingerling
05/19/2014	Lake Superior	BLACK RIVER HARBOR	Gogebic	brown trout	15,000	7.9	Yearling
05/20/2014	Beatons Lake	BEATONS LAKE	Gogebic	lake trout	107	18.6	Adult
05/25/2014	Black River	Black River net pen	Gogebic	Chinook salmon	14,960	3.2	Spring fingerling
06/26/2014	Duck Lake	DUCK LAKE	Gogebic	walleye	7,056	1.6	Spring fingerling
10/10/2014	Castle Lake	CASTLE LAKE	Gogebic	brook trout	2,800	5.6	Fall fingerling
10/15/2014	Redboat Lake	REDBOAT LAKE	Gogebic	brook trout	2,000	5.6	Fall fingerling

West Lake Superior Unit Stocking Summary

Date	waters_name	site_name	county	lot_name	#stocked	size (inches)	stage_of_development
05/14/2014	Clear Lake	CLEAR LAKE	Houghton	brook trout	2,000	8.0	Yearling
05/20/2014	Lake Roland	ROLAND LAKE	Houghton	lake trout	100	17.3	Adult
05/21/2014	East Branch Ontonagon River	East Branch at Lake 13 Road Bridge	Houghton	rainbow trout (steelhead)	20,000	8.6	Yearling
05/22/2014	East Branch Ontonagon River	East Branch at Lake 13 Road Bridge	Houghton	rainbow trout (steelhead)	20,000	8.5	Yearling
05/29/2014	Portage Lake	PIKE BAY-CHASSELL	Houghton	walleye	1,100,000	0.4	Swim-up fry
06/09/2014	Lake On Three	LAKE ON THREE	Houghton	rainbow trout (eagle lake)	1,260	7.6	Yearling
06/09/2014	Emily Lake	EMILY LAKE	Houghton	rainbow trout (eagle lake)	4,680	7.6	Yearling
06/09/2014	Lake Roland	ROLAND LAKE	Houghton	rainbow trout (eagle lake)	6,030	7.6	Yearling
06/25/2014	Prickett Dam Backwater	PRICKETT DAM BACKWATER	Houghton	walleye	10,750	1.6	Spring fingerling
06/26/2014	Portage Lake	PIKE BAY-CHASSELL	Houghton	walleye	110,705	1.6	Spring fingerling
10/09/2014	Lake Perrault	PERRAULT LAKE	Houghton	brook trout	3,250	5.5	Fall fingerling
10/09/2014	Penegor Lake	PENEGORE LAKE	Houghton	brook trout	440	5.5	Fall fingerling
05/07/2014	Hannah (Webb) Lake	HANNAH (WEBB) LAKE	Iron	rainbow trout (eagle lake)	3,230	7.3	Yearling
10/16/2014	Killdeer Lake	KILLDEER LAKE	Iron	brook trout	800	5.6	Fall fingerling
05/20/2014	Lake Fanny Hooe	FANNY HOOE LAKE	Keweenaw	lake trout	200	18.6	Adult
05/22/2014	Lake Superior	COPPER HARBOR	Keweenaw	splake	23,460	8.9	Yearling
07/01/2014	Lac La Belle	LAC LA BELLE	Keweenaw	walleye	27,636	1.9	Spring fingerling
07/01/2014	Lake Fanny Hooe	FANNY HOOE LAKE	Keweenaw	walleye	2,102	1.9	Spring fingerling
10/09/2014	Lost Lake	LOST LAKE	Keweenaw	brook trout	600	5.5	Fall fingerling
04/28/2014	Carp River	CARP RIVER	Marquette	rainbow trout (steelhead)	14,000	8.2	Yearling
05/12/2014	Dead River	DEAD RIVER (net pen)	Marquette	Chinook salmon	99,960	3.0	Spring fingerling
05/14/2014	Carp River	CARP RIVER	Marquette	Chinook salmon	110,000	3.2	Spring fingerling
05/16/2014	Carp River	Highway M-35	Marquette	brook trout	830	10.6	Yearling
05/16/2014	Carp River	Negaunee, North Road	Marquette	brook trout	830	10.6	Yearling
05/20/2014	Lake Superior	MARQUETTE BAY-SPEARS COAL DOCK	Marquette	splake	25,000	8.7	Yearling
05/28/2014	Lake Angeline	ANGELINE LAKE	Marquette	brook trout	9,469	8.9	Yearling
05/28/2014	Upper Dead River	Below Silver Lake Basin	Marquette	brook trout	610	8.6	Yearling
05/28/2014	Yellow Dog River	Mulligan Truck Trail	Marquette	brook trout	2,500	8.6	Yearling
05/28/2014	Teal Lake	Public Access Site	Marquette	walleye	1,000,000	0.1	Swim-up fry
05/29/2014	Yellow Dog River	County Road 510	Marquette	brown trout	2,000	7.9	Yearling
05/29/2014	Yellow Dog River	Bob Lake crossing	Marquette	brown trout	1,000	7.9	Yearling
05/29/2014	Yellow Dog River	Gate (washout bridge)	Marquette	brown trout	1,000	7.9	Yearling
06/04/2014	Yellow Dog River	County Road 510	Marquette	rainbow trout (eagle lake)	1,932	7.9	Yearling
06/04/2014	Yellow Dog River	Bob Lake crossing	Marquette	rainbow trout (eagle lake)	920	7.9	Yearling
06/04/2014	Yellow Dog River	Gate (washout bridge)	Marquette	rainbow trout (eagle lake)	920	7.9	Yearling
07/10/2014	Sundstrom (Hoist) Lake	SUNDSTROM LAKE (HOIST BASIN)	Marquette	walleye	7,816	1.8	Spring fingerling
10/02/2014	Sundstrom (Hoist) Lake	SUNDSTROM LAKE (HOIST BASIN)	Marquette	lake trout	16,880	3.9	Fall fingerling
10/15/2014	Teal Lake	PAS	Marquette	Great Lake spotted muskie	699	8.9	Fall fingerling
11/06/2014	Partridge Creek	Partridge Creek, N 7th Street	Marquette	brook trout	100	5.4	Fall fingerling
11/06/2014	Partridge Creek	Partridge Creek, N Washington Street	Marquette	brook trout	100	5.4	Fall fingerling
04/02/2014	Mirror Lake	MIRROR LAKE	Ontonagon	splake	3,000	7.5	Yearling
05/05/2014	Firesteel River	FIRESTEEL RIVER	Ontonagon	brown trout	9,000	8.0	Yearling
05/14/2014	Big Iron River	SILVER CITY	Ontonagon	Chinook salmon	85,000	3.2	Spring fingerling
05/24/2014	Ontonagon River	RIVER MOUTH	Ontonagon	Chinook salmon	24,960	3.2	Spring fingerling
05/29/2014	Middle Branch Ontonagon River	MID BR ONTONAGON RIVER	Ontonagon	brook trout	3,732	8.6	Yearling
05/29/2014	Trout Creek Pond	TROUT CREEK POND	Ontonagon	brook trout	250	8.6	Yearling
06/25/2014	Victoria Reservoir	VICTORIA DAM BASIN	Ontonagon	walleye	10,750	1.6	Spring fingerling