

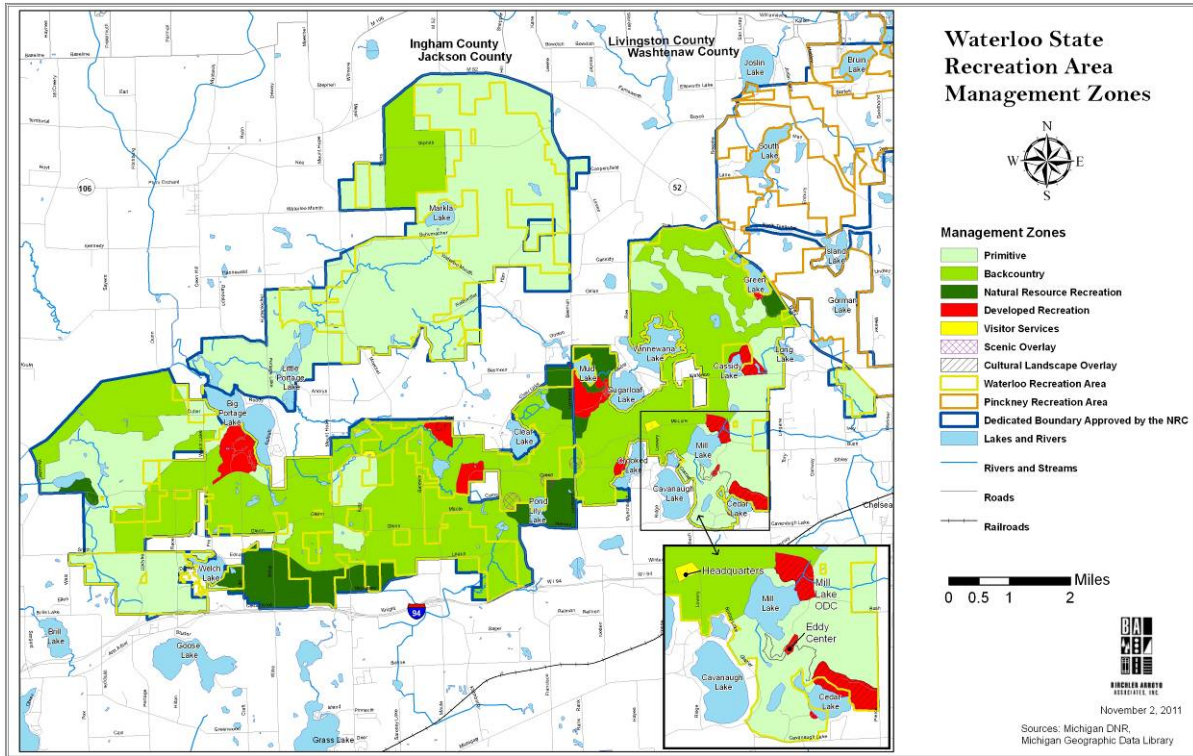
WATERLOO RA PHASE 2 – LONG-RANGE ACTION GOALS PLAN

February 2013

PHASE 2 – LONG-RANGE ACTION GOALS PLAN

Long-range management guidance focused on the specific natural resources, historic-cultural resources, recreation opportunities and the education-interpretation opportunities of...

Waterloo Recreation Area



PLAN APPROVALS



Chief, Parks and Recreation Division

2/20/13
Date



Chief, Operations Section

2-12-13
Date



Chief, Planning Section

2-11-13
Date



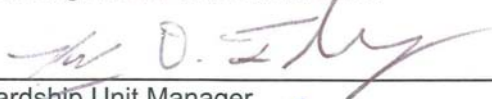
WATERLOO RA PHASE 2 – LONG-RANGE ACTION GOALS PLAN

PLAN APPROVAL RECOMMENDATIONS:



Park Management Plan Administrator

12/14/12
Date



Stewardship Unit Manager

12/14/12
Date



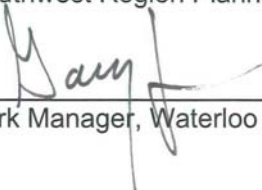
Rose Lake District Supervisor

12-20-12
Date



Southwest Region Planner

12.18.12
Date



Park Manager, Waterloo Recreation Area

12/20/12
Date

FOR INFORMATION:

NRC – MICHIGAN STATE PARKS ADVISORY COMMITTEE:

2/7/12
Date

WATERLOO RA PHASE 2 – LONG-RANGE ACTION GOALS PLAN

INTRODUCTION

A General Management Plan develops as a result of a series of planning steps. Each step builds upon the previous, and action decisions focus on the mission of the Parks & Recreation Division (PRD), and the specific Purpose and Significance of the park. Phase I GMP is the first of four phases of planning. This document, Phase 2 Action Plan, is directed by the Phase 1 plan and identifies goals to be attained over the next ten years.

In this phase, the first action is to re-evaluate the General Management Plan to assure that no conditions have changed that would cause a change in the overall guiding document. Having recently adopted the General Management Plan for this recreation area in 2012, it stands as written.

The second phase of management planning for Waterloo Recreation Area establishes long-range action goals for each of the management zones defined in the “General Management Plan” (GMP). For each management zone in the plan, action goals are recommended that address the following categories:

- Natural Resources
- Historic/Cultural Resources
- Recreation Opportunities
- Education/Interpretation Opportunities
- Management Focus
- Visitor Experience
- Development



BACKGROUND OF WATERLOO RECREATION ARE AND OVERVIEW OF PHASE 1

Waterloo Recreation Area, with 20,125 acres, is located in both Jackson County and Washtenaw County, Michigan. The Department of Natural Resources (DNR) Parks & Recreation Division (PRD) completed the Phase I General Management Plan (GMP) process for Waterloo Recreation Area in 2012. The endeavor represents a new planning philosophy of the PRD. “Management Planning,” a comprehensive, resource-based process is the PRD’s adaptation of National Park Service planning methodology. Through the planning process, the Planning Team (made up of Natural Resources Department staff, government officials, stakeholders and the public), the Core Values for Waterloo Recreation Area were developed. Waterloo Recreation Area was determined to be significant for the following reasons:

1. The recreation area has an extensive, internal trail system with opportunities to provide external connections to the region via the Lakelands Trail State Park.
2. Waterloo Recreation Area features more rare animals and plants species, and more exemplary natural communities, than any other park in State system.

WATERLOO RA PHASE 2 – LONG-RANGE ACTION GOALS PLAN

3. Waterloo Recreation Area is co-managed by the Wildlife and Parks and Recreation Divisions; is the third largest property in the State park system; and is the largest in the Lower Peninsula.
4. The recreation area has a rich cultural history including 4 eligible historic districts.
5. The Eddy Discovery Center, located within the recreation area, offers a nature study area and interpretive activities. There is a large area around Discovery Center where hunting & snowmobiles are not allowed, maintaining quiet in Fall & Winter.
6. A variety of camping opportunities are available at the recreation area, including rustic sites and modern campgrounds.
7. Recreational opportunities include a disc golf course and extensive equestrian trails, as well as opportunities for fishing, boating, hunting, trapping, birding, and cross country skiing.
8. The proximity of the Aggregate Industries operation offers the opportunity to add land to the recreation area as mining reclamation is completed.
9. The size of Waterloo Recreation Area is significant in relation to the regional population center, and is enhanced by its proximity to Pinckney Recreation Area. The recreation areas offer an “up north” feel in southeast lower Michigan due to their combination of land mass and natural features.
10. The recreation area is adjacent to the Phyllis Haehnle Memorial Sanctuary, a popular viewing area of local habitat for sand hill cranes.
11. The recreation area has several important volunteer programs, including the Michigan United Conservation Clubs, which operates the Cedar Lake group camp outdoor center under contract, and two active Friends groups, including the Waterloo Natural History Association and the Waterloo Horsemen’s Association.
12. Due to its opportunities, several organizations use the recreation area and are located nearby, including the Waterloo Hunt Club, the Farm Museum (operated by the Historical Society) and private equestrian campgrounds adjacent to equestrian trails.
13. There is an idle stable facility, which has the potential to provide additional opportunities for horseback riding within the recreation area.
14. In addition to multiple boat launches for motor boats, there are several “quiet” opportunities for boating that feature gravel and hand-carry launches.
15. There are designated Natural Beauty Roads within the Waterloo Recreation Area.

Considering the identity and significance of Waterloo Recreation Area, the Planning Team, with stakeholder and public input, established appropriate Management Zones and the extent of influence on the property. From a palette of nine standard zones, seven were applied to Waterloo Recreation Area. While the full descriptions of these zones are included in the Phase 1 document, a condensed review of the Management Zones follows:

WATERLOO RA PHASE 2 – LONG-RANGE ACTION GOALS PLAN

- ❑ Primitive Zone comprises 9,602 acres, or 47.7%, and will reflect a desired condition that emphasizes the natural resources. The allowance of recreational uses should depend on attaining and maintaining a high quality natural resource condition.
- ❑ Backcountry Zone comprises 8,773 acres, or 43.6%, and emphasizes resource quality over recreation, but allows for modification of landscape to allow for moderate levels of active recreation uses. Most of park's extensive trail system is located in this zone.
- ❑ Natural Resource Recreation Zone comprises 795 acres, or 3.9% and permits active recreation with medium to high density of use conducted in natural areas. There is still an emphasis on resource quality over recreation, but in this zone, higher levels of use are allowed.
- ❑ Developed Recreation Zone comprises 924 acres, or 4.6%, and allows active recreation with high density of use conducted in areas not designated for natural resource significance. In this zone, recreation dominates with natural resource attributes enhanced where possible. The park's modern campgrounds, day-use beaches, boat launch sites, and parking areas are found in this zone.
- ❑ Visitor Services Zone comprises 31 acres, or 0.15%, and encompasses those areas required for program administration and operations. This zone includes the office, contact station, and maintenance facilities that support the business of running a state park. The current headquarters for the park will be in the Visitors Services Zone.
- ❑ Scenic Overlay Zone comprises 78 acres, or 0.39% and recognizes that there are visual aesthetic qualities to be preserved and protected in the park. While there are many such scenic areas, those identified during the planning process, and noted on the management zone plan, are at high points in the central portion of the park.
- ❑ Cultural Landscape Overlay Zone comprises 293.7 acres, or 1.5% and addresses the overall setting in which is found not only historic structures, but also non-structural evidence of the traditions, beliefs, practices, lifeways, arts, crafts and social institutions of any community.

In addition, to the Management Zones, the GMP recommends that other aspects of the Recreation Area be considered:

- ❑ Regional Consideration. The planning for Waterloo Recreation Area was performed in conjunction with the planning for Pinckney Recreation Area. The planning effort, supported by a consensus of the Planning Team, proposes to implement a direct connection between Waterloo and Pinckney Recreation Areas, as well as to other facilities in the region, such as Lakelands Trail State Park and nearby county and metroparks.

WATERLOO RA PHASE 2 – LONG-RANGE ACTION GOALS PLAN

- ❑ Future Purchases. Part of the DNR's mission is to acquire lands with unique natural, cultural and historic resources for the purposes of public recreation and education. The Natural Resources Commission approved a dedicated boundary for Waterloo Recreation Area in 2004. The Planning Team's recommendation for expanding the project boundary is included in this GMP (see Section 2.5). Land within the dedicated boundary would be a priority purchase for the DNR, should the opportunity to purchase and funding become available. Major land purchases within the dedicated boundary would take on the zone designation illustrated in th

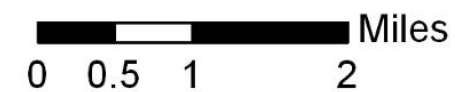


Waterloo State Recreation Area Management Zones



Management Zones

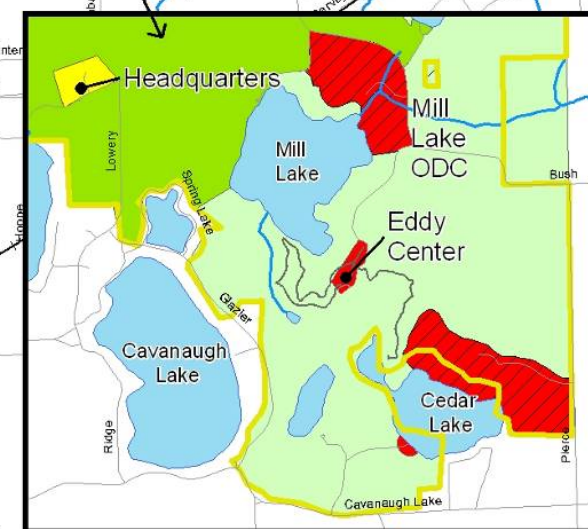
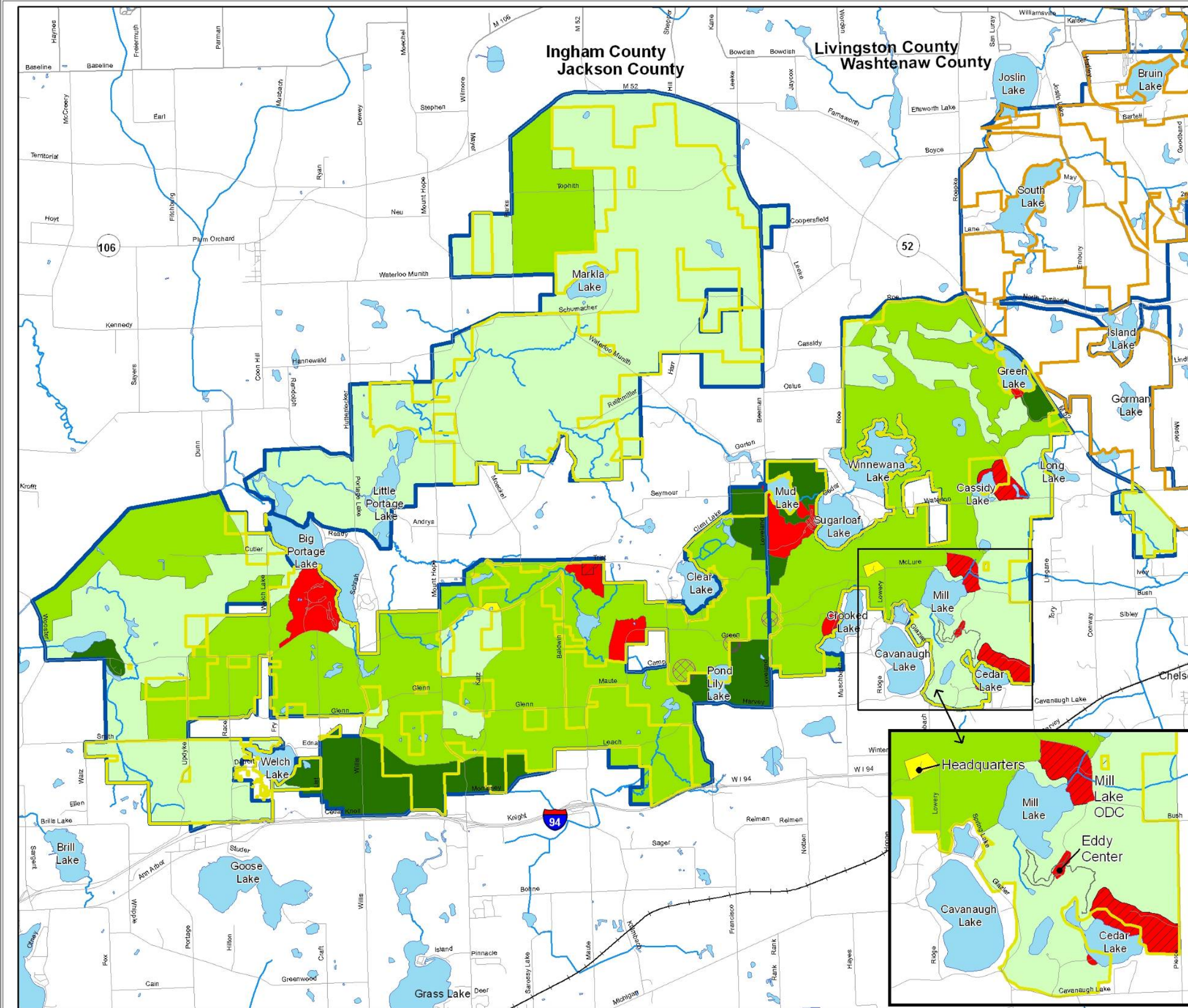
- Primitive
- Backcountry
- Natural Resource Recreation
- Developed Recreation
- Visitor Services
- Scenic Overlay
- Cultural Landscape Overlay
- Waterloo Recreation Area
- Pinckney Recreation Area
- Dedicated Boundary Approved by the NRC
- Lakes and Rivers
- Rivers and Streams
- Roads
- Railroads



BIERCHER ARROYO ASSOCIATES, INC.

November 2, 2011

Sources: Michigan DNR, Michigan Geographic Data Library



(Intentionally Blank)

WATERLOO RA PHASE 2 – LONG-RANGE ACTION GOALS PLAN

These final goals were developed based upon input and discussion from the full Planning Team, Stakeholders, and the public.

WATERLOO RECREATION AREA

1. General Action Goals (Applies to the whole park)

Natural Resources

Action Goal	Target Date	Program Input From	Responsible Program Position	Appropriate Zone(s)
1. Develop an Invasive Species Plan	5 Years	Stewardship	Stewardship Ecologist	All Applicable Zones
2. Develop (Phase 1) Stewardship Plan	5 Years	Stewardship, Huron River Watershed Council, Park Mgr	Stewardship Ecologist	All Applicable Zones
3. Implement (Phase 2) Stewardship Plan for the park	On-going	Stewardship, Volunteers	Stewardship and Volunteer Program Coordinator	All Applicable Zones
4. Implement the specific provisions of the Biodiversity Stewardship Plan (BSP)	On Hold			
5. Update Natural Features Inventory	On-going	MNFI, Stewardship, and Volunteers	MNFI	All Applicable Zones
6. Stewardship will continue to provide input into leased farm areas	On-going	Stewardship, Wildlife, and Park Manager	Stewardship	All Applicable Zones
7. Survey and manage the aquatic system within the recreation area to identify resources and access opportunities	On-going	Fisheries	Fisheries	All Applicable Zones
8. Refine survey of EMR* habitat and follow EMR management guidelines (in All Applicable Zones where CCAA** applies)	1 Year (survey) and On-going (guidelines)	Stewardship, Wildlife, Park Manager	Stewardship, Park Manager	All Applicable Zones With EMR Habitat
9. Preserve the quality of the known exemplary natural communities	On-going	Stewardship, Wildlife, Park Manager	Stewardship, Wildlife	All Applicable Zones

Historic/Cultural Resources

Action Goal	Target Date	Program Input From	Responsible Program Position	Appropriate Zone(s)
1. Develop a cultural resources inventory of the park for interpretation, protection and preservation	Completed But On-going Maintenance	Stewardship, SHPO	Cultural Resource Specialist	All Applicable Zones
2. Develop and conduct monitoring program for archeological resources	On-going	Park Manager and Stewardship	Cultural Resource Specialist and Office of State Archaeologist	All Applicable Zones

*Eastern Massasauga Rattlesnake; **Candidate Conservation Agreement with Assurances

WATERLOO RA PHASE 2 – LONG-RANGE ACTION GOALS PLAN

3. Protect archaeological and cultural resources identified by inventory	On-going	Stewardship, SHPO, and Park Manager	Cultural Resource Specialist and Park Manager	All Applicable Zones
4. Review all proposed earthwork activities for potential impact on historic/cultural resources	On-going	Stewardship	Cultural Resource Specialist and Office of State Archaeologist	All Applicable Zones
Recreation Opportunities				
Action Goal	Target Date	Program Input From	Responsible Program Position	Appropriate Zone(s)
1. Maintain park open to hunting	On-going	PRD and Wildlife Division	Park Manager and Wildlife Biologist	All Applicable Zones Where Hunting Permitted
2. Identify opportunities to improve connectivity within and beyond park boundaries; e.g. opportunities to connect Waterloo RA through Pinckney RA to Lakelands Trail, Hudson Mills Metropark, Park Lyndon	2 Years	Park Manager, Regional Planner, Local Recreation Partners	Regional Planner	All Applicable Zones
3. Consider ecotourism opportunities	On-going	Park Manager, Marketing and Outreach	Park Manager	All Applicable Zones
4. Identify water trail connections	2 Years	Park Manager, Regional Planner, Local Recreation Partners	Regional Planner	All Applicable Zones
5. Coordinate County and Local Recreation Partners interpretation activities into Recreation Area programs	On-going	Park Manager, Marketing and Outreach	Park Manager	All Applicable Zones
6. Develop ADA hunting opportunities	5 Years	Wildlife, Park Manager, Regional Planner	Wildlife	All Applicable Zones
7. Identify opportunities for additional hiking trail loops and dispersed rustic camping	2 Years	Park Manager, Regional Planner	Park Manager	All Applicable Zones
8. Partner with neighboring communities to: (1) actively promote appropriate trail connections through and abutting the Recreation Area and (2) jointly develop trail routes that support the goals of the local partners, Pinckney and Waterloo Recreation Areas, and the PRD.	On-going	Park Manager, Local Recreation Partners, Regional Planner, Marketing and Outreach	Park Manager, Local Recreational Partners	All Applicable Zones

WATERLOO RA PHASE 2 – LONG-RANGE ACTION GOALS PLAN

9. Determine feasibility and identify potential route(s) for a mountain bike connection between and through both Recreation Areas that would: (1) respect the trail integrity and visitor experience for hikers on established Waterloo-Pinckney Trail, and (2) afford physical connections to partner communities' trail systems.	Up to 2 Years for Planning	Park Manager, Local Recreation Partners, Regional Planner, MMBA	MMBA, Park Manager, Regional Planner	All Applicable Zones
10. Evaluate opportunities for family-oriented loop trails near developed units.	5 Years	Park Manager, Local Recreation Partners, Regional Planner	Park Manager, Regional Planner	All Applicable Zones
11. Coordinate with user groups, neighboring communities and other local and state agencies to determine feasibility of a connection from Waterloo to Lakelands Trail SP.	3 Years	Park Manager, Local Recreation Partners, Regional Planner, User Groups, Local/State Agencies	Park Manager, Regional Planner	All Applicable Zones

Education Opportunities

Action Goal	Target Date	Program Input From	Responsible Program Position	Appropriate Zone(s)
1. Develop specific interpretation and education opportunities	On-going	Marketing and Outreach	Marketing and Outreach	All Applicable Zones

Management Focus

Action Goal	Target Date	Program Input From	Responsible Program Position	Appropriate Zone(s)
1. Land acquisition within dedicated boundary	On-going	Park Manager, Lands Manager, Stewardship	Lands Manager	All Applicable Zones
2. Prepare an Emergency Plan	Completed With Annual Update	Park Manager	Park Manager	All Applicable Zones
3. Complete "sign-off" of the Wildfire Plan	2 Years	Stewardship	Park Manager	All Applicable Zones
4. Explore and develop revenue generating opportunities that are sustainable	On-going	Park Manager, Marketing and Outreach	Park Manager	All Applicable Zones
5. Dedicate staffing and budget resources to address goals (including partnerships and volunteers as appropriate)	On-going	Park Manager, District Supervisor	Park Manager, District Supervisor	All Applicable Zones
6. Promote volunteer partnerships to meet resource goals	On-going	Stewardship, Park Manager	Park Manager	All Applicable Zones

WATERLOO RA PHASE 2 – LONG-RANGE ACTION GOALS PLAN

7. Develop a marketing plan for this park based on natural and historic resources found within the park, as well as its relationship to Pinckney RA	5 Years	Marketing and Outreach	Park Manager, Program Assistant	All Applicable Zones
8. Utilize variety of old and new media, including audio and visual technologies, podcasts, and the like for interpretation	On-going	Park Manager, Marketing and Outreach	Park Manager, Marketing and Outreach	All Applicable zones
9. Negotiate a site-specific co-management agreement with Wildlife Division	2 Years	PRD, Wildlife	PRD Resource Manager, Wildlife Policy Guru	All Applicable Zones
10. Develop lease for Waterloo Hunt Club that preserves their historical trail use, possibly by a Backcountry Corridor designation	1 Year	Park Manager, Stewardship	Park Manager	All Applicable Zones
11. Develop plan for improving all types of navigation aids to major units, including on freeways, county road, internal roads/trails, GPS sources, park maps, and the like.	On-going	Park Manager, Marketing and Outreach	Park Manager, Marketing and Outreach	All Applicable zones
Development				
Action Goal	Target Date	Program Input From	Responsible Program Position	Appropriate Zone(s)
1. Develop assessment of satellite parking areas to analyze need, location, and/or potential elimination	2 Years	Park Manager and Regional Planner, Wildlife, Review of Chuck Nelson's Study	Park Manager	All Applicable Zones

WATERLOO RA PHASE 2 – LONG-RANGE ACTION GOALS PLAN

2. Primitive Zone			
Natural Resources in Primitive Zone			
Action Goal	Target Date	Program Input From	Responsible Program Position
1. Preserve/protect the native vegetation communities and habitat for species of special concern	On-going	Stewardship, Wildlife	Stewardship
Historic/Cultural Resources in Primitive Zone			
Action Goal	Target Date	Program Input From	Responsible Program Position
1. See General Action Goals			
Recreation Opportunities in Primitive Zone			
Action Goal	Target Date	Program Input From	Responsible Program Position
1. Maintain and enhance low-impact opportunities for hunting/fishing/gathering/trapping, bird watching, and trail use	On-going	Park Manager	Park Manager
Education Opportunities in Primitive Zone			
Action Goal	Target Date	Program Input From	Responsible Program Position
1. Develop interpretive messages for access points to the zone	5 Years	Stewardship, Marketing and Outreach, Park Manager	Park Manager and Marketing and Outreach
2. Coordinate interpretation activities with Recreation Partners	5 Years	Stewardship, Marketing and Outreach, Park Manager	Stewardship and Park Manager
Management Focus in Primitive Zone			
Action Goal	Target Date	Program Input From	Responsible Program Position
1. Address user conflicts	On-going	Park Manager, District Supervisor	Park Manager
Development in Primitive Zone			
Action Goal	Target Date	Program Input From	Responsible Program Position
1. Develop interpretive messages at access points to the zone	5 Years	Stewardship, Marketing and Outreach, Park Manager	Park Manager and Marketing and Outreach
2. Use parking assessment to improve parking/access to the zone	7 Years	Park Manager, Wildlife	Park Manager

WATERLOO RA PHASE 2 – LONG-RANGE ACTION GOALS PLAN

3. Backcountry Zone			
Natural Resources in Backcountry Zone			
Action Goal	Target Date	Program Input From	Responsible Program Position
1. See General Action Goals			
Historic/Cultural Resources in Backcountry Zone			
Action Goal	Target Date	Program Input From	Responsible Program Position
1. See General Action Goals			
Recreation Opportunities in Backcountry Zone			
Action Goal	Target Date	Program Input From	Responsible Program Position
1. Identify expansion of rustic camping accommodations	1 Year	Park Manager, Stewardship, Regional Planner	Park Manager
2. Maintain and enhance opportunities for birding hunting/fishing/gathering/trapping	On-going	Stewardship, Wildlife	Stewardship
3. Investigate feasibility and impacts of trail expansion proposals for equestrian and/or mountain bike use	On-going	Park Manager, Regional Planner, Stewardship, Recreation Partners	Regional Planner
4. Identify route and determine feasibility for a potential equestrian (EQ) trail loop east of the current EQ campground that would respect the trail integrity and visitor experience for hikers on the established Pinckney-Waterloo Trail	3 Years	Park Manager, Regional Planner, Stewardship, Recreation Partners	Park Manager
Education Opportunities in Backcountry Zone			
Action Goal	Target Date	Program Input From	Responsible Program Position
1. Develop/install kiosks and displays appropriate to the zone	5 Years	Park Manager, Marketing and Outreach	Park Manager
Management Focus in Backcountry Zone			
Action Goal	Target Date	Program Input From	Responsible Program Position
1. Address user conflicts	On-going	Park Manager	Park Manager
2. Identify and promote the Education/Interpretation opportunities in the zone	On-Going	Park Interpreter, Marketing and Outreach, Park Manager	Park Manager and Park Interpreter
3. Promote volunteer partnerships to meet resource goals	On-going	Park Manager, Park Interpreter, Stewardship -Southeast Michigan Volunteer Coordinator	Park Manager, Stewardship
Development in Backcountry Zone			
Action Goal	Target Date	Program Input From	Responsible Program Position
1. Upgrade and/or re-route trails to accommodate use compatible with natural character of zone	On-going	Park Manager, Rec. Partners, Stewardship, Regional Planner	Park Manager, Regional Planner

WATERLOO RA PHASE 2 – LONG-RANGE ACTION GOALS PLAN

2. Improve ADA accessibility compatible with the natural character of the zone	On-going	Regional Planner, Wildlife, Park Manager, Stewardship	Park Manager, Regional Planner
3. Restore and/or re-route unsustainable segments of trails	5 Years	Park Manager Stewardship, Users Regional Planner	Park Manager
4. Use parking assessment to improve parking/access to the zone	7 Years	Park Manager, Wildlife	Park Manager

4. Natural Resource Recreation Zone			
Natural Resources in Natural Resource Recreation Zone			
Action Goal	Target Date	Program Input From	Responsible Program Position
1. Annual review of Aggregate Industries implementation of the reclamation plan	Annual (length of lease)	Stewardship, Park Manager, Lands Manager	Park Manager and Lands Manager
Historic/Cultural Resources in Natural Resource Recreation Zone			
Action Goal	Target Date	Program Input From	Responsible Program Position
1. See General Action Goals			
Recreation Opportunities in Natural Resource Recreation Zone			
Action Goal	Target Date	Program Input From	Responsible Program Position
1. Investigate feasibility and impacts of trail expansion proposals	On-going	Park Manager, Regional Planner, Recreation Partners	Regional Planner
2. Maintain and enhance opportunities for hunting/fishing/gathering/trapping, bird watching, trail use and camping	On-going	Stewardship, Wildlife	Stewardship
3. Identify expansion of rustic camping accommodations	1 Year	Park Manager, Stewardship, Regional Planner	Park Manager
Education Opportunities in Natural Resource Recreation Zone			
Action Goal	Target Date	Program Input From	Responsible Program Position
1. See General Action Goals			
Management Focus in Natural Resource Recreation Zone			
Action Goal	Target Date	Program Input From	Responsible Program Position
1. Preserve and protect the cultural resources	On-going	Park Manager and Stewardship	Park Manager
2. Address user conflicts	On-going	Park Manager	Park Manager
Development in Natural Resource Recreation Zone			
Action Goal	Target Date	Program Input From	Responsible Program Position
1. Restore and/or re-route unsustainable segments of trails	5 Years	Park Manager, Regional Planner, Stewardship	Park Manager

WATERLOO RA PHASE 2 – LONG-RANGE ACTION GOALS PLAN

5. Developed Recreation Zone			
Natural Resources in Developed Recreation Zone			
Action Goal	Target Date	Program Input From	Responsible Program Position
1. See General Action Goals			
Historic/Cultural Resources in Developed Recreation Zone			
Action Goal	Target Date	Program Input From	Responsible Program Position
1. See General Action Goals			
Recreation Opportunities in Developed Recreation Zone			
Action Goal	Target Date	Program Input From	Responsible Program Position
1. Prepare an assessment of alternatives, including Camp Waterloo, for relocating the equestrian camp and evaluate potential amenities that could be offered.	2 Years	Park Manager, Stewardship	Park Manager, Stewardship
Education Opportunities in Developed Recreation Zone			
Action Goal	Target Date	Program Input From	Responsible Program Position
1. See General Action Goals			
Management Focus in Developed Recreation Zone			
Action Goal	Target Date	Program Input From	Responsible Program Position
1. Utilize Boat Access Sites (BAS) study to make improvements as needed	On-going	Park Manager, Regional Planner	Park Manager
2. Assessment of alternatives for relocation of equestrian camp (including Camp Waterloo)	2 Years	Park Manager, Lands Manager	Park Manager, Lands Manager
Development in Developed Recreation Zone			
Action Goal	Target Date	Program Input From	Responsible Program Position
1. Restore Mill Lake cabins to serve as rustic cabins	5 Years	Park Manager	Park Manager
2. Expansion of over-night accommodations at Portage Lake, Sugar Loaf Lake, and Green Lake campgrounds	5 Years	Park Manager	Park Manager
3. Analyze potential for lease agreement of The Stable to provide public riding opportunities	1 Year	Park Manager	Park Manager
4. Evaluate and assess transitioning Green Lake Campground to an overnight lodging area with a combination of cabins/yrurts and rustic campsites.	2 Years	Park Manager	Park Manager

WATERLOO RA PHASE 2 – LONG-RANGE ACTION GOALS PLAN

6. Visitor Service Zone			
Natural Resources in Visitor Service Zone			
Action Goal	Target Date	Program Input From	Responsible Program Position
1. Implement a plan for invasive species removal	1 Year	Stewardship, Park Manager	Stewardship
Historic/Cultural Resources in Visitor Service Zone			
Action Goal	Target Date	Program Input From	Responsible Program Position
1. Evaluate fisheries research building for historical or cultural significance	7 Years	Park Manager, Fisheries, Stewardship	Park Manager, Fisheries
Recreation Opportunities in Visitor Service Zone			
Action Goal	Target Date	Program Input From	Responsible Program Position
1. Complete the Stewardship Demonstration Prairie	3 Years	Wildlife, Stewardship, Park Manager	Wildlife, Stewardship, Park Manager
Education Opportunities in Visitor Service Zone			
Action Goal	Target Date	Program Input From	Responsible Program Position
1. See General Action Goals			
Management Focus in Visitor Service Zone			
Action Goal	Target Date	Program Input From	Responsible Program Position
1. Development of a management plan for interpretation and programming	3 Years	Stewardship, Park Manager	Stewardship
Development in Visitor Service Zone			
Action Goal	Target Date	Program Input From	Responsible Program Position
1. Evaluate relocation of headquarters to improve customer service	2 Years	Park Manager	Park Manager

WATERLOO RA PHASE 2 – LONG-RANGE ACTION GOALS PLAN

7. Scenic Overlay Zone			
Natural Resources in Scenic Overlay Zone			
Action Goal	Target Date	Program Input From	Responsible Program Position
1. Follow underlying zone recommendations and/or general recommendations			
Historic/Cultural Resources in Scenic Overlay Zone			
Action Goal	Target Date	Program Input From	Responsible Program Position
1. Follow underlying zone recommendations and/or general recommendations			
Recreation Opportunities in Scenic Overlay Zone			
Action Goal	Target Date	Program Input From	Responsible Program Position
1. Follow underlying zone recommendations and/or general recommendations			
Education Opportunities in Scenic Overlay Zone			
Action Goal	Target Date	Program Input From	Responsible Program Position
1. Follow underlying zone recommendations and/or general recommendations			
Management Focus in Scenic Overlay Zone			
Action Goal	Target Date	Program Input From	Responsible Program Position
1. Follow underlying zone recommendations and/or general recommendations			
2. Provide vegetative management to maintain or enhance the viewscales	Ongoing	Park Manager, Wildlife	Park Manager
Development in Scenic Overlay Zone			
Action Goal	Target Date	Program Input From	Responsible Program Position
1. Follow underlying zone recommendations and/or general recommendations			
2. Provide pull-off location for scenic views of Aggregate Industries property and other opportunities	4 Years	Park Manager, Lands Manager	Park Manager

8. Cultural Landscape Zone			
Action Goal	Target Date	Program Input From	Responsible Program Position
1. Follow underlying zone recommendations and/or general recommendations			

Appendix A –Summary of Public Input

Public Participation

The Department of Natural Resources Parks & Recreation Division (DNR-PRD) emphasizes that comments on the general management plans are accepted at any time during the process. Two structured approaches to gathering public input are included in the general management plan process. The participation initiatives are summarized below, and the results are presented in this Appendix.

❑ July 16-17, 2012 Stakeholder Workshop

The purpose of the workshop was to obtain comments on the draft Phase II Long-Range Action Goals Plan for Waterloo Recreation Area. With assistance from the Planning Team, approximately 50 people and/or organizations were identified as stakeholders. Invitations to the Stakeholder Workshop were sent by email and via post. Approximately 25 people attended the workshop.

Stakeholders were invited to comment at the meeting. Stakeholders could also use sticky dots to elect the activities that they would like to see the DNR prioritize.

❑ October 2, 2012 Public Input Open House

A public input open house was held to allow the public the opportunity to express their comments about the park. The above noted people were again contacted regarding the public input workshops by mail and email. A notice was published in the local paper. Flyers were posted in the Eddy Center. Stakeholders and others were encouraged to share this information with interested members of the general public. Approximately 100 people attended.

There were two opportunities to provide comments:

- 1) Comment at one of the workshops
- 2) Apply sticky dots to activities/goals that the DNR should prioritize

Meeting Summary
DEPARTMENT OF NATURAL RESOURCES
Phase 2 Stakeholder Input Open House
Pinckney & Waterloo State Recreation Areas
July 16 & 17, 2012 from 6 – 8 p.m.
Eddy Discovery Center

1. Introductions at 6:00 pm

2. Brief Presentation of Management Planning Process and Status (15 minutes)

- a. Review Phase 1 Management Zone Maps
- b. Action Goal Development – Draft 10-year strategies to address Management Zone Map
- c. Pinckney Planning Team Draft Action Goals organized by:
 - General Action Goals
 - Primitive Zone
 - Backcountry Zone
 - Natural Resource Recreation Zone
 - Developed Recreation Zone
 - Visitor Service Zone
- d. Review of Waterloo Planning Team Draft Action Goals
 - General Action Goals
 - Primitive Zone
 - Backcountry Zone
 - Natural Resource Recreation Zone
 - Developed Recreation Zone
 - Visitor Service Zone
 - Scenic Overlay Zone
 - Cultural Landscape Overlay Zone
- e. Priority Exercise explained
- f. Action Goals input sheets described
- g. Questions and Answers

3. Open House (1 hour 45 minutes)

- a. You are invited to visit each of the stations and talk to Planning Team members
- b. Color dots are available for you to identify your priority actions (please limit yourself to 10 dots per Recreation Area)
- c. Action Goal input sheets are available for you to contribute additional suggested actions goals

4. Adjournment at 8:00 p.m.

Action Goal	Target Date	Responses
Natural Resources		
1. Develop an Invasive Species Plan	5 Years	8
2. Develop (Phase 1) Stewardship Plan	5 Years	1
3. Implement (Phase 2) Stewardship Plan for the park	On-going	0
4. Implement the specific provisions of the Biodiversity Stewardship Plan (BSP)	On Hold	1
5. Update Natural Features Inventory	On-going	1
6. Stewardship will continue to provide input into leased farm areas	On-going	1
7. Survey and manage the aquatic system within the recreation area to identify resources and assess opportunities.	On-going	0
8. Refine survey of EMR habitat and follow EMR management guidelines (in All Applicable Zones where CCAA applies)	1 Year (survey) & On-going (guidelines)	0
9. Preserve the quality of the known exemplary natural communities	On-going	2
Historic / Cultural Resources		
1. Develop a cultural resources inventory of the park for interpretation, protection and preservation	Completed But On-Going Maintenance	0
2. Develop and conduct monitoring program for archeological resources	On-going	0
3. Protect archaeological/cultural resources identified by inventory	On-going	2
4. Review all proposed earthwork activities for potential impact on historic/cultural resources	On-going	1
Recreation Opportunities		
1. Maintain park open to hunting.	On-going	10
2. Identify opportunities to improve connectivity within and beyond park boundaries; e.g. opportunities to connect Waterloo RA through Pinckney RA to Lakelands Trail, Hudson Mills Metropark, Park Lyndon	2 Years	3
3. Consider ecotourism opportunities	On-going	0
4. Identify water trail connections	2 Years	2
5. Coordinate County and Local Recreation Partners interpretation activities into Recreation Area programs.	On-going	0
6. Develop ADA hunting opportunities	5 Years	0
Education Opportunities		
1. Develop specific interpretation and education opportunities	On-going	8
Management Focus		
1. Land acquisition within dedicated boundary	On-going	8
2. Modify NRC boundary per the Phase 1 plan recommendation	2 Years	0
3. Prepare an Emergency Plan	Completed with Annual Update	0
4. Complete "sign-off" of the Wildfire Plan	2 Years	0
5. Explore and develop revenue generating opportunities that are sustainable.	On-going	1
6. Dedicate staffing and budget resources to address goals (including partnerships and volunteers as appropriate)	On-going	2
7. Promote volunteer partnerships to meet resource goals	On-going	1
8. Develop a marketing plan for this park based on natural and historic resources found within the park, as well as its relationship to Pinckney RA	5 Years	0
9. Utilize variety of old and new media, including audio and visual technologies, podcasts, and the like for interpretation.	On-going	0
10. Negotiate a site-specific co-management agreement with Wildlife Division	2 Years	0
11. Develop lease area for Fox Hunt Club	1 Year	6
Development		
1. Develop assessment of satellite parking areas to analyze need, location and/or potential elimination	2 Years	1

Primitive Zone		
Action Goal	Target Date	Responses
Natural Resources in Primitive Zone		
1. Preserve/protect the native vegetation communities and habitat for species of special concern	On-going	3
Historic/Cultural Resources in Primitive Zone		
1.		
Recreation Opportunities in Primitive Zone		
1. Maintain and enhance low-impact opportunities for hunting/fishing/gathering/trapping, bird watching, and trail use	On-going	4
Education Opportunities in Primitive Zone		
1. Develop interpretive messages for access points to the zone	5 Years	0
2. Coordinate interpretation activities with Recreation Partners	5 Years	0
Management Focus in Primitive Zone		
1. Address user conflicts	On-going	1
Develop in Primitive Zone		
1. Develop interpretive messages at access points to the zone	5 Years	0
2. Use parking assessment to improve parking/access to the zone	7 Years	0

Backcountry Zone		
Action Goal	Target Date	Responses
Natural Resources in Backcountry Zone		
1.		
Historic/Cultural Resources in Backcountry Zone		
1.		
Recreation Opportunities in Backcountry Zone		
1. Identify expansion of rustic camping accommodations	1 Year	5
2. Maintain and enhance opportunities for birding hunting/fishing/gathering/trapping	On-going	6
3. Investigate feasibility and impacts of trail expansion proposals for equestrian and/or mountain bike use	On-going	11
Education Opportunities in Backcountry Zone		
1. Develop/install kiosks and displays appropriate to the zone	5 Years	1
Management Focus in Background Zone		
1. Address user conflicts	On-going	3
2. Identify and promote the Education/Interpretation opportunities in the zone	On-going	0
3. Promote volunteer partnerships to meet resource goals.	On-going	4
Development in Backcountry Zone		
1. Upgrade and/or re-route trails to accommodate use compatible with natural character of zone	On-going	6
2. Improve ADA accessibility compatible with the natural character of the zone	On-going	0
3. Restore and/or re-route unsustainable segments of trails	5 Years	5
4. Use parking assessment to improve parking/access to the zone	7 Years	0

Natural Resource Recreation Zone		
Action Goal	Target Date	Responses
Natural Resources in Natural Resource Recreation Zone		
1. Annual review of Aggregate Industries implementation of the reclamation plan	Annual (length of lease)	3
Historic/Cultural Resources in Natural Resource Recreation Zone		
1.		
Recreation Opportunities in Natural Resource Recreation Zone		
1. Investigate feasibility and impacts of trail expansion proposals	On-going	7
2. Maintain and enhance opportunities for hunting/fishing/gathering/trapping, bird watching, trail use and camping	On-going	7
3. Identify expansion of rustic camping accommodations	On-going	3
Education Opportunities in Natural Resource Recreation Zone		
1.		
Management Focus in Natural Resource Recreation Zone		
1. Preserve and protect the cultural resources	On-going	0
2. Address user conflicts	On-going	1
Development in Natural Resource Recreation Zone		
2. Restore and/or re-route unsustainable segments of trails	5 Years	5
2. Establish physical connection between Waterloo RA and Pinckney RA through Backcountry Zone	5 Years	8

Developed Recreation Zone		
Action Goal	Target Date	Responses
Natural Resources in Developed Recreation Zone		
1.		
Historic/Cultural Resources in Developed Recreation Zone		
1.		
Recreation Opportunities in Developed Recreation Zone		
1. Potential relocation of equestrian camp	8 Years	6
Education Opportunities in Developed Recreation Zone		
1. Utilize Boat Access Sites (BAS) study to make improvements as needed	On-going	0
3. Assessment of alternatives for relocation of equestrian camp (include Camp Waterloo)	2 Years	7
Development in Developed Recreation Zone		
1. Restore Mill Lake cabins to serve as rustic cabins	5 Years	5
2. Expansion of over-night accommodations at Portage Lake, Sugar Loaf Lake and Green Lake Campgrounds.	5 Years	1
3. Analyze potential for lease agreement of The Stable to provide public riding opportunities	1 Year	0

Visitor Services Zone		
Action Goal	Target Date	Responses
Natural Resources in Visitor Services Zone		
1. Implement a plan for invasive species removal	1 Year	1
Historic/Cultural Resources in Visitor Services Zone		
1. Evaluate fisheries research building for historical or cultural significance	7 Years	0
Recreation Opportunities in Visitor Services Zone		
1. Complete the Stewardship Demonstration Prairie	3 Years	0
Education Opportunities in Visitor Services Zone		
1.		0
Management Focus in Visitor Services Zone		
1. Development of a management plan for interpretation and programming	3 Years	0
Develop in Visitor Services Zone		
1. Evaluate relocation of headquarters to improve customer service	2 Years	0

Scenic Overlay Zone		
Action Goal	Target Date	Responses
Natural Resources in Scenic Overlay Zone		
1. Follow underlying zone recommendations and/or general recommendations		
Historic/Cultural Resources in Scenic Overlay Zone		
1. Follow underlying zone recommendations and/or general recommendations		
Recreation Opportunities in Scenic Overlay Zone		
1. Follow underlying zone recommendations and/or general recommendations		
Education Opportunities in Scenic Overlay Zone		
1. Follow underlying zone recommendations and/or general recommendations		
Management Focus in Scenic Overlay Zone		
1. Follow underlying zone recommendations and/or general recommendations		
2. Vegetative management to maintain or enhance the viewsapes	On-going	
Develop in Scenic Overlay Zone		
1. Follow underlying zone recommendations and/or general recommendations		
2. Provide pull-off location for scenic views of Aggregate Industries property and other opportunities.	4 Years	

Cultural Landscape Overlay Zone		
Action Goal	Target Date	Responses
Natural Resources in Scenic Overlay Zone		
1. Follow underlying zone recommendations and/or general recommendations		
Historic/Cultural Resources in Scenic Overlay Zone		
1. Follow underlying zone recommendations and/or general recommendations		
Recreation Opportunities in Scenic Overlay Zone		
1. Follow underlying zone recommendations and/or general recommendations		
Education Opportunities in Scenic Overlay Zone		
1. Follow underlying zone recommendations and/or general recommendations		
Management Focus in Scenic Overlay Zone		
1. Follow underlying zone recommendations and/or general recommendations		
Develop in Scenic Overlay Zone		
1. Follow underlying zone recommendations and/or general recommendations		

**PINCKNEY & WATERLOO RECREATION AREAS
10-YEAR ACTION GOALS**

ADDITIONAL ACTION GOALS TO CONSIDER:

ACTION GOAL	RECREATION AREA
Selective Clear cutting	Waterloo
More active clear cutting	Pinckney
Invasive issue: phragmites moving in quick. Will ruin many wetlands	Pinckney & Waterloo
Hike-in only campsites in Waterloo, like Blind Lake in Pinckney	Waterloo
X-C ski centers with a snow making machine for a small slope, like at HCMA	Waterloo
Expand Waterloo Horseman's campground to include water/electric sites	Waterloo
Possibility of a shower house @ horse camp	Waterloo
Expand horse use trails east of camp	Waterloo
Develop more watering holes for horses	Waterloo
Possible pavilion @ horse camp	Waterloo
Would like to have electricity at horse camp but would not be in favor of any changes that would jeopardize "year round" use of this camp	Waterloo
Would like to have access to running water at equestrian camp but not if it would jeopardize year round access. Wonder if running water could be turned off for winter (freezing conditions) but yet leave camp open	Waterloo
Develop day use parking areas other than at the main equestrian camp. Have outhouses at these areas.	Waterloo

Additional Comments:

- Probably 30 years ago we got our first kill permits for deer on our farm from Jeff Green and a discussion we had that day started by interest in getting agricultural crops into the interior of Pinckney and Waterloo Rec Areas. We had huge numbers of deer on our farm and hunters told me there were few on the state land. I said the DNR need crops on their land to pull and hold the deer into the interior of the rec area and Jeff thought hunter pressure was the reason for the difference.

When we first planted corn across from the Boy Scout camp, there was very little damage for the 25% we left standing all winter. In a few years of cropping however, feeding on the 25% became severe, you could see more deer, the hunting stands appeared everywhere around the fields. There are only a few fields still open and cropping has kept them that way. Only like 1% of the total area is farmed, so to lose any fields would shorten the already short winter food supply....and be forever as the brush took over as it has everywhere else. I continue to believe that a crop food source is the limiting factor on deer populations in the Rec Area.

To maintain even what you have will be a challenge. The soils are not the best and need erosion control with conservation tillage. Long term sustainability also needs careful attention to fertility and lime and eventually perimeter tree cutting or the fields will just close in. Competitive bids are the best but need to include consideration of lime and tree cutting. Thank you for hearing my thoughts.

Lesser Farms – Dale Lesser

I will be unable to attend Monday's or Tuesday's meeting, but would like to comment. When I moved to Michigan in early 80's I hunted both waterloo and pinkney areas for grouse and woodcock and did well. There were several areas of good production. Most of these areas have become overgrown with multiflora rose and autumn olive. A little olive and a little rose is good. A lot is sterile. For the last many years I have hunted, hiked, mushroom hunted, fished and enjoyed both areas. I would have to say that other than around the Potowotami trail, I have seen next to no non-hunter/fisher users. The area between Pickerel lake and Silver lake are usually occupied by hikers and bikers. The Waterloo area is essentially devoid of those people to my many hours/ days of observation. The Gorman lake area has been closed off for motor traffic now for a few years, and is becoming over grown such that the former hikers are gone. I was out there just a week ago, and only the first quarter mile of trail is used at all. I met a fellow birdwatcher then, and he had not gone but to the back if Island lake where the trail peters out. I was going to drag my canoe into the lake, but found the going impossible with even that small (12 ft) craft. I do not believe the area is being used by non-hunters or fishers, and doubt it is being used by anyone not a deer or turkey hunter. (that latter group includes me)

Management for the two areas for those groups who pay no excise taxes to support the management costs, nor buy use licenses (hunting/fishing) for the same seems to be unfair. Management of the areas for those who actually use them would make more sense to me. The Pinkney area is just fine left to the hikers and bikers, but the off trail areas could use some management in both units.

Thank you for holding these meetings.

Sincerely, James R. Gilsdorf

I'm an officer of SOLAR, the School for Outdoor Leadership, Adventure and Recreation. Although my comments below are not made on behalf of the organization, I believe they generally represent the interests of SOLAR members. SOLAR has over 400 members in southeast Michigan. SOLAR members use the Pinckney and Waterloo Recreation Areas in pretty much every way possible. In particular, at least four classes offered through the club each year rely on Waterloo. The Basic Backpacking and Winter Camping classes do an overnight trip from the Discovery Center to Green Lake, and the Basic Land Navigation classes use one of the Burns Cabins and the area around the headquarters twice a year. Aside from these classes, there are formal group activities (hikes, etc.) in these parks, and frequent individual visits as well. I personally have backpacked the Waterloo-Pinckney Trail end-to-end-to-end, enjoyed numerous day hikes in all seasons, led the navigation class, and spent well over a dozen nights in the parks. They are a fantastic asset, and I don't visit them nearly as often as I would like. To the best of my knowledge, these parks represent the only backpacking opportunities in southeast Michigan, which makes them uniquely valuable. Thus, I think protecting the quality of that attribute should be given the highest priority. Other priorities include making sure that existing amenities are well maintained, and expanding and consolidating park lands when the opportunity arises. Addition of new amenities is less of a priority.

Pinckney:

I question the benefit of the proposed new yurt in Pinckney, if the revenues it generates would not be used to subsidize other projects in PRA. Also, it was indicated that the location proposed for the yurt would need to be "rezoned", as such an activity would be incompatible with the area's current designation. What, then, is the value of the zoning, if activity incompatibilities are resolved by changing the zoning rather than the activity? The proposed addition of a hand pump at the Potawatomi trailhead would be valued by trail users. I don't recall whether this would be at the hiking trailhead or the mountain bike trailhead, if it was even specified. Since mountain bikers and hikers go in opposite directions it would only benefit one of those groups. A hand pump might actually be more valuable somewhere else on the loop where both groups could use it for refills. A few more simple amenities (benches, picnic tables, etc.) along the loop would be nice, but not more than a few. Specifically, I think Gosling Lake would be a great place for people to be able to stop, sit, and possibly even use an outhouse... Sadly, I do realize that such amenities impose an ongoing maintenance cost, are subject to vandalism, etc. I think the greatest potential user conflict is between mountain bikers and hikers, but as a hiker I feel that the vast majority of bikers are safe and courteous. I rarely encounter hunters. Both groups, however, seem to leave more than their share of trash behind - I pick up a lot of reflectors, water bottles, tear-off tabs from GU packets, and spent shells. ALL users could do a better job of cleaning up after themselves; perhaps some signage would help.

Waterloo:

I am skeptical that Aggregate Industries will remediate/revegetate the affected area to a high quality landscape. It will be essential to make sure that sufficient funds are set aside to do the job properly, and to monitor the process and enforce specifications as it is being done. More opportunities for loop hikes would be nice, as would a very few more opportunities for rustic or dispersed camping. I think the user conflicts in Waterloo are more challenging, due to the sharing of trails by hikers and equestrians. Though I've found the riders themselves to be friendly and courteous, I think the activities are inherently less compatible. It's been my experience that, compared to other uses, horseback riding has a disproportionate negative impact on trails. Unfortunately, I realize that there's no simple solution. Segregating the groups on separate trails might do the trick if each group clearly understood which trails to use (marking them well would be critical). I wonder where this would end, though - for example, if

mountain bikers asked for it, would a dedicated trail system be created for them, too? More trails would mean more impact on the natural area and of course would not mitigate the impacts of horses.

In conclusion, I feel the biggest threat to both parks is overuse – being “loved to death”. Thus, I fear that efforts to draw more visitors may be counterproductive, and diminish the experience of all users. Nonetheless, I understand that more users WILL come regardless, and planning for and managing that growth is preferable to ignoring it. I am grateful for the opportunity to be a part of that process.

Waterloo Hunt Club Phase 2 phone comment

August 8, 2012

Sally Stommen, Waterloo Hunt Club member

(She is dentist in Grass Lake and “lead rider” for past 20 years)

Property in question was purchased by Hunt Club members, then sold to DNR years ago, in order to prevent it from being lost to the Hunt Club for riding purposes. Louie Boone, who lives in Scio Township, was one of the buyers/sellers. Mr. Boone is now 80+ years old and no longer rides. Dr. Fred Traeger was the other buyer/seller and is now deceased. It is the Hunt Club’s understanding, confirmed by Louie Boone, that DNR agreed to allow Hunt Club to continue riding the ridge trail. Trail has been in use for 65 years and is essential to connecting two of their riding areas. They are concerned that the Primitive designation will prevent them from continuing to obtain a use permit for the ridge trail. Members would be willing to take DNR staff out to review the trail location. Sally noted that she is in regular contact with Gary Jones. Sally indicated that she spoke with one of us at a meeting preceding the July 17th Open House and that she was promised that we would look into this concern and evaluate the Primitive zone designation in the area of their ridge trail.

David Birchler’s suggestion for discussion:

While this is a Phase 1 zone issue, perhaps a future amendment could be recommended in the Phase 2 Action Strategies for the Primitive Zone that would designate a Backcountry buffer for this ridge trail.

Sign-In Sheet

Name	Affiliation
Dana Farrell	Greater SE Ruffed Grouse Society
Gary J. Scypta	Greater S.E. Ruffed Grouse Society
Ati Tislerics	S.O.L.A.R.
Norm Roller	MMBA/Sierra Club
Jeff McWilliams	S.O.L.A.R.
Mike and Jack Casey	Aberdeen Bike
Deborah Kanks	Hiker
Barry Lonik	Sierra HRWC
Arlene Taylor	Waterloo Hunt Club
Dan DeVito	Greater SE Ruffed Grouse Society
Ron Sell	Sierra Club HVG
Chad Simpson	WHA
Jan Herrick	ETS
Stuart Rossman	WHA
Dale Lesser	
Jason Aric Jones	N/A
Greg Peter	Chelseas Rod & Gun
Charity Steere	Legacy Land Conservation and Waterloo Hunt
Becky Oufiu	WHA & MTRA
Sally Stommen	Waterloo Hunt
Jeff Stommen	Waterloo Hunt

**DEPARTMENT OF NATURAL RESOURCES
Phase 2 Public Input Open House
Pinckney & Waterloo State Recreation Areas**

October 2, 2012 from 6 – 8 p.m.
Eddy Discovery Center

1. Introductions at 6:00 pm

2. Brief Presentation of Management Planning Process and Status (15 minutes)

- a. Review Phase 1 Management Zone Maps
- b. Action Goal Development – Draft 10-year strategies to address Management Zone Map
- c. Pinckney Planning Team Draft Action Goals organized by:

- General Action Goals
- Primitive Zone
- Backcountry Zone
- Natural Resource Recreation Zone
- Developed Recreation Zone
- Visitor Service Zone

d. Review of Waterloo Planning Team Draft Action Goals

- General Action Goals
- Primitive Zone
- Backcountry Zone
- Natural Resource Recreation Zone
- Developed Recreation Zone
- Visitor Service Zone
- Scenic Overlay Zone
- Cultural Landscape Overlay Zone

- e. Priority Exercise explained
- f. Action Goals input sheets described
- g. Questions and Answers

3. Open House (1 hour 45 minutes)

- a. You are invited to visit each of the stations and talk to Planning Team members
- b. Color dots are available for you to identify your priority actions (please limit yourself to 10 dots per Recreation Area)
- c. Action Goal input sheets are available for you to contribute additional suggested actions goals

4. Adjournment at 8:00 pm

General Action Goals		
Action Goal	Target Date	Responses
Natural Resources		
1. Develop an Invasive Species Plan	5 Years	11
2. Develop (Phase 1) Stewardship Plan	5 Years	1
3. Implement (Phase 2) Stewardship Plan for the park	On-going	0
4. Implement the specific provisions of the Biodiversity Stewardship Plan (BSP)	On Hold	0
5. Update Natural Features Inventory	On-going	4
6. Stewardship will continue to provide input into leased farm areas	On-going	0
7. Survey and manage the aquatic system within the recreation area to identify resources and assess opportunities.	On-going	0
8. Refine survey of EMR habitat and follow EMR management guidelines (in All Applicable Zones where CCAA applies)	1 Year (survey) & On-going (guidelines)	0
9. Preserve the quality of the known exemplary natural communities	On-going	0
Historic / Cultural Resources		
1. Develop a cultural resources inventory of the park for interpretation, protection and preservation	Completed But On-Going Maintenance	3
2. Develop and conduct monitoring program for archeological resources	On-going	1
3. Protect archaeological/cultural resources identified by inventory	On-going	0
4. Review all proposed earthwork activities for potential impact on historic/cultural resources	On-going	1
Recreation Opportunities		
1. Maintain park open to hunting.	On-going	4
2. Identify opportunities to improve connectivity within and beyond park boundaries; e.g. opportunities to connect Waterloo RA through Pinckney RA to Lakelands Trail, Hudson Mills Metropark, Park Lyndon	2 Years	47
3. Consider ecotourism opportunities	On-going	1
4. Identify water trail connections	2 Years	3
5. Coordinate County and Local Recreation Partners interpretation activities into Recreation Area programs.	On-going	1
6. Develop ADA hunting opportunities	5 Years	0
7. Identify opportunities for additional hiking trail loops and dispersed rustic camping	2 Years	10
8. Partner with neighboring communities to: (1) actively promote appropriate trail connections through and abutting the Recreation Area and (2) jointly develop trail routes that support the goals of the local partners, Pinckney and Waterloo Recreation Areas, and the PRD.	On-going	9
9. Determine feasibility and identify potential route(s) for a mountain bike connection between and through both Recreation Areas that would: (1) respect the trail integrity and visitor experience for hikers on established Waterloo-Pinckney Trail, and (2) afford physical connections to partner communities' trail systems.	Up to 2 Years for Planning Development - TBD	68
Education Opportunities		
1. Develop specific interpretation and education opportunities	On-going	3
Management Focus		
1. Land acquisition within dedicated boundary	On-going	35
2. Modify NRC boundary per the Phase 1 plan recommendation	2 Years	0
3. Prepare an Emergency Plan	Completed with Annual Update	1
4. Complete "sign-off" of the Wildfire Plan	2 Years	0
5. Explore and develop revenue generating opportunities that are sustainable.	On-going	1

6. Dedicate staffing and budget resources to address goals (including partnerships and volunteers as appropriate)	On-going	0
7. Promote volunteer partnerships to meet resource goals	On-going	15
8. Develop a marketing plan for this park based on natural and historic resources found within the park, as well as its relationship to Pinckney RA	5 Years	3
9. Utilize variety of old and new media, including audio and visual technologies, podcasts, and the like for interpretation.	On-going	0
10. Negotiate a site-specific co-management agreement with Wildlife Division	2 Years	0
11. Develop lease area for Fox Hunt Club	1 Year	9
Development		
1. Develop assessment of satellite parking areas to analyze need, location and/or potential elimination	2 Years	3

Primitive Zone		
Action Goal	Target Date	Responses
Natural Resources in Primitive Zone		
1. Preserve/protect the native vegetation communities and habitat for species of special concern	On-going	14
Historic/Cultural Resources in Primitive Zone		
1.		
Recreation Opportunities in Primitive Zone		
1. Maintain and enhance low-impact opportunities for hunting/fishing/gathering/trapping, bird watching, and trail use	On-going	8
Education Opportunities in Primitive Zone		
1. Develop interpretive messages for access points to the zone	5 Years	0
2. Coordinate interpretation activities with Recreation Partners	5 Years	0
Management Focus in Primitive Zone		
1. Address user conflicts	On-going	0
Develop in Primitive Zone		
1. Develop interpretive messages at access points to the zone	5 Years	4
2. Use parking assessment to improve parking/access to the zone	7 Years	0

Backcountry Zone		
Action Goal	Target Date	Responses
Natural Resources in Backcountry Zone		
1.		
Historic/Cultural Resources in Backcountry Zone		
1.		
Recreation Opportunities in Backcountry Zone		
1. Identify expansion of rustic camping accommodations	1 Year	9
2. Maintain and enhance opportunities for birding hunting/fishing/gathering/trapping	On-going	6
3. Investigate feasibility and impacts of trail expansion proposals for equestrian and/or mountain bike use	On-going	71

Education Opportunities in Backcountry Zone		
1. Develop/install kiosks and displays appropriate to the zone	5 Years	6
Management Focus in Background Zone		
1. Address user conflicts	On-going	21
2. Identify and promote the Education/Interpretation opportunities in the zone	On-going	0
3. Promote volunteer partnerships to meet resource goals.	On-going	2
Development in Backcountry Zone		
1. Upgrade and/or re-route trails to accommodate use compatible with natural character of zone	On-going	27
2. Improve ADA accessibility compatible with the natural character of the zone	On-going	0
3. Restore and/or re-route unsustainable segments of trails	5 Years	14
4. Use parking assessment to improve parking/access to the zone	7 Years	3

Additional Comments for Backcountry Zone:

1. Develop mountain bike trails from equestrian. Mountain bike trails allow for dual use with hiking, cross-country skiing. There are already many trails for equestrians. Gain IMPA "epic" status for a new Waterloo mountain bike trail.
2. Would like segregated mountain bike trails from segregated equestrian trails.

Natural Resource Recreation Zone		
Action Goal	Target Date	Responses
Natural Resources in Natural Resource Recreation Zone		
1. Annual review of Aggregate Industries implementation of the reclamation plan	Annual (length of lease)	0
Historic/Cultural Resources in Natural Resource Recreation Zone		
1.		
Recreation Opportunities in Natural Resource Recreation Zone		
1. Investigate feasibility and impacts of trail expansion proposals	On-going	39
2. Maintain and enhance opportunities for hunting/fishing/gathering/trapping, bird watching, trail use and camping	On-going	6
3. Identify expansion of rustic camping accommodations	On-going	6
Education Opportunities in Natural Resource Recreation Zone		
1.		
Management Focus in Natural Resource Recreation Zone		
1. Preserve and protect the cultural resources	On-going	1
2. Address user conflicts	On-going	5
Development in Natural Resource Recreation Zone		
4. Restore and/or re-route unsustainable segments of trails	5 Years	20

Developed Recreation Zone		
Action Goal	Target Date	Responses
Natural Resources in Developed Recreation Zone		
1.		
Historic/Cultural Resources in Developed Recreation Zone		
1.		
Recreation Opportunities in Developed Recreation Zone		
1. Prepaer an assessment of alternatives, including Camp Waterloo, for relocating the equestrian camp and evaluate potential amenities that could be offered.	2 Years	1
Education Opportunities in Developed Recreation Zone		
1. Utilize Boat Access Sites (BAS) study to make improvements as needed	On-going	1
2. Assessment of alternatives for relocation of equestrian camp (include Camp Waterloo)	2 Years	0
Development in Developed Recreation Zone		
1. Restore Mill Lake cabins to serve as rustic cabins	5 Years	13
2. Expansion of over-night accommodations at Portage Lake, Sugar Loaf Lake and Green Lake Campgrounds.	5 Years	6
3. Analyze potential for lease agreement of The Stable to provide public riding opportunities	1 Year	4

Visitor Services Zone		
Action Goal	Target Date	Responses
Natural Resources in Visitor Services Zone		
1. Implement a plan for invasive species removal	1 Year	16
Historic/Cultural Resources in Visitor Services Zone		
1. Evaluate fisheries research building for historical or cultural significance	7 Years	1
Recreation Opportunities in Visitor Services Zone		
1. Complete the Stewardship Demonstration Prairie	3 Years	2
Education Opportunities in Visitor Services Zone		
1.		
Management Focus in Visitor Services Zone		
1. Development of a management plan for interpretation and programming	3 Years	1
Develop in Visitor Services Zone		
1. Evaluate relocation of headquarters to improve customer service	2 Years	

Scenic Overlay Zone		
Action Goal	Target Date	Responses
Natural Resources in Scenic Overlay Zone		
1. Follow underlying zone recommendations and/or general recommendations		
Historic/Cultural Resources in Scenic Overlay Zone		
1. Follow underlying zone recommendations and/or general recommendations		
Recreation Opportunities in Scenic Overlay Zone		
1. Follow underlying zone recommendations and/or general recommendations		
Education Opportunities in Scenic Overlay Zone		
1. Follow underlying zone recommendations and/or general recommendations		
Management Focus in Scenic Overlay Zone		
1. Follow underlying zone recommendations and/or general recommendations		
2. Vegetative management to maintain or enhance the viewsapes	On-going	
Develop in Scenic Overlay Zone		
1. Follow underlying zone recommendations and/or general recommendations		
2. Provide pull-off location for scenic views of Aggregate Industries property and other opportunities.	4 Years	

Cultural Landscape Overlay Zone		
Action Goal	Target Date	Responses
Natural Resources in Scenic Overlay Zone		
1. Follow underlying zone recommendations and/or general recommendations		
Historic/Cultural Resources in Scenic Overlay Zone		
1. Follow underlying zone recommendations and/or general recommendations		
Recreation Opportunities in Scenic Overlay Zone		
1. Follow underlying zone recommendations and/or general recommendations		
Education Opportunities in Scenic Overlay Zone		
1. Follow underlying zone recommendations and/or general recommendations		
Management Focus in Scenic Overlay Zone		
1. Follow underlying zone recommendations and/or general recommendations		
Develop in Scenic Overlay Zone		
1. Follow underlying zone recommendations and/or general recommendations		

**PINCKNEY & WATERLOO RECREATION AREAS
10-YEAR ACTION GOALS**

ADDITIONAL ACTION GOALS TO CONSIDER:

Action Goal	Recreation Area
1. Dispersed camping opportunities – plenty of room for it. Right now, someone can only do this up north in state designated natural forests	Both
2. Designated path for bike access to beach area at Silver Lake after ride/swimming	Pinckney
3. Look at the CAPT/DART regional transit path plan and coordinate with them. CAPT = Chelsea Area Planning; DART = Dexter Area Region Transit	Both
4. Explore better forest management, including opportunities for selective logging/harvesting as income stream and to improve health of forest	Both
5. Open more equestrian trails south of Patterson Lake, West of Kelley	Pinckney
6. Have access to trails for equestrians from Waterloo to Pinckney – maybe by special permit.	Both
7. In the description of the activities both 'bicycling' and 'mountain biking' are used. I asked one DNR person if that meant 'bicycling' is on pavement and 'mountain biking' is on trail. He said that they both mean 'mountain biking.' Please define the terms more clearly in your plan so it is clear what kind of activity you are referring to.	Both
8. Improve directional signage and welcoming character of entrances	Both
9. Improve maps, ID roads around lakes on maps. More details	Both
10. Improve signage regarding use of trails. Can they be used for bikes.	Both
11. Welcome center areas for backcountry camping registration.	Both
12. Goal regarding ongoing feasibility to study trail use needs to be redefined to be more specific as an action goal with deadlines	Pinckney
13. Incorporate the mountain biking trails to go by some of the scenic overlay zones.	Waterloo
14. Establish professionally designed bike trails which pass by interesting historic/natural areas	Waterloo
15. Inclusion/planning for mountain bike trails that can possibly connect to Pinckney RA.	Waterloo
16. Establish sustainable, world-class mountain bike trail in conjunction with MMBA/IMBA	Waterloo
17. Use aggregate industries land as site for MTB skills area, pump track, jump zone, etc.	Waterloo
18. Have short trails open to biking at Sugar Loaf – my kids used to ride some of the trails but last time we went there a “no bikes” sign was posted; no we camp elsewhere since my kids want to ride their bikes	Waterloo

Carlos Fetterolf
3125 Silver Maples Dr.
Chelsea, Michigan 48118
ph/fx 734-433-2661 - - fetcarnor@comcast.net

2 Oct 2012

Comment to the MDNR re Pickerel Lake as part of the Long
Range Planning for the Waterloo and Pinckney Recreation Areas

The MDNR made an excellent decision re Pickerel Lake some 5-
plus years ago by removing the dock and NOT constructing an
access for larger motorized boats , e.g. bass boats, thus preserving
the quiet character of this geologic treasure. The public
demonstrated it's love affair with Pickerel Lake at the public
hearing and the Department responded well.

Looking to the future of this unique gem, the MDNR seems to be
overlooking an opportunity for fishery management. The lake is
listed as a trout lake, but has not been stocked for several years as
far as I know. Rainbow trout provided a fishery not often found in
southern Michigan, especially within striking distance of the Ann
Arbor and Lansing urban areas.

Lake herring (ciscoes) had a self sustaining population in past
years in Pickerel Lake. I'm no sure of the current status, but it
could be reestablished/supplemented from St. Marys River stocks.

The current launching facility makes it difficult for handicapped
folks (old age included) to drag a stable boat to the water from the
parking area. With some modification an easier launch could be
accomplished without compromising the swimming area.

Thank you for the opportunity to comment. Let's all look forward.

Bikers and horses: Don't just let them.

Rork Kuick [rork@umich.edu]

Sent: Thursday, October 04, 2012 10:13 AM

To: David Birchler

Dear David Birchler, and managers of the Waterloo and Pinckney recreation areas,

Thanks for the presentation and other information at the Discovery Center on Oct1. I want to write the rec area managers to ask them not to give the horse and bike people everything they want. I have many other priorities, but am most worried about them. I'd also ask that the horses not be allowed their special days to use trails normally restricted to foot traffic. It's not fair to the rest of us to have our trails chewed up in a single day. It's quite upsetting.

The goals of I and my friends when visiting the Waterloo and Pinckney recreation areas is to hunt deer and turkeys, fish, study (and sometimes collect) mushrooms and berries, botanize, walk, swim, and just see beautiful scenery, plants, and animals. I particularly value the incredible diversity of wetlands, and also the forest areas with the oldest trees which I think might be undervalued, since people I take there are surprised to see some of the best big-tree forests in all of Michigan, here, down south. I'm very concerned about invasive plants, particularly autumn olive and alien buckthorns and honeysuckles that have made some areas I once found beautiful to be impenetrable, or ghastly. I kill such plants and many others regularly as a volunteer steward for the DNR at both these rec areas and several others. I hope to do more stewardship work directly for the rec areas.

A main reason I write is that I'm very concerned that the mountain bikers and horse people are very over-represented in this process, and they have worked hard to insure that. They may figure that by coming out in force they will have influence beyond their actual numbers or their cost/benefit. I hope that's not true since their wishes are opposed to mine, and I think many other people as well, who are not coming to give feedback at these meetings. I hope that instead that the interests of all the users, present or not, is what matters, and that there are estimates of that use. For example, it wasn't a good day to get hunters out to a meeting outside their tree-stands since it was Oct 2. A meeting about such a detailed local matter doesn't make it on the radar of the average hunter, birder, or mushroom hunter. We mostly just depend on you to not screw the area up too badly.

I am asking for no expansion, or very limited expansion, of horse or bike trails. Ideally for me, there would be none at all, but I understand about multiple uses and some fairness and that I'm not the only user. They should get some space, the question is how much. I ask it not be too much, perhaps no more than now, because the truth is they do ruin it to some extent for the rest of us. Even a single bike trail through a block of land can mean there are few or no remaining circular walks one can take and not have to use a bike or horse trail in that area. I live near Silver Lake and used to walk there very often but now almost never, and that switch is entirely about bikers. These folks will try very hard to expand their opportunities, while those opposed, though perhaps legion, are not as motivated to try and stop them for asking for a bit more here or there. Hunters will just move to use other blocks of land, or other public land entirely, as will other users who find the experience of the horse and bike trails diminishes the area. We've done it before. I'm not a birder, but have not noticed the birders impact me in a negative way that is a hundredth of the impact of the horses and bikes.

Please don't expand their trails too much, since it is a loss for me, and very many other people.

Rork Kuick
9664 Timber Hill Ct.
Dexter MI 48130
rork@umich.edu

Proposal from the Communities Surrounding the Waterloo-Pinckney Trail

Supporting Community members: Township Supervisors: Grass Lake Twp. - Jim Stormont, Waterloo Twp.- Doug Lance, Lyndon Twp. - John Francis, Chelsea Major-Jason Lindauar, Chelsea Wellness Foundation - Amy Heydlauff , Fitness Council of Jackson– Scott TenBrink, Community cycling advocates: Mike Casey, Ruth Riediman State Rep- Mike Shirkey

Proposing:

Allow mountain bikers access to the Waterloo & Pinckney Recreation Areas.

There are many wonderful uses of the Waterloo- Pinckney Trail; hiking, horseback riding, hunting, bird watching, snow shoeing, cross country skiing as well as other outdoor activities. The goal of this committee is to allow access of bicycles to the sections of the trail that are currently prohibited. This area is west of the Potawatomi Trail.

Our overall goal is creating a trail system or loop that would extend from Portage Lake in Jackson County to the Pinckney Recreation Area.

There are four short term goals of mountain biking for the Waterloo Pinckney trail.

1. Allow immediate access to existing trails that are not utilized by horses.
2. Be allowed to repair and reroute sections of the Trail that are damaged or in disrepair.
3. Develop and Design a trail loop with the help of the MDNR.
4. Hold an annual mountain bike race to help promote the trail system.

Our vision is to design and build an epic trail system that would attract users from all over the Midwest and beyond. This proposal already offers the natural beauty and terrain for the intended use. The proposed trail will also offer local community's additional options to promote healthier life styles. We hope to create a long term solution so that the local community's can be provided a trail system for bike riders and hikers while keeping in mind all user groups. We hope to utilize as much existing trail as possible. We do see the need to add new return trails to complete a loop and to bypass the existing horse trail system between Mt. Hope Rd. and Sugarloaf Horseman's Campground.

The proposed trail will be a long term project that will be done in stages but to be completed in 5 years or less. We will be able to do this project utilizing several local and regional organizations such as MMBA, IMBA, the Chelsea Wellness Foundation, and the MDNR. We plan to request additional chapters of the MMBA as well as the creation of our own local nonprofit group which will be known as "Friends of Waterloo-Pinckney Trail." They will help coordinate the maintenance and building the trail. We will utilize the expertise of IMBA and the MDNR for designing and building of the trail. We will also provide funding for materials needed that are unable to be provided by the MDNR.

We plan to hold an annual mountain bike race to help promote the area and raise funds to help maintain the trail. We would enlist a regional race promoter to help manage the race. The race, as we see it, will be a point to point race which would start at one end, possibly Portage Lake and finish at the end of the trail in Pinckney.

Advantages in allowing biking on the Waterloo Pinckney trail:

1. Financial impact to local communities by regional visitors using the trail system. This will benefit all retailers and bring great exposure to the surrounding communities.
2. Offer additional reasons to access trail system and healthy use of public land.
3. Increased usage will increase purchases of Michigan State Park Passports.
4. Development of a more user friendly and better maintained trail system.
5. Increase the health of surrounding community members by offering additional outdoor activities.
6. Decrease of illegal activity on public land.

As seen throughout the State of Michigan, when bicycle accessible trails are made available they get used. Our surrounding communities are committed to cycling and an active life style as seen by the growing use of the Fallingwater Trail in Jackson County and the Lakelands Trail in Hamburg County. Projects are being proposed to connect the two trails. Both trails have had great success for businesses and overall community support, and we hope to have the same success. We hope to expand on the success and add additional options for bike riders. Currently there is not a mountain bike trail system for community's west of highway M52. Bikers want to have access to the natural beauty of the Waterloo- Pinckney Trail. Adding mountain biking to this area would help make the Waterloo & Pinckney Recreation Areas a true destination in our state.

Waterloo Area Mountain Bikers (WAMB) Trails Working Group

BACKGROUND

Since mountain biking first came on the scene as an outdoor activity in the mid- to late-1980s, Michigan mountain bikers have been trying to secure trail access at Waterloo Recreation Area (RA), the largest State RA in Southern Michigan, located in Eastern Jackson and Western Washtenaw Counties. While neighboring Pinckney RA management was an early adopter in accommodating off-road bicycling on its Potawatomi Trail, Waterloo Area management was never receptive to accommodating the needs of cyclists despite being managed by the same State of Michigan Agency – the Department of Natural Resources (MDNR). Recently, as a result of a new MDNR Master Planning Phase for Waterloo RA and associated stakeholder input, the MDNR has moved to create access for mountain bikers at Waterloo, deciding it “*will support a separate (new) mountain bike trail (at Waterloo RA) that does not conflict with the hiking trail experience*”.

In an August 6, 2012 letter to various stakeholders, Paul N. Curtis, Park Management Plan Administrator with the MDNR Parks and Recreation Division wrote the following:

We will look at (proposal for mountain bike trail) in a broader context, with the following desired outcomes (action goals) that do not pre-suppose use of any one particular existing trail:

- *Connection of Pinckney RA and Waterloo RA by mountain bike trail and development of mountain bike trail loop(s) within Waterloo RA by development of a separate trail that does not conflict with other park users including Michigan Mountain Biking Association (MMBA), equestrians, hikers/runners, and other trail users.*
- *Specific mountain bike trail route plans to be developed by mountain bike interests in collaboration with all impacted user groups and the MDNR.*
- *Seek collaborative funding sources to help develop and maintain mountain bike trails.*
- *Promotion/marketing of mountain bike trail opportunities, including the holding events, to help support operation and maintenance of the mountain bike trail system.*
- *Promotion of neighboring communities’ trail connections to/from Waterloo and Pinckney RA.*
- *Establishment of a mountain bike trail support group.*

Subsequent to this letter, Jason Aric Jones, the current Potawatomi Mountain Biking Association (PMBA) Trail Coordinator at neighboring Pinckney Recreation Area who acts as a liaison between the MDNR Pinckney RA Manager and the mountain bike community, initiated discussions with various area mountain biking related stakeholders regarding the August 6, 2012 MDNR letter. The resulting general consensus of the discussion participants was that it would be beneficial to assemble a working group with the mission of facilitating a feasibility study of Waterloo with an end goal of coming up with a tangible plan for a new mountain bike trail system.

The purpose of this document is to layout the objectives, action steps and timelines of the Waterloo RA Mountain Bike Trails Working Group (WWG). This document will be shared with area mountain bike stakeholders in the Greater Waterloo Area with an established record of involvement in mountain bike trails advocacy, construction and maintenance in an effort to solicit their involvement with and membership on the WWG.

OBJECTIVE

The objectives of the WWG with respect to establishing new mountain bike trail at Waterloo RA will be as follows:

1. **Analyze Feasibility**

Action Steps:

A. Desk Review

- Use layered .pdf maps provided by MDNR Consultant Birchler-Arroyo that indicate Park boundaries, management zones and topography to assess “best options” for mountain bike trail in each area of the RA. The RA will be divided into several different sections, with sub-groups of the main WWG taking on the responsibility of assessing each section.

- B. Field Review
 - Building on the findings of the Desk Review, the Field Review will confirm and validate “best options” for each section by walking the areas identified during the desk review.
- C. Aggregation of Findings
 - Each sub-group assessing various “best options” for trail during the Desk and Field Review phases will come together with the stated goal of piecing together section review findings in an effort to assemble several potential options for a complete mountain bike trail plan.
- D. Prepare Report for MDNR
 - The several identified options for a complete mountain bike trail will be assembled in a written report and provided MDNR Parks and Recreation Division Planners for review.

2. Recommend Trail Options to MDNR

Action Steps:

- A. Submit Report to MDNR
 - The aforementioned report will be submitted to MDNR Parks and Recreation Division Planners for review. This report will also be provided, at the discretion of the MDNR, to other RA stakeholder groups and the public for comment.
- B. Receive Feedback on Options
 - Feedback and input from the MDNR and other stakeholders will be assessed.
- C. Work with MDNR to Select Options and Finalize a Plan
 - New trails plans for use by mountain bikers will be solidified.

3. Complete Implementation of Plan and Development of Trail

Action Steps:

- A. Formation of permanent Waterloo Area Mountain Bike Association 501(c)(3)
- B. Determine Best Options to Realize Trail Plan
 - i. Assess Potential Use of Professional Trail Builder & Volunteer Labor
 - iii. Assess and Actualize Fundraising Needs for Initial Construction
 - iv. Assess and Actualize Fundraising Needs for On-Going Maintenance
- C. Exercise Completion Options and Create Trail

ACTION STEP TIMELINE

Mid-September 2012 through October 2012

- Email pre-identified WWG members and communicate WWG plan, objectives, action steps and timeline.
- Have initial meeting to:
Introduce members and initiate Desk Review process, including the explanation of use of consultant provided digital maps and sectional divisions, formation of sectional sub-groups and distribution of map materials via DropBox.
- Commence and complete Desk Review

October through December 2012

- Sub-groups commence Field Review after leaves fall and sightlines clear to validate desk review findings and confirm/establish general (not specific) best trail route options. Sub-groups may meet in-person or virtually to discuss findings as they deem necessary.
- Sub-groups will plot out best trail options with generalized accuracy on either on GIS Topo or consultant provided digital maps for each of their respective sections

January through February 2013

- The totality of the WWG will meet in-person as necessary in order to compile best trail options routes to be presented to the MDNR. Detail to be compiled will include not only trail plotting on maps, but also qualitative narrative highlights to be included in the written report/plan for the MDNR.

March 2013

- Report will be compiled by members of the WWG to be determined and presented to the MDNR by the end of March.

March 2013 through August 2013

- Plan review and feedback, followed by finalization with the MDNR.

September 2013 – December 2013

- Trail construction phase initiates, full completion date TBD

Appendix B –Planning Team Meeting Summaries

A G E N D A

**MICHIGAN DEPARTMENT OF NATURAL RESOURCES
PARKS AND RECREATION DIVISION
Pinckney & Waterloo Recreation Areas
General Management Plan – Phase 2 Kick-Off Meeting
April 10, 2012
Eddy Discovery Center
Waterloo Recreation Area**

Planning Team Meeting: 10:00 a.m. – 12:00 p.m.

1. Introductions
2. Review Phase 1 Management Plans
 - Management Zone Maps
 - Summary Sheet of Approved Management Zones
 - Review and Discuss Management Zones with Planning Team
3. Timelines & Milestones
4. Outcomes of Phase 2
5. Identify responsibilities of resource program team members
6. Identify additional stakeholders
7. Identify known conflicts/unresolved issues
8. Next Meeting Date

**DEPARTMENT OF NATURAL RESOURCES
Phase 2 Stakeholder Input Review Meeting
Pinckney & Waterloo State Recreation Areas**

**April 10, 2012 from 10:00 AM – 12:00 PM
GoToMeeting**

1. Meeting Attendees: Paul Curtis, PRD; Gary Jones; Lisa Gamero; Katie McGlashen; Chuck Dennison; Joe Strach; David Birchler; Susie Roble
2. The purpose of the meeting was to review how the stakeholder's prioritized the long-term action goals, and additional stakeholder comments.
3. All Action Goal revisions were inserted directly into plan

**DEPARTMENT OF NATURAL RESOURCES
Phase 2 Planning Team Meeting #2
Pinckney & Waterloo State Recreation Areas
May 15, 2012 from 10:00 AM – 3:00 PM
Eddy Discovery Center**

1. Meeting Attendees: Paul Curtis, PRD; Kristen Bissell, Wildlife Division; Jeff Braunscheidel, Fisheries Division; Matt Lincoln, PRD; Lisa Gamero, PRD; Greg Byce, PRD – Waterloo; Chuck Dennison, PRD – Pinckney; Ray Fahlsing, PRD; Bill Boik, Paul's Boss; Gary Jones, PRD-Waterloo; David Birchler, BA; Susie Roble, BA
2. Review of Legal Parameters Summary
 - Land Acquisitions
 - LWCF strings attached to entire park, if not limited in the original grant application
 - Jeff recommended we assemble a more comprehensive description of what the funding source limitations are; contacts include Earl Flegler – Wildlife, Public Land Coordinator; Christine Hannaburg – Federal Aid Coordination – Wildlife; Paul Yauk - PRD
3. Worked on Draft Phase 2 Long-Range Action Goals Plan for Pinckney RA and Waterloo RA
 - See revised draft

**DEPARTMENT OF NATURAL RESOURCES
Phase 2 Stakeholder Input Review Meeting
Pinckney & Waterloo State Recreation Areas
August 9, 2012 from 10:00 AM – 12:00 PM
GoToMeeting**

1. Meeting Attendees: Paul Curtis, PRD; Gary Jones; Lisa Gamero; Katie McGlashen; Chuck Dennison; Joe Strach; David Birchler; Susie Roble
2. The purpose of the meeting was to review how the stakeholder's prioritized the long-term action goals, and additional stakeholder comments.

Pinckney Comments

- We discussed how to handle the time frame of certain action goals that received higher priority by stakeholders. We decided that we should keep the assigned time frames so that the goal can be met in a realistic period of time.
- Paul commented that Ray and Glenn will need to determine how to handle the invasive species plan (ex: could be broken down into smaller action goals; Dave will follow up with Ray/Glenn)
- Hand pump Location comment – Chuck commented that the existing hand pump is at an key location because it is a water source for when the bathrooms are closed for the season
- Yurt Location comment – Paul commented that the Phase I GMP identifies a yurt as appropriate for the Primitive Zone (it's accessible via hiking or canoeing)

In general, we decided that we will respond to comments via a general thank-you letters stating that their comments were reviewed and acknowledged during this meeting.

Waterloo Comments

- We revised the goal concerning establishing a physical connection between Waterloo and Pinckney...etc.; this goal was moved to the Backcountry Zone and now reads, "Establish additional physical connection between Pinckney RA and Waterloo RA through Backcountry Zone by acquisition of property from MSU Foundation to re-route mountain biking trail around Park Linden." (This same change was made in the Pinckney Action Goals Plan)
- Chuck commented that the DNR is close to establishing a connection between Waterloo and Pinckney via the MSU Foundation property; this would re-route mountain bikers around Park Linden since they are currently not permitted through Park Linden
- Mike Casey's "epic trail system" proposal – Dave discussed his conversation with Amy from the Chelsea Wellness Foundation. Paul gave a brief overview of Mike Casey's proposal and Paul's response letter. We will develop general action goals that are applicable for both Pinckney and Waterloo: 1) one action goal will focus on potential improved connection between Pinckney and Waterloo for bikers; 2) another goal will focus on promotion of neighboring communities' trail connections to/from/through Waterloo and Pinckney RA.
 - Paul commented that the proposed bike trail cannot conflict with the experience of hikers using the hiking trails
 - Chuck noted that there's a need to repair/reroute unsustainable section of Poto trail before building a new trail. Also, 7-8 miles of PW Trail is on Poto and he doesn't support mountain bike race on the Poto PW segment.

- Paul and DB will take a shot at a new Action Goal, share with team for input. Paul will take the goal to Section Chief's meeting on Aug. 27th.
 - Waterloo is currently limited in ability to provide loop trails; only loop trail is located at Eddy Discovery Center (comment from Mr. Tislerics) – we made this a general action goal for Waterloo
 - The DNR is already working to identify additional, dispersed, rustic camping opportunities - we made this a general action goal for Waterloo
 - Waterloo Hunt Club – ridge line trail around the fen, directly across from the Waterloo Hunt Club. Gary mentioned that the trail is not on any trail map b/c it's not a designated trail. This needs to be worked out in the lease agreement as a recognized trail route. Leave will preserve the historical use, possibly by a Backcountry Corridor designation.
 - Equestrian Campground – relocate and expand the Action Goal regarding assessment

DEPARTMENT OF NATURAL RESOURCES
Phase 2 Planning Team Meeting
Review of Public Input Comments
Pinckney & Waterloo State Recreation Areas
October 26th, 2012
GoToMeeting

1. Meeting Attendees: Paul Curtis; Chuck Dennison; Dustin Corr; Gary Jones; Jeff Braunscheidel; Lisa Gamero; Joe Strach; Matt Lincoln; Dave Birchler; Susie Roble
2. Purpose of meeting was to review comments received at the public input meeting.
3. Review of “Additional Comments”
 - A. We determined that several of the comments are already embodied in Phase 2 action goals
 - B. New goals:
 - Coordinate with user groups, neighboring communities, and other local and state agencies to determine feasibility of a connection from Waterloo RA to Lakelands Trail SP. (added to Waterloo General Recreation Opportunities)
 - Develop a plan for improving all types of navigation aids to major units of both recreational areas, including on freeways, county road, internal roads/trails, GPS sources, park maps, and the like. (add under General Management Goals for both parks)
 - Evaluate opportunities for family-oriented loop trails near developed units (add under General Recreation Opportunities for both parks)
 - Evaluate and assess transitioning Green Lake Campground to an overnight lodging areas with a combination of cabins, yurts, and 5 rustic campsites. (under Recreation in Developed Recreation Zone for Waterloo)
 - Dave will draft a goal pertaining to the identifying sustainable routes for an equestrian trail east of the current Equestrian Campground for Waterloo.
 - C. Review of Action Goal Poster Activity Results
 - We decided to delete the second goal under General Management Focus for Waterloo since it didn't have any merit
 - D. Review of Emailed Comments