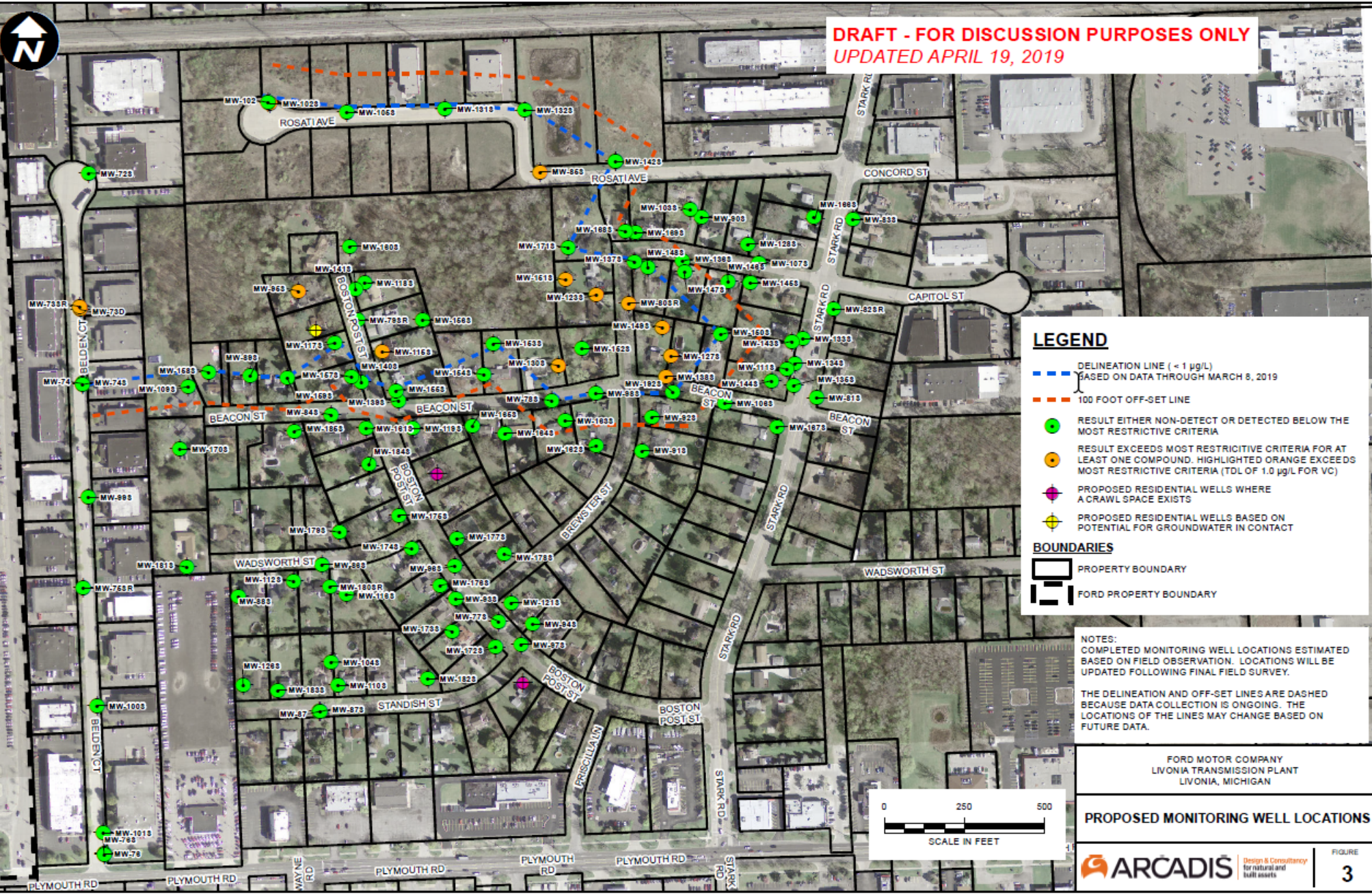




DRAFT - FOR DISCUSSION PURPOSES ONLY
UPDATED APRIL 19, 2019

CITY: Novi DIV: ENV. DB MG: PIC: R. ELLIS PM: K. HINSKEY PROJECT NUMBER: M0013220001 CDD RD: WASTE BY: STEAM, NAD 1983 StatePlane Michigan South FIPS 2113 Feet In GCS: SPCS12 ENV: Water Right: MW: Ford, West Rd: S: 3000 001 04402: File: MW: final_Completed_Corridor Update.dwg: DWY: 04162019 08:39:39 AM: BY: mmmiller



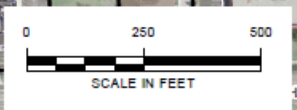
LEGEND

- DELINEATION LINE (< 1 µg/L) BASED ON DATA THROUGH MARCH 8, 2019
- 100 FOOT OFF-SET LINE
- RESULT EITHER NON-DETECT OR DETECTED BELOW THE MOST RESTRICTIVE CRITERIA
- RESULT EXCEEDS MOST RESTRICTIVE CRITERIA FOR AT LEAST ONE COMPOUND. HIGHLIGHTED ORANGE EXCEEDS MOST RESTRICTIVE CRITERIA (TDL OF 1.0 µg/L FOR VC)
- PROPOSED RESIDENTIAL WELLS WHERE A CRAWL SPACE EXISTS
- PROPOSED RESIDENTIAL WELLS BASED ON POTENTIAL FOR GROUNDWATER IN CONTACT

BOUNDARIES

- PROPERTY BOUNDARY
- FORD PROPERTY BOUNDARY

NOTES:
 COMPLETED MONITORING WELL LOCATIONS ESTIMATED BASED ON FIELD OBSERVATION. LOCATIONS WILL BE UPDATED FOLLOWING FINAL FIELD SURVEY.
 THE DELINEATION AND OFF-SET LINES ARE DASHED BECAUSE DATA COLLECTION IS ONGOING. THE LOCATIONS OF THE LINES MAY CHANGE BASED ON FUTURE DATA.



FORD MOTOR COMPANY
 LIVONIA TRANSMISSION PLANT
 LIVONIA, MICHIGAN

PROPOSED MONITORING WELL LOCATIONS

ARCADIS Design & Consultancy for natural and built assets

FIGURE
3