



MICHIGAN DEPARTMENT OF
ENVIRONMENT, GREAT LAKES, AND ENERGY

George L. Krisztian, Assistant Director
Drinking Water and
Environmental Health Division
517-284-6719 | KrisztianG@Michigan.gov

“We are, all of us, water beings on a water planet. Water is life. Without it, all living things die. Our dependence on water is absolute; our psyches know this and signal us in myriad ways of water’s elemental importance and significance. That is why we love the water and remember experiences associated with it.

Of the Earth’s vast resources of water, only a small fraction is fresh and drinkable. A few people among the globe’s billions have been charged with the task of ensuring everyone else has a reliable supply of safe water.

Supplying potable water is an essential human activity, a great responsibility, and a vocation of distinction.”

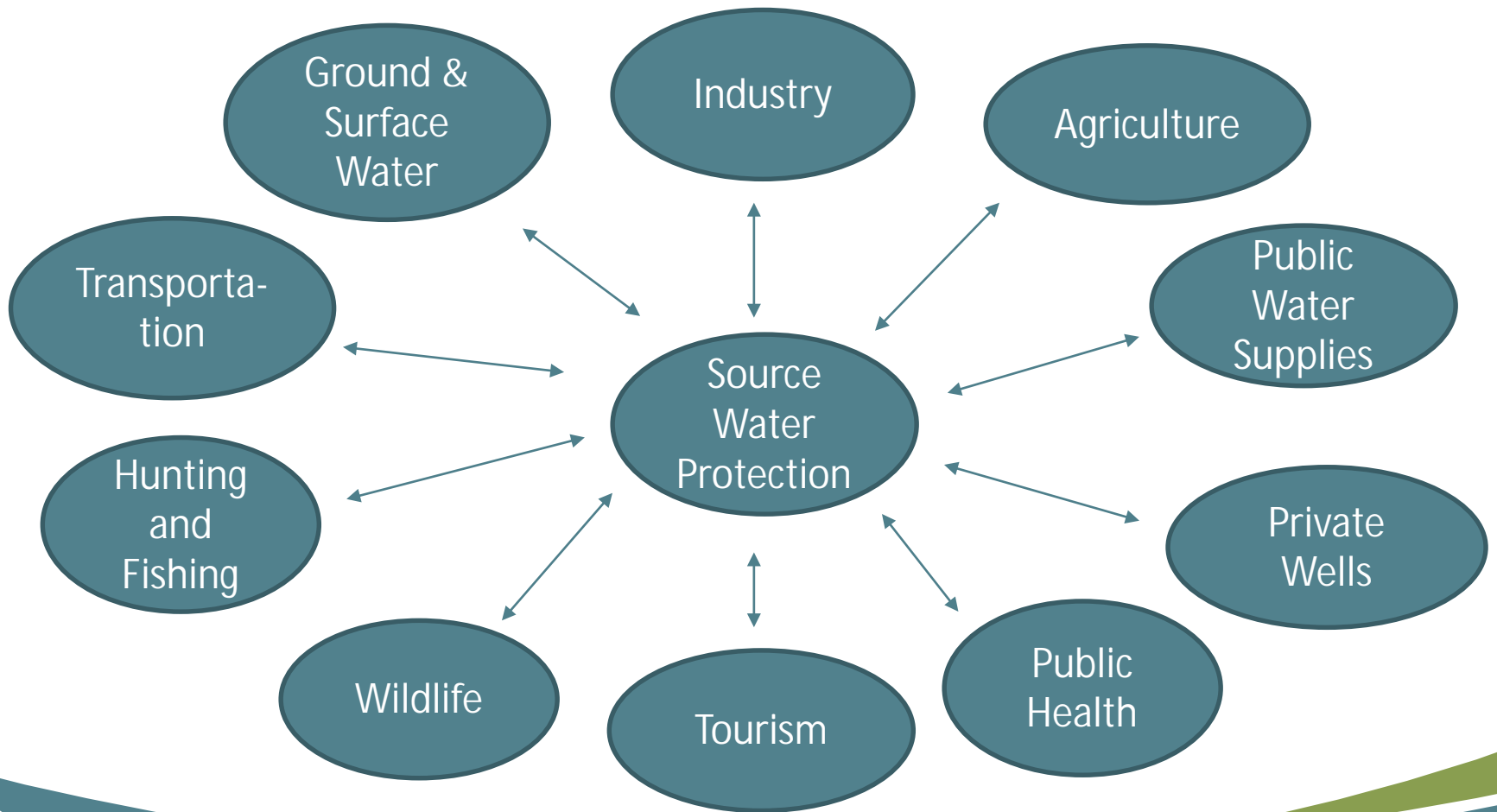
J. B. Mannion (1931 – 2009)

Former AWWA Executive Director

Buffalo Buffalo buffalo Buffalo Buffalo.



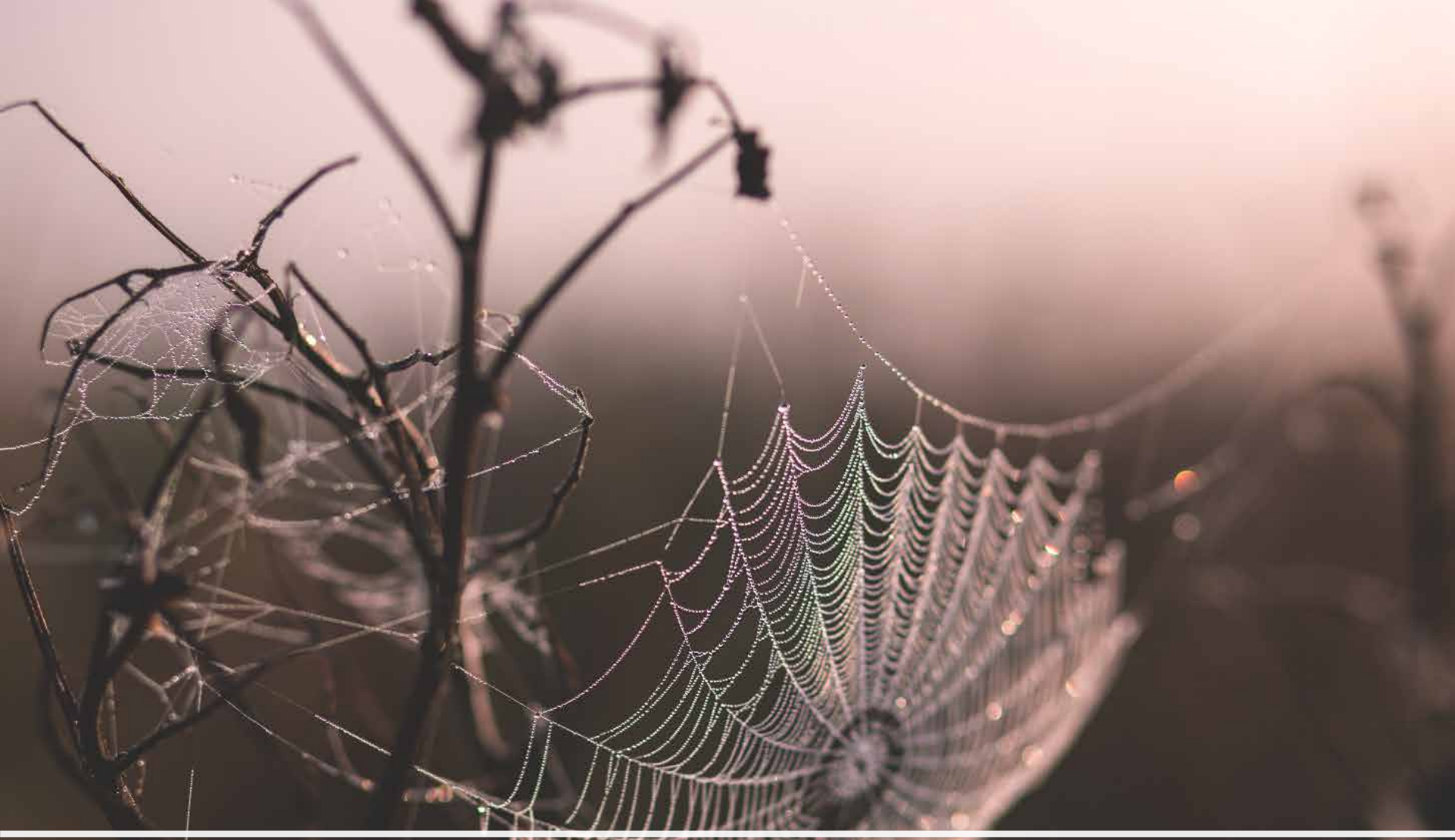
The Big Picture





Tearing Down
the Silos

How
Government
“Worked” in
the Past



How Government Needs to Work

The Flint Response

- FWICC
- City of Flint
- DEQ (Now EGLE)
- EPA
- HHS
- CDC
- MDARD
- MDE
- MSP
- GCHD
- Community Groups
- Schools
- Department of Corrections
- Researchers
- CORE
- Federal HHS
- United Way
- Churches
- Many Others



- MPART
- EGLE
- HHS
- City of Parchment
- City of Kalamazoo
- LCHD
- Many Others

The Parchment Response:
A Highly Coordinated Effort

An Abbreviated Timeline

7/26/18:

- 670 ppt PFOA and 740 ppt PFOS Found
- State Emergency Operations Activated Same Day
- LHD Issues “Do Not Drink” Same Day
- Press Conference Held at 10:00 p.m. Same Day

7/27/18:

- Bottled Water Distribution Begins

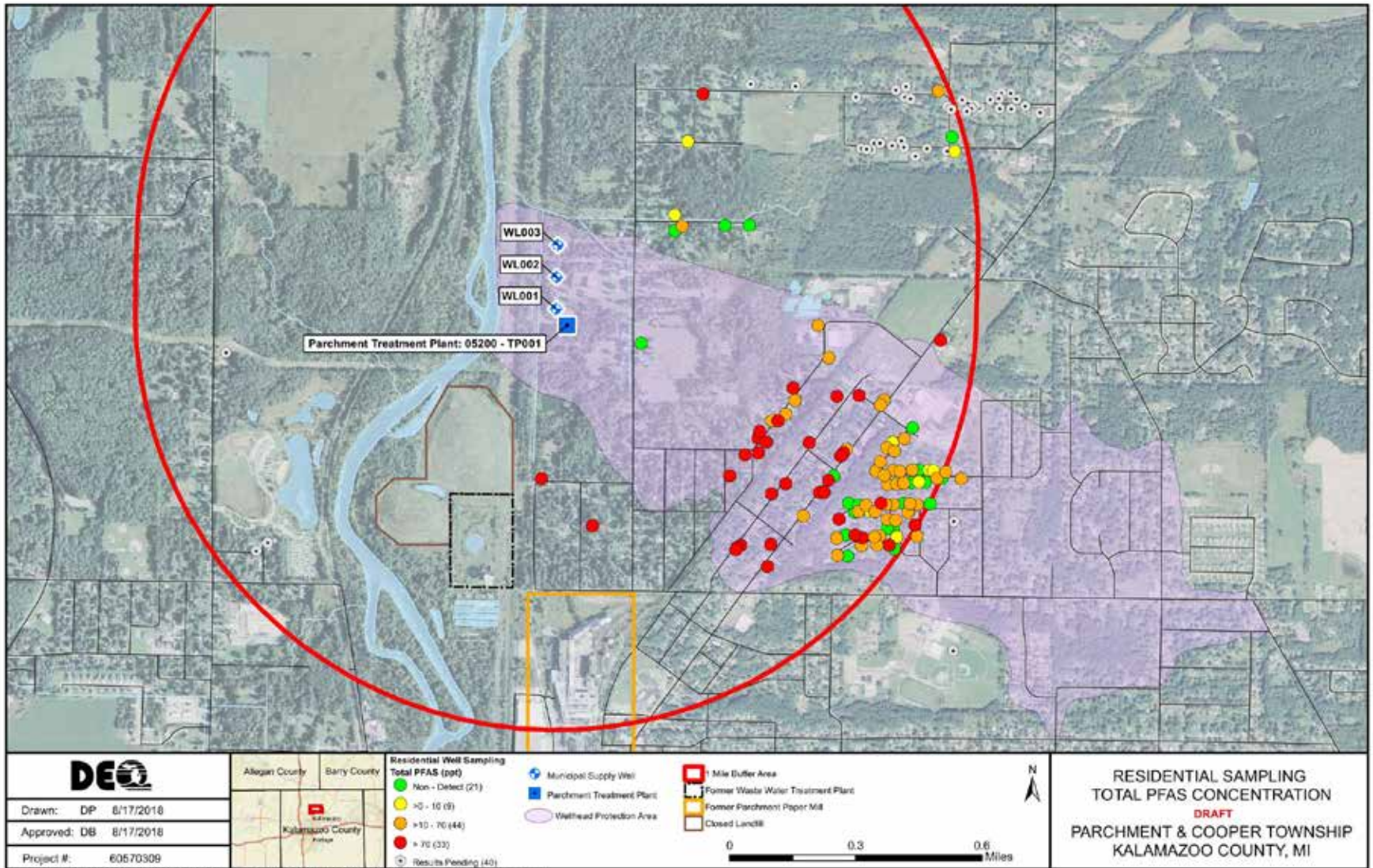
7/28/18:

- LHD Declares Local State of Emergency
- LHD Requests a Declaration by the State Same Day

7/29/18:

- State Declaration Signed

See Michigan.gov/PFASResponse for complete timeline



Current
Issues and
Priorities
for
DWEHD

LCR (First Round of Results)

PFAS Rules Implementation

Emerging Contaminants

Asset Management

Secondary Treatment

Staffing

IT Solutions

Michigan Department of
Environment, Great Lakes, and Energy

800-662-9278

Michigan.gov/EGLE



Follow us at: Michigan.gov/EGLEConnect