

GIVE YOUR RECYCLABLES NEW LIFE

Michigan residents recycle 15% of their household waste, while the national recycle average is 35%! Hundreds of millions of dollars worth of recyclables are thrown into landfills every year.



WHERE TO RECYCLE



Visit a local drop off location

Many recycling drop-off locations exist throughout Michigan! Visit the Michigan Recycling Directory and type the material you are looking to recycle into the search bar or search by material to find a location near you.



Attend a community collection event

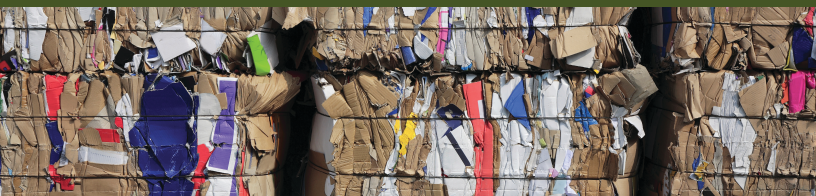
Communities often host collection events for tires, electronics, batteries, paint, cleaning products, and more. Some events are partially funded by EGLE. Find one near you at Michigan.gov/RecyclingDirectory.



Setup curbside recycling at home

Check with your local community to find out if curbside recycling is available in your area. Some options may also be listed in the Michigan Recycling Directory.

Recycling location information available at
Michigan.gov/RecyclingDirectory



EGLE offers grants to communities and other entities to increase the recycling of some materials such as electronics and tires, help ensure better recycling infrastructure, and create more recycling opportunities for residents.



MICHIGAN DEPARTMENT OF
ENVIRONMENT, GREAT LAKES, AND ENERGY

GET THE BEST RESULTS

- The Michigan Recycling Directory features additional recycling resources for hard-to-recycle items such as medicine, plastic bags and film, and electronics.
- Contact the recycling organization before you visit to verify their hours of operation, materials accepted, and any fees associated with collection.
- What is recyclable in one area may not be in another. Always check with your local recycler first.
- Rinse and empty all plastic, glass, and metal containers before recycling.
- Flatten all cardboard.
- Don't put recyclables in plastic bags.
- Learn more rules at *RecyclingRaccoons.org*.
- Recycling costs money because the material must be hauled and managed before it can be used in new products. A service fee is paid to have your garbage picked up, transferred, and buried at a landfill. Similar to the costs of waste hauling, it also costs money to pick up, transfer, and process recyclables.

Learn more about the Michigan Recycling Directory
Michigan.gov/RecyclingDirectory | 800-662-9278



MICHIGAN DEPARTMENT OF
ENVIRONMENT, GREAT LAKES, AND ENERGY

The Michigan Department of Environment, Great Lakes, and Energy does not discriminate on the basis of race, sex, religion, age, national origin, color, marital status, disability, political beliefs, height, weight, genetic information, or sexual orientation in the administration of any of its programs or activities, and prohibits intimidation and retaliation, as required by applicable laws and regulations.