

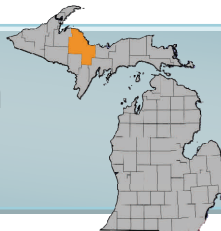
Michigan Areas of Concern

Project Highlight: Deer Lake



Partridge Creek Diversion | Apr. 2012 - Nov. 2013

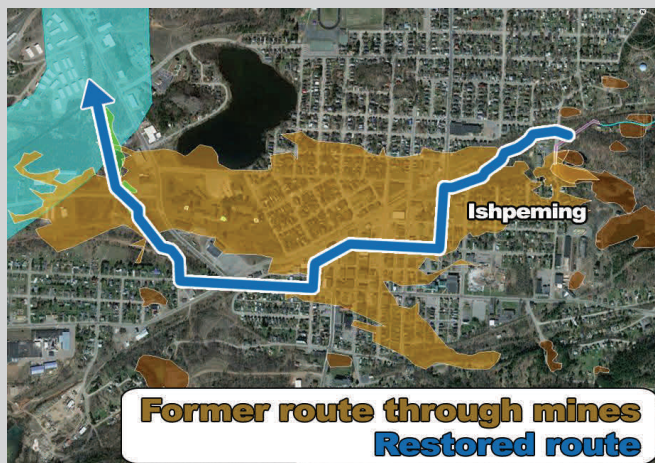
Project Type: Cleanup/Restoration
Location: Marquette County



GLRI Funds: \$8 Million
Local Match: \$700,000

Project at a Glance

The City of Ishpeming diverted Partridge Creek into historic mine workings in the early 1970s. As the



creek flowed through the mines it picked up traces of mercury. Partridge Creek's discharge to Carp Creek and eventually Deer Lake contributed approximately a quarter of the mercury to the Area of Concern.

Diversion of Partridge Creek back into the storm drain system eliminated the remaining point source of mercury to the AOC. The project occurred in two phases, with Phase I including structural stabilization of closed culverts, new water and storm water drains, new sidewalks and curbs, and improved open channel stream.

Phase 2 created a new stretch of storm water culvert and a naturalized stream channel. The stream offers new green space for the community and could provide fish habitat.

Phases 1 and 2 generated 60 jobs and input an additional \$4 million into the local and regional economy.

Local Perspective

"Citizens of the City of Ishpeming are extremely proud of the Partridge Creek project. Not only did this project provide necessary improvements to municipal water and storm water infrastructure, it also advances our efforts to address the Deer Lake Area of Concern."

This project will bolster fish populations and create a healthier environment in Deer Lake. The new creek route provides much-appreciated green space, beautifying our community. This creative solution was made possible through many great partnerships and would not have been possible without the Great Lakes Restoration Initiative."

- Mark Slown, Ishpeming City Manager

Partridge Creek



Before Phase I



After Phase I

Partners:



Contact:

Stephanie Swart
AOC Coordinator, Deer Lake
Office of the Great Lakes
swarts@michigan.gov
517-335-6721