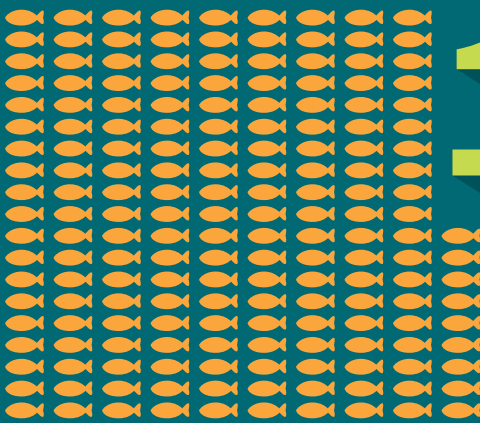
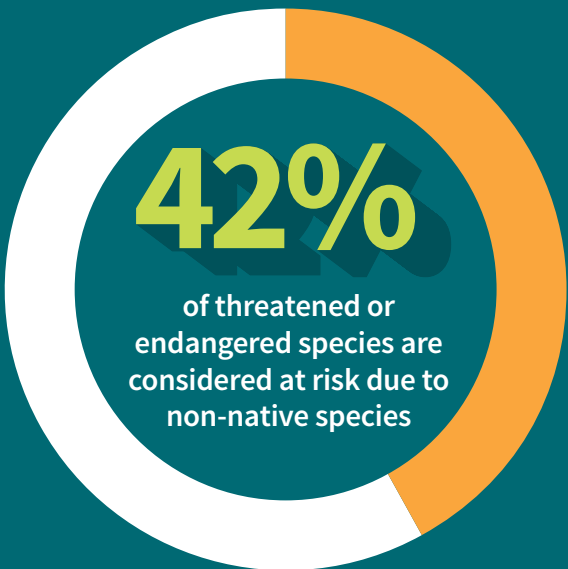
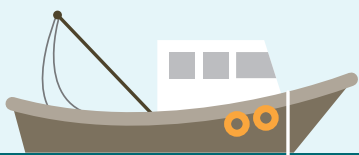


HELP STOP THE SPREAD OF

Aquatic Invasive Species

IN MICHIGAN



180+

non-native aquatic organisms have colonized the Great Lakes since the 1800s

\$24 million per year

SPENT TO CONTROL AQUATIC PLANTS IN MICHIGAN, INCLUDING EURASIAN WATERMILFOIL

\$200 million per year

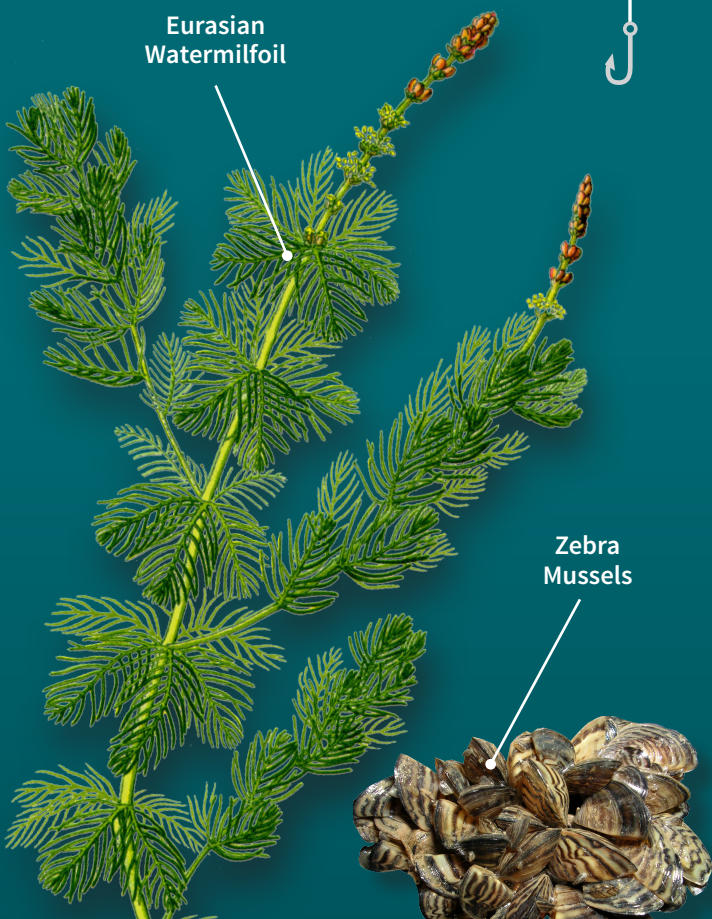
LOST BY THE GREAT LAKES REGION DUE TO THE EFFECTS OF SHIP-BORN INVASIVE SPECIES ON SPORT FISHING, COMMERCIAL FISHING, WILDLIFE WATCHING, AND RAW WATER USAGE

\$5.7 billion per year

AMOUNT OF TOTAL ECONOMIC IMPACT OF AQUATIC INVASIVE SPECIES IN THE GREAT LAKES REGION

Priceless

INSPECTING AND CLEANING YOUR BOAT AND EQUIPMENT TO PREVENT THE SPREAD OF AQUATIC INVASIVE SPECIES



REQUIRED ACTIONS – IT’S THE LAW IN MICHIGAN!



REMOVE

aquatic plants from boats, boating equipment, and boat trailers before launching or placing in the water.

(NREPA Part 413 Sec. 41325)



DRAIN

live wells, bilges and all water from boats before leaving the access site.

(MI DNR Fisheries Order 245)



DISPOSE

of unused bait in the trash. Do not release bait into the water.

(MI DNR Fisheries Order 245)



DON'T TRANSFER

fish to water bodies other than where they were caught.

(MI DNR Fisheries Order 245)

ADDITIONAL RECOMMENDED ACTIONS – PROTECT OUR NATURAL RESOURCES!

- Inspect and remove plants and mud from boats, trailers, and equipment before leaving the access area. Dispose of the material in a trash receptacle or otherwise away from the water body, if possible.
- Power wash boats and trailers before leaving the access site. Alternatively, use a nearby car wash or wash at home.
- Allow the boat to dry for at least 5 days before launching into a different body of water.
- Disinfect livewells and bilges with bleach solution (1/2 cup bleach to 5 gallons water).