

# Invasive Species Alert

## Girdled Snail

(*Hygromia cinctella*)

\*Detected in Michigan\*

### Identification:

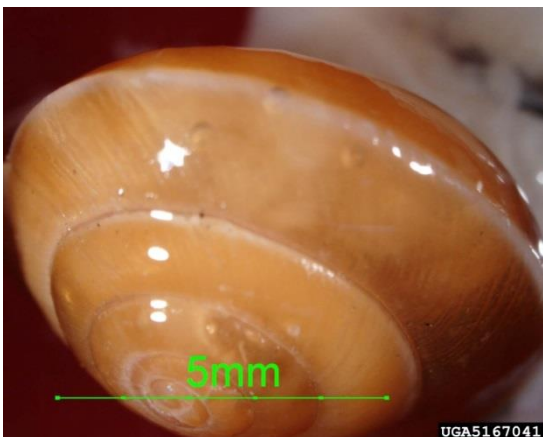
- Shell is triangular or pyramid shaped
- Shell size is about 6-7 mm high and 10-14 mm wide
- Shells tend to be brown to yellow with a white band on the widest part
- 5-6 whorls
- Aperture (opening) of the shell is oval



Charles Olsen, USDA APHIS PPQ, Bugwood.org

**Diet:** Girdled snails feed on a variety of plant materials.

**Habitat:** Girdled snails are often found to aggregate in large numbers in gardens and on hedges.



Charles Olsen, USDA APHIS PPQ, Bugwood.org

**Native Range:** Mediterranean

**Local Concern:** Due to this species' tendency to aggregate in large numbers and its herbivorous habits, girdled snails pose a threat to native plant communities.

**Potential Means of Introduction:** May hitchhike on potted plants, plant materials or in soil.

Report this species at [www.misin.msu.edu](http://www.misin.msu.edu) or download the MISIN smartphone app and report it from your phone